

LINK-BELT SPEEDER

LS-50

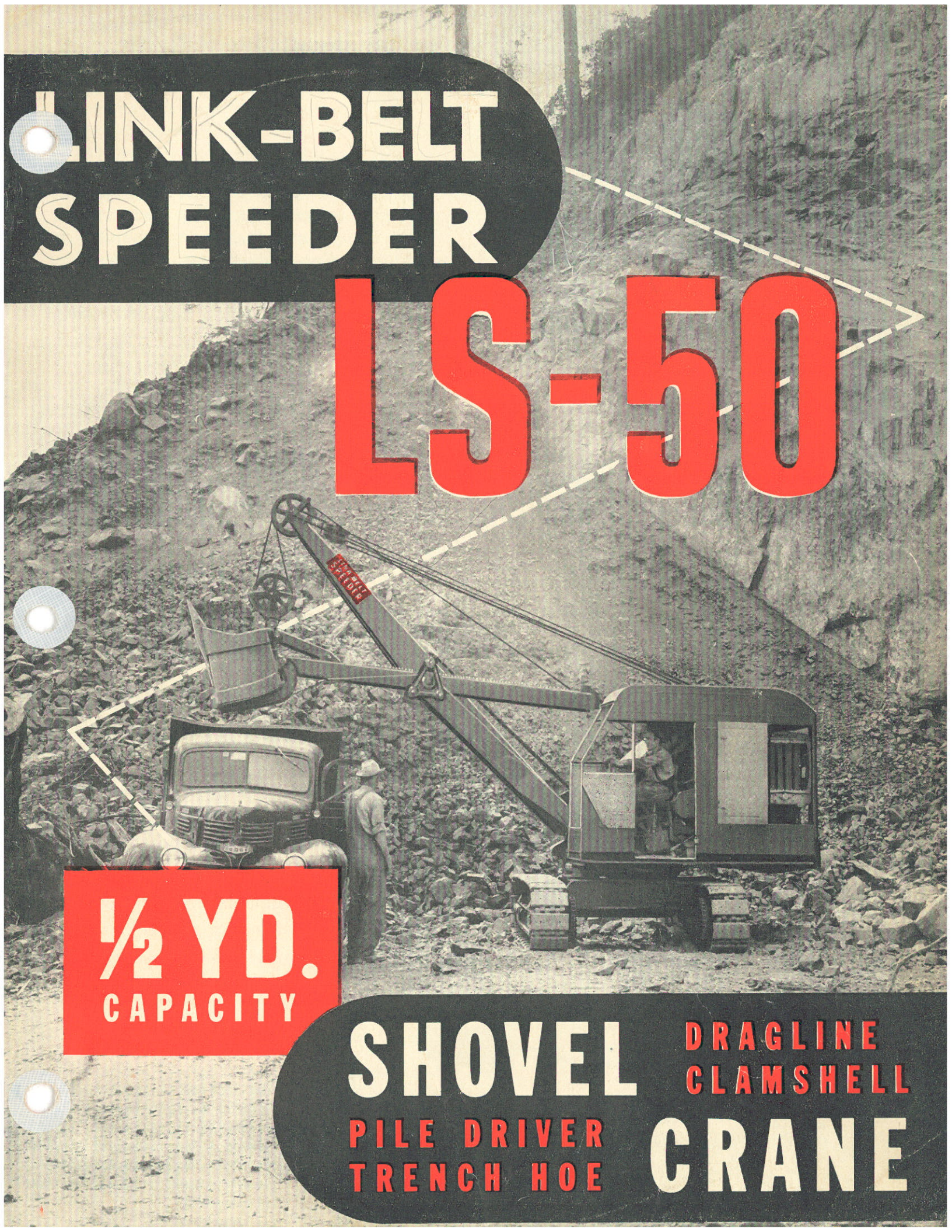
1/2 YD.
CAPACITY

SHOVEL

**PILE DRIVER
TRENCH HOE**

**DRAGLINE
CLAMSHELL**

CRANE





as a Dragline

Many diversified jobs are profitably performed with a Link-Belt Speeder equipped with a dragline bucket. Here is a pipe-line ditch being opened, an outstanding achievement for a dragline, on rough ground where traction diggers could not go.



Handling bulk material can often be satisfactorily done with a Link-Belt Speeder dragline. Ample power to swing a capacity load at the end of an extra-long boom is enabling this contractor to make good time on a batch plant operation.

The Owner of a **LINK-BELT** Finds an outstanding **RAPID — EASY —** for many

This feature takes the Link-Belt Speeder machine out of the class of special-purpose equipment, multiplies its usefulness many-fold, and effectuates a continuing return on the investment. These pages



The Link-Belt Speeder is chosen here for an excavating job in usually heavy, sticky soil. Where ground is especially soft, double crawler tracks can be furnished to reduce ground pressure to the minimum.

Road work calls for grading as well as handling rock for filling and paving material. Link-Belt Speeders are favorites with western lumber operators, because of their ability to meet every working condition and deliver satisfactory results. The machine shown is loading rock into a portable crushing plant, for roads in the Douglas fir and Sitka spruce regions of the Pacific Northwest.



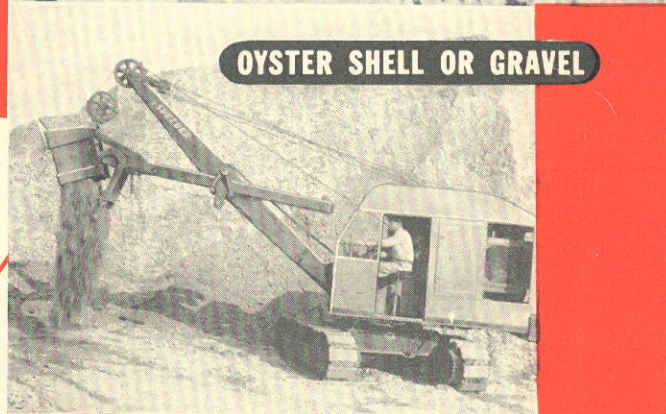
LOADING OUT ROCK

as a Shovel

Speeder "Shovel-Crane" advantage in its CONVERTIBILITY different Jobs!

will give an idea of the wide range of operations profitably performed by the standard LS-50 machine, equipped with interchangeable front-end attachments. This quick, easy convertibility is a feature of every size machine in the Link-Belt Speeder line.

Excavating, grading, loading are typical Link-Belt Speeder shovel jobs. Smooth operation, easy control and power for a full dipper and a quick swing add up to plenty of tons-per-day for the LS-50! Shovel boom and dipper sticks are all welded for strength, lightness and durability. Independent chain crowd is self-adjusting to all boom angles, gives maximum digging power under all conditions.



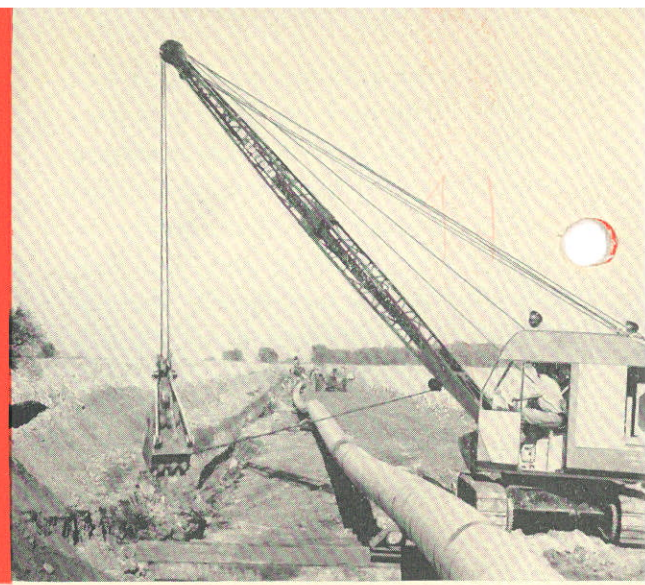
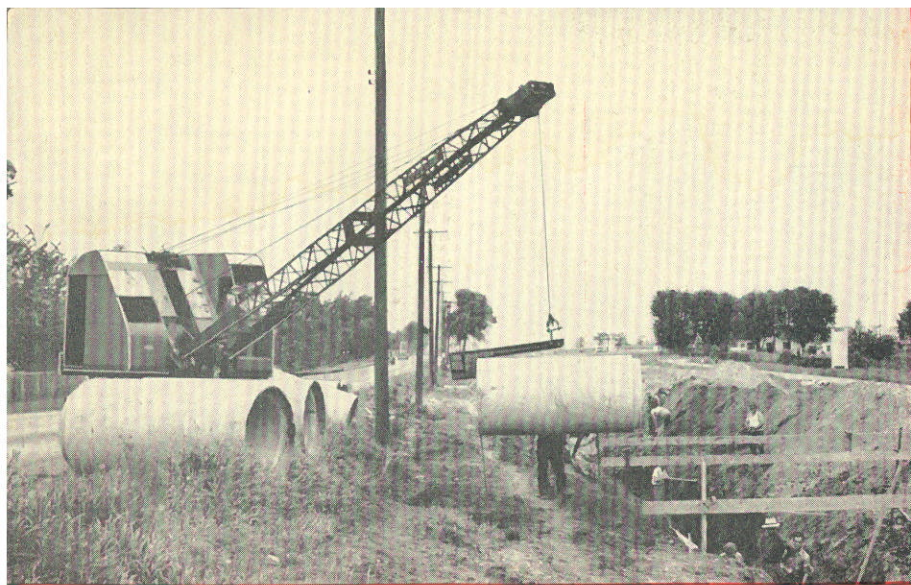
OYSTER SHELL OR GRAVEL



CLAY



GRAVEL



as a CRANE

Eleven thousand feet of concrete culvert, ranging in size from 12 to 36 inches, was swung into position on this storm sewer project, with the help of this LS-50 equipped as a crane.

THE LS-50 IS *Fast* *Easy to Handle*

Advanced design and modern construction give the LS-50 the power and strength to meet the demands of continuous, full capacity operation.

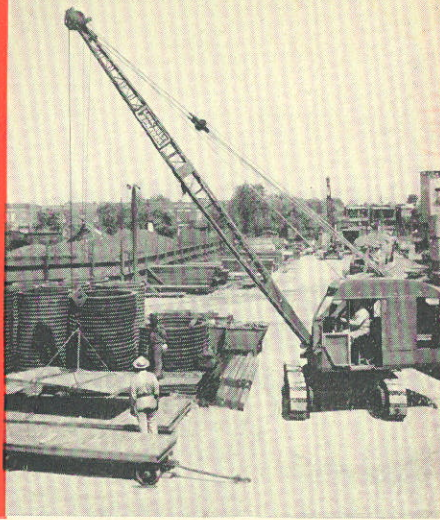
All welded steel construction eliminates castings. Two main drums are on separate shafts, with large external band clutches manually operated, giving the operator "feel" of the load. Clutches are instantly accessible for inspection, adjustment or re-lining.

Controls operated from within the cab permit steering in both directions, either grad-

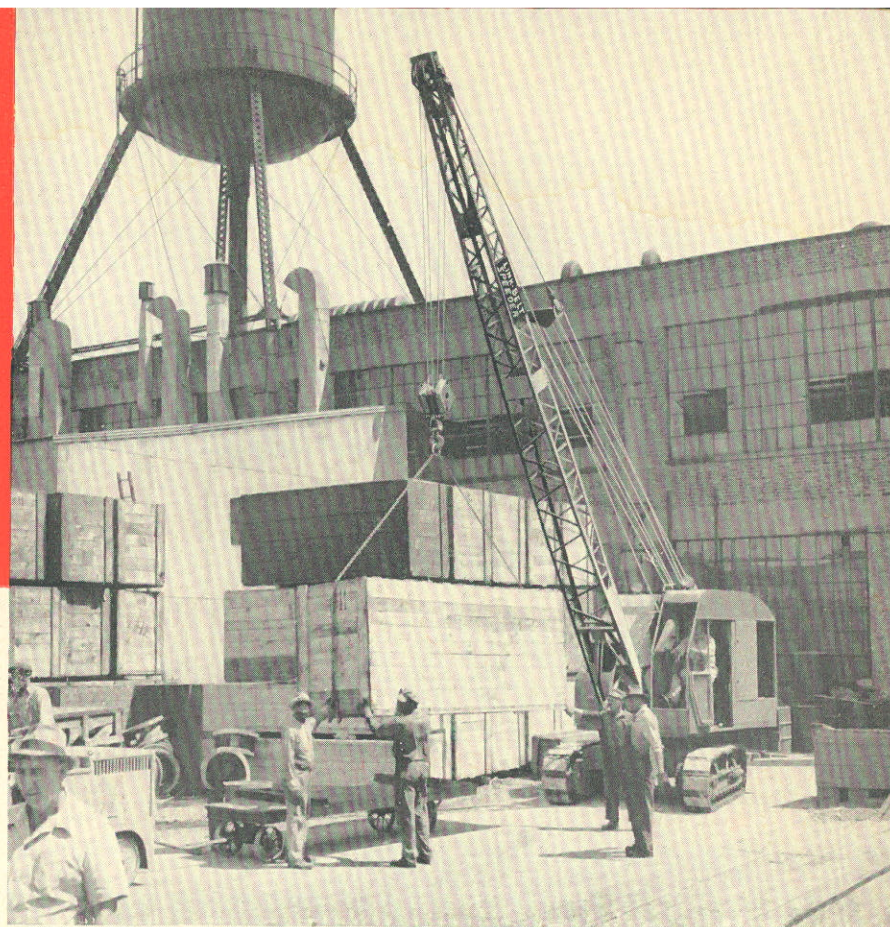


as a TRENCHER

Excavating for foundations, pipe trenches or many other purposes, is often done by the Link-Belt Speeder trench hoe, as seen in the two examples at



Industrial plants of every kind have lifting and handling work which can best be performed by a Link-Belt Speeder crane. Above, the machine is unloading, stacking and handling steel sheets, bars and rings. To the right, crated machinery is being loaded on freight cars by a Link-Belt Speeder LS-50 crane.



...le Economical to Operate!

ual or sharp, regardless of position of cab on lower frame. **POSITIVE TRACTION LOCK** operated from the cab, engages in three positions, and prevents crawlers moving while working. **NO BLOCKS OR CHECKS NEEDED.**

Oversize bearings, provision for easy lubrication, heavy, heat-treated roller chains, cut steel gears, forged steel rollers, are typical details which add strength and long life, and keep operating costs and maintenance at a minimum.

To lay a new water main near Portland, Ore., twenty thousand feet of ditch, 4 feet deep, were dug by this LS-50 trench hoe at the rate of 1000 feet per day.

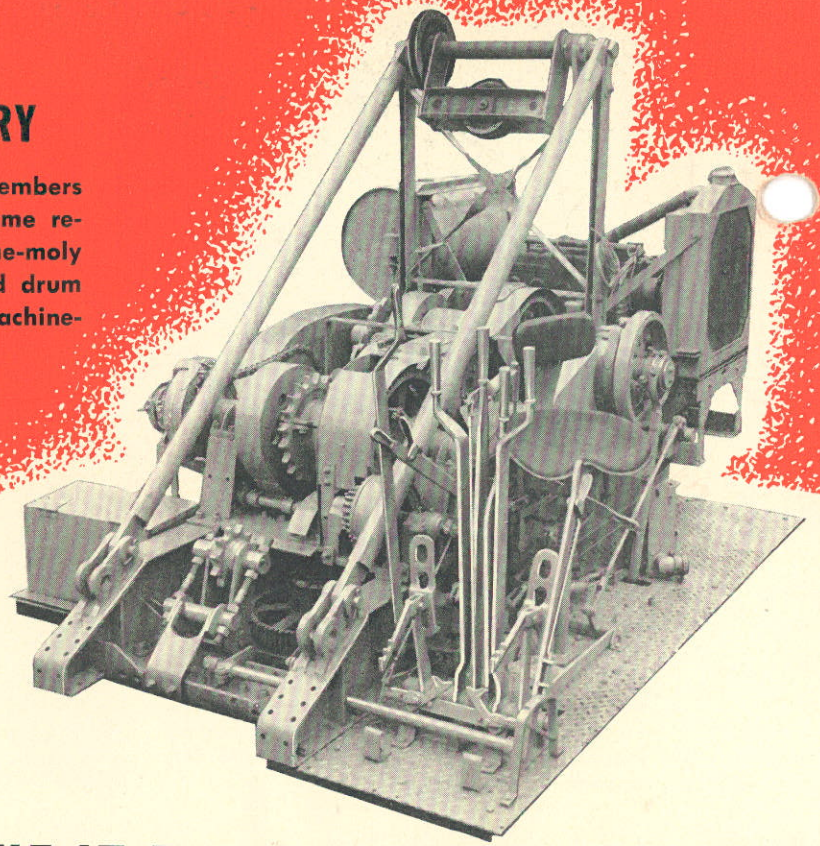
TRENCH HOE

me left and at the right. The Link-Belt Speeder trench-hoe is of a special design developed by our own engineers and built by us.



RUGGED UPPER MACHINERY

The sturdy, rigid frame, composed of rolled steel members with welded cross-ties and pin-connected "A" frame revolves on conical rollers. Main power shaft is chrome-moly steel, in self-aligning roller bearings. Reverse and drum shafts have heavy bronze bearings. Alloy steel, machine-cut gears give smooth action, long wear.

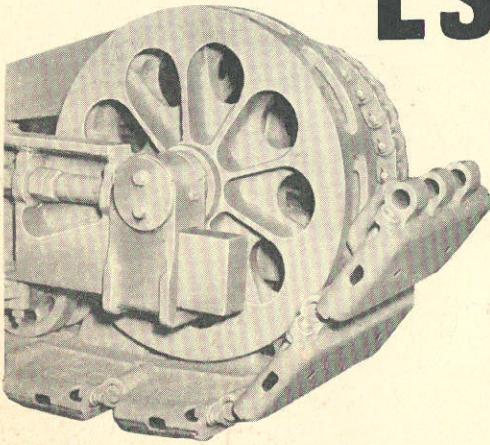


Features

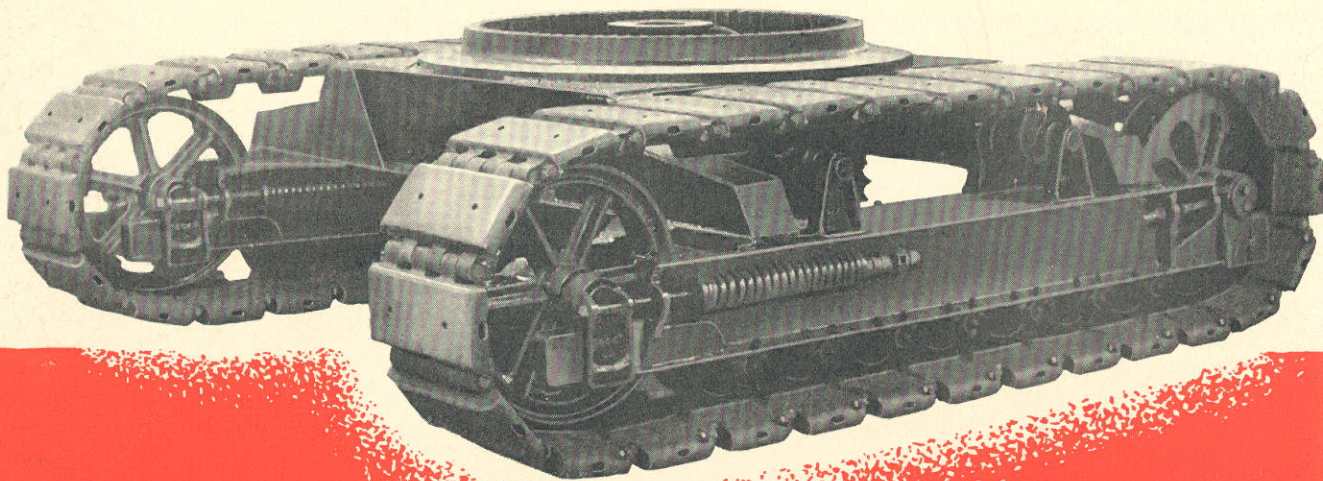
OF THE **LS-50**

THAT MAKE IT A

Profitable Machine

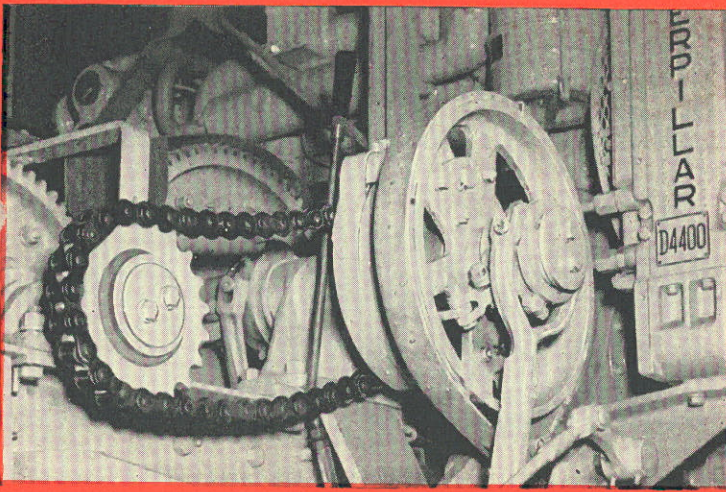


ION-CLOGGING,
PERFECT GUIDING
CRAWLER TRENDS



ELECTRIC WELDED
ROLLED STEEL MEMBER
LOWER FRAME CONSTRUCTION
FOR *Longer Life*

Turntable is alloy steel with machined roller path. Conical rollers are machined from drop-forged alloy steel. Single traction shaft, in four heavy bearings and fully enclosed bevel gears transmit power to crawlers through heavy heat-treated roller chains.

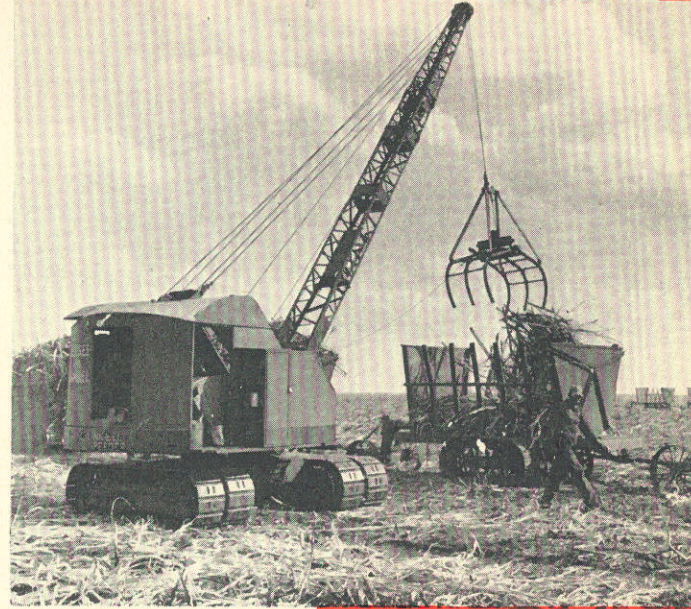


SAFETY TYPE INDEPENDENT RAPID BOOM HOIST

Boom hoist controlled by separate clutch and brake. Automatically engaged with power when lowering for precision operation and added safety. Ratchet and pawl, operated from cab, locks boom hoist when not in use.

FOR LOW GROUND PRESSURE CONDITIONS

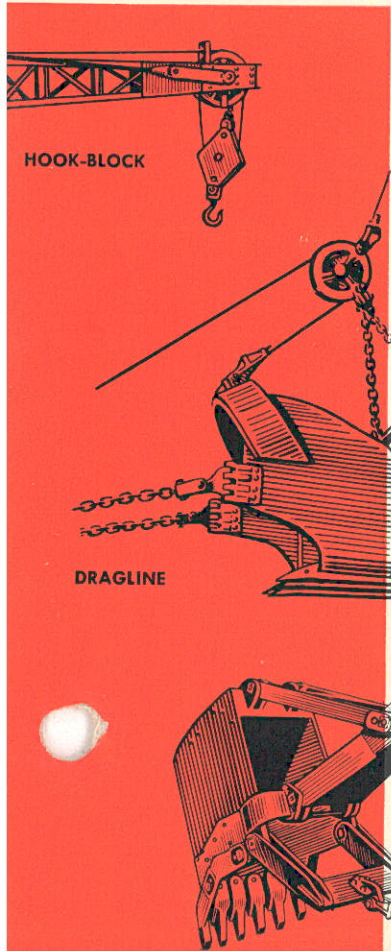
The LS-50 can be furnished with patented, dual-crawler tracks, having a ground pressure of $2\frac{3}{4}$ pounds per square inch of tread area. Permits operation in swampy regions or in soft soil conditions, with dragline bucket for drainage work.



to Own and Run

INTERCHANGEABLE ATTACHMENTS

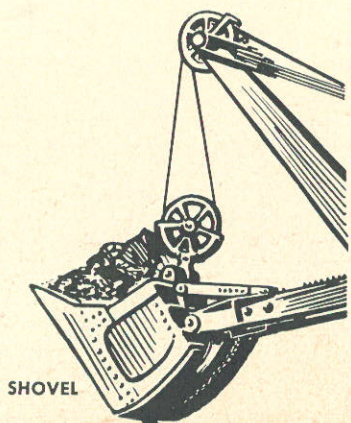
Full range of attachments now available for quick, easy conversion from one to another without changing the main unit. Thus the LS-50 can be kept in more constant use, shifting from one job to another without delay or needless expense.



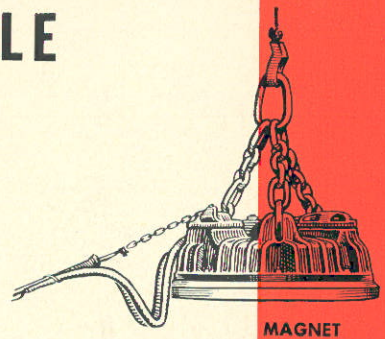
HOOK-BLOCK

DRAGLINE

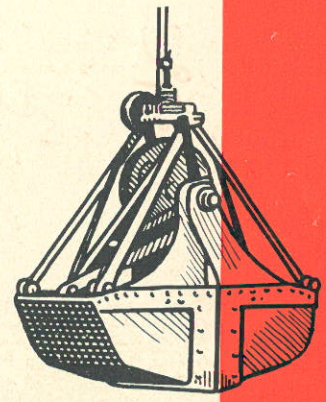
TRENCH HOE



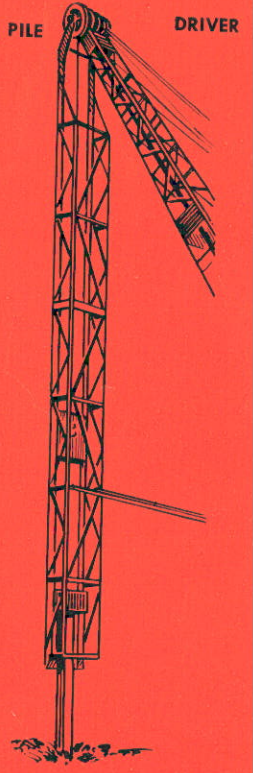
SHOVEL



MAGNET



CLAMSHELL

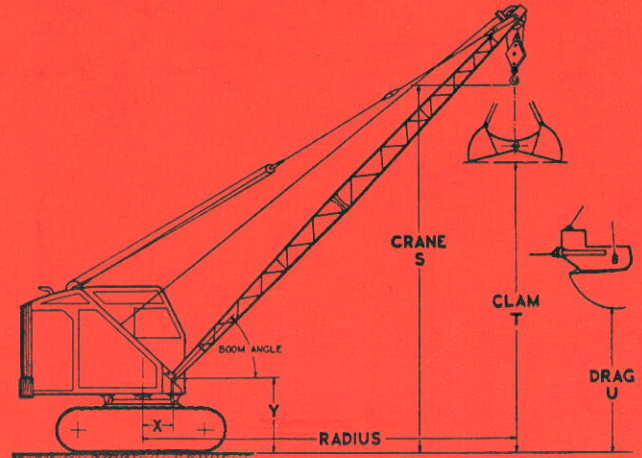
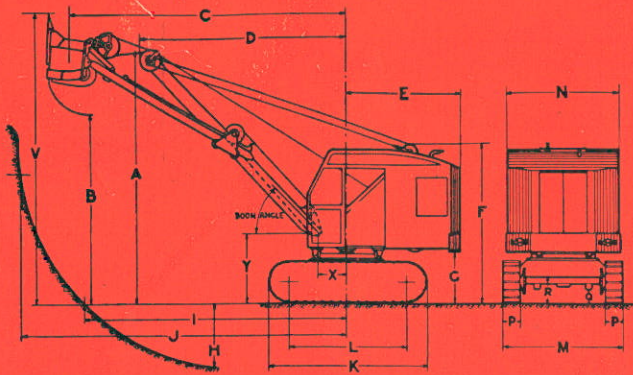


PILE

DRIVER

LINK-BELT SPEEDER LS-50 1/2 YARD

WORKING RANGES, CLEARANCES and CAPACITIES



SHOVEL Working Ranges

MODEL LS-50—16 Ft. Boom, 12 Ft. Stick

Boom Angle	60°	55°	50°	45°	40°
Clearance Height of Boom	A 19'-0"	18'-0"	17'-1"	16'-2"	14'-10"
Maximum Dumping Height	B 17'-0"	16'-0"	15'-0"	14'-0"	12'-6"
Maximum Dumping Radius	C 15'-8"	16'-3"	17'-0"	17'-9"	18'-7"
Clearance Swing of Boom	D 10'-8"	11'-8"	12'-9"	13'-9"	14'-10"
Digging Depth Below Treads	H 3'-0"	3'-3"	3'-6"	4'-0"	4'-6"
Radius Cut at Tread Level	I 13'-0"	13'-4"	13'-8"	14'-0"	14'-3"
Digging Radius 8' Elevation	J 18'-9"	19'-6"	20'-3"	21'-0"	21'-6"
Maximum Height of Cut	V 22'-6"	21'-6"	20'-6"	19'-2"	18'-0"

DIMENSIONS

Rear Radius	E	7'-8"
Overall Height	F	9'-10"
Ground Clearance of Cab	G	3'-0"
Overall Length of Crawlers	K	9'-9"
Center to Center of Crawler Sprockets	L	7'-3"
Width of Crawler Base with 16" treads	M	7'-10"
Width of Crawler Base with 20" treads	M	8'-2"
Width of Cab	N	7'-9 1/2"
Width of Tread Shoes Standard	P	16"
Width of Tread Shoes Optional at extra cost	P	20"
Minimum Ground Clearance	Q	12"
Truck Frame Clearance	R	18"
Radius of Boom Hinge	X	1'-10"
Height of Boom Hinge	Y	4'-2"

BRIEF SPECIFICATIONS

POWER UNIT

Gasoline, 6 cylinder heavy duty industrial engine, rated 53 H.P. at 1400 R. P. M.
 Electric starter is standard equipment.
 Fuel tank capacity—30 gal.
 Diesel, electric or oil engine power can be furnished.

LINE PULLS AND SPEEDS

9" dia. Drum—8,000 lbs. at 140 ft. per min.
 11" dia. Drum—6,400 lbs. at 175 ft. per min.

CRAWLERS

Travel Speed—Low0.9 miles per hour
 High2.4 miles per hour
 16" Crawlers, standard weight—Ground contact...2928 sq. in.
 20" Crawlers add 500 lbs.—Ground contact.....3660 sq. in.

LINK-BELT SPEEDER CORPORATION RESERVES THE RIGHT TO ALTER THESE SPECIFICATIONS WITHOUT NOTICE.

CRANE and DRAGLINE—30 Foot Boom

Angle of Boom	Radius of Load	LIFTING CAPACITY Ratings Based on 75% Tipping Load	CLEARANCES		
			Crane W less S	Clam W less T	Drag W less U
75°	10 Ft.	11,000 Lbs.	30'-10"		
70°	12 Ft.	8,250 Lbs.	30'-0"		
64°	15 Ft.	6,000 Lbs.	29'-0"	24'-0"	22'-8"
53°	20 Ft.	4,000 Lbs.	25'-10"	20'-10"	19'-6"
40°	25 Ft.	3,000 Lbs.	21'-0"	16'-0"	14'-8"
20°	30 Ft.	2,400 Lbs.	12'-0"		

BRIEF SPECIFICATIONS

SHOVEL

Boom—16 ft. Dipper Stick—12 ft. Chain Crowd.
 Bucket—LINK-BELT SPEEDER Standard 1/2 Yd.
 Hoist speed, single line.....175 ft. per min.
 Crowd speed100 ft. per min.
 Retract speed155 ft. per min.
 Swing Speed5 1/2 R.P.M.
 Working weight, gasoline, 16" treads.....25,500 lbs.

DRAGLINE

Boom 30 ft. Bucket—LINK-BELT SPEEDER Standard 1/2 Yd.
 Hoist speed, single line.....175 ft. per min.
 Inhaul—standard speed140 ft. per min.
 Swing Speed5 1/2 R.P.M.
 Working weight, gasoline, 16" treads, with bucket 25,000 lbs.
 Ground pressure, gasoline, 16" treads.....8 1/2 lbs. per sq. in.
 Ground pressure, gasoline, 20" treads.....7 lbs. per sq. in.

CRANE AND CLAMSHELL

Boom—30 ft.
 Hoisting speed, single line175 ft. per min.
 Holding line speed175 ft. per min.
 Swing Speed5 1/2 R.P.M.
 Working weight, gasoline, 16" treads, without bucket 23,300 lbs.

TRENCH HOE

Boom—14 ft. Dipper arm—7'0" Maximum reach—22'9"
 Depth of cut—12 ft. Width of cut—30"
 Inhaul speed, 2 part.....62 ft. per min.
 Inhaul—optional speeds70 or 87 ft. per min.
 Swing Speed5 1/2 R.P.M.
 Working weight, gasoline, 16" treads.....25,500 lbs.
 Overall height (F) with gantry raised—12'5".

LINK-BELT SPEEDER CORPORATION

A Specialized Subsidiary of Link-Belt Company

301 W. Pershing Road, Chicago 9, Illinois

Factories: Chicago, Cedar Rapids

Telephones — Chicago, Boulevard 9400 . . . Cedar Rapids 2-3183