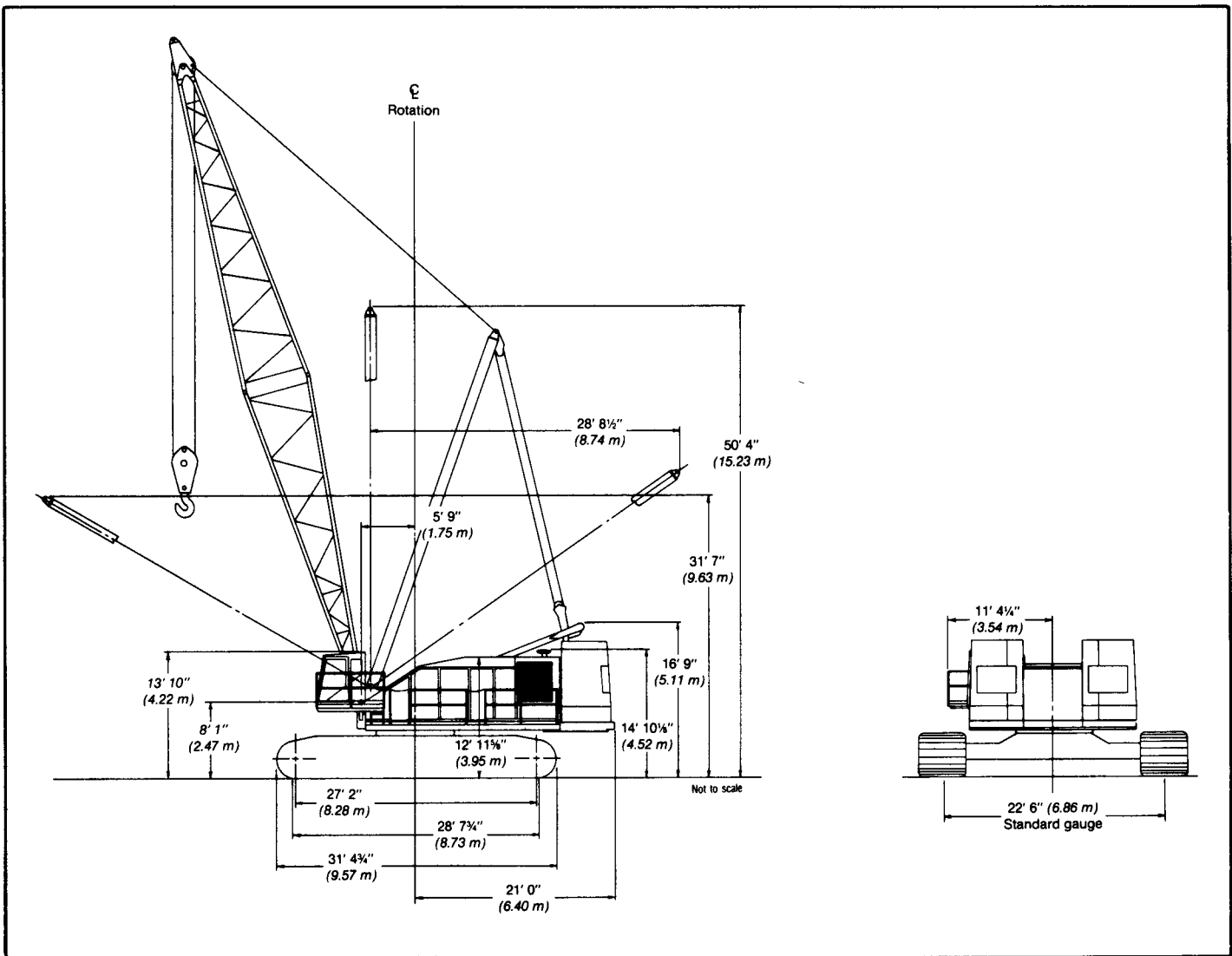


General Specifications

Link-Belt® 300-ton (272.10 metric ton)

Wire rope crawler crane

LS-818



General dimensions	Feet	meters
Basic heavy duty boom length	70' 0"	21.34
Overall width with —	—	—
50" (1.27 m) track shoes	26' 8"	8.12
60" (1.52 m) track shoes	27' 6"	8.38
Overall width of counterweight	19' 2"	5.84
Clearance under counterweight	4' 11"	1.50
Tailswing of counterweight	21' 0"	6.40

General dimensions	Feet	meters
Width of upper without operator's cab and catwalks	—	—
Width of upper with operator's cab and catwalks	12' 0"	3.66
Overall height —	—	—
Cab (over engine air cleaner)	14' 10-1/8"	4.52
Retractable gantry raised	16' 9"	5.11
Minimum ground clearance	11-5/8"	0.30

Boom				Boom point height ⊙		Capacities - 360° swing			
Length	Radius		Angle			Counterweight "A"		Counterweight "AB"	
	Feet	meters		Degrees	Feet	meters	Lbs.	kg	Lbs.
70' (21 m)	17	5.2	81.6	77' 2"	23.53	468.6*	212.6*	600.0	272.2
	18	5.5	80.7	77' 0"	23.48	434.6*	197.1*	567.2*	257.3*
	19	5.8	79.9	76' 10"	23.42	405.2*	183.8*	536.7*	243.4*
	20	6.1	79.1	76' 8"	23.36	379.2*	172.0*	509.1*	230.9*
	25	7.6	74.9	75' 5"	22.98	283.0	128.4	404.9*	183.5*
	30	9.1	70.6	73' 9"	22.48	202.5	91.9	325.0*	147.4*
	35	10.7	66.1	71' 8"	21.85	156.6	71.0	268.2	121.7
	40	12.2	61.5	69' 2"	21.08	127.1	57.7	218.8	99.2
	50	15.2	51.6	62' 4"	19.00	91.0	41.3	158.8	72.0
	60	18.3	40.0	52' 4"	15.95	69.9	31.7	123.6	56.1
70	21.3	24.2	35' 11"	10.94	55.8	25.3	100.3	45.5	
90' (27 m)	20	6.1	81.5	97' 0"	29.55	379.0*	171.9*	429.3*	194.7*
	25	7.6	78.3	96' 0"	29.27	284.1	128.9	404.1*	183.3*
	30	9.1	75.0	94' 9"	28.89	203.2	92.2	324.6*	147.2*
	35	10.7	71.7	93' 3"	28.41	157.2	71.3	268.7*	121.9
	40	12.2	68.3	91' 4"	27.84	127.6	57.9	219.2	99.4
	50	15.2	61.2	86' 6"	26.36	91.3	41.4	159.1	72.2
	60	18.3	53.6	79' 11"	24.36	70.3	31.9	123.9	56.2
	70	21.3	45.1	71' 1"	21.68	56.3	25.5	100.7	45.7
	80	24.4	35.1	59' 0"	17.97	46.3	21.0	84.4	38.3
	90	27.4	21.2	39' 9"	12.12	38.9	17.6	72.0	32.7
100' (30 m)	21	6.4	81.8	106' 11"	32.59	356.0*	161.5*	397.3*	180.2*
	25	7.6	79.5	106' 3"	32.38	284.4	129.0	387.4*	175.7*
	30	9.1	76.5	105' 1"	32.04	203.4	92.3	324.1*	147.9*
	35	10.7	73.6	103' 9"	31.62	157.3	71.4	268.7*	121.9
	40	12.2	70.5	102' 1"	31.11	127.6	57.9	219.2	99.4
	50	15.2	64.3	97' 9"	29.80	91.3	41.4	159.0	72.1
	60	18.3	57.7	92' 1"	28.07	70.2	31.8	123.8	56.2
	70	21.3	50.6	84' 9"	25.83	56.2	25.5	100.6	45.6
	80	24.4	42.6	75' 1"	22.89	46.3	21.0	84.3	38.2
	90	27.4	33.2	62' 0"	18.89	39.0	17.7	72.0	32.7
100	30.5	20.1	41' 6"	12.66	33.1	15.0	62.4	28.3	
110' (34 m)	23	7.0	81.5	116' 9"	35.58	317.0*	143.8*	372.1*	168.8*
	25	7.6	80.4	116' 5"	35.48	284.6	129.1	367.5*	166.7*
	30	9.1	77.8	115' 5"	35.17	203.4	92.3	323.6*	146.8*
	35	10.7	75.1	114' 2"	34.79	157.2	71.3	268.6	121.8
	40	12.2	72.4	112' 8"	34.33	127.5	57.8	219.1	99.4
	50	15.2	66.8	108' 10"	33.16	91.1	41.3	158.8	72.0
	60	18.3	61.0	103' 10"	31.64	70.1	31.2	123.6	56.1
	70	21.3	54.8	97' 5"	29.68	56.0	25.4	100.4	45.5
	80	24.4	48.1	89' 3"	27.21	46.1	20.9	84.2	38.2
	90	27.4	40.5	78' 10"	24.03	39.0	17.7	71.9	32.6
100	30.5	31.6	64' 10"	19.76	33.1	15.0	62.4	28.4	
110	33.5	19.1	43' 2"	13.17	28.4	12.3	54.7	24.8	
120' (37 m)	24	7.3	81.7	126' 8"	38.62	300.0*	136.1*	351.9*	159.6*
	25	7.6	81.2	126' 7"	38.57	284.7	129.1	351.9*	159.6*
	30	9.1	78.8	125' 7"	38.29	203.4	92.3	323.0*	146.5*
	35	10.7	76.4	124' 6"	37.94	157.1	71.3	268.5	121.8
	40	12.2	73.9	123' 1"	37.52	127.4	57.8	218.9	99.3
	50	15.2	68.8	119' 8"	36.47	90.9	41.2	158.6	71.9
	60	18.3	63.6	115' 2"	35.09	69.8	31.7	123.4	56.0
	70	21.3	58.1	109' 5"	33.36	55.8	25.3	100.1	45.4
	80	24.4	52.3	102' 4"	31.20	45.9	20.1	83.9	38.1
	90	27.4	45.9	93' 7"	28.51	38.7	17.6	71.7	32.5
	100	30.5	38.7	82' 5"	25.11	32.9	14.9	62.2	28.2
	110	33.5	30.2	67' 6"	20.58	28.3	12.8	54.6	24.8
120	36.6	18.3	44' 10"	13.66	24.5	11.1	48.3	21.9	

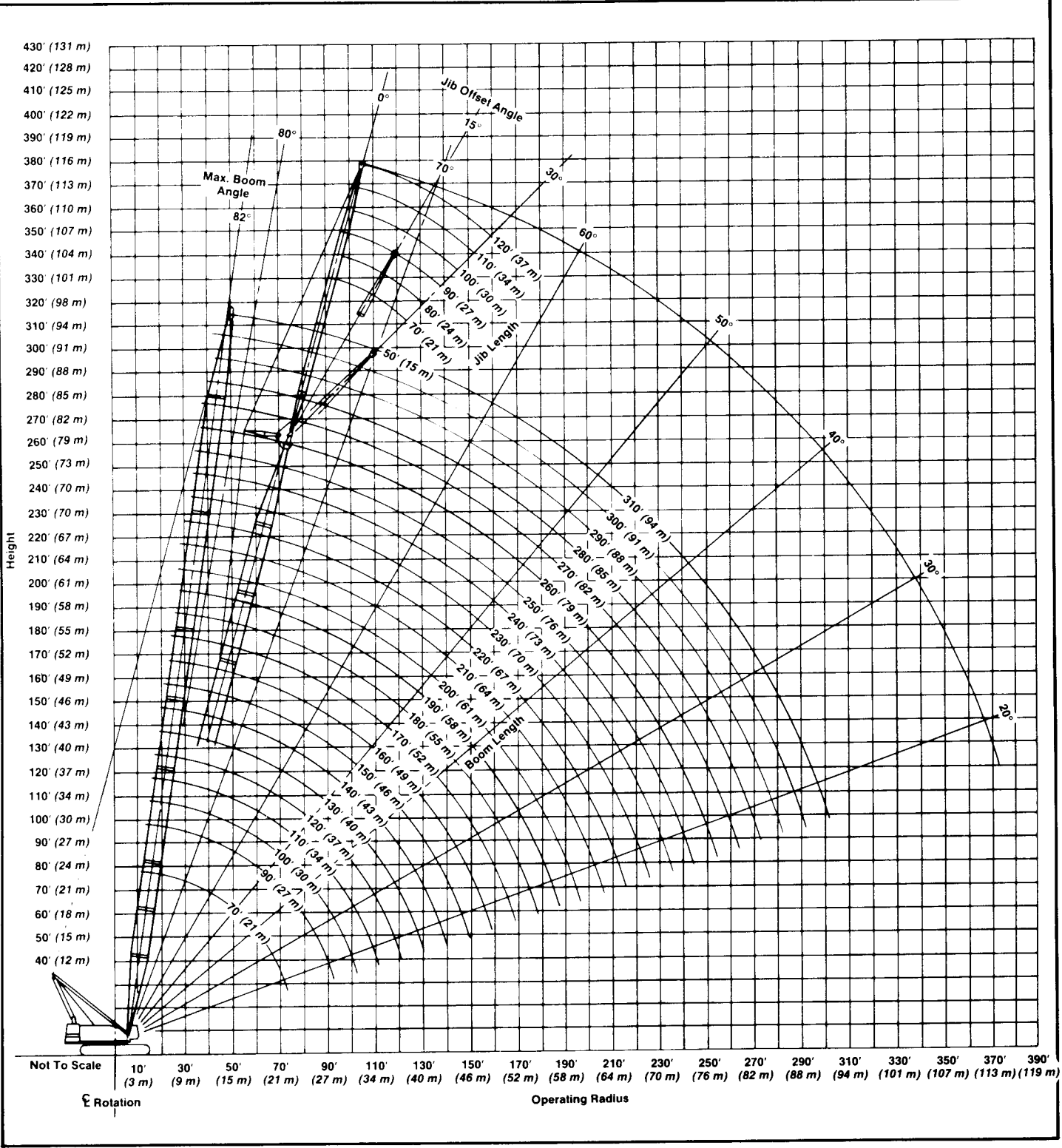
Boom				Boom point height ⊙		Capacities - 360° swing			
Length	Radius		Angle			Counterweight "A"		Counterweight "AB"	
	Feet	meters		Degrees	Feet	meters	Lbs.	kg	Lbs.
130' (40 m)	25	7.6	81.9	136' 8"	41.66	284.5*	129.0*	335.6*	152.2*
	30	9.1	79.7	135' 10"	41.40	203.3	92.2	322.4*	145.2*
	35	10.7	77.4	134' 9"	41.08	157.0	71.2	268.3	121.7
	40	12.2	75.2	133' 6"	40.69	127.2	57.7	218.7	99.2
	50	15.2	70.5	130' 4"	39.73	90.7	41.1	158.3	71.8
	60	18.3	65.8	126' 3"	38.48	69.6	31.6	123.1	55.8
	70	21.3	60.8	121' 1"	36.92	55.6	25.2	99.9	45.3
	80	24.4	55.6	114' 10"	34.99	45.6	20.7	83.6	37.9
	90	27.4	50.0	107' 1"	32.65	38.4	17.4	71.4	32.3
	100	30.5	44.0	97' 8"	29.76	32.7	14.8	61.9	28.1
	110	33.5	37.1	85' 9"	26.14	28.1	12.7	54.3	24.6
	120	36.6	28.9	70' 1"	21.37	24.3	11.0	48.1	21.8
	130	39.6	17.6	46' 4"	14.12	21.1	9.6	43.0	19.5
140' (43 m)	27	8.2	81.7	146' 6"	44.65	245.7	111.4	312.4*	141.7*
	30	9.1	80.4	146' 0"	44.50	203.2	92.2	304.6*	138.2*
	35	10.7	78.3	145' 0"	44.20	156.8	71.1	268.0*	121.6*
	40	12.2	76.2	143' 10"	43.84	127.0	57.6	218.4	99.1
	50	15.2	72.0	140' 11"	42.95	90.4	41.0	158.0	71.7
	60	18.3	67.6	137' 2"	41.81	69.3	31.4	122.8	55.7
	70	21.3	63.1	132' 6"	40.38	55.2	25.0	99.5	45.1
	80	24.4	58.4	126' 9"	38.65	45.3	20.5	83.3	37.8
	90	27.4	53.4	119' 11"	36.55	38.2	17.3	71.1	32.3
	100	30.5	48.1	111' 7"	34.02	32.4	14.7	61.6	27.9
	110	33.5	42.3	101' 7"	30.95	27.8	12.6	54.0	24.5
	120	36.6	35.7	89' 0"	27.13	24.0	10.9	47.8	21.7
	130	39.6	27.9	72' 7"	22.13	20.9	9.5	42.8	19.4
140	42.7	16.9	47' 10"	14.57	18.2	8.3	38.4	17.4	
150' (46 m)	28	8.5	81.9	156' 5"	47.68	229.5	104.1	296.6*	134.5*
	30	9.1	81.1	156' 2"	47.59	203.1	92.1	289.1*	131.1*
	35	10.7	79.1	155' 3"	47.31	156.6	71.0	267.3*	121.2*
	40	12.2	77.2	154' 2"	46.98	126.8	57.5	218.1	98.9
	50	15.2	73.2	151' 5"	46.15	90.4	41.0	157.7	71.5
	60	18.3	69.2	147' 11"	45.09	69.0	31.3	122.5	55.6
	70	21.3	65.0	143' 8"	43.78	54.9	24.9	99.2	45.0
	80	24.4	60.7	138' 5"	42.19	45.3	20.5	83.0	37.6
	90	27.4	56.2	132' 2"	40.30	37.8	17.1	70.7	32.1
	100	30.5	51.5	124' 9"	38.04	32.1	14.6	61.2	27.8
	110	33.5	46.4	115' 11"	35.34	27.5	12.8	53.6	24.3
	120	36.6	40.8	105' 4"	32.09	23.7	10.8	47.5	21.5
	130	39.6	34.5	92' 2"	28.08	20.6	9.3	42.5	19.3
140	42.7	26.9	75' 0"	22.86	17.9	8.1	38.1	17.3	
150	45.7	16.3	49' 3"	15.01	15.6	7.1	34.3	15.6	
160' (49 m)	30	9.1	81.6	166' 3"	50.67	202.9	92.0	277.7*	126.0*
	35	10.7	79.8	165' 5"	50.42	156.4	70.9	266.6*	120.1*
	40	12.2	78.0	164' 5"	50.11	126.5	57.4	217.8	98.8
	50	15.2	74.3	161' 10"	49.33	90.2	40.9	157.4	71.4
	60	18.3	70.5	158' 7"	48.35	68.7	31.2	122.1	55.4
	70	21.3	66.7	154' 8"	47.13	54.6	24.8	98.8	44.8
	80	24.4	62.7	149' 10"	45.67	44.9	20.4	82.6	37.5
	90	27.4	58.6	144' 1"	43.93	37.5	17.0	70.3	31.9
	100	30.5	54.3	137' 5"	41.88	31.7	14.4	60.8	27.6
	110	33.5	49.7	129' 6"	39.46	27.1	12.3	53.3	24.2
	120	36.6	44.8	120' 1"	36.61	23.4	10.6	47.1	21.4
	130	39.6	39.4	108' 11"	32.19	20.2	9.2	42.2	19.1
	140	42.7	33.3	95' 2"	29.00	17.6	8.0	37.8	17.1
150	45.7	26.0	77' 4"	23.57	15.3	6.9	34.1	15.5	
160	48.8	15.8	50' 7"	15.43	13.3	6.0	30.8	14.0	

Boom				Capacities - 360° swing					
Length	Radius		Angle	Boom point height ①		Counterweight "A"		Counterweight "AB"	
	Feet	meters	Degrees	Feet	meters	Lbs.	kg	Lbs.	kg
	Feet		meters		Lbs.		kg		
200' (61 m)	35	10.7	81.9	205' 11"	62.77	155.3	70.4	216.2*	98.1*
	40	12.2	80.4	205' 2"	62.58	125.4	56.9	208.1*	94.4*
	50	15.2	77.5	203' 2"	61.92	88.8	40.3	155.9	70.7
	60	18.3	74.5	200' 7"	61.14	67.2	30.5	120.6	54.7
	70	21.3	71.5	197' 6"	60.20	53.0	24.0	97.2	44.1
	80	24.4	68.5	193' 10"	59.07	43.4	19.7	81.0	36.7
	90	27.4	65.4	189' 6"	57.76	35.9	16.3	68.7	31.2
	100	30.5	62.2	184' 6"	56.24	30.2	13.7	59.2	26.7
	110	33.5	58.9	178' 9"	54.49	25.5	11.6	51.6	23.4
	120	36.6	55.4	172' 3"	52.50	21.8	9.9	45.4	20.6
	130	39.6	51.9	164' 10"	50.24	18.7	8.5	40.6	18.4
	140	42.7	48.1	156' 4"	47.65	16.0	7.3	36.2	16.4
	150	45.7	44.1	146' 8"	44.69	13.8	6.3	32.5	14.7
	160	48.8	39.8	135' 5"	41.27	11.8	5.6	29.3	13.3
	170	51.8	35.1	122' 3"	37.25	10.1	4.6	26.5	12.0
	180	54.9	29.7	106' 3"	32.39	8.6	3.9	24.0	10.9
	190	57.9	23.2	85' 11"	26.18	7.2	3.3	21.7	9.8
	200	61.0	14.1	55' 9"	16.98	6.0	2.7	19.7	8.9
210' (64 m)	36	11.0	82.0	215' 11"	65.81	148.0	67.1	203.2*	92.2*
	40	12.2	80.9	215' 3"	65.62	125.0	56.7	198.2*	89.9*
	50	15.2	78.1	213' 5"	65.04	88.5	40.1	155.5	70.5
	60	18.3	75.3	211' 0"	64.30	66.8	30.3	120.2	54.5
	70	21.3	72.5	208' 0"	63.41	52.6	23.9	96.7	43.9
	80	24.4	69.6	204' 6"	62.34	43.0	19.5	80.6	36.6
	90	27.4	66.6	200' 6"	61.10	35.5	16.1	68.3	31.0
	100	30.5	63.6	195' 9"	59.67	29.7	13.5	58.7	26.6
	110	33.5	60.5	190' 5"	58.03	25.1	11.4	51.1	23.2
	120	36.6	57.3	184' 4"	56.18	21.4	9.7	44.9	20.4
	130	39.6	54.0	177' 5"	54.07	18.2	8.3	40.2	18.2
	140	42.7	50.5	169' 7"	51.69	15.6	7.1	35.8	16.2
	150	45.7	46.9	160' 9"	48.99	13.3	6.0	32.1	14.6
	160	48.8	43.0	150' 7"	45.90	11.4	5.2	28.9	13.1
	170	51.8	38.8	138' 11"	42.35	9.6	4.4	26.0	11.8
	180	54.9	34.2	125' 4"	38.19	8.1	3.7	23.5	10.7
	190	57.9	28.9	108' 10"	33.18	6.8	3.1	21.3	9.7
	200	61.0	22.6	87' 11"	26.79	5.6	2.5	19.3	8.8
210	64.0	13.7	56' 11"	17.34	4.5	2.0	17.5	7.9	
220' (67 m)	38	11.6	81.8	225' 9"	68.80	135.0	61.2	188.6*	85.5*
	40	12.2	81.3	225' 5"	68.71	124.7	56.6	186.2*	84.6*
	50	15.2	78.7	223' 7"	68.15	88.1	40.0	155.1	70.4
	60	18.3	76.0	221' 4"	67.45	66.4	30.1	119.8	54.3
	70	21.3	73.3	218' 6"	66.60	52.2	23.7	96.3	43.7
	80	24.4	70.5	215' 2"	65.59	42.6	19.3	80.2	36.4
	90	27.4	67.7	211' 4"	64.41	35.1	15.9	67.8	30.8
	100	30.5	64.9	206' 11"	63.06	29.3	13.3	58.3	26.4
	110	33.5	62.0	201' 10"	61.52	24.7	11.2	50.7	23.0
	120	36.6	59.0	196' 1"	59.77	20.9	9.5	44.9	20.4
	130	39.6	55.9	189' 8"	57.81	17.8	8.1	39.7	18.0
	140	42.7	52.7	182' 5"	55.59	15.2	6.9	35.4	16.1
	150	45.7	49.3	174' 2"	53.10	12.9	5.9	31.6	14.3
	160	48.8	45.7	165' 0"	50.28	10.9	4.9	28.4	12.9
	170	51.8	42.0	154' 6"	47.08	9.2	4.2	25.6	11.6
	180	54.9	37.9	142' 5"	43.40	7.7	3.5	23.1	10.5
	190	57.9	33.4	128' 4"	39.11	6.4	2.9	20.9	9.5
	200	61.0	28.3	111' 5"	33.95	5.1	2.3	18.9	8.6
210	64.0	22.1	89' 10"	27.38	4.1	1.9	17.1	7.8	
220	67.1	13.4	58' 1"	17.70	3.0	1.4	15.5	7.0	

Boom				Capacities - 360° swing						
Length	Radius		Angle	Boom point height ①		Counterweight "A"		Counterweight "AB"		
	Feet	meters	Degrees	Feet	meters	Lbs.	kg	Lbs.	kg	
	Feet		meters		Lbs.		kg			
170' (52 m)	31	9.5	81.8	176' 3"	53.71	191.4	86.8	260.5*	118.2*	
	35	10.7	80.4	175' 7"	53.51	156.2	70.9	254.0*	115.2*	
	40	12.2	78.7	174' 7"	53.22	126.2	57.2	217.5	98.7	
	50	15.2	75.2	172' 3"	52.50	89.8	40.7	157.0	71.2	
	60	18.3	71.7	169' 3"	51.58	68.3	31.0	121.8	55.2	
	70	21.3	68.1	165' 6"	50.44	54.2	24.5	98.4	44.6	
	80	24.4	64.4	161' 0"	49.08	44.6	20.2	82.2	37.3	
	90	27.4	60.6	155' 9"	47.47	37.1	16.8	69.9	31.7	
	100	30.5	56.7	149' 7"	45.59	31.4	14.2	60.4	27.4	
	110	33.5	52.5	142' 5"	43.40	26.8	12.2	52.9	24.0	
	120	36.6	48.1	134' 0"	40.84	23.0	10.4	46.7	21.2	
	130	39.6	43.4	124' 2"	37.83	19.9	9.0	41.8	19.0	
	140	42.7	38.2	112' 5"	34.26	17.2	7.8	37.5	17.0	
	150	45.7	32.3	98' 1"	29.89	15.0	6.8	33.7	15.3	
	160	48.8	25.2	79' 7"	24.25	13.0	4.9	30.5	13.8	
	170	51.8	15.3	51' 11"	15.83	11.2	5.1	27.6	12.5	
	180' (55 m)	32	9.8	81.9	186' 2"	56.75	180.9	82.1	247.1*	112.0*
		35	10.7	81.0	185' 8"	56.60	155.9	70.7	240.9*	109.3*
40		12.2	79.3	184' 10"	56.33	126.0	57.2	217.2	98.5	
50		15.2	76.1	182' 7"	55.65	89.5	40.1	156.6	71.0	
60		18.3	72.8	179' 9"	54.78	68.0	30.1	121.4	55.1	
70		21.3	69.4	176' 3"	53.72	53.8	24.4	98.0	44.5	
80		24.4	66.0	172' 1"	52.45	44.2	20.0	81.8	37.1	
90		27.4	62.4	167' 2"	50.95	36.7	16.6	69.5	31.5	
100		30.5	58.7	161' 5"	49.21	31.0	14.1	60.0	27.2	
110		33.5	54.9	154' 10"	47.19	26.4	12.0	52.4	23.8	
120		36.6	50.9	147' 2"	44.86	22.6	10.3	46.3	21.0	
130		39.6	46.7	138' 4"	42.17	19.5	8.8	41.4	18.8	
140		42.7	42.1	128' 0"	39.02	16.8	7.6	37.1	16.8	
150		45.7	37.1	115' 9"	35.29	14.6	6.6	33.3	15.1	
160		48.8	31.3	100' 10"	30.75	12.6	5.7	30.1	13.7	
170		51.8	24.5	81' 9"	24.91	10.9	4.9	27.3	12.4	
180		54.9	14.8	53' 3"	16.23	9.3	4.2	24.7	11.2	
190' (58 m)		34	10.4	81.8	196' 0"	59.74	163.3	74.1	229.9*	104.3*
	35	10.7	81.4	195' 10"	59.69	155.6	70.1	229.9*	104.3*	
	40	12.2	79.9	195' 0"	59.43	125.7	57.0	216.8	98.3	
	50	15.2	76.8	192' 11"	58.79	89.2	40.1	156.3	70.9	
	60	18.3	73.7	190' 2"	57.97	67.6	30.7	121.0	54.9	
	70	21.3	70.5	186' 11"	56.97	53.4	24.2	97.6	44.3	
	80	24.4	67.3	183' 0"	55.78	43.8	19.9	81.4	36.9	
	90	27.4	64.0	178' 5"	54.38	36.3	16.5	69.1	31.3	
	100	30.5	60.6	173' 1"	52.75	30.6	13.9	59.6	27.0	
	110	33.5	57.0	166' 11"	50.89	26.0	11.8	52.0	23.6	
	120	36.6	53.3	159' 11"	48.74	22.2	10.1	45.8	20.8	
	130	39.6	49.5	151' 10"	46.28	19.1	8.7	41.0	18.6	
	140	42.7	45.3	142' 7"	43.45	16.4	7.4	36.7	16.6	
	150	45.7	40.9	131' 9"	40.16	14.2	6.4	32.9	14.9	
	160	48.8	36.0	119' 0"	36.28	12.2	5.5	29.7	13.5	
	170	51.8	30.5	103' 7"	31.58	10.5	4.8	26.9	12.2	
	180	54.9	23.8	83' 10"	25.56	9.0	4.1	24.4	11.1	
	190	57.9	14.4	54' 6"	16.61	7.6	3.4	22.1	10.0	

① Measured vertically from center of boom head sheave to ground.
Capacities shown in thousands of pounds and thousands of kilograms.

LS-818 boom/jib working ranges — heavy duty boom



We are constantly improving our products and therefore reserve the right to change designs and specifications.

• Link-Belt is a registered trademark.

