

4700 Series

4792 Capacity and Range Chart:

OPERATING HEIGHT	LOAD RATINGS IN LBS. WITH OUTRIGGERS EXTENDED								AREA OF OPERATION
	29 FT	44 FT	57 FT	71 FT	84 FT	92 FT			
5	78	47000							
8	71	36800	78	20300					
10	67	30900	75	20300	79	18400			
12	62	26100	73	20300	77	17400			
14	58	21900	70	19400	75	16800	78	14600	
16	53	18800	67	17300	73	15900	77	13800	
20	41	14200	61	13900	68	13400	73	12300	
25	21	10400	53	10900	63	10600	69	10400	
30			45	8625	57	8625	65	8425	
35			34	6925	51	6925	60	6925	
40			19	5225	44	5625	56	5625	
45					36	4625	50	4625	
50					26	3725	45	3725	
55					1	1225	38	3025	
60							31	2425	
65							21	2025	
70							32	1525	
75							25	1225	
80							14	825	

JIB CAPACITIES FOR ALL BOOM LENGTHS								
LOADED BOOM ANGLE	50°	55°	60°	65°	70°	75°	78°	80°
RETRACTED 26 FT JIB	725	1025	1525	2325	3225	4325	4925	5325
EXTENDED 44 FT JIB	425	725	1125	1525	2025	2525	2825	3125

NOTE: Please consult the Terex Cranes full-line brochure for a complete listing of standard features and optional equipment.

4792 Optional Mounting Configurations:

- Behind Cab (TC)
- Rear Mount (RM)
- Pedestal Mount (PM)

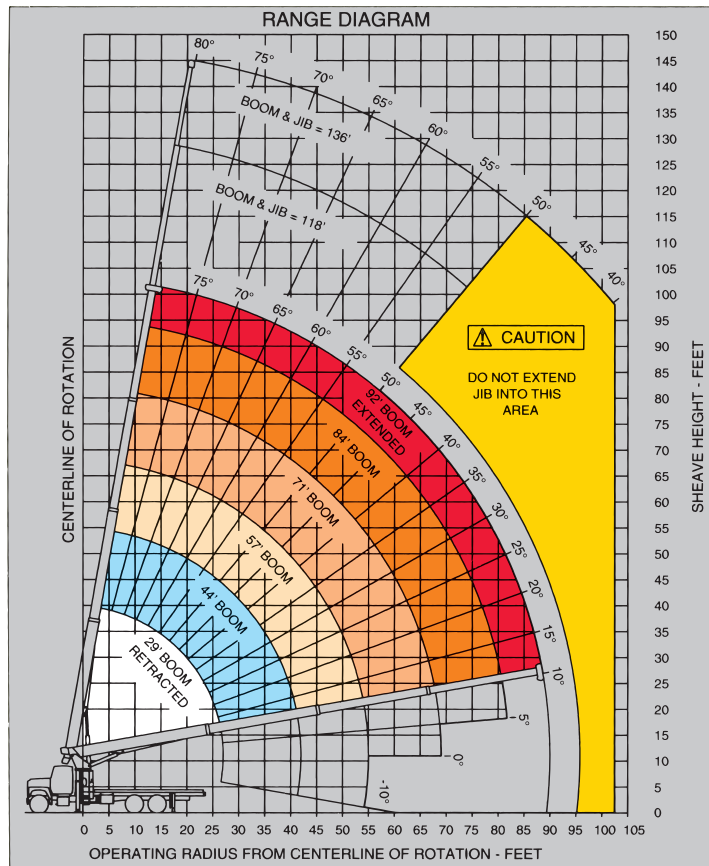
(Some standard features for the optional mounting configurations will vary. Please consult your Terex Cranes dealer or factory for chassis and mounting requirements.)

TC 4792 Minimum Chassis Requirements:

Chassis specifications are minimum for truck-crane mount. Not applicable to optional mounting configurations.

- Gross Vehicle Weight Rating52,000 lbs. (23,587 kg)
- Front Axle Weight Rating..... 18,000 lbs. (8,165 kg)
- Rear Axle Weight Rating34,000 lbs. (15,422 kg)
- Wheelbase246 in. (6,248 mm)
- Cab to Axle..... 168 in. (4,267 mm)
- Afterframe 100 in. (2,540 mm)
- TransmissionHeavy-Duty (Neutral lock-up required for automatic transmission)
- Electrical SystemHeavy-Duty
- Cooling System.....Heavy-Duty
- Frame Section Modulus.....26.0 in³ (426 cm³)
- RBM Per Frame Rail2,860,000 in./lbs. (32,951 kg-m)

Rope and Reeving:



NOTE: Diagrams depict recommended mounting dimensions. The dimensions of optional pedestal and rear mounts will vary. Please consult your dealer or Terex Cranes for specifics. Dimensions do not include load deflection.

1 PART LINE	2 PART LINE	3 PART LINE	4 PART LINE	5 PART LINE	<p>CAUTION OVERLOAD AND ANTI-TWO-BLOCK SYSTEMS MUST BE IN GOOD OPERATING CONDITION BEFORE OPERATING CRANE. REFER TO OWNER'S MANUAL. KEEP AT LEAST 3 WRAPS OF LOADLINE ON DRUM AT ALL TIMES. USE ONLY 9/16" DIAMETER CABLE WITH 33,600 LB. BREAKING STRENGTH ON THIS MACHINE.</p>
 OVERHAUL BALL ONE SHEAVE LOAD BLOCK	 ONE SHEAVE LOAD BLOCK	 ONE SHEAVE LOAD BLOCK	 TWO SHEAVE LOAD BLOCK	 AUX SHEAVE TWO-SHEAVE LOAD BLOCK	
LOADS UP TO 9,600 LBS. STD. CABLE	LOADS UP TO 19,200 LBS. STD. CABLE	LOADS UP TO 28,800 LBS. STD. CABLE	LOADS UP TO 38,400 LBS. STD. CABLE	LOADS UP TO 48,000 LBS. STD. CABLE	
6,720 LBS. ROT. RESIST. CABLE	13,440 LBS. ROT. RESIST. CABLE	20,160 LBS. ROT. RESIST. CABLE	26,880 LBS. ROT. RESIST. CABLE	33,600 LBS. ROT. RESIST. CABLE	

