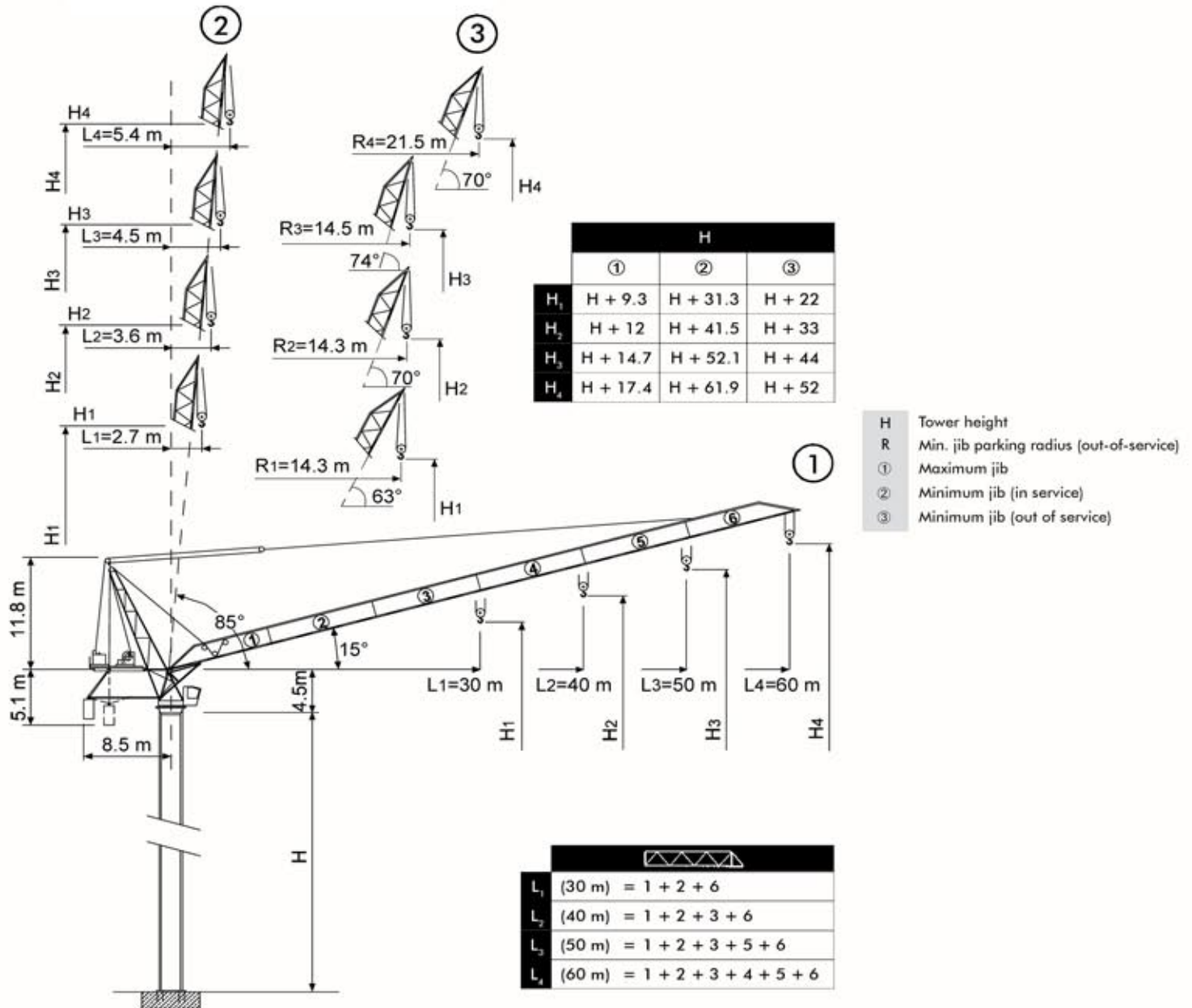


# COMEDIL CTL 400-24

## LUFFING CRANE

### HEIGHT / REACH CONFIGURATIONS



# COMEDIL CTL 400-24

## LUFFING CRANE SPECIFICATIONS

### Radius and Capacities

		CTL 400/A-24																	
		20	22	24	26	28	30	32	34	36	38	40	45	50	55	60			
12 t	- 25.7 m	12	12	12	11.84	10.99	10.23	9.56	8.98	8.45	7.99	7.57	6.68	5.97	5.38	4.9			
12 t	- 32.9 m	12	12	12	12	12	12	12	11.59*	10.9*	10.27*	9.71*	8.53*	7.6*					
18 t	- 23.1 m	18	18	17.26	15.89	14.72	13.7	12.81	12.02	11.33	10.7	10.14	8.95	8					
12 t	- 36.3 m	12	12	12	12	12	12	12	12	12	11.43*	10.85*							
18 t	- 25.3 m	18	18	18	17.53	16.24	15.12	14.14	13.28	12.51	11.82	11.24							
24 t	- 18.9 m	22.66	20.52	18.74	17.23	15.94	14.73	13.75	12.89	12.12	11.43	10.85							
12 t	- 30 m	12	12	12	12	12	12												
18 t	- 26.1 m	18	18	18	18	16.75	15.64												
24 t	- 19.4 m	23.29	21.09	19.25	17.7	16.36	15.25												

\* = + 400 kg [eq. - 30 m - 40 m - 50 m] ⓘ

258 * kVA	400 - 460 V / 50 - 60 Hz	CE 87/405

		m/min	t	kW		
	<b>110 AWL 120 LLC D1</b> <b>110 AWL 120 LLC D2</b>		0 ~ 40	12	110	630 m (LLC D1) 1140 m (LLC D2)
			0 ~ 55	8.6		
			0 ~ 75	6		
			0 ~ 102	4.2		
			0 ~ 116	0.6		
		0 ~ 27	18			
		0 ~ 37	12.9			
		0 ~ 50	9			
		0 ~ 68	6.3			
		0 ~ 77	0.9			
		0 ~ 20	24			
		0 ~ 27.5	17.2			
		0 ~ 37.5	12			
		0 ~ 51	8.4			
		0 ~ 58	1.2			

	<b>LWL 9000/D2</b>	2.1 min	90 kW
	<b>SCC 2 2 132</b>	0 ~ 0.65 r.p.m.	2 x 14 kW
	<b>TSR 2 RG 4 M 8</b>	12 ~ 24 m/min	4 x 80 Nm
	ⓘ		

- Hoisting
- Luffing
- Slewing
- Travelling
- Directive on noise level
- Consult us
- Power requirements
- Power supply

# MOBILE CRANE CO., INC.

5900 Second Ave. South  
Seattle, WA 98108-3203  
www.mobilecraneco.com  
Tel (206) 767-4767  
(800) 886-8151  
Fax (206) 763-9975

