

Hydraulic Loaders

16000, 24562 and 28562



► Hydraulic Loaders

When your application demands precise handling and placement of palletized material — even in tight places — look to the IMT® family of hydraulic loaders. IMT loaders have excellent lift capacity, extensive reach, precise maneuverability, and exceptional operator visibility. Loaders are available with an optional fully proportional radio remote control for increased productivity.

16000

Hydraulic Fork Assembly

Top Seat



A-Frame Stabilizer
(16000 only)

24562 and 28562

Hydraulic Fork Assembly

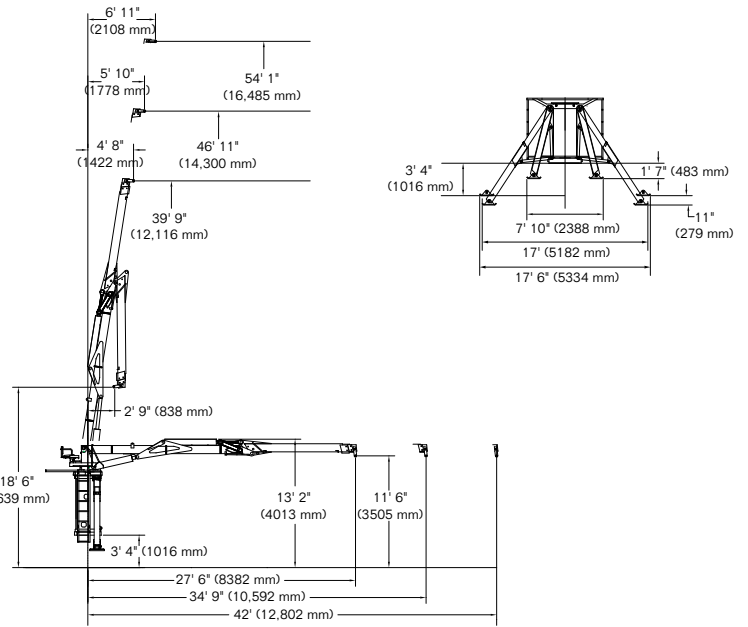
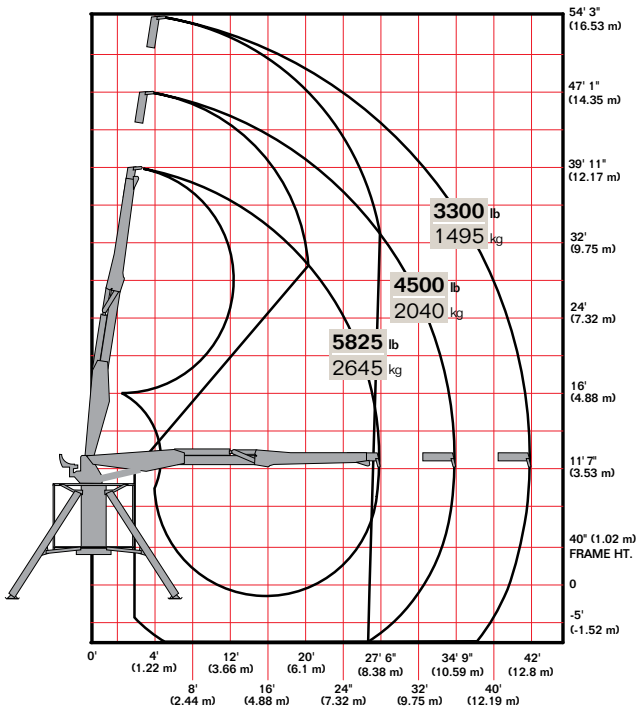


Specifications

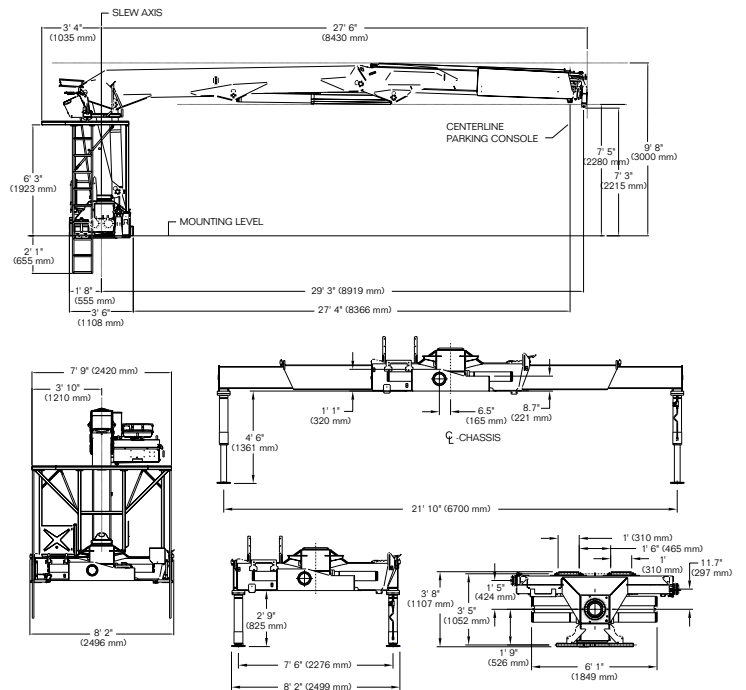
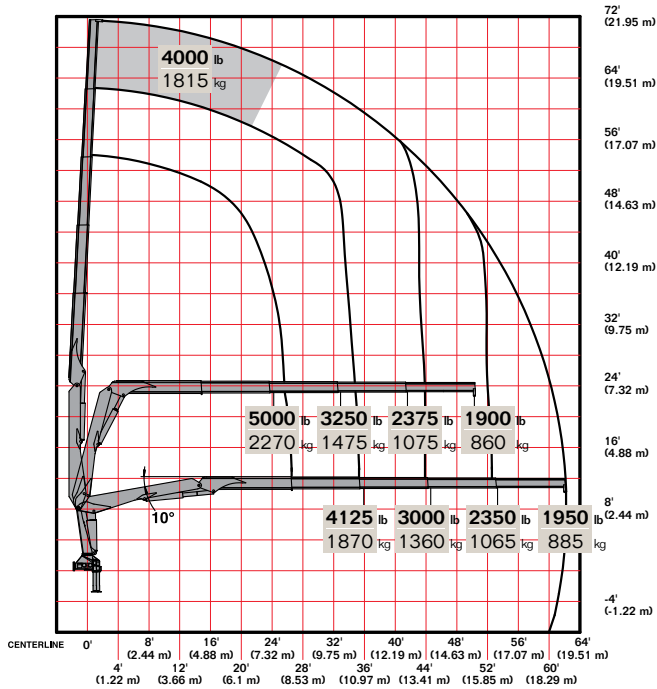
	16000	24562	28562
Crane Rating	160,000 ft-lb (22.1 tm)	131,655 ft-lb (18.2 tm)	161,490 ft-lb (22.3 tm)
Horizontal Reach	42' (12.8 m)	62' 3" (19 m)	62' 3" (19 m)
Vertical Reach*	54' 1" (16.5 m)	71' 4" (21.8 m)	71' 4" (21.8 m)
Max. Lift Capacity	5825 lb (2642 kg)	5000 lb (2270 kg)	5700 lb (2585 kg)
Lifting Height	54' 3" (16.5 m)**	75' 6" (23 m)***	75' 6" (23 m)***
Hydraulic Extension	14.5" (4.4 m)	35' 4" (10.6 m)	35' 4" (10.6 m)

*From mounting surface. **Based on 40" (101 cm) mounting height. ***Based on 50" (127 cm) mounting height.

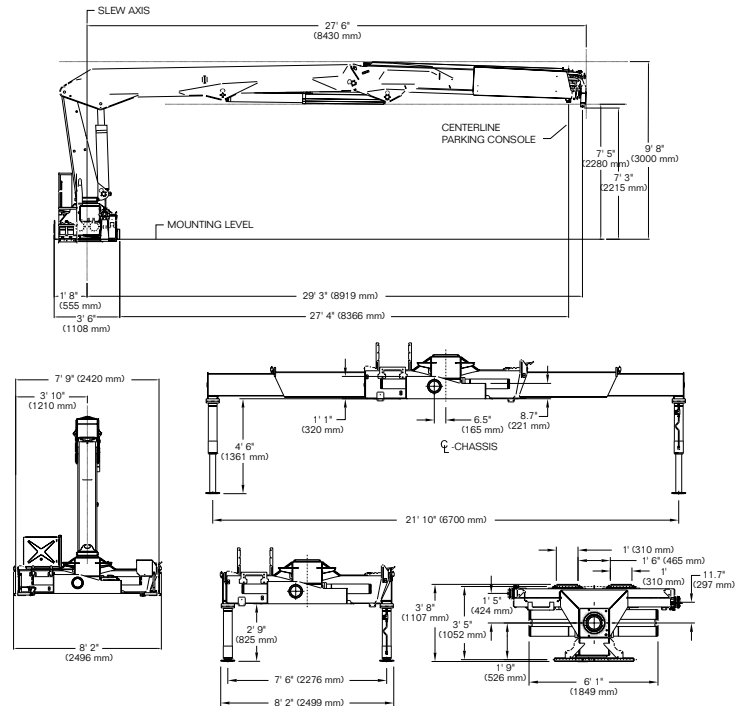
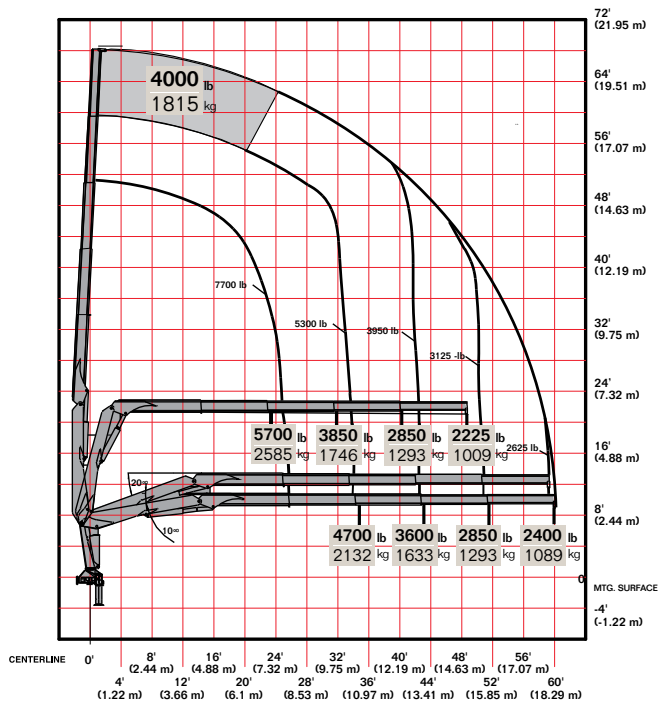
▶ 16000 Capacity Chart



▶ 24562 Capacity Chart



► 28562 Capacity Chart



Power Source

- Standard integral-mounted piston hydraulic pump and PTO application

Cylinder Holding Valves

- Integral-mounted counterbalance valves or load-holding check valves
- Prevention of sudden cylinder collapse in case of hose failure

Rotation System

16000

- 450 degree turntable bearing powered by hydraulic motor
- Heavy-duty gearbox equipped with a heat-treated pinion

24562 and 28562

- 420 degree rack and pinion
- Counterbalance valve on each cylinder to stop motion in case of hose failure
- Continuous oil bath to reduce friction and enhance life

Hydraulic System

- Open-centered system (24562 only)
- Closed-centered system (28562 only)
- All functions, excluding stabilizers, are operated by joysticks and foot pedals (16000 only)
- All functions are radio remote operated with manual backup (24562 only)
- Controls are located at the base of the crane for stabilizer operation
- Standard hydraulic pressure filters

Overload System

16000

- Hydraulic pressure sensor blocks load-increasing functions when full capacity is attained

24562 and 28562

- Electronic rated capacity limitation (RCL) 5300 blocks load-increasing functions when full capacity is attained

Standard Features

16000

- Up to 42' (12.8 m) of horizontal reach
- Top seat control
- Platform
- Oil cooler

24562

- Up to 62' (19 m) of horizontal reach
- Radio remote
- Top seat with manual backup controls
- Oil cooler

28562

- Up to 62' (19 m) of horizontal reach
- Radio remote
- Oil cooler

Options

16000 only

- Fully proportional radio remote control
- High frame base

Specifications

	16000	24562	28562
Operating Weight	10,500 lb (4762 kg)	12,060 lb (5470 kg)	11,468 lb (5202 kg)
Crane Storage Height	13' 2" (4 m)	13' 5" (4.09 m)	13' 5" (4.09 m)
Mounting Space	36" (914 mm)	44" (1118 mm)	44" (1118 mm)
Rotational Torque	30,910 ft-lb (4.2 tm)	35,008 ft-lb (4.8 tm)	35,008 ft-lb (4.8 tm)
Rotation	450°	420°	420°
Optimum Pump Capacity	16/16 gpm (60/60 L/min)	16/16 gpm (60/60 L/min)	26 gpm (100 L/min)
Oil Reservoir Capacity	40 gal (90 L)	55 gal (210 L)	55 gal (210 L)
Stabilizer Extension Span	17' 6" (5.3 m) (at ground level)	22' (6.7 mm) (hydraulic out/hydraulic down)	22' (6.7 mm) (hydraulic out/hydraulic down)

Minimum Chassis Specifications

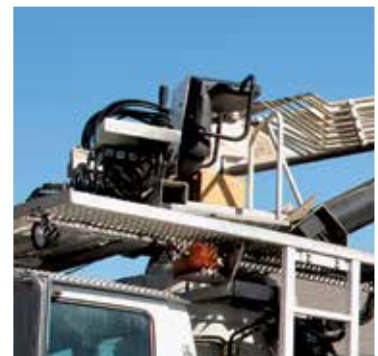
	16000	24562	28562
Front Axle Rating (GAWR)	16,000 lb (7257 kg)	18,000 lb (8165 kg)	18,000 lb (8165 kg)
Rear Axle Rating (GAWR)	40,000 lb (18,144 kg)	40,000 lb (18,144 kg)	40,000 lb (18,144 kg)
Resistance to Bending Moment Minimum	3,300,000 in-lb (38,021 kg-m)	3,300,000 in-lb (38,021 kg-m)	3,300,000 in-lb (38,021 kg-m)



A-Frame (16000 only)



Power out and down (24562 and 28562 only)



Top Seat Control

Controls operated by pilot operated joysticks and foot pedals from the top seat and platform allow operators to maneuver materials with great operator visibility. An optional radio remote control is available for those that choose to have both controls. (16000 only)

Stabilizers

A sturdy design for excellent stability is ideal for loading and unloading palletized goods.



Nothing Says Commitment Like The Diamond.™

IMT has been meeting the needs of our customers for over 50 years and none of it would have been possible without a distributor network that's second to none. IMT distributors offer fast, knowledgeable service and the ability to help customers find the right product for every application. When you're looking for reliable equipment and dependable service, remember IMT.



An Oshkosh Corporation Company

Iowa Mold Tooling Co., Inc.
500 Highway 18 West
Garner, Iowa 50438
800-247-5958 • www.imt.com

IMT reserves the right to make changes in engineering, design, and specifications; add improvements; or discontinue manufacturing at any time without notice or obligation. IMT, the IMT logo and NOTHING SAYS COMMITMENT LIKE THE DIAMOND are registered trademarks or trademarks of Iowa Mold Tooling Co., Inc., Garner, IA, USA.
© 2014 Iowa Mold Tooling Co., Inc. All Rights Reserved.

02/14