



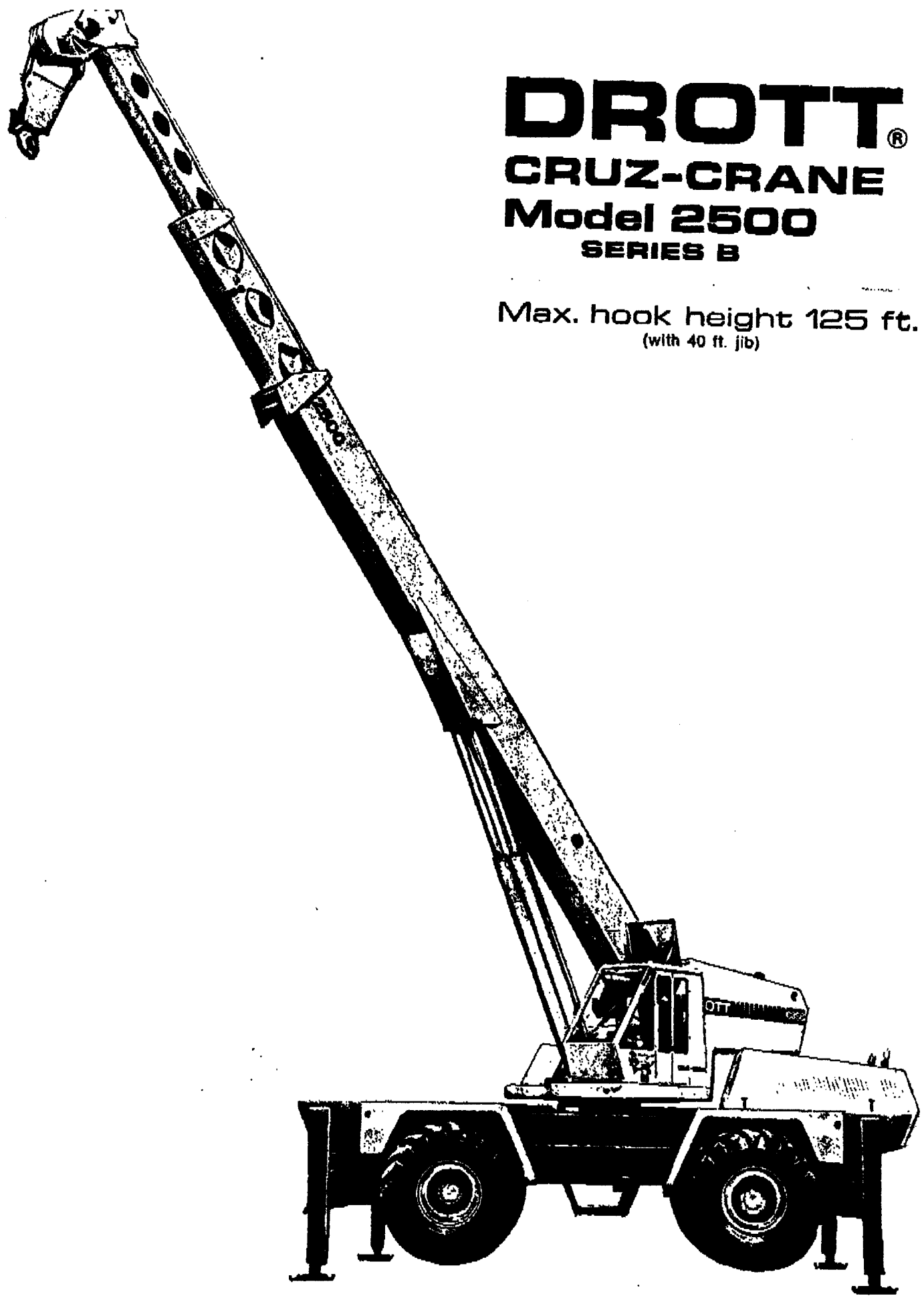
DROTT®

CRUZ-CRANE

Model 2500

SERIES B

Max. hook height 125 ft.
(with 40 ft. jib)



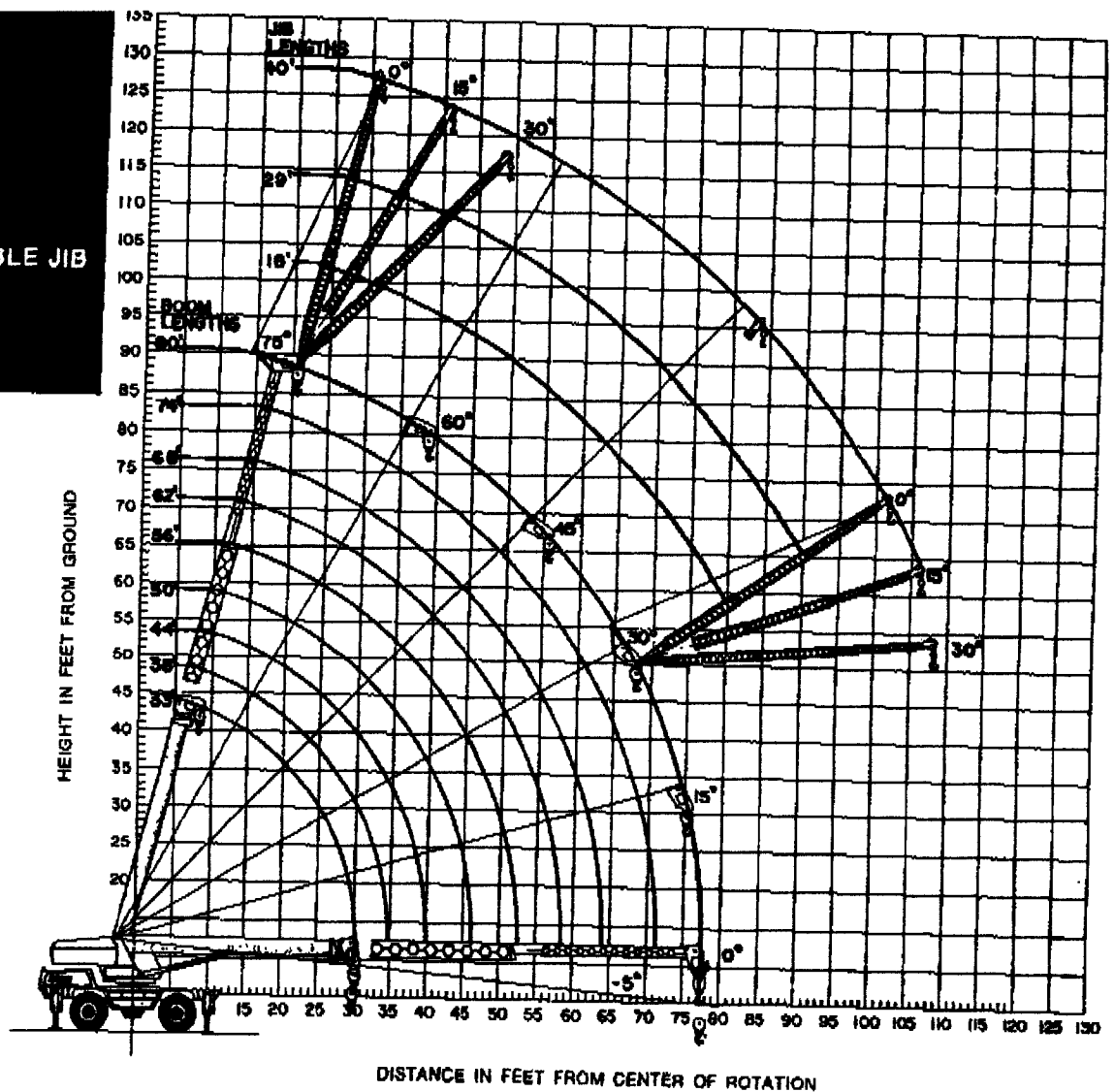
RANGE CHART

3-SECTION BOOM
33' TO 80'

TOPPING RANGE
5' TO 75'

MANUALLY EXTENDABLE JIB
18' TO 40'

PCSA Class 12-130

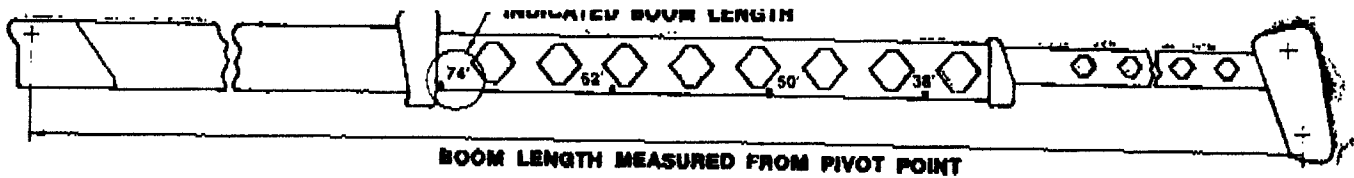


DROTT 2500 CRUZ-CRANE LOAD RATING CHART

Maximum Rating: 30 Tons

- The *rated loads* are the maximum lifting capacities as determined by boom length and operating radius. The *operating radius* is the horizontal distance from a projection of the axis of rotation to the supporting surface, before loading, to the center of vertical hoist line or tackle with load applied.
- The rated loads shown are for machines with 5200 lbs. of counterweight on the upper and do not exceed 85% of actual tipping. These ratings are based on freely suspended loads with the crane leveled and standing on a firm, uniform supporting surface. Practical working loads depend on supporting surface, wind, and other factors affecting stability. Hazardous surroundings, experience of personnel, and proper handling must all be taken into account by the operator.
- Rated loads shown in the black areas are based on structural strength and/or strength of material and not on the stability of the machine.
- The weights of all load handling devices such as hooks, hook blocks, slings, etc., except the hoist rope shall be considered as part of the load.
- Ratings with outriggers are based on outriggers fully extended and set to a distance of 8' 10" from the longitudinal axis of the carrier to the outrigger float pivot connection and tires clear of the ground and unloaded.
- Ratings on rubber depend on tire capacity and condition of tires inflated to 75 PSI
- When the 40' jib is stowed under the main boom, deduct 700 lbs. from the main boom load ratings.
- When the 40' jib is erected on the boom head, deduct 2000 lbs. from the main boom load ratings.
- When using the main winch and auxiliary winch simultaneously do not exceed the capacities given in the jib chart.
- To determine the controlled freefall load, take 25% of jib chart load or boom load for a given boom or jib length and boom angle, and limit this load to 1000 lbs.
- Positioning or operation at radii and boom or jib length beyond the maximums and minimums shown, is not intended or approved. For boom lengths not shown, use load ratings of the next longer boom.
- The power operated, telescoping boom sections are hydraulically sequenced to extend and retract equally for a maximum of 23' 6" for each section. Do not operate with one section extended and the other retracted. Any load within the limits of the load chart may be telescoped; however, the maximum load is limited by hydraulic pressure, boom angle, and boom lubrication.
- Main boom fully extended with jib erected should be lifted from the ground over the front with outriggers set.

14. OPERATION OF THIS EQUIPMENT IN EXCESS OF RATING CHARTS AND DISREGARD OF THE INSTRUCTIONS IS DANGEROUS AND VOIDS THE WARRANTY.



RATED LIFTING CAPACITIES

33' - 80' 3 SECTION
FULL POWER
TELESCOPING BOOM

Cable Reeving No. of Parts	5/8" 6 x 37 IP8-IWRC 4 Sheeve Block
1	7,500 lbs.
2	15,000 lbs.
3	22,500 lbs.
4	30,000 lbs.
5	37,500 lbs.
6	45,000 lbs.
7	52,500 lbs.
8	60,000 lbs.

MODEL 2500 CRUZ-CRANE SERIES B

40' MANUALLY TELESCOPING JIB CAN BE OPERATED IN 18', 29', OR 40' LENGTHS

Minimum Main Boom Angle	NO OFFSET			15° OFFSET			30° OFFSET		
	40' Jib	29' Jib	18' Jib	40' Jib	29' Jib	18' Jib	40' Jib	29' Jib	18' Jib
75°	6000	6500	7500	3300	4200	5400	2200	3000	4000
70°	4500	5400	6500	2700	3800	5000	1800	2700	3700
65°	3600	4600	5700	2300	3400	4500	1600	2550	3400
60°	3000	4000	5100	2000	3100	4100	1400	2350	3100
55°	2500	3500	4500	1800	2800	3700	1300	2200	2800
50°	2200	3100	4000	1600	2500	3300	1200	2000	2550
45°	1900	2700	3500	1400	2300	2800	1100	1750	2250
40°	1700	2400	3000	1300	2000	2500	1000	1550	2000
30°	1400	1700	2000	1000	1400	1700	800	1100	1400

LIFT CAPACITIES OVER FRONT (OUTRIGGERS DOWN)

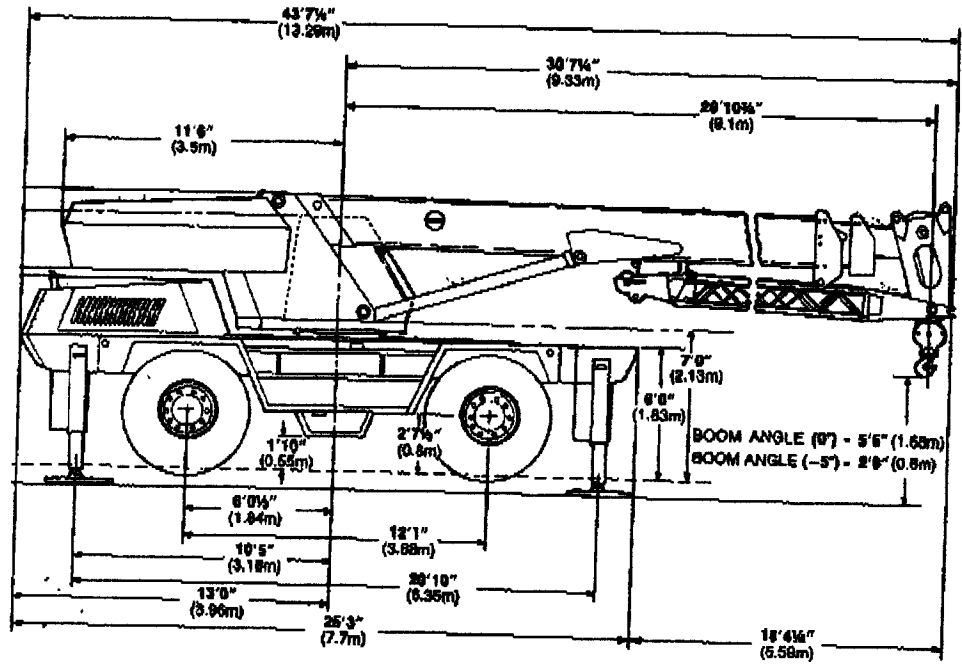
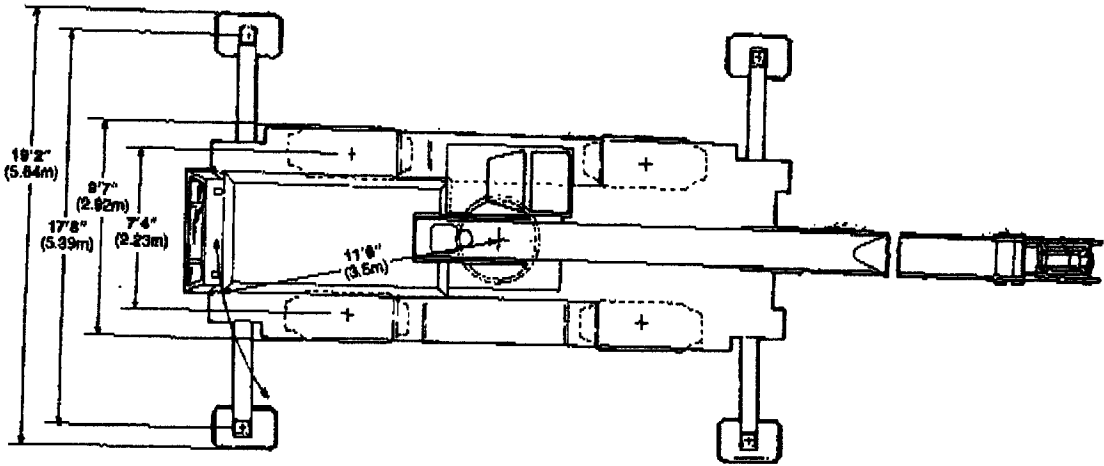
Working Radius	BOOM LENGTH									
	33	38	44	50	56	62	68	74	80	
10	60000	55000	50000							
12	60000	50000	47500	45000						
15	50000	47500	45000	40000	36000	34500				
20	37000	37000	37000	34000	32000	30000	28000	23000	20000	
25	28500	28500	28500	28500	28000	25000	23500	21500	18500	
30	22500	22500	22500	22500	22000	21000	20000	18500	17000	
35		18500	18500	18500	18500	17500	17000	15500	14500	
40			16000	15500	15500	15000	15000	13000	12000	
45				13000	13000	13000	13000	11000	10000	
50					11500	11500	11500	10000	9000	
55						10000	10000	9000	7500	
60							8000	8000	6500	
65								7500	6000	
70									6500	
75									5000	
77									4000	

LIFT CAPACITIES 360° (OUTRIGGERS DOWN)

Working Radius	BOOM LENGTH									
	33	38	44	50	56	62	68	74	80	
10	60000	55000	50000							
12	60000	50000	47500	45000						
15	50000	47500	45000	40000	36000	34500				
20	37000	37000	37000	34000	32000	30000	28000	23000	20000	
25	28500	28500	28500	28500	28000	25000	23500	21500	18500	
30	21500	21500	21500	21500	21500	21000	20000	18500	17000	
35		16500	16500	16500	16500	16500	16500	15500	14500	
40			13000	13000	13000	13000	13000	13000	12000	
45				10500	10500	10500	10500	10500	10000	
50					9000	9000	9000	9000	9000	
55						7500	7500	7500	7500	
60							6500	6500	6500	
65								5500	5500	
70									4500	
75									4000	
77									3500	

MODEL 2500

General Dimensions



In order that product improvement may be introduced, DROTT reserves the right to change specifications without notice. Illustrations in this literature include standard and or non-standard equipment.

Drott Manufacturing
 P.O. Box 1087, Wausau, Wisconsin 54401

Division of J I Case
 A Tenneco Company

