



HT30KX

FEATURES

- * 5,000 lb. Maximum Lifting Capacity
- * 30,000 ft.-lb. Moment Rating
- * Fully Hydraulic Power
- * Hexagonal Boom Construction
- * 400° Power Rotation
- * Meets ANSI B30.5 Safety Standards
- * Meets OSHA 1910.180 Requirements

HT30KX-P, Standard Feature Group:

- * Proportional Control Valve
- * Pendant with Variable Speed Trigger Switch
- * Fully hydraulic boom extension 10-20 ft.
- * High Efficiency Hydraulic Planetary Winch
- * Load-Holding Counterbalance on All Cylinders
- * Hydraulic Requirements: 4 GPM @ 3,000 PSI, 10 gal. Reservoir

HT30KX, Basic Feature Group Available At Significant Savings:

- * Non-proportional Control Valve
- * Pendant with Pre-Set Speed Toggle Switches
- * Single-Stage Hydraulic Extension 10-16 ft.
- * Manual Boom Extension 16-20 ft.
- * High Efficiency Hydraulic Planetary Winch
- * Load-Holding Counterbalance on All Cylinders
- * Hydraulic Requirements: 2 GPM @ 3,000 PSI, 6 gal. Reservoir

MINIMUM REQUIREMENTS

- * 11,000 lb. GVWR Chassis
- * Outriggers: Rear
- * PTO, Pump and Reservoir

LIFTING CAPACITIES	
REACH (FT.)	CAPACITY (LBS.)
6	5,000
10	3,000
16	1,875
20	1,500

STANDARD EQUIPMENT

- * Capacity Overload Shut-Off System
- * Anti-Two-Blocking System
- * 80 ft. of 5/16" Aircraft-Quality Wire Rope
- * Remote Control Pendant: 25 ft. Cord and Quick Disconnect
- * Snatch Block with Swivel Hook Safety Latch

OPTIONAL EQUIPMENT

- * Radio Remote Controls
- * Hydraulic and Manual Outrigger Packages
- * Hydraulic Pumps and Reservoirs
- * Mounting Pedestal for Platform Bodies
- * Boom Rests

Specifications subject to change without notice.



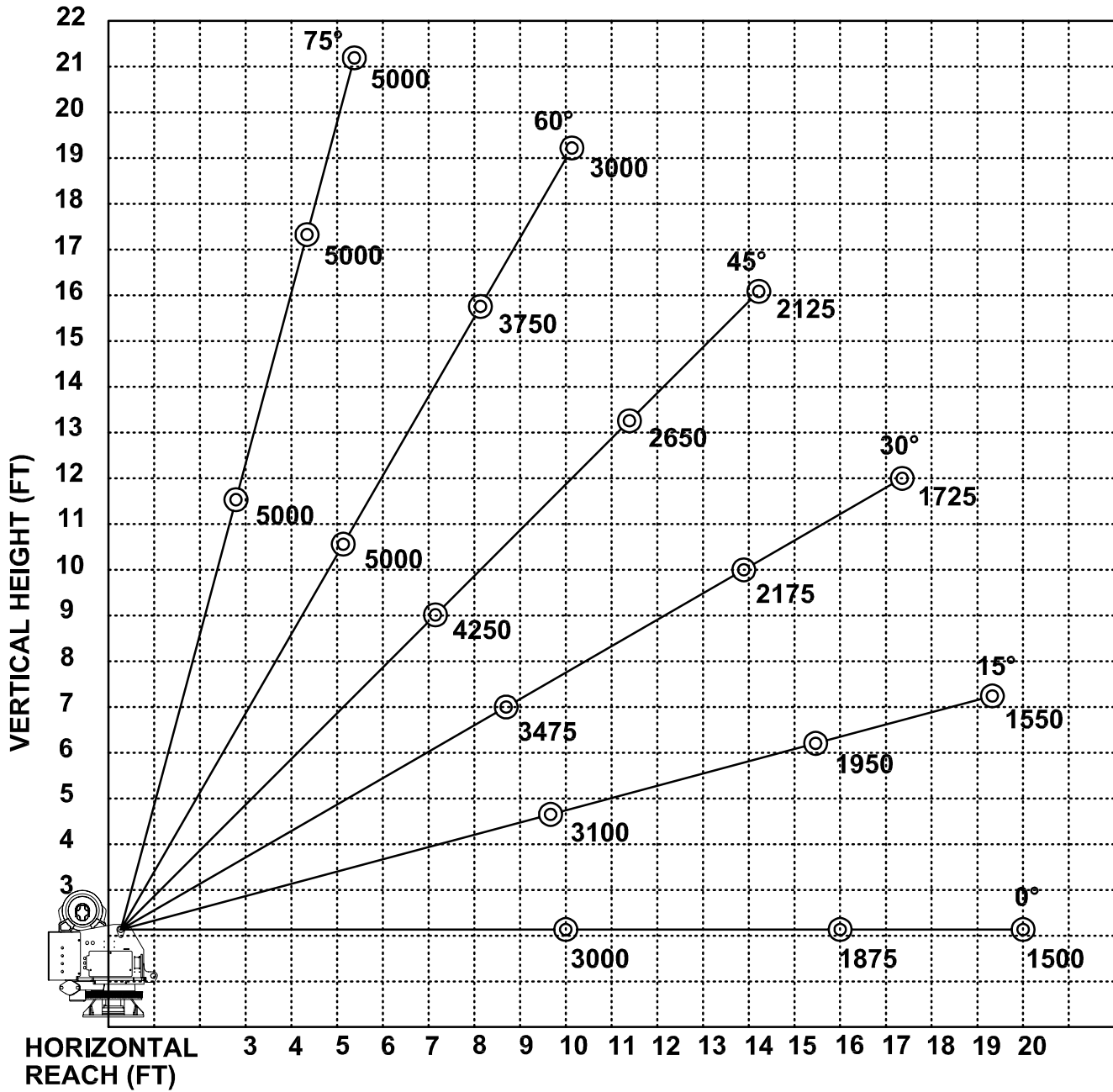
RUGGED. RELIABLE. REAL.

12110 Best Place Cincinnati, OH 45241
 800-226-2238 internetsales@venturo.com
 www.venturo.com

DISTRIBUTED BY:



HT30K(X) - 10-16-20 BOOM MAXIMUM CAPACITY CHART



**MUST USE SNATCH BLOCK
FOR LOADS OF 2500 LBS.
AND GREATER**