



SINCE 1982

FOLD-A-WAY
CRANE

www.westernmule.com

M2000

Lifting Capacity: 2,000 lbs.

FEATURES:

- ▶ Gas Spring Lift-Assisted Boom
- ▶ 2000 lbs Max. Lifting Capacity
- ▶ Low Profile Design
- ▶ 12 Position Manually Adjustable Boom
- ▶ 6' Horizontal Boom Reach
- ▶ 360° Manual Rotation
- ▶ Positive Rotation Lock - 12 Fixed Points



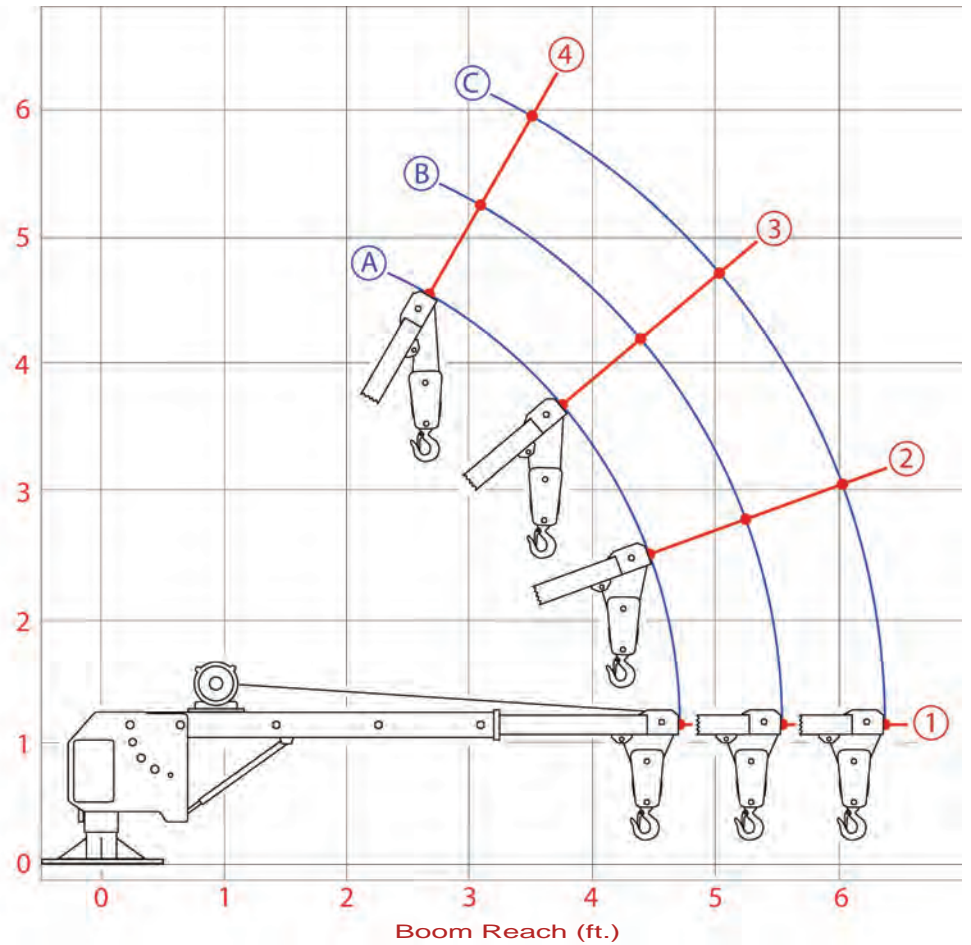
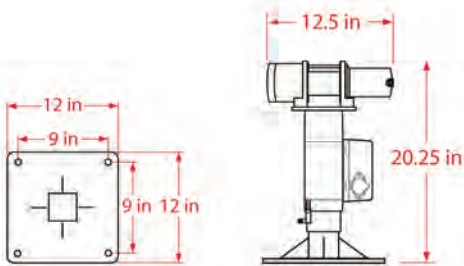
- ▶ 12V-DC Powered, Up/Down, with Dual Internal Braking
- ▶ Double-Line, 35' x 3/16" Galvanized Aircraft Cable and Safety Hook
- ▶ 10' Detachable Remote Pendant Control
- ▶ Light-Gray Powder Coat Finish
- ▶ 1-Year Warranty



*Shown above with Tall Pedestal for Pickup Bed Mounting (WO-8022).
Custom Pedestal Heights (WO-8026) and custom configurations available.*

H313

Load Chart			
Boom Position	A	B	C
4	2000	1900	1750
3	1775	1625	1450
2	1500	1375	1175
1	1350	1125	900



Optional mast heights, mounting bases and custom configurations available.

SPECIFICATIONS

Max. Lifting Capacity	2000 Lbs
Winch Power	12V-DC, 80 Amp Max.
Circuit Breaker	Included
Boom Horizontal Reach	52" - 72"
Boom Positions	12
Rotation	360° Manual
Bearings	3 Needle
Lifting Cable	35' x 3/16" (Double-line)
Control	10' Remote (Detachable)
Mounting Base	12" x 12"
Finish	Lt. Gray Powder-Coat
Shipping Weight (Lbs)	245 lbs.
Warranty (excludes lifting cable)	1-Year
Western Mule Cranes reserves the right under the Product Improvement Policy to change specification without notice or reference to specification used herein.	

OPTIONS

- ▶ **WA-26** Boom Rest
- ▶ **WA-34** Outrigger
- ▶ **WO-39** Wireless Remote
- ▶ **WO-28M** Stainless Steel Cable
- ▶ **WO-8022** Tall Pedestal for Pickup Bed Installation
- ▶ **WO-8026** Custom Pedestal Height
- ▶ Optional Cable Lengths
(Specify when ordering)

H313

