

 **SHUTTLELIFT®**

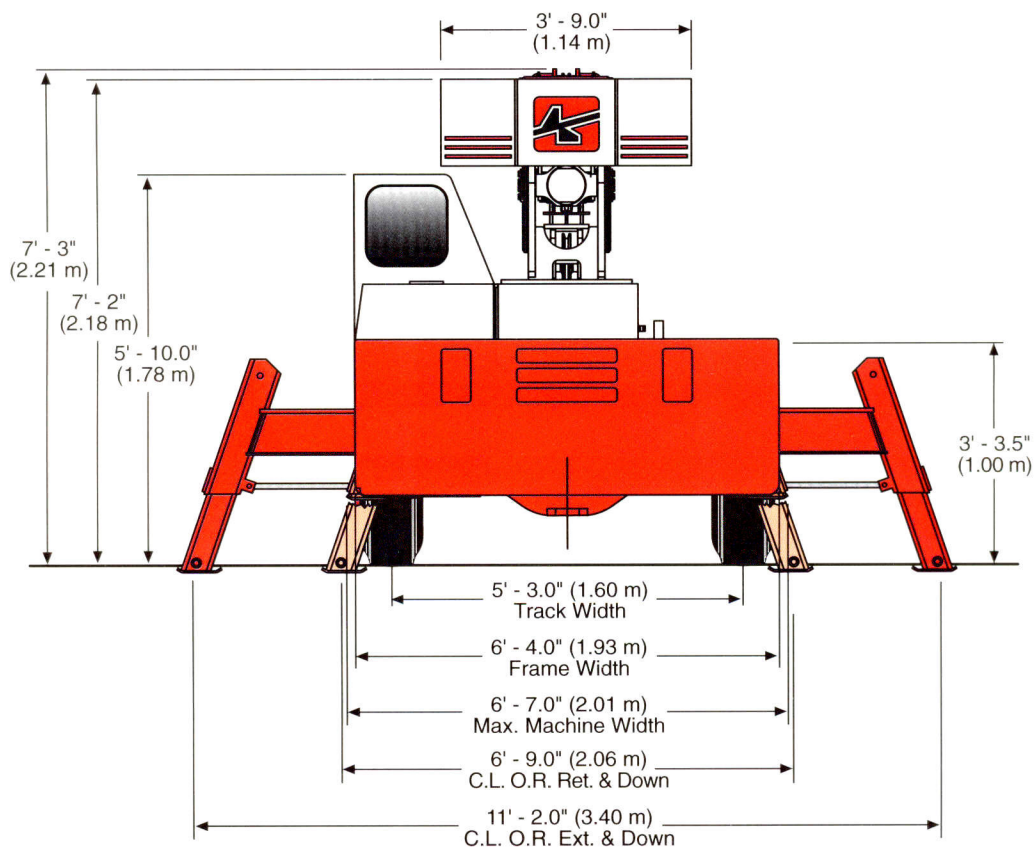
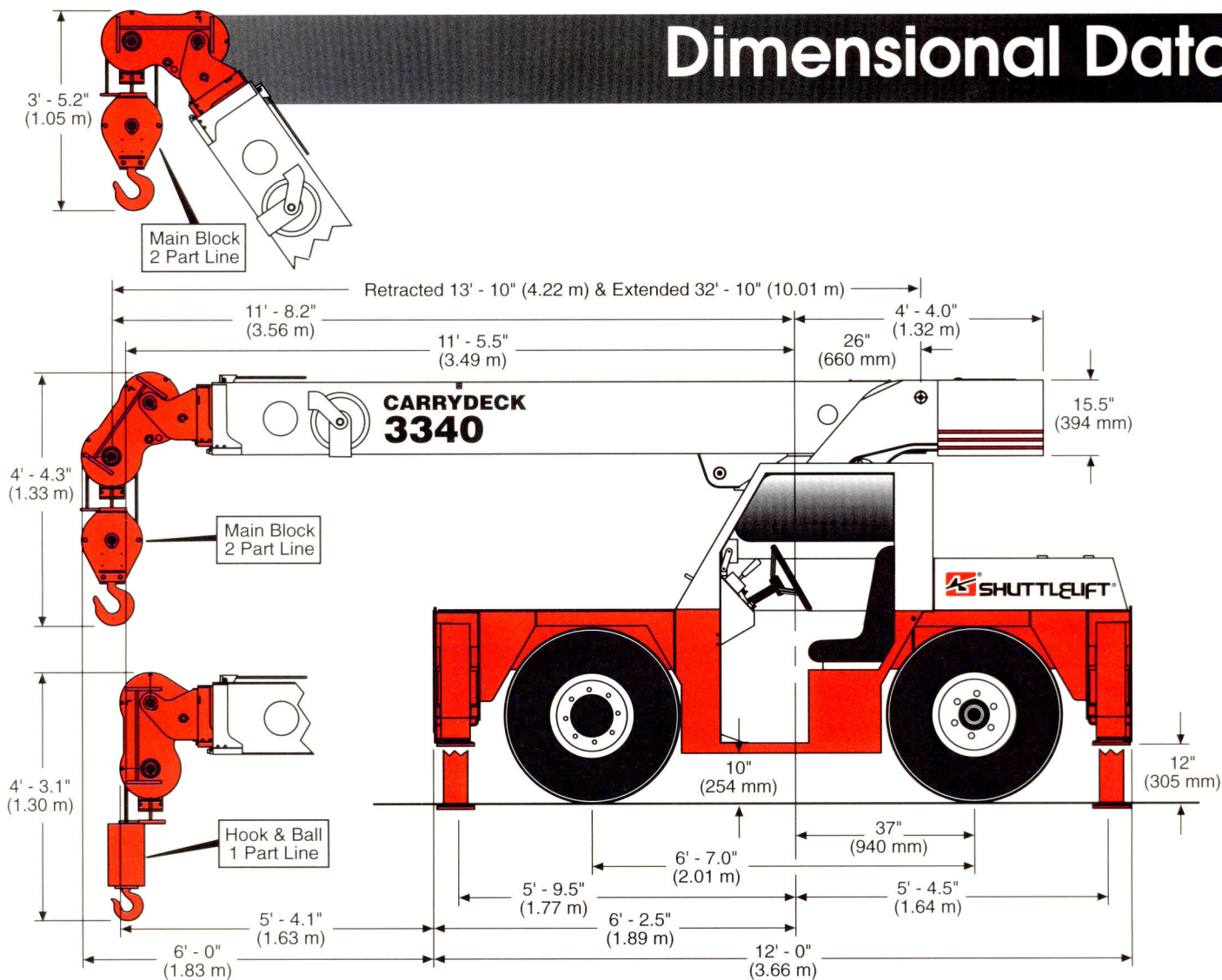
NEW 9 TON CAPACITY
Carrydeck® Industrial Crane



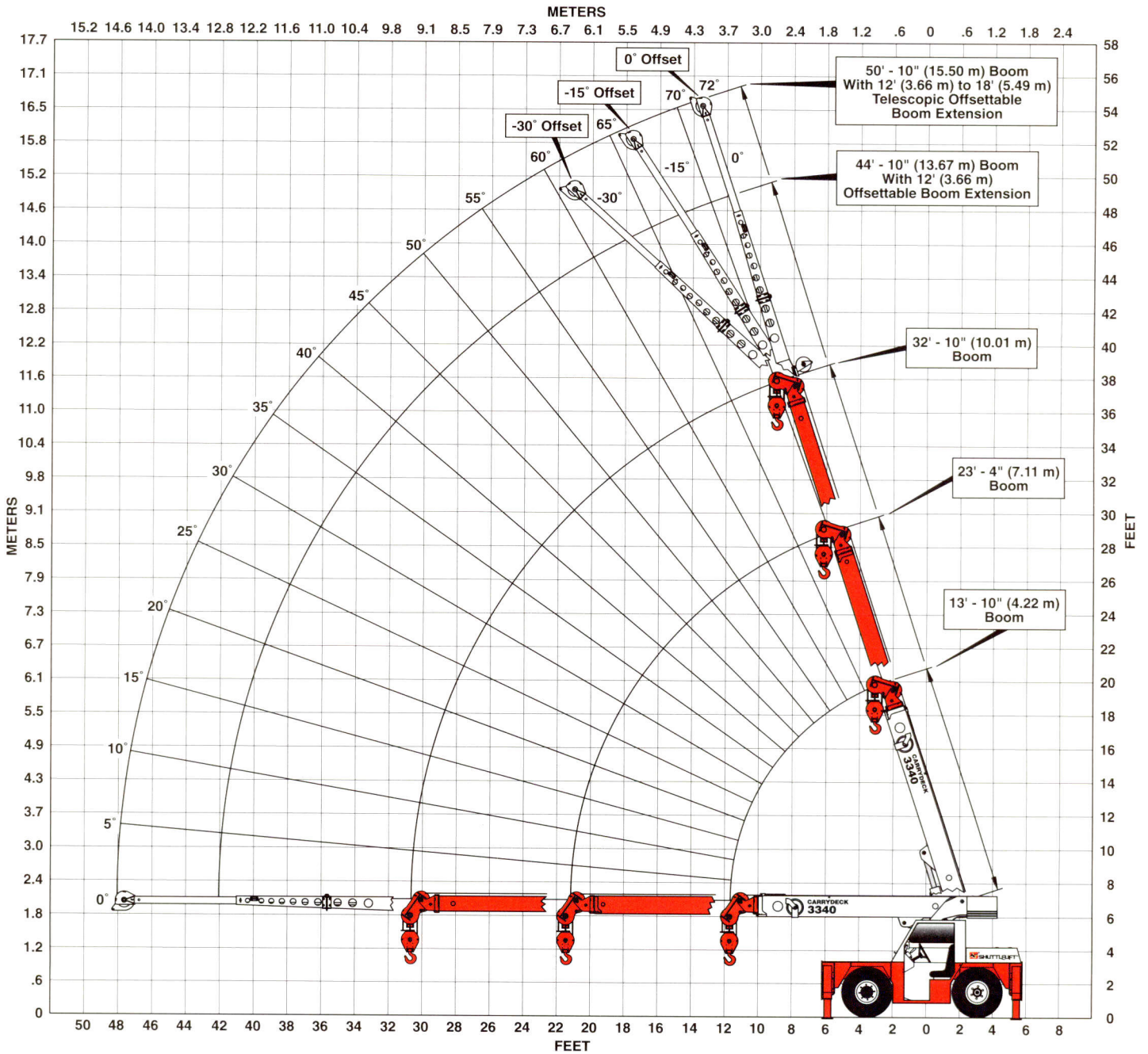
•Shown w/optional items

3340 Dimensions and Specifications

Dimensional Data

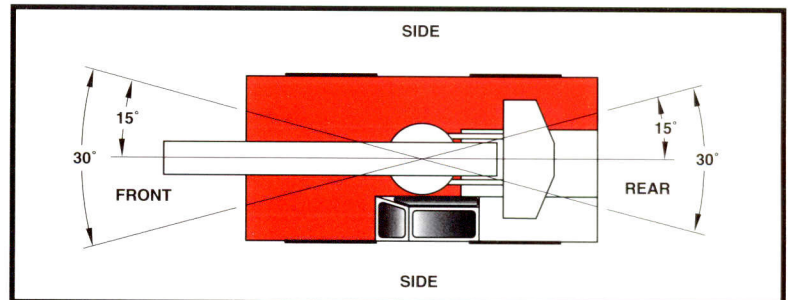


Operating Data



RATING REDUCTIONS FOR LOAD HANDLING DEVICES INSTALLED

DEVICE	FROM MAIN BOOM	FROM JIB
MAIN BLOCK	140 lb (64 kg)	—
HOOK & BALL	100 lb (45 kg)	100 lb (45 kg)
JIB STOWED	0	—
JIB DEPLOYED	450 lb (204 kg)	0



Rated Load Capacities

MAIN BOOM LOAD RATINGS Any Boom Length				
On Outriggers			On Rubber	
Radius ft-in (m)	Extended & Down 360° Retracted & Down Front/Rear	Rating Retracted & Down 360°	Front Rating up to 2.5 mph (4.02 kph)	Rating 360° Static Only
3' (0.91 m)	18,000 lb (8165 kg)	18,000 lb (8165 kg)	10,000 lb (4536 kg)	10,000 lb (4536 kg)
5' (1.52 m)	18,000 lb (8165 kg)	18,000 lb (8165 kg)	10,000 lb (4536 kg)	10,000 lb (4536 kg)
6' (1.83 m)	15,700 lb (7121 kg)	14,400 lb (6532 kg)	9,500 lb (4309 kg)	7,700 lb (3493 kg)
8' (2.44 m)	12,200 lb (5534 kg)	9,400 lb (4264 kg)	8,900 lb (4037 kg)	5,400 lb (2449 kg)
10' (3.05 m)	10,200 lb (4627 kg)	6,700 lb (3039 kg)	6,100 lb (2767 kg)	4,100 lb (1860 kg)
12' (3.66 m)	8,400 lb (3810 kg)	5,000 lb (2268 kg)	4,600 lb (2087 kg)	3,000 lb (1361 kg)
14' (4.27 m)	7,100 lb (3221 kg)	3,800 lb (1724 kg)	3,600 lb (1633 kg)	2,400 lb (1089 kg)
16' (4.88 m)	6,000 lb (2722 kg)	3,100 lb (1406 kg)	2,900 lb (1315 kg)	2,000 lb (907 kg)
18' (5.49 m)	5,000 lb (2268 kg)	2,600 lb (1179 kg)	2,400 lb (1089 kg)	1,600 lb (726 kg)
20' (6.10 m)	4,300 lb (1950 kg)	2,100 lb (953 kg)	2,000 lb (907 kg)	1,200 lb (544 kg)
22' (6.71 m)	3,700 lb (1678 kg)	1,800 lb (816 kg)	1,700 lb (771 kg)	1,050 lb (476 kg)
24' (7.32 m)	3,300 lb (1497 kg)	1,500 lb (680 kg)	1,500 lb (680 kg)	950 lb (431 kg)
26' (7.92 m)	2,900 lb (1315 kg)	1,300 lb (590 kg)	1,300 lb (590 kg)	800 lb (363 kg)
28' (8.53 m)	2,600 lb (1179 kg)	1,150 lb (522 kg)	1,150 lb (522 kg)	700 lb (318 kg)
30' (9.14 m)	2,400 lb (1089 kg)	1,050 lb (476 kg)	1,000 lb (454 kg)	600 lb (272 kg)
30'-10" (9.39 m)	2,300 lb (1043 kg)	1,000 lb (454 kg)	900 lb (408 kg)	500 lb (227 kg)

BOOM EXTENSION RATINGS ON OUTRIGGERS Extended and Down 360° or Retracted and Down Front/Rear (Any Main Boom Length)						
Main Boom Angle	12' (3.66 m) BOOM EXTENSION			12'-18' (3.66 m-5.49 m) TELESCOPIC BOOM EXTENSION		
	0° Offset	15° Offset	30° Offset	0° Offset	15° Offset	30° Offset
72°	7,500 lb (3402 kg)	5,100 lb (2313 kg)	3,500 lb (1588 kg)	6,300 lb (2858 kg)	3,300 lb (1497 kg)	2,300 lb (1043 kg)
70°	7,000 lb (3175 kg)	4,800 lb (2177 kg)	3,400 lb (1542 kg)	5,600 lb (2540 kg)	3,100 lb (1406 kg)	2,200 lb (998 kg)
65°	6,100 lb (2767 kg)	4,200 lb (1905 kg)	3,100 lb (1406 kg)	4,400 lb (1996 kg)	2,700 lb (1225 kg)	2,000 lb (907 kg)
60°	4,500 lb (2041 kg)	3,700 lb (1678 kg)	2,900 lb (1315 kg)	3,600 lb (1633 kg)	2,400 lb (1089 kg)	1,900 lb (862 kg)
55°	3,500 lb (1588 kg)	3,100 lb (1406 kg)	2,700 lb (1225 kg)	2,900 lb (1315 kg)	2,200 lb (998 kg)	1,800 lb (816 kg)
50°	2,800 lb (1270 kg)	2,500 lb (1134 kg)	2,400 lb (1089 kg)	2,400 lb (1089 kg)	2,000 lb (907 kg)	1,750 lb (794 kg)
45°	2,400 lb (1089 kg)	2,200 lb (998 kg)	2,100 lb (953 kg)	2,000 lb (907 kg)	1,800 lb (816 kg)	1,700 lb (771 kg)
40°	2,000 lb (907 kg)	1,900 lb (862 kg)	1,800 lb (816 kg)	1,800 lb (816 kg)	1,600 lb (726 kg)	1,500 lb (680 kg)
30°	1,600 lb (726 kg)	1,500 lb (680 kg)	1,400 lb (635 kg)	1,400 lb (635 kg)	1,300 lb (590 kg)	1,300 lb (590 kg)
15°	1,300 lb (590 kg)	1,300 lb (590 kg)	—	1,100 lb (499 kg)	1,100 lb (499 kg)	—
0°	1,200 lb (544 kg)	—	—	1,000 lb (454 kg)	—	—

Shaded areas are governed by structural strength, do not rely on tipping.

WIRE ROPE: 9/16" diameter (1.43 cm) 6' x 19' (1.83 m x 5.79 m) EEIPS IWRC BRIGHT
Minimum required breaking strength = 37,000 lbs (16 783 kg)

REEVING CAPACITY

1 part: 9,000 lb (4082 kg)
2 part: 18,000 lb (8165 kg)

3340 General Specifications

STANDARD EQUIPMENT

Hydraulic boom operating radius (horizontal):
3340..... 3-section 11' 5.5" (3.49 m) to
 full proportional 30' 5.5" (9.28 m)

- 4-wheel steer
- 2-wheel drive
- 41.5 ft² (3.86 m²) carrydeck
- All steel cab structure less glass (top safety plate standard)
- Lights – head, tail, rear, work, stop and turn signals
- Outriggers – hydraulic telescoping box-front and rear
- Power steering – hydraulic, load sense
- 9/16" (14 mm) diameter 6 X 19 XXIPS wire rope
- Anti-two block cut-out for telescope, boom, and hoist
- Pivoting boom head
- 10.00 X 15 tires
- Cummins 4B 3.9 diesel engine

OPTIONAL EQUIPMENT

- Enclosed cab with windshield wiper
- Adjustable operator cushion seat with seat belt
- Independent outrigger control
- GM 3.0L gas/L.P. engine
- CE compliance

ACCESSORIES & ATTACHMENTS

- Cold start kit
- Flashing strobe light
- Rear hitch
- Front hitch
- 12' (3.66 m) offsettable boom extension
- 12'-18' (3.66 m-5.49 m) telescopic offsettable boom extension
- Heater and defroster
- Spare wheel & tire
- Engine shut-down gauges
- Overhaul ball
- LMI indicator system
- Recessed winch

GENERAL

Unit weight (approximate) 16,600 lb
 (7530 kg) less options/accessories
 Maximum boom angle 72°
 Outrigger pad size..... 6" X 7.8"
 (15 cm X 20 cm)

Pilot operated controls:

Swing system.... 360° continuous rotation
 Maximum system pressure 3650 psi

HYDRAULIC SYSTEM

Main pump:..... Variable displacement
 piston w/fixed displacement gear
 Maximum flow 28.5 gpm (107.9 Lpm)
 @ 2500 rpm

ENGINE

Make and model:..... Cummins 4B3.9
 diesel

Number of cylinders 4
 Horsepower 80 @ 2500 rpm
 Torque..... 201 lb-ft @ 1200 rpm

Optional engine:

Make and model:..... GM 3.0L dual fuel

Number of cylinders 4
 Horsepower 70 @ 2500 rpm
 Torque..... 163 lb-ft @ 1600 rpm

TRANSMISSION

Type 4-speed powershift
 Parking brake..... SAHR caliper disc

AXLES

Drive/steer front:

Type planetary
 Service brakes integrated wet disc

Rear:

Type..... steer only

ELECTRICAL

Starting..... 12 VDC
 Battery (1) 820 CCA @ 0°F (-18°C)
 Alternator 63 amp

TRAVEL SPEEDS

1st gear..... 4.0 mph (6.4 k/h)
 2nd gear 7.1 mph (11.4 k/h)
 3rd gear 12.7 mph (20.4 k/h)
 4th gear 22.6 mph (36.4 k/h)

TRACTIVE EFFORT

Unit equipped with 10.00 x 15 tires and
 no load.

1st gear 10,850 lb (4921 kg)
 2nd gear..... 5,925 lb (2688 kg)
 3rd gear..... 3,175 lb (1440 kg)
 4th gear..... 1,800 lb (816 kg)

TURNING SPECIFICATIONS

Turning radius: to c/l of outside tires
 2-wheel steer 14' 5" (4.39 m)
 4-wheel steer 8' 6" (2.59 m)

GRADEABILITY (calculated) (PAVED SURFACE)

1st gear, no load 63%
 1st gear, 12,000 lb (5443 kg) load ... 29%

CYLINDERS

	Cycle Time	
	1000 rpm	2500 rpm
Boom cylinder (full stroke):		
Up	15 sec.	11 sec.
Down	10 sec.	7 sec.
Telescope cylinder (full stroke):		
Out	53 sec.	29 sec.
In	21 sec.	21 sec.
Outriggers (simultaneous operation):		
Out	10 sec.	4 sec.
In	6 sec.	3 sec.
Down	15 sec.	6 sec.
Up	12 sec.	5 sec.
Hoist (winch):		
Line speed:	60 fpm	130 fpm
Swing speed:	2.0 rpm	2.0 rpm

NOTE: Gradeability is a measure of tractive effort only and does not represent grades on which the machine can operate.

NOTE: All specifications are stated in accordance with PCSA definition, ANSI B30.5 standards, or recommended practices where applicable.

IMPORTANT: Shuttlelift reserves the right to change specifications without notice and without incurring any obligation relating to such changes.