

Link-Belt® HC-258 lifting crane capacities — hammerhead boom

PCSA Class 12-1309
Refer to notes page 10.

Boom — tubular; 80" (2.03 m) wide, 68" (1.73 m) deep with 5' (1.52 m) long hammerhead top section, 1½" (38 mm) diameter boom pendants, boom live mast, and boom midpoint suspension pendants as required.

Jib — tubular; 32" (0.81 m) wide, 24" (0.61 m) deep.

Counterweights — Refer to charts below.

Mounting — rubber tire mobile base: FMC; 12 x 6 drive, 288" (7.32 m) wheelbase, 11' 10" (3.61 m) wide.

Counterweights					
"A" upper		"AB" upper		"A" bumper	
Pounds	kilograms	Pounds	kilograms	Pounds	kilograms
21,000	9 526	70,000	31 752	22,500	10 206

Hammerhead boom or boom + jib machine can lift off ground unassisted, without load. ①

Standard HC-258 must be equipped with the counterweight combinations below when the indicated boom or boom + jib lengths are used.	Minimum/maximum boom or boom + jib lengths allowed	On outriggers							
		Over rear				Over side			
		Boom		Boom + jib		Boom		Boom + jib	
		Feet	meters	Feet	meters	Feet	meters	Feet	meters
"A" upper and "A" bumper	Minimum	40	12.19	110 + 30	33.53 + 9.14	40	12.19	110 + 30	33.53 + 9.14
	Maximum	280	85.34	240 + 70	73.15 + 21.34	230	70.10	190 + 70	57.91 + 21.34
"AB" upper and "A" bumper	Minimum	Not applicable		260 + 30	79.25 + 9.14	Not applicable			
	Maximum	Not applicable		280 + 70	85.34 + 21.34	Not applicable			
"AB" upper and no bumper counterweight	Minimum	40	12.19	110 + 30	33.53 + 9.14	40	12.19	110 + 30	33.53 + 9.14
	Maximum	290	88.39	250 + 70	76.20 + 21.34	270	82.30	240 + 70	73.15 + 21.34

With "A" upper and "A" bumper counterweights up to 190' (57.91 m) of boom can be lifted on tires over rear. ②

Machine travel with hammerhead boom or boom + jib, with no load. ①

Standard HC-258 must be equipped with the counterweight combinations below when the indicated boom or boom + jib lengths are used.	Minimum/maximum boom or boom + jib lengths allowed	On tires ②							
		Jobsite moves at 1 m.p.h. (1.61 km/h) boom at 80° boom angle, upper facing rear only.				Over the road travel at 5 m.p.h. (8.05 km/h), with boom horizontal over rear and supported with standard suspension.			
		Boom		Boom + jib		Boom		Boom + jib	
		Feet	meters	Feet	meters	Feet	meters	Feet	meters
"A" upper and "A" bumper	Minimum	40	12.19	Not applicable		40	12.19	110 + 30	33.53 + 9.14
	Maximum	280	85.34	Not applicable		150	45.72	120 + 70	36.58 + 21.34
"AB" upper and "A" bumper	Minimum	Not applicable		260 + 30	79.25 + 9.14	40	12.19	110 + 30	33.53 + 9.14
	Maximum	Not applicable		280 + 70	85.34 + 21.34	160	48.77	130 + 70	39.62 + 21.34
"AB" upper and no bumper counterweight	Minimum	40	12.19	110 + 30	33.53 + 9.14	40	12.19	110 + 30	33.53 + 9.14
	Maximum	290	85.34	250 + 70	76.20 + 21.34	150	45.72	120 + 70	36.58 + 21.34

① Limited to 85% of available standability with machine standing level on firm supporting surface.

② Air pressure in front and rear tires to be 100 p.s.i. (690 kPa) at 1 m.p.h., and 95 p.s.i. (655 kPa) at 5 m.p.h.

Note: Hook block may be carried only when attached to carrier.

GENERAL INFORMATION ONLY

GENERAL INFORMATION ONLY

HC-258 lifting crane capacities — with hammerhead boom

PCSA Class 12-1309
Refer to notes Page 10.

Boom — Tubular; 80° (2.03 m) wide, 68" (1.73 m) deep with 5' (1.52 m) long hammerhead top section, 1½" (38 mm) diameter boom pendants, boom live mast, and boom midpoint suspension pendants as required.
Mounting — rubber tire mobile base; FMC 12 x 6 drive, 288" (7.32 m) wheelbase, 11' 10" (3.61 m) wide.
Counterweights — Refer to charts page 1.

Length	Boom				"A" upper & "A" bumper counterweights												"AB" upper & no bumper counterweights			
	Radius		Angle	Boom point height		On outriggers				On tires (static)				On outriggers only				Over side and 360° swing		
	Feet	meters		Feet	meters	Over rear	Over side	Over rear	Over side	Pounds	kilograms	Pounds	kilograms	Pounds	kilograms	Pounds	kilograms	Pounds	kilograms	
40' (12.19 m)	12	3.66	81.1	44.1	13.44	400.0	181.4	346.3	157.0	60.8	110.9	50.3	400.0	181.4	400.0	181.4	400.0	181.4	181.4	
	13	3.96	79.5	43.9	13.38	386.3	175.2	330.0	149.6	58.8	104.0	47.1	386.3	175.2	386.3	175.2	386.3	175.2	386.3	
	14	4.27	78.0	43.6	13.29	358.6	162.6	315.0	142.8	56.9	97.9	44.4	358.6	162.6	358.6	162.6	358.6	162.6	358.6	
	15	4.57	76.4	43.3	13.20	334.5	151.7	296.4	134.4	55.2	92.4	41.9	334.5	151.7	334.5	151.7	334.5	151.7	334.5	
	16	4.88	74.8	43.0	13.11	313.4	142.1	277.2	125.8	52.2	87.4	39.6	313.4	142.1	313.4	142.1	313.4	142.1	313.4	
	17	5.18	73.2	42.6	12.98	294.7	133.6	260.3	118.5	50.9	82.9	37.6	294.7	133.6	294.7	133.6	294.7	133.6	294.7	
	18	5.49	71.6	42.2	12.86	278.0	126.0	245.3	112.4	48.7	78.7	35.6	278.0	126.0	278.0	126.0	278.0	126.0	278.0	
	19	5.79	69.9	41.8	12.74	263.0	119.2	231.8	109.7	49.5	74.9	33.9	263.0	119.2	263.0	119.2	263.0	119.2	263.0	
	20	6.10	68.3	41.3	12.59	249.6	113.2	219.7	107.1	48.5	71.6	32.4	249.6	113.2	249.6	113.2	249.6	113.2	249.6	
	25	7.62	59.5	38.4	11.70	198.2	89.9	173.7	78.7	41.0	57.7	26.1	198.2	89.9	198.2	89.9	198.2	89.9	198.2	
	30	9.14	49.8	34.4	10.49	163.7	74.2	142.9	64.8	32.7	40.8	21.6	163.7	74.2	163.7	74.2	163.7	74.2	163.7	
	35	10.67	38.0	28.4	8.66	139.0	63.0	117.3	53.2	26.9	40.3	15.4	139.0	63.0	139.0	63.0	139.0	63.0	139.0	
	40	12.19	20.4	17.9	5.46	105.8	47.9	91.8	41.6	22.7	34.1	8.6	105.8	47.9	105.8	47.9	105.8	47.9	105.8	
	14	4.27	80.5	53.9	16.43	359.5	163.0	315.0	142.8	57.0	98.4	44.6	359.5	163.0	359.5	163.0	359.5	163.0	359.5	
15	4.57	79.3	53.6	16.34	335.3	152.0	297.2	134.8	55.3	92.8	42.0	335.3	152.0	335.3	152.0	335.3	152.0	335.3		
16	4.88	78.1	53.4	16.28	314.2	142.5	278.1	126.1	53.7	87.9	39.8	314.2	142.5	314.2	142.5	314.2	142.5	314.2		
17	5.18	76.8	53.1	16.18	295.5	134.0	261.1	118.4	52.3	83.3	37.7	295.5	134.0	295.5	134.0	295.5	134.0	295.5		
18	5.49	75.6	52.8	16.09	278.8	126.4	246.1	112.5	51.0	79.2	35.9	278.8	126.4	278.8	126.4	278.8	126.4	278.8		
19	5.79	74.3	52.5	16.00	263.8	119.6	232.6	109.8	49.8	75.4	34.2	263.8	119.6	263.8	119.6	263.8	119.6	263.8		
20	6.10	73.0	52.1	15.88	250.4	113.5	220.5	107.2	48.6	72.1	32.7	250.4	113.5	250.4	113.5	250.4	113.5	250.4		
25	7.62	66.5	50.0	15.24	198.9	90.2	174.4	79.1	41.3	58.2	26.3	198.9	90.2	198.9	90.2	198.9	90.2	198.9		
30	9.14	59.6	47.1	14.36	164.4	74.5	143.7	65.1	33.1	48.3	21.9	164.4	74.5	164.4	74.5	164.4	74.5	164.4		
35	10.67	52.1	43.3	13.20	139.7	63.3	118.8	53.8	27.3	40.8	15.9	139.7	63.3	139.7	63.3	139.7	63.3	139.7		
40	12.19	43.6	38.3	11.67	121.0	54.8	93.9	42.5	23.1	35.1	8.6	121.0	54.8	121.0	54.8	121.0	54.8	121.0		
50	15.24	17.7	19.2	5.85	86.8	39.3	62.2	20.9	17.2	25.1	6.7	86.8	39.3	86.8	39.3	86.8	39.3	86.8		
15	4.57	81.2	63.9	19.48	395.4	152.1	297.4	134.8	55.2	92.8	42.0	395.4	152.1	395.4	152.1	395.4	152.1	395.4		
16	4.88	80.2	63.7	19.42	371.3	142.5	278.3	126.2	53.6	87.8	39.8	371.3	142.5	371.3	142.5	371.3	142.5	371.3		
17	5.18	79.2	63.4	19.32	348.6	134.0	261.3	118.3	52.2	83.3	37.7	348.6	134.0	348.6	134.0	348.6	134.0	348.6		
18	5.49	78.1	63.2	19.26	326.5	126.5	246.3	112.2	50.8	79.2	35.9	326.5	126.5	326.5	126.5	326.5	126.5	326.5		
19	5.79	77.1	62.9	19.17	306.9	119.7	232.7	109.6	49.7	75.4	34.2	306.9	119.7	306.9	119.7	306.9	119.7	306.9		
20	6.10	76.1	62.6	19.08	290.5	113.6	220.7	106.9	48.4	72.1	32.7	290.5	113.6	290.5	113.6	290.5	113.6	290.5		
25	7.62	70.8	60.9	18.56	250.5	90.2	174.6	79.1	41.5	58.2	26.3	250.5	90.2	250.5	90.2	250.5	90.2	250.5		
30	9.14	65.4	58.7	17.89	199.0	74.6	143.8	65.2	33.2	48.3	21.9	199.0	74.6	199.0	74.6	199.0	74.6	199.0		
35	10.67	59.7	55.8	17.01	139.8	63.4	119.6	54.2	27.5	40.9	15.9	139.8	63.4	139.8	63.4	139.8	63.4	139.8		
40	12.19	53.6	52.2	15.91	121.1	54.9	95.1	43.1	23.2	35.2	8.6	121.1	54.9	121.1	54.9	121.1	54.9	121.1		
50	15.24	39.3	41.8	12.74	95.0	43.0	63.5	28.8	17.4	25.7	6.7	95.0	43.0	95.0	43.0	95.0	43.0	95.0		
60	18.29	15.8	20.4	6.22	72.6	32.9	46.2	20.9	13.6	19.1	4.8	72.6	32.9	72.6	32.9	72.6	32.9	72.6		
16	4.88	81.6	73.9	22.52	314.1	142.4	278.1	126.1	53.4	87.5	39.6	314.1	142.4	314.1	142.4	314.1	142.4	314.1		
17	5.18	80.8	73.7	22.46	295.5	134.0	261.1	118.4	52.0	83.0	37.7	295.5	134.0	295.5	134.0	295.5	134.0	295.5		
18	5.49	79.9	73.5	22.40	278.7	126.4	246.2	111.7	50.6	78.9	35.7	278.7	126.4	278.7	126.4	278.7	126.4	278.7		
19	5.79	79.0	73.2	22.31	263.7	119.6	232.6	109.1	49.4	75.1	34.0	263.7	119.6	263.7	119.6	263.7	119.6	263.7		
20	6.10	78.2	73.0	22.25	250.3	113.5	220.6	106.5	48.3	71.8	32.5	250.3	113.5	250.3	113.5	250.3	113.5	250.3		
25	7.62	73.8	71.5	21.79	198.9	90.2	174.5	79.1	41.5	58.0	26.3	198.9	90.2	198.9	90.2	198.9	90.2	198.9		
30	9.14	69.3	69.7	21.24	164.4	74.5	143.7	65.1	33.2	48.1	21.8	164.4	74.5	164.4	74.5	164.4	74.5	164.4		
35	10.67	64.6	67.3	20.51	139.7	63.3	120.0	54.4	27.5	40.7	15.9	139.7	63.3	139.7	63.3	139.7	63.3	139.7		
40	12.19	59.7	64.4	19.63	121.0	54.8	95.7	43.4	23.3	35.1	8.6	121.0	54.8	121.0	54.8	121.0	54.8	121.0		
50	15.24	49.1	56.7	17.28	94.9	43.0	64.0	29.0	17.5	25.8	6.7	94.9	43.0	94.9	43.0	94.9	43.0	94.9		
60	18.29	36.0	45.0	13.72	74.6	33.8	46.9	21.2	13.7	19.4	4.8	74.6	33.8	74.6	33.8	74.6	33.8	74.6		
70	21.34	14.3	21.5	6.55	59.9	27.1	36.0	16.3	10.9	14.8	3.9	59.9	27.1	59.9	27.1	59.9	27.1	59.9		

© Refer to page 9. Capacities shown in thousand pounds and thousand kilograms.

(continued)

GENERAL INFORMATION ONLY

HC-258 hammerhead boom										"A" upper & "A" bumper counterweights										"AB" upper & no bumper counterweights												
Length	Radius		Angle	Boom point Height		On outriggers		On tires (static)		On outriggers		On tires (static)		On outriggers		On tires (static)		On outriggers		On tires (static)												
	Feet	meters		Feet	meters	Pounds	kilograms	Pounds	kilograms	Pounds	kilograms	Pounds	kilograms	Pounds	kilograms	Pounds	kilograms	Pounds	kilograms	Pounds	kilograms											
80' (24.38 m)	18	5.49	81.2	83.6	25.48	278.4	126.2	245.9	111.2	50.4	78.5	35.6	323.8	146.8	302.8	137.3	19	5.79	81.6	83.6	25.48	278.4	126.2	245.9	111.2	50.4	78.5	35.6	323.8	146.8	302.8	137.3
	19	5.79	80.5	83.5	25.45	263.4	119.3	232.3	108.5	49.2	74.7	33.8	296.4	138.9	288.2	130.7	20	6.10	79.7	83.2	25.36	250.0	113.3	220.3	105.9	48.0	71.4	32.3	290.9	131.9	274.8	124.6
	20	6.10	79.7	83.2	25.36	250.0	113.3	220.3	105.9	48.0	71.4	32.3	290.9	131.9	274.8	124.6	21	6.41	78.9	82.7	25.27	237.3	109.9	208.3	104.5	47.1	70.6	31.7	278.3	125.6	222.6	100.9
	25	7.62	75.9	82.0	24.99	198.5	90.0	174.2	91.5	41.5	57.6	26.1	222.6	100.9	222.6	100.9	22	7.93	72.1	80.4	24.99	185.5	84.2	163.5	79.0	45.5	64.4	30.5	217.4	98.3	217.4	98.3
	30	9.14	72.1	80.4	24.99	164.1	74.2	143.5	73.3	33.2	47.7	21.6	179.4	81.3	179.4	81.3	23	10.67	68.1	78.4	23.90	139.4	63.2	120.2	65.0	40.4	56.8	25.3	148.4	67.3	148.4	67.3
	35	10.67	68.1	78.4	23.90	139.4	63.2	120.2	65.0	40.4	56.8	25.3	148.4	67.3	148.4	67.3	36	12.19	64.0	76.0	23.16	120.8	54.7	96.2	43.6	34.8	15.7	125.3	56.8	125.3	56.8	
	40	12.19	64.0	76.0	23.16	120.8	54.7	96.2	43.6	34.8	15.7	125.3	56.8	125.3	56.8	41	15.24	55.3	69.7	21.24	94.7	42.9	38.4	25.8	11.7	95.4	43.2	73.2	33.2	73.2	33.2	
	50	15.24	55.3	60.9	18.56	74.3	33.7	33.7	33.7	15.7	11.7	9.5	74.3	33.7	33.7	51	18.29	51.8	64.7	19.72	30.4	17.6	11.0	15.1	8.8	67.0	30.3	59.2	26.8	59.2	26.8	
	60	18.29	51.8	60.9	18.56	74.3	33.7	33.7	33.7	15.7	11.7	9.5	74.3	33.7	33.7	62	21.34	42.6	64.7	19.72	30.4	17.6	11.0	15.1	8.8	67.0	30.3	59.2	26.8	59.2	26.8	
	70	21.34	42.6	50.6	15.42	50.1	22.7	22.7	22.7	9.0	9.0	6.7	55.6	25.2	25.2	73	24.38	31.3	50.6	15.42	50.1	22.7	22.7	9.0	9.0	6.7	55.6	25.2	25.2	25.2	25.2	
80	24.38	31.3	50.6	15.42	50.1	22.7	22.7	22.7	9.0	9.0	6.7	55.6	25.2	25.2	84	27.43	12.3	42.2	7.13	16.3	7.3	4.0	47.0	21.3	41.2	18.6	16.6	16.6	16.6			
90	27.43	12.3	23.4	7.13	42.2	19.1	19.1	19.1	6.0	6.0	4.7	32.0	14.5	14.5	85	30.48	10.4	36.1	5.22	10.2	4.6	3.0	30.9	12.5	12.5	9.5	48.9	22.1	41.2	18.6		
100	30.48	10.4	23.4	7.13	42.2	19.1	19.1	19.1	6.0	6.0	4.7	32.0	14.5	14.5	101	33.53	11.0	36.1	5.22	10.2	4.6	3.0	30.9	12.5	12.5	9.5	48.9	22.1	41.2	18.6		
110	33.53	11.0	25.2	7.68	32.6	14.7	14.7	14.7	5.5	5.5	4.1	28.8	13.1	13.1	112	36.58	10.4	36.1	5.22	10.2	4.6	3.0	30.9	12.5	12.5	9.5	48.9	22.1	41.2	18.6		
120	36.58	10.4	26.0	7.92	28.5	12.9	12.9	12.9	4.6	4.6	3.3	24.8	10.2	10.2	113	39.63	11.0	36.1	5.22	10.2	4.6	3.0	30.9	12.5	12.5	9.5	48.9	22.1	41.2	18.6		
25	7.62	81.3	123.2	37.55	207.9	94.3	182.8	82.9	96.6	60.5	27.4	27.4	228.9	103.8	228.9	103.8	26	7.93	80.8	123.0	37.49	199.2	90.3	175.0	82.9	60.5	27.4	27.4	228.9	103.8	228.9	103.8
30	9.14	78.3	122.0	37.19	164.7	74.7	144.7	65.6	74.5	48.7	22.0	22.0	191.0	86.6	191.0	86.6	27	8.45	77.9	120.7	36.79	140.1	63.5	122.0	65.6	40.8	18.5	159.1	159.1	159.1	159.1	
35	10.67	75.8	120.7	36.79	140.1	63.5	122.0	55.3	61.5	40.8	18.5	18.5	136.7	62.0	136.7	62.0	36	12.19	73.3	119.2	36.33	121.3	55.0	99.0	44.9	35.3	16.0	136.7	62.0	136.7	62.0	
40	12.19	73.3	119.2	36.33	121.3	55.0	99.0	44.9	52.1	35.3	16.0	16.0	105.2	47.7	105.2	47.7	37	15.24	68.1	115.5	35.20	94.6	34.2	66.4	30.1	20.3	74.3	74.3	74.3	74.3		
50	15.24	68.1	115.5	35.20	94.6	34.2	66.4	30.1	31.0	20.3	7.1	7.1	83.1	37.6	83.1	37.6	38	18.29	62.7	110.6	33.71	75.6	27.8	37.9	22.1	15.8	60.1	60.1	60.1	60.1		
60	18.29	62.7	110.6	33.71	75.6	27.8	37.9	22.1	25.0	15.8	7.1	7.1	67.8	30.7	67.8	30.7	39	21.34	57.0	104.5	31.85	61.3	23.0	30.6	13.8	12.5	25.6	25.6	25.6	25.6		
70	21.34	57.0	104.5	31.85	61.3	23.0	30.6	13.8	20.6	12.5	5.6	5.6	56.5	25.6	56.5	25.6	40	24.38	50.8	96.9	29.54	43.2	19.5	25.1	11.3	9.9	42.3	42.3	42.3	42.3		
80	24.38	50.8	96.9	29.54	43.2	19.5	25.1	11.3	14.4	9.9	3.5	3.5	41.5	18.6	41.5	18.6	41	27.43	46.4	87.3	26.61	37.2	16.8	17.6	7.9	6.2	36.5	36.5	36.5	36.5		
90	27.43	46.4	87.3	26.61	37.2	16.8	17.6	7.9	10.2	6.2	2.8	2.8	32.0	14.5	32.0	14.5	42	30.48	36.4	75.0	22.86	32.5	14.7	17.6	7.9	6.2	31.8	31.8	31.8	31.8		
100	30.48	36.4	75.0	22.86	32.5	14.7	17.6	7.9	10.2	6.2	2.8	2.8	32.0	14.5	32.0	14.5	43	33.53	31.8	68.8	16.95	37.4	16.9	21.0	8.1	6.3	31.8	31.8	31.8	31.8		
110	33.53	31.8	68.8	16.95	37.4	16.9	21.0	8.1	12.3	6.3	2.8	2.8	32.0	14.5	32.0	14.5	44	36.58	28.8	55.6	16.95	37.4	16.9	21.0	8.1	6.3	31.8	31.8	31.8	31.8		
120	36.58	28.8	55.6	16.95	37.4	16.9	21.0	8.1	12.3	6.3	2.8	2.8	32.0	14.5	32.0	14.5	45	39.63	27.4	52.2	16.95	37.4	16.9	21.0	8.1	6.3	31.8	31.8	31.8	31.8		

Refer to page 9. Capacities shown in thousand pounds and thousand kilograms.

HC-258 hammerhead boom				On outriggers						On tires (static)						"AB" upper & no bumper counterweights					
Length	Radius		Boom point Height	Over rear		Over side and 360° swing		Over rear		Over side		Over rear		Over side and 360° swing							
	Feet	meters		Feet	meters	Pounds	kilograms	Pounds	kilograms	Pounds	kilograms	Pounds	kilograms	Pounds	kilograms						
130' (39.62 m)	25	7.62	133.2	40.60	198.7	90.1	174.5	79.1	41.9	57.5	26.0	221.5	100.4	221.5	100.4						
	30	9.14	132.2	40.29	164.0	74.3	143.7	65.1	33.4	47.6	21.5	189.1	85.7	186.1	84.4						
	35	10.67	129.1	39.96	139.6	63.3	121.5	55.1	27.4	40.2	18.2	157.4	71.3	157.4	71.3						
	40	12.19	127.7	39.53	120.8	54.7	98.9	44.8	23.4	34.8	15.7	133.7	61.3	133.7	60.6						
	50	15.24	126.3	38.50	94.1	42.6	66.3	30.0	17.5	26.4	11.9	104.0	47.1	96.1	43.5						
	60	18.29	121.9	37.16	75.2	34.1	48.7	22.0	13.8	20.0	9.0	82.1	37.2	74.1	33.6						
	70	21.34	116.4	35.48	61.1	27.7	37.7	17.1	11.2	15.5	7.0	67.6	30.6	59.8	27.1						
	80	24.38	109.7	32.52	50.7	22.9	30.4	13.7	9.2	12.1	5.4	56.2	25.4	49.6	22.4						
	90	27.43	101.4	30.91	42.9	19.4	24.9	11.2	7.6	9.6	4.3	47.8	21.6	42.0	19.0						
	100	30.48	91.2	27.80	36.9	16.7	20.7	9.3	6.3	7.6	3.4	41.2	18.6	36.3	16.4						
	110	33.53	78.1	23.80	32.3	14.6	17.4	7.8	5.3	5.9	2.6	36.1	16.3	31.6	14.3						
	120	36.58	60.1	18.32	28.3	12.8	14.7	6.6	4.5	4.5	2.0	31.8	14.4	27.7	12.5						
	130	39.62	46.8	8.17	25.0	11.3	12.4	5.6	3.7	3.2	1.4	28.0	12.7	24.4	11.0						
	140' (42.67 m)	27	8.23	143.0	43.59	183.0	83.0	160.2	72.6	37.9	52.6	23.8	210.0	95.2	205.8	93.3					
30		9.14	142.4	43.40	163.6	74.2	143.2	64.9	33.3	47.1	21.3	187.4	85.0	185.5	84.1						
35		10.67	141.4	43.10	139.0	63.0	121.0	54.8	27.5	39.7	18.0	155.9	70.7	155.9	70.7						
40		12.19	140.1	42.70	120.3	54.5	98.8	44.8	23.5	34.2	15.5	133.8	60.6	133.5	60.5						
50		15.24	136.9	41.73	93.7	42.5	66.2	30.0	17.4	25.9	11.7	102.8	46.6	95.9	43.4						
60		18.29	132.9	38.98	74.7	33.8	48.5	21.9	13.7	19.6	8.8	81.1	36.7	73.8	33.4						
70		21.34	127.9	37.16	60.8	27.5	37.5	17.0	11.8	15.1	6.8	67.3	30.5	59.5	26.9						
80		24.38	121.9	34.93	50.4	22.8	30.2	13.6	9.0	11.8	5.3	55.9	25.3	49.3	22.3						
90		27.43	114.6	32.22	42.6	19.3	24.7	11.2	7.4	9.2	4.1	47.5	21.5	41.7	18.9						
100		30.48	105.7	28.90	36.8	16.6	20.5	9.2	6.2	8.2	3.2	40.9	18.5	36.0	16.3						
110		33.53	94.8	24.72	32.0	14.5	17.2	7.8	5.2	5.6	2.5	35.9	16.2	31.3	14.1						
120		36.58	81.1	18.99	28.1	12.7	14.5	6.5	4.3	4.2	1.9	31.6	14.3	27.4	12.4						
130		39.62	62.3	8.38	24.8	11.2	12.3	5.5	3.6	3.0	1.3	28.0	12.7	24.2	10.9						
140		42.67	46.0	8.38	21.9	9.9	10.3	4.6	2.9	3.0	—	24.4	11.0	21.4	9.7						
150' (45.72 m)	28	8.53	152.9	46.60	174.2	79.0	153.6	69.6	36.1	50.3	22.8	174.2	79.0	174.2	79.0						
	30	9.14	152.6	46.42	163.2	74.0	142.8	64.7	33.3	46.7	21.3	171.9	77.9	171.9	77.9						
	35	10.67	151.6	46.21	138.6	62.8	120.6	54.7	27.4	39.3	17.8	154.7	70.1	154.7	70.1						
	40	12.19	150.4	45.84	119.9	54.3	98.7	44.7	23.1	33.9	15.3	132.7	60.1	132.7	60.1						
	50	15.24	147.5	44.96	93.4	42.3	66.2	30.0	17.3	25.5	11.5	101.9	46.2	95.7	43.4						
	60	18.29	143.8	43.83	74.4	33.7	48.4	21.9	13.6	19.4	8.7	80.3	36.4	73.6	33.3						
	70	21.34	139.2	42.43	60.6	27.4	37.0	16.9	10.9	14.9	6.7	67.1	30.4	59.4	26.9						
	80	24.38	133.7	40.75	50.2	22.7	30.0	13.6	8.8	11.6	5.2	55.7	25.2	49.1	22.2						
	90	27.43	127.1	38.74	42.4	19.2	24.5	11.1	7.3	9.0	4.0	47.2	21.4	41.5	18.8						
	100	30.48	119.3	36.36	36.6	16.6	20.3	9.2	6.1	8.5	3.1	40.7	18.4	35.8	16.4						
	110	33.53	109.8	33.47	31.8	14.4	17.0	7.7	5.1	5.3	2.4	35.7	16.1	31.1	14.1						
	120	36.58	98.4	29.99	27.9	12.6	14.3	6.4	4.2	4.0	1.8	31.4	14.2	27.2	12.3						
	130	39.62	83.9	25.57	24.6	11.1	12.1	5.4	3.5	3.5	—	24.8	12.6	24.0	10.8						
	140	42.67	64.3	19.60	21.9	9.9	10.2	4.6	2.9	2.9	—	24.8	11.2	21.3	9.6						
150	45.72	46.0	8.60	19.4	8.7	8.6	3.9	2.3	2.3	—	21.3	9.6	18.9	8.5							
160' (48.77 m)	29	8.84	162.9	49.65	162.2	73.5	147.8	67.0	34.5	48.0	21.7	162.2	73.5	162.2	73.5						
	30	9.14	162.7	49.59	161.2	73.1	142.4	64.5	33.2	46.2	20.9	161.2	73.1	161.2	73.1						
	35	10.67	161.8	49.32	138.2	62.6	120.2	54.5	27.3	38.8	17.5	153.5	69.6	153.5	69.6						
	40	12.19	160.7	48.98	119.5	54.2	98.6	44.7	23.0	33.5	15.1	131.7	59.7	131.7	59.7						
	50	15.24	158.0	48.16	93.1	42.2	66.2	30.0	17.1	25.1	11.3	101.1	45.8	95.6	43.3						
	60	18.29	154.6	47.12	74.2	33.6	48.3	21.9	13.5	19.2	8.7	79.5	36.0	73.4	33.2						
	70	21.34	150.3	45.81	60.4	27.3	37.2	16.8	10.7	14.6	6.6	66.9	30.3	59.2	26.8						
	80	24.38	145.3	44.29	50.0	22.6	29.9	13.5	8.7	11.3	5.1	55.5	25.1	48.9	22.1						
	90	27.43	139.3	42.46	42.2	19.1	24.4	11.0	7.2	8.8	3.9	47.0	21.3	41.2	18.6						
	100	30.48	132.1	40.26	36.4	16.5	20.1	9.1	5.9	6.7	3.0	40.5	18.3	35.6	16.1						
	110	33.53	123.8	37.73	31.6	14.3	16.8	7.6	4.9	5.1	2.3	35.5	16.1	30.9	14.0						
	120	36.58	113.8	34.69	27.7	12.5	14.2	6.4	4.1	3.7	1.6	31.2	14.1	27.0	12.2						
	130	39.62	101.7	31.00	24.4	11.0	12.0	5.4	3.4	3.7	—	27.6	12.5	23.8	10.7						
	140	42.67	86.7	26.43	21.7	9.8	10.1	4.8	2.8	—	—	24.6	11.1	21.1	9.5						
150	45.72	66.3	20.21	19.3	8.5	8.5	3.8	2.3	—	—	21.7	9.8	18.8	8.5							
160	48.77	48.0	8.81	17.2	7.8	7.0	3.1	1.8	—	—	18.7	8.4	16.7	7.5							

© Refer to page 9. Capacities shown in thousand pounds and thousand kilograms.

(continued)

GENERAL INFORMATION ONLY

HC-258 hammerhead boom				"A" upper & "A" bumper counterweights				"AB" upper & no bumper counterweights									
Length	Radius		Angle Degrees	Boom point Height ⁽¹⁾		On outriggers				On tires (static)							
	Feet	meters		Feet	meters	Over rear		Over side and 360° swing ⁽²⁾		Over rear		Over side		Over rear		Over side and 360° swing ⁽²⁾	
					Pounds	kilograms	Pounds	kilograms	Pounds	kilograms	Pounds	kilograms	Pounds	kilograms	Pounds	kilograms	
170' (51.82 m)	31	9.45	81.5	172.7	52.64	149.9*	67.9*	137.0*	62.1*	70.1	31.7	44.2*	20.0*	149.9*	67.9*	149.9*	67.9*
	35	10.67	80.1	171.0	52.43	137.8*	62.5*	119.8*	54.3*	60.1	27.2	38.4*	17.4*	145.8*	66.1*	145.8*	66.1*
	40	12.19	78.3	171.0	52.12	119.0*	53.9*	98.5	44.6	50.6	22.9	33.1*	15.0*	130.7*	59.2*	130.7*	59.2*
	50	15.24	74.8	168.4	51.33	92.7*	42.0*	66.1	29.9	37.6	17.0	24.7*	11.2*	100.2*	45.4*	95.4	43.2
	60	18.29	71.2	165.2	50.35	74.1*	33.6*	48.2	21.8	29.5	13.3	18.9	8.5	78.8*	35.7*	73.2	33.2
	70	21.34	67.6	161.3	49.16	60.2	27.3	37.0	16.7	23.5	10.6	14.4	6.5	66.3*	30.0*	58.9	26.7
	80	24.38	63.8	156.6	47.73	49.7	22.5	29.7	13.4	19.1	8.6	11.0	4.8	55.1*	24.9*	48.6	22.0
	90	27.43	59.9	151.0	46.02	41.9	19.0	24.2	10.9	15.7	7.1	8.5	3.8	46.7*	21.1*	41.0	18.5
	100	30.48	55.8	144.6	44.07	36.2	16.4	20.0	9.0	13.0	5.8	6.5	2.9	40.1*	18.1*	35.4	16.0
	110	33.53	51.5	137.0	41.76	31.4	14.2	16.6	7.5	10.7	4.8	4.8	2.1	35.2	15.9	30.6	13.8
	120	36.58	47.0	128.1	39.04	27.5	12.4	14.0	6.3	8.9	4.0	3.4	1.5	31.0	14.0	26.8	12.1
	130	39.62	42.0	117.6	35.84	24.2	10.9	11.7	5.3	7.3	3.3	—	—	27.4	12.4	23.6	10.7
	140	42.67	36.5	105.0	32.00	21.5	9.7	9.9	4.4	6.0	2.7	—	—	24.4	11.0	20.9	9.4
	150	45.72	30.2	89.3	27.22	19.1	8.6	8.3	3.7	4.8	2.1	—	—	21.5	9.7	18.6	8.4
	160	48.77	22.2	68.2	20.79	17.0	7.7	6.9	3.1	3.8	1.7	—	—	18.9	8.5	16.5	7.4
	170	51.82	8.6	29.6	9.02	15.2	6.8	5.7	2.5	—	—	—	—	16.3	7.3	14.7	6.6
	180' (54.86 m)	32	9.75	81.6	182.7	55.69	138.5*	62.8*	131.9*	59.8*	67.0	30.3	42.2*	19.1*	138.5*	62.8*	138.5*
35		10.67	80.7	182.2	55.53	119.4*	61.7*	119.4*	54.1*	59.8	27.1	38.0*	17.2*	136.2*	61.7*	136.2*	61.7*
40		12.19	79.0	181.2	55.23	98.3	53.7*	98.3	44.5	50.3	22.8	32.7*	14.8*	129.8*	58.8*	129.8*	58.8*
50		15.24	75.7	178.8	54.50	66.0	41.9*	66.0	29.9	37.3	16.9	24.3*	11.0*	99.4*	45.0*	95.2	43.1
60		18.29	72.3	175.8	53.58	48.1*	33.4*	48.1*	21.8	29.2	13.2	18.6*	8.4*	78.1*	35.4*	73.3	33.2
70		21.34	68.9	172.1	52.46	60.0	27.2	36.9	16.7	23.2	10.5	14.1	6.3	65.7*	29.8*	58.7	26.6
80		24.38	65.4	167.7	51.11	49.5	22.4	29.5	13.3	18.8	8.5	10.8	4.8	54.5*	24.7*	48.4	21.9
90		27.43	61.8	162.6	49.56	41.7	18.9	24.0	10.8	15.4	6.9	8.2	3.7	46.2*	20.9*	40.7	18.4
100		30.48	58.0	156.6	47.73	36.0	16.3	19.7	8.9	12.7	5.7	6.2	2.8	39.6*	17.9*	35.1	15.9
110		33.53	54.1	149.7	45.63	31.1	14.1	16.4	7.4	10.4	4.7	4.5	2.0	35.0	15.8	30.4	13.7
120		36.58	50.0	141.6	43.16	27.2	12.3	13.7	6.2	8.6	3.9	3.2	1.4	30.7	13.9	26.5	12.0
130		39.62	45.5	132.3	40.33	24.0	10.8	11.5	5.2	7.0	2.5	—	—	27.2	12.3	23.3	10.5
140		42.67	40.8	121.3	36.97	21.2	9.6	9.7	4.3	5.7	2.5	—	—	24.2	10.9	20.6	9.3
150		45.72	35.4	108.2	32.98	18.8	8.5	8.1	3.6	4.5	2.0	—	—	21.3	9.6	18.3	8.3
160		48.77	29.3	91.9	28.01	16.8	7.6	6.7	3.0	3.5	1.5	—	—	18.7	8.4	16.3	7.3
170		51.82	21.5	70.0	21.34	15.0	6.8	5.5	2.4	2.4	—	—	—	16.4	7.4	14.5	6.5
180		54.86	8.3	30.2	9.20	13.4	6.0	4.4	1.9	—	—	—	—	14.2	6.4	12.9	5.8
190' (57.91 m)	34	10.36	81.5	192.5	58.67	127.9*	58.0*	122.9*	55.7*	61.8	28.0	38.8*	17.5*	127.9*	58.0*	127.9*	58.0*
	35	10.67	81.2	192.3	58.61	127.2*	57.6*	119.0*	53.9*	59.5	26.9	37.5*	17.0*	127.2*	57.6*	127.2*	57.6*
	40	12.19	79.6	191.4	58.34	118.2*	53.6*	98.2*	44.5*	50.0	22.6	32.2*	14.6*	124.1*	56.2*	124.1*	56.2*
	50	15.24	76.5	189.1	57.64	92.0*	41.7*	65.9	29.8	37.0	16.7	23.9*	10.8*	98.7*	44.7*	95.0	43.0
	60	18.29	73.3	186.3	56.78	73.4*	33.2*	47.9	21.7	28.9	13.1	18.2*	8.2*	77.4*	35.1*	73.1	33.1
	70	21.34	70.1	182.9	55.75	59.7	27.0	36.7	16.6	22.9	10.3	13.8	6.2	65.0*	29.4*	58.5	26.5
	80	24.38	66.8	178.7	54.47	49.2	22.3	29.2	13.2	18.5	8.3	10.5	4.7	54.0*	24.4*	48.1	21.8
	90	27.43	63.4	173.9	53.00	41.4	18.7	23.8	10.7	15.1	6.8	7.9	3.5	45.6*	20.6*	40.5	18.3
	100	30.48	59.9	168.4	51.33	35.7	16.1	19.5	8.8	12.4	5.6	5.9	2.6	39.1*	17.7*	34.9	15.8
	110	33.53	56.3	162.0	49.38	30.9	14.0	16.2	7.3	10.1	4.5	4.2	1.9	34.7*	15.7*	30.1	13.6
	120	36.58	52.5	154.6	47.12	27.0	12.2	13.5	6.1	8.3	3.7	—	—	30.5*	13.8*	26.3	11.9
	130	39.62	48.5	146.1	44.53	23.7	10.7	11.3	5.1	6.7	3.0	—	—	26.9*	12.2*	23.1	10.4
	140	42.67	44.2	136.3	41.54	20.9	9.4	9.4	4.2	5.4	2.4	—	—	23.8*	10.7*	20.4	9.2
	150	45.72	39.6	124.9	38.07	18.6	8.4	7.8	3.5	4.2	1.9	—	—	20.9*	9.4*	18.0	8.1
	160	48.77	34.4	111.2	33.89	16.5	7.4	6.5	2.9	3.2	—	—	—	18.5*	8.3*	16.0	7.2
	170	51.82	28.5	94.4	28.77	14.7	6.6	5.3	2.4	—	—	—	—	16.2*	7.3*	14.3	6.4
	180	54.86	20.9	71.9	21.92	13.1	5.9	4.2	1.9	—	—	—	—	14.2*	6.4*	12.7	5.7
190	57.91	8.0	30.9	9.42	11.7	5.3	3.2	1.4	—	—	—	—	12.2*	5.5*	11.3	5.1	
200' (60.96 m)	35	10.67	81.6	202.5	61.72	117.7*	53.3*	117.7*	53.3*	—	—	—	—	117.7*	53.3*	117.7*	53.3*
	40	12.19	80.1	201.6	61.45	98.0	52.5*	98.0	44.4	—	—	—	—	115.8*	52.5*	115.8*	52.5*
	50	15.24	77.2	199.5	60.81	91.6*	41.5*	65.8	29.8	—	—	—	—	97.9*	44.4*	94.8	43.0
	60	18.29	74.2	196.8	59.98	73.0*	33.1*	47.7	21.6	—	—	—	—	76.7*	34.7*	72.8	33.0
	70	21.34	71.1	193.5	58.98	59.5	26.9	36.5	16.5	—	—	—	—	64.4*	29.2*	58.2	26.3
	80	24.38	68.0	189.6	57.79	48.9	22.1	29.1	13.1	—	—	—	—	53.4*	24.2*	47.9	21.7
90	27.43	64.9	185.1	56.42	41.1	18.6	23.5	10.6	—	—	—	—	45.1*	20.4*	40.2	18.2	

⁽¹⁾Refer to name g. Capacities shown in thousand pounds and thousand kilograms

HC-258 hammerhead boom				"A" upper & "A" bumper counterweights						"AB" upper & no bumper counterweights					
Length	Radius		Boom point height	On outriggers			On tires (static)			On outriggers only					
	Feet	meters		Angle	Feet	meters	Over rear	Over side and 360° swing	Over rear	Over side	Over rear	Over side and 360° swing			
			Degrees			Pounds	kilograms	Pounds	kilograms	Pounds	kilograms	Pounds	kilograms		
200' (60.96 m)	100	30.48	61.6	179.9	54.85	35.4	16.0	19.3	8.7	38.6*	17.5*	34.6	15.6		
	110	33.53	58.2	173.9	53.00	30.6	13.8	15.9	7.2	34.5*	15.6*	29.9	13.5		
	120	36.58	54.7	167.1	50.93	26.7	12.1	13.2	5.9	30.2*	13.6*	26.0	11.7		
	130	39.62	51.0	159.4	48.59	23.4	10.6	11.0	4.9	26.6*	12.0*	22.8	10.3		
	140	42.67	47.2	150.5	45.87	20.7	9.3	9.2	4.1	23.4*	10.6*	20.1	9.1		
	150	45.72	43.0	140.3	42.76	18.3	8.3	7.6	3.4	20.6*	9.3*	17.8	8.0		
	160	48.77	38.5	128.4	39.11	16.3	7.3	6.5	2.9	18.1*	8.2*	15.8	7.1		
	170	51.82	33.5	114.2	34.81	14.5	6.5	5.0	2.2	16.0*	7.2*	14.0	6.3		
	180	54.86	27.7	96.8	29.50	12.9	5.8	4.0	1.8	14.0*	6.3*	12.5	5.6		
	190	57.91	20.4	73.6	22.43	11.5	5.2	3.0	1.3	12.2*	5.5*	11.1	5.0		
	200	60.96	7.8	31.5	9.60	10.2	4.6	—	—	10.4*	4.7*	9.8	4.4		
	210' (64.01 m)	37	11.29	81.5	212.3	64.71	102.7*	46.5*	102.7*	46.5*	102.7*	46.5*	102.7*	46.5*	
		40	12.19	80.6	211.8	64.56	101.9*	46.2*	97.9	44.4	101.9*	46.2*	101.9*	46.2*	
		50	15.24	77.8	209.7	63.92	91.2*	41.3*	65.7	29.8	97.2*	44.0*	94.5	42.8	
		60	18.29	75.0	207.2	63.15	72.6*	32.9*	47.6	21.5	76.1*	34.5*	72.6	32.9	
		70	21.34	72.1	204.1	62.21	59.2	26.8	36.2	16.4	63.8*	28.9*	57.9	26.2	
		80	24.38	69.1	200.4	61.08	48.7	22.0	28.9	13.1	52.8*	23.9*	47.6	21.5	
		90	27.43	66.1	196.2	59.80	40.8	18.5	23.3	10.5	44.5*	20.1*	39.9	18.0	
		100	30.48	63.1	191.3	58.31	35.2	15.9	19.0	8.6	38.1*	17.2*	34.3	15.5	
		110	33.53	59.9	185.7	56.60	30.3	13.7	15.7	7.1	34.2*	15.5*	29.6	13.4	
120		36.58	56.7	179.3	54.65	26.4	11.9	13.0	5.8	29.9*	13.5*	25.7	11.6		
130		39.62	53.3	172.1	52.46	23.1	10.4	10.8	4.8	26.3*	11.9*	22.5	10.2		
140		42.67	49.7	164.0	49.99	20.4	9.2	8.9	4.0	23.0*	10.4*	19.8	8.9		
150		45.72	45.9	154.7	47.15	18.0	8.1	7.3	3.3	20.2*	9.1*	17.5	7.9		
160		48.77	41.9	144.1	43.92	16.0	7.2	5.9	2.6	17.7*	8.0*	15.5	7.0		
170		51.82	37.5	131.7	40.14	14.2	6.4	4.7	2.1	15.6*	7.0*	13.7	6.2		
180		54.86	32.7	117.1	35.69	12.6	5.7	3.7	1.6	13.7*	6.2*	12.2	5.5		
190		57.91	27.0	99.2	30.24	11.2	5.0	—	—	12.0*	5.4*	10.8	4.8		
200		60.96	19.8	75.3	22.95	9.9	4.4	—	—	10.4*	4.7*	9.5	4.3		
210		64.01	7.6	32.1	9.78	8.8	3.9	—	—	8.8*	3.9*	8.4	3.8		
220' (67.06 m)		38	11.58	81.6	222.2	67.73	92.4*	41.9*	92.4*	41.9*	92.4*	41.9*	92.4*	41.9*	
	40	12.19	81.1	221.9	67.64	91.7*	41.5*	91.7*	41.5*	91.7*	41.5*	91.7*	41.5*		
	50	15.24	78.4	220.0	67.06	89.6*	40.6*	65.6	29.7	89.6*	40.6*	89.6*	40.6*		
	60	18.29	75.7	217.5	66.29	72.3*	32.7*	47.4	21.5	75.5*	34.2*	72.3	32.7		
	70	21.34	72.9	214.6	65.41	58.9	26.7	36.5	16.5	63.2*	28.6*	57.7	26.1		
	80	24.38	70.1	211.1	64.34	48.4	21.9	28.7	13.0	52.3*	23.7*	47.3	21.4		
	90	27.43	67.3	207.1	63.12	40.5	18.3	23.1	10.4	44.0*	19.9*	39.6	17.9		
	100	30.48	64.4	202.5	61.72	34.9	15.8	18.8	8.5	37.6*	17.0*	34.0	15.4		
	110	33.53	61.4	197.2	60.11	30.0	13.6	15.4	6.9	33.9*	15.3*	29.3	13.2		
	120	36.58	58.4	191.3	58.31	26.1	11.8	12.7	5.7	29.6*	13.4*	25.4	11.5		
	130	39.62	55.2	184.6	56.27	22.8	10.3	10.5	4.7	25.8*	11.7*	22.2	10.0		
	140	42.67	51.9	177.0	53.95	20.1	9.1	8.6	3.9	22.5*	10.2*	19.5	8.8		
	150	45.72	48.5	168.5	51.36	17.7	8.0	7.0	3.1	19.7*	8.9*	17.2	7.8		
	160	48.77	44.8	158.8	48.40	15.7	7.1	5.7	2.5	17.3*	7.8*	15.2	6.8		
	170	51.82	40.9	147.8	45.05	13.9	6.3	4.2	1.9	15.2*	6.8*	13.4	6.0		
	180	54.86	36.6	135.0	41.15	12.3	5.5	3.4	1.5	13.4*	6.0*	11.9	5.3		
	190	57.91	31.9	120.0	36.58	10.9	4.9	—	—	11.7*	5.3*	10.5	4.7		
	200	60.96	26.3	101.5	30.94	9.6	4.3	—	—	10.2*	4.6*	9.3	4.2		
	210	64.01	19.4	77.0	23.47	8.5	3.8	—	—	8.7*	3.9*	8.1	3.6		
	220	67.06	7.4	32.7	9.97	7.5	3.4	—	—	7.3*	3.3*	7.1	3.2		
230' (70.10 m)	40	12.19	81.5	232.0	70.71	83.1*	37.6*	83.1*	37.6*	83.1*	37.6*	83.1*	37.6*		
	50	15.24	78.9	230.2	70.16	81.1*	36.7*	65.5	29.7	81.1*	36.7*	81.1*	36.7*		
	60	18.29	76.3	227.9	69.46	71.9*	32.6*	47.2	21.4	74.9*	33.9*	72.1	32.7		
	70	21.34	73.7	225.1	68.61	58.6*	26.5*	36.3	16.4	62.7*	28.4*	57.4	26.0		
	80	24.38	71.1	221.8	67.60	48.1	21.8	28.5	12.9	51.7*	23.4*	47.0	21.3		
	90	27.43	68.4	218.0	66.45	40.2	18.2	22.8	10.3	43.5*	19.7*	39.3	17.8		
	100	30.48	65.6	213.6	65.10	34.6	15.6	18.5	8.3	37.1*	16.8*	33.8	15.3		
	110	33.53	62.8	208.6	63.58	29.8	13.5	15.2	6.8	33.6*	15.2*	29.0	13.1		

(continued)

GENERAL INFORMATION ONLY

① Refer to page 9. Capacities shown in thousand pounds and thousand kilograms.

Length		HC-258 hammerhead boom										"A" upper & "A" bumper counterweights						"AB" upper & no bumper counterweights					
		Radius					Boom point height		Angle			On outriggers			On tires (static)			On outriggers only					
		Feet	meters	Degrees	Feet	meters	Over rear Pounds	Over rear kilograms	Over side and 360° swing Pounds	Over side and 360° swing kilograms	Over rear Pounds	Over rear kilograms	Over side Pounds	Over side kilograms	Over rear Pounds	Over rear kilograms	Over side Pounds	Over side kilograms	Over rear Pounds	Over rear kilograms	Over side and 360° swing Pounds	Over side and 360° swing kilograms	
230' (70.10 m)	120	36.58	59.9	203.0	61.87	25.8	11.7	12.4	5.6	29.2*	13.2*	25.1	11.3	29.2*	13.2*	25.1	11.3	29.2*	13.2*	25.1	11.3		
	130	39.62	57.0	196.7	59.95	22.5	10.2	10.2	4.6	25.3*	11.4*	21.9	9.9	25.3*	11.4*	21.9	9.9	25.3*	11.4*	21.9	9.9		
	140	42.67	53.9	189.7	57.82	19.8	8.3	8.3	3.0	22.1*	10.0*	19.2	8.7	22.1*	10.0*	19.2	8.7	22.1*	10.0*	19.2	8.7		
	150	45.72	50.7	181.7	55.38	17.4	7.8	6.7	3.0	19.3*	8.7*	16.9	7.6	19.3*	8.7*	16.9	7.6	19.3*	8.7*	16.9	7.6		
	160	48.77	47.3	172.9	52.70	15.4	6.9	5.4	2.4	16.9*	7.6*	14.9	6.7	16.9*	7.6*	14.9	6.7	16.9*	7.6*	14.9	6.7		
	170	51.82	43.7	162.8	49.62	13.6	6.1	4.2	1.9	14.8*	5.8*	13.1	5.9	14.8*	5.8*	13.1	5.9	14.8*	5.8*	13.1	5.9		
	180	54.86	39.9	151.4	46.15	12.0	5.4	3.1	1.4	13.0*	5.8*	11.6	5.2	13.0*	5.8*	11.6	5.2	13.0*	5.8*	11.6	5.2		
	190	57.91	35.8	138.2	42.12	10.6	4.8	—	—	11.3*	5.1*	10.2	4.6	11.3*	5.1*	10.2	4.6	11.3*	5.1*	10.2	4.6		
	200	60.96	31.1	122.7	37.40	9.3	4.2	—	—	9.8*	4.4*	9.0	4.0	9.8*	4.4*	9.0	4.0	9.8*	4.4*	9.0	4.0		
	210	64.01	25.7	103.7	31.52	8.2	3.7	—	—	8.5*	3.8*	7.8	3.5	8.5*	3.8*	7.8	3.5	8.5*	3.8*	7.8	3.5		
	220	67.06	18.9	78.6	23.96	7.2	3.2	—	—	7.2*	3.2*	6.8	3.0	7.2*	3.2*	6.8	3.0	7.2*	3.2*	6.8	3.0		
	230	70.10	7.2	33.3	10.15	6.2	2.8	—	—	5.9*	2.6*	5.9	2.6	5.9*	2.6*	5.9	2.6	5.9*	2.6*	5.9	2.6		
	240' (73.15 m)	41	12.50	81.6	242.0	73.76	74.7	33.8*	74.7*	33.8*	74.7	33.8*	74.7	33.8*	74.7	33.8*	74.7	33.8*	74.7	33.8*	74.7	33.8*	
		50	15.24	79.4	240.4	73.27	70.6*	32.0*	65.4	29.6	70.6*	32.0*	65.4	29.6	70.6*	32.0*	65.4	29.6	70.6*	32.0*	65.4	29.6	
		60	18.29	76.9	238.2	72.60	68.4*	31.0*	47.1	21.3	68.4*	31.0*	47.1	21.3	68.4*	31.0*	47.1	21.3	68.4*	31.0*	47.1	21.3	
		70	21.34	74.4	235.5	71.78	58.2*	26.3*	36.1	16.3	58.2*	26.3*	36.1	16.3	58.2*	26.3*	36.1	16.3	58.2*	26.3*	36.1	16.3	
		80	24.38	71.9	232.4	70.84	47.8	21.6	28.3	12.8	47.8	21.6	28.3	12.8	47.8	21.6	28.3	12.8	47.8	21.6	28.3	12.8	
		90	27.43	69.3	228.7	69.71	39.9	18.0	22.6	10.2	39.9	18.0	22.6	10.2	39.9	18.0	22.6	10.2	39.9	18.0	22.6	10.2	
		100	30.48	66.7	224.6	68.46	34.3	15.5	18.3	8.3	34.3	15.5	18.3	8.3	34.3	15.5	18.3	8.3	34.3	15.5	18.3	8.3	
		110	33.53	64.0	219.9	67.03	29.4	13.3	14.9	6.7	29.4	13.3	14.9	6.7	29.4	13.3	14.9	6.7	29.4	13.3	14.9	6.7	
120		36.58	61.3	214.6	65.41	25.5	11.5	12.1	5.4	25.5	11.5	12.1	5.4	25.5	11.5	12.1	5.4	25.5	11.5	12.1	5.4		
130		39.62	58.5	208.6	63.58	22.2	10.0	9.9	4.4	22.2	10.0	9.9	4.4	22.2	10.0	9.9	4.4	22.2	10.0	9.9	4.4		
140		42.67	55.6	202.0	61.57	19.4	8.7	8.0	3.6	19.4	8.7	8.0	3.6	19.4	8.7	8.0	3.6	19.4	8.7	8.0	3.6		
150		45.72	52.6	194.6	59.31	17.0	7.7	6.4	2.9	17.0	7.7	6.4	2.9	17.0	7.7	6.4	2.9	17.0	7.7	6.4	2.9		
160		48.77	49.5	186.3	56.78	15.0	6.8	5.0	2.2	15.0	6.8	5.0	2.2	15.0	6.8	5.0	2.2	15.0	6.8	5.0	2.2		
170		51.82	46.2	177.1	53.98	13.2	5.9	3.8	1.7	13.2	5.9	3.8	1.7	13.2	5.9	3.8	1.7	13.2	5.9	3.8	1.7		
180		54.86	42.8	166.7	50.81	11.6	5.2	—	—	11.6	5.2	—	—	11.6	5.2	—	—	11.6	5.2	—	—		
190		57.91	39.0	154.9	47.21	10.2	4.6	—	—	10.2	4.6	—	—	10.2	4.6	—	—	10.2	4.6	—	—		
200		60.96	35.0	141.3	43.07	9.0	4.0	—	—	9.0	4.0	—	—	9.0	4.0	—	—	9.0	4.0	—	—		
210		64.01	30.4	125.4	38.22	7.8	3.5	—	—	7.8	3.5	—	—	7.8	3.5	—	—	7.8	3.5	—	—		
220		67.06	25.2	105.9	32.28	6.8	3.0	—	—	6.8	3.0	—	—	6.8	3.0	—	—	6.8	3.0	—	—		
230		70.10	18.5	80.2	24.44	5.9	2.6	—	—	5.9	2.6	—	—	5.9	2.6	—	—	5.9	2.6	—	—		
240	73.15	7.1	33.8	10.30	4.7	2.2	—	—	4.7	2.2	—	—	4.7	2.2	—	—	4.7	2.2	—	—			
250' (76.20 m)	42	12.80	81.7	252.0	76.81	64.8*	29.3*	64.8*	29.3*	64.8*	29.3*	64.8*	29.3*	64.8*	29.3*	64.8*	29.3*	64.8*	29.3*	64.8*	29.3*		
	50	15.24	79.8	250.6	76.38	63.8*	28.9*	63.8*	28.9*	63.8*	28.9*	63.8*	28.9*	63.8*	28.9*	63.8*	28.9*	63.8*	28.9*	63.8*	28.9*		
	60	18.29	77.4	248.5	75.44	62.3*	28.2*	46.7	21.1	62.3*	28.2*	46.7	21.1	62.3*	28.2*	46.7	21.1	62.3*	28.2*	46.7	21.1		
	70	21.34	75.1	246.5	74.95	56.4*	25.5*	35.9	16.2	56.4*	25.5*	35.9	16.2	56.4*	25.5*	35.9	16.2	56.4*	25.5*	35.9	16.2		
	80	24.38	72.6	242.9	74.04	47.5	21.5	28.0	12.7	47.5	21.5	28.0	12.7	47.5	21.5	28.0	12.7	47.5	21.5	28.0	12.7		
	90	27.43	70.2	239.4	72.97	39.6	17.9	22.3	10.1	39.6	17.9	22.3	10.1	39.6	17.9	22.3	10.1	39.6	17.9	22.3	10.1		
	100	30.48	67.7	235.5	71.78	34.0	15.4	18.0	8.1	34.0	15.4	18.0	8.1	34.0	15.4	18.0	8.1	34.0	15.4	18.0	8.1		
	110	33.53	65.2	231.0	70.41	29.1	13.1	14.6	6.6	29.1	13.1	14.6	6.6	29.1	13.1	14.6	6.6	29.1	13.1	14.6	6.6		
	120	36.58	62.6	225.9	68.85	25.2	11.4	11.8	5.3	25.2	11.4	11.8	5.3	25.2	11.4	11.8	5.3	25.2	11.4	11.8	5.3		
	130	39.62	59.9	220.3	67.15	21.9	9.9	9.6	4.3	21.9	9.9	9.6	4.3	21.9	9.9	9.6	4.3	21.9	9.9	9.6	4.3		
	140	42.67	57.2	214.1	65.26	19.1	8.6	7.7	3.4	19.1	8.6	7.7	3.4	19.1	8.6	7.7	3.4	19.1	8.6	7.7	3.4		
	150	45.72	54.4	207.1	63.12	16.7	7.5	6.1	2.7	16.7	7.5	6.1	2.7	16.7	7.5	6.1	2.7	16.7	7.5	6.1	2.7		
	160	48.77	51.5	199.4	60.78	14.7	6.6	4.7	1.5	14.7	6.6	4.7	1.5	14.7	6.6	4.7	1.5	14.7	6.6	4.7	1.5		
	170	51.82	48.4	190.8	58.03	12.9	5.8	3.5	—	12.9	5.8	3.5	—	12.9	5.8	3.5	—	12.9	5.8	3.5	—		
	180	54.86	45.2	181.3	55.26	11.3	5.1	—	—	11.3	5.1	—	—	11.3	5.1	—	—	11.3	5.1	—	—		
	190	57.91	41.8	170.5	51.97	9.9	4.4	—	—	9.9	4.4	—	—	9.9	4.4	—	—	9.9	4.4	—	—		
	200	60.96	38.2	158.4	48.28	8.6	3.9	—	—	8.6	3.9	—	—	8.6	3.9	—	—	8.6	3.9	—	—		
	210	64.01	34.2	144.4	44.01	7.5	3.4	—	—	7.5	3.4	—	—	7.5	3.4	—	—	7.5	3.4	—	—		
	220	67.06	29.8	128.0	39.01	6.5	2.9	—	—	6.5	2.9	—	—	6.5	2.9	—	—	6.5	2.9	—	—		
	230	70.10	24.6	108.1	32.95	5.6	2.5	—	—	5.6	2.5	—	—	5.6	2.5	—	—	5.6	2.5	—	—		
240	73.15	18.1	81.7	24.90	4.7	2.1	—	—	4.7	2.1	—	—	4.7	2.1	—	—	4.7	2.1	—	—			
250	76.20	6.9	34.4	10.49	3.9	1.7	—	—	3.9	1.7	—	—	3.9	1.7	—	—	3.9	1.7	—	—			

© Refer to page 9. Capacities shown in thousand pounds and thousand kilograms.

GENERAL INFORMATION ONLY

(continued)

HC-258 hammerhead boom				"A" upper & "A" bumper counterweights				"AB" upper & no bumper counterweights									
Length	Radius		Angle Degrees	Boom point height [ⓐ]		On outriggers				On tires (static)							
	Feet	meters		Feet	meters	Over rear		Over side and 360° swing [ⓑ]		Over rear		Over side		Over rear		Over side and 360° swing [ⓑ]	
						Pounds	kilograms	Pounds	kilograms	Pounds	kilograms	Pounds	kilograms	Pounds	kilograms	Pounds	kilograms
44	13.41	79.80	81.6	261.8	79.80	58.8*	26.6*	58.8*	26.6*	58.8*	26.6*	58.8*	26.6*	58.8*	26.6*	58.8*	26.6*
50	15.24	79.49	80.2	260.8	79.49	57.9*	26.2*	57.9*	26.2*	57.9*	26.2*	57.9*	26.2*	57.9*	26.2*	57.9*	26.2*
60	18.29	78.85	77.9	258.7	78.85	56.5*	25.6*	56.5*	25.6*	56.5*	25.6*	56.5*	25.6*	56.5*	25.6*	56.5*	25.6*
70	21.34	78.12	75.6	256.3	78.12	51.7*	23.4*	51.7*	23.4*	51.7*	23.4*	51.7*	23.4*	51.7*	23.4*	51.7*	23.4*
80	24.38	77.24	73.3	253.4	77.24	46.8*	21.2*	46.8*	21.2*	46.8*	21.2*	46.8*	21.2*	46.8*	21.2*	46.8*	21.2*
90	27.43	76.23	71.0	250.1	76.23	39.3	17.8	39.3	17.8	39.3	17.8	39.3	17.8	39.3	17.8	39.3	17.8
100	30.48	75.07	68.6	246.3	75.07	33.7	15.2	33.7	15.2	33.7	15.2	33.7	15.2	33.7	15.2	33.7	15.2
110	33.53	73.76	66.2	242.0	73.76	28.8	13.0	28.8	13.0	28.8	13.0	28.8	13.0	28.8	13.0	28.8	13.0
120	36.58	72.30	63.7	237.2	72.30	24.9	11.2	24.9	11.2	24.9	11.2	24.9	11.2	24.9	11.2	24.9	11.2
130	39.62	70.68	61.2	231.9	70.68	21.6	9.7	21.6	9.7	21.6	9.7	21.6	9.7	21.6	9.7	21.6	9.7
140	42.67	68.88	58.6	226.0	68.88	18.8	8.5	18.8	8.5	18.8	8.5	18.8	8.5	18.8	8.5	18.8	8.5
150	45.72	66.87	56.0	219.4	66.87	16.4	7.4	16.4	7.4	16.4	7.4	16.4	7.4	16.4	7.4	16.4	7.4
160	48.77	64.65	53.2	212.1	64.65	14.3	6.4	14.3	6.4	14.3	6.4	14.3	6.4	14.3	6.4	14.3	6.4
170	51.82	62.21	50.4	204.1	62.21	12.6	5.7	12.6	5.7	12.6	5.7	12.6	5.7	12.6	5.7	12.6	5.7
180	54.86	59.50	47.4	195.2	59.50	11.0	4.9	11.0	4.9	11.0	4.9	11.0	4.9	11.0	4.9	11.0	4.9
190	57.91	56.48	44.3	185.3	56.48	9.6	4.3	9.6	4.3	9.6	4.3	9.6	4.3	9.6	4.3	9.6	4.3
200	60.96	53.10	41.0	174.2	53.10	8.3	3.7	8.3	3.7	8.3	3.7	8.3	3.7	8.3	3.7	8.3	3.7
210	64.01	49.29	37.4	161.7	49.29	7.2	3.2	7.2	3.2	7.2	3.2	7.2	3.2	7.2	3.2	7.2	3.2
220	67.06	44.93	33.5	147.4	44.93	6.2	2.8	6.2	2.8	6.2	2.8	6.2	2.8	6.2	2.8	6.2	2.8
230	70.10	39.81	29.2	130.6	39.81	5.2	2.3	5.2	2.3	5.2	2.3	5.2	2.3	5.2	2.3	5.2	2.3
240	73.15	33.59	24.1	110.2	33.59	4.4	1.9	4.4	1.9	4.4	1.9	4.4	1.9	4.4	1.9	4.4	1.9
250	76.20	25.39	17.7	83.3	25.39	3.6	1.6	3.6	1.6	3.6	1.6	3.6	1.6	3.6	1.6	3.6	1.6
260	79.25	10.64	6.8	34.9	10.64	2.9	1.3	2.9	1.3	2.9	1.3	2.9	1.3	2.9	1.3	2.9	1.3
45	13.72	82.81	81.7	271.7	82.81	53.3*	24.1*	53.3*	24.1*	53.3*	24.1*	53.3*	24.1*	53.3*	24.1*	53.3*	24.1*
50	15.24	82.57	80.6	270.9	82.57	52.4*	23.7*	52.4*	23.7*	52.4*	23.7*	52.4*	23.7*	52.4*	23.7*	52.4*	23.7*
60	18.29	81.99	78.4	269.0	81.99	51.2*	23.2*	51.2*	23.2*	51.2*	23.2*	51.2*	23.2*	51.2*	23.2*	51.2*	23.2*
70	21.34	81.26	76.2	266.6	81.26	47.2*	21.4*	47.2*	21.4*	47.2*	21.4*	47.2*	21.4*	47.2*	21.4*	47.2*	21.4*
80	24.38	80.41	74.0	263.8	80.41	42.8*	19.4*	42.8*	19.4*	42.8*	19.4*	42.8*	19.4*	42.8*	19.4*	42.8*	19.4*
90	27.43	79.46	71.7	260.7	79.46	38.7*	17.5*	38.7*	17.5*	38.7*	17.5*	38.7*	17.5*	38.7*	17.5*	38.7*	17.5*
100	30.48	78.33	69.5	257.0	78.33	32.7*	14.8*	32.7*	14.8*	32.7*	14.8*	32.7*	14.8*	32.7*	14.8*	32.7*	14.8*
110	33.53	75.71	67.1	252.9	75.71	28.5	12.9	28.5	12.9	28.5	12.9	28.5	12.9	28.5	12.9	28.5	12.9
120	36.58	74.16	64.8	248.4	74.16	24.5	11.1	24.5	11.1	24.5	11.1	24.5	11.1	24.5	11.1	24.5	11.1
130	39.62	72.45	62.4	243.3	72.45	21.2	9.6	21.2	9.6	21.2	9.6	21.2	9.6	21.2	9.6	21.2	9.6
140	42.67	70.53	59.9	237.7	70.53	18.5	8.3	18.5	8.3	18.5	8.3	18.5	8.3	18.5	8.3	18.5	8.3
150	45.72	68.46	57.4	231.4	68.46	16.1	7.3	16.1	7.3	16.1	7.3	16.1	7.3	16.1	7.3	16.1	7.3
160	48.77	66.14	54.8	224.6	66.14	14.0	6.3	14.0	6.3	14.0	6.3	14.0	6.3	14.0	6.3	14.0	6.3
170	51.82	63.61	52.1	217.0	63.61	12.2	5.5	12.2	5.5	12.2	5.5	12.2	5.5	12.2	5.5	12.2	5.5
180	54.86	60.81	49.4	208.7	60.81	10.6	4.8	10.6	4.8	10.6	4.8	10.6	4.8	10.6	4.8	10.6	4.8
190	57.91	57.70	46.5	199.5	57.70	9.2	4.1	9.2	4.1	9.2	4.1	9.2	4.1	9.2	4.1	9.2	4.1
200	60.96	54.22	43.4	189.3	54.22	8.0	3.6	8.0	3.6	8.0	3.6	8.0	3.6	8.0	3.6	8.0	3.6
210	64.01	50.29	40.1	177.9	50.29	6.9	3.1	6.9	3.1	6.9	3.1	6.9	3.1	6.9	3.1	6.9	3.1
220	67.06	45.81	36.7	165.0	45.81	5.8	2.6	5.8	2.6	5.8	2.6	5.8	2.6	5.8	2.6	5.8	2.6
230	70.10	40.57	32.9	150.3	40.57	4.9	2.2	4.9	2.2	4.9	2.2	4.9	2.2	4.9	2.2	4.9	2.2
240	73.15	34.23	28.6	133.1	34.23	4.1	1.8	4.1	1.8	4.1	1.8	4.1	1.8	4.1	1.8	4.1	1.8
250	76.20	25.85	17.4	84.8	25.85	3.3	1.4	3.3	1.4	3.3	1.4	3.3	1.4	3.3	1.4	3.3	1.4
260	79.25	10.76	6.6	35.5	10.76	2.9	1.3	2.9	1.3	2.9	1.3	2.9	1.3	2.9	1.3	2.9	1.3

ⓐ Refer to page 9. Capacities shown in thousand pounds and thousand kilograms.

(continued)

GENERAL INFORMATION ONLY

Length		HC-258 hammerhead boom										'A' upper & 'A' bumper counterweights						'AB' upper & no bumper counterweights					
		Radius		Angle Degrees	Boom point height ^①		On outriggers				On tires (static)				On outriggers only			On outriggers only					
		Feet	meters		Feet	meters	Over rear Pounds	Over rear kilograms	Over side and 360° swing ^② Pounds	Over side and 360° swing ^② kilograms	Over rear Pounds	Over rear kilograms	Over side Pounds	Over side kilograms	Over rear Pounds	Over rear kilograms	Over side and 360° swing ^② Pounds	Over side and 360° swing ^② kilograms					
47	14.33	81.5	281.5	85.80	48.4*	21.9*	48.4*	21.9*	48.4*	21.9*	48.4*	21.9*	48.4*	21.9*	48.4*	21.9*	21.9*						
50	15.24	80.9	281.1	85.68	48.0*	21.7*	48.0*	21.7*	48.0*	21.7*	48.0*	21.7*	48.0*	21.7*	48.0*	21.7*	21.7*						
60	18.29	78.8	279.2	85.10	46.5*	21.0*	46.5*	21.0*	46.5*	21.0*	46.5*	21.0*	46.5*	21.0*	46.5*	21.0*	21.0*						
70	21.34	76.7	276.9	84.40	43.6*	19.7*	43.6*	19.7*	43.6*	19.7*	43.6*	19.7*	43.6*	19.7*	43.6*	19.7*	19.7*						
80	24.38	74.6	274.3	83.61	39.2*	17.7*	39.2*	17.7*	39.2*	17.7*	39.2*	17.7*	39.2*	17.7*	39.2*	17.7*	17.7*						
90	27.43	72.4	271.2	82.66	32.7*	14.8*	32.7*	14.8*	32.7*	14.8*	32.7*	14.8*	32.7*	14.8*	32.7*	14.8*	14.8*						
100	30.48	70.2	267.7	81.59	29.4*	13.3*	29.4*	13.3*	29.4*	13.3*	29.4*	13.3*	29.4*	13.3*	29.4*	13.3*	13.3*						
110	33.53	68.0	263.8	80.41	26.0*	11.7*	26.0*	11.7*	26.0*	11.7*	26.0*	11.7*	26.0*	11.7*	26.0*	11.7*	11.7*						
120	36.58	65.8	259.4	79.07	23.1*	10.4*	23.1*	10.4*	23.1*	10.4*	23.1*	10.4*	23.1*	10.4*	23.1*	10.4*	10.4*						
130	39.62	63.5	254.6	77.60	20.5*	9.2*	20.5*	9.2*	20.5*	9.2*	20.5*	9.2*	20.5*	9.2*	20.5*	9.2*	9.2*						
140	42.67	61.1	249.2	75.96	18.1	8.2	18.1	8.2	18.1	8.2	18.1	8.2	18.1	8.2	18.1	8.2	8.2						
150	45.72	58.7	243.3	74.16	15.8	7.1	15.8	7.1	15.8	7.1	15.8	7.1	15.8	7.1	15.8	7.1	7.1						
160	48.77	56.3	236.8	72.18	13.7	6.2	13.7	6.2	13.7	6.2	13.7	6.2	13.7	6.2	13.7	6.2	6.2						
170	51.82	53.7	229.7	70.01	11.9	5.3	11.9	5.3	11.9	5.3	11.9	5.3	11.9	5.3	11.9	5.3	5.3						
180	54.86	51.1	221.8	67.60	10.3	4.6	10.3	4.6	10.3	4.6	10.3	4.6	10.3	4.6	10.3	4.6	4.6						
190	57.91	48.4	213.2	64.98	8.9	4.0	8.9	4.0	8.9	4.0	8.9	4.0	8.9	4.0	8.9	4.0	4.0						
200	60.96	45.6	203.7	62.09	7.6	3.4	7.6	3.4	7.6	3.4	7.6	3.4	7.6	3.4	7.6	3.4	3.4						
210	64.01	42.6	193.2	58.89	6.5	2.9	6.5	2.9	6.5	2.9	6.5	2.9	6.5	2.9	6.5	2.9	2.9						
220	67.06	39.4	181.4	55.29	5.5	2.4	5.5	2.4	5.5	2.4	5.5	2.4	5.5	2.4	5.5	2.4	2.4						
230	70.10	36.0	168.3	51.30	4.6	2.0	4.6	2.0	4.6	2.0	4.6	2.0	4.6	2.0	4.6	2.0	2.0						
240	73.15	32.2	153.2	46.70	3.7	1.6	3.7	1.6	3.7	1.6	3.7	1.6	3.7	1.6	3.7	1.6	1.6						
250	76.20	28.1	135.6	41.33	3.0	1.3	3.0	1.3	3.0	1.3	3.0	1.3	3.0	1.3	3.0	1.3	1.3						
260	79.25	23.2	114.3	34.84	—	—	—	—	—	—	—	—	—	—	—	—	—						
48	14.63	81.6	291.5	88.85	44.1*	20.0*	44.1*	20.0*	44.1*	20.0*	44.1*	20.0*	44.1*	20.0*	44.1*	20.0*	20.0*						
50	15.24	81.2	291.2	88.76	44.1*	20.0*	44.1*	20.0*	44.1*	20.0*	44.1*	20.0*	44.1*	20.0*	44.1*	20.0*	20.0*						
60	18.29	79.2	289.4	86.21	42.7*	19.3*	42.7*	19.3*	42.7*	19.3*	42.7*	19.3*	42.7*	19.3*	42.7*	19.3*	19.3*						
70	21.34	77.2	287.2	87.54	40.0*	18.1*	40.0*	18.1*	40.0*	18.1*	40.0*	18.1*	40.0*	18.1*	40.0*	18.1*	18.1*						
80	24.38	75.1	284.6	86.75	38.2*	17.0*	38.2*	17.0*	38.2*	17.0*	38.2*	17.0*	38.2*	17.0*	38.2*	17.0*	17.0*						
90	27.43	73.0	281.7	85.86	36.0*	16.0*	36.0*	16.0*	36.0*	16.0*	36.0*	16.0*	36.0*	16.0*	36.0*	16.0*	16.0*						
100	30.48	70.9	278.3	84.83	34.6*	15.0*	34.6*	15.0*	34.6*	15.0*	34.6*	15.0*	34.6*	15.0*	34.6*	15.0*	15.0*						
110	33.53	68.8	274.6	83.70	33.2*	14.0*	33.2*	14.0*	33.2*	14.0*	33.2*	14.0*	33.2*	14.0*	33.2*	14.0*	14.0*						
120	36.58	66.7	270.4	82.42	32.0*	13.0*	32.0*	13.0*	32.0*	13.0*	32.0*	13.0*	32.0*	13.0*	32.0*	13.0*	13.0*						
130	39.62	64.5	265.7	80.99	30.8*	12.0*	30.8*	12.0*	30.8*	12.0*	30.8*	12.0*	30.8*	12.0*	30.8*	12.0*	12.0*						
140	42.67	62.2	260.6	79.43	29.6*	11.0*	29.6*	11.0*	29.6*	11.0*	29.6*	11.0*	29.6*	11.0*	29.6*	11.0*	11.0*						
150	45.72	59.9	255.0	77.72	28.4*	10.0*	28.4*	10.0*	28.4*	10.0*	28.4*	10.0*	28.4*	10.0*	28.4*	10.0*	10.0*						
160	48.77	57.6	248.8	75.83	27.2*	9.0*	27.2*	9.0*	27.2*	9.0*	27.2*	9.0*	27.2*	9.0*	27.2*	9.0*	9.0*						
170	51.82	55.2	242.0	73.76	26.0*	8.0*	26.0*	8.0*	26.0*	8.0*	26.0*	8.0*	26.0*	8.0*	26.0*	8.0*	8.0*						
180	54.86	52.7	234.6	71.51	24.6*	7.0*	24.6*	7.0*	24.6*	7.0*	24.6*	7.0*	24.6*	7.0*	24.6*	7.0*	7.0*						
190	57.91	50.2	226.5	69.04	23.1*	6.0*	23.1*	6.0*	23.1*	6.0*	23.1*	6.0*	23.1*	6.0*	23.1*	6.0*	6.0*						
200	60.96	47.5	217.6	66.32	21.7*	5.0*	21.7*	5.0*	21.7*	5.0*	21.7*	5.0*	21.7*	5.0*	21.7*	5.0*	5.0*						
210	64.01	44.7	207.8	63.34	20.5*	4.2	20.5*	4.2	20.5*	4.2	20.5*	4.2	20.5*	4.2	20.5*	4.2	4.2						
220	67.06	41.8	197.0	60.04	19.3*	3.6	19.3*	3.6	19.3*	3.6	19.3*	3.6	19.3*	3.6	19.3*	3.6	3.6						
230	70.10	38.7	184.9	56.36	18.1*	3.1	18.1*	3.1	18.1*	3.1	18.1*	3.1	18.1*	3.1	18.1*	3.1	3.1						
240	73.15	35.3	171.4	52.24	16.9*	2.7	16.9*	2.7	16.9*	2.7	16.9*	2.7	16.9*	2.7	16.9*	2.7	2.7						
250	76.20	31.6	156.0	47.55	15.8*	2.2	15.8*	2.2	15.8*	2.2	15.8*	2.2	15.8*	2.2	15.8*	2.2	2.2						
260	79.25	27.6	138.0	42.06	14.6*	1.9	14.6*	1.9	14.6*	1.9	14.6*	1.9	14.6*	1.9	14.6*	1.9	1.9						

Capacities shown in thousand pounds and thousand kilograms.
 ① Measured vertically from center of boom head sheave to ground — machine standing on tires.
 ② Front center jack must be set in operating position for 360° swing capacities.

GENERAL INFORMATION ONLY

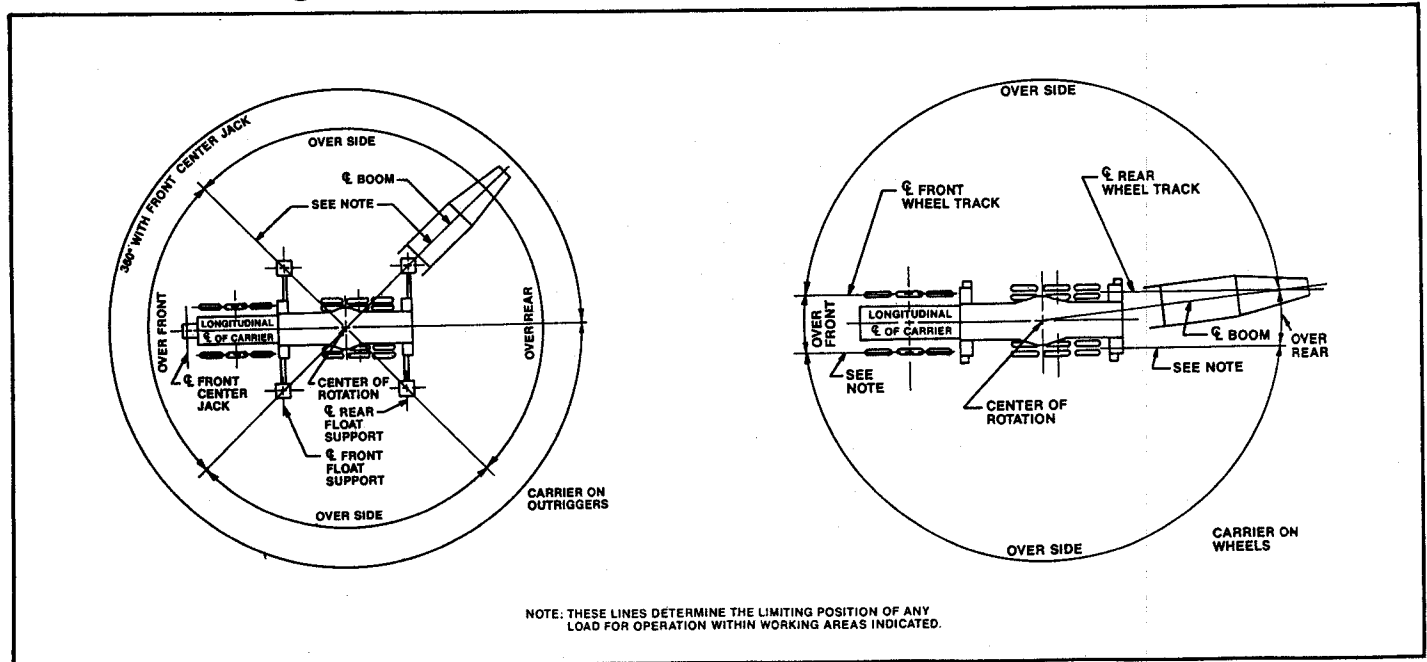
HC-258 lifting crane capacities

GENERAL INFORMATION ONLY

Notes — lifting crane capacities

- Capacities included in this chart are the maximum allowable, and are based on machine standing level on firm supporting surface under ideal job conditions.
- Capacities are based on 85% of minimum tipping loads unless marked with an asterisk.
 - An asterisk(*) indicates capacities based on factors other than those which would cause a tipping condition.
- Capacities are based on freely suspended loads and make no allowance for such factors as the effect of wind, sudden stopping of loads, supporting surface conditions, inflation of tires, and operating speeds. Operator must reduce load ratings to take such conditions into account. Deduction from rated capacities must be made for weight of hook block, sling, spreader bar, jib, weighted ball/hook, or other suspended gear.
- Least stable rated condition is over the side.
- Boom live mast must be used for all capacities on this chart.
- Boom live mast may be used as short boom for machine assembly/disassembly only — it is not to be used for general lift crane service.
 - Maximum lifting capacity of mast is 70,000 lbs. (31 752 kg) from 12' (3.66 m) to 33' (10.06 m) maximum radius with machine on outriggers (front and rear) with "A" upper ctwt.
 - Minimum 3-part load hoist line (1 1/8" — 29 mm dia., type "N" wire rope) — **off rear main operating drum only** — required to lift 70,000 lbs. (31 752 kg) load.
- For lifting 400,000 lbs. (181 440 kg), 12-part load hoist line 1 1/8" — (29 mm) diameter, type "N" wire rope is required. Check parts of line required for all capacities.
- When swinging rated load from end of carrier to side of carrier, allowance must be made for any carrier deflection which will cause load radius to increase.
- Do not swing upper until outriggers are set in proper working position.
- Main boom length with "AB" upper and no bumper counterweight, must not exceed 290' (88.39 m). Main boom length with "A" upper and "A" bumper counterweight must not exceed 280' (85.34 m).
- Boom midpoint suspension pendants required for boom lengths exceeding 230' (70.10 m).
- Boom must be assembled per boom make-up label #28P673.
- Jib cannot be used on boom longer than 280' (85.34 m).
- Jib not permitted on any main boom length when machine is equipped with only "A" upper and "A" bumper counterweights.
- When handling loads on main load hoist line with jib mounted on boom, reduce rated boom capacities as follows to compensate for jib weights —
 - 30' (9.14 m) jib — 2,600 lbs. (1 179 kg)
 - 50' (15.24 m) jib — 3,300 lbs. (1 496 kg)
 - 70' (21.34 m) jib — 4,000 lbs. (1 814 kg)
- These capacities apply only to the machine as originally manufactured and normally equipped by FMC Corporation, Cable Crane and Excavator Division.

HC-258 working areas



We are constantly improving our products and therefore reserve the right to change designs and specifications.

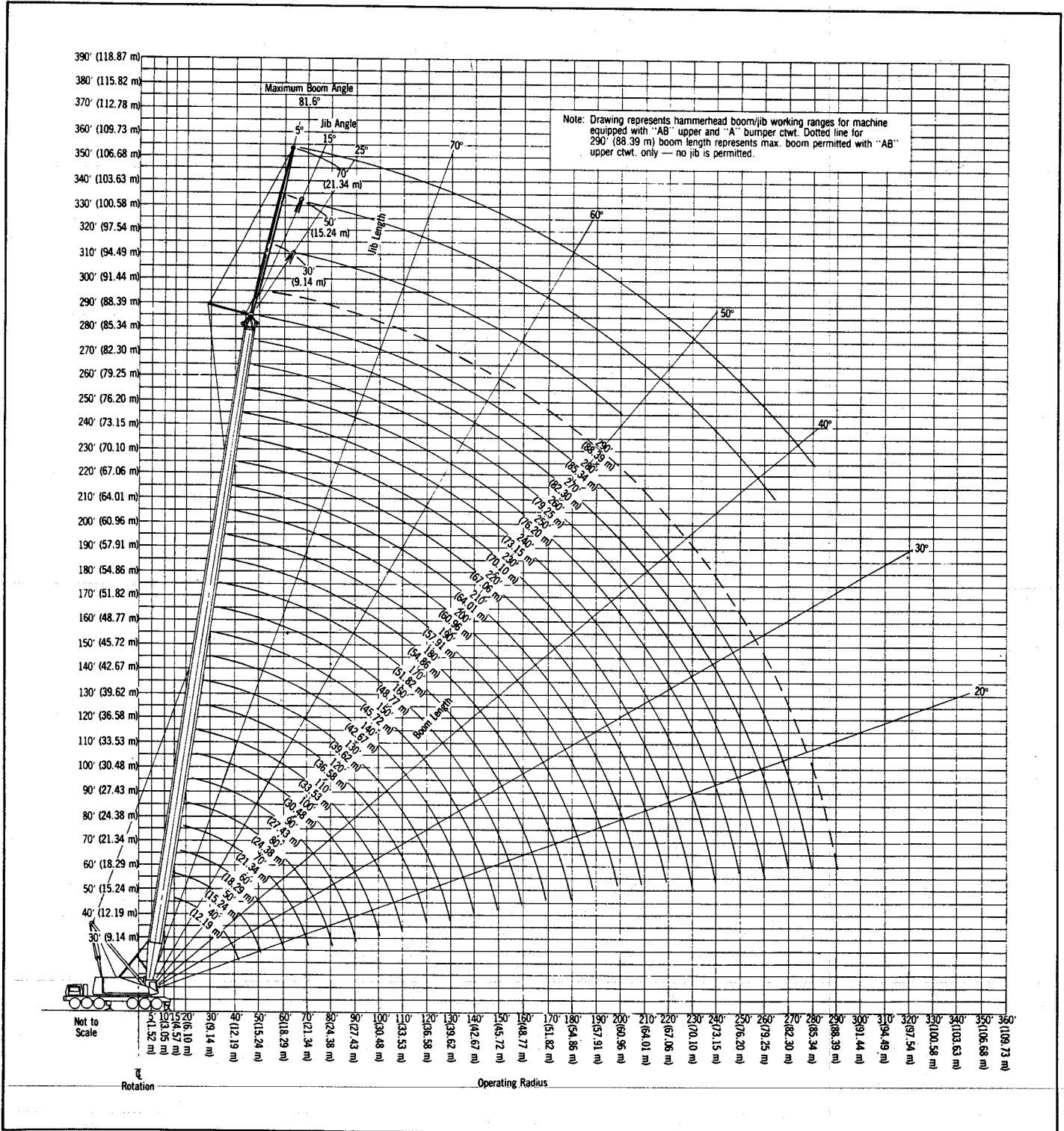


HC-258 boom working ranges — with hammerhead boom

Boom — tubular; 80" (2.03 m) wide, 68" (1.73 m) deep with 5' (1.52 m) long hammerhead top section, 1½" (38 mm) diameter boom pendants, boom live mast, and boom midpoint suspension pendants as required.

Mounting — rubber tire mobile base; FMC 12 x 6 drive, 288" (7.32 m) wheelbase, 11' 10" (3.61 m) wide.

Counterweight — Refer to charts page 1.



Link-Belt® HC-258 lifting crane capacities — tapered boom

PCSA Class 21-1346
Refer to notes page 9.

Boom — tubular; 80" (2.03 m) wide, 68" (1.73 m) deep with 45' (13.72 m) long tapered top section, 1½" (38 mm) diameter boom pendants, boom live mast, and boom midpoint suspension pendants as required.

Jib — tubular; 32" (0.81 m) wide, 24" (0.61 m) deep.

Counterweights — Refer to charts below.

Mounting — rubber tire mobile base: FMC; 12 x 6 drive, 288" (7.32 m) wheelbase, 11' 10" (3.61 m) wide.

GENERAL INFORMATION ONLY

Counterweights					
"A" upper		"AB" upper		"A" bumper	
Pounds	kilograms	Pounds	kilograms	Pounds	kilograms
21,000	9 526	70,000	31 752	22,500	10 206

Tapered boom or boom + jib machine can lift off ground unassisted, without load. ①

Standard HC-258 must be equipped with the counterweight combinations below when the indicated boom or boom + jib lengths are used.	Minimum/maximum boom or boom + jib lengths allowed	On outriggers							
		Over rear				Over side			
		Boom		Boom + jib		Boom		Boom + jib	
		Feet	meters	Feet	meters	Feet	meters	Feet	meters
"A" upper and "A" bumper	Minimum	120	36.58	120 + 30	36.58 + 9.14	120	36.58	120 + 30	36.58 + 9.14
	Maximum	290	88.39	250 + 70	76.20 + 21.34	250	76.20	210 + 70	64.01 + 21.34
"AB" upper and "A" bumper	Minimum	Not applicable		260 + 30	79.25 + 9.14	Not applicable			
	Maximum	Not applicable		300 + 70	91.44 + 21.34	Not applicable			
"AB" upper and no bumper counterweight	Minimum	120	36.58	120 + 30	36.58 + 9.14	120	36.58	120 + 30	36.58 + 9.14
	Maximum	310	94.49	270 + 70	82.30 + 21.34	290	88.39	250 + 70	76.20 + 21.34

With "A" upper and "A" bumper counterweight up to 200' (60.96 m) of boom can be lifted on tires over rear. ②

Machine travel with tapered boom or boom + jib, with no load. ①

Standard HC-258 must be equipped with the counterweight combinations below when the indicated boom or boom + jib lengths are used.	Minimum/maximum boom or boom + jib lengths allowed	On tires ②									
		Jobsite moves at 1 m.p.h. (1.61 km/h) boom at 80° boom angle, upper facing rear only.				Jobsite moves at 5 m.p.h. (8.05 km/h), with boom horizontal over rear and supported with standard suspension.					
		Boom		Boom + jib		Boom		Boom + jib			
		Feet	meters	Feet	meters	Feet	meters	Feet	meters		
"A" upper and "A" bumper	Minimum	120	36.58	Not applicable				120	36.58	120 + 30	36.58 + 9.14
	Maximum	290	88.39	Not applicable				170	51.82	130 + 70	39.62 + 21.34
"AB" upper and "A" bumper	Minimum	Not applicable		260 + 30	79.25 + 9.14	120	36.58	120 + 30	36.58 + 9.14		
	Maximum	Not applicable		300 + 70	91.44 + 21.34	180	54.86	140 + 70	42.67 + 21.34		
"AB" upper and no bumper counterweight	Minimum	120	36.58	120 + 30	36.58 + 9.14	120	36.58	120 + 30	36.58 + 9.14		
	Maximum	310	94.49	250 + 70	76.20 + 21.34	170	51.82	130 + 70	39.62 + 21.34		

① Limited to 85% of available stability with machine standing level on firm supporting surface.

② Air pressure in front and rear tires to be 100 p.s.i. (690 kPa) at 1 m.p.h., and 95 p.s.i. (655 kPa) at 5 m.p.h.

Note: Hook block may be carried only when attached to carrier.

HC-258 lifting crane capacities — with tapered boom

PCSA Class 21-1346
Refer to notes Page 9.

Boom — tubular; 80" (2.03 m) wide, 68" (1.73 m) deep with 45" (11.32 m) long tapered top section, 1 1/2" (38 mm) diameter boom pendants, boom live mast, and boom midpoint suspension pendants as required.

Mounting — rubber tire mobile base; FMC 12 x 6 drive, 288" (7.32 m) wheelbase, 11' 10" (3.61 m) wide.

Counterweights — Refer to charts page 1.

Length	HC-258 tapered boom				"A" upper & "A" bumper counterweights						"AB" upper & no bumper counterweights					
	Radius		Boom point height		On outriggers		On tires (static)		On outriggers only		On outriggers only		On outriggers only			
	Feet	meters	Feet	meters	Over rear	Over side and 360° swing	Over rear	Over side	Over rear	Over side	Over rear	Over side	Over rear	Over side and 360° swing		
120' (36.58 m)	21	6.40	125' 10"	38.36	200.0*	90.7*	104.7*	47.4*	70.0*	31.7*	200.0*	90.7*	200.0*	90.7*		
	25	7.62	125' 2"	38.16	196.2*	88.9*	93.5	42.4	59.4*	26.9*	196.2*	88.9*	196.2*	88.9*		
	30	9.14	124' 2"	37.85	165.9*	75.2*	75.1	34.0	49.6*	22.4*	184.2*	83.5*	184.2*	83.5*		
	35	10.67	122' 11"	37.47	141.3*	64.0*	62.5	28.3	42.2*	19.1*	157.8*	71.5*	157.8*	71.5*		
	40	12.19	121' 6"	37.02	122.6*	55.6*	53.2	24.1	36.8*	16.6*	135.7*	61.5*	135.7*	61.5*		
	50	15.24	117' 10"	35.90	95.9*	43.4*	40.4	18.3	27.9	12.6	105.0*	47.6*	105.0*	47.6*		
	60	18.29	113' 1"	34.46	76.9	34.8	32.2	14.6	21.5	9.7	83.7*	37.9*	83.7*	37.9*		
	70	21.34	107' 1"	32.64	62.5	28.3	26.3	11.9	17.1	7.7	69.0	31.2	69.0	31.2		
	80	24.38	101' 8"	30.39	52.2	23.6	22.0	9.9	13.8	6.2	57.7	26.1	57.7	26.1		
	90	27.43	94' 5"	27.57	44.5	20.1	18.6	8.4	11.3	5.1	49.3	22.3	49.3	22.3		
	100	30.48	87' 8"	23.97	38.5	17.4	15.8	7.1	9.3	4.2	42.8	19.4	42.8	19.4		
	110	33.53	81' 1"	19.11	33.9	15.3	13.6	6.1	7.6	3.4	37.6	17.0	37.6	17.0		
	120	36.58	74' 6"	11.13	30.0	13.6	11.7	5.3	6.2	2.8	33.5	15.1	33.5	15.1		
	130' (39.62 m)	23	7.01	135' 8"	41.35	193.9*	87.9*	99.5*	45.1*	63.8*	28.9*	193.9*	87.9*	193.9*	87.9*	
25		7.62	135' 4"	41.25	189.0*	85.7*	93.2	42.2	58.8*	26.6*	189.0*	85.7*	189.0*	85.7*		
30		9.14	134' 5"	40.97	165.4*	75.0*	74.7	33.8	49.0*	22.2*	174.6*	79.1*	174.6*	79.1*		
35		10.67	133' 3"	40.62	140.9*	63.9*	62.2	28.2	41.7*	18.9*	156.2*	70.8*	156.2*	70.8*		
40		12.19	131' 11"	40.21	122.2*	55.4*	52.9	23.9	36.3*	16.4*	134.3*	60.9*	134.3*	60.9*		
50		15.24	128' 7"	39.19	95.5*	43.3*	40.0	18.1	27.6	12.6	103.8*	47.0*	103.8*	47.0*		
60		18.29	124' 3"	37.87	76.6*	34.7*	31.9	14.4	21.2	9.6	82.7*	37.5*	82.7*	37.5*		
70		21.34	118' 11"	36.24	62.3	28.2	26.0	11.7	16.8	7.6	68.8	31.2	68.8	31.2		
80		24.38	112' 4"	34.24	52.0	23.5	21.7	9.8	13.5	6.1	57.5	26.0	57.5	26.0		
90		27.43	104' 3"	31.79	44.3	20.0	18.3	8.3	11.0	4.9	49.1	22.2	49.1	22.2		
100		30.48	94' 5"	28.77	38.3	17.3	15.6	7.0	9.0	4.0	42.6	19.3	42.6	19.3		
110		33.53	85' 1"	24.96	33.7	15.2	13.4	6.0	7.4	3.3	37.4	16.9	37.4	16.9		
120		36.58	76' 5"	19.85	29.8	13.5	11.5	5.2	6.0	2.7	33.3	15.1	33.3	15.1		
130		39.62	67' 9"	11.50	26.5	12.0	9.9	4.4	4.8	2.1	29.7	13.4	29.7	13.4		
140' (42.67 m)	24	7.32	145' 7"	44.38	181.1*	82.1*	96.7*	43.8*	60.6*	27.4*	181.1*	82.1*	181.1*	82.1*		
	25	7.62	145' 6"	44.34	179.0*	81.1*	92.9	42.1	58.3*	26.4*	179.0*	81.1*	179.0*	81.1*		
	30	9.14	144' 7"	44.08	164.9*	74.7*	74.4	33.7	48.5*	21.9*	168.5*	76.4*	168.5*	76.4*		
	35	10.67	143' 7"	43.75	140.3*	63.6*	61.9	28.0	41.1*	18.6*	154.7*	70.1*	154.7*	70.1*		
	40	12.19	142' 4"	43.37	121.6*	55.1*	52.5	23.8	35.8*	16.2*	132.9*	60.2*	132.9*	60.2*		
	50	15.24	139' 3"	42.43	95.1*	43.1*	39.7	18.0	27.3	12.3	102.6*	46.5*	102.6*	46.5*		
	60	18.29	135' 3"	41.23	76.2*	34.5*	31.6	14.3	20.9	9.4	81.7*	37.0*	81.7*	37.0*		
	70	21.34	130' 5"	39.74	62.0	28.1	25.7	11.6	16.5	7.4	68.6	31.1	68.6	31.1		
	80	24.38	124' 6"	37.94	51.7	23.4	21.3	9.6	13.2	5.9	57.2	25.9	57.2	25.9		
	90	27.43	117' 4"	35.76	44.0	19.9	17.9	8.1	10.7	4.8	48.8	22.1	48.8	22.1		
	100	30.48	108' 8"	33.13	38.0	17.2	15.2	6.8	8.7	3.9	42.3	19.1	42.3	19.1		
	110	33.53	100' 0"	29.92	33.5	15.1	13.0	5.8	7.1	3.2	37.1	16.8	37.1	16.8		
	120	36.58	98' 2"	25.90	29.6	13.4	11.2	5.0	5.7	2.5	33.1	15.0	33.1	15.0		
	130	39.62	85' 0"	20.55	26.3	11.9	9.6	4.3	4.6	2.0	29.5	13.3	29.5	13.3		
140	42.67	73' 11"	11.86	23.6	10.7	8.3	3.7	3.6	1.6	26.5	12.0	26.5	12.0			

Ⓢ Ⓢ Ⓢ — Refer to page 9. Capacities shown in thousand pounds and thousand kilograms.

(continued)

GENERAL INFORMATION ONLY

GENERAL INFORMATION ONLY



Length	HC-258 tapered boom				"A" upper & "A" bumper counterweights								"AB" upper & no bumper counterweights							
	Radius		Boom point height		On outriggers				On tires (static)				On outriggers only				Over side and 360° swing			
	Feet	meters	Feet	meters	Over rear Pounds	Over rear Kilograms	Over side and 360° swing Pounds	Over side and 360° swing Kilograms	Over rear Pounds	Over rear Kilograms	Over side Pounds	Over side Kilograms	Over rear Pounds	Over rear Kilograms	Over side Pounds	Over side Kilograms	Over rear Pounds	Over rear Kilograms		
150' (45.72 m)	26	7.92	155' 5"	47.38	170.2	77.2	167.3	75.8	40.0	55.4	25.1	170.2	77.2	170.2	77.2	170.2	77.2			
	30	9.14	154' 9"	47.17	162.2	73.5	143.9	65.2	33.5	47.9	18.4	162.2	73.5	162.2	73.5	162.2	73.5			
	35	10.67	153' 10"	46.88	139.8	63.4	121.8	55.2	27.8	40.6	17.4	152.8	69.3	152.8	69.3	152.8	69.3			
	40	12.19	152' 8"	46.52	121.1	54.9	99.4	45.0	23.6	35.2	15.9	131.7	59.7	131.7	59.7	131.7	59.7			
	50	15.24	149' 9"	45.65	94.7	42.9	67.0	30.3	17.8	20.6	12.2	101.6	46.0	101.6	46.0	101.6	46.0			
	60	18.29	146' 1"	44.54	75.8	34.3	49.4	22.4	14.1	20.6	9.3	80.8	36.6	80.8	36.6	80.8	36.6			
	70	21.34	141' 8"	43.17	61.8	28.0	38.4	17.4	11.4	16.1	7.3	68.2	30.9	68.2	30.9	68.2	30.9			
	80	24.38	136' 3"	41.52	51.4	23.3	31.2	14.1	9.5	12.9	5.8	56.9	25.8	56.9	25.8	56.9	25.8			
	90	27.43	129' 9"	39.55	43.7	19.8	25.7	11.6	7.9	10.3	4.6	48.5	21.9	48.5	21.9	48.5	21.9			
	100	30.48	122' 1"	37.21	37.7	17.1	21.6	9.7	6.7	8.4	3.8	42.0	19.0	42.0	19.0	42.0	19.0			
	110	33.53	112' 11"	34.41	33.2	15.0	18.3	8.3	5.7	6.7	3.0	36.8	16.6	36.8	16.6	36.8	16.6			
	120	36.58	101' 9"	31.02	29.3	13.2	15.7	7.1	4.9	5.4	2.4	32.8	14.8	32.8	14.8	32.8	14.8			
	130	39.62	88' 0"	28.81	26.1	11.8	13.5	6.1	4.2	4.3	1.9	29.3	13.2	29.3	13.2	29.3	13.2			
	140	42.67	69' 8"	21.23	23.3	10.5	11.7	5.5	3.6	3.3	1.4	26.3	11.9	26.3	11.9	26.3	11.9			
	150	45.72	40' 0"	12.20	20.9	9.4	10.1	4.5	3.0	3.0	—	23.6	10.7	23.6	10.7	23.6	10.7			
160' (48.77 m)	27	8.23	165' 5"	50.41	161.5	73.2	160.1	72.6	38.0	52.8	23.9	161.5	73.2	161.5	73.2	161.5	73.2			
	30	9.14	164' 11"	50.27	156.2	70.8	143.3	64.9	33.3	47.3	21.4	156.2	70.8	156.2	70.8	156.2	70.8			
	35	10.67	164' 0"	49.99	139.2	61.1	121.2	54.9	27.7	40.0	18.1	143.8	65.2	143.8	65.2	143.8	65.2			
	40	12.19	162' 11"	49.66	120.5	54.6	99.2	44.9	23.4	34.7	15.7	130.5	59.1	130.5	59.1	130.5	59.1			
	50	15.24	160' 3"	48.84	94.2	42.7	66.9	30.3	17.6	26.4	11.9	100.5	45.5	100.5	45.5	100.5	45.5			
	60	18.29	156' 10"	47.81	75.3	34.1	49.2	22.3	14.0	20.2	9.1	79.8	36.1	79.8	36.1	79.8	36.1			
	70	21.34	152' 8"	46.54	61.5	27.8	38.2	17.3	11.3	15.8	7.1	67.4	30.5	67.4	30.5	67.4	30.5			
	80	24.38	147' 9"	45.02	51.1	23.1	31.0	14.0	9.3	12.5	5.6	56.6	25.6	56.6	25.6	56.6	25.6			
	90	27.43	141' 10"	43.22	43.4	19.6	25.5	11.5	7.8	10.0	4.5	48.2	21.8	48.2	21.8	48.2	21.8			
	100	30.48	134' 10"	41.70	37.4	16.9	21.3	9.6	6.5	8.0	3.6	41.7	18.9	41.7	18.9	41.7	18.9			
	110	33.53	126' 8"	38.60	32.9	14.9	18.1	8.2	5.5	6.4	2.9	36.7	16.6	36.7	16.6	36.7	16.6			
	120	36.58	116' 11"	35.64	29.0	13.1	15.4	6.9	4.7	5.4	2.2	32.5	14.7	32.5	14.7	32.5	14.7			
	130	39.62	105' 3"	32.09	25.8	11.7	13.2	5.9	3.9	4.7	1.7	29.0	13.1	29.0	13.1	29.0	13.1			
	140	42.67	90' 10"	27.69	23.0	10.4	11.4	5.1	3.4	3.9	—	26.0	11.7	26.0	11.7	26.0	11.7			
	150	45.72	71' 10"	21.88	20.7	9.3	9.8	4.4	2.9	2.9	—	23.4	10.6	23.4	10.6	23.4	10.6			
160	48.77	41' 2"	12.54	18.6	8.4	8.5	3.8	2.4	2.4	—	20.8	9.4	20.8	9.4	20.8	9.4				
170' (51.82 m)	29	8.84	175' 2"	53.40	149.9	67.9	148.1	67.1	34.6	48.4	21.9	149.9	67.9	149.9	67.9	149.9	67.9			
	30	9.14	175' 1"	53.36	149.9	67.9	142.7	64.7	33.2	46.7	21.1	149.9	67.9	149.9	67.9	149.9	67.9			
	35	10.67	174' 2"	53.09	138.5	62.8	120.6	54.7	27.5	39.4	17.8	138.5	62.8	138.5	62.8	138.5	62.8			
	40	12.19	173' 2"	52.78	120.0	54.4	99.0	44.9	23.2	34.1	15.4	129.4	58.6	129.4	58.6	129.4	58.6			
	50	15.24	170' 8"	52.02	93.7	42.5	66.7	30.2	17.4	25.9	11.7	99.6	45.1	99.6	45.1	99.6	45.1			
	60	18.29	167' 6"	51.05	74.8	33.9	49.0	22.2	13.8	19.9	9.0	79.0	35.8	79.0	35.8	79.0	35.8			
	70	21.34	163' 8"	49.87	61.2	27.7	37.9	17.1	11.1	15.4	6.9	66.5	30.1	66.5	30.1	66.5	30.1			
	80	24.38	159' 0"	48.46	50.7	22.9	30.7	13.9	9.1	12.1	5.4	55.8	25.3	55.8	25.3	55.8	25.3			
	90	27.43	153' 7"	46.80	43.0	19.5	25.2	11.4	7.6	9.6	4.3	47.7	21.6	47.7	21.6	47.7	21.6			
	100	30.48	147' 2"	44.86	37.0	16.7	21.0	9.5	6.3	8.4	3.4	41.3	18.7	41.3	18.7	41.3	18.7			
	110	33.53	139' 9"	42.59	32.5	14.7	17.8	8.0	5.3	6.0	2.7	36.4	16.5	36.4	16.5	36.4	16.5			
	120	36.58	131' 1"	39.95	28.7	13.0	15.1	6.8	4.5	4.7	2.1	32.2	14.6	32.2	14.6	32.2	14.6			
	130	39.62	120' 10"	36.84	25.4	11.5	12.9	5.8	3.9	3.5	1.5	28.6	12.9	28.6	12.9	28.6	12.9			
	140	42.67	108' 8"	33.12	22.7	10.2	11.1	5.0	3.2	3.2	—	25.6	11.6	25.6	11.6	25.6	11.6			
	150	45.72	93' 7"	28.53	20.3	9.2	9.5	4.3	2.7	2.7	—	23.1	10.4	23.1	10.4	23.1	10.4			
160	48.77	73' 10"	22.52	18.3	8.3	8.2	3.7	2.3	2.3	—	20.7	9.3	20.7	9.3	20.7	9.3				
170	51.82	42' 2"	12.86	16.5	7.4	7.0	3.1	1.9	1.9	—	18.3	8.3	18.3	8.3	18.3	8.3				
180' (54.86 m)	30	9.14	185' 2"	56.44	134.8	61.1	134.8	61.1	38.1	46.0	20.8	134.8	61.1	134.8	61.1	134.8	61.1			
	35	10.67	184' 4"	56.19	133.1	60.3	120.1	54.4	27.3	38.7	17.5	133.1	60.3	133.1	60.3	133.1	60.3			
	40	12.19	183' 5"	55.90	119.4	54.1	98.7	44.7	23.0	33.5	15.1	125.8	57.0	125.8	57.0	125.8	57.0			
	50	15.24	181' 0"	55.18	93.2	42.2	66.6	30.2	17.2	25.3	11.4	98.6	44.7	98.6	44.7	98.6	44.7			
	60	18.29	178' 1"	54.27	74.3	33.7	48.8	22.1	13.6	19.5	8.8	78.1	35.4	78.1	35.4	78.1	35.4			
	70	21.34	174' 5"	53.17	60.8	27.5	37.7	17.1	10.9	15.0	6.8	65.7	29.8	65.7	29.8	65.7	29.8			
	80	24.38	164' 9"	51.85	50.4	22.8	30.4	13.7	8.9	11.7	5.3	55.1	24.9	55.1	24.9	55.1	24.9			
	90	27.43	165' 1"	50.31	42.6	19.3	24.9	11.2	7.4	9.2	4.1	47.0	21.3	47.0	21.3	47.0	21.3			
	100	30.48	159' 2"	48.51	36.7	16.6	20.7	9.3	6.2	7.2	3.2	40.7	18.4	40.7	18.4	40.7	18.4			

Refer to page 9. Capacities shown in thousand pounds and thousand kilograms.

(continued)

Length	HC-258 tapered boom				"A" upper & "A" bumper counterweights								"AB" upper & no bumper counterweights							
	Radius		Angle	Boom point height	On outriggers				On tires (static)				On outriggers only							
	Feet	Meters	Degrees	Feet	Over rear	Over side and 360° swing	Over rear	Over side	Pounds	Kilograms	Pounds	Kilograms	Pounds	Kilograms	Pounds	Kilograms	Pounds	Kilograms		
180' (54.86 m)	110	33.53	53.8	152' 4"	46.43	32.2	14.6	17.5	7.9	52	5.6	2.5	36.0	16.3	31.5	14.2	14.2	6.4		
	120	36.58	49.7	144' 5"	44.03	28.3	12.8	14.8	6.7	43	4.3	1.9	31.8	14.4	27.6	12.5	12.5	5.6		
	130	39.62	45.4	135' 4"	41.24	25.1	11.3	12.6	5.7	37	3.1	1.4	28.3	12.8	24.4	11.0	11.0	4.5		
	140	42.67	40.8	124' 8"	37.99	22.3	10.1	10.8	4.8	30	—	—	25.3	11.4	21.8	9.8	9.8	3.5		
	150	45.72	35.6	111' 11"	34.11	20.0	9.0	9.2	4.1	25	—	—	22.7	10.2	19.5	8.8	8.8	2.9		
	160	48.77	29.7	96' 4"	29.36	18.0	8.1	7.9	3.5	21	—	—	20.3	9.2	17.5	7.9	7.9	2.2		
	170	51.82	22.5	75' 11"	23.13	16.2	7.3	6.7	3.0	17	—	—	18.1	8.2	15.7	7.1	7.1	1.6		
	180	54.86	11.6	43' 3"	13.17	14.6	6.6	5.6	2.5	13	—	—	16.0	7.2	14.2	6.4	6.4	1.1		
	190'	57.91	—	—	—	—	—	—	—	—	—	—	—	—	—	—	—	—	—	
	200'	60.96	—	—	—	—	—	—	—	—	—	—	—	—	—	—	—	—	—	
190' (57.91 m)	32	9.75	81.4	195' 0"	59.43	120.5*	54.6*	120.5*	54.6*	30.4	42.4*	19.2*	120.5*	54.6*	120.5*	54.6*	54.6*	19.2*		
	35	10.67	80.5	194' 6"	59.28	119.4*	54.1*	119.4*	54.1*	27.2	38.3*	17.3*	119.4*	54.1*	119.4*	54.1*	54.1*	17.3*		
	40	12.19	79.0	193' 7"	59.01	114.5*	51.9*	98.6	44.7	22.9	33.1*	15.0*	114.5*	51.9*	114.5*	51.9*	51.9*	15.0*		
	50	15.24	75.9	191' 4"	58.33	92.8*	42.0*	66.5	30.1	17.1	24.9*	11.2*	92.8*	42.0*	92.8*	42.0*	42.0*	11.2*		
	60	18.29	72.8	188' 7"	57.47	74.2*	33.6*	48.6	22.0	13.4	19.2	8.7	74.2*	33.6*	74.2*	33.6*	33.6*	8.7		
	70	21.34	69.6	185' 2"	56.43	60.6	27.4	37.5	17.0	10.7	14.7	6.6	60.6	27.4	60.6	27.4	27.4	6.6		
	80	24.38	66.3	181' 1"	55.20	50.1	22.7	30.2	13.6	8.8	11.4	5.1	50.1	22.7	50.1	22.7	22.7	5.1		
	90	27.43	63.0	176' 4"	53.75	42.4	19.2	24.7	11.2	7.3	8.9	4.0	42.4	19.2	42.4	19.2	19.2	4.0		
	100	30.48	59.5	170' 10"	52.08	36.4	16.5	20.5	9.2	6.0	6.9	3.1	36.4	16.5	36.4	16.5	16.5	3.1		
	110	33.53	56.0	164' 7"	50.16	31.9	14.4	17.5	7.8	5.0	5.3	2.4	31.9	14.4	31.9	14.4	14.4	2.4		
120	36.58	52.2	157' 4"	47.95	28.0	12.7	14.6	6.6	4.2	4.0	1.8	28.0	12.7	28.0	12.7	12.7	1.8			
130	39.62	48.3	149' 0"	45.42	24.8	11.2	12.4	5.6	3.5	3.5	—	24.8	11.2	24.8	11.2	11.2	—			
140	42.67	44.1	139' 5"	42.50	22.1	10.0	10.5	4.7	2.9	2.9	—	22.1	10.0	22.1	10.0	10.0	—			
150	45.72	39.6	128' 3"	39.10	17.7	8.9	9.0	4.0	2.4	2.4	—	17.7	8.9	17.7	8.9	8.9	—			
160	48.77	34.6	115' 1"	35.07	15.9	8.0	7.6	3.4	1.9	1.9	—	15.9	8.0	15.9	8.0	8.0	—			
170	51.82	28.9	98' 11"	30.15	14.4	6.5	6.5	2.9	1.5	1.5	—	14.4	6.5	14.4	6.5	6.5	—			
180	54.86	21.9	77' 10"	23.73	13.0	5.8	5.4	2.4	0.8	0.8	—	13.0	5.8	13.0	5.8	5.8	—			
190	57.91	11.3	44' 3"	13.48	13.0	5.8	4.5	2.0	0.6	0.6	—	13.0	5.8	13.0	5.8	5.8	—			
200'	60.96	—	—	—	—	—	—	—	—	—	—	—	—	—	—	—	—	—		
200' (60.96 m)	33	10.06	81.6	204' 11"	62.47	105.9*	48.0*	105.9*	48.0*	29.1	40.5*	18.3*	105.9*	48.0*	105.9*	48.0*	48.0*	18.3*		
	35	10.67	81.0	204' 8"	62.37	105.9*	48.0*	105.9*	48.0*	27.0	37.8*	17.1*	105.9*	48.0*	105.9*	48.0*	48.0*	17.1*		
	40	12.19	79.5	203' 9"	62.11	104.2*	47.2*	98.4	44.6	22.8	32.6*	14.7*	104.2*	47.2*	104.2*	47.2*	47.2*	14.7*		
	50	15.24	76.6	201' 8"	61.47	92.4*	41.9*	66.3	30.0	16.9	24.4*	11.0*	92.4*	41.9*	92.4*	41.9*	41.9*	11.0*		
	60	18.29	73.6	199' 0"	60.66	74.0*	33.5*	48.4	21.9	13.3	18.8*	8.5*	74.0*	33.5*	74.0*	33.5*	33.5*	8.5*		
	70	21.34	70.6	195' 9"	59.67	60.3	27.6	37.3	16.9	10.6	14.4	6.5	60.3	27.6	60.3	27.6	27.6	6.5		
	80	24.38	67.6	192' 0"	58.51	49.9	23.3	30.0	13.6	8.6	11.1	5.0	49.9	23.3	49.9	23.3	23.3	5.0		
	90	27.43	64.4	187' 6"	57.15	42.1	19.0	24.5	11.1	7.1	8.6	3.9	42.1	19.0	42.1	19.0	19.0	3.9		
	100	30.48	61.2	182' 4"	55.59	36.4	16.5	20.3	9.2	5.9	6.6	2.9	36.4	16.5	36.4	16.5	16.5	2.9		
	110	33.53	57.9	176' 6"	53.79	31.7	14.3	17.0	7.7	4.9	4.9	1.6	31.7	14.3	31.7	14.3	14.3	1.6		
120	36.58	54.4	169' 9"	51.75	27.8	12.6	14.3	6.4	4.1	3.6	—	27.8	12.6	27.8	12.6	12.6	—			
130	39.62	50.8	162' 2"	49.42	24.5	11.1	12.1	5.4	3.4	3.4	—	24.5	11.1	24.5	11.1	11.1	—			
140	42.67	47.0	153' 5"	46.77	21.8	9.8	10.3	4.6	2.3	2.3	—	21.8	9.8	21.8	9.8	9.8	—			
150	45.72	43.0	143' 5"	43.72	19.4	8.7	8.7	3.9	1.8	1.8	—	19.4	8.7	19.4	8.7	8.7	—			
160	48.77	38.6	131' 10"	40.18	17.4	7.8	7.8	3.3	1.4	1.4	—	17.4	7.8	17.4	7.8	7.8	—			
170	51.82	33.7	118' 2"	36.01	15.6	7.0	6.2	2.8	1.4	1.4	—	15.6	7.0	15.6	7.0	7.0	—			
180	54.86	28.2	101' 6"	30.93	14.1	6.3	5.2	2.3	0.9	0.9	—	14.1	6.3	14.1	6.3	6.3	—			
190	57.91	21.3	79' 9"	24.31	12.7	5.7	4.2	1.9	0.8	0.8	—	12.7	5.7	12.7	5.7	5.7	—			
200	60.96	11.0	45' 2"	13.77	11.4	5.1	3.4	1.5	0.6	0.6	—	11.4	5.1	11.4	5.1	5.1	—			
210' (64.01 m)	34	10.36	81.7	214' 11"	65.50	96.2*	43.6*	96.2*	43.6*	31.0	43.6*	19.2*	96.2*	43.6*	96.2*	43.6*	43.6*	19.2*		
	35	10.67	81.4	214' 9"	65.46	95.4*	43.2*	95.4*	43.2*	27.5	38.3*	17.3*	95.4*	43.2*	95.4*	43.2*	43.2*	17.3*		
	40	12.19	80.0	213' 11"	65.21	94.7*	42.9*	94.7*	42.9*	24.9	34.1*	15.0*	94.7*	42.9*	94.7*	42.9*	42.9*	15.0*		
	50	15.24	77.3	211' 11"	64.60	89.9*	40.7*	66.2	30.0	16.9	24.4*	11.0*	89.9*	40.7*	89.9*	40.7*	40.7*	11.0*		
	60	18.29	74.4	209' 5"	63.83	73.6*	33.3*	48.2	21.8	13.3	18.8*	8.5*	73.6*	33.3*	73.6*	33.3*	33.3*	8.5*		
	70	21.34	71.6	206' 4"	62.90	60.0	27.2	37.0	16.7	10.6	14.4	6.5	60.0	27.2	60.0	27.2	27.2	6.5		
	80	24.38	68.7	202' 9"	61.79	49.6	22.4	29.8	13.5	8.6	11.1	5.0	49.6	22.4	49.6	22.4	22.4	5.0		
	90	27.43	65.7	198' 6"	60.51	41.8	18.9	24.2	10.9	6.3	6.3	—	41.8	18.9	41.8	18.9	18.9	—		
	100	30.48	62.7	193' 8"	59.04	36.2	16.4	20.0	9.0	5.0	5.0	—	36.2	16.4	36.2	16.4	16.4	—		
	110	33.53	59.6	188' 2"	57.36	31.4	14.2	16.7	7.5	3.6	3.6	—	31.4	14.2	31.4	14.2	14.2	—		
120	36.58	56.4	181' 11"	55.45	27.5	12.4	14.0	6.3	2.5	2.5	—	27.5	12.4	27.5	12.4	12.4	—			

(continued)

GENERAL INFORMATION ONLY

⊙ ⊙ ⊙ — Refer to page 9. Capacities shown in thousand pounds and thousand kilograms.

GENERAL INFORMATION ONLY



Length	HC-258 tapered boom										"A" upper & "A" bumper counterweights										"AB" upper & no bumper counterweights									
	Radius		Angle	Boom point height		On outriggers				On tires (static)				On outriggers only																
	Feet	meters		Feet	meters	Pounds	kilograms	Over rear	Over side and 360° swing	Pounds	kilograms	Over rear	Over side	Pounds	kilograms	Pounds	kilograms	Pounds	kilograms											
210' (64.01 m)	130	39.62	53.0	174' 10"	53.29	24.2	10.9	11.8	5.3	27.4*	12.4*	23.6	10.7	27.4*	12.4*	23.6	10.7	27.4*	12.4*											
	140	42.67	49.5	166' 10"	50.85	21.5	9.7	10.0	4.5	24.3*	11.0*	20.9	9.4	24.3*	11.0*	20.9	9.4	24.3*	11.0*											
	150	45.72	45.8	157' 9"	48.07	19.1	8.6	8.4	3.8	21.6*	9.7*	18.6	8.4	21.6*	9.7*	18.6	8.4	21.6*	9.7*											
	160	48.77	41.9	147' 4"	44.90	17.1	7.7	7.1	3.2	19.2*	8.7*	16.6	7.5	19.2*	8.7*	16.6	7.5	19.2*	8.7*											
	170	51.82	37.6	135' 3"	41.24	15.3	6.9	5.9	2.6	17.2*	7.8*	14.9	6.7	17.2*	7.8*	14.9	6.7	17.2*	7.8*											
	180	54.86	32.9	121' 2"	36.92	13.8	6.2	4.9	2.2	15.3*	6.9*	13.4	6.0	15.3*	6.9*	13.4	6.0	15.3*	6.9*											
	190	57.91	27.5	103' 11"	31.68	12.4	5.6	4.0	1.8	13.7*	6.2*	12.0	5.4	13.7*	6.2*	12.0	5.4	13.7*	6.2*											
	200	60.96	20.8	81' 7"	24.87	11.2	5.0	3.2	1.4	12.1*	5.4*	10.8	4.8	12.1*	5.4*	10.8	4.8	12.1*	5.4*											
	210	64.01	10.7	46' 2"	14.06	10.0	4.5	—	—	10.6*	4.8*	9.7	4.5	10.6*	4.8*	9.7	4.5	10.6*	4.8*											
	36	10.97	81.5	224' 9"	68.49	86.3*	39.1*	39.1*	86.3*	39.1*	86.3*	39.1*	86.3*	39.1*	86.3*	39.1*	86.3*	39.1*	86.3*	39.1*										
40	12.19	80.5	224' 1"	68.30	86.3*	39.1*	39.1*	86.3*	39.1*	86.3*	39.1*	86.3*	39.1*	86.3*	39.1*	86.3*	39.1*	86.3*	39.1*											
50	15.24	77.8	222' 2"	67.72	83.8*	38.0*	38.0*	83.8*	38.0*	83.8*	38.0*	83.8*	38.0*	83.8*	38.0*	83.8*	38.0*	83.8*	38.0*											
60	18.29	75.2	219' 9"	66.99	73.2*	33.2*	33.2*	73.2*	33.2*	73.2*	33.2*	73.2*	33.2*	73.2*	33.2*	73.2*	33.2*	73.2*	33.2*											
70	21.34	72.4	216' 10"	66.10	59.8	27.1	27.1	59.8	27.1	59.8	27.1	59.8	27.1	59.8	27.1	59.8	27.1	59.8	27.1											
80	24.38	69.7	213' 5"	65.05	49.3	22.3	22.3	49.3	22.3	49.3	22.3	49.3	22.3	49.3	22.3	49.3	22.3	49.3	22.3											
90	27.43	66.9	209' 5"	63.84	41.5	18.8	18.8	41.5	18.8	41.5	18.8	41.5	18.8	41.5	18.8	41.5	18.8	41.5	18.8											
100	30.48	64.0	204' 11"	62.45	35.9	16.2	16.2	35.9	16.2	35.9	16.2	35.9	16.2	35.9	16.2	35.9	16.2	35.9	16.2											
110	33.53	61.1	199' 8"	60.87	31.1	14.1	14.1	31.1	14.1	31.1	14.1	31.1	14.1	31.1	14.1	31.1	14.1	31.1	14.1											
120	36.58	58.1	193' 10"	59.08	27.2	12.3	12.3	27.2	12.3	27.2	12.3	27.2	12.3	27.2	12.3	27.2	12.3	27.2	12.3											
130	39.62	55.0	187' 3"	57.06	23.9	10.8	10.8	23.9	10.8	23.9	10.8	23.9	10.8	23.9	10.8	23.9	10.8	23.9	10.8											
140	42.67	51.7	179' 9"	54.79	21.2	9.6	9.6	21.2	9.6	21.2	9.6	21.2	9.6	21.2	9.6	21.2	9.6	21.2	9.6											
150	45.72	48.3	171' 4"	52.23	18.8	8.5	8.5	18.8	8.5	18.8	8.5	18.8	8.5	18.8	8.5	18.8	8.5	18.8	8.5											
160	48.77	44.7	161' 11"	49.34	16.8	7.6	7.6	16.8	7.6	16.8	7.6	16.8	7.6	16.8	7.6	16.8	7.6	16.8	7.6											
170	51.82	40.9	151' 1"	46.05	15.0	6.8	6.8	15.0	6.8	15.0	6.8	15.0	6.8	15.0	6.8	15.0	6.8	15.0	6.8											
180	54.86	36.7	138' 8"	42.26	13.5	6.1	6.1	13.5	6.1	13.5	6.1	13.5	6.1	13.5	6.1	13.5	6.1	13.5	6.1											
190	57.91	32.1	124' 1"	37.81	12.1	5.4	5.4	12.1	5.4	12.1	5.4	12.1	5.4	12.1	5.4	12.1	5.4	12.1	5.4											
200	60.96	26.8	106' 4"	32.42	10.9	4.9	4.9	10.9	4.9	10.9	4.9	10.9	4.9	10.9	4.9	10.9	4.9	10.9	4.9											
210	64.01	20.3	83' 5"	25.43	9.7	4.3	4.3	9.7	4.3	9.7	4.3	9.7	4.3	9.7	4.3	9.7	4.3	9.7	4.3											
220	67.06	10.5	47' 1"	14.35	8.7	3.9	3.9	8.7	3.9	8.7	3.9	8.7	3.9	8.7	3.9	8.7	3.9	8.7	3.9											
37	11.28	81.7	234' 8"	71.53	78.5*	35.6*	35.6*	78.5*	35.6*	78.5*	35.6*	78.5*	35.6*	78.5*	35.6*	78.5*	35.6*	78.5*	35.6*											
40	12.19	80.9	234' 3"	71.39	78.5*	35.6*	35.6*	78.5*	35.6*	78.5*	35.6*	78.5*	35.6*	78.5*	35.6*	78.5*	35.6*	78.5*	35.6*											
50	15.24	78.4	232' 5"	70.83	65.9	29.8	29.8	65.9	29.8	65.9	29.8	65.9	29.8	65.9	29.8	65.9	29.8	65.9	29.8											
60	18.29	75.8	230' 1"	70.13	68.8*	31.2*	31.2*	68.8*	31.2*	68.8*	31.2*	68.8*	31.2*	68.8*	31.2*	68.8*	31.2*	68.8*	31.2*											
70	21.34	73.2	227' 4"	69.29	59.5	26.9	26.9	59.5	26.9	59.5	26.9	59.5	26.9	59.5	26.9	59.5	26.9	59.5	26.9											
80	24.38	70.6	224' 1"	68.30	49.0	22.2	22.2	49.0	22.2	49.0	22.2	49.0	22.2	49.0	22.2	49.0	22.2	49.0	22.2											
90	27.43	68.0	220' 3"	67.14	41.2	18.6	18.6	41.2	18.6	41.2	18.6	41.2	18.6	41.2	18.6	41.2	18.6	41.2	18.6											
100	30.48	65.2	215' 11"	65.82	35.6	16.1	16.1	35.6	16.1	35.6	16.1	35.6	16.1	35.6	16.1	35.6	16.1	35.6	16.1											
110	33.53	62.5	211' 1"	64.33	30.8	13.9	13.9	30.8	13.9	30.8	13.9	30.8	13.9	30.8	13.9	30.8	13.9	30.8	13.9											
120	36.58	59.6	205' 6"	62.64	26.9	12.2	12.2	26.9	12.2	26.9	12.2	26.9	12.2	26.9	12.2	26.9	12.2	26.9	12.2											
130	39.62	56.7	199' 4"	60.75	23.6	10.7	10.7	23.6	10.7	23.6	10.7	23.6	10.7	23.6	10.7	23.6	10.7	23.6	10.7											
140	42.67	53.6	192' 4"	58.62	20.9	9.4	9.4	20.9	9.4	20.9	9.4	20.9	9.4	20.9	9.4	20.9	9.4	20.9	9.4											
150	45.72	50.5	184' 7"	56.25	18.5	8.3	8.3	18.5	8.3	18.5	8.3	18.5	8.3	18.5	8.3	18.5	8.3	18.5	8.3											
160	48.77	47.2	175' 10"	53.58	16.5	7.4	7.4	16.5	7.4	16.5	7.4	16.5	7.4	16.5	7.4	16.5	7.4	16.5	7.4											
170	51.82	43.7	165' 11"	50.58	14.7	6.6	6.6	14.7	6.6	14.7	6.6	14.7	6.6	14.7	6.6	14.7	6.6	14.7	6.6											
180	54.86	39.9	154' 9"	47.17	13.2	5.9	5.9	13.2	5.9	13.2	5.9	13.2	5.9	13.2	5.9	13.2	5.9	13.2	5.9											
190	57.91	35.9	141' 11"	43.26	11.8	5.3	5.3	11.8	5.3	11.8	5.3	11.8	5.3	11.8	5.3	11.8	5.3	11.8	5.3											
200	60.96	31.4	126' 11"	38.68	10.5	4.7	4.7	10.5	4.7	10.5	4.7	10.5	4.7	10.5	4.7	10.5	4.7	10.5	4.7											
210	64.01	26.2	108' 9"	33.73	9.4	4.2	4.2	9.4	4.2	9.4	4.2	9.4	4.2	9.4	4.2	9.4	4.2	9.4	4.2											
220	67.06	19.8	85' 2"	25.97	8.4	3.8	3.8	8.4	3.8	8.4	3.8	8.4	3.8	8.4	3.8	8.4	3.8	8.4	3.8											
230	70.10	10.2	48' 0"	14.62	7.5	3.4	3.4	7.5	3.4	7.5	3.4	7.5	3.4	7.5	3.4	7.5	3.4	7.5	3.4											
39	11.89	81.5	244' 6"	74.52	68.9*	31.2*	31.2*	68.9*	31.2*	68.9*	31.2*	68.9*	31.2*	68.9*	31.2*	68.9*	31.2*	68.9*	31.2*											
40	12.19	81.3	244' 4"	74.47	68.9*	31.2*	31.2*	68.9*	31.2*	68.9*	31.2*	68.9*	31.2*	68.9*	31.2*	68.9*	31.2*	68.9*	31.2*											
50	15.24	78.9	242' 7"	73.94	67.8*	30.7*	30.7*	67.8*	30.7*	67.8*	30.7*	67.8*	30.7*	67.8*	30.7*	67.8*	30.7*	67.8*	30.7*											
60	18.29	76.4	240' 5"	73.27	65.2	29.5	29.5	65.2	29.5	65.2	29.5	65.2	29.5	65.2	29.5	65.2	29.5	65.2	29.5											
70	21.34	74.0	237' 9"	72.47	58.2	26.0	26.0	58.2	26.0	58.2	26.0	58.2	26.0	58.2	26.0	58.2	26.0	58.2	26.0											
80	24.38	71.5	234' 8"	71.52	48.7	22.2	22.2	48.7	22.2	48.7	22.2	48.7	22.2	48.7	22.2	48.7	22.2	48.7	22.2											
90	27.43	68.9	231' 0"	70.42	40.8	18.5	18.5	40.8	18.5	40.8	18.5	40.8	18.5	40.8	18.5	40.8	18.5	40.8	18.5											

⊙ ⊙ — Refer to page 9. Capacities shown in thousand pounds and thousand kilograms.

(continued)

Length	HC-258 tapered boom				"A" upper & "A" bumper counterweights				"AB" upper & no bumper counterweights					
	Radius		Angle	Boom point height	On outriggers		On tires (static)		On outriggers		On tires (static)		On outriggers	
	Feet	meters			Pounds	kilograms	Pounds	kilograms	Pounds	kilograms	Pounds	kilograms	Pounds	kilograms
240' (73.15 m)	100	30.48	66.3	226' 11"	69.16	35.3	160	19.2	87	38.7	17.5	34.4	15.6	
	110	33.53	63.7	222' 3"	67.74	30.4	137	15.9	72	33.6	15.2	29.7	13.4	
	120	36.58	61.0	217' 0"	66.15	26.5	120	13.2	59	30.3	13.6	25.8	11.7	
	130	39.62	58.2	211' 2"	64.36	23.3	105	10.9	49	26.5	12.0	22.6	10.2	
	140	42.67	55.4	204' 7"	62.37	20.5	92	9.1	41	23.5	10.6	19.9	9.0	
	150	45.72	52.4	197' 4"	60.15	18.2	82	7.5	34	20.9	9.4	17.6	7.9	
	160	48.77	49.4	189' 2"	57.67	16.1	73	6.1	27	18.7	8.4	15.6	6.3	
	170	51.82	46.1	180' 1"	54.90	14.3	64	5.0	22	16.7	7.5	13.9	5.6	
	180	54.86	42.7	169' 11"	51.79	12.8	58	3.9	17	15.0	6.8	12.4	4.9	
	190	57.91	39.1	158' 4"	48.27	11.4	51	3.0	13	13.5	6.1	11.0	4.4	
	200	60.96	35.1	145' 2"	44.23	10.2	46	—	—	12.2	5.5	9.8	3.9	
	210	64.01	30.7	129' 8"	39.53	9.0	40	—	—	11.0	4.9	8.7	3.4	
	220	67.06	25.7	111' 0"	33.84	8.0	36	—	—	9.8	4.4	7.7	3.0	
	230	70.10	19.4	86' 11"	26.49	7.1	32	—	—	8.7	3.9	6.8	2.7	
	240	73.15	10.0	48' 10"	14.89	6.3	28	—	—	7.4	3.3	6.0	2.2	
	250' (76.20 m)	40	12.19	81.6	254' 5"	77.56	63.7	28.8	28.8	28.8	63.7	28.8	63.7	28.8
		50	15.24	79.3	252' 9"	77.04	62.2	28.2	28.2	28.2	62.2	28.2	62.2	28.2
		60	18.29	77.0	250' 8"	76.41	59.8	27.1	27.1	27.1	59.8	27.1	59.8	27.1
		70	21.34	74.6	248' 2"	75.63	54.6	24.7	24.7	24.7	54.6	24.7	54.6	24.7
		80	24.38	72.2	245' 2"	74.73	48.4	21.9	21.9	21.9	49.9	22.6	47.3	21.4
90		27.43	69.8	241' 9"	73.68	40.5	18.3	18.3	18.3	45.4	20.5	39.6	17.9	
100		30.48	67.3	237' 10"	72.48	35.0	15.8	15.8	15.8	38.8	17.5	34.1	15.4	
110		33.53	64.8	233' 4"	71.13	30.1	13.6	13.6	13.6	33.2	15.0	29.4	13.3	
120		36.58	62.3	228' 5"	69.61	26.2	11.8	11.8	11.8	29.7	13.4	25.3	11.5	
130		39.62	59.6	222' 10"	67.92	22.9	10.3	10.3	10.3	26.1	11.8	22.3	10.1	
140		42.67	57.0	216' 8"	66.04	20.2	9.1	9.1	9.1	23.1	10.4	19.6	8.8	
150		45.72	54.2	209' 10"	63.95	17.8	8.0	8.0	8.0	20.6	9.3	17.3	7.8	
160		48.77	51.3	202' 2"	61.63	15.8	7.1	7.1	7.1	18.4	8.3	15.3	6.9	
170		51.82	48.3	193' 9"	59.05	14.0	6.3	6.3	6.3	16.4	7.4	13.6	6.1	
180		54.86	45.1	184' 4"	56.18	12.5	5.6	5.6	5.6	14.7	6.6	12.0	5.4	
190		57.91	41.8	173' 9"	52.96	11.1	5.0	5.0	5.0	13.2	5.9	10.7	4.8	
200		60.96	38.2	161' 10"	49.34	9.8	4.4	4.4	4.4	11.8	5.3	9.4	4.2	
210		64.01	34.4	148' 3"	45.19	8.7	3.9	3.9	3.9	10.6	4.8	8.4	3.8	
220		67.06	30.1	132' 5"	40.35	7.7	3.4	3.4	3.4	9.5	4.3	7.4	3.3	
230		70.10	25.1	113' 3"	34.52	6.8	3.0	3.0	3.0	8.5	3.8	6.5	2.9	
240	73.15	19.0	88' 7"	27.01	6.0	2.7	2.7	2.7	7.6	3.4	5.7	2.5		
250	76.20	9.8	49' 9"	15.16	5.2	2.3	2.3	2.3	6.8	3.0	4.9	2.2		
260' (79.25 m)	42	12.80	81.5	264' 3"	80.55	58.2	26.3	26.3	26.3	58.2	26.3	58.2	26.3	
	50	15.24	79.7	262' 11"	80.14	57.3	25.9	25.9	25.9	57.3	25.9	57.3	25.9	
	60	18.29	77.5	260' 11"	79.53	54.6	24.7	24.7	24.7	54.6	24.7	54.6	24.7	
	70	21.34	75.2	258' 6"	78.79	50.3	22.8	22.8	22.8	50.3	22.8	50.3	22.8	
	80	24.38	72.9	255' 8"	77.92	46.4	21.0	21.0	21.0	46.4	21.0	46.4	21.0	
	90	27.43	70.6	252' 4"	76.92	40.2	18.2	18.2	18.2	42.0	19.0	39.3	17.8	
	100	30.48	68.3	248' 7"	75.77	34.7	15.7	15.7	15.7	35.8	16.2	33.8	15.3	
	110	33.53	65.9	244' 4"	74.48	29.8	13.5	13.5	13.5	33.0	14.9	29.1	13.1	
	120	36.58	63.4	239' 7"	73.04	25.9	11.7	11.7	11.7	29.4	13.3	25.2	11.4	
	130	39.62	60.9	234' 4"	71.43	22.6	10.2	10.2	10.2	25.8	11.7	22.0	9.9	
	140	42.67	58.4	228' 6"	69.64	19.9	9.0	9.0	9.0	23.2	10.3	19.3	8.7	
	150	45.72	55.7	222' 0"	67.67	17.5	7.9	7.9	7.9	20.3	9.2	17.0	7.7	
	160	48.77	53.0	214' 10"	65.49	15.5	7.0	7.0	7.0	18.0	8.1	15.0	6.8	
	170	51.82	50.2	206' 11"	63.07	13.7	6.2	6.2	6.2	16.1	7.3	13.2	6.5	
	180	54.86	47.3	198' 2"	60.40	12.1	5.4	5.4	5.4	14.4	6.5	11.7	5.3	
	190	57.91	44.2	188' 5"	57.43	10.7	4.8	4.8	4.8	12.9	5.8	10.3	4.6	
	200	60.96	41.0	177' 7"	54.12	9.5	4.3	4.3	4.3	11.5	5.2	9.1	4.1	

Not applicable

⊙ ⊙ ⊙ — Refer to page 9. Capacities shown in thousand pounds and thousand kilograms.

(continued)

GENERAL INFORMATION ONLY

HC-258 tapered boom				"A" upper & "A" bumper counterweights				"AB" upper & no bumper counterweights						
Length	Radius		Boom point height	On outriggers		On tires (static)		On outriggers		On outriggers only				
	Feet	Meters		Feet	Pounds	Kilograms	Pounds	Kilograms	Pounds	Kilograms	Pounds	Kilograms		
260' (79.25 m)	210	64.01	165' 4"	50.38	8.4	3.8	—	—	—	10.3	4.6	8.0	3.6	
	220	67.06	151' 4"	46.12	7.4	3.3	—	—	—	9.2	4.1	7.0	3.1	
	230	70.10	135' 1"	41.16	6.5	2.9	—	—	—	8.2	3.7	6.1	2.7	
	240	73.15	115' 6"	35.20	5.6	2.5	—	—	—	7.3	3.5	5.3	2.4	
	250	76.20	90' 3"	27.51	4.9	2.2	—	—	—	6.5	2.9	4.6	2.0	
	260	79.25	50' 7"	15.42	4.2	1.9	—	—	—	5.7	2.5	3.9	1.7	
	270' (82.30 m)	43	13.11	274' 3"	83.58	53.9*	24.4*	53.9*	24.4*	53.9*	24.4*	24.4*	53.9*	24.4*
		50	15.24	273' 1"	83.24	53.1*	24.0*	53.1*	24.0*	53.1*	24.0*	24.0*	53.1*	24.0*
		60	18.29	271' 2"	82.65	47.0*	21.3*	47.0*	21.3*	47.0*	21.3*	21.3*	47.0*	21.3*
		70	21.34	268' 10"	81.94	46.6*	21.1*	36.2	16.4	46.6*	21.1*	21.1*	46.6*	21.1*
		80	24.38	266' 1"	81.10	42.6*	19.3*	28.4	12.8	42.6*	19.3*	19.3*	42.6*	19.3*
		90	27.43	262' 11"	80.14	38.9*	17.6*	22.7	10.2	38.9*	17.6*	17.6*	38.9*	17.6*
100		30.48	259' 4"	79.04	32.9*	14.9*	18.4	8.3	32.9*	14.9*	14.9*	32.9*	14.9*	
110		33.53	255' 3"	77.81	29.5	13.3	15.0	6.8	30.3*	13.7*	13.7*	28.8*	13.0*	
120		36.58	250' 9"	76.43	25.6	11.6	12.3	5.8	27.9*	12.6*	12.6*	24.9	11.2	
130		39.62	245' 9"	74.90	22.3	10.1	10.1	4.5	25.5	11.5	11.5	21.7	9.8	
140		42.67	240' 2"	73.20	19.6	8.8	8.2	3.7	22.5	10.2	10.2	19.0	8.6	
150		45.72	234' 2"	71.33	17.2	7.8	6.6	2.9	19.9	9.0	9.0	16.7	7.5	
160	48.77	227' 3"	69.26	15.2	6.8	5.2	2.3	17.7	8.0	8.0	14.7	6.6		
170	51.82	219' 9"	66.99	13.4	6.0	4.0	1.8	15.8	7.1	7.1	12.9	5.8		
180	54.86	211' 7"	64.48	11.8	5.3	3.0	1.3	14.1	6.3	6.3	11.4	5.1		
190	57.91	202' 6"	61.72	10.4	4.7	2.2	1.0	12.5	5.6	5.6	10.0	4.5		
200	60.96	192' 5"	58.66	9.2	4.1	1.6	0.8	11.2	5.0	5.0	8.8	3.9		
210	64.01	181' 3"	55.24	8.1	3.6	1.1	0.7	10.0	4.5	4.5	7.7	3.4		
220	67.06	168' 8"	51.40	7.1	3.2	0.9	0.6	8.9	4.0	4.0	6.7	3.0		
230	70.10	154' 4"	47.03	6.1	2.7	0.7	0.5	7.9	3.5	3.5	5.8	2.6		
240	73.15	137' 8"	41.96	5.3	2.4	0.6	0.4	7.0	3.1	3.1	5.0	2.2		
250	76.20	117' 8"	35.85	4.5	2.0	0.5	0.3	6.1	2.7	2.7	4.2	1.9		
260	79.25	91' 11"	28.01	3.8	1.7	0.4	0.2	5.4	2.4	2.4	3.6	1.6		
270	82.30	51' 5"	15.67	3.1	1.4	0.3	0.1	4.7	2.1	2.1	3.1	1.4		
280' (85.34 m)	45	13.72	284' 0"	86.57	49.4*	22.4*	49.4*	22.4*	49.4*	22.4*	22.4*	49.4*	22.4*	
	50	15.24	283' 3"	86.33	48.7*	22.0*	48.7*	22.0*	48.7*	22.0*	22.0*	48.7*	22.0*	
	60	18.29	281' 5"	85.76	46.8*	21.2*	46.8*	21.2*	46.8*	21.2*	21.2*	46.8*	21.2*	
	70	21.34	279' 2"	85.08	42.7*	19.3*	35.9	16.2	42.7*	19.3*	19.3*	42.7*	19.3*	
	80	24.38	276' 6"	84.28	38.7*	17.5*	28.1	12.7	38.7*	17.5*	17.5*	38.7*	17.5*	
	90	27.43	273' 6"	83.35	31.9*	14.4*	22.4	10.1	31.9*	14.4*	14.4*	31.9*	14.4*	
	100	30.48	270' 0"	82.30	28.4*	12.8*	18.1	8.2	28.4*	12.8*	12.8*	28.4*	12.8*	
	110	33.53	266' 1"	81.11	25.5*	11.5*	14.7	6.6	25.5*	11.5*	11.5*	25.5*	11.5*	
	120	36.58	261' 9"	79.79	23.1*	10.4*	12.0	5.4	23.1*	10.4*	10.4*	23.1*	10.4*	
	130	39.62	257' 0"	78.33	21.1*	9.5*	9.8	4.4	21.1*	9.5*	9.5*	21.1*	9.5*	
	140	42.67	251' 8"	76.71	19.2	8.7	7.9	3.5	19.3*	8.7*	8.7*	18.7	8.4	
	150	45.72	245' 10"	74.93	16.9	7.6	6.3	2.8	17.6*	7.9*	7.9*	16.3	7.3	
160	48.77	239' 5"	72.97	14.8	6.7	4.9	2.2	16.2*	7.3*	7.3*	14.3	6.4		
170	51.82	232' 4"	70.82	13.0	5.8	3.7	1.6	14.7*	6.6*	6.6*	12.6	5.7		
180	54.86	224' 7"	68.46	11.5	5.2	2.8	1.1	13.4*	6.0*	6.0*	11.0	4.9		
190	57.91	216' 1"	65.87	10.1	4.5	2.1	0.8	12.1*	5.4*	5.4*	9.7	4.3		
200	60.96	206' 9"	63.01	8.8	3.9	1.5	0.6	10.8	4.8	4.8	8.4	3.8		
210	64.01	196' 5"	59.86	7.7	3.4	1.1	0.5	9.6	4.3	4.3	7.3	3.3		
220	67.06	184' 10"	56.35	6.7	3.0	0.9	0.4	8.5	3.8	3.8	6.4	2.9		
230	70.10	171' 11"	52.41	5.8	2.6	0.7	0.3	7.5	3.4	3.4	5.5	2.4		
240	73.15	157' 3"	47.93	5.0	2.2	0.6	0.2	6.6	2.9	2.9	4.6	2.0		
250	76.20	140' 2"	42.74	4.2	1.9	0.5	0.1	5.8	2.6	2.6	3.9	1.7		
260	79.25	119' 9"	36.50	3.4	1.5	0.4	0.1	5.0	2.2	2.2	3.2	1.4		
270	82.30	93' 6"	28.50	—	—	—	—	3.9	1.7	1.7	—	—		

Not applicable

⊙ ⊙ ⊙ — Refer to page 9. Capacities shown in thousand pounds and thousand kilograms.

GENERAL INFORMATION ONLY

(continued)

HC-258 tapered boom				"A" upper & "A" bumper counterweights				"AB" upper & no bumper counterweights							
Length	Radius		Boom point height		On outriggers				On tires (static)						
	Feet	meters	Feet	meters	Over rear		Over side and 360° swing		Over rear		Over side		Over side and 360° swing		
					Pounds	kilograms	Pounds	kilograms	Pounds	kilograms	Pounds	kilograms	Pounds	kilograms	
290' (88.39 m)	46	14.02	294' 0"	89.61	45.9'	20.8'	45.9'	20.8'	45.9'	20.8'	45.9'	20.8'	45.9'	20.8'	
	50	15.24	293' 5"	89.42	45.2'	20.5'	45.2'	20.5'	45.2'	20.5'	45.2'	20.5'	45.2'	20.5'	
	60	18.29	291' 7"	88.87	43.1'	19.5'	43.1'	19.5'	43.1'	19.5'	43.1'	19.5'	43.1'	19.5'	
	70	21.34	289' 5"	88.21	39.4'	17.8'	39.4'	17.8'	39.4'	17.8'	39.4'	17.8'	39.4'	17.8'	
	80	24.38	286' 11"	87.44	32.9'	14.9'	32.9'	14.9'	32.9'	14.9'	32.9'	14.9'	32.9'	14.9'	
	90	27.43	283' 11"	86.55	30.1'	13.6'	30.1'	13.6'	30.1'	13.6'	30.1'	13.6'	30.1'	13.6'	
	100	30.48	280' 8"	85.54	27.4'	12.4'	27.4'	12.4'	27.4'	12.4'	27.4'	12.4'	27.4'	12.4'	
	110	33.53	276' 11"	84.40	25.3'	11.4'	25.3'	11.4'	25.3'	11.4'	25.3'	11.4'	25.3'	11.4'	
	120	36.58	272' 9"	83.13	23.3'	10.5'	23.3'	10.5'	23.3'	10.5'	23.3'	10.5'	23.3'	10.5'	
	130	39.62	268' 2"	81.73	21.5'	9.7'	21.5'	9.7'	21.5'	9.7'	21.5'	9.7'	21.5'	9.7'	
	140	42.67	263' 1"	80.18	18.9	8.5	18.9	8.5	18.9	8.5	18.9	8.5	18.9	8.5	
	150	45.72	257' 6"	78.48	16.5	7.4	16.5	7.4	16.5	7.4	16.5	7.4	16.5	7.4	
	160	48.77	251' 4"	76.61	14.5	6.5	14.5	6.5	14.5	6.5	14.5	6.5	14.5	6.5	
	170	51.82	244' 8"	74.57	12.7	5.7	12.7	5.7	12.7	5.7	12.7	5.7	12.7	5.7	
	180	54.86	237' 4"	72.34	11.1	5.0	11.1	5.0	11.1	5.0	11.1	5.0	11.1	5.0	
	190	57.91	229' 4"	69.89	9.7	4.3	9.7	4.3	9.7	4.3	9.7	4.3	9.7	4.3	
	200	60.96	220' 6"	67.22	8.5	3.8	8.5	3.8	8.5	3.8	8.5	3.8	8.5	3.8	
	210	64.01	210' 11"	64.28	7.4	3.3	7.4	3.3	7.4	3.3	7.4	3.3	7.4	3.3	
	220	67.06	200' 3"	61.03	6.4	2.9	6.4	2.9	6.4	2.9	6.4	2.9	6.4	2.9	
	230	70.10	188' 5"	57.43	5.5	2.4	5.5	2.4	5.5	2.4	5.5	2.4	5.5	2.4	
	240	73.15	175' 2"	53.39	4.6	2.0	4.6	2.0	4.6	2.0	4.6	2.0	4.6	2.0	
	250	76.20	160' 2"	48.81	3.7	1.6	3.7	1.6	3.7	1.6	3.7	1.6	3.7	1.6	
	260	79.25	142' 9"	43.50	3.0	1.3	3.0	1.3	3.0	1.3	3.0	1.3	3.0	1.3	
	270	82.30	121' 10"	37.14	—	—	—	—	—	—	—	—	—	—	
	280	85.34	95' 1"	28.97	—	—	—	—	—	—	—	—	—	—	
	300' (91.44 m)	47	14.33	303' 11"	92.65	—	—	—	—	—	—	—	—	—	—
		50	15.24	303' 6"	92.51	—	—	—	—	—	—	—	—	—	—
		60	18.29	301' 9"	91.98	—	—	—	—	—	—	—	—	—	—
70		21.34	299' 8"	91.34	—	—	—	—	—	—	—	—	—	—	
80		24.38	297' 3"	90.60	—	—	—	—	—	—	—	—	—	—	
90		27.43	294' 5"	89.74	—	—	—	—	—	—	—	—	—	—	
100		30.48	291' 3"	88.76	—	—	—	—	—	—	—	—	—	—	
110		33.53	287' 7"	87.67	—	—	—	—	—	—	—	—	—	—	
120		36.58	283' 8"	86.45	—	—	—	—	—	—	—	—	—	—	
130		39.62	279' 2"	85.10	—	—	—	—	—	—	—	—	—	—	
140		42.67	274' 4"	83.62	—	—	—	—	—	—	—	—	—	—	
150		45.72	269' 0"	81.99	—	—	—	—	—	—	—	—	—	—	
160	48.77	263' 2"	80.21	—	—	—	—	—	—	—	—	—	—		
170	51.82	256' 9"	78.26	—	—	—	—	—	—	—	—	—	—		
180	54.86	249' 10"	76.14	—	—	—	—	—	—	—	—	—	—		
190	57.91	242' 3"	73.83	—	—	—	—	—	—	—	—	—	—		
200	60.96	233' 11"	71.30	—	—	—	—	—	—	—	—	—	—		
210	64.01	224' 10"	68.54	—	—	—	—	—	—	—	—	—	—		
220	67.06	214' 11"	65.51	—	—	—	—	—	—	—	—	—	—		
230	70.10	204' 0"	62.18	—	—	—	—	—	—	—	—	—	—		
240	73.15	191' 11"	58.49	—	—	—	—	—	—	—	—	—	—		
250	76.20	178' 4"	54.35	—	—	—	—	—	—	—	—	—	—		
260	79.25	162' 11"	49.67	—	—	—	—	—	—	—	—	—	—		
270	82.30	145' 2"	44.25	—	—	—	—	—	—	—	—	—	—		
280	85.34	123' 11"	37.76	—	—	—	—	—	—	—	—	—	—		
310' (94.49 m)	49	14.94	313' 9"	95.64	—	—	—	—	—	—	—	—	—	—	
	50	15.24	313' 7"	95.59	—	—	—	—	—	—	—	—	—	—	
	60	18.29	311' 11"	95.08	—	—	—	—	—	—	—	—	—	—	
	70	21.34	309' 11"	94.46	—	—	—	—	—	—	—	—	—	—	
	80	24.38	307' 7"	93.74	—	—	—	—	—	—	—	—	—	—	
	90	27.43	304' 10"	92.91	—	—	—	—	—	—	—	—	—	—	
100	30.48	301' 9"	91.97	—	—	—	—	—	—	—	—	—	—		

① ② ③ — Refer to page 9. Capacities shown in thousand pounds and thousand kilograms.

GENERAL INFORMATION ONLY

(continued)

Length	HC-258 tapered boom			"A" upper & "A" bumper counterweights						"AB" upper & no bumper counterweights						
				On outriggers			On tires (static)			On outriggers only						
	Radius	Angle	Boom point height	Over rear	Over side and 360° swing	Over rear	Over side	Over rear	Over side	Over rear	Over side and 360° swing	Over rear	Over side	Over rear	Over side and 360° swing	
Feet	meters	Degrees	Feet	meters	Pounds	Kilograms	Pounds	Kilograms	Pounds	Kilograms	Pounds	Kilograms	Pounds	Kilograms	Pounds	Kilograms
110	33.53	69.9	298' 4"	90.92							22.1'	10 0'	22.1'	10 0'	22.1'	10 0'
120	36.58	68.0	294' 5"	89.75							20.0'	9 0'	20.0'	9 0'	20.0'	9 0'
130	39.62	65.9	290' 2"	88.45							18.5'	8 3'	18.5'	8 3'	18.5'	8 3'
140	42.67	63.9	285' 6"	87.02							17.0'	7 7'	17.0'	7 7'	17.0'	7 7'
150	45.72	61.8	280' 5"	85.46							15.7'	7 1'	15.7'	7 1'	15.3	6 9
160	48.77	59.7	274' 10"	83.76							14.5'	6 5'	14.5'	6 5'	13.3	6 0
170	51.82	57.5	268' 8"	81.90							13.3'	6 0'	13.3'	6 0'	11.6	5 2
180	54.86	55.3	262' 1"	79.88							12.3'	5 5'	12.3'	5 5'	10.0	4 5
190	57.91	53.1	254' 10"	77.68							11.2	5 0	11.2	5 0	8.6	3 9
200	60.96	50.7	247' 0"	75.29							9.8	4 4	9.8	4 4	7.4	3 3
210	64.01	48.3	238' 5"	72.68							8.6	3 9	8.6	3 9	6.3	2 8
220	67.06	45.7	229' 2"	69.84							7.5	3 4	7.5	3 4	5.3	2 4
230	70.10	43.1	218' 11"	66.73							6.5	2 9	6.5	2 9	4.4	1 9
240	73.15	40.3	207' 9"	63.31							5.6	2 5	5.6	2 5	3.6	1 6
250	76.20	37.4	195' 4"	59.53							4.7	2 1	4.7	2 1	—	—
260	79.25	34.2	181' 5"	55.30							4.0	1 8	4.0	1 8	—	—
270	82.30	30.8	165' 9"	50.52							3.3	1 4	3.3	1 4	—	—

Capacities shown in thousand pounds and thousand kilograms.

- ⊕ Applicable only to machines with booms 120' (36.58 m) through 290' (88.39 m) long — without jib. "AB" upper and no bumper counterweights are applicable for booms 120' (36.58 m) through 310' (94.49 m) long — without jib and 120' (36.58 m) through 250' (76.20 m) long — with jib. "AB" upper and "A" bumper counterweights are required for booms 260' (79.25 m) through 300' (91.44 m) long — with jib.

Notes — lifting crane capacities; tubular boom with tapered top section.

- The capacities included in this chart are the maximum allowable, and are based on machine standing level on firm supporting surface under ideal job conditions. Capacities are based on 85% of minimum tipping loads unless marked with an asterisk (*).
 - a. Asterisk indicates capacities are based on factors other than those which would cause a tipping condition.
- Capacities are based on freely suspended loads and make no allowance for such factors as the effect of wind, supporting surface conditions, inflation of tires, and operating speeds. Operator must reduce load ratings accordingly to take such conditions into account. Deduction from rated capacities must be made for weight of jib, hook block, ball/hook, sling, spreader bar, or other suspended gear.
- Boom midpoint suspension pendants required for boom lengths exceeding 230' (70.10 m).
- Main boom length with "AB" upper and no bumper counterweight must not exceed 310' (94.49 m).

- ⊕ Measured vertically from center of boom head sheaves to ground with machine standing on tires.

- ⊕ Capacities for 360° swing applicable only when front center jack and front and rear outriggers are set in proper working position.

- For lifting 200,000 lbs. (90,720 kg), 6-part load hoist line (1½" — 29 mm dia., type "N" wire rope) is required. Check parts of line required for all capacities.
- Jib cannot be used on boom longer than 300' (91.44 m).
- Refer to charts page 1 when rigging machine with boom and boom plus jib.
- Machine equipped with "AB" upper counterweight — do not swing over side until outriggers have been set.
- Boom live mast must be used for all capacities on this chart.
- Boom live mast may be used as short boom for machine assembly/disassembly only — it is not to be used for general lift crane service.
 - a. Maximum lifting capacity of mast is 70,000 lbs. (31 753 kg) from 12' (3.66 m) to 33' (10.06 m) maximum radius with machine on outriggers (front and rear) with "A" upper cwt.
 - b. Minimum 3-part load hoist line (1½" — 29 mm dia., type "N" wire rope) — off rear main operating drum only — required to lift 70,000 lbs. (31 752 kg) load.

- Least stable position is over side.
- When handling loads on main load hoist line with jib mounted on boom, reduce rated boom capacities as follows to compensate for jib weights —
 - 30' (9.14 m) jib — 2,600 lbs. (1 179 kg)
 - 50' (15.24 m) jib — 3,300 lbs. (1 496 kg)
 - 70' (21.34 m) jib — 4,000 lbs. (1 814 kg)
- Boom must be assembled per boom make-up label #28P674.
- When making lifts on outriggers, machine must be level and supported on fully extended and set outriggers with tires free of supporting surface.

- Capacities apply only to the machine as originally manufactured and normally equipped by FMC Corporation, Cable Crane and Excavator Division.

GENERAL INFORMATION ONLY

HC-258 boom/jib working ranges — tapered boom

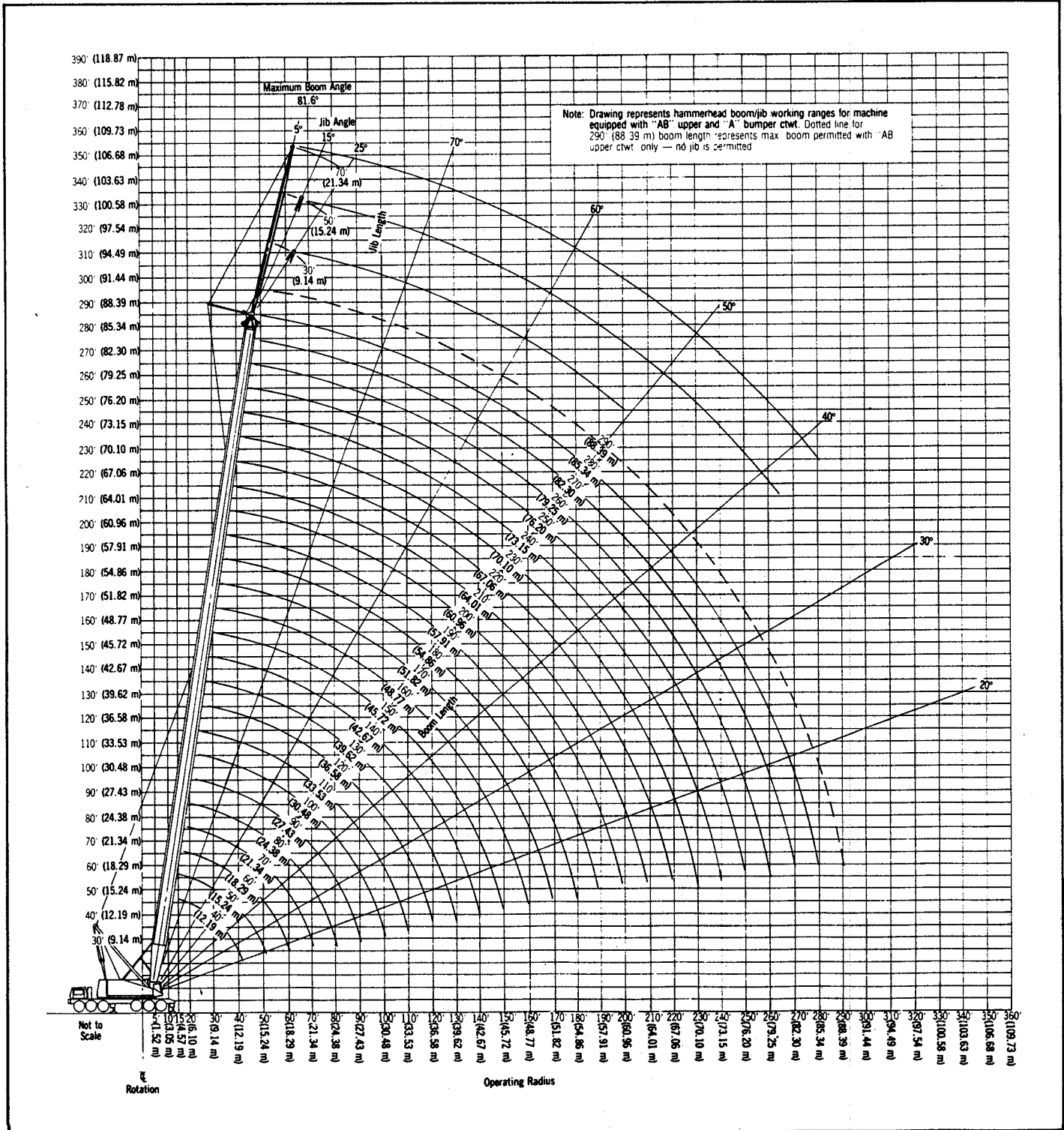
Boom — tubular; 80" (2.03 m) wide, 68" (1.73 m) deep with 45' (13.72 m) long tapered top section, 1½" (38 mm) diameter boom pendants, boom live mast, and boom midpoint suspension pendants as required.

Jib — tubular; 32" (0.81 m) wide 24" (0.61 m) deep.

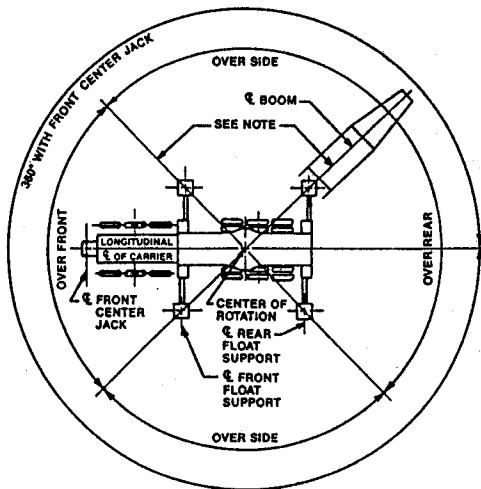
Counterweights — Refer to charts page 1.

Mounting — rubber tire mobile base: FMC 12 x 6 drive, 288" (7.32 m) wheelbase, 11' 10" (3.61 m) wide.

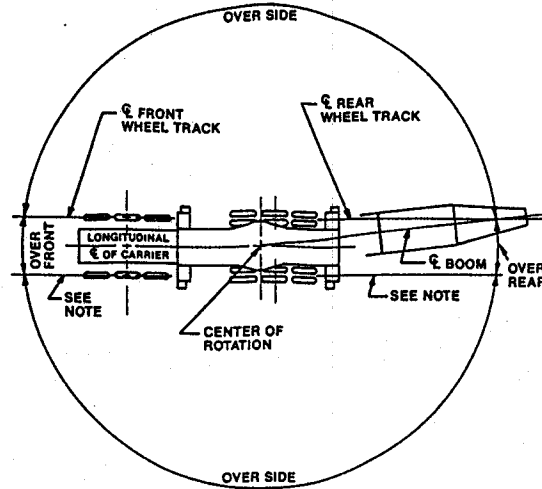
GENERAL INFORMATION ONLY



HC-258 working areas



Rubber tire mobile base on outriggers



Rubber tire mobile base on tires

Note: These lines determine the limiting position of any load for operation within working areas indicated.

GENERAL INFORMATION ONLY

We are constantly improving our products and therefore reserve the right to change designs and specifications.

