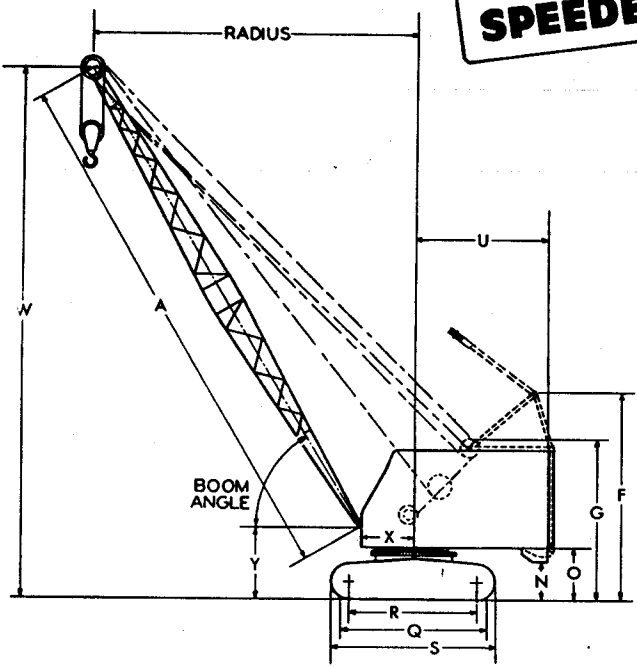


LINK-BELT SPEEDER

Clearances - Specifications

Working Ranges K-360 Crane

(SEVEN ROLLER SIDE FRAMES)



GENERAL DIMENSIONS		
Basic boom length	A	50'
Over-all height, retractable gantry lowered	F	13' 0" ①
Over-all height, retractable gantry raised	F	16' 0"
Over-all height, low gantry	G	12' 6"
Clearance (counterweight "AB")	N	2' 7"
Clearance (counterweight "A")	O	3' 4" ②
Crawler ground bearing length	Q	12' 3"
Center to center of wheels	R	11' 3"
Over-all crawler length	S	14' 2"
Tailswing (counterweight "A")	U	10' 6" ③
Tailswing (counterweight "AB")	U	10' 6" ③
Radius of boom hinge pin	X	4' 0"
Height of boom hinge pin	Y	5' 8"
Over-all width with 28" wide track shoes		10' 6"
Over-all width with 32" wide track shoes		10' 10"
Width of cab		10' 3"
Minimum ground clearance		1' 2"

① 13' 11" with rapid boom hoist.
 ② 3' 0" with retractable high gantry.
 ③ 10' 10" with retractable high gantry.

LIFTING CAPACITIES WITH LOW GANTRY

BOOM			W Boom Point Height	LIFTING CRANE		DRAGLINE		CLAMSHELL-MAGNET	
Length	Radius	Angle		Counterweight "A"	Counterweight "AB"	Counterweight "A" ①	Counterweight "AB" ①	Counterweight "A" ①	Counterweight "AB" ①
50'	12'	80°	55' 0"	53,290	60,790	---	---	15,000	15,000
	15'	77°	54' 5"	37,560	42,910	---	---	15,000	15,000
	20'	71°	52' 11"	24,780	28,430	---	---	15,000	15,000
	25'	65°	50' 11"	18,190	20,940	---	---	15,000	15,000
	30'	59°	48' 6"	14,330	16,530	12,000	12,000	12,900	14,870
	35'	51°	44' 6"	11,700	13,550	11,700	12,000	10,500	12,190
	40'	43°	39' 9"	9,770	11,370	9,770	11,370	8,800	10,230
	45'	34°	33' 8"	8,350	9,750	8,350‡	9,750‡	7,500	8,770
	50'	23°	25' 2"	---	---	---	---	---	---
			7,180	8,430	7,180‡	8,430‡	6,460	7,580	
60'	15'	79°	64' 7"	37,360	42,710	---	---	15,000	15,000
	20'	75°	63' 7"	24,430	28,080	---	---	15,000	15,000
	25'	69°	61' 8"	17,890	20,640	---	---	15,000	15,000
	30'	64°	59' 7"	13,930	16,130	---	---	12,500	14,510
	35'	59°	57' 1"	11,300	13,150	---	---	10,200	11,830
	40'	53°	53' 7"	9,370	10,970	11,300	12,000	8,450	9,870
	45'	47°	49' 6"	7,950	9,350	9,370	10,970	7,150	8,410
	50'	40°	44' 2"	6,780	8,030	7,950	9,350	6,100	7,220
	55'	32°	37' 5"	6,020	7,120	6,780	8,030	5,420	6,400
			---	---	6,020‡	7,120‡	---	---	
			5,300	6,300	5,890‡	6,950‡	4,770	5,670	
			---	---	5,300‡	6,300‡	---	---	
70'	15'	81°	74' 10"	36,960	42,310	---	---	15,000	15,000
	20'	77°	73' 10"	24,080	27,730	---	---	15,000	15,000
	25'	73°	72' 7"	17,590	20,340	---	---	15,000	15,000
	30'	68°	70' 7"	13,630	15,830	---	---	12,300	14,240
	35'	64°	68' 7"	11,000	12,850	---	---	9,900	11,560
	40'	59°	65' 8"	9,070	10,670	9,070	10,670	8,150	9,600
	45'	54°	62' 3"	7,650	9,050	7,650	9,050	6,870	8,140
	50'	49°	58' 6"	6,480	7,730	6,480	7,730	5,840	6,950
	55'	43°	53' 4"	5,620	6,720	5,620	6,720	5,050	6,040
	60'	36°	46' 10"	4,900	5,900	4,900	5,900	4,400	5,310
	64'	30°	41' 0"	---	---	4,380‡	5,370‡	---	---
	65'	29°	39' 7"	4,290	5,240	4,290‡	5,240‡	3,860	4,710
	70'	19°	28' 6"	3,690	4,540	3,690‡	4,540‡	3,320	4,080

	Counterweight "A"	Counterweight "AB"
Max. boom machine can pick clear of ground over end	70'	70'
Max boom plus jib machine can pick clear of ground over end	70' + 30'	70' + 40'

GENERAL INFORMATION ONLY