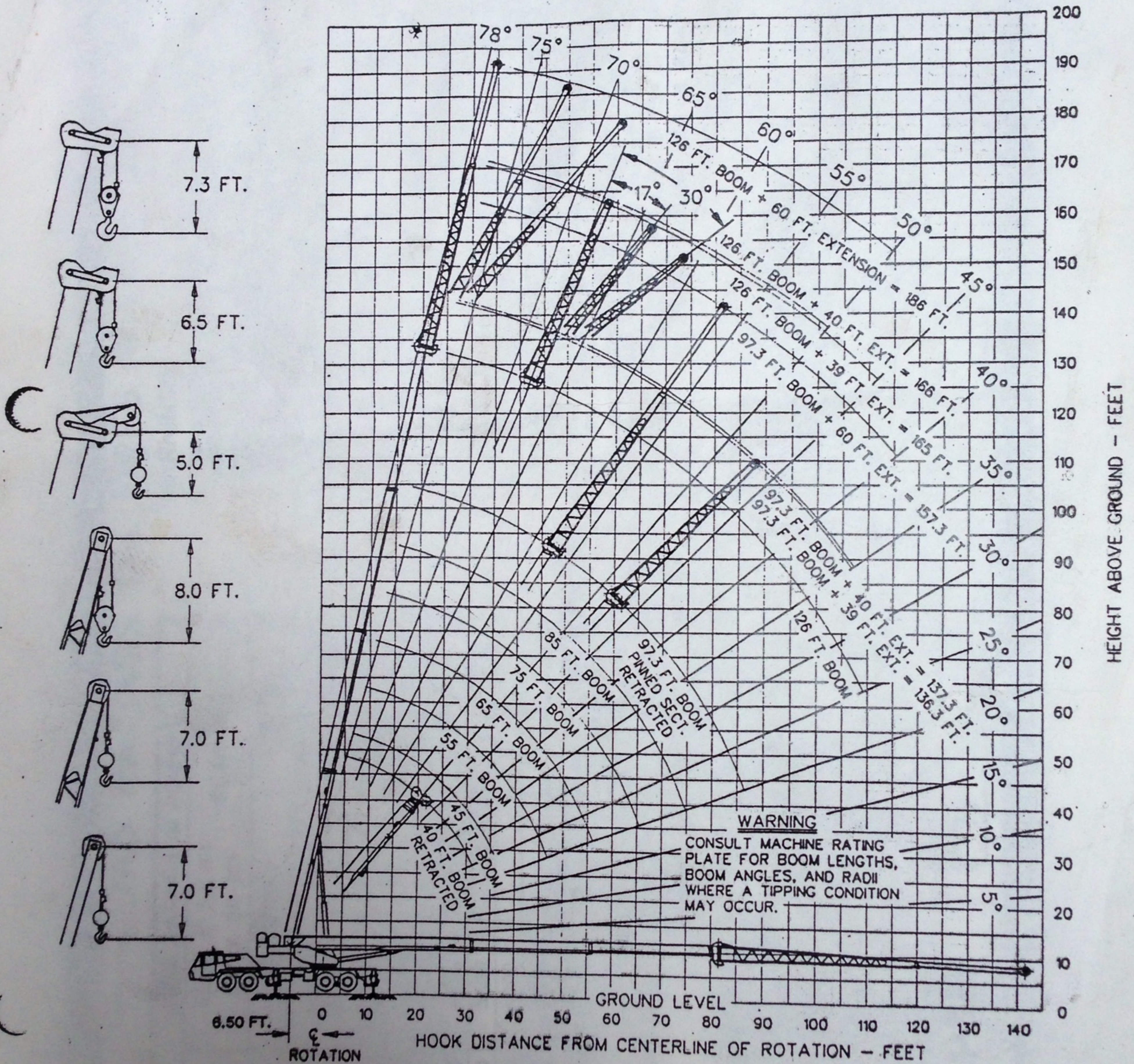


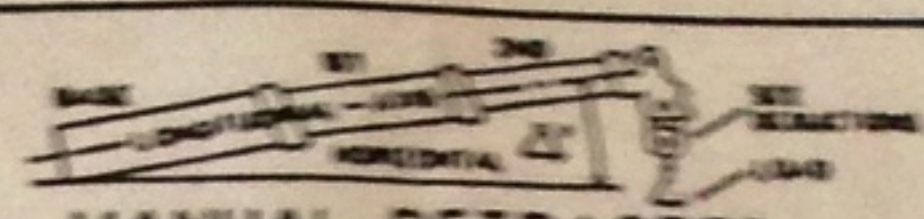
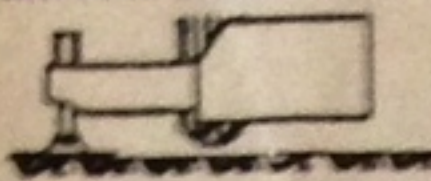
P&H CENTURY T-65C

65-ton hydraulic truck crane 186-ft (56.7m) boom and extension



Specifications

RATED LOADS IN POUNDS ON OUTRIGGERS



POWERED BOOM LENGTH IN FEET - MANUAL RETRACTED

OPERATING RADIUS FT.	40 FT.		45 FT.		55 FT.		65 FT.		75 FT.		85 FT.		87.3 FT.		OPERATING RADIUS FT.			
	RATED LOAD POUNDS		RATED LOAD POUNDS		RATED LOAD POUNDS		RATED LOAD POUNDS		RATED LOAD POUNDS		RATED LOAD POUNDS		RATED LOAD POUNDS					
	LOADING BOOM ANGLE	SIDE	REAR	LOADING BOOM ANGLE	SIDE	REAR	LOADING BOOM ANGLE	SIDE	REAR	LOADING BOOM ANGLE	SIDE	REAR	LOADING BOOM ANGLE	SIDE		REAR		
10	68	130000		71	102000		74	94800							10			
12	65	115000		68	98400		72	88000							12			
15	60	90000		64	90000		69	84000							15			
20	51	67000		56	67000		63	66900							20			
25	40	52000		48	52000		57	51900							25			
30	27	41700		38	41700		50	41600							30			
35				25	31700	32400	43	31700	32400	52	31700	32400	59	31700	32400	35		
40							34	24200	25300	46	24200	25300	54	24200	25300	40		
45							22	18700	19900	39	18700	19900	49	18700	19900	45		
50										31	15000	16200	43	15000	16200	50		
55										21	12100	13400	37	12100	13400	55		
60													29	9700	10900	60		
65										19	7900	9000	35	7900	9000	65		
70													28	6400	7500	70		
75													18	5100	6200	75		
80															29	4000	5000	80
85															22	3100	4000	85

INFORMATION:

1. CRANE LOAD RATINGS DO NOT EXCEED 85% OF TIPPING.
2. RATINGS ABOVE THE HEAVY LINE ARE BASED ON THE MACHINE'S HYDRAULIC OR STRUCTURAL COMPETENCE AND NOT ON MACHINE STABILITY.
3. DEDUCTIONS MUST BE MADE FROM RATED LOADS FOR STOWED LATTICE EXTENSION, OPTIONAL ATTACHMENTS, HOOKS AND HOOKBLOCKS (SEE DEDUCTIONS CHART), WEIGHTS OF SLINGS AND ALL OTHER LOAD HANDLING DEVICES SHALL BE CONSIDERED A PART OF THE LOAD.
4. CRANE LOAD RATINGS WITH OUTRIGGERS ARE BASED ON OUTRIGGERS FULLY EXTENDED AND SET TO A DISTANCE OF 11 FEET 9 3/4 INCH FROM THE LONGITUDINAL AXIS OF THE CARRIER TO THE OUTRIGGER FLOAT PIVOT CONNECTION WITH ALL LOAD REMOVED FROM CARRIER WHEELS.
5. COUNTERWEIGHT 9000 LBS. WITH 6473 LBS. REMOVABLE

LOAD RATINGS IN POUNDS WITH OUTRIGGERS EXTENDED

PINNED SECTION EXTENDED			LATTICE EXTENSION WITH PINNED SECTION RETRACTED				LATTICE EXTENSION WITH PINNED SECTION EXTENDED							
OPERATING RADIUS FT.	LOADING BOOM ANGLE	RATED LOAD IN POUNDS	39 FT.		40 FT.		60 FT.		39 FT.		40 FT.		60 FT.	
			FOR ALL BOOM LENGTHS 88.7 TO 126 FT.	FOR ALL BOOM LENGTHS 78 TO 136.3 FT.	FOR ALL BOOM LENGTHS 80 TO 137.3 FT.	FOR ALL BOOM LENGTHS 100 TO 157.3 FT.	FOR 85 FOOT BOOM ONLY	FOR 85 FOOT BOOM ONLY	FOR 85 FOOT BOOM ONLY	FOR 85 FOOT BOOM ONLY	FOR 85 FOOT BOOM ONLY	FOR 85 FOOT BOOM ONLY	FOR 85 FOOT BOOM ONLY	FOR 85 FOOT BOOM ONLY
30	78	20700												
35	74	19000												
40	72	17500												
45	69	16500												
50	67	15000												
55	64	14000												
60	62	11700	12800											
65	59	9900	11000											
70	56	8300	9400											
75	53	7000	8100											
80	50	5900	6900											
85	48	5000	5900											
90	43	4200	5000											
100	35	2700	3700											
110	25	-	2500											

NOTE:

1. WHEN BOOM IS NOT FULLY EXTENDED, USE ONLY BOOM ANGLES, NOT OPERATING RADIUS TO DETERMINE LOAD RATING.
2. FOR BOOM ANGLES NOT SHOWN, USE RATING OF NEXT LOWER BOOM ANGLE.
3. FOR BUCKET RATINGS ON 80 FT. EXTENSION, DEDUCT 20% FROM LOAD RATINGS.

WARNING:

A TIPPING CONDITION WILL OCCUR (WITH OR WITHOUT A HOOKBLOCK) WITH 39 FT., 40 FT., OR 60 FT. BOOM EXTENSION DUE TO THE FOLLOWING CONDITIONS:
 1. DO NOT EXCEED 120 FT. OPERATING RADIUS WITH PINNED MAIN BOOM SECTION RETRACTED.
 2. DO NOT EXCEED 120 FT. OPERATING RADIUS WITH PINNED MAIN BOOM SECTION EXTENDED.

NOTE: OPERATION OF THIS EQUIPMENT IN EXCESS OF RATED LOAD AND DISREGARD OF INSTRUCTIONS IS AN UNSAFE PRACTICE AND WILL RESULT IN DENIAL OF WARRANTY CLAIMS.

TRIGGERS EXTENDED

LATTICE EXTENSION WITH 22° OFFSET

PINNED SECTION-RETRACTED		PINNED SECTION EXTENDED	
25-25.5 FT.		42.5 FT.	
SEE DEDUCTIONS		SEE DEDUCTIONS	
LOAD		LOAD	
FOR ALL BOOM LENGTHS 54 TO 95.8 FT.		FOR ALL BOOM LENGTHS 92.2 TO 133.5 FT.	
FOR 95.8 FOOT BOOM ONLY	LOADED BOOM ANGLE °	FOR 133.5 FOOT BOOM ONLY	LOADED BOOM ANGLE °
RATED LOAD IN POUNDS	SIDE	RATED LOAD IN POUNDS	SIDE
REAR		REAR	
20		20	
25		25	
30		30	
35	74	35	
40	71	40	
45	67	45	6800
50	63	50	6300
55	60	55	5900
60	56	60	5400
65	51	65	5100
70	46	70	4600
75	41	75	4000
80	34	80	3400
85	27	85	3000

PINNED SECTION-RETRACTED		PINNED SECTION EXTENDED	
25-25.5 FT.		42.5 FT.	
SEE DEDUCTIONS		SEE DEDUCTIONS	
LOAD		LOAD	
FOR ALL BOOM LENGTHS 71.5 TO 112.8 FT.		FOR ALL BOOM LENGTHS 74.7 TO 116.5 FT.	
FOR 112.8 FOOT BOOM ONLY	LOADED BOOM ANGLE °	FOR 116.5 FOOT BOOM ONLY	LOADED BOOM ANGLE °
RATED LOAD IN POUNDS	SIDE	RATED LOAD IN POUNDS	SIDE
REAR		REAR	
20		20	
25		25	
30		30	
35		35	
40		40	
45	75	45	74
50	72	50	71
55	69	55	68
60	66	60	65
65	62	65	61
70	59	70	58
75	55	75	55
80	51	80	51
85	47	85	47
90	42	90	43
95	37	95	38
100	30	100	32

PINNED SECTION-RETRACTED		PINNED SECTION EXTENDED	
25-25.5 FT.		42.5 FT.	
SEE DEDUCTIONS		SEE DEDUCTIONS	
LOAD		LOAD	
FOR ALL BOOM LENGTHS 54 TO 95.8 FT.		FOR ALL BOOM LENGTHS 92.2 TO 133.5 FT.	
FOR 95.8 FOOT BOOM ONLY	LOADED BOOM ANGLE °	FOR 133.5 FOOT BOOM ONLY	LOADED BOOM ANGLE °
RATED LOAD IN POUNDS	SIDE	RATED LOAD IN POUNDS	SIDE
REAR		REAR	
20		20	
25		25	
30		30	
35		35	
40		40	
45		45	
50		50	
55	74	55	74
60	71	60	72
65	67	65	69
70	63	70	66
75	59	75	64
80	55	80	61
85	51	85	58
90	47	90	55
95	42	95	52
100	37	100	48
105	30	105	44

WARNING:

A TIPPING CONDITION WILL OCCUR (WITH OR WITHOUT A HOOKBLOCK) WITH 25 FT., 25.5 FT., OR 42.5 FT. BOOM EXTENSION DUE TO THE FOLLOWING CONDITIONS:

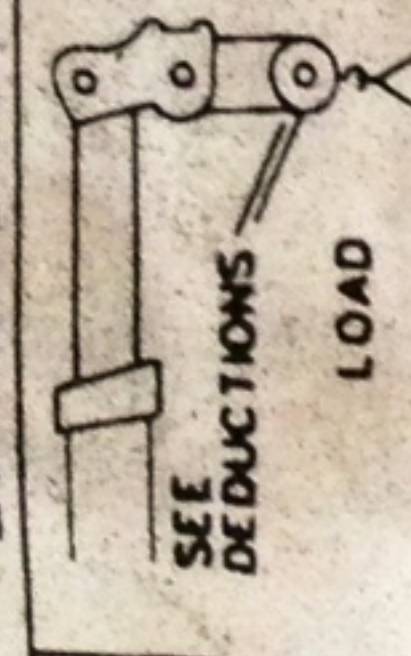
1. DO NOT EXCEED 100 FT. OPERATING RADIUS WITH PINNED MAIN BOOM SECTION RETRACTED.
2. DO NOT EXCEED 105 FT. OPERATING RADIUS WITH PINNED MAIN BOOM SECTION EXTENDED.

RATING CHART - PCSA CLASS 10 - 79

LOAD RATINGS IN POUNDS WITH 0

LATTICE EXTENSION WITH 2° OFFSET

PINNED SECTION EXTENDED

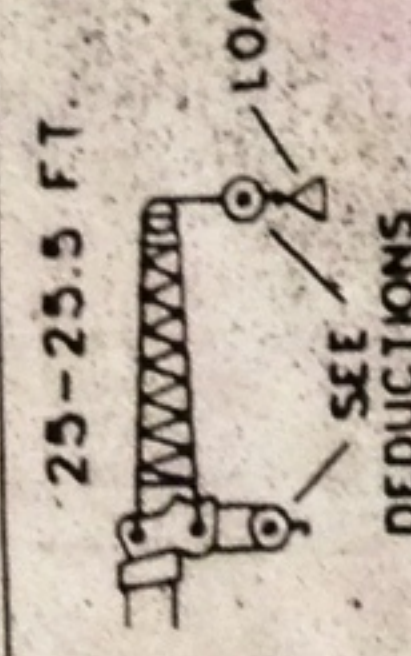


SEE DEDUCTIONS LOAD

FOR ALL BOOM LENGTHS 49.7 TO 91 FT.

OPERATING RADIUS FT	RATED LOAD IN POUNDS	
	SIDE	REAR
20		
25	75	15700
30	71	14100
35	68	11400
40	64	8900
45	60	7000
50	56	5700
55	52	4600
60	48	3700
65	43	3000
70	38	2400
75	32	1900
80	24	1500
85	11	2400

PINNED SECTION RETRACTED

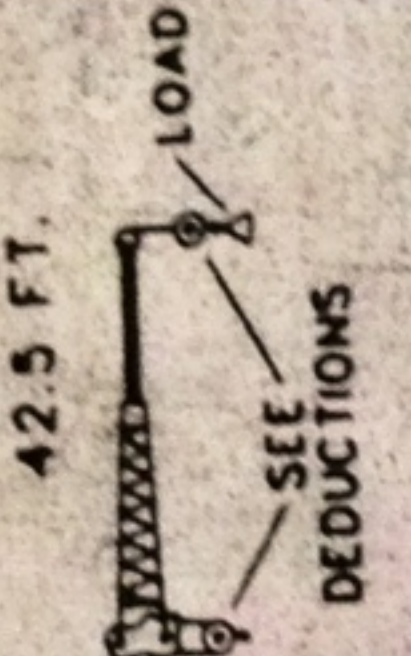


SEE DEDUCTIONS LOAD

FOR ALL BOOM LENGTHS 54 TO 95.8 FT.

OPERATING RADIUS FT	RATED LOAD IN POUNDS	
	SIDE	REAR
20		
25		
30	73	13000
35	70	10950
40	66	8450
45	62	6650
50	59	5300
55	55	4250
60	51	3400
65	46	2700
70	42	2100
75	37	1600
80	31	1150
85	23	1900
90	10	1500

PINNED SECTION EXTENDED

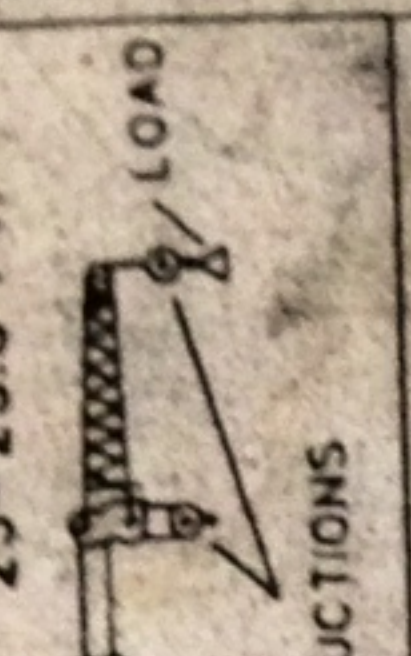


SEE DEDUCTIONS LOAD

FOR ALL BOOM LENGTHS 71.5 TO 112.8 FT.

OPERATING RADIUS FT	RATED LOAD IN POUNDS	
	SIDE	REAR
20		
25		
30		
35	73	6500
40	71	6000
45	68	5600
50	65	5200
55	62	4800
60	59	4100
65	56	3400
70	52	2800
75	49	2300
80	45	1850
85	41	1450
90	36	1150
95	31	1800
100	25	1400

PINNED SECTION EXTENDED

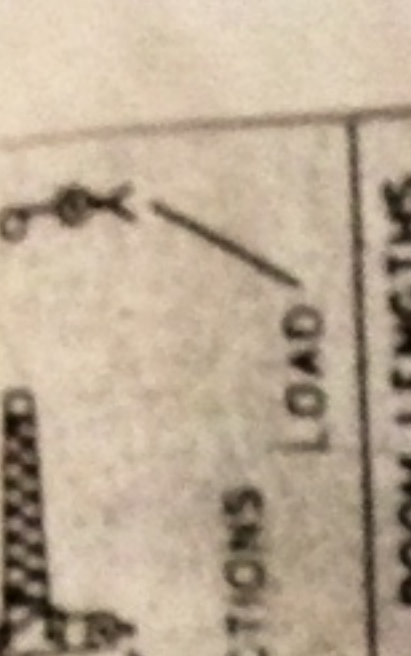


SEE DEDUCTIONS LOAD

FOR ALL BOOM LENGTHS 74.7 TO 116.5 FT.

OPERATING RADIUS FT	RATED LOAD IN POUNDS	
	SIDE	REAR
20		
25		
30		
35	75	8900
40	72	8100
45	69	7050
50	66	5700
55	63	4600
60	61	3750
65	58	3050
70	54	2450
75	51	1950
80	47	1500
85	43	1150
90	39	1800
95	35	1500

PINNED SECTION EXTENDED



SEE DEDUCTIONS LOAD

FOR ALL BOOM LENGTHS 92.2 TO 133.5 FT.

OPERATING RADIUS FT	RATED LOAD IN POUNDS	
	SIDE	REAR
20		
25		
30		
35		
40		
45	74	6100
50	71	5700
55	69	5200
60	67	4300
65	64	3600
70	61	3000
75	59	2450
80	56	2050
85	53	1650
90	50	1300
95	46	2000
100	42	1700
105	39	1300

- NOTE:**
1. WHEN BOOM IS NOT FULLY EXTENDED, USE ONLY BOOM ANGLES. NOT OPERATING RADIUS TO DETERMINE LOAD RATING.
 2. FOR BOOM ANGLES NOT SHOWN, USE RATING OF NEXT LOWER BOOM ANGLE.
 3. FOR BUCKET RATINGS ON 42.5 FT. EXTENSION, DEDUCT 20% FROM LOAD RATINGS.

... AND WILL RESULT IN DENIAL OF WARRANTY CLAIMS.

LOAD RATINGS ON TIRES WITH 4 SECTION BOOM

LOAD RATINGS IN POUNDS			
OPERATING RATING	10.00 X 20 (F) 10R X 20 (G)		REAR TIRES
	STATIONARY		TRAVEL RATINGS OVER REAR
	OVER REAR	OVER SIDE	CREEP 2.5 MPH
10.0	23000	10100	17800
12.0	18400	7500	16000
15.0	13300	4900	13300
20.0	8500	2300	8500
25.0	5800		5800
30.0	4000		
35.0	2800		

DESCRIPTION	DEDUCTIONS TO BE MADE FROM LOAD RATINGS IN POUNDS			
	WITHOUT HOOK BLOCK ON BOOM POINT	HOOK BLOCK ON POWERED BOOM POINT		
	5 TON	10-28 TON	5 TON WITH AUXILIARY SHEAVE	10-28 TON WITH AUXILIARY SHEAVE
HOOK BLOCK WEIGHT	-	150	250	650
25 FT. LATTICE EXTENSION STOWED	-	250	650	750
25.5 FT. LATTICE EXTENSION STOWED	-	300	700	800

Harnischfeger
P&H

S/N

J33

32U2867

WARNINGS:

1. CRANE LOAD RATINGS WITHOUT OUTRIGGERS DEPENDS ON TIRE CAPACITY AND CONDITION OF TIRES INFLATED PER TABLE.
2. WHEN TRANSPORTING A LOAD, MACHINE MUST BE ON FIRM, LEVEL SURFACE WITH MECHANICAL HOUSELOCK ENGAGED. THE LOAD MUST BE CENTERED OVER REAR OF MACHINE AND RESTRAINED FROM SWINGING. SEE AREAS OF OPERATION PLATE FOR WORKING RANGES.
3. LIFT LOADS WITH MINIMUM BOOM LENGTH; DO NOT EXCEED 48 FEET BOOM LENGTH WHEN LIFTING ON RUBBER.
4. DO NOT ATTEMPT LIFTS ON TIRES WITH EXTENSION ERECTED.

DEFINITIONS:

1. CREEP IS MOTION FOR LESS THAN 200 FT. IN A 30 MINUTE PERIOD AND NOT EXCEEDING 1 M.P.H.

INFORMATION:

1. DEDUCTIONS MUST BE MADE FROM RATED LOADS FOR STOWED LATTICE EXTENSION, OPTIONAL ATTACHMENTS, HOOKS AND HOOKBLOCKS (SEE DEDUCTIONS CHART). WEIGHTS OF SLINGS AND ALL OTHER LOAD HANDLING DEVICES SHALL BE CONSIDERED A PART OF THE LOAD.
2. RATINGS ABOVE THE HEAVY LINE ARE BASED ON STRUCTURAL COMPETENCE AND NOT ON MACHINE STABILITY.
3. IT IS RECOMMENDED THAT OUTRIGGERS BE EXTENDED AS FAR AS POSSIBLE AND CLEAR OF GROUND WHEN LIFTING ON TIRES.
4. STABILITY RATINGS DO NOT EXCEED 75% OF TIPPING LOADS.
5. 2680 LB. COUNTERWEIGHT WITH 1930 LB. REMOVABLE

NOTES:

OPERATION OF THIS EQUIPMENT IN EXCESS OF RATED LOADS AND DISREGARD OF INSTRUCTIONS IS AN UNSAFE PRACTICE AND WILL RESULT IN DENIAL OF WARRANTY CLAIMS.

SIZE	TIRE INFLATION		
	STATIC PSI	CREEP PSI	2.5 MPH PSI
15.0 X 22.5 (H)	105	105	100
15R X 22.5 (J)	115	115	115
10.00 X 20 (F)	95	95	85
10R X 20 (G)	120	120	120
16.5 X 22.5 (H)	100	100	90
16.5R X 22.5 (J)	120	120	120

LOAD RATINGS FOR OF

LOAD RATINGS IN POUNDS FOR 17° OFFSET WITH OUTRIGGERS EXTENDED

LATTICE EXTENSION WITH PINNED SECTION RETRACTED

39 FT.				40 FT.				60 FT.			
OPERATING HEIGHT	OPERATING RADIUS	RATED LOAD IN POUNDS		OPERATING HEIGHT	OPERATING RADIUS	RATED LOAD IN POUNDS		OPERATING HEIGHT	OPERATING RADIUS	RATED LOAD IN POUNDS	
		SIDE	REAR			SIDE	REAR			SIDE	REAR
36	78	9300		36				36			
40	76	8900		40	76	8000		40			
45	74	8500		45	74	7700		45			
50	72	8100		50	73	7300		50	77	5100	
55	69	7800		55	70	7000		55	75	4900	
60	67	7500		60	68	6700		60	73	4700	
65	65	7200		65	66	6400		65	71	4500	
70	62	7000		70	63	6200		70	69	4300	
75	60	6800		75	61	6000		75	67	4100	
80	57	6600		80	58	5800		80	65	3900	
85	54	6100	6400	85	55	5400	5600	85	63	3800	
90	52	5200	6000	90	53	4500	5300	90	61	3700	
100	45	3600	4000	100	46	2800	3700	100	56	3400	
110	37	2200	3000	110	38	-	2200	110	51	3000	3200
				120	45	1900	2500	120	45	1900	2500

LATTICE EXTENSION WITH PINNED SECTION

35 FT.				40 FT.			
OPERATING HEIGHT	OPERATING RADIUS	RATED LOAD IN POUNDS		OPERATING HEIGHT	OPERATING RADIUS	RATED LOAD IN POUNDS	
		SIDE	REAR			SIDE	REAR
36				36			
40				40			
45				45			
50	77	8300		50	77	7300	
55	75	8100		55	76	7100	
60	73	7700		60	74	6900	
65	71	7300		65	72	6400	
70	69	6900		70	70	6000	
75	67	6500		75	68	5700	
80	65	6200		80	66	5400	
85	63	5900		85	64	5100	
90	61	5600		90	62	4800	
100	57	4400	5100	100	57	3600	4300
110	52	3100	3800	110	52	2300	3100
120	46	2000	2700	120	47	-	1900

- NOTES:
1. SEE MAIN LOAD RATING CHART ON OUTRIGGERS FOR WARN
 2. FOR BUCKET RATINGS ON 60 FT. EXTENSION, DEDUCT 20*
 3. STABILITY RATINGS DO NOT EXCEED 85* OF TIPPING LOAD
 4. WHEN BOOM IS NOT FULLY EXTENDED USE ONLY BOOM AN
 5. FOR BOOM ANGLES NOT SHOWN, USE RATING OF NEXT LO
 6. 9000 LB. COUNTERWEIGHT WITH 6473 LB. REMOVABLE

Harnischfeger
P&H

32U2636

OPERATION OF THIS EQUIPMENT IN EXCES

EXTENSION WITH 126 FOOT BOOM

LOAD RATINGS IN POUNDS FOR 30° OFFSET WITH OUTRIGGERS EXTENDED

LATTICE EXTENSION WITH PINNED SECTION RETRACTED				LATTICE EXTENSION WITH PINNED SECTION EXTENDED																					
39 FT.				40 FT.				60 FT.				39 FT.				40 FT.				60 FT.					
OPERATING RADIUS IN FEET FOR 136.3 FOOT BOOM ONLY	LOADED BOOM ANGLE	RATED LOAD IN POUNDS		OPERATING RADIUS IN FEET FOR 137.3 FOOT BOOM ONLY	LOADED BOOM ANGLE	RATED LOAD IN POUNDS		OPERATING RADIUS IN FEET FOR 157.3 FOOT BOOM ONLY	LOADED BOOM ANGLE	RATED LOAD IN POUNDS		OPERATING RADIUS IN FEET FOR 165 FOOT BOOM ONLY	LOADED BOOM ANGLE	RATED LOAD IN POUNDS		OPERATING RADIUS IN FEET FOR 166 FOOT BOOM ONLY	LOADED BOOM ANGLE	RATED LOAD IN POUNDS		OPERATING RADIUS IN FEET FOR 186 FOOT BOOM ONLY	LOADED BOOM ANGLE	RATED LOAD IN POUNDS			
		SIDE	REAR			SIDE	REAR			SIDE	REAR			SIDE	REAR			SIDE	REAR			SIDE	REAR	SIDE	REAR
		FOR ALL BOOM LENGTHS 79 TO 135.3 FT.				FOR ALL BOOM LENGTHS 80 TO 137.3 FT.				FOR ALL BOOM LENGTHS 100 TO 157.3 FT.				FOR ALL BOOM LENGTHS 107.7 TO 165 FT.				FOR ALL BOOM LENGTHS 108.7 TO 166 FT.				FOR ALL BOOM LENGTHS 128.7 TO 186 FT.			
36				36				36				36				36				36					
40				40				40				40				40				40					
45	77	7100		45	77	6300		45				45				45				45					
50	75	6900		50	76	6100		50				50				50				50					
55	73	6700		55	73	5900		55				55	78	6800		55	78	5900		55					
60	71	6500		60	71	5700		60	72	3900		60	76	6600		60	76	5800		60					
65	68	6300		65	69	5500		65	75	3700		65	74	6500		65	74	5600		65					
70	66	6100		70	66	5400		70	73	3600		70	72	6400		70	73	5500		70	78	3700			
75	63	6000		75	63	5200		75	71	3500		75	70	6100		75	71	5300		75	76	3600			
80	60	5900		80	61	5100		80	69	3400		80	68	5800		80	69	5000		80	74	3500			
85	57	5800		85	58	5000		85	67	3300		85	66	5600		85	66	4700		85	73	3400			
90	55	5600	5700	90	55	4900		90	64	3200		90	64	5300		90	64	4500		90	71	3300			
100	48	3900	4700	100	48	3300	4000	100	60	3000		100	59	4800	4900	100	60	4100		100	67	3200			
110	40	2400	3200	110	41	1800	2500	110	54	2900		110	54	3400	4100	110	55	2700	3400	110	63	3000			
								120	48	2300	2800		120	49	2300	3000	120	49	-	2200	120	59	2700		
								130	40	-	1800		130	42	-	1900					130	55	1800	2500	

ION AND REEVING.

- WARNINGS:**
- DO NOT EXCEED 130 FT. RADIUS (WITH OR WITHOUT HOOK BLOCK) WITH 39 FT., 40 FT. OR 60 FT. BOOM EXTENSION OR A TIPPING CONDITION WILL OCCUR.
 - DEDUCTIONS FROM OFFSET EXTENSION LOAD RATINGS MUST BE APPLIED ACCORDING TO DEDUCTION TABLE SHOWN ON MAIN LOAD RATING CHART.

US TO DETERMINE LOAD RATING.

ND DISREGARD OF INSTRUCTIONS IS AN UNSAFE PRACTICE AND WILL RESULT IN DENIAL OF WARRANTY CLAIMS