

I 0.00t counterweight, fully-extended outriggers 360°

Reach (m)	Main boom length (m)								
	13.5	18.4	23.2	28	32.8	37.6	42.4	47.2	52
3	100	100							
3.5	100	96.3	70						
4	91.8	87.5	65.6						
4.5	81.6	77.7	61.8	51.8					
5	71.5	64.9	58.4	48.9					
5.5	59.2	54.2	50.4	46.2	40.8				
6	50.1	46.2	43.3	42.5	38.6				
6.5	43.2	40	37.6	37.3	36.5	33.3			
7	37.7	35	33.1	33	32.6	31.8			
7.5	32.9	31	29.3	29.5	29.2	28.7			
8	28.7	27.6	26.2	26.6	26.4	26.1	25.5		
9	22.3	21.7	21.3	21.8	22	21.8	21.5	21.1	
10	17.7	17.2	17	18.2	18.5	18.5	18.3	18.1	
11	14.1	13.8	13.5	15.1	15.8	15.9	15.8	15.7	15.5
12		11.1	10.9	12.4	13.5	13.8	13.8	13.7	13.6
14		6.9	6.7	8.3	9.4	10.2	10.5	10.5	10.5
16		3.9	3.8	5.4	6.4	7.2	7.8	8.2	8.2
18			1.8	3.3	4.3	5.1	5.6	6.1	6.5
20				1.7	2.7	3.4	4	4.4	4.8
22					1.4	2.1	2.7	3.1	3.5
24						1.1	1.6	2.1	2.5
26								1.2	1.6
28									0.9
30									
32									
34									
36									
38									
40									
42									
Multiplying power	12	10	8	6	5	4	4	3	2
Min Elevation angle of main boom (°)	0	0	8.6	22.1	30.5	36.5	41.1	44.8	48

II

8.52t counterweight, fully-extended outriggers 360°									
Reach (m)	Main boom length (m)								
	13.5	18.4	23.2	28	32.8	37.6	42.4	47.2	52
3	100	100							
3.5	100	96.3	70						
4	91.8	87.5	65.6						
4.5	81.6	77.7	61.8	51.8					
5	73.4	70	58.4	48.9					
5.5	66.8	63.6	55.3	46.2	40.8				
6	61.2	57.3	52.6	43.8	38.6				
6.5	53.6	49.8	47	41.6	36.7	33.3			
7	47	43.9	41.5	39.7	35	31.7			
7.5	41.7	39	37.1	37	33.3	30.3			
8	37.4	35	33.3	33.4	31.9	28.9	26.5		
9	30.1	28.7	27.4	27.8	27.7	27.4	24.3	21.6	
10	24.4	23.9	22.9	23.5	23.6	23.5	23.2	20.1	
11	19.9	19.6	19.4	20.1	20.3	20.4	20.2	20	16.8
12		16.3	16.1	17.3	17.7	17.8	17.7	17.6	16.3
14		11.4	11.3	12.8	13.7	13.9	14	14	13.9
16		7.9	7.9	9.4	10.4	11.1	11.2	11.3	11.3
18			5.4	6.8	7.8	8.6	9.1	9.2	9.3
20			3.4	4.9	5.9	6.6	7.1	7.6	7.7
22				3.3	4.3	5	5.6	6	6.4
24				2	3	3.7	4.3	4.7	5.1
26					2	2.7	3.2	3.6	4
28					1.1	1.8	2.3	2.7	3.1
30						1	1.5	2	2.3
32							0.9	1.3	1.7
34									1.1
36									
38									
40									
42									
Multiplying power	12	10	8	6	5	4	4	3	2
Min. Elevation Angle of main boom (°)	0	0	0	0	0	14.3	22.8	29.7	34.7

III

14.48t counterweight, fully-extended outriggers 360°

Reach (m)	Main boom length (m)								
	13.5	18.4	23.2	28	32.8	37.6	42.4	47.2	52
3	100	100							
3.5	100	96.3	70						
4	91.8	87.5	65.6						
4.5	81.6	77.7	61.8	51.8					
5	73.4	70	58.4	48.9					
5.5	66.8	63.6	55.3	46.2	40.8				
6	61.2	58.3	52.6	43.8	38.6				
6.5	56.5	53.8	50	41.6	36.7	33.3			
7	52.5	50	47.2	39.7	35	31.7			
7.5	47.7	44.7	42.5	37.9	33.3	30.3			
8	42.8	40.2	38.3	36.2	31.9	28.9	26.5		
9	35	33.1	31.6	31.9	29.2	26.6	24.3	21.6	
10	28.8	27.8	26.6	27.1	27.1	24.5	22.5	20.1	
11	24	23.7	22.7	23.3	23.5	23.5	20.9	18.8	16.8
12		20.2	19.6	20.3	20.6	20.6	19.4	17.7	15.8
14		14.6	14.5	15.7	16.1	16.3	16.3	16	14
16		10.6	10.6	12.1	12.9	13.2	13.3	13.3	12.2
18			7.8	9.2	10.2	10.8	10.9	11	10.9
20			5.6	7	8	8.7	9.1	9.2	9.3
22				5.2	6.2	6.9	7.4	7.8	7.9
24				3.8	4.8	5.5	6	6.4	6.7
26					3.6	4.3	4.8	5.2	5.6
28					2.6	3.3	3.8	4.2	4.6
30					1.7	2.4	2.9	3.4	3.7
32						1.7	2.2	2.6	3
34						1.1	1.6	2	2.3
36							1	1.4	1.7
38								0.9	1.2
40									
42									
Multiplying power	12	10	8	6	5	4	4	3	2
Min. Elevation Angle of main boom (°)	0	0	0	0	0	0	0	13.4	21.2



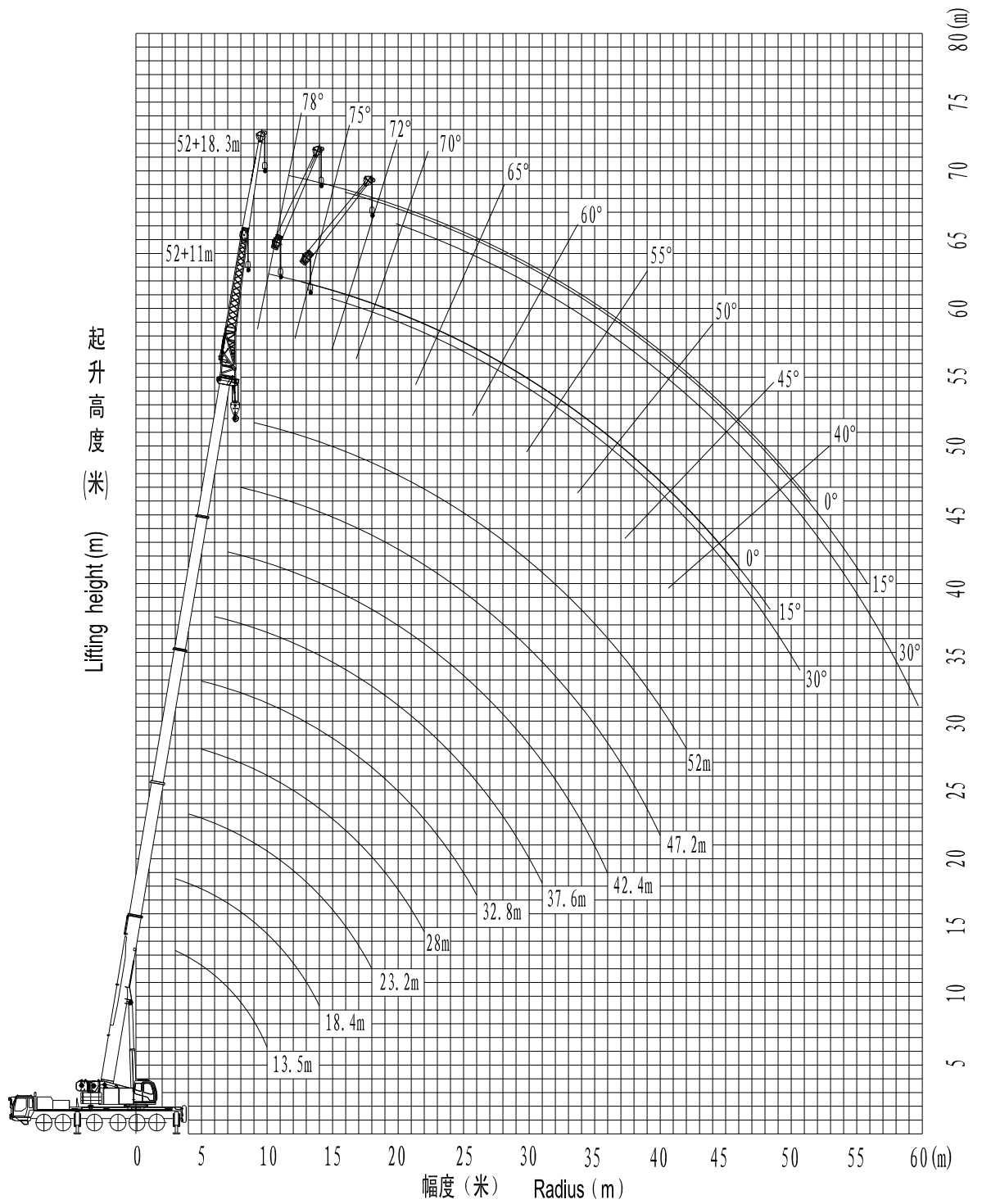
8.52t counterweight, fully-extended outriggers, side & back work												
Main boom (°)	52m main boom											
	10.7m auxiliary boom						18m auxiliary boom					
	Auxiliary boom 0°		Auxiliary boom 15°		Auxiliary boom 30°		Auxiliary boom 0°		Auxiliary boom 15°		Auxiliary boom 30°	
	Lift capacity	Reach (m)	L.C	reach (m)	L.C	reach (m)	L.C	reach (m)	L.C	reach (m)	L.C	reach (m)
78°	7	10.1	5.2	12.5	3.7	14.8	3.8	11.6	2.8	15.8	2.2	19.6
75°	6.8	13.2	4.5	15.6	3.6	17.8	3.4	15.1	2.6	19.3	2.1	22.9
72°	6.3	16.2	4.2	18.5	3.4	20.6	3.2	18.5	2.5	22.6	2	26.1
70°	5.4	18.2	4	20.5	3.3	22.6	3	20.7	2.4	24.7	1.9	28.2
65°	4.4	23.1	3.6	25.3	3.1	27.2	2.7	26.2	2.1	30	1.7	33.2
60°	2.7	27.9	2.4	30	2.3	31.8	1.9	31.5	1.6	35.1	1.4	38
55°	1.5	32.4	1.4	34.4	1.3	36	1	36.6	0.8	40	0.7	42.6
50°	0.7	36.7	0.7	38.6	0.6	40	—	—	—	—	—	—

## VI

14.48t counterweight, fully-extended outriggers, side & back work												
Main boom (°)	52m main boom											
	10.7m auxiliary boom						18m auxiliary boom					
	Au. Boom 0°		Au. Boom 15°		Au. Boom 30°		Au. Boom 0°		Au. Boom 15°		Au. Boom 30°	
	Lift Capacity	reach (m)	L.C.	reach (m)	L.C.	reach (m)	L.C.	reach (m)	L.C.	reach (m)	L.C.	reach (m)
78°	7	10.1	5.2	12.5	3.7	14.8	3.8	11.6	2.8	15.8	2.2	19.6
75°	6.8	13.2	4.5	15.6	3.6	17.8	3.4	15.1	2.6	19.3	2.1	22.9
72°	6.3	16.2	4.2	18.5	3.4	20.6	3.2	18.5	2.5	22.6	2	26.1
70°	5.4	18.2	4	20.5	3.3	22.6	3	20.7	2.4	24.7	1.9	28.2
65°	4.5	23.1	3.6	25.3	3.1	27.2	2.7	26.2	2.2	30	1.7	33.2
60°	3.9	27.9	3.3	30	2.9	31.8	2.4	31.5	1.9	35.1	1.5	38
55°	2.6	32.4	2.4	34.4	2.2	36	1.8	36.6	1.6	40	1.4	42.6
50°	1.6	36.7	1.5	38.6	1.6	40	1.1	41.4	0.9	44.5	0.9	46.8
45°	1	40.7	0.9	42.4	0.9	43.6	—	—	—	—	—	—

## VII

19.46t counterweight, fully-extended outriggers, side & back work												
Main boom (°)	52m main boom											
	10.7m auxiliary boom						18m auxiliary boom					
	Au. Boom 0°		Au. Boom 15°		Au. Boom 30°		Au. Boom 0°		Au. Boom 15°		Au. Boom 30°	
	Lift Capacity	reach (m)	L. C.	reach (m)	L. C.	reach (m)	L. C.	reach (m)	L. C.	reach (m)	L. C.	reach (m)
78°	7	10.1	5.2	12.5	3.7	14.8	3.8	11.6	2.8	15.8	2.2	19.6
75°	6.8	13.2	4.5	15.6	3.6	17.8	3.4	15.1	2.6	19.3	2.1	22.9
72°	6.3	16.2	4.2	18.5	3.4	20.6	3.2	18.5	2.5	22.6	2	26.1
70°	5.4	18.2	4	20.5	3.3	22.6	3	20.7	2.4	24.7	1.9	28.2
65°	4.5	23.1	3.6	25.3	3.1	27.2	2.7	26.2	2.2	30	1.7	33.2
60°	4	27.9	3.3	30	2.9	31.8	2.4	31.5	1.9	35.1	1.5	38
55°	3.4	32.4	2.4	34.4	2.3	36	1.9	36.6	1.6	40	1.4	42.6
50°	2.4	36.7	2.2	38.6	2.1	40	1.7	41.4	1.5	44.5	1.3	46.8
45°	1.7	40.7	1.6	42.4	1.5	43.6	1.1	45.9	1	48.8	0.9	50.7
40°	1.1	44.5	1	46	0.9	47	—	—	—	—	—	—



Lifting Height Curve