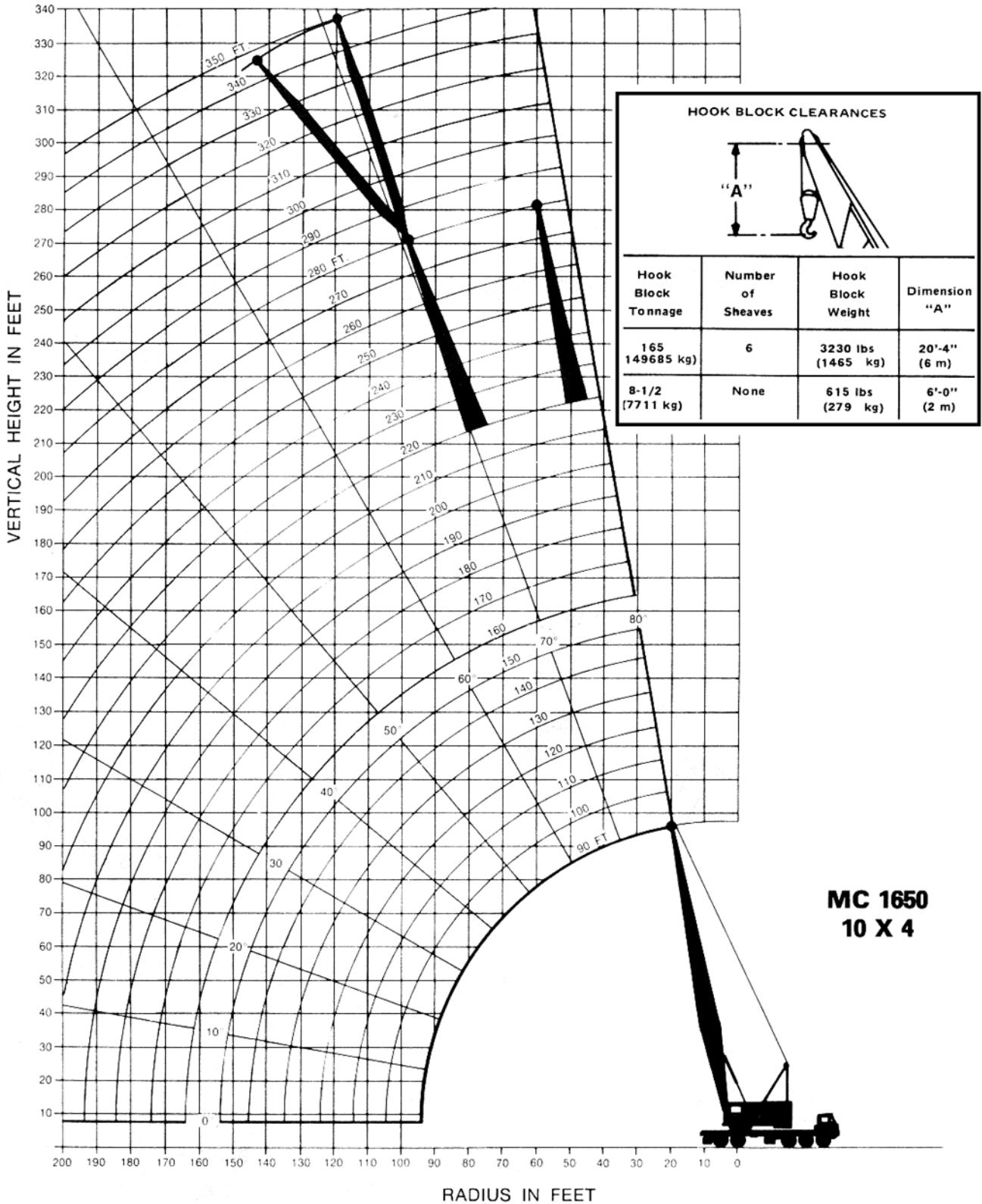


LONG TAPERED PEAK BOOM

RANGE DIAGRAM:



**MC 1650
10 X 4**

**LONG TAPERED PEAK BOOM: WITH MAXIMUM COUNTERWEIGHT 68,600 lbs (31117 kg)
& BUMPER COUNTERWEIGHT 16,000 lbs (7258 kg)**

CAPACITY CHART: Maximum Rated Load in Pounds

Boom Radius Feet	Boom Angle Degrees	Boom Peak Height Feet	With Outriggers	
			Over Rear	Over Side
90 Ft. Boom				
20	79.6	95.5	191600*	191600*
25	76.3	94.5	166600*	166600*
30	73.0	93.1	139000*	139000*
35	69.7	91.4	118900*	118900*
40	66.2	89.4	103700*	98700
45	62.7	87.0	91800*	83400
50	59.1	84.2	81100	72000
60	51.3	77.3	63900	56100
70	42.6	67.9	52400	45700
80	32.1	54.8	44200	38300
90	16.6	32.7	38000	32700
100 Ft. Boom				
25	77.7	104.7	154400*	154400*
30	74.8	103.5	138400*	138400*
35	71.8	102.0	118400*	118400*
40	68.7	100.2	103200*	98400
45	65.6	98.1	91300*	83100
50	62.5	95.7	80800	71700
60	55.8	89.7	63600	55800
70	48.5	81.9	52100	45400
80	40.3	71.7	43800	37900
90	30.4	57.6	37600	32400
100	15.7	34.1	32800	28100
110 Ft. Boom				
25	78.9	114.9	153600*	153600*
30	76.2	113.8	137900*	137900*
35	73.5	112.5	117900*	117900*
40	70.8	110.9	102700*	98100
45	68.0	109.0	90800*	82800
50	65.1	106.8	80500	71400
60	59.2	101.5	63300	55500
70	53.0	94.8	51700	45000
80	46.1	86.3	43500	37600
90	38.4	75.3	37300	32000
100	29.0	60.3	32500	27700
110	15.0	35.5	28000	24300
120 Ft. Boom				
30	77.4	124.1	133600*	133600*
35	74.9	122.9	117400*	117400*
40	72.4	121.4	102200*	97900
45	69.9	119.7	90400*	82500
50	67.3	117.7	80200	71100
60	62.0	113.0	62900	55200
70	56.5	107.1	51400	44700
80	50.5	99.7	43100	37300
90	44.0	90.4	36900	31700
100	36.7	78.7	32100	27400
110	27.7	62.8	28200	23900
120	14.4	36.8	25100	21100
130 Ft. Boom				
30	78.4	134.3	125400*	125400*
35	76.1	133.2	116900*	116900*
40	73.8	131.8	101700*	97600
45	71.5	130.3	89900*	82200
50	69.2	128.5	79900	70800
60	64.4	124.2	62600	54900
70	59.4	118.9	51100	44400
80	54.1	112.3	42800	36900
90	48.4	104.3	36600	31400
100	42.2	94.4	31800	27000
110	35.2	81.9	27900	23600
120	26.6	65.2	24700	20800
130	13.8	38.0	22100	18400
140 Ft. Boom				
35	77.1	143.5	110400*	110400*
40	75.0	142.2	101300*	97300
45	72.9	140.8	89400*	81900
50	70.7	139.1	79600	70500
60	66.3	135.2	62300	54600
70	61.8	130.3	50700	44100
80	57.0	124.4	42500	36600
90	52.0	117.3	36200	31000
100	46.6	108.7	31400	26700
110	40.6	98.2	27500	23300
120	33.9	85.0	24400	20400
130	25.6	67.5	21700	18100
140	13.3	39.2	19500	16100

Boom Radius Feet	Boom Angle Degrees	Boom Peak Height Feet	With Outriggers	
			Over Rear	Over Side
150 Ft. Boom				
35	78.0	153.7	103600*	103600*
40	76.0	152.6	97900*	97000
45	74.0	151.2	88900*	81600
50	72.0	149.7	79200	70200
60	68.0	146.1	62000	54200
70	63.8	141.6	50400	43700
80	59.4	136.2	42100	36300
90	54.9	129.7	35900	30700
100	50.1	122.0	31100	26400
110	44.9	112.9	27200	22900
120	39.2	101.8	24000	20100
130	32.7	88.0	21400	17700
140	24.7	69.7	19100	15800
150	12.8	40.3	17200	14100
160 Ft. Boom				
40	76.9	162.8	91100*	91100*
45	75.1	161.6	86300*	81300
50	73.2	160.2	78800*	69900
60	69.4	156.8	61600	53900
80	61.5	147.7	41800	35900
100	53.0	134.8	30700	26000
120	43.4	116.9	23700	19700
140	31.6	90.9	18800	15400
160	12.4	41.4	15200	12200
170 Ft. Boom				
40	77.7	173.1	85700*	85700*
45	76.0	171.9	81200*	81000*
50	74.2	170.6	77000*	69600
60	70.7	167.4	61300	53600
80	63.4	158.9	41400	35600
100	55.5	147.1	30400	25700
120	46.9	131.0	23300	19400
140	36.7	108.7	18400	15100
160	23.2	74.0	14800	11900
180 Ft. Boom				
40	78.4	183.3	80600*	80600*
45	76.8	182.2	76300*	76300*
50	75.1	181.0	72100*	69300
60	71.8	178.0	61000	53300
80	64.9	170.1	41100	35300
100	57.7	159.1	30000	25300
120	49.8	144.4	23000	19000
140	40.8	124.6	18100	14700
160	29.8	96.4	14500	11500
180	11.7	43.6	11700	9100
190 Ft. Boom				
40	79.0	193.5	76100*	76100*
45	77.5	192.5	71600*	71600*
50	75.9	191.3	67000*	67000*
60	72.8	188.5	60600*	53000
80	66.3	181.0	40800	34900
100	59.6	170.8	29700	25000
120	52.3	157.3	22600	18700
140	44.2	139.4	17700	14400
160	34.7	115.1	14100	11200
180	21.9	78.0	11400	8800
200 Ft. Boom				
45	78.1	202.7	66600*	66600*
50	76.6	201.6	63000*	63000*
60	73.7	198.9	56900*	52700
80	67.6	191.9	40400	34600
100	61.2	182.3	29300	24600
120	54.5	169.7	22300	18400
140	47.1	153.4	17400	14000
160	38.6	131.8	13800	10800
180	28.2	101.5	11000	8400
200	11.1	45.5	8800	6500
210 Ft. Boom				
45	78.7	212.9	62800*	62800*
50	77.3	211.8	59500*	59500*
60	74.5	209.3	53500*	52400
80	68.7	202.7	40100	34300
100	62.7	193.6	29000	24300
120	56.4	181.9	21900	18000
140	49.5	166.8	17000	13700
160	41.9	147.3	13400	10500
180	32.9	121.2	10600	8000
200	20.8	81.7	8500	6100

**LONG TAPERED PEAK BOOM: WITH MAXIMUM COUNTERWEIGHT 68,600 lbs (31117 kg)
& BUMPER COUNTERWEIGHT 16,000 lbs (7258 kg)**

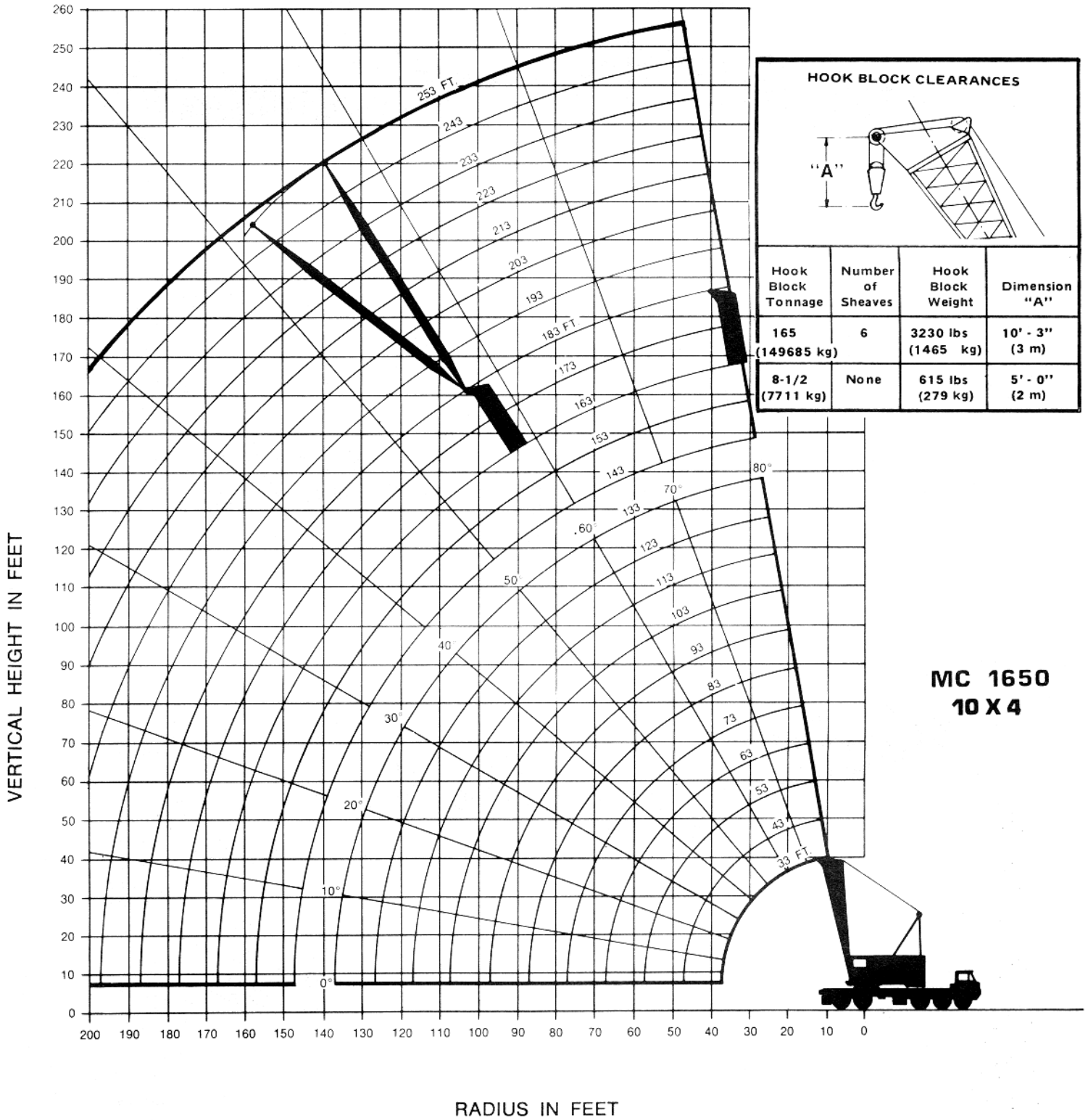
Maximum Rated Load in Pounds

Boom Radius Feet	Boom Angle Degrees	Boom Peak Height Feet	With Outriggers	
			Over Rear	Over Side
220 Ft. Boom				
50	77.9	222.1	56000*	56000*
60	75.2	219.7	50600*	50600*
80	69.7	213.4	38800*	33900*
100	64.1	204.8	28600*	24000*
120	58.1	193.8	21500*	17700*
140	51.7	179.7	16600*	13300*
160	44.7	161.9	13000*	10100*
180	36.8	138.7	10300*	7700*
200	26.9	106.4	8100*	5800*
220	10.6	47.4	6300*	4200*
230 Ft. Boom				
50	78.4	232.3	53100*	53100*
60	75.8	230.0	45600*	45600*
80	70.6	224.0	35000*	33600*
100	65.3	215.9	28300*	23600*
120	59.6	205.5	21200*	17300*
140	53.7	192.3	16300*	13000*
160	47.2	175.8	12700*	9800*
180	40.0	154.8	9900*	7300*
200	31.4	126.9	7700*	5400*
220	19.9	85.3	6000*	3900*
240 Ft. Boom				
50	78.9	242.5	50000*	50000*
60	76.4	240.3	43100*	43100*
80	71.5	234.6	32900*	32900*
100	66.4	226.9	27000*	23300*
120	61.0	217.0	20800*	17000*
140	55.4	204.6	15900*	12600*
160	49.4	189.2	12300*	9400*
180	42.7	169.9	9600*	7000*
200	35.1	145.2	7400*	5100*
220	25.7	111.1	5600*	3500*
240	10.1	49.3	4200*	
250 Ft. Boom				
55	78.2	251.7	43100*	43100*
60	77.0	250.6	40300*	40300*
80	72.2	245.1	31900*	31900*
100	67.4	237.7	24700*	22900*
120	62.3	228.3	19200*	16600*
140	57.0	216.6	15200*	12200*
160	51.3	202.2	12000*	9100*
180	45.2	184.3	9200*	6600*
200	38.3	161.9	7000*	4700*
220	30.1	132.4	5300*	3100*
240	19.1	88.8	3800*	
260 Ft. Boom				
55	78.6	261.9	40800*	40800*
60	77.5	260.8	38100*	38100*
80	72.9	255.6	30200*	30200*
100	68.3	248.5	21600*	21600*
120	63.4	239.6	17600*	16300*
140	58.4	228.4	14400*	11900*
160	53.1	214.8	11200*	8700*
180	47.3	198.1	8800*	6300*
200	41.0	177.5	6700*	4300*
220	33.7	151.3	4900*	
240	24.7	115.6	3300*	
270 Ft. Boom				
55	79.1	272.1	38500*	38500*
60	78.0	271.1	36000*	36000*
80	73.6	266.0	28300*	28300*
100	69.1	259.3	20000*	20000*
120	64.5	250.7	16200*	15900*
140	59.7	240.1	13000*	11500*
160	54.6	227.2	10100*	8300*
180	49.2	211.5	7700*	5900*
200	43.4	192.4	5600*	4000*
220	36.8	168.7	4100*	

Boom Radius Feet	Boom Angle Degrees	Boom Peak Height Feet	With Outriggers	
			Over Rear	Over Side
280 Ft. Boom				
60	78.4	281.3	33800*	33800*
80	74.2	276.4	26100*	26100*
100	69.9	269.9	18500*	18500*
120	65.5	261.7	14700*	14700*
140	60.9	251.6	11500*	11200*
160	56.1	239.3	8700*	8000*
180	51.0	224.6	6600*	5500*
200	45.5	206.7	4600*	3600*
220	39.4	184.9	3000*	
Following Load Ratings Include Jib				
290 Ft. Boom				
60	78.8	291.5	30000*	30000*
80	74.8	286.8	20000*	20000*
100	70.6	280.6	17000*	17000*
120	66.4	272.7	13300*	13300*
140	62.0	263.0	10300*	10300*
160	57.4	251.3	7500*	7500*
180	52.6	237.3	5500*	5200*
200	47.4	220.5	3600*	3300*
300 Ft. Boom				
60	79.2	301.7	30000*	30000*
80	75.3	297.1	20000*	20000*
100	71.3	291.1	15400*	15400*
120	67.2	283.6	11600*	11600*
140	63.0	274.3	8900*	8900*
160	58.6	263.1	6500*	6500*
180	54.0	249.8	4300*	4300*
310 Ft. Boom				
60	79.5	311.9	28200*	28200*
80	75.8	307.5	19200*	19200*
100	71.9	301.7	14700*	14700*
120	68.0	294.4	10600*	10600*
140	63.9	285.5	7600*	7600*
160	59.7	274.7	5400*	5400*
180	55.4	262.0	3300*	3300*
320 Ft. Boom				
60	79.9	322.0	22000*	22000*
80	76.2	317.8	14000*	14000*
100	72.5	312.2	13200*	13200*
120	68.7	305.1	9100*	9100*
140	64.8	296.5	6500*	6500*
160	60.8	286.3	4100*	4100*
330 Ft. Boom				
60	80.2	332.2	15000*	15000*
80	76.6	328.1	10000*	10000*
100	73.0	322.7	10000*	10000*
120	69.4	315.8	8200*	8200*
140	65.6	307.6	5400*	5400*
160	61.7	297.7	3100*	3100*
340 Ft. Boom				
60	80.5	342.3	12000*	12000*
80	77.0	338.3	8000*	8000*
100	73.6	333.1	8000*	8000*
120	70.0	326.5	6900*	6900*
140	66.4	318.5	4000*	4000*
350 Ft. Boom				
60	80.8	352.5	10000*	10000*
80	77.4	348.6	7000*	7000*
100	74.0	343.5	7000*	7000*
110	72.3	340.5	7000*	7000*
120	70.6	337.1	5700*	5700*

HAMMERHEAD PEAK BOOM

RANGE DIAGRAM:



HAMMERHEAD PEAK BOOM
WITH MAXIMUM COUNTERWEIGHT 68,600 lbs (31117 kg)
& BUMPER COUNTERWEIGHT 16,000 lbs (7258 kg)

CAPACITY CHART: Maximum Rated Load in Pounds

Boom Radius Feet	Boom Angle Degrees	Boom Peak Height Feet	With Outriggers	
			Over Rear	Over Side
33 Ft. Boom				
12	82.2	39.2	330000*	330000*
15	76.8	38.3	273900*	273900*
20	67.3	36.0	208100*	208100*
25	56.8	32.5	167300*	167300*
30	44.4	27.4	139600*	139600*
35	26.4	18.3	119500*	119500*
43 Ft. Boom				
15	80.0	48.7	273300*	273300*
20	73.0	47.0	207600*	207600*
25	65.6	44.6	166800*	166800*
30	57.6	41.3	139000*	139000*
35	48.7	36.8	118900*	118900*
40	38.0	30.4	103700*	97700*
45	22.2	19.7	91800*	82500*
53 Ft. Boom				
15	81.9	58.9	247000*	247000*
20	76.3	57.6	207000*	207000*
25	70.5	55.7	166200*	166200*
30	64.5	53.2	138500*	138500*
35	58.1	50.0	118400*	118400*
40	51.1	45.9	103200*	97500*
45	43.2	40.5	91300*	82200*
50	33.6	33.2	80100*	70900*
63 Ft. Boom				
20	78.5	68.0	191900*	191900*
25	73.8	66.4	153500*	153500*
30	68.9	64.4	138000*	138000*
35	63.8	61.8	117900*	117900*
40	58.4	58.7	102700*	97200*
45	52.7	54.8	90700*	81900*
50	46.3	49.9	79800*	70600*
60	30.4	35.6	62600*	54800*
73 Ft. Boom				
20	80.1	78.3	191400*	191400*
25	76.1	76.9	153100*	153100*
30	71.9	75.2	137400*	137400*
35	67.7	73.1	117400*	117400*
40	63.3	70.5	102200*	96900*
45	58.6	67.3	90200*	81600*
50	53.7	63.6	79500*	70300*
60	42.7	53.7	62300*	54500*
70	28.0	37.9	50800*	44100*
83 Ft. Boom				
20	81.4	88.5	184700*	184700*
25	77.8	87.3	152300*	152300*
30	74.2	85.8	136900*	136900*
35	70.5	84.0	116900*	116900*
40	66.8	81.8	101700*	96700*
45	62.9	79.1	89700*	81400*
50	58.8	76.0	79200*	70000*
60	50.0	68.2	62000*	54200*
70	39.8	57.1	50500*	43700*
80	26.0	40.0	42200*	36300*
93 Ft. Boom				
25	79.2	97.6	151800*	151800*
30	76.0	96.3	136400*	136400*
35	72.7	94.7	116300*	116300*
40	69.4	92.7	101200*	96400*
45	66.0	90.4	89200*	81100*
50	62.6	87.8	78900*	69700*
60	55.2	81.2	61700*	53900*
70	47.0	72.4	50100*	43400*
80	37.3	60.4	41900*	36000*
90	24.4	42.0	35700*	30500*

Boom Radius Feet	Boom Angle Degrees	Boom Peak Height Feet	With Outriggers	
			Over Rear	Over Side
103 Ft. Boom				
25	80.2	107.9	149800*	149800*
30	77.4	106.7	135900*	135900*
35	74.5	105.2	115800*	115800*
40	71.5	103.5	100600*	96100*
45	68.5	101.5	88700*	80800*
50	65.5	99.1	78600*	69400*
60	59.0	93.4	61300*	53600*
70	52.1	86.0	49800*	43100*
80	44.4	76.4	41600*	35700*
90	35.3	63.4	35400*	30100*
100	28.1	43.9	30600*	25800*
113 Ft. Boom				
25	81.1	118.0	140900*	140900*
30	78.5	117.0	131300*	131300*
35	75.9	115.7	115300*	115300*
40	73.2	114.1	100100*	95900*
45	70.5	112.3	88200*	80500*
50	67.8	110.2	78200*	69100*
60	62.1	105.1	61000*	53200*
70	56.1	98.6	49500*	42800*
80	49.5	90.5	41200*	35300*
90	42.2	80.1	35000*	29800*
100	33.6	66.3	30200*	25500*
110	21.9	45.7	26300*	22000*
123 Ft. Boom				
30	79.5	127.2	123400*	123400*
35	77.1	126.0	114800*	114800*
40	74.6	124.6	99600*	95600*
45	72.2	122.9	87700*	80200*
50	69.7	121.0	77900*	68800*
60	64.6	116.5	60700*	52900*
70	59.2	110.7	49100*	42400*
80	53.5	103.6	40900*	35000*
90	47.3	94.8	34700*	29400*
100	40.3	83.7	29900*	25100*
110	32.1	69.1	26000*	21700*
120	20.9	47.4	22800*	18900*
133 Ft. Boom				
30	80.3	137.4	116800*	116800*
35	78.1	136.3	108600*	108600*
40	75.8	135.0	99100*	95300*
45	73.6	133.5	87200*	79900*
50	71.3	131.8	77600*	68500*
60	66.6	127.6	60400*	52600*
70	61.8	122.4	48800*	42100*
80	56.7	116.0	40500*	34700*
90	51.2	108.3	34300*	29100*
100	45.3	98.9	29500*	24800*
110	38.7	87.1	25600*	21300*
120	30.8	71.7	22500*	18500*
130	20.0	49.0	19800*	16200*
143 Ft. Boom				
35	78.9	146.6	102400*	102400*
40	76.8	145.4	96300*	95100*
45	74.8	144.0	86700*	79700*
50	72.7	142.4	77200*	68200*
60	68.4	138.5	60000*	52300*
70	63.9	133.8	48500*	41800*
80	59.3	128.0	40200*	34300*
90	54.4	121.1	34000*	28800*
100	49.2	112.8	29200*	24400*
110	43.6	102.8	25300*	21000*
120	37.2	90.4	22100*	18200*
130	29.6	74.3	19500*	15800*
140	19.3	50.6	17200*	13900*

HAMMERHEAD PEAK BOOM
WITH MAXIMUM COUNTERWEIGHT 68,600 lbs (31117 kg)
& BUMPER COUNTERWEIGHT 16,000 lbs (7258 kg)

Maximum Rated Load in Pounds

Boom Radius Feet	Boom Angle Degrees	Boom Peak Height Feet	With Outriggers	
			Over Rear	Over Side
153 Ft. Boom				
35	79.6	156.8	96400*	96400*
40	77.7	155.7	90200*	90200*
45	75.8	154.4	85500*	79400
50	73.8	152.9	76700*	67900
60	69.9	149.3	59700	52000
70	65.8	145.0	48100	41500
80	61.5	139.7	39900	34000
90	57.1	133.4	33600	28400
100	52.5	126.0	28800	24100
110	47.5	117.2	24900	20700
120	42.0	106.5	21800	17800
130	35.8	93.5	19100	15500
140	28.5	76.7	16900	13500
150	18.6	52.1	15000	11800
163 Ft. Boom				
40	78.5	166.0	85100*	85100*
45	76.7	164.7	80400*	79100
50	74.9	163.3	76200*	67600
60	71.2	160.0	59400	51700
80	63.5	151.1	39500	33700
100	55.2	138.6	28500	23800
120	45.9	121.3	21400	17500
140	34.7	96.6	16500	13200
160	17.9	53.6	12900	10000
173 Ft. Boom				
40	79.2	176.2	80200*	80200*
45	77.5	175.1	76000*	76000*
50	75.8	173.7	72600*	67300
60	72.3	170.6	59100	51400
80	65.1	162.3	39200	33300
100	57.5	150.8	28100	23400
120	49.1	135.2	21100	17100
140	39.3	113.7	16200	12800
160	26.7	81.4	12600	9600
183 Ft. Boom				
40	79.8	186.4	75800*	75800*
45	78.2	185.3	72200*	72200*
50	76.6	184.1	66900*	66900*
60	73.3	181.2	58700	51100
80	66.6	173.4	38800	33000
100	59.5	162.7	27800	23100
120	51.8	148.4	20700	16800
140	43.1	129.2	15800	12400
160	32.6	102.3	12200	9300
180	16.8	56.4	9500	6900
Following Load Ratings Include Jib				
193 Ft. Boom				
40	80.3	196.6	30000*	30000*
45	78.8	195.6	30000*	30000*
50	77.3	194.4	30000*	30000*
60	74.2	191.7	30000*	30000*
80	67.9	184.3	20000*	20000*
100	61.2	174.3	20000*	20000*
120	54.1	161.1	20000*	17700
140	46.2	143.7	16700	13300
160	37.1	120.4	13100	10200
180	25.2	85.7	10300	7700
203 Ft. Boom				
45	79.4	205.8	30000*	30000*
50	77.9	204.7	30000*	30000*
60	75.0	202.1	30000*	30000*
80	69.0	195.2	20000*	20000*
100	62.8	185.8	20000*	20000*
120	56.1	173.5	20000*	17300
140	48.9	157.5	16300	12900
160	40.8	136.7	12700	9800
180	30.8	107.8	9900	7300
200	15.9	59.1	7800	5400

Boom Radius Feet	Boom Angle Degrees	Boom Peak Height Feet	With Outriggers	
			Over Rear	Over Side
213 Ft. Boom				
45	79.9	216.0	30000*	30000*
50	78.5	215.0	30000*	30000*
60	75.7	212.5	30000*	30000*
80	70.1	205.9	20000*	20000*
100	64.2	197.1	20000*	20000*
120	58.0	185.5	20000*	16900
140	51.3	170.8	15800	12500
160	43.8	151.8	12200	9300
180	35.2	126.7	9500	6900
200	23.9	89.9	7300	5000
223 Ft. Boom				
45	80.3	226.2	22000*	22000*
50	79.0	225.2	22000*	22000*
60	76.4	222.8	22000*	22000*
80	71.0	216.6	14000*	14000*
100	65.4	208.2	14000*	14000*
120	59.6	197.3	14000*	14000*
140	53.3	183.6	14000*	12700
160	46.5	166.2	12400	9500
180	38.8	143.7	9600	7000
200	29.3	113.0	7500	5100
220	15.1	61.6	5700	3600
233 Ft. Boom				
50	79.5	235.4	15000*	15000*
60	77.0	233.1	15000*	15000*
80	71.8	227.2	10000*	10000*
100	66.5	219.2	10000*	10000*
120	61.0	209.0	10000*	10000*
140	55.2	196.0	10000*	10000*
160	48.8	179.9	10000*	9700
180	41.8	159.4	9800	7200
200	33.6	132.7	7700	5300
220	22.8	93.8	5900	3800
243 Ft. Boom				
50	79.9	245.6	12000*	12000*
60	77.5	243.4	12000*	12000*
80	72.6	237.8	8000*	8000
100	67.6	230.2	8000*	8000*
120	62.3	220.4	8000*	8000*
140	56.8	208.2	8000*	8000*
160	50.9	193.1	8000*	8000*
180	44.4	174.3	8000*	7400
200	37.0	150.4	7800	5500
220	28.0	117.9	6100	4000
240	14.5	64.0	4100	
253 Ft. Boom				
50	80.3	255.8	10000*	10000*
60	78.0	253.7	10000*	10000*
80	73.3	248.3	7000*	7000*
100	68.5	241.0	7000*	7000*
120	63.5	231.7	7000*	7000*
140	58.3	220.2	7000*	7000*
160	52.7	206.0	7000*	7000*
180	46.7	188.5	7000*	7000*
200	40.0	166.7	7000*	5700
220	32.1	138.4	6300	4200
240	21.8	97.6	4200*	

Note: Special Application

LONG TAPERED PEAK BOOM WITH STANDARD COUNTERWEIGHT 24,100 lbs (10932 kg)

CAPACITY CHART: Maximum Rated Load in Pounds

Boom Radius Feet	Boom Angle Degrees	Boom Peak Height Feet	With Outriggers		Without Outriggers	
			Over Rear	Over Side	Over Rear	Over Side
90 Ft. Boom						
20	79.6	95.5	170200 *	170200 *	61200	55300
25	76.3	94.5	121400	121400	45800	40600
30	73.0	93.1	90100	90100	36200	31700
40	66.2	89.4	58000	58000	24800	21200
50	59.1	84.2	41700	41700	18300	15400
60	51.3	77.3	32000	32000	14000	11600
70	42.6	67.9	25600	25600	11100	9000
80	32.1	54.8	21100	21100	8900	7000
90	16.6	32.7	17700	17700	7200	5500
100 Ft. Boom						
25	77.7	104.7	121200	121200	45400	40300
30	74.8	103.5	88900	88900	35800	31300
40	68.7	100.2	57800	57800	24400	20900
50	62.5	95.7	41400	41400	17900	15000
60	55.8	89.7	31700	31700	13700	11200
70	48.5	81.9	25300	25300	10700	8600
80	40.3	71.7	20800	20800	8500	6700
90	30.4	57.6	17400	17400	6900	5200
100	15.7	34.1	14700	14700	5500	4000
110 Ft. Boom						
25	78.9	114.9	121000	121000	45100	39900
30	76.2	113.8	89700	89700	35500	31000
40	70.8	110.9	57500	57500	24100	20500
50	65.1	106.8	41100	41100	17500	14700
60	59.2	101.5	31400	31400	13300	10900
70	53.0	94.8	25000	25000	10400	8300
80	46.1	86.3	20500	20500	8200	6300
90	38.4	75.3	17100	17100	6500	4800
100	29.0	60.3	14400	14400	5200	3700
110	15.0	35.5	12300	12300	4100	
120 Ft. Boom						
30	77.4	124.1	89400	89400	35100	30600
40	72.4	121.4	57300	57300	23700	20200
50	67.3	117.7	40800	40800	17200	14300
60	62.0	113.0	31100	31100	13000	10500
70	56.5	107.1	24700	24700	10000	7900
80	50.5	99.7	20100	20100	7800	6000
90	44.0	90.4	16700	16700	6100	4500
100	36.7	78.7	14100	14100	4800	3300
110	27.7	62.8	12000	12000	3700	
120	14.4	36.8	10300	10300		
130 Ft. Boom						
30	78.4	134.3	89200	89200	34700	30300
40	73.8	131.8	57000	57000	23400	19900
50	69.2	128.5	40600	40600	16800	14000
60	64.4	124.2	30800	30800	12600	10200
70	59.4	118.9	24400	24400	9700	7600
80	54.1	112.3	19800	19800	7500	5600
90	48.4	104.3	16400	16400	5800	4100
100	42.2	94.4	13800	13800	4500	3000
110	35.2	81.9	11700	11700	3400	
120	26.6	65.2	9900	9900		
130	13.8	38.0	8500	8500		
140 Ft. Boom						
35	77.1	143.5	69900	69900	27800	23900
40	75.0	142.2	56800	56800	23000	19500
50	70.7	139.1	40300	40300	16500	13600
60	66.3	135.2	30500	30500	12300	9900
70	61.8	130.3	24100	24100	9300	7200
80	57.0	124.4	19500	19500	7100	5300
90	52.0	117.3	16100	16100	5400	3800
100	46.6	108.7	13500	13500	4100	
110	40.6	98.2	11200	11200		
120	33.9	85.0	9600	9600		
130	25.6	67.5	8200	8200		
140	13.3	39.2	7000	7000		

Boom Radius Feet	Boom Angle Degrees	Boom Peak Height Feet	With Outriggers		Without Outriggers	
			Over Rear	Over Side	Over Rear	Over Side
150 Ft. Boom						
35	78.0	153.7	69700	69700	27400	23500
40	76.0	152.6	56500	56500	22700	19200
50	72.0	149.7	40000	40000	16100	13300
60	68.0	146.1	30300	30300	11900	9500
70	63.8	141.6	23800	23800	9000	6900
80	59.4	136.2	19200	19200	6800	4900
90	54.9	129.7	15800	15800	5100	3500
100	50.1	122.0	13200	13200	3800	
110	44.9	112.9	11000	11000		
120	39.2	101.8	9300	9300		
130	32.7	88.0	7900	7900		
140	24.7	69.7	6700	6700		
150	12.8	40.3	5600	5600		
160 Ft. Boom						
40	76.9	162.8	56300	56300	22300	18800
50	73.2	160.2	39700	39700	15800	12900
60	69.4	156.8	30000	30000	11600	9200
80	61.5	147.7	18900	18900	6400	4600
100	53.0	134.8	12800	12800	3400	
120	43.4	116.9	9000	9000		
140	31.6	90.9	6300	6300		
160	12.4	41.4	4400	4400		
170 Ft. Boom						
40	77.7	173.1	56000	56000	21900	18500
50	74.2	170.6	39500	39500	15400	12600
60	70.7	167.4	29700	29700	11200	8800
80	63.4	158.9	18600	18600	6100	4200
100	55.5	147.1	12500	12500	3100	
120	46.9	131.0	8700	8700		
140	36.7	108.7	6000	6000		
160	23.2	74.0	4100	4100		
170	12.1	42.5	3300	3300		
180 Ft. Boom						
40	78.4	183.3	55800	55800	21600	18100
50	75.1	181.0	39200	39200	15100	12200
60	71.8	178.0	29400	29400	10900	8500
80	64.9	170.1	18300	18300	5700	3900
100	57.7	159.1	12200	12200		
120	49.8	144.4	8300	8300		
140	40.8	124.6	5700	5700		
160	29.8	96.4	3700	3700		
190 Ft. Boom						
40	79.0	193.5	55500	55500	12100	17800
50	75.9	191.3	38900	38900	14700	11900
60	72.8	188.5	29100	29100	10500	8100
80	66.3	181.0	18000	18000	5400	3600
100	59.6	170.8	11900	11900		
120	52.3	157.3	8000	8000		
140	44.2	139.4	5300	5300		
160	34.7	115.1	3400	3400		
200 Ft. Boom						
45	78.1	202.7	45700	45700	17200	14100
50	76.6	201.6	38600	38600	14400	11600
60	73.7	198.9	28800	28800	10200	7800
80	67.6	191.9	17700	17700	5000	3200
100	61.2	182.3	11600	11600		
120	54.5	169.7	7700	7700		
140	47.1	153.4	5000	5000		

Note: Special Application

LONG TAPERED PEAK BOOM WITH STANDARD COUNTERWEIGHT 24,100 lbs (10932 kg)

Maximum Rated Load in Pounds

Boom Radius Feet	Boom Angle Degrees	Boom Peak Height Feet	With Outriggers		Without Outriggers	
			Over Rear	Over Side	Over Rear	Over Side
210 Ft. Boom						
45	78.7	212.9	45500	45500	16900	13800
50	77.3	211.8	38400	38400	14000	11200
60	74.5	209.3	28500	28500	9800	7400
80	68.7	202.7	17400	17400	4700	
100	62.7	193.6	11200	11200		
120	56.4	181.9	7400	7400		
140	49.5	166.8	4700	4700		
220 Ft. Boom						
50	77.9	222.1	38100	38100	13700	10900
60	75.2	219.7	28200	28200	9500	7100
80	69.7	213.4	17100	17100	4300	
100	64.1	204.8	10900	10900		
120	58.1	193.8	7000	7000		
140	51.7	179.7	4400	4400		
230 Ft. Boom						
50	78.4	232.3	37700	37700	13100	10300
60	75.8	230.0	27800	27800	8900	6600
80	70.6	224.0	16700	16700	3800	
100	65.3	215.9	10600	10600		
120	59.6	205.5	6700	6700		
140	53.7	192.3	4000	4000		
240 Ft. Boom						
50	78.9	242.5	37400	37400	12700	9900
60	76.4	240.3	27500	27500	8500	6200
80	71.5	234.6	16400	16400	3500	
100	66.4	226.9	10200	10200		
120	61.0	217.0	6400	6400		
140	55.4	204.6	3700	3700		
250 Ft. Boom						
55	78.2	251.7	31600	31600	10100	7500
60	77.0	250.6	27300	27300	8200	5900
80	72.2	245.1	16100	16100	3100	
100	67.4	237.7	9900	9900		
120	62.3	228.3	6000	6000		
140	57.0	216.6	3300	3300		
Following Load Ratings Include Jib						
260 Ft. Boom						
55	78.6	261.9	30000*	30000*	9700	7200
60	77.5	260.8	27000	27000	7800	5500
80	72.9	255.6	15800	15800		
100	68.3	248.5	9600	9600		
120	63.4	239.6	5700	5700		
270 Ft. Boom						
55	79.1	272.1	15000*	15000*	9400	6900
60	78.0	271.1	15000*	15000*	7500	5200
80	73.6	266.0	10000*	10000*		
100	69.1	259.3	9300	9300		
120	64.5	250.7	5400	5400		
280 Ft. Boom						
60	78.4	281.3	10000*	10000*	7100	4800
80	74.2	276.4	7000*	7000*		
100	69.9	269.9	7000*	7000*		
120	65.5	261.7	5100	5100		

Note: Special Application

HAMMERHEAD PEAK BOOM WITH STANDARD COUNTERWEIGHT 24,100 lbs (10932 kg)

CAPACITY CHART: Maximum Rated Load in Pounds

Boom Radius Feet	Boom Angle Degrees	Boom Peak Height Feet	With Outriggers		Without Outriggers	
			Over Rear	Over Side	Over Rear	Over Side
33 Ft. Boom						
12	82.2	39.2	300000*		122900	117700
15	76.8	38.3	224500*	224500*	90100	83600
20	67.3	36.0	171300*	171300*	61600	55500
25	56.8	32.5	120600	120600	46200	40900
30	44.4	27.4	89600	89600	36600	32000
43 Ft. Boom						
15	80.0	48.7	224000*	224000*	89800	83400
20	73.0	47.0	170800*	170800*	61300	55300
25	65.6	44.6	120500	120500	45900	40600
30	57.6	41.3	89500	89500	36300	31700
40	38.0	30.4	57400	57400	24900	21300
53 Ft. Boom						
15	81.9	58.9	223800*	223800*	89500	83100
20	76.3	57.6	170400*	170400*	61000	55000
25	70.5	55.7	120400	120400	45600	40300
30	64.5	53.2	89300	89300	36000	31400
40	51.1	45.9	57200	57200	24600	21000
50	33.6	33.2	41000	41000	18000	15100
63 Ft. Boom						
20	78.5	68.0	170000*	170000*	60700	54700
25	73.8	66.4	120200	120200	45300	40100
30	68.9	64.4	89100	89100	35700	31100
40	58.4	58.7	57100	57100	24300	20700
50	46.3	49.9	40800	40800	17700	14800
60	30.4	35.6	31200	31200	13500	11000
73 Ft. Boom						
20	80.1	78.3	169500*	169500*	60400	54400
25	76.1	76.9	120100	120100	45000	39800
30	71.9	75.2	89000	89000	35400	30800
40	63.3	70.5	56900	56900	24000	20400
50	53.7	63.6	40600	40600	17400	14500
60	42.7	53.7	31000	31000	13200	10700
70	28.0	37.9	24600	24600	10300	8000
83 Ft. Boom						
20	81.4	88.5	169000	169000	60100	54100
25	77.8	87.3	120000	120000	44700	39500
30	74.2	85.8	88800	88800	35100	30500
40	66.8	81.8	56700	56700	23700	20100
50	58.8	76.0	40400	40400	17100	14200
60	50.0	68.2	30800	30800	12900	10300
70	39.8	57.1	24400	24400	10000	7600
80	26.0	40.0	19900	19900	7800	5700
93 Ft. Boom						
25	79.2	97.6	119900	119900	44400	39200
30	76.0	96.3	88700	88700	34800	30200
40	69.4	92.7	56500	56500	23400	19800
50	62.6	87.8	40200	40200	16800	13800
60	55.2	81.2	30500	30500	12600	10000
70	47.0	72.4	24200	24200	9700	7300
80	37.3	60.4	19600	19600	7500	5300
90	24.4	42.0	16200	16100	5800	3800
103 Ft. Boom						
25	80.2	107.9	119800	119800	44100	38900
30	77.4	106.7	88500	88500	34500	30000
40	71.5	103.5	56300	56300	23100	19500
50	65.5	99.1	40000	40000	16500	13500
60	59.0	93.4	30300	30300	12300	9600
70	52.1	86.0	23900	23900	9400	6900
80	44.4	76.4	19400	19300	7200	4900
90	35.3	63.4	16000	15800	5500	3400
100	23.1	43.9	13400	13100	4100	

Boom Radius Feet	Boom Angle Degrees	Boom Peak Height Feet	With Outriggers		Without Outriggers	
			Over Rear	Over Side	Over Rear	Over Side
113 Ft. Boom						
25	81.1	118.0	119700	119700	43800	38600
30	78.5	117.0	88300	88300	34200	29700
40	73.2	114.1	56200	56200	22800	19100
50	67.8	110.2	39800	39800	16200	13100
60	62.1	105.1	30100	30100	12000	9200
70	56.1	98.6	23700	23600	9100	6500
80	49.5	90.5	19100	18900	6900	4500
90	42.2	80.1	15700	15500	5200	3000
100	33.6	66.3	13100	12800	3800	
110	21.9	45.7	11000	10600		
123 Ft. Boom						
30	79.5	127.2	88200	88200	33900	29400
40	74.6	124.6	56000	56000	22500	18700
50	69.7	121.0	39600	39600	15900	12700
60	64.6	116.5	29900	29900	11700	8800
70	59.2	110.7	23400	23300	8800	6100
80	53.5	103.6	18900	18600	6600	4100
90	47.3	94.8	15500	15100	4800	
100	40.3	83.7	12800	12400	3400	
110	32.1	69.1	10700	10300		
120	20.9	47.4	9000	8500		
133 Ft. Boom						
30	80.3	137.4	88000	88000	33600	29100
40	75.8	135.0	55800	55800	22200	18400
50	71.3	131.8	39400	39400	15700	12300
60	66.6	127.6	29600	29500	11400	8500
70	61.8	122.4	23200	23000	8500	5800
80	56.7	116.0	18600	18300	6200	3800
90	51.2	108.3	15200	14800	4400	
100	45.3	98.9	12600	12100	3000	
110	38.7	87.1	10500	9900		
120	30.8	71.7	8800	8200		
130	20.0	49.0	7300	6700		
143 Ft. Boom						
35	78.9	146.6	68800	68800	26700	22500
40	76.8	145.4	55600	55600	21900	18000
50	72.7	142.4	39200	39200	15400	12000
60	68.4	138.5	29400	29200	11100	8100
70	63.9	133.8	23000	22600	8100	5400
80	59.3	128.0	18400	17900	5800	3400
90	54.4	121.1	15000	14500	4000	
100	49.2	112.8	12300	11700		
110	43.6	102.8	10200	9600		
120	37.2	90.4	8500	7800		
130	29.6	74.3	7100	6300		
140	19.3	50.6	5800	5100		
153 Ft. Boom						
35	79.6	156.8	68600	68600	26400	22100
40	77.7	155.7	55400	55400	21600	17600
50	73.8	152.9	39000	38900	15100	11600
60	69.9	149.3	29200	28900	10800	7700
70	65.8	145.0	22700	22300	7800	5000
80	61.5	139.7	18200	17600	5400	3000
90	57.1	133.4	14700	14100	3700	
100	52.5	126.0	12100	11400		
110	47.5	117.2	10000	9200		
120	42.0	106.5	8200	7500		
130	35.8	93.5	6800	6000		
140	28.5	76.7	5600	4700		
150	18.6	52.1	4500	3700		
163 Ft. Boom						
40	78.5	166.0	55300	55300	21300	17300
50	74.9	163.3	38700	38600	14800	11200
60	71.2	160.0	29000	28600	10500	7300
80	63.5	151.1	17900	17300	5100	
100	55.2	138.6	11800	11100		
120	45.9	121.3	8000	7100		
140	34.7	96.6	5300	4400		
160	17.9	53.6	3200			

Note: Special Application

HAMMERHEAD PEAK BOOM WITH STANDARD COUNTERWEIGHT 24,100 lbs (10932 kg)

Maximum Rated Load in Pounds

Boom Radius Feet	Boom Angle Degrees	Boom Peak Height Feet	With Outriggers		Without Outriggers	
			Over Rear	Over Side	Over Rear	Over Side
173 Ft. Boom						
40	79.2	176.2	55100	55100	21000	16900
50	75.8	173.7	38500	38300	14500	10800
60	72.3	170.6	28700	28300	10100	7000
80	65.1	162.3	17700	17000	4700	
100	57.5	150.8	11600	10700		
120	49.1	135.2	7700	6800		
140	39.3	113.7	5000	4000		
183 Ft. Boom						
40	79.8	186.4	54900	54900	20700	16500
50	76.6	184.1	38300	38000	14200	10500
60	73.3	181.2	28500	28000	9800	6600
80	66.6	173.4	17400	16600	4300	
100	59.5	162.7	11300	10400		
120	51.8	148.4	7400	6400		
140	43.1	129.2	4600	3700		
Following Load Ratings Include Jib						
193 Ft. Boom						
40	80.3	196.6	30000*	30000*	20400	16900
50	77.3	194.4	30000*	30000*	13900	11000
60	74.2	191.7	2830	28300	9600	7300
80	67.9	184.3	17200	17200	4500	
100	61.2	174.3	11100	11100		
120	54.1	161.1	7200	7200		
140	46.2	143.7	4500	4500		
160	37.1	120.4	3400			
203 Ft. Boom						
45	79.4	205.8	30000*	30000*	16400	13300
50	77.9	204.7	30000*	30000*	13600	10800
60	75.0	202.1	28100	28100	9400	7000
80	69.0	195.2	16900	16900	4200	
100	62.8	185.8	10800	10800		
120	56.1	173.5	6900	6900		
140	48.9	157.5	4200	4200		
160	40.8	136.7	3000			
213 Ft. Boom						
45	79.9	216.0	30000*	30000*	16100	13100
50	78.5	215.0	30000*	30000*	13300	10400
60	75.7	212.5	27800	27800	9100	6600
80	70.1	205.9	16700	16700	3900	
100	64.2	197.1	10500	10500		
120	58.0	185.5	6700	6500		
140	51.3	170.8	4000	3700		
223 Ft. Boom						
45	80.3	226.2	22000*	22000*	15800	12800
50	79.0	225.2	22000*	22000*	13000	10200
60	76.4	222.8	22000*	22000*	8800	6400
80	71.0	216.6	14000*	14000*	3600	
100	65.4	208.2	10300	10300		
120	59.6	197.3	6400	6400		
140	53.3	183.6	3700	3700		
233 Ft. Boom						
50	79.5	235.4	15000*	15000*	12700	9900
60	77.0	233.1	15000*	15000*	8500	6100
80	71.8	227.2	10000*	10000*	3300	
100	66.5	219.2	10000*	10000*		
120	61.0	209.0	6100	6100		
140	55.2	196.0	3400	3400		
243 Ft. Boom						
50	79.9	245.6	12000*	12000*	12000*	9600
60	77.5	243.4	12000*	12000*	8200	5800
80	72.6	237.8	8000*	8000*	3000	
100	67.6	230.2	8000*	8000*		
120	62.3	220.4	5900	5900		
253 Ft. Boom						
50	80.3	255.8	10000*	10000*	10000*	9300
60	78.0	253.7	10000*	10000*	7900	5500
80	73.3	248.3	7000*	7000*		
100	68.5	241.0	7000*	7000*		
120	63.5	231.7	5600	5600		

TRAVELING WEIGHTS:

TURNTABLE		** CTWT.	REAR OUTRIGGER	FRONT OUTRIGGER	BOOM PEAK	* BOOM BASE	TURNTABLE		GROSS WEIGHT
FACING FRONT							FACING REAR		
FRONT	REAR						FRONT	REAR	
20410	85720	0	0	0	0	0	46820	59310	~ 106130
29480	84110	0	0	0	0	X	39950	73640	113590
36060	81230	0	0	0	X	X	34470	82820	117290
40270	84720	0	0	X	X	X	38680	86310	124990
37985	94705	0	X	X	X	X	36395	96295	132690
27275	129515	X	X	X	X	X	54335	102455	156790
20695	132395	X	X	X	0	X	59815	93275	153090
31405	97585	0	X	X	0	X	41875	87115	128990
33690	87600	0	0	X	0	X	44160	77130	121290

**FOR MAXIMUM TRAVELING SPEED AXLE LOADINGS SHOULD NOT EXCEED 60,000 LBS.
FRONT TRIDEM AND 92,000 LBS. REAR BOGIE.**

* * Standard Counterweight Only

* = Includes boom base, floating harness, boom hoist cable & boom stops

X = Installed on machine

0 = Removed from machine

~ Includes main hoist cable and power load lowering both drums.

NOTE:

Manufacturer recommends removal of 16,000 lbs. bumper counterweight & 44,500 lbs. Max. counterweight for road travel. Therefore no listing is made.

1. Jibs may be used straight or offset. 30' jib is of two-piece design and may be extended to 70' with center sections.
The following data apply:

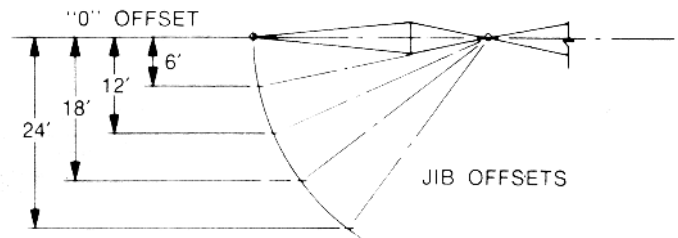
Jib Lgth.	Radius	Max. Lgth. of Boom Incl. Jib		Jib Offset and Max. Load Ratings (Lbs.)					Weight of Jib and Backstays
		Std. Ctw.	Max. Ctw.	0 Ft.	6 Ft.	12 Ft.	18 Ft.	24 Ft.	
30 Ft.	Up thru 70' Over 70'	260 ft.	310 Ft.	30000 20000	30000 20000	30000 20000			2230 Lbs.
40 Ft.	Up thru 70' Over 70'	260 ft.	320 Ft.	22000 14000	22000 14000	22000 14000	16000 10000		2600 Lbs.
50 Ft.	Up thru 70' Over 70'	270 ft.	330 Ft.	15000 10000	15000 10000	15000 10000	14000 9000	12000 8000	2810 Lbs.
60 Ft.	Up thru 70' Over 70'	270 ft.	340 Ft.	12000 8000	12000 8000	11000 7500	10000 7000	9000 6000	3150 Lbs.
70 Ft.	Up thru 70' Over 70'	280 ft.	350 Ft.	10000 7000	9000 6500	8000 6000	7000 5500	6000 4500	3400 Lbs.

2. Load ratings for the jibs are the same as for the boom length which is equal to the length of main boom plus jib but in no case may they exceed the capacities shown above.

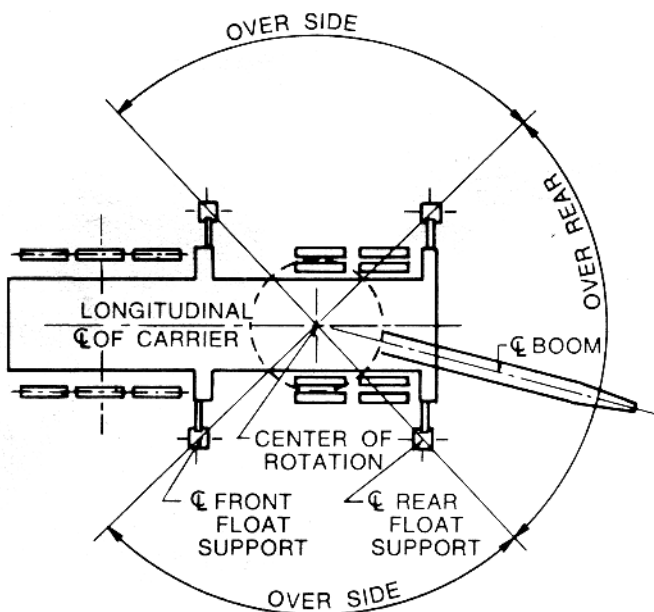
3. With jib installed, load ratings over main boom head must be reduced as follows:

2320 lbs. for 30 ft. jib
2750 lbs. for 40 ft. jib

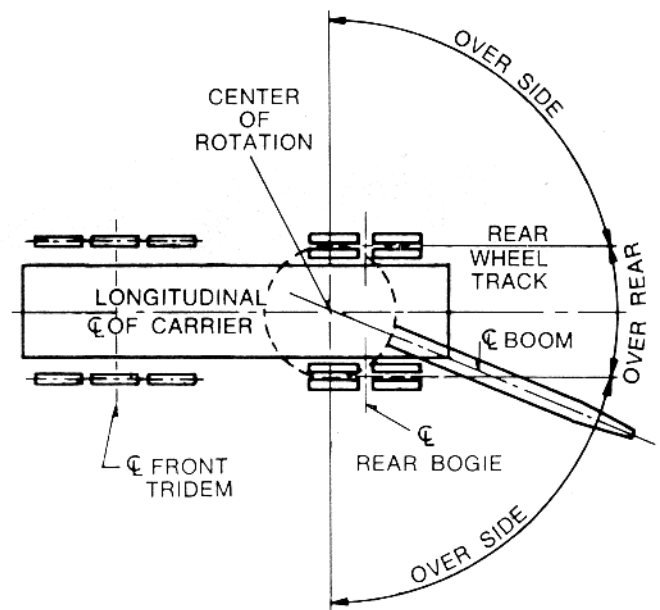
3020 lbs. for 50 ft. jib
3450 lbs. for 60 ft. jib
3750 lbs. for 70 ft. jib



CRANE WORKING AREAS



Carrier With Outrigger



Carrier Without Outriggers