

# 22/153

Articulating Crane



## ► 22/153 Articulating Crane

For exceptional strength, stability, and reach, choose an IMT® 22/153 articulating crane. Delivering a max lifting capacity of 17,065 lb (7740 kg) for the SL model and 17,550 lb (7960 kg) for the DL model, as well as a horizontal reach of 71 ft 2 in (21.7 m) for both, these compact cranes lift higher and farther. Their unique hexagonal boom design, innovative features and options, and the ability to stow within themselves make 22/153 cranes perfect for most any job site.



### 22/153SL Specifications

	2 - Hydraulic	3 - Hydraulic	4 - Hydraulic	5 - Hydraulic	6 - Hydraulic	7 - Hydraulic	8 - Hydraulic
<b>Crane Rating*</b>	148,275 ft-lb (20.5 tm)	144,660 ft-lb (20 tm)	140,320 ft-lb (19.4 tm)	137,425 ft-lb (19 tm)	133,810 ft lb (18.5 tm)	131,640 ft lb (18.2 tm)	128,745 ft lb (17.8 tm)
<b>Max Horizontal Reach</b>	27' 3" (8.3 m)	33' 10" (10.3 m)	41' (12.5 m)	48' 7" (14.8 m)	56' 5" (17.2 m)	63' 8" (19.4 m)	71' 2" (21.7 m)
<b>Max Vertical Reach</b>	35' 1" (10.7 m)	42' (12.8 m)	49' 3" (15 m)	56' 5" (17.2 m)	64' 4" (19.6 m)	71' 10" (21.9 m)	79' 1" (24.1 m)
<b>Max Capacity</b>	17,065 lb (7740 kg)	16,140 lb (7320 kg)	15,255 lb (6920 kg)	14,460 lb (6560 kg)	14,200 lb (6440 kg)	13,560 lb (6150 kg)	12,895 lb (5850 kg)
<b>Max Cap @ Max Reach</b>	5445 lb (2470 kg)	4055 lb (1840 kg)	3040 lb (1380 kg)	2295 lb (1040 kg)	1655 lb (750 kg)	1235 lb (560 kg)	880 lb (400 kg)
<b>Crane Weight **</b>	4180 lb (1895 kg)	4555 lb (2065 kg)	4995 lb (2265 kg)	5325 lb (2415 kg)	5635 lb (2555 kg)	5865 lb (2660 kg)	6050 lb (2745 kg)
<b>Hook Approach</b>							
Vertical	7' 3" (2.21 m)	7' 6" (2.29 m)	7' 10" (2.38 m)	8' 1" (2.47 m)	8' 5" (2.56 m)	8' 8" (2.65 m)	9' (2.74 m)
Horizontal	2' 3" (0.69 m)	2' 5" (0.74 m)	2' 7" (0.79 m)	2' 9" (0.84 m)	2' 11" (0.89 m)	3' 1" (0.94 m)	3' 3" (1 m)
<b>Center of Gravity - Stored</b>							
Vertical	2' 6" (770 mm)	2' 7" (785 mm)	2' 8" (815 mm)	2' 9" (835 mm)	2' 9" (845 mm)	2' 10" (875 mm)	2' 11" (890 mm)
Horizontal (C/L Rotation to Bridge)	13.6" (345 mm)	13.4" (340 mm)	12.8" (325 mm)	11.8" (300 mm)	11.8" (300 mm)	11.2" (285 mm)	11" (280 mm)

### 22/153DL Specifications

	2 - Hydraulic	3 - Hydraulic	4 - Hydraulic	5 - Hydraulic	6 - Hydraulic	7 - Hydraulic	8 - Hydraulic
<b>Crane Rating*</b>	149,000 ft-lb (20.6 tm)	145,385 ft lb (20.1 tm)	141,045 ft lb (19.5 tm)	138,150 ft lb (19.1 tm)	134,535 ft lb (18.6 tm)	132,365 ft lb (18.3 tm)	128,745 ft lb (17.8 tm)
<b>Max Horizontal Reach</b>	27' 3" (8.3 m)	33' 10" (10.3 m)	41' (12.5 m)	48' 7" (14.8 m)	56' 5" (17.2 m)	63' 8" (19.4 m)	71' 2" (21.7 m)
<b>Max Vertical Reach</b>	35' 1" (10.7 m)	42' (12.8 m)	49' 3" (15 m)	56' 5" (17.2 m)	64' 4" (19.6 m)	71' 10" (21.9 m)	79' 1" (24.1 m)
<b>Max Capacity</b>	17,550 lb (7960 kg)	16,820 lb (7630 kg)	16,115 lb (7310 kg)	15,475 lb (7020 kg)	14,880 lb (6750 kg)	14,330 lb (6500 kg)	13,800 lb (6260 kg)
<b>Max Cap @ Max Reach</b>	5465 lb (2480 kg)	4055 lb (1840 kg)	3040 lb (1380 kg)	2295 lb (1040 kg)	1655 lb (750 kg)	1235 lb (560 kg)	880 lb (400 kg)
<b>Crane Weight **</b>	4365 lb (1980 kg)	4740 lb (2150 kg)	5180 lb (2350 kg)	5510 lb (2500 kg)	5820 lb (2640 kg)	6050 lb (2745 kg)	6240 lb (2830 kg)
<b>Hook Approach</b>							
Vertical	7' 3" (2.21 m)	7' 6" (2.29 m)	7' 10" (2.38 m)	8' 1" (2.47 m)	8' 5" (2.56 m)	8' 8" (2.65 m)	9' (2.74 m)
Horizontal	2' 3" (0.69 m)	2' 5" (0.74 m)	2' 7" (0.79 m)	2' 9" (0.84 m)	2' 11" (0.89 m)	3' 1" (0.94 m)	3' 3" (1 m)
<b>Center of Gravity - Stored</b>							
Vertical	2' 7" (795 mm)	2' 8" (820 mm)	2' 9" (840 mm)	2' 10" (855 mm)	2' 10" (855 mm)	2' 11" (890 mm)	3' (910 mm)
Horizontal (C/L Rotation to Bridge)	13" (330 mm)	12.8" (325 mm)	12.2" (310 mm)	11.8" (300 mm)	11.4" (290 mm)	10.8" (275 mm)	10.6" (270 mm)

\* Crane rating (ft-lb) is the rated load (lb) multiplied by the respective distance (ft) from centerline of rotation with all extensions retracted and the inner and outer booms in a horizontal position, per ANSI B30.22. \*\* Crane weight does not include stabilizers.

## Standard Features

- Application-specific product offering
- Superior lift-to-weight ratio
- Long-reach capabilities
- Hexagonal booms for superior reach and maximum control
- Internal hose routing
- 15° overbending on outer boom

## Options

- Radio remote control
- Various stabilizer configurations
- Double link arm system
- Boom mounted winch
- Floodlight on outer boom
- Boom tip functions for hydraulic attachments
- Oil cooler

## Specifications

<b>Stabilizer Pad Diameter</b>	7" (175 mm)
<b>Crane Storage Height</b>	7' 6" (2295 mm)
<b>Mounting Space<sup>***</sup></b>	2' 11" (880 mm)
<b>Rotational Torque</b>	19,990 ft-lb (2.8 tm)
<b>Rotation</b>	400°
<b>Optimum Pump Performance</b>	15.9 gpm (60 L/min)
<b>System Pressure</b>	4350 psi (300 bar)
<b>Oil Reservoir Capacity</b>	23.8 gal (90 L)
<b>Stabilizer Extension Span</b>	
Standard (manual out/hydraulic down) Weight	18' 3" (5575 mm) 640 lb (290 kg)
Option (hydraulic out/hydraulic down) Weight	21' 2" (6455 mm) 805 lb (365 kg)

<sup>\*\*\*</sup> Maximum swing clearance radius required is 24" (600 mm) at 7' 10" (2375 mm) from top of chassis frame.

## Minimum Chassis Specifications

<b>Front Axle Rating (GAWR)</b>	14,000 lb (6350 kg)
<b>Rear Axle Rating (GAWR)</b>	40,000 lb (18,145 kg)
<b>Resistance to Bending Moment Minimum</b>	2,300,000 in-lb (264,990 kg-m)

## Hexagonal Boom Design

A wide hexagonal profile with large bearing surfaces ensures greater strength and stability for horizontal and vertical spans — even when working in extreme positions with long reaches. Plus, it's protected by powdercoat paint that never fades, flakes, or corrodes.



### Internal Hose Routing

Fed internally through protective nylon drag chains or roller guides, all hoses are equipped with sturdy, high-pressure swivel couplings to prevent them from twisting.



### Overbending

Overbending between the main boom and jib provides greater flexibility when working under power wires and more potential for high lifting in narrow passages. It also lowers the total height when the loader is stowed over the truck body.



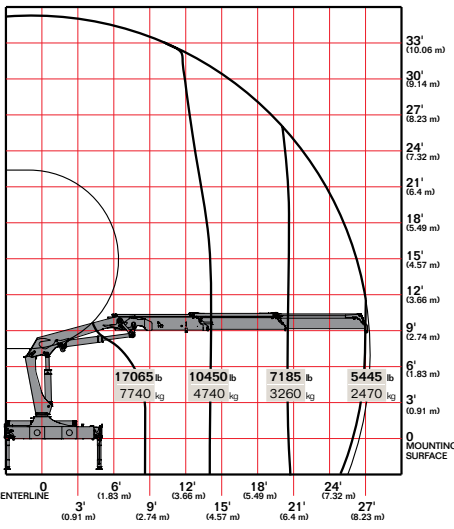
### Stow Bracket Innovation

The stow bracket is designed to secure the boom for transport position but not allow for bracket damage. Unlike systems with rigid fixed brackets, the "J" hook will pivot if an incorrect movement is attempted.

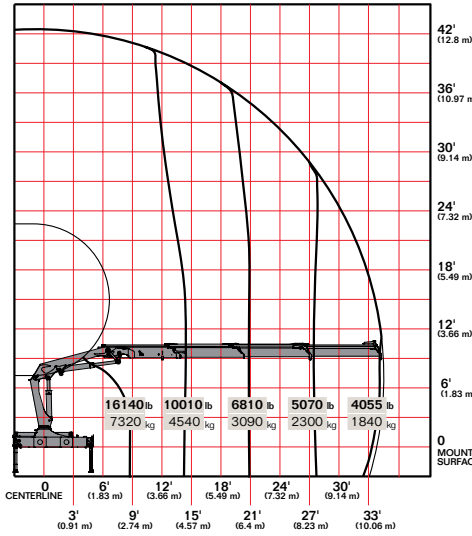


# ▶ 22/153SL Capacity Charts

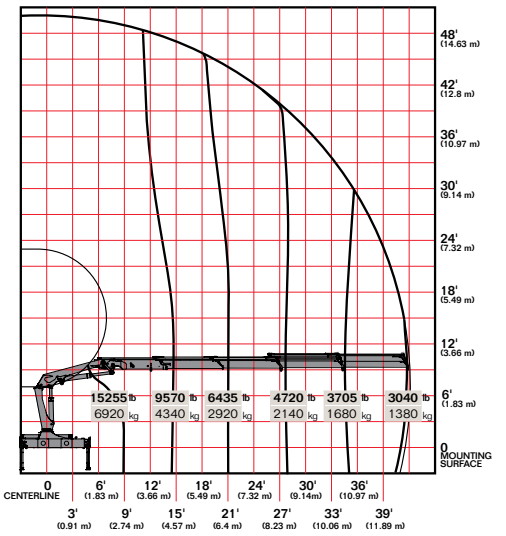
## 22/153SL K2



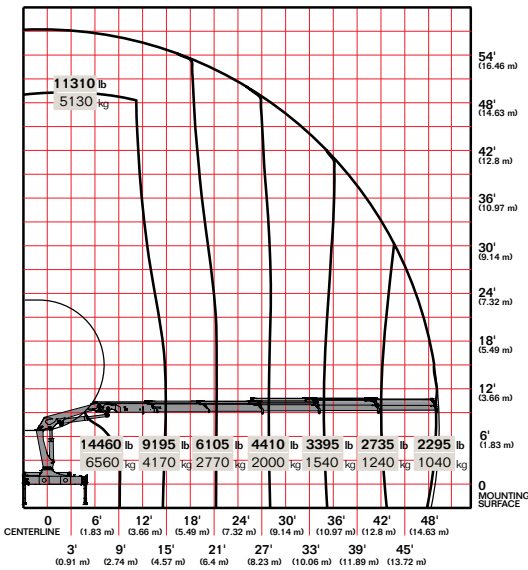
## 22/1538SL K3



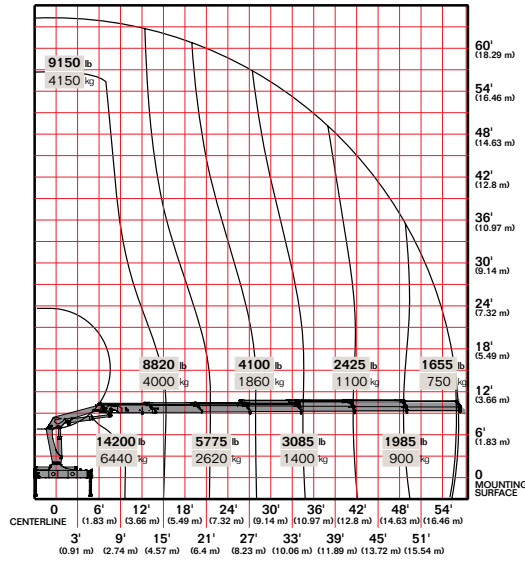
## 22/153SL K4



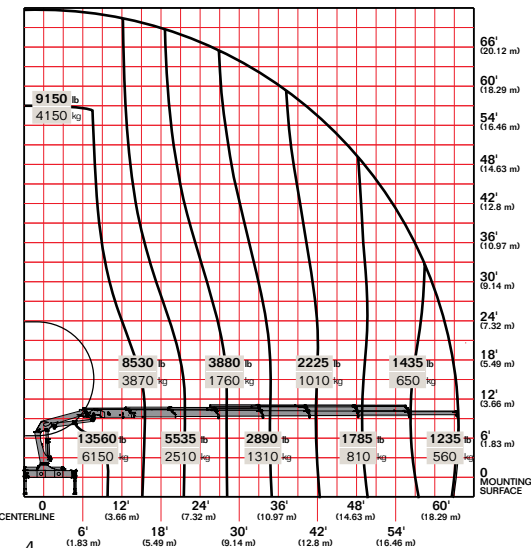
## 22/153SL K5



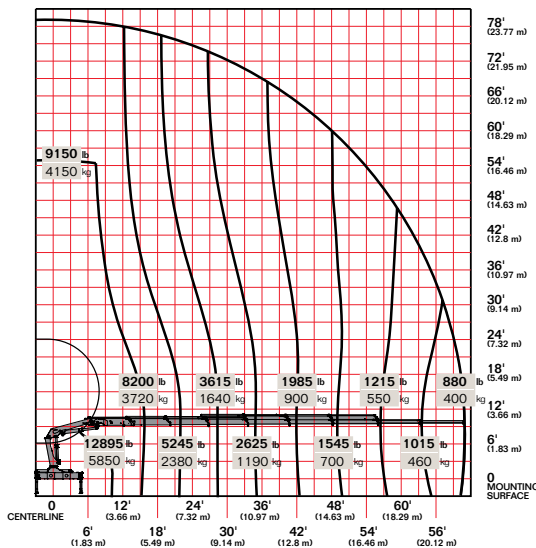
## 22/153SL K6



## 22/153SL K7



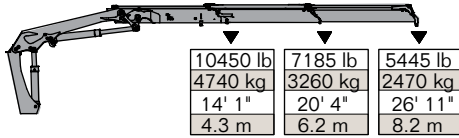
## 22/153SL K8



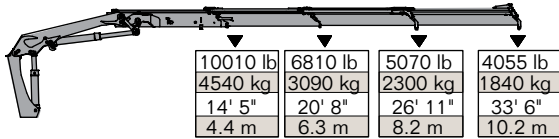
Limit working loads to those shown. Deduct the weight of load-handling devices.

## ► 22/153SL Lifting Capacity

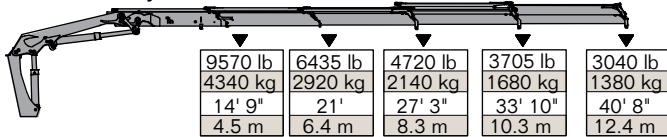
22/153SL - 2 Hydraulic



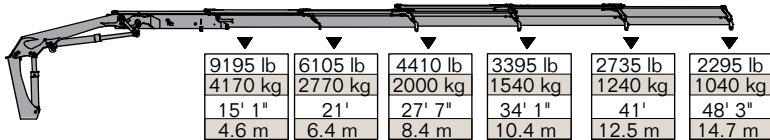
22/153SL - 3 Hydraulic



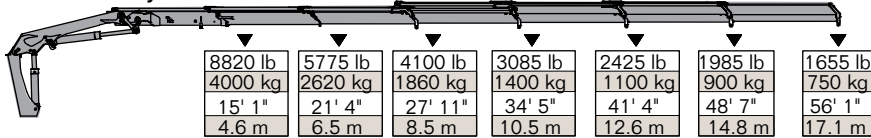
22/153SL - 4 Hydraulic



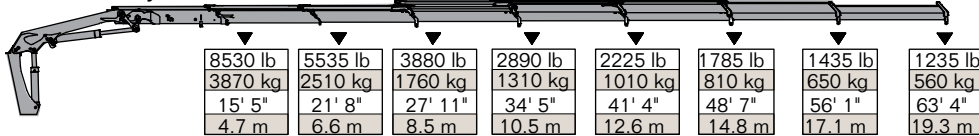
22/153SL - 5 Hydraulic



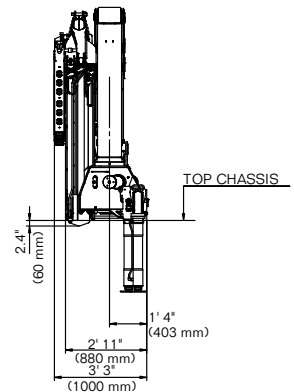
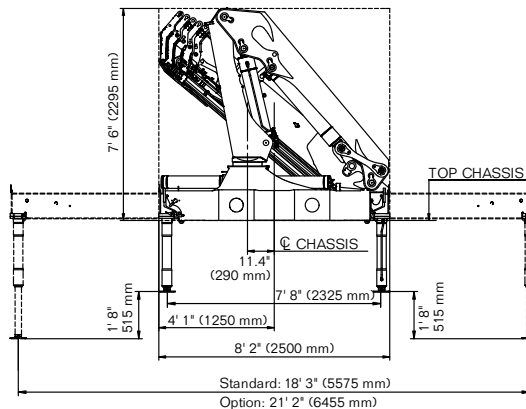
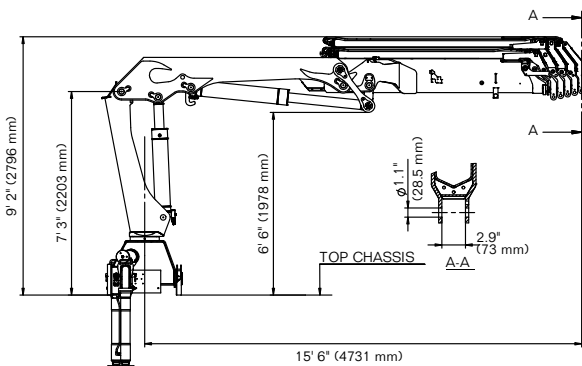
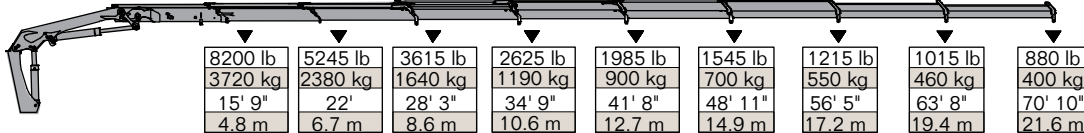
22/153SL - 6 Hydraulic



22/153SL - 7 Hydraulic



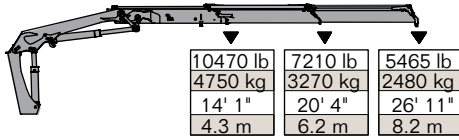
22/153SL - 8 Hydraulic



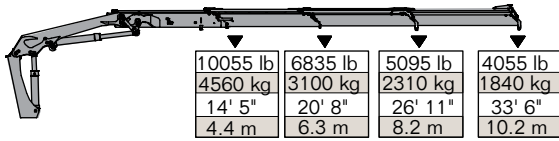


## ► 22/153DL Lifting Capacity

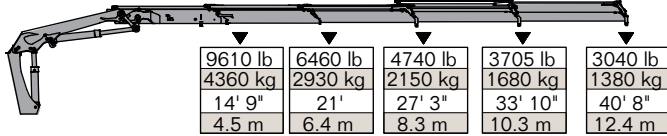
22/153DL - 2 Hydraulic



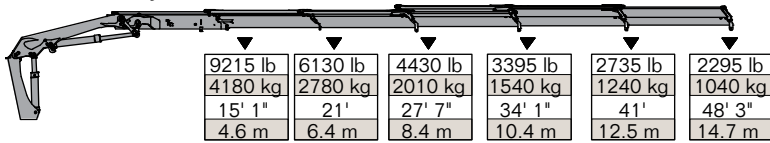
22/153DL - 3 Hydraulic



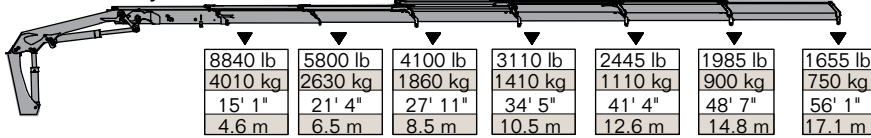
22/153DL - 4 Hydraulic



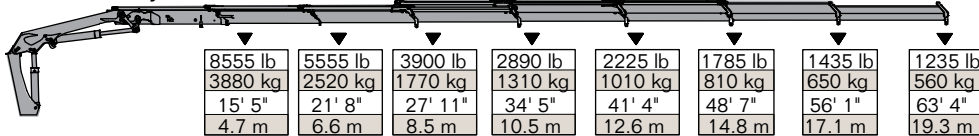
22/153DL - 5 Hydraulic



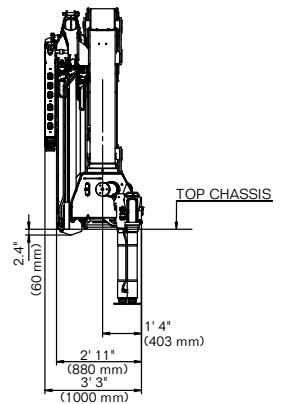
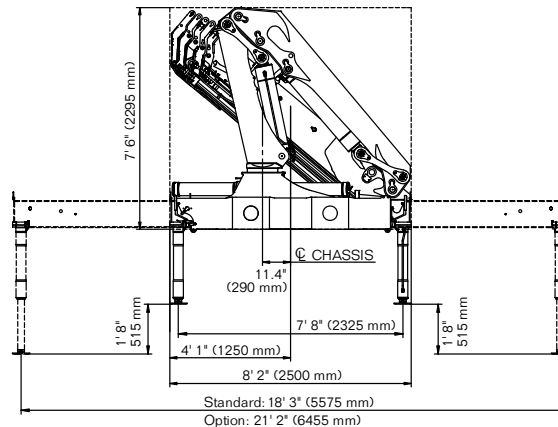
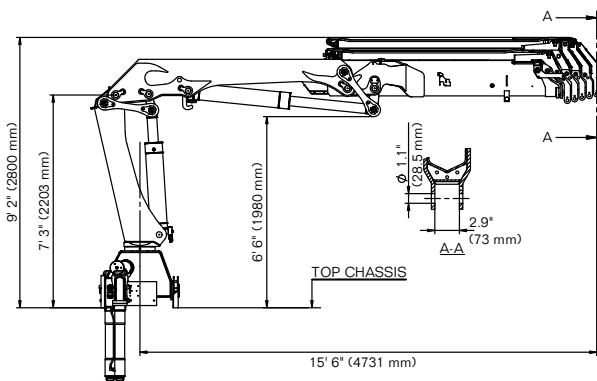
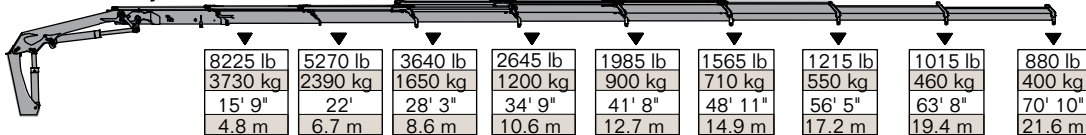
22/153DL - 6 Hydraulic



22/153DL - 7 Hydraulic



22/153DL - 8 Hydraulic



### Power Source

- Standard integral-mounted piston hydraulic pump and PTO application

### Cylinder Holding Valves

- Integral-mounted counterbalance valves or load-holding check valves
- Prevention of sudden cylinder collapse in case of hose failure

### Rotation System

- 400 degree rack and pinion
- 19,990 ft-lb (2.8 tm)
- Counterbalance valve on each cylinder to stop motion in case of hose failure

### Hydraulic System

- Open-centered system — closed optional
- Regeneration system on extension cylinder to ensure quick deployment
- Hydraulic oil reservoir, air breather, replaceable return-line filter, and control valve with levers

### Overload System

- Load-limiting capability for boom functions
- Rated capacity limitation (RCL) 5300 blocks load-increasing functions when full capacity is attained



### Nothing Says Commitment Like The Diamond.™

IMT has been meeting the needs of our customers for over 50 years and none of it would have been possible without a distributor network that's second to none. IMT distributors offer fast, knowledgeable service and the ability to help customers find the right product for every application. When you're looking for reliable equipment and dependable service, remember IMT.



An Oshkosh Corporation Company

### Iowa Mold Tooling Co., Inc.

500 Highway 18 West  
Garner, Iowa 50438  
800-247-5958 • [www.imt.com](http://www.imt.com)

IMT reserves the right to make changes in engineering, design, and specifications; add improvements; or discontinue manufacturing at any time without notice or obligation. IMT, the IMT logo and NOTHING SAYS COMMITMENT LIKE THE DIAMOND are registered trademarks or trademarks of Iowa Mold Tooling Co., Inc., Garner, IA, USA.

© 2013 Iowa Mold Tooling Co., Inc. All Rights Reserved.