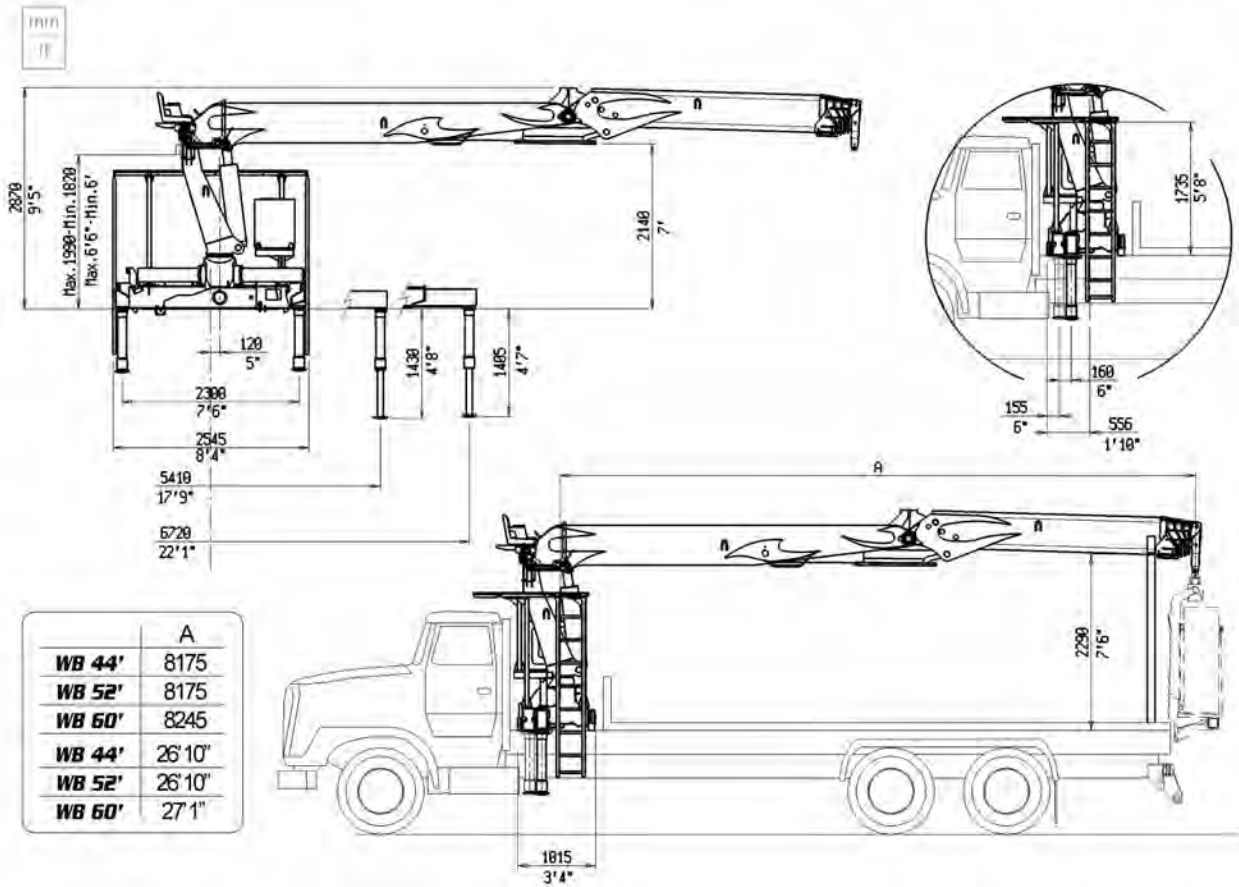
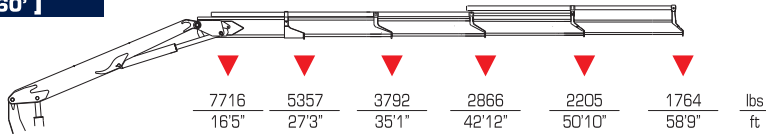


[WB 60']



	A
WB 44'	8175
WB 52'	8175
WB 60'	8245
WB 44'	26' 10"
WB 52'	26' 10"
WB 60'	27' 1"

TECHNICAL DATA		WB 44'	WB 52'	WB 60'
Maximum lifting moment	ft lbs	172900	162000	151900
		(24'11" - 6940lbs)	(24'11" - 6500lbs)	(24'11" - 6110lbs)
Maximum hydraulic reach	Horizontal	43'	51'2"	59'1"
	Vertical	54'11"	61'4"	69'3"
Hydraulic system	Recommended oil flow	gals/min (USA)	12+12	12+12
	Rated pressure	psi	3555	3555
	Tank capacity	gals (USA)	53	53
Slewing system	Slewing angle	-	408	408
	Slewing moment	ft lbs	32550	32550
	Max. working heel	% (°)	8,7(5)	8,7(5)
Standard crane weight with non full tank*	Weight of running board	lbs	9150	9660
	Weight of anchorage	lbs	440	440
	Weight of oil tank refueling	lbs	145	145
		lbs	350	350
Maximum power absorbed by the hydraulic pump	hp	49	49	49

Technical data can be revised without prior notice

COD. 8336820.0 - ED. 05/2004