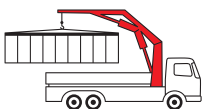


# PK 23502 / PK 26002 - EH

High Performance

**PALFINGER** CRANE



**KTL**  
protected

**Paltronic  
50**  
controlled

**RRC**<sup>\*)</sup>  
Radio Remote Control  
operated

**HPSC**<sup>\*)</sup>  
High Performance Stability Control  
monitored

**AOS**<sup>\*)</sup>  
Active Oscillation Suppression  
inside

**DPS**<sup>\*)</sup>  
Dual Power System  
activated

Two multi-talented all-rounders with true "PALFINGER DNA"

## Perfect in comfort and safety

It is obvious on first sight of the PK 23502 that the functional design elements not only have a visual impact but they also increase safety and comfort. Experienced operators appreciate its compact dimensions and large stabilizer width - as part of a cost-optimized design concept. In addition to its "Electronic High Power Lifting System" (E-HPLS), the most impressive feature of the PK 26002 EH is its enormous outreach. It is a sought-after helpmate across all sectors due to its combination of maneuverability and compact dimensions.



# Convincing arguments



## Power Link Plus

This knuckle boom, specially developed by PALFINGER which can be angled upwards stands out by virtue of excellent movement geometry. Even in the tightest spaces difficult crane jobs can be performed with precision.



## Maintenance-free extension system

With the maintenance-free extension system PALFINGER sets a clear path in easy servicing. The use of sliding elements made of special plastic in combination with the proven KTL cathodic dip painting means that the extension boom system no longer has to be serviced by the operator. This not only saves time and expense but also protects the environment.



## Control console

All important information about the crane can be seen on the main control stand. A digital indicator counts and displays the operating hours. Ergonomic control levers and the optional lighting package provide increased safety and comfort even in poor visibility conditions.



## Functional Design

Functional Design elements increase working comfort, protect against damage and make servicing and maintenance easier. The spiral tube hose optimally protects the hydraulic hoses from environmental influences, damage and dirt. Thanks to the patented interlock system, the crane is equipped with an innovative outrigger safety system for manual stabilizer supports.



## Lighting package (optional)

The control stand is supplied on request with LED illumination and backlit symbols. LED warning lights are fitted on the outriggers to provide better visibility.



## Radio remote control

Radio remote control with digital data transmission (standard on EH models) offers maximum efficiency and comfort. The display integrated in the handset informs the crane operator continuously about the current capacity loading level of the crane.



## PALTRONIC 50

Modern electronics in the increasingly complex crane system offers safety and comfort functions which make the crane operator's work easier and increases the efficiency of the crane job.

# Equipment for exacting demands

## Outrigger system

All the outriggers are fitted as standard with a ball-jointed support plate that can be swivelled through 10°. This enables them to adapt optimally to the ground. The enlarged plate also reduces the pressure on the ground. Four possible stabilizer widths: 5.0 m (mechanical) and 5.6 / 6.6 / 7.4 m (hydraulic). The crane's stabilizer cylinders can be pivoted fully hydraulically upwards through 180° (optional equipment).



## Load-holding valve

They prevent the crane boom from dropping and are fitted as standard on all slewing, lifting, knuckle-boom and extension cylinders. The valves are positioned in such a way that they are protected against damage.



## Hose equipment for auxiliary equipment

Hoses providing oil supply for auxiliary equipment are routed in compact trays and protective chains. A clean design offers maximum service life. There is also an optional solution with hose drum on the main boom with the hoses guided on the inside in the extension system for protection.



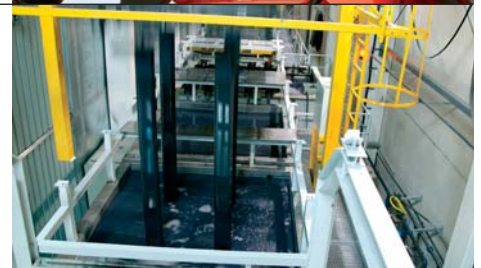
## Return oil utilisation

The high speed of the extension system is impressive. It results from return oil utilisation, which is installed as standard, and the generously dimensioned hydraulic lines. This increases efficiency in all types of applications!



## KTL – the cathodic dip painting

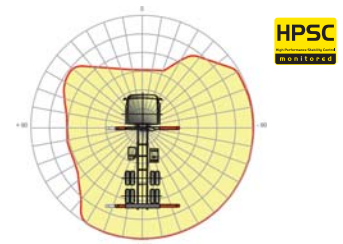
The shot-blasted crane parts are covered in zinc phosphate in an immersion process and coated electro-statically. The subsequent two-component top coating of paint provides a surface protection which in the past was usually only found in the automotive industry.



## HPSC\*

The High Performance Stability Control System (HPSC) monitors the stability of the crane vehicle. Sensors for proportional length measurement located in the stabilizers make their positioning fully variable. As a result, it is possible to calculate the permissible working range for any stabilizer situation. The integrated real-time data algorithm ensures optimum utilization of the lifting power at every point of the stability curve.

\* HPSC or an alternative system for monitoring stability is mandatory in the version compliant with EN12999:2009.



## AOS (optional)

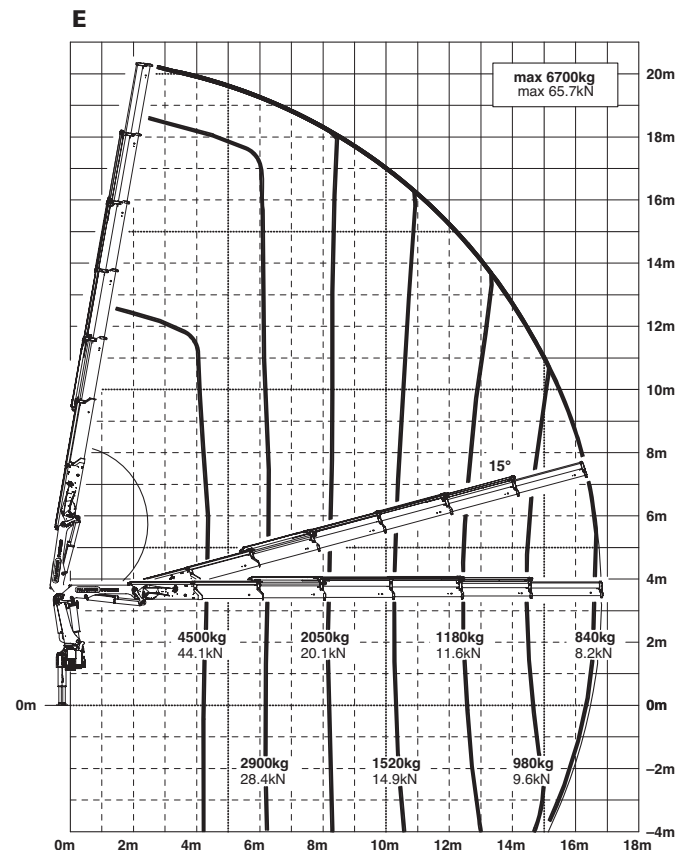
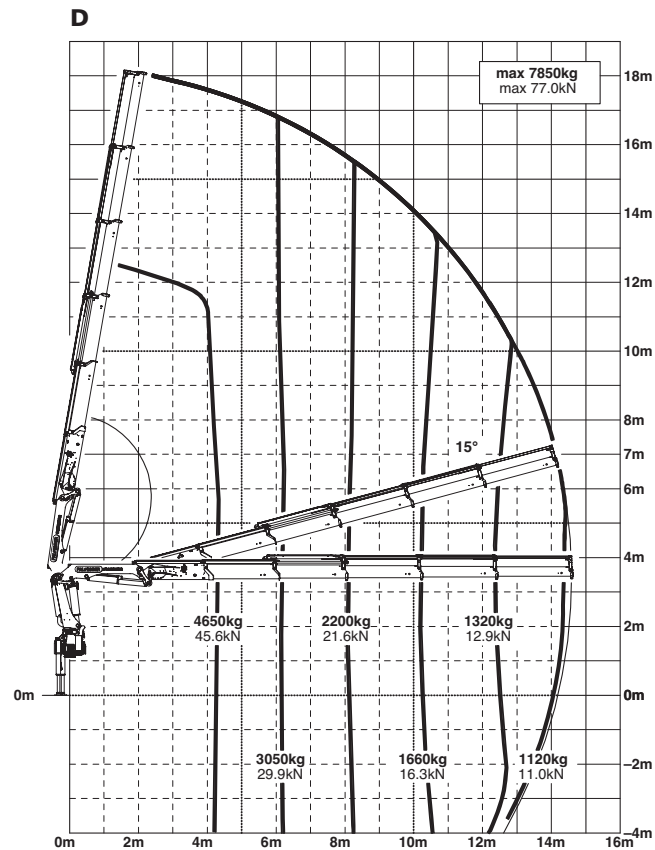
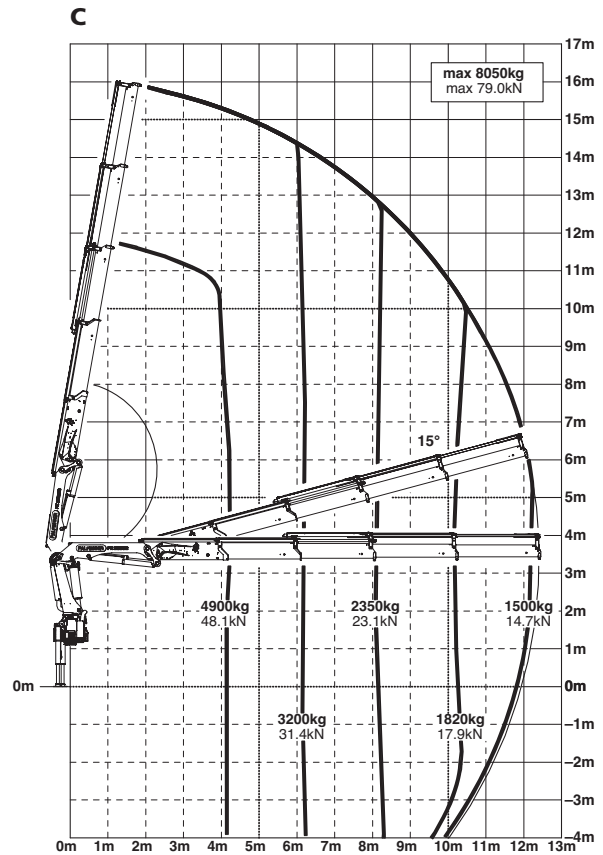
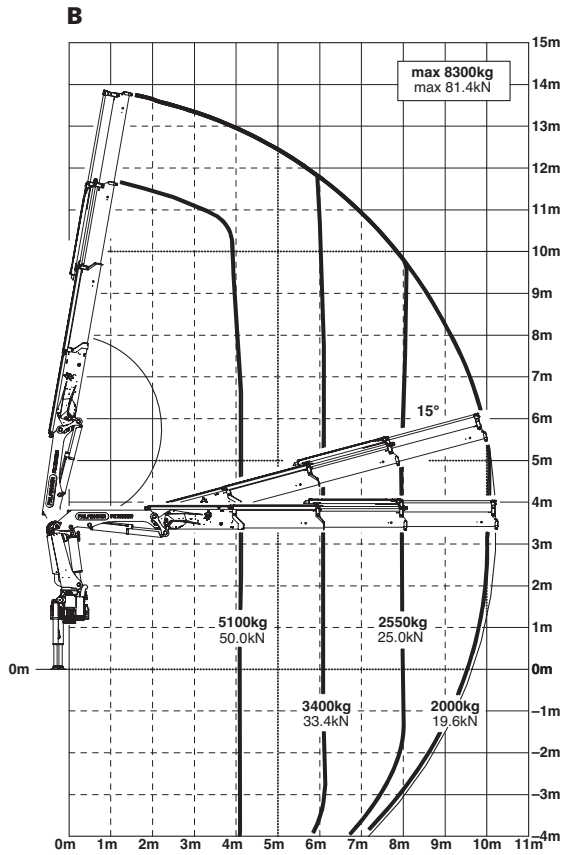
The Active Oscillation Suppression system available exclusively from PALFINGER compensates for jolts and sharp stress cycles caused by crane operation. Because oscillations are eradicated the crane can work with precision, much faster and therefore more cost-efficiently.



Customized for optimized mounting



# PK 23502 High Performance



The outreaches stated are with a boom angle of 20° and are therefore not the maximum.

# PK 23502 High Performance

## Max. lifting capacities

### A

Max. lifting capacities		8500 kg	18730 lbs
Outreach		Capacity	
4,1 m	13' 5"	5300 kg	11700 lbs
6,0 m	19' 8"	3600 kg	7900 lbs
7,9 m	25' 11"	2750 kg	6000 lbs

### B

Max. lifting capacities		8300 kg	18290 lbs
Outreach		Capacity	
4,2 m	13' 9"	5100 kg	11200 lbs
6,1 m	20' 0"	3400 kg	7500 lbs
8,0 m	26' 3"	2550 kg	5600 lbs
10,1 m	33' 2"	2000 kg	4400 lbs

### C

Max. lifting capacities		8050 kg	17740 lbs
Outreach		Capacity	
4,2 m	13' 9"	4900 kg	10800 lbs
6,1 m	20' 0"	3200 kg	7100 lbs
8,0 m	26' 3"	2350 kg	5200 lbs
10,1 m	33' 2"	1820 kg	4050 lbs
12,2 m	40' 0"	1500 kg	3300 lbs
14,4 m*	47' 3"	1200 kg	2650 lbs
16,6 m*	54' 6"	960 kg	2120 lbs

### D

Max. lifting capacities		7850 kg	17300 lbs
Outreach		Capacity	
4,3 m	14' 1"	4650 kg	10300 lbs
6,2 m	20' 4"	3050 kg	6700 lbs
8,1 m	26' 7"	2200 kg	4850 lbs
10,2 m	33' 6"	1660 kg	3650 lbs
12,3 m	40' 4"	1320 kg	2950 lbs
14,4 m	47' 3"	1120 kg	2450 lbs
16,7 m*	54' 9"	890 kg	1960 lbs
18,8 m*	61' 8"	730 kg	1600 lbs

### E

Max. lifting capacities		6700 kg	14770 lbs
Outreach		Capacity	
4,4 m	14' 5"	4500 kg	9900 lbs
6,3 m	20' 8"	2900 kg	6400 lbs
8,2 m	26' 11"	2050 kg	4500 lbs
10,3 m	33' 10"	1520 kg	3350 lbs
12,4 m	40' 8"	1180 kg	2600 lbs
14,5 m	47' 7"	980 kg	2150 lbs
16,7 m	54' 9"	840 kg	1860 lbs
18,8 m*	61' 8"	680 kg	1500 lbs
21,0 m*	68' 11"	570 kg	1260 lbs

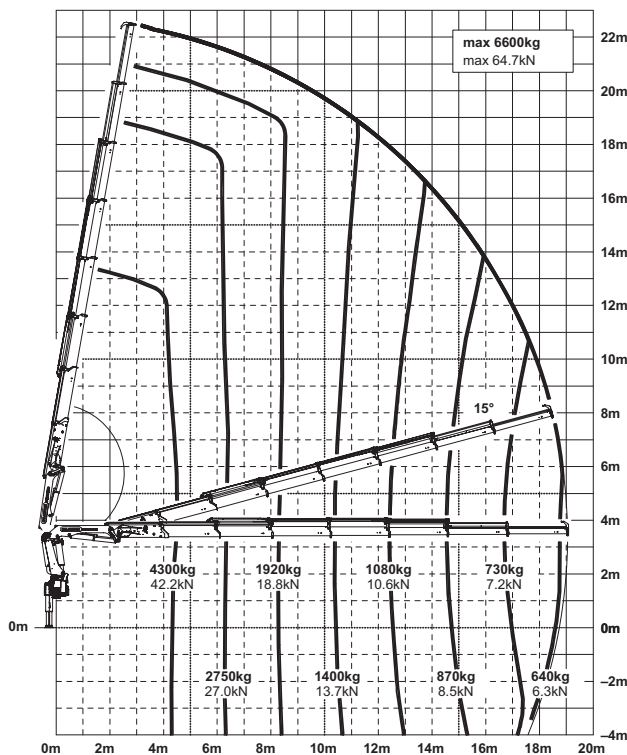
### F

Max. lifting capacities		6600 kg	14550 lbs
Outreach		Capacity	
4,5 m	14' 9"	4300 kg	9500 lbs
6,4 m	20' 12"	2750 kg	6100 lbs
8,3 m	27' 3"	1920 kg	4250 lbs
10,4 m	34' 1"	1400 kg	3100 lbs
12,5 m	41' 0"	1080 kg	2400 lbs
14,6 m	47' 11"	870 kg	1920 lbs
16,7 m	54' 9"	730 kg	1620 lbs
18,9 m	62' 0"	640 kg	1400 lbs
21,1 m*	69' 3"	530 kg	1170 lbs
23,1 m*	75' 9"	450 kg	990 lbs

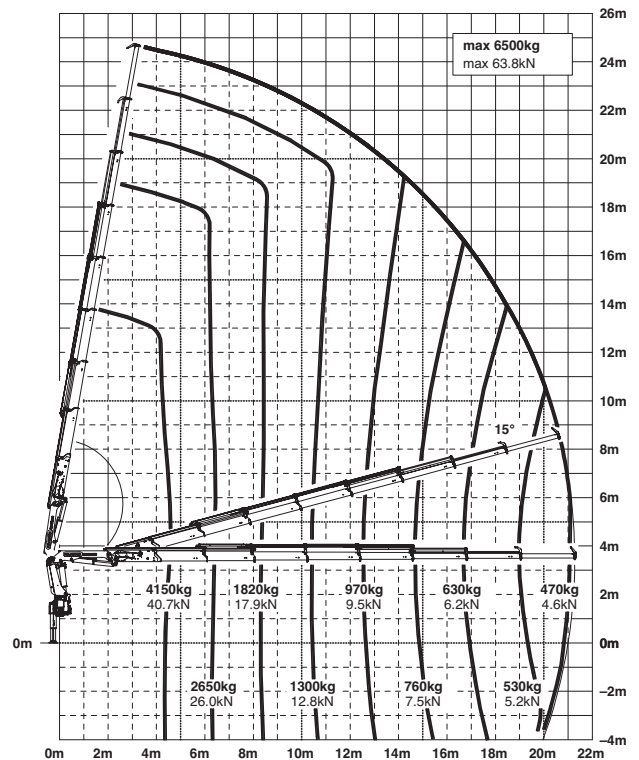
### G

Max. lifting capacities		6500 kg	14300 lbs
Outreach		Capacity	
4,6 m	15' 1"	4150 kg	9200 lbs
6,5 m	21' 4"	2650 kg	5800 lbs
8,4 m	27' 7"	1820 kg	4000 lbs
10,5 m	34' 5"	1300 kg	2850 lbs
12,6 m	41' 4"	970 kg	2150 lbs
14,7 m	48' 3"	760 kg	1680 lbs
16,8 m	55' 1"	630 kg	1380 lbs
19,0 m	62' 4"	530 kg	1180 lbs
21,1 m	69' 3"	470 kg	1040 lbs
23,1 m*	75' 9"	400 kg	880 lbs

### F

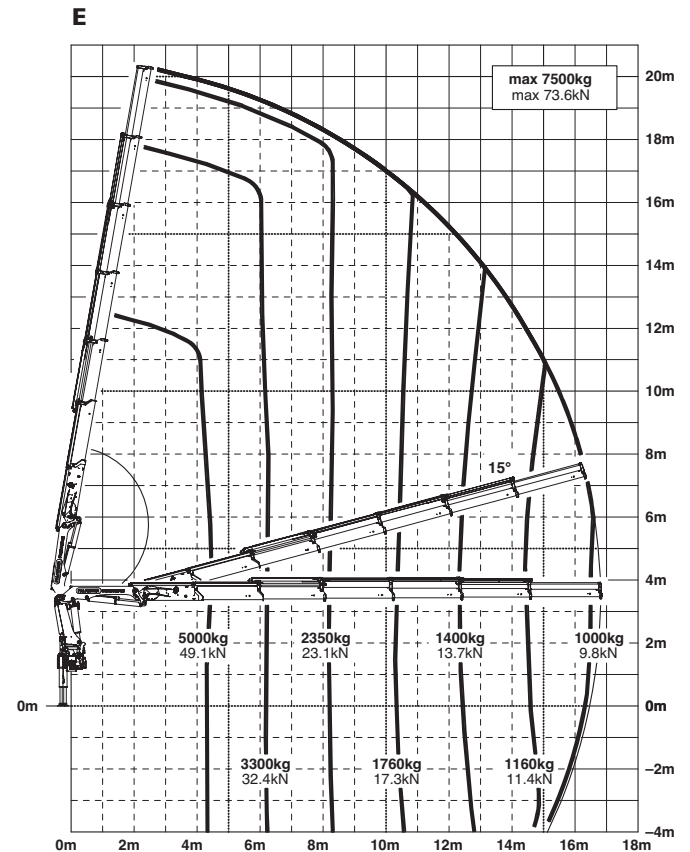
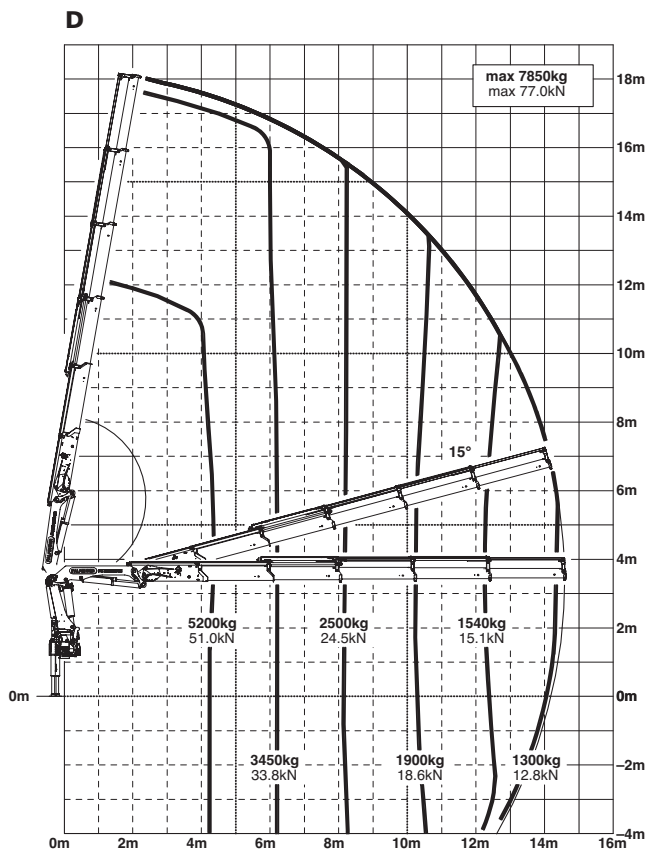
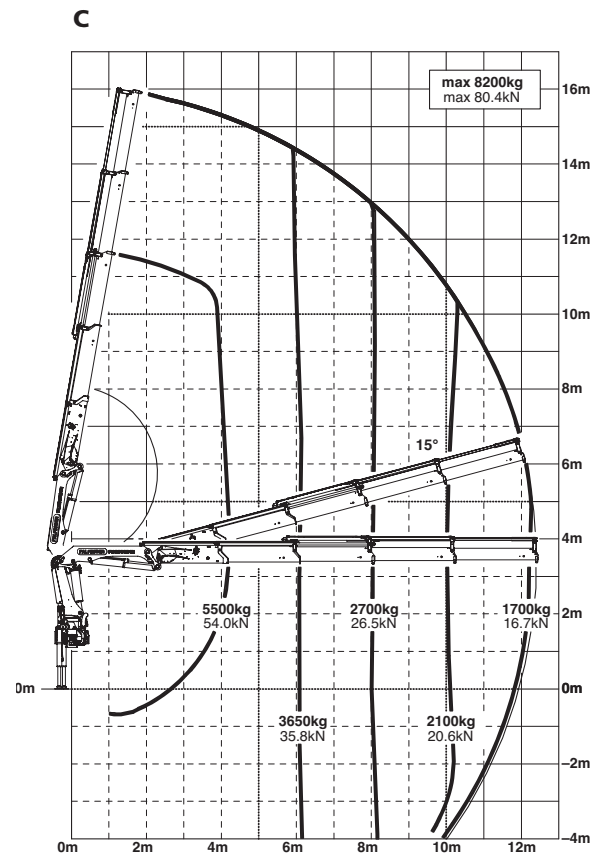
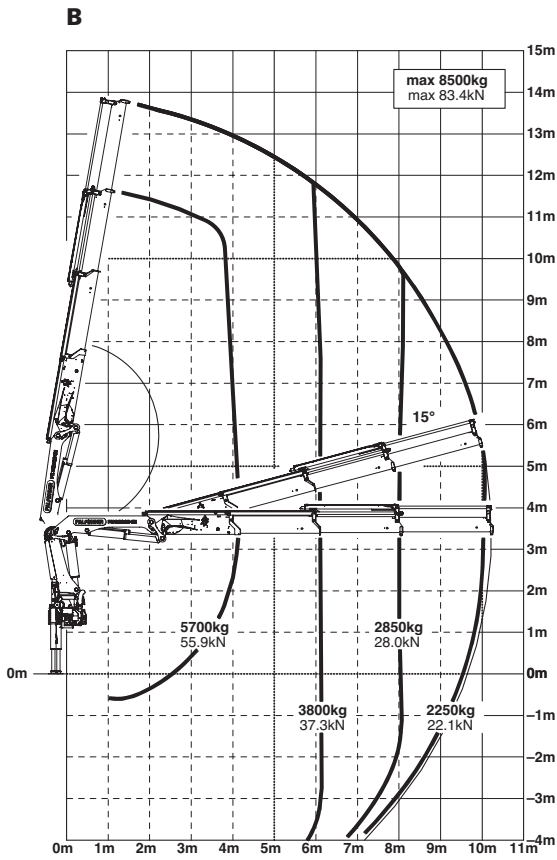


### G



\*mechanical extension

# PK 26002 EH High Performance



The outreaches stated are with a boom angle of 20° and are therefore not the maximum.



# PK 26002 EH High Performance

## Max. lifting capacities

### A

Max. lifting capacities		8900 kg	19600 lbs
Outreach	Capacity		
4,1 m	13' 5"	5900 kg	13100 lbs
6,0 m	19' 8"	4000 kg	8900 lbs
7,9 m	25' 11"	3050 kg	6700 lbs

### B

Max. lifting capacities		8500 kg	18730 lbs
Outreach	Capacity		
4,2 m	13' 9"	5700 kg	12500 lbs
6,1 m	20' 0"	3800 kg	8400 lbs
8,0 m	26' 3"	2850 kg	6300 lbs
10,1 m	33' 2"	2250 kg	5000 lbs

### C

Max. lifting capacities		8200 kg	18070 lbs
Outreach	Capacity		
4,2 m	13' 9"	5500 kg	12000 lbs
6,1 m	20' 0"	3650 kg	8000 lbs
8,0 m	26' 3"	2700 kg	5900 lbs
10,1 m	33' 2"	2100 kg	4550 lbs
12,2 m	40' 0"	1700 kg	3750 lbs
14,4 m	47' 3"	1380 kg	3020 lbs
16,6 m	54' 6"	1120 kg	2450 lbs

### D

Max. lifting capacities		7850 kg	17300 lbs
Outreach	Capacity		
4,3 m	14' 1"	5200 kg	11500 lbs
6,2 m	20' 4"	3450 kg	7600 lbs
8,1 m	26' 7"	2500 kg	5500 lbs
10,2 m	33' 6"	1900 kg	4200 lbs
12,3 m	40' 4"	1540 kg	3400 lbs
14,4 m	47' 3"	1300 kg	2850 lbs
16,7 m	54' 9"	1040 kg	2300 lbs
18,8 m	61' 8"	870 kg	1920 lbs

### E

Max. lifting capacities		7500 kg	16530 lbs
Outreach	Capacity		
4,4 m	14' 5"	5000 kg	11100 lbs
6,3 m	20' 8"	3300 kg	7200 lbs
8,2 m	26' 11"	2350 kg	5200 lbs
10,3 m	33' 10"	1760 kg	2900 lbs
12,4 m	40' 8"	1400 kg	3050 lbs
14,5 m	47' 7"	1160 kg	2550 lbs
16,7 m	54' 9"	1000 kg	2200 lbs
18,8 m	61' 8"	820 kg	1810 lbs
21,0 m	68' 11"	690 kg	1520 lbs

### F

Max. lifting capacities		7300 kg	16090 lbs
Outreach	Capacity		
4,5 m	14' 9"	4850 kg	10700 lbs
6,4 m	20' 12"	3150 kg	6900 lbs
8,3 m	27' 3"	2250 kg	4900 lbs
10,4 m	34' 1"	1640 kg	3650 lbs
12,5 m	41' 0"	1280 kg	2800 lbs
14,6 m	47' 11"	1040 kg	2300 lbs
16,7 m	54' 9"	880 kg	1950 lbs
18,9 m	62' 0"	770 kg	1700 lbs
21,1 m	69' 3"	650 kg	1440 lbs
23,1 m	75' 9"	560 kg	1240 lbs

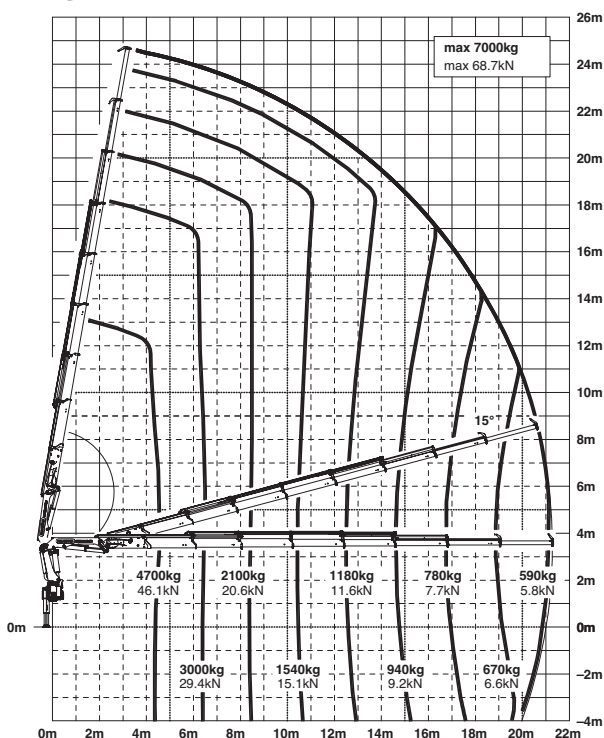
### G

Max. lifting capacities		7000 kg	15430 lbs
Outreach	Capacity		
4,6 m	15' 1"	4700 kg	10400 lbs
6,5 m	21' 4"	3000 kg	6600 lbs
8,4 m	27' 7"	2100 kg	4650 lbs
10,5 m	34' 5"	1540 kg	3400 lbs
12,6 m	41' 4"	1180 kg	2600 lbs
14,7 m	48' 3"	940 kg	2050 lbs
16,8 m	55' 1"	780 kg	1720 lbs
19,0 m	62' 4"	670 kg	1480 lbs
21,1 m	69' 3"	590 kg	1300 lbs
23,1 m	75' 9"	510 kg	1130 lbs

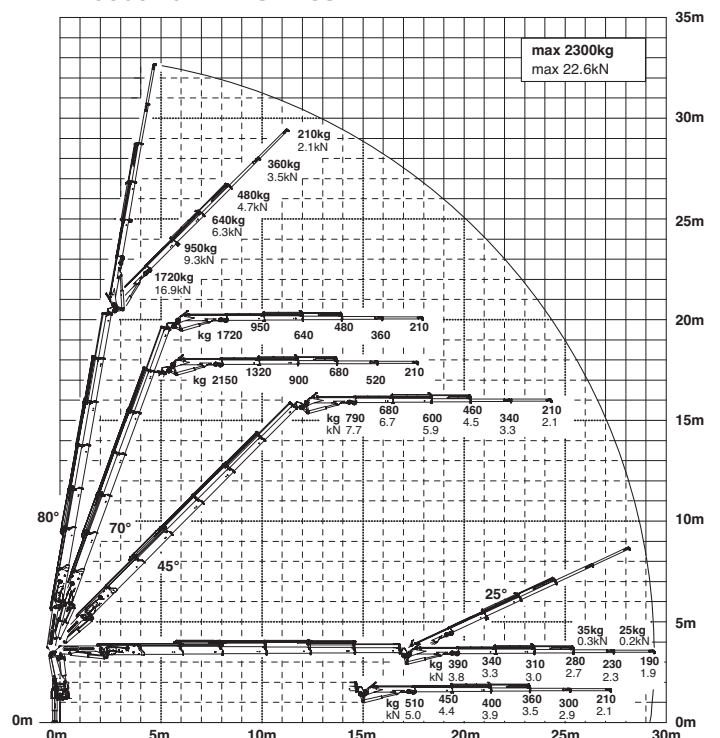
## Package model PK 26002 EH:

- E-HPLS
- Paltronic 50
- Radio remote control with LED display
- Danfoss control valve or PVG2000
- 8.5 kW oil cooler
- 200 l oil tank

### G



### E PJ060B JV2 DPS PLUS



\*mechanical extension

These are performance data you can count on

**PK 23502 High Performance**

**Technical Specifications (EN 12999 HC1 HD4/B3)**

Max. lifting moment	22.4 mt/219.7 kNm	162030 ft.lbs
Max. lifting capacity	8500 kg/83.4 kN	18740 lbs
Max. hydraulic outreach	21.3 m	69' 11"
Max. manual outreach	23,3 m	76' 5"
Slewing angle	400°	
Slewing torque	2.8 mt/27.5 kNm	20260 ft.lbs
Stabilizer spread	std. 5.0 m/16' 5"	max. 7.4 m/24' 3"
Fitting space required (std.)	0.96 m	3' 2"
Width folded	2.53 m	8' 3"
Max. operating pressure	320 bar	4640 psi
Recommended pump capacity	from 50 l/min	13.2 US gal./min
	to 70 l/min	19.8 US gal./min
Dead weight (std.)	2583 kg	5690 lbs

**PK 26002 EH High Performance**

**Technical Specifications (EN 12999 HC1 HD4/B3)**

Max. lifting moment	24.9 mt/244.0 kNm	179950 ft.lbs
Max. lifting capacity	8900 kg/87.3 kN	19620 lbs
Max. hydraulic outreach	21.3 m	69' 11"
Max. manual outreach	23.3 m	76' 5"
Outreach (+ fly jib)	29.4 m	96' 5"
Slewing angle	400°	
Slewing torque	2.8 mt/27.5 kNm	20260 ft.lbs
Stabilizer spread	std. 5.0 m/16' 5"	max. 7.4 m/24' 3"
Fitting space required (std.)	0.96 m	3' 2"
Width folded	2.53 m	8' 3"
Max. operating pressure	350 bar	5075 psi
Recommended pump capacity	from 75 l/min	19.8 US gal./min
	to 100 l/min	26.4 US gal./min
Dead weight (std.)	2583 kg	5690 lbs

