

SPECIFICATION SHEET

TYPE: The Crane shall be a Pedestal type.

CAPACITY: The Crane shall have a designated lifting capacity of 1500 lbs.

BOOM HEIGHT: The Boom shall be a 15 position manually adjustable boom, with up to 84" of lifting height. (Based on standard 24" pedestal height)

BOOM LENGTH: The Boom shall have a adjustable length of 52" to 72" in three stages.

ROTATION: The Crane shall have a 360-degree manual rotation on machined surfaces, with two needle bearings and one thrust bearing that are environmentally sealed.

HOIST: The Hoist Motor shall be 12 volt D.C. powered, with a dual internal breaking system. Hoist shall have power up and power down.

CABLE: The Cable shall be 25' X 3/16" in diameter galvanized aircraft quality cable, with a single line breaking strength of 4200 lbs., and a safety hook.

CONTROL: A Hand Held Pendant Control, 10 feet in length, shall be furnish for controlling the hoisting function and it shall be 12-volt D.C. powered. Pendant Control shall be weather resistant, with a solid rubber grip.

POWER SOURCE: The Power Source shall be the vehicles own 12-volt D.C. battery.

MOUNTING: The Crane shall have a 12" x 12" mounting base with a 9" square bolt pattern, 1/2" Grd. 8 Bolts.

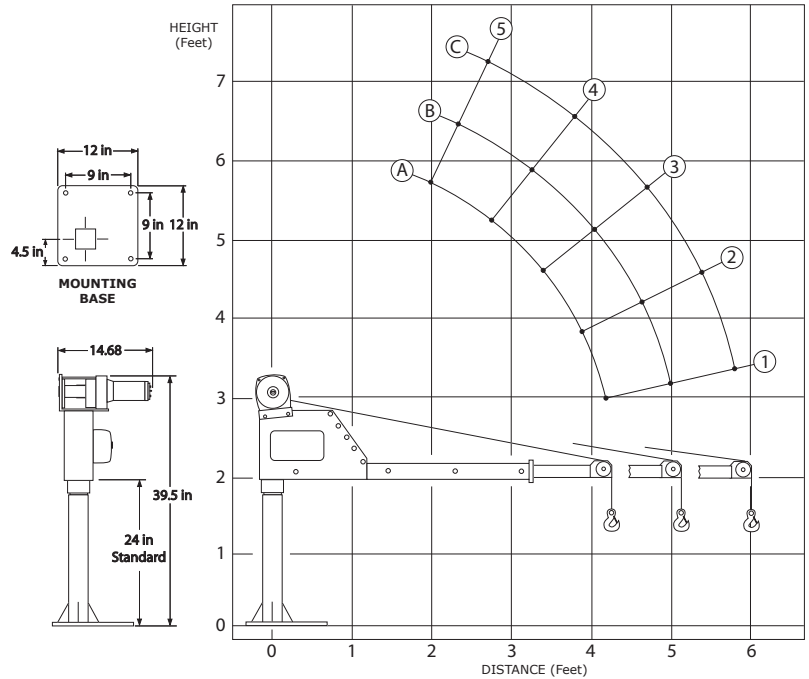
WIRING: The Crane shall be pre-wired from the factory and tested. The crane shall be provided with 25' of 6-gauge power cable and 10' of 6 gauge ground cable. The entire electrical system shall be circuit breaker protected.

SAFETY: The Crane shall be designed and manufactured according to the applicable ANSI standards for mobile cranes. The Crane shall be clearly marked with Maximum Load & Warning Decals.

DOCUMENTATION: The Crane shall be furnished with detailed Installation Instructions, Operation and Safety Instructions, Parts List, and Maintenance Instructions.

FINISH COATING: The Crane shall be finished with a durable Powder Coating, light gray in color.

WARRANTY: Manufacturer shall warrant the materials and workmanship for a period of one year from the date of delivery (excluding cable).



OPTIONS AND ACCESSORIES ARE AVAILABLE FOR THIS MODEL



Boom Position	A	B	C
5	1500	1350	1065
4	1500	1215	950
3	1250	1045	805
2	1100	865	660
1	950	695	525