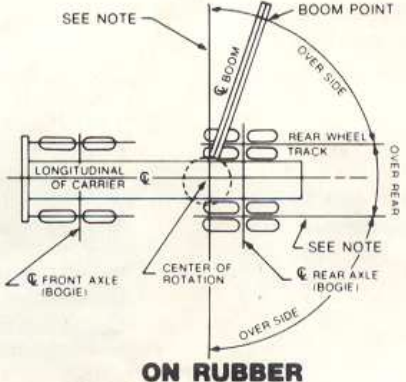
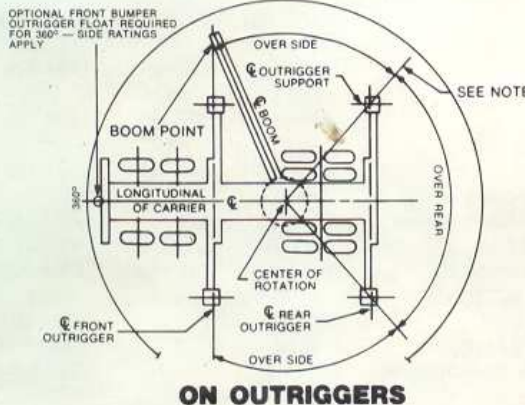


lifting capacities

| Rad. in Ft. | | LOAD RATINGS IN POUNDS | | | | | | | | | | | | | | WITHOUT OUTRIGGERS | |
|-------------|------|---|------|---------|------|---------|------|---------|------|---------|------|----------|------|-----------|-----------|--------------------|--|
| | | Over Side and Over Rear With Outriggers | | | | | | | | | | | | | | | |
| | | Powered Boom Length — All Powered Sections Extended Equally | | | | | | | | | | | | | | | |
| 33 Feet | | 45 Feet | | 57 Feet | | 69 Feet | | 81 Feet | | 93 Feet | | 105 Feet | | Over Side | Over Rear | | |
| ∠ | Lbs. | ∠ | Lbs. | ∠ | Lbs. | ∠ | Lbs. | ∠ | Lbs. | ∠ | Lbs. | ∠ | Lbs. | | | | |
| 12 | 60 | 150,000 | 69 | 90,000 | 75 | 83,000 | | | | | | | | 40,000 | 50,000 | | |
| 15 | 54 | 120,000 | 65 | 86,000 | 71 | 80,000 | 75 | 74,000 | 75 | *55,000 | | | | 40,000 | 50,000 | | |
| 20 | 42 | 90,000 | 58 | 74,000 | 66 | 67,000 | 71 | 60,000 | 74 | 52,000 | 75 | *40,000 | | 24,500 | 32,000 | | |
| 25 | 25 | 66,000 | 50 | 62,000 | 60 | 56,000 | 66 | 50,000 | 71 | 44,000 | 74 | 38,000 | 75 | *31,000 | 16,000 | 22,000 | |
| 30 | | | 40 | 48,000 | 54 | 48,000 | 62 | 43,000 | 67 | 38,000 | 70 | 32,500 | 73 | 27,500 | 11,000 | 15,800 | |
| 35 | | | 28 | 37,000 | 47 | 37,000 | 57 | 37,000 | 63 | 33,000 | 67 | 28,500 | 70 | 24,000 | 8,000 | 12,000 | |
| 40 | | | | | 39 | 29,500 | 51 | 29,500 | 59 | 29,500 | 63 | 25,000 | 67 | 21,500 | 5,600 | 9,000 | |
| 45 | | | | | 30 | 24,500 | 45 | 24,500 | 54 | 24,500 | 60 | 22,500 | 64 | 19,400 | 3,500 | 6,400 | |
| 50 | | | | | | | 39 | 20,500 | 49 | 20,500 | 56 | 20,500 | 61 | 17,700 | 2,000 | 4,600 | |
| 60 | | | | | | | | | 38 | 15,000 | 48 | 15,000 | 54 | 15,000 | 1,000 | 3,200 | |
| 70 | | | | | | | | | | | 38 | 11,100 | 47 | 11,100 | | | |
| 80 | | | | | | | | | | | 25 | 8,000 | 38 | 8,000 | | | |
| 90 | | | | | | | | | | | | | 27 | 5,600 | | | |
| 100 | | | | | | | | | | | | | 1 | 4,200 | | | |

*Load ratings, for maximum 75° boom elevation, will be at longer radius than indicated.



ON OUTRIGGERS

ON RUBBER

AREAS OF OPERATION

NOTE
THESE LINES DETERMINE THE LIMITING POSITION OF ANY LOAD FOR OPERATION WITHIN WORKING AREAS INDICATED.

Operating radius is the horizontal distance from the axis of rotation before loading, to the center of the vertical hoistline or tackle with loads applied. Boom angles shown are with rated loads applied and provide an approximation of the operating radius. For rated loads, do not exceed the specified operating radius. Crane load ratings are for machines with 12,000 pounds of counterweight and do not exceed 85% of the tipping loads. Ratings above the heavy line are based on the machine's hydraulic or structural competence and not on the machine stability. Weights of hooks, hook blocks, slings, and all other load handling devices, except the hoist rope, shall be considered a part of the load. Crane load ratings with outriggers are based on outriggers fully extended and set to a distance of 11 feet 0 inches from the longitudinal axis of the carrier to the outrigger float pivot connection and wheels within the boundary of the outriggers unloaded. Crane load ratings without outriggers depend on tire capacity and condition of tires inflated to 100 P.S.I.

Crane load ratings are based on freely suspended loads with the machine leveled and standing on a firm, uniform supporting surface. Practical working loads depend on supporting surface, wind, and other factors affecting stability, hazardous surroundings, experience of personnel and proper handling, all of which must be taken into account by the operator. Positioning or operation at radii and boom or jib lengths beyond the maximums and minimums shown, is not intended or approved. For boom lengths not shown, use load ratings of next longer boom. The maximum load which may be telescoped is limited by hydraulic pressure, boom angle and boom lubrication. All sections of the boom must be telescoped equally. For 33 foot boom length ratings, telescope cylinders must be fully retracted and against stops. Method of extension is independent or synchronous with each powered section extendible a distance of 24 feet.

| MAXIMUM LATTICE JIB LOAD RATINGS IN POUNDS | | | | | | |
|--|--------------------|--------|--------|--------|-------|-------|
| Min. Boom Angle | Jib Length In Feet | | | | | |
| | 30 | 40 | 50 | 60 | 70 | |
| 0° OFF-SET | 75° | 14,000 | 12,500 | 11,000 | 9,500 | 8,000 |
| | 70° | 11,500 | 10,000 | 9,000 | 8,000 | 7,000 |
| | 65° | 9,500 | 8,000 | 7,000 | 6,000 | 5,400 |
| | 60° | 8,000 | 6,000 | 5,000 | 4,500 | 3,800 |
| | 55° | 6,500 | 4,500 | 3,600 | 3,100 | 2,600 |
| 7.5° OFF-SET | 75° | 12,500 | 11,000 | 9,500 | 8,000 | 6,500 |
| | 70° | 11,000 | 9,000 | 8,000 | 7,000 | 5,800 |
| | 65° | 9,000 | 7,000 | 6,000 | 5,300 | 4,700 |
| | 60° | 7,500 | 5,500 | 4,500 | 4,000 | 3,300 |
| | 55° | 6,000 | 4,000 | 3,200 | 2,700 | 2,300 |
| 15° OFF-SET | 75° | 11,000 | 9,500 | 8,000 | 6,500 | 5,000 |
| | 70° | 9,500 | 8,000 | 7,000 | 6,000 | 4,500 |
| | 65° | 8,000 | 6,500 | 5,500 | 4,600 | 3,800 |
| | 60° | 7,000 | 5,000 | 4,200 | 3,500 | 2,800 |
| | 55° | 5,700 | 3,600 | 2,800 | 2,300 | 2,000 |

NOTE: Below 55° Boom Angles Lifting With Jib Not Recommended.

With lattice jib in operating position powered boom ratings shall be reduced according to the jib length as shown in pounds.

Deductions apply when lifting from boom point with lattice jib erected. Use ratings in "105 feet" column and apply appropriate deduction. For boom lengths less than 105 feet, use boom angle to determine load rating in "105 feet" column. For boom angles not shown, use rating of next lower boom angle.

| Jib Length | 30 Ft. | 40 Ft. | 50 Ft. | 60 Ft. | 70 Ft. |
|-------------|--------|--------|--------|--------|--------|
| Boom Deduct | 2,000 | 2,600 | 3,200 | 3,800 | 4,400 |

Maximum jib load ratings are based on structural competence. Jib load ratings at any radius shall not exceed the powered boom load ratings at the same radius, and shall not exceed maximum jib load ratings shown. For bucket ratings on jib, deduct 20% from maximum jib load ratings. Maximum jib operating radius shall not exceed the operating radius of the powered boom for any given length setting. Use of the outriggers is recommended when boom is equipped with jib.

| MAX. TELESCOPING JIB LOAD RATINGS IN POUNDS | | | | |
|---|-------------|------------|-------------|-----------|
| Min. Boom Angle | 27 Foot Jib | | 45 Foot Jib | |
| | No Offset | 30° Offset | No Offset | 8° Offset |
| 75° | 10,000 | 5,200 | 5,000 | 3,800 |
| 73° | 9,000 | 5,100 | 4,600 | 3,600 |
| 69° | 8,000 | 4,950 | 4,000 | 3,250 |
| 66° | 7,300 | 4,850 | 3,700 | 3,050 |
| 63° | 6,800 | 4,750 | 3,450 | 2,900 |
| 60° | 6,500 | 4,700 | 3,200 | 2,700 |
| 55° | 6,000 | 4,550 | 2,900 | 2,500 |
| 50° | 5,500 | 4,400 | 2,700 | 2,300 |
| 40° | 5,000 | 4,150 | 2,500 | 2,100 |
| 30° | 4,700 | 4,000 | 2,400 | 2,000 |

With telescoping jib in operating position, main hook ratings shall be reduced by 2,500 pounds.

| HOIST REEVING | | | | | | | | | | | | |
|--|--------|--------|--------|--------|--------|--------|--------|---------|---------|---------|---------|---------|
| P&H # 16 — Rope Diameter — 3/4 In. Breaking Strength — 51,800 lbs. | | | | | | | | | | | | |
| PERMISSIBLE LINE LOAD IN POUNDS | | | | | | | | | | | | |
| Parts Line | 1 | 2 | 3 | 4 | 5 | 6 | 7 | 8 | 9 | 10 | 11 | 12 |
| P&H # 16 | 12,500 | 25,000 | 37,500 | 50,000 | 62,500 | 75,000 | 87,500 | 100,000 | 112,500 | 125,000 | 137,500 | 150,000 |

NOTE: OPERATION OF THIS EQUIPMENT IN EXCESS OF LOAD RATINGS AND DISREGARD OF INSTRUCTIONS VOIDS THE WARRANTY.

working ranges

