



# FS170T FALCON

## The FALCON Series

When you need considerable work height combined with limited or narrow access and maybe even surface pressure restrictions, nothing outperforms the new FALCON series. In a field dominated by traditional boom lifts, the FALCON series sets a new standard for compact, flexible and light aerial work platform design. The new design is not only elegant, but also makes it the most user-friendly and safe unit in its class.

- Available in 8 models from 85ft - 170ft
- Models available in wheel and/or track version
- Pass through a single or double door opening
- First and only compact lift with a double jib system
- Automatic outrigger setting (optional)
- Drive from basket (optional in wheel based lifts)
- Automatic, double safety and stability system
- Multi position outrigger system
- Set up on uneven surfaces
- Lightweight, detachable basket
- Self loads onto low bed trailer
- Customized trailer available upon request

We reserve the right to alterations

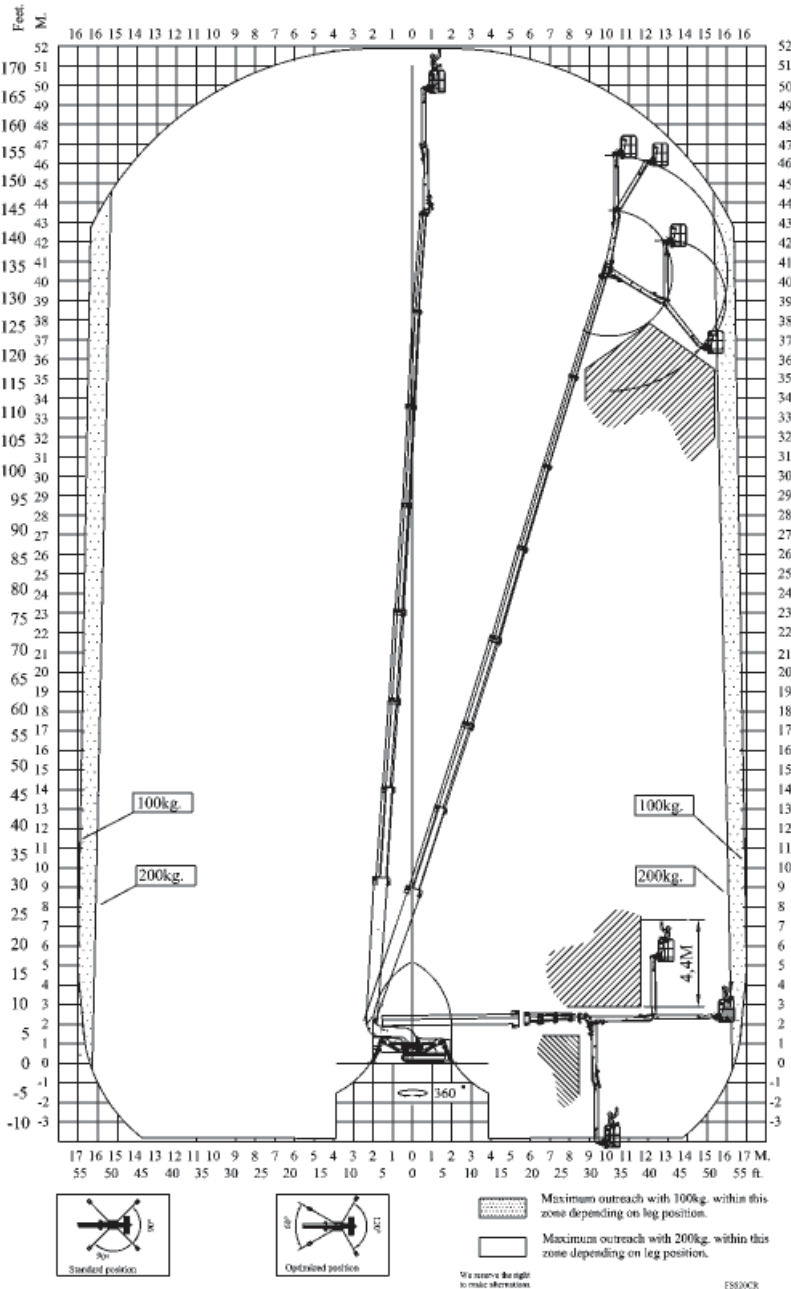
## Features

## FS170T

Working height	170 ft 7 in
Basket height	166 ft
Max outreach	52 ft 6 in
Jib arm (2x10ft)	19 ft 8 in
Double jib arm	200°
Basket load	440 lbs
Basket dims	2'7" x 4'7"
Basket rotation (opt)	+/-90°
Turret rotation	375°
Height	6 ft 11 in
Length	30 ft 6 in
Width (min)	4 ft
Width (max)	5 ft 3 in
Gradability (standard)	20°/37%
Weight (approx)	29,736 lbs
4 battery pack	Standard
24V DC motor	Standard
Lombardini diesel engine	Standard

# FALCON

## FS 170T



### Standard equipment:

- Automatic stability & outreach control
- Computer controlled (can-bus)
- Proportional control of all functions
- Self-propelled
- Battery powered with charger
- Double link-arm system
- 375° turret rotation, with integrated stop
- +/- 90° basket rotation
- Individual setting of each outrigger
- Electronic checking of the power system (PLC)
- Manual pump system for emergency lowering
- Ability to self-load onto trucks or trailers
- Double crawler system
- Front crawler section adjustable
- Variable width
- Minimum width only 4 ft
- Space for tools etc. in basket
- Storage room in chassis with lock
- Diesel engine, Lombardini (4-cyl)
- Chassis control from basket

### Options:

- 110V AC power supply in the basket
- Air/water supply in the basket
- Sensor system on basket
- Non marking crawlers
- Slope alarm
- 4 pcs extra batteries
- Autosetting/levelling
- Portable control panel
- Special outrigger footplates
- Basket in various sizes
- Special color
- Anemometer wind warning system