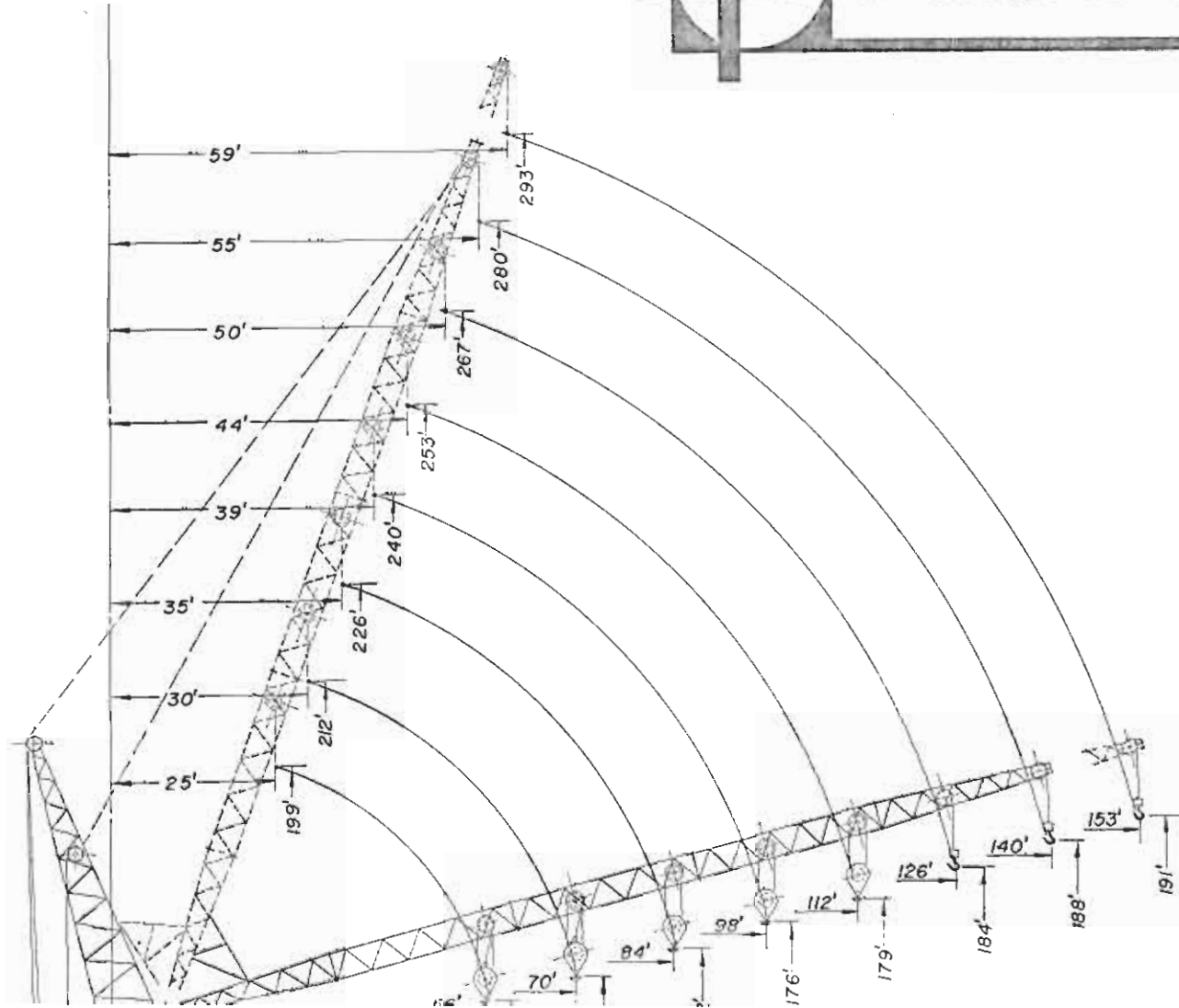
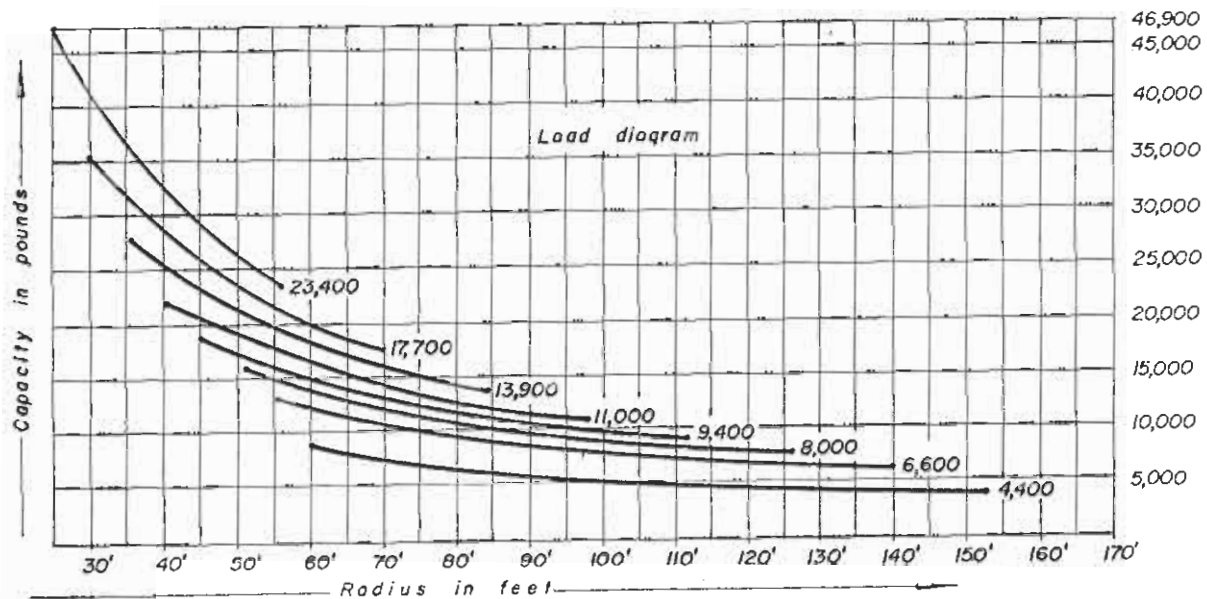
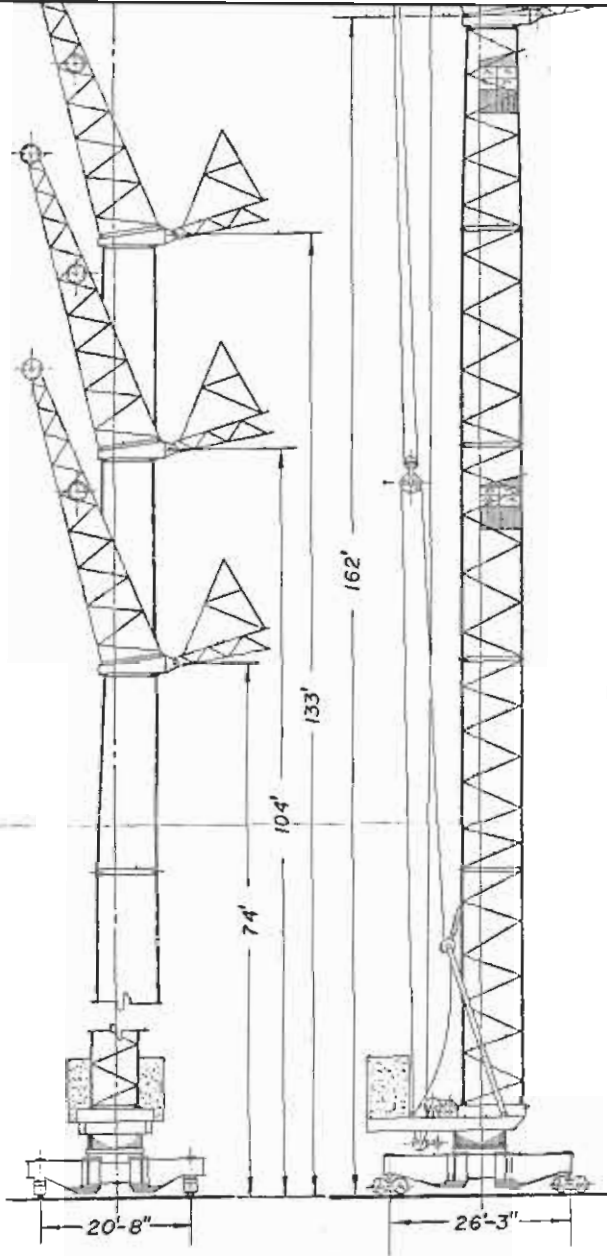


PECCO TOWERCRANE P.T. 1250





HOIST

Ward Leonard Generator 80 HP
 16' Hoist Motor 35 HP
 High Gear 16-313 RPM to 7,000 lbs.
 Medium Gear 8-162 RPM to 14,000 lbs.
 Low Gear 4-80 RPM to 17,500 lbs.
 Max. Line Speed 520 ft/min
 to 2,200 lbs

DERRICK

Derrick Motor 60 HP
 Speed from 150-250 1 Min.
 Line Speed 100 ft/min

SWING

Swing Motor 11 HP
 Swing Speed 1.2 RPM

TRAVEL

Travel Motors 4x2, 4 = 29.6 HP
 Travel Speed 160 ft/min.

TRACK GAUGE 20' - 7"

Min. Distance from Center of Track to Building 17'-7"
 Including 2'-0" Safety Clearance
 Max. Wind Pressure 2 x 13.5 tons
 Min. Track Curve Radius 27' - 0"

WEIGHT

Construction Weight 33.55 tons
 Ballast Weight 65.30 tons
 Working Weight 103.85 tons

ELECTRIC POWER SUPPLY

100 KVA 150 AMP
 440/3/40 cy
 245 ft. Power Conductor
 1 480' track 1

SPECIFICATIONS SUBJECT TO CHANGE WITHOUT NOTICE

TOWER CRANE MODEL PT 1250

TECHNICAL DATA SHEET NO. T 66 264

AMERICAN PECCO CORPORATION

MILLWOOD, NEW YORK
 914 - 762 0550

DOWNEY, CALIFORNIA
 213 - 923 4585