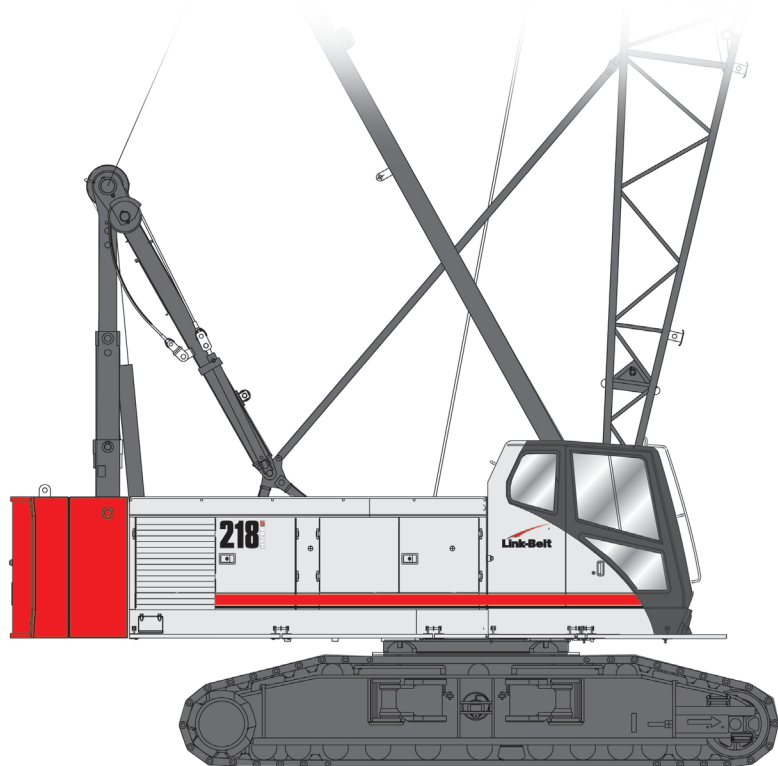


# It just gets better...

# 218

# HYLAB5



- New HYLAB cab with sliding right hand console
- SML-10 load moment limiter is now standard equipment -- utilizes boom dead end load cell
- Mitsubishi 6D24-TLA2H engine (tier 2 compliant)
- Remote mounted oil cooler with hydraulically driven fan

## Big, new HYLAB cab

Totally new cab offers substantially more room and is designed to be highly functional and very comfortable

- 18,000 BTU air-conditioning
- 19,000 BTU hot water heating
- Six-way adjustable seat
- Easy-to-read backlit gauges
- Adjustable armrest console with pilot-operated single-axis controls for all hoisting functions
- Full function SML-10 load moment indicator monitored by load sensing via boom hoist mounted load cell

## Same reliable, customer proven features

- 230' maximum boom height
- 265' maximum attachment: 190' boom + 75' jib
- Optional 40' - 150° angle boom
- Luffing attachment - 140' + 140'
- Optional third hoist drum
- Compact travel drives
- Sealed (oil-filled) track rollers, idler and drive sprockets and compact hydrostatic drives
- Self-cleaning 36" track shoes form extra wide gauge of 14' 6"
- Retracted and extended capacities

## Easy transportability and assembly

- Hydraulic counterweight removal system
- Transport weight is less than 77,000 lbs with boom base, live mast and hoist ropes
- Optional self-assembly package available

**World class features, great lift capacities, work application flexibility, pin-point control, bullet-proof reliability and easy, fast transport ...**  
**What are you waiting for?**

© Link-Belt is a registered trademark. Copyright 2003. All rights reserved. We are constantly improving our products and therefore reserve the right to change designs and specifications. Litho in U.S.A. 8/03 #4267A

**Link-Belt**  
C R A N E S

# LS-218H II

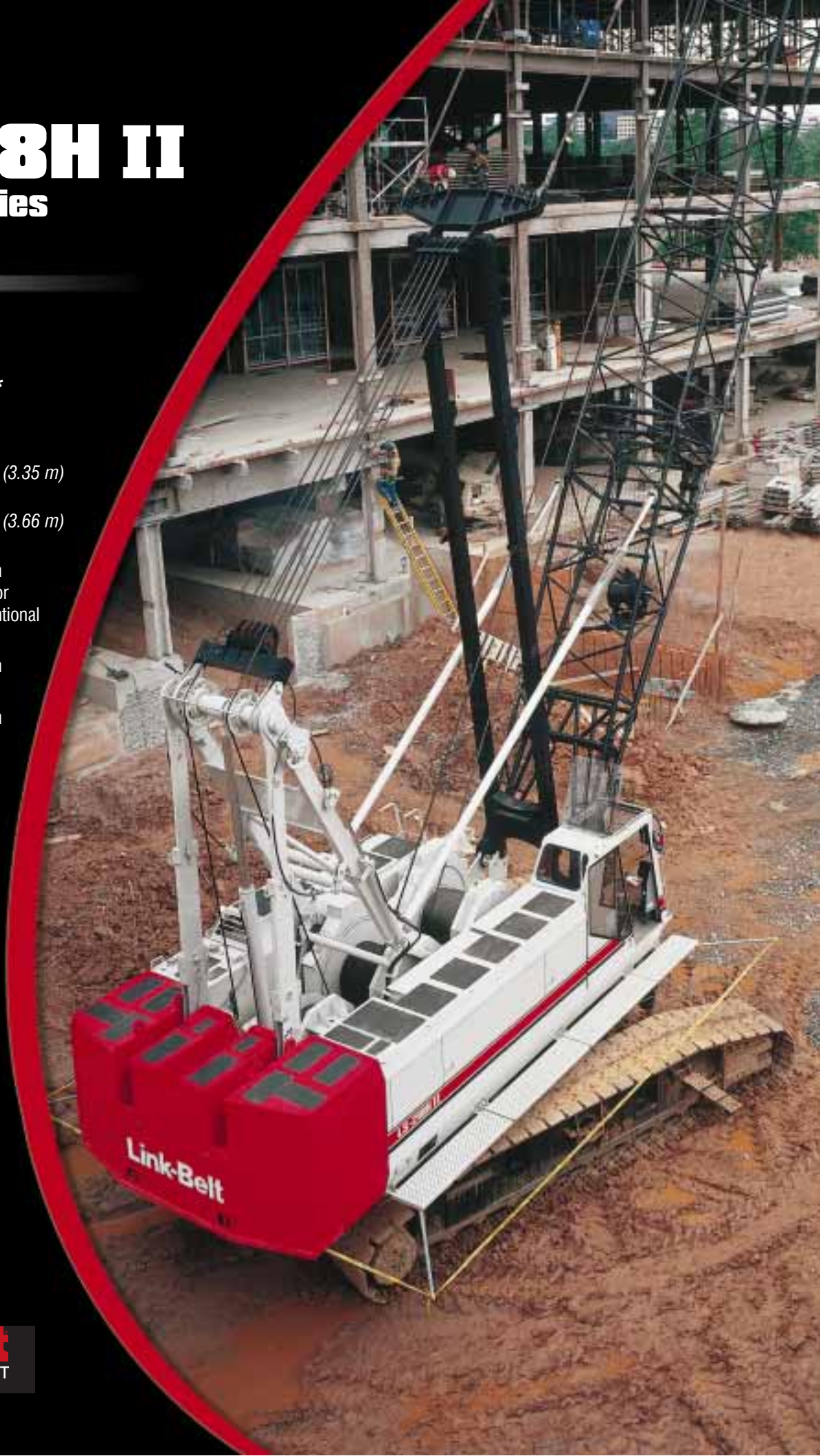
## HYLAB Series

### Lattice Boom Crawler Crane 110-ton (99.79 mt)\*

- 110-ton (99.79 mt) at 11' (3.35 m) radius with tube boom
- 100-ton (90.72 mt) at 12' (3.66 m) radius with angle boom
- 230' (70.10 m) maximum conventional tube boom or 150' (45.72 m) of conventional angle boom
- 265' (80.77 m) maximum tube attachment
- 269' (81.99 m) maximum tip height (tube boom)
- Transport weight is less than 80,000 lbs (36 287 kg) with boom base, live mast and hoist ropes
- Lightweight modules allow maximum boom + jib to transport on five loads
- 263 hp (196 kW) Mitsubishi engine
- 55,844 lbs (25 331 kg) maximum winch line pull
- 289 fpm (88.1 mpm) maximum winch speed
- Counterweight removal system with remote control for fast, simple self-assembly
- Sealed lower

*\*Tube boom. Angle boom capacity is 100 tons (90 mt)*

**Link-Belt**  
CONSTRUCTION EQUIPMENT





# LS-218H II

## HYLAB Series

Lattice Boom Crawler Crane  
110-ton (99.79 mt)

- **Pin-point control**
- **Bullet-proof reliability**
- **Big capacities**
- **Super versatility**
- **Easy, fast transport**

Since its launch more than a decade ago, Link-Belt's Hydraulic Lattice Boom (HYLAB) crane series is the most successful crawler crane product line ever built. HYLAB crawler cranes are the market leaders because of proven, customer driven design features.

Joining the HYLAB tradition of excellence is the LS-218H II, which features the innovative Quick Draw™ system, greater lift capacities, work application flexibility and a counterweight removal system which takes transportability and ease of operation to a new level.



*Load hoist drums contain a pilot-controlled bi-directional axial piston motor and a planetary gear-reduction unit to provide positive control under all load conditions.*



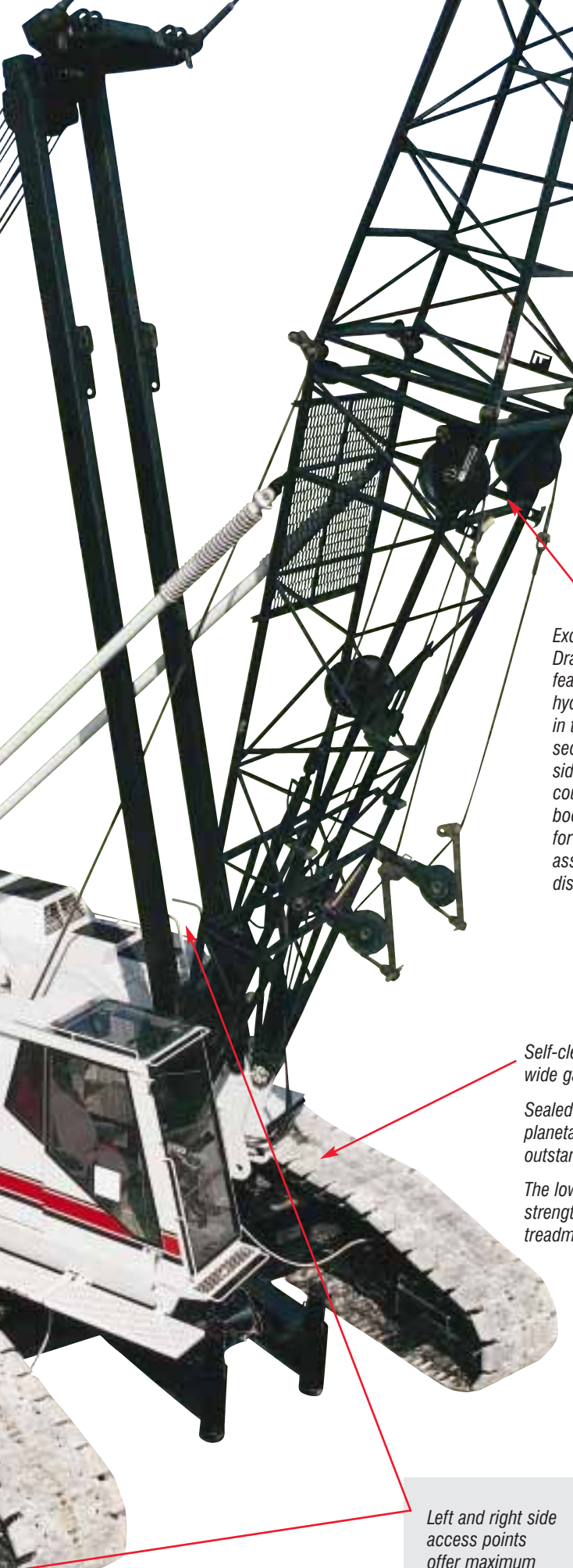
*Large, swing-out doors provide outstanding access to the engine and hydraulic components for easy maintenance.*

*Non-slip safety strips and grated catwalks provide sure-footed access to the crane upper.*



*Exclusive axle extension wings easily extend for simple, efficient self-assembly and disassembly of treadmembers.*

**Link-Belt**  
CONSTRUCTION EQUIPMENT



## Enjoy the versatility of both angle and tube boom

**Customize your crane and get the best of both worlds!**

Ideally suited for lift crane work and combination lift/duty cycle requirements, the LS-218H II, with **tubular boom**, offers greater lifting capacities and the longest boom and boom/jib combination in its class.

The **optional 40'-150' (12.19 - 45.72 m) angle boom**, the most rugged and robust angle boom available, is a top notch performer in dragline, clamshell, pile driving and other severe duty cycle applications. Outfitting the angle boom with the optional live mast makes for fast assembly and disassembly.

**Head machinery** includes standard lift crane sheaves with optional wide mouth sheaves available for duty cycle.

The boom top section features **standard pin-on points** for an optional 5' (1.5 m) tip extension in place of jib for providing clearance between working hoist lines.

To allow for pile driving, the LS-218H II is equipped with standard **pile driving lead connection points** on the boom top section as well as an optional pile driving lead adapter.

Optional **third hoist drum** is pinned to the front of the upper frame and has free-spooling capability for pile-driving applications.

The boom top section features **standard pin-on points** for adding optional attachments such as a fixed jib, tip extension and adapters for universal pile driving leads.

*Exclusive Quick Draw™ is an optional feature consisting of hydraulic cylinders in the boom base section that handle side frames, counterweights or boom extensions for quick and easy assembly and disassembly.*

*Self-cleaning 36" (.91 m) track shoes form an extra wide gauge of 14' 6" (4.42 m).*

*Sealed (oil-filled) track rollers, idler and drive planetaries and compact hydrostatic drives add up to outstanding reliability and maintenance-free operation.*

*The lower structure is made up of an all-welded, high strength, alloy steel carbody and precision machined treadmembers.*

*Maximum height of carbody when resting on pontoons is an impressive 42" (1.07 m)*

*Left and right side access points offer maximum accessibility.*





## Bulletproof hydraulics and a strong power plant

The HYLAB Series state-of-the-art variable displacement hydraulic power system has earned a job-proven reputation of **bullet-proof reliability**. Ask any owner.

The hoist drums and boom hoist drum are hydraulically-powered and fully independent. The hoist drums feature power up/down, mechanical drum pawls, grooved laggings and electronic drum rotation indicators.

Optional third drum, front-mounted, is available with controlled free-spooling option, for pile-driving requirements.

A state-of-the-art hydraulic system with counterbalance valves provides positive, smooth and precise load control.

The LS-218H II has a **"Fine Inching" control mode** for super precise control of load lowering, hoisting, boom hoist and travel.

This hydraulic hoist system features **free-fall control** operation or **automatic brake mode (power up/down)** for fast, efficient and safe operation.

The hydraulically-powered **free swing** provides smooth rotation, 360° fingertip-applied swing brake, two position house lock, two speed swing and an audio/visual swing alarm.

Powered by the **biggest and most quiet engine in its class**, the Mitsubishi engine is fuel efficient and has proven to be very reliable. It has a high cooling capacity and provides **high line speeds at higher line pulls**.



## Comfort and control at your fingertips

The HYLAB crane operations control center is ergonomically designed for maximum operating comfort and control with these standard features:

- Armchair mounted, pilot-operated hydraulic controls (swing, load and boom hoist) are designed to provide outstanding operator comfort.
- Eyes-forward instrument panel with backlit automotive-style gauges
- Ergonomically designed cockpit-style operator's cab provides exceptional visibility.

### Operator's cab console features include:

- Free-fall mode indicator
- Load indicator
- Anti-two block override switch
- Boom hoist override switch
- Limit alarm indicator light
- System override switch and indicator light
- Front, rear and third drum lock switch

### Other in-cab features, controls and monitors include:

- Drum rotation indicators
- Service monitoring system
- Six-way adjustable seat
- Tinted and tempered safety glass
- Sliding entry door, front window and side window
- Swing up roof window with wiper
- Door and window locks
- Heater and defroster with circulating fan
- Sun visor and dome light
- Dry chemical fire extinguisher
- Hand and foot throttle
- Bubble-type level



*The LS-218H II treadmembers retract to a narrow 12' (3.66 m) for transport and extend to 17' 6" (5.33 m), providing a wide, stable lifting platform.*



# Optimal transportability

## 5 loads & GO!

The LS-218H II easily transports full boom and jib on five loads. With its lightweight modular components, no other crane is faster, easier or more efficient to transport.

## Fast assembly & disassembly

Link-Belt's optional **Quick Draw™** feature dramatically simplifies self-assembly, disassembly and load-out. Hydraulic cylinders in the boom base section pick up and handle the boom extensions, counterweights and treadmembers.

The exclusive, **all-hydraulic counterweight** removal system easily handles both counterweights (25,350 lbs (11 499 kg) each).

On the new LS-218H II, you can remove both counterweights, both sideframes and catwalks, pin the live mast and gantry, and be ready to load out. Reverse the process and be ready to stab boom in 45 minutes.



*Hand-held remote controls make easy work of handling counterweight modules.*



*Link-Belt's optional Quick Draw system simplifies assembly, disassembly and counterweight removal*

## The LS-218H II is big, fast and strong with greater reach and capacities

The best lattice boom crawler crane in its class is even better. It can **outpick the competition** virtually everywhere on the chart. The LS-218H II also has **blocked over-end capacities**, challenging higher rated capacity cranes.

The LS-218H II **meets OSHA requirements** for anti-two block and automatic brake systems on cranes used to handle personnel.

**Outreaching** the nearest competitor, the LS-218H II boasts a **maximum tip height of 269' (81.99 m)** with the boom and jib used in combination.

→ **Standard toe plates enable the operator to have blocked over-end capacities.**





## Available attachments provide strength and versatility

### Conventional open throat boom

- 40' - 230' (12.19 - 70.10 m) conventional tube boom
- 40' - 150' (12.19 - 45.72 m) angle boom
- Using pin-connected sections and open throat top section, the LS-218H II provides the longest boom lengths in this machine class.
- Main chord members are made with 100,000 psi yield material with high strength lattice.
- Boom suspension is achieved through 10-part boom hoist reeving with dual pendant ropes.
- Standard equipment deflector rollers protect lattice sections from wire rope scuffing.

### Auxiliary 5' (1.5 m) tip extension

- Optional — designed to provide clearance between two working hoist lines

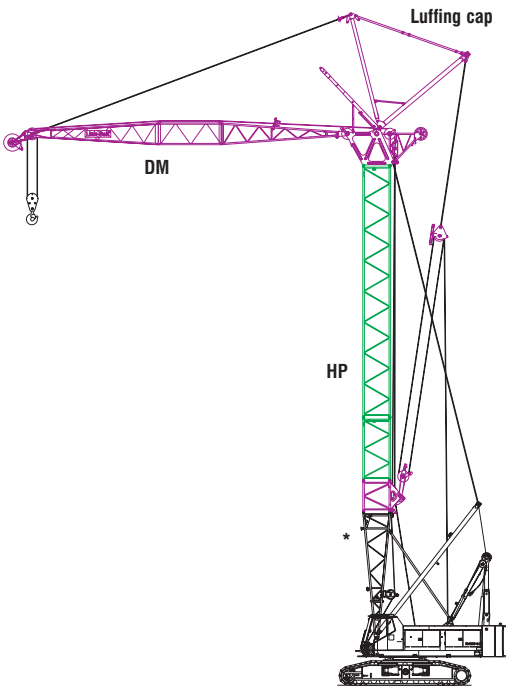
### Boom and jib — open throat

- 190' + 75' (57.91 m + 22.86 m) tube boom + fixed jib
- 150' + 60' (45.72 + 18.29 m) angle boom + fixed jib
- Jib is common to other Link-Belt models.

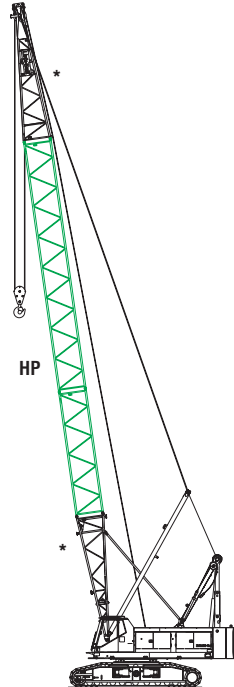
### Luffing boom attachment

- 140' + 140' (42.67 + 42.67 m) luffing boom + luffing jib
- Conventional boom on LS-218H II also serves as luffing boom
- Luffing attachment for the LS-218H II is the latest design with luffing jib reeving anchored off the luffing boom to keep reeving down low within operator's view — easy to assemble.
- Top section assembly of luffer transports as one piece and makes for fast, easy assembly to the luffing jib.
- This attachment flexibility and simplicity makes the LS-218H II — conventional or with luffing attachment — the first machine of choice to go out of the yard and to the job!

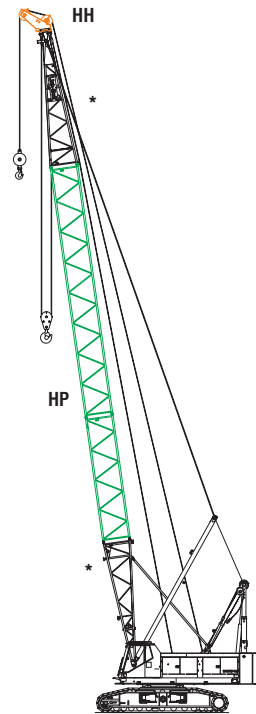
All boom sections are manufactured in Lexington, Kentucky for fast, easy service, parts and replacement.



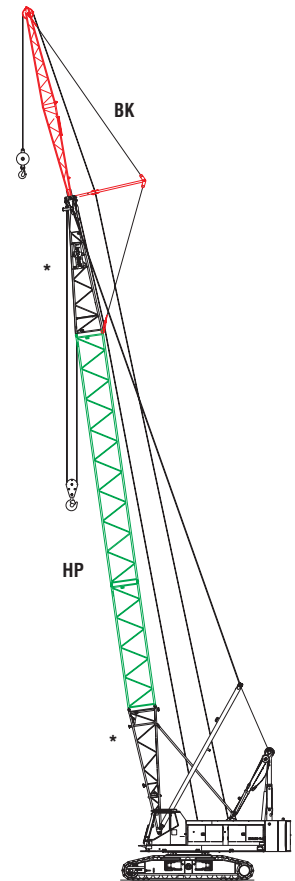
Luffing boom & luffing jib



Conventional open throat boom



Boom with 5' auxiliary tip



Boom and jib - open throat

\* Base/top original LS-218H II



**Link-Belt**  
CONSTRUCTION EQUIPMENT

Lexington, Kentucky  
[www.linkbelt.com](http://www.linkbelt.com)

© Link-Belt is a registered trademark. Copyright 2001. All rights reserved. We are constantly improving our products and therefore reserve the right to change designs and specifications.

Litho in U.S.A. 11/01 #4267 (supersedes #4256)