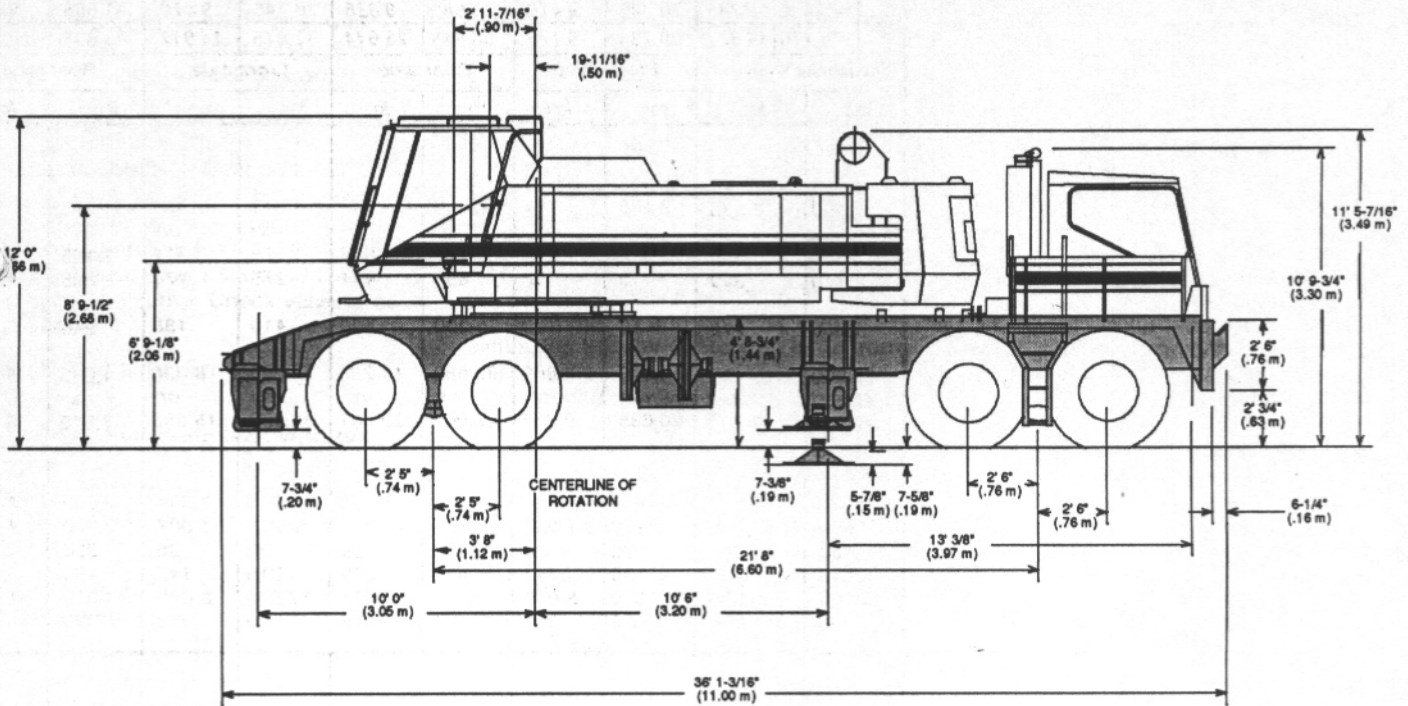


Specifications

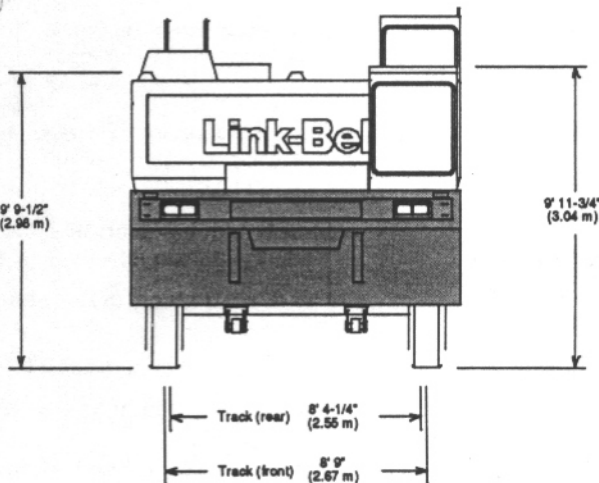
Lattice Boom Truck Crane

HC-228H

125 Ton (113 metric ton)



Not to Scale



Not to Scale

General dimensions

	feet	meters
Overall width, outriggers extended, (over floats)	23' 6"	7.16
Overall width, outriggers extended, (c/l of jacks)	21' 0"	6.40
Overall width, outriggers retracted	11' 0"	3.35
Vehicle clearance circle over outside of front bumper	104' 2"	31.73
Vehicle clearance circle over outside of front bumper counterweight	105' 10"	32.25
Minimum ground clearance (at bottom of front bogie beams)	11"	.28
Counterweight tailswing (at corners)	15' 11"	4.85
Overall cab width (upper)	11' 0"	3.35
Radius of boom hinge pin	35'-7/16"	.90
Height of boom hinge pin	6' 9"	1.98
Ground clearance under counterweight	5' 2"	1.58

Link-Belt® HC-228H lifting crane capacities — open throat boom

PCSA Class12-775
Refer to **notes** page 6

Boom — tubular; 70" (1.77m) wide, 62" (1.57m) deep with open throat top section, 1-3/8" (35 mm) diameter boom pendants & boom live mast.

Jib — tubular; 36" (.91 m) wide, 30" (.76m) deep.

Counterweights — Refer to charts below.

Mounting — rubber tire mobile base: Link-Belt; 8 x 4 drive, 260" (6.60m) wheelbase, 11' 0" (3.35m) wide.

Counterweights					
"A" upper		"AB" upper		"A" bumper	
Pounds	Kilograms	Pounds	kilograms	Pounds	kilograms
23,000	10 433	42,330	19 201	13,500	6 124

Open throat boom or boom + jib machine can **lift off** ground unassisted, without load.

Standard HC-228H must be equipped with the counterweight combinations below when the indicated boom or boom + jib lengths are used.	Minimum/maximum boom or boom + jib lengths allowed	On outriggers							
		Over rear				Over side			
		Boom		Boom + jib		Boom		Boom + jib	
		Feet	meters	Feet	meters	Feet	meters	Feet	meters
O + O	Minimum	50	15.24	50 + 30	15.24 + 9.14	50	15.24	50 + 30	15.24 + 9.14
	Maximum	160	48.77	120 + 70	36.58 + 21.34	140	42.67	110 + 70	33.53 + 21.34
A + O	Minimum	50	15.24	50 + 30	15.24 + 9.14	50	15.24	50 + 30	15.24 + 9.14
	Maximum	190	57.91	160 + 70	48.77 + 21.34	180	54.86	140 + 70	42.67 + 21.34
A + A	Minimum	50	15.24	50 + 30	15.24 + 9.14	50	15.24	50 + 30	15.24 + 9.14
	Maximum	220	67.06	180 + 70	54.86 + 21.34	190	57.91	150 + 70	45.72 + 21.34
AB + O	Minimum	50	15.24	50 + 30	15.24 + 9.14	50	15.24	50 + 30	15.24 + 9.14
	Maximum	220	67.06	180 + 70	54.86 + 21.34	210	64.01	170 + 70	51.82 + 21.34
AB + A	Minimum	50	15.24	50 + 30	15.24 + 9.14	50	15.24	50 + 30	15.24 + 9.14
	Maximum	240	73.15	210 + 70	64.01 + 21.34	210	64.01	180 + 70	54.86 + 21.34

Machine **travel** ^① with open throat boom + jib, with no load. ^②

Standard HC-228H must be equipped with the counterweight combinations below when the indicated boom or boom + jib lengths are used.	Minimum/maximum boom or boom + jib lengths allowed	On tires ^③							
		Jobsite moves at 1 mph (1.61 km/h) with boom or boom + jib in the air ^④ , and with upper facing rear only.				Jobsite moves at 5 mph (8.05 km/h), with boom or boom + jib horizontal over rear only, and supporting with standard suspension.			
		Boom		Boom + jib		Boom		Boom + jib	
		Feet	meters	Feet	meters	Feet	meters	Feet	meters
O + O	Minimum	50	15.24	n/a	n/a	50	15.24	n/a	n/a
	Maximum	160	48.77	n/a	n/a	70	21.34	n/a	n/a
A + O	Minimum	50	15.24	n/a	n/a	50	15.24	n/a	n/a
	Maximum	190	57.91	n/a	n/a	100	30.48	n/a	n/a
A + A	Minimum	50	15.24	n/a	n/a	50	15.24	n/a	n/a
	Maximum	220	67.06	n/a	n/a	130	39.62	n/a	n/a
AB + O	Minimum	50	15.24	n/a	n/a	50	15.24	n/a	n/a
	Maximum	220	67.06	n/a	n/a	130	39.62	n/a	n/a
AB + A	Minimum	50	15.24	50 + 30	15.24 + 9.14	70	21.34	50 + 30	15.24 + 9.14
	Maximum	240	73.15	210 + 70	64.01 + 21.34	150	45.72	120 + 70	36.58 + 21.34

① Hook block may be carried only when attached to carrier.

② Limited to 85% of available stability with machine standing level on firm supporting surface.

③ For air pressure in front and rear tires refer to operator's manual or tire inflation chart on machine.

④ For minimum and maximum boom angles refer to operator's manual.

Caution: This material is for reference only. Operator must refer to in-cab capacity plate to determine allowable machine lifting capacities and operating procedures.

WARNING AND OPERATING INSTRUCTIONS

Read and understand these operating instructions and the chart values before operating crane. Operation which does not follow these instructions may result in an accident.

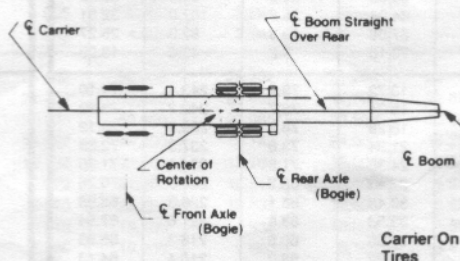
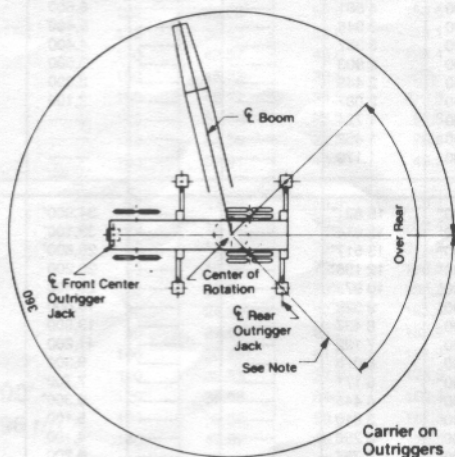
General:

1. Rated lifting capacities as shown on lift chart pertain to this machine as originally manufactured and normally equipped by Link-Belt Construction Equipment Company. Modifications to the machine or use of optional equipment other than that specified can result in a reduction of capacity.
2. Construction equipment can be dangerous if improperly operated or maintained. Operation and maintenance of this machine must be in compliance with the information in the operator's, parts and safety manuals supplied with the machine. If these manuals are missing, order replacements through the distributor.
3. The operator and other personnel associated with this machine shall fully acquaint themselves with the latest applicable American National Standards Institute (ANSI) safety standards for cranes.

Lifting Crane Notes:

1. Capacities shown are not more 85% of the tipping loads with machine standing level on firm supporting surface. A deduction must be made from these capacities for weight of hook block, hook, sling, grapple, load weighing devices, etc. When using main hook while jib is attached reduce capacities by values shown on jib capacity chart. See operator's manual for all limitations when raising or lowering attachment.
2. For recommended reeving, parts of line, wire rope type and wire rope inspection, see operator's manual and parts manual.
3. For lifting 250,000 lb. (113 400 kg) capacity, 12 part load hoist line (7/8" - 22.23 mm - dia., type "N" wire rope) is required.
4. Do not swing over side until all four outrigger beams are fully extended, all five jacks are extended until all tires are clear of the ground and machine is properly leveled on a firm supporting surface.
5. The least stable rated condition is over the side.
6. The jib cannot be used on a boom longer than 210' (64.01 m). For boom-jib combination see plate no. C4P0002.
7. Maximum boom length without jib is 240' (73.15 m).
8. These capacities apply only to the machine as originally manufactured and normally equipped by Link-Belt Construction Equipment Company.
9. Machine equipped with "A" or "AB" upper counterweight - do not swing over side until outriggers have been set.
10. Capacity columns headed "A + A" indicate 23,000 lb. (10 433 kg) "A" upper counterweight with 13,500 lb. (6 124 kg) "A" bumper counterweight.
11. Capacity columns headed "AB + A" indicate 42,330 lb. (19 201 kg) "AB" upper counterweight with 13,500 lb. (6 124 kg) "A" bumper counterweight.
12. Load ratings shown on this chart are based on freely suspended loads and make no allowance for such factors as the effect of wind, ground conditions and operating speeds. The operator therefore shall reduce load ratings in order to take these conditions into account.

Working Areas



Note:

1. These lines determine the limiting position of any load for operation within working areas indicated.
2. Do not swing over side until all four outrigger beams are fully extended, all five jacks are extended until all tires are clear of the ground and machine is properly leveled on a firm supporting surface.

Working Range

