

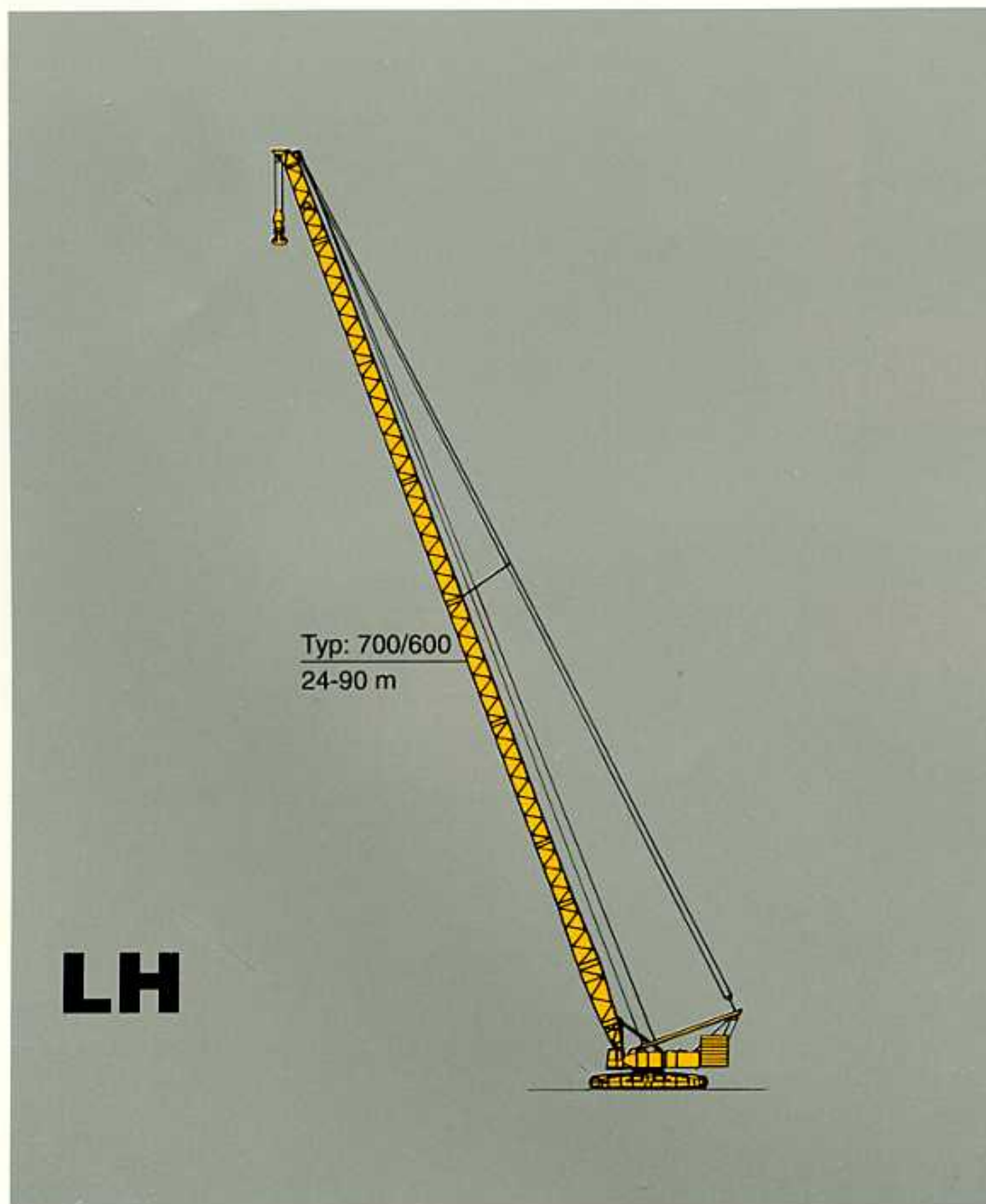
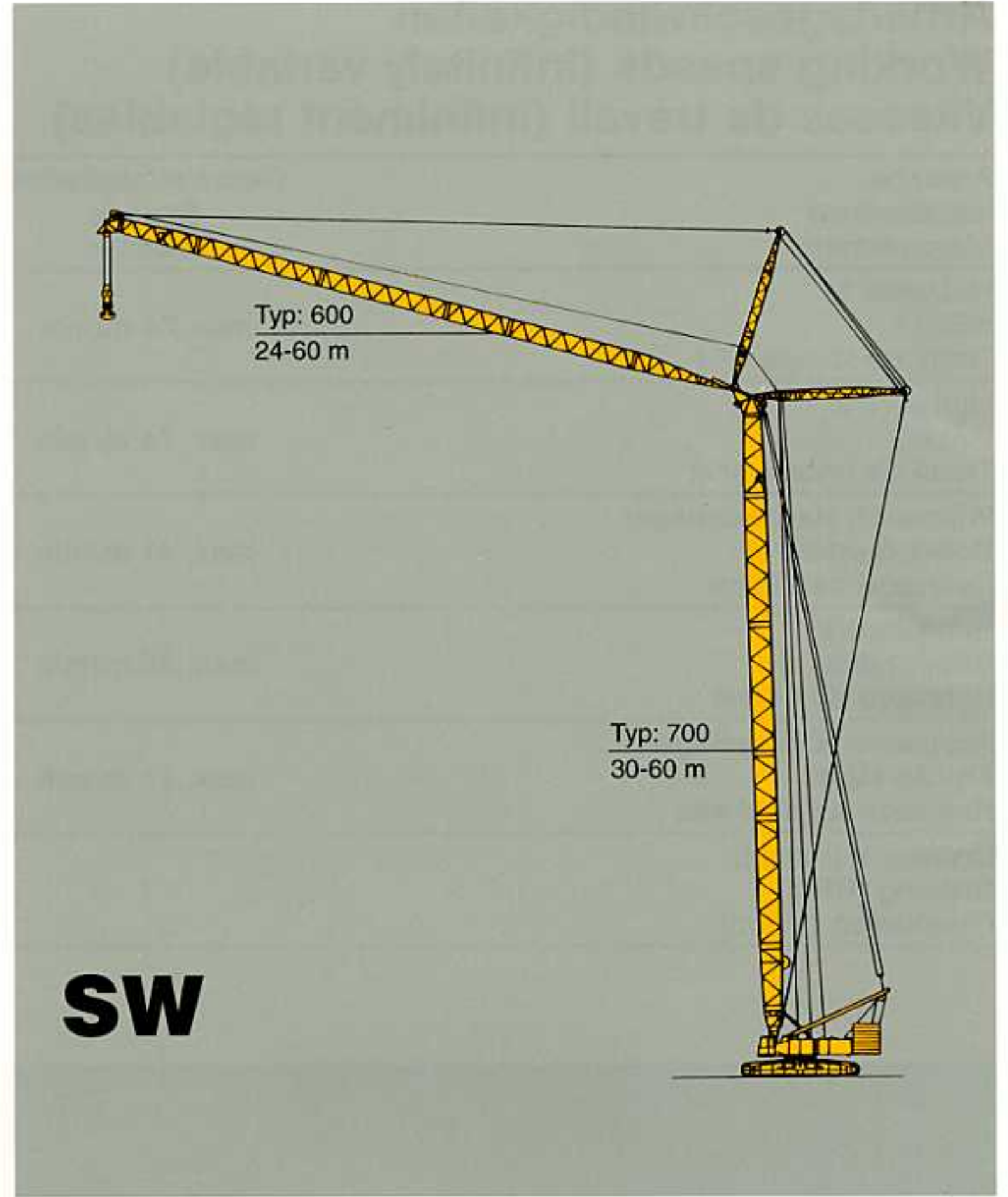
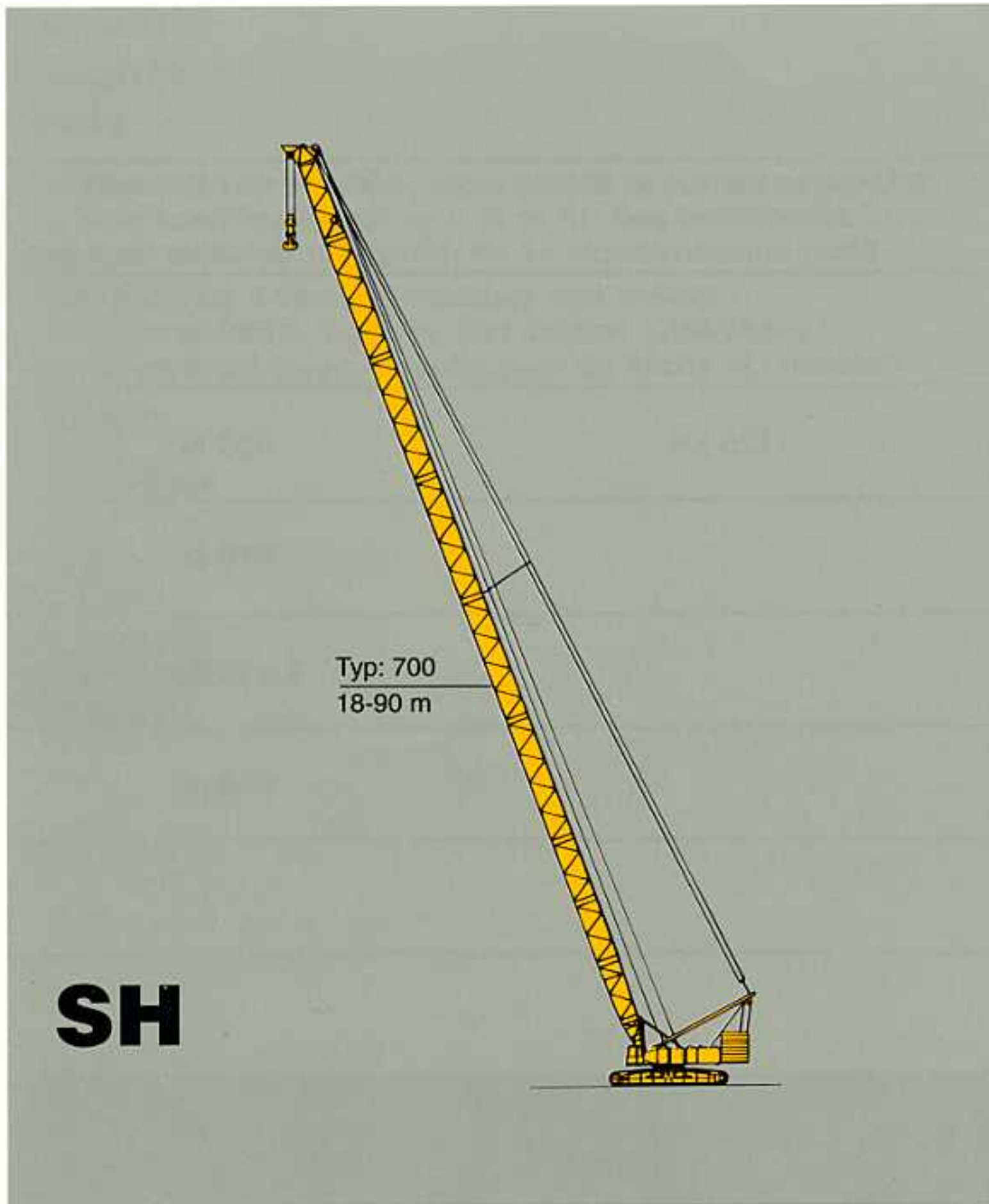
Demag CC 2600

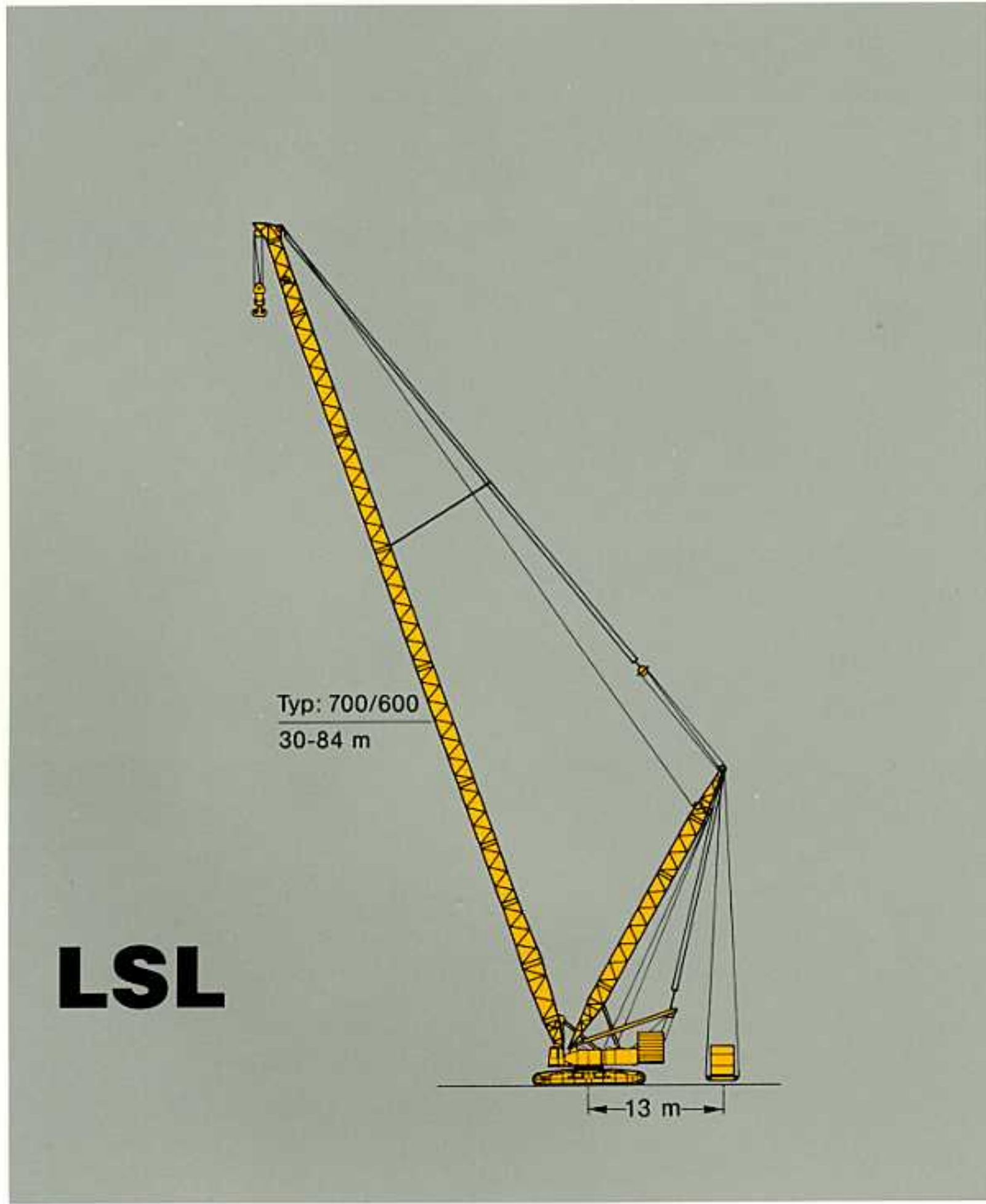
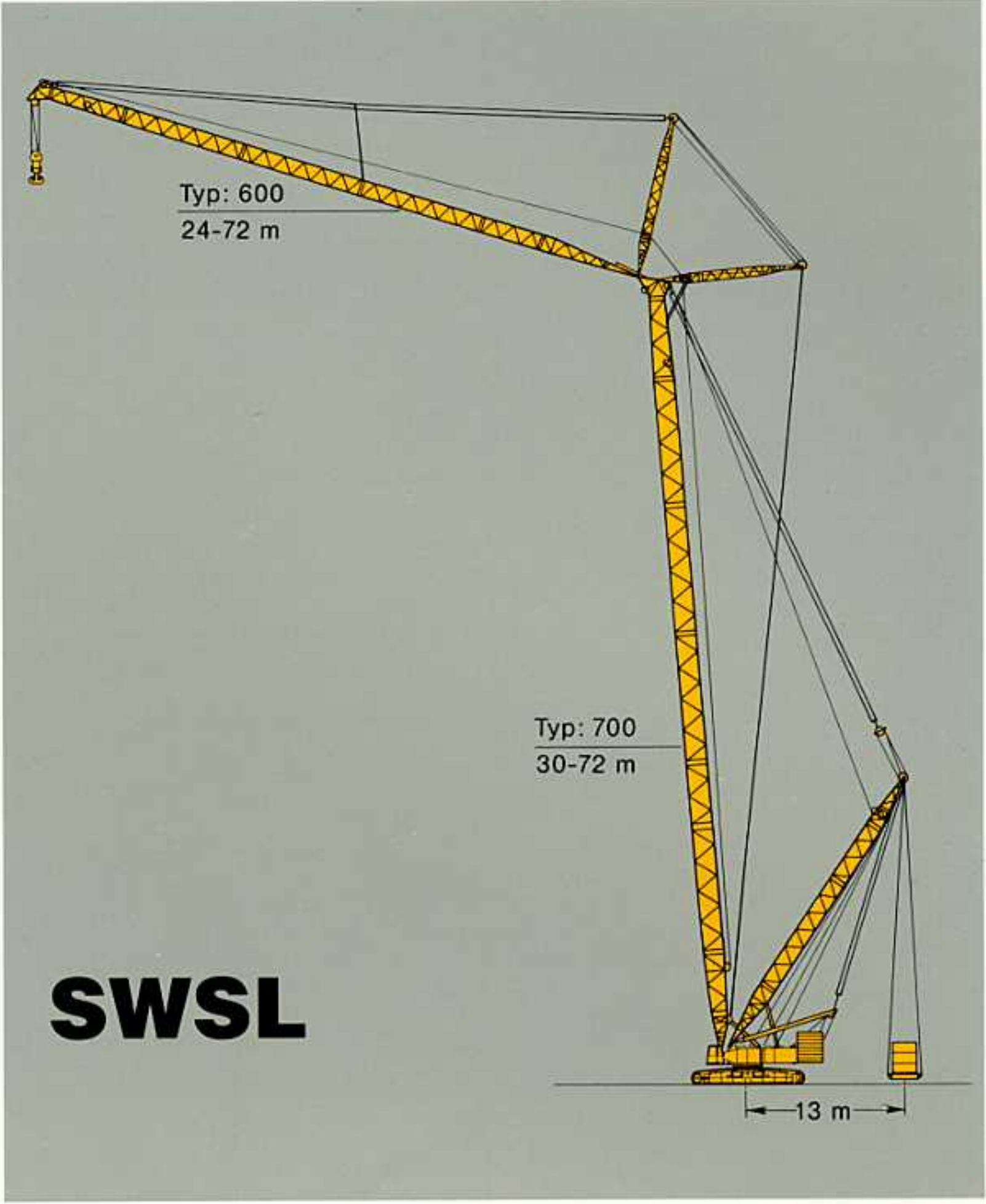


Ausleger-Kombinationen

Boom combinations

Combinaisons de flèche







Tragfähigkeiten Hauptausleger mit Superlift

Lifting capacities main boom with Superlift

Capacités de levage flèche principale avec Superlift

 **8 m**
 **131 t**
SL-Radius 15 m
75% **360°**

| Hauptausleger Main Boom Flèche | Ausladung Radius Portée | Superlift-Gegengewicht · Superlift Counterweight · Contrepoids de Superlift | | | | | |
|--------------------------------------|-------------------------------|---|------|-------|-------|-------|-------|
| | | 0 t | 50 t | 100 t | 150 t | 200 t | 250 t |
| m | m | t | t | t | t | t | t |
| 30 m | 7 | 345* | 500* | - | - | - | - |
| | 8 | 330* | 454 | 500 | - | - | - |
| | 9 | 282* | 402* | 470* | 500* | - | - |
| | 10 | 233 | 348* | 427* | 475* | - | - |
| | 12 | 171 | 258* | 344* | 409* | 445* | - |
| | 14 | 134 | 204 | 273* | 342* | 389* | - |
| | 16 | 110 | 168 | 225 | 283* | 339* | - |
| | 18 | 92 | 142 | 191 | 241 | 290* | 331* |
| | 20 | 79 | 123 | 166 | 209 | 252* | 296* |
| | 22 | 69 | 108 | 146 | 185 | 223 | 262* |
| | 24 | 61 | 96 | 130 | 165 | 200 | - |
| | 26 | 55 | 86 | 118 | 149 | 181 | - |
| 28 | 49 | 78 | 107 | 136 | 165 | - | |
| 36 m | 8 | 355* | 452* | 490* | - | - | - |
| | 9 | 281* | 400* | 468* | - | - | - |
| | 10 | 232 | 347* | 425* | 472* | - | - |
| | 12 | 170 | 257* | 343* | 407* | 443* | - |
| | 14 | 133 | 202 | 272* | 341* | 387* | - |
| | 16 | 108 | 166 | 224 | 282* | 337* | - |
| | 18 | 91 | 140 | 190 | 239 | 289* | 329* |
| | 20 | 78 | 121 | 164 | 208 | 251* | 294* |
| | 22 | 68 | 106 | 145 | 183 | 222 | 260* |
| | 24 | 59 | 94 | 129 | 163 | 198 | 233 |
| | 26 | 53 | 84 | 116 | 147 | 179 | 210 |
| | 28 | 47 | 76 | 105 | 134 | 163 | 192 |
| 30 | 43 | 69 | 96 | 123 | 149 | - | |
| 42 m | 8 | 354* | 435* | - | - | - | - |
| | 9 | 280* | 398* | 435* | - | - | - |
| | 10 | 230* | 346* | 423* | 435* | - | - |
| | 12 | 169 | 255* | 342* | 405* | 435* | - |
| | 14 | 132 | 201 | 270* | 340* | 385* | - |
| | 16 | 107 | 165 | 223* | 280* | 336* | - |
| | 18 | 90 | 139 | 189 | 238* | 288* | 327* |
| | 20 | 76 | 120 | 163 | 206 | 250* | 292* |
| | 22 | 66 | 105 | 143 | 182 | 220* | 259* |
| | 24 | 58 | 93 | 127 | 162 | 197 | 231* |
| | 26 | 51 | 83 | 114 | 146 | 177 | 209 |
| | 28 | 46 | 75 | 104 | 133 | 161 | 190 |
| 30 | 41 | 68 | 95 | 121 | 148 | 175 | |
| 34 | 34 | 57 | 80 | 103 | 126 | - | |
| 38 | 29 | 49 | 69 | 90 | 110 | - | |
| 48 m | 9 | 279* | 395* | - | - | - | - |
| | 10 | 229* | 345* | 395* | - | - | - |
| | 12 | 168 | 254* | 341* | 395* | - | - |
| | 14 | 131 | 200* | 269* | 338* | 383* | - |
| | 16 | 106 | 164 | 221* | 279* | 334* | - |
| | 18 | 88 | 138 | 187 | 237* | 286* | 326* |
| | 20 | 75 | 118 | 162 | 205* | 248* | 291* |
| | 22 | 65 | 103 | 142 | 180 | 219* | 257* |
| | 24 | 57 | 91 | 126 | 161 | 195 | 230* |
| | 26 | 50 | 81 | 113 | 144 | 176 | 207* |
| | 28 | 44 | 73 | 102 | 131 | 160 | 189 |
| | 30 | 40 | 66 | 93 | 120 | 146 | 173 |
| 34 | 32 | 56 | 79 | 102 | 125 | - | |
| 38 | 27 | 47 | 68 | 88 | 108 | - | |
| 42 | 22 | 41 | 59 | 77 | 96 | - | |

* Doppelunterflasche erforderlich!

* Double hook block required!

* Exige crochet à deux moufles!

Tragfähigkeiten Hauptausleger mit Superlift

Lifting capacities main boom with Superlift

Capacités de levage flèche principale avec Superlift

 **8 m**  **149 t SL-Radius 15 m** **75% 360°**

| Hauptausleger Main Boom Flèche | Ausladung Radius Portée | Superlift-Gegengewicht · Superlift Counterweight · Contrepoids de Superlift | | | | | |
|--------------------------------------|-------------------------------|---|------|-------|-------|-------|-------|
| | | 0 t | 50 t | 100 t | 150 t | 200 t | 250 t |
| m | m | t | t | t | t | t | t |
| 54 m | 9 | 305* | - | - | - | - | - |
| | 10 | 251* | 350* | - | - | - | - |
| | 12 | 184* | 270* | 350* | - | - | - |
| | 14 | 143 | 213* | 282* | 349* | - | - |
| | 16 | 116 | 174 | 232* | 290* | 339* | - |
| | 18 | 97 | 147 | 196* | 246* | 295* | 328* |
| | 20 | 83 | 126 | 169 | 213* | 256* | 295* |
| | 22 | 71 | 110 | 148 | 187* | 225* | 264* |
| | 24 | 62 | 97 | 132 | 166 | 201* | 236* |
| | 26 | 55 | 87 | 118 | 150 | 181* | 213* |
| | 28 | 49 | 78 | 107 | 136 | 165 | 193* |
| | 30 | 44 | 71 | 97 | 124 | 151 | 177* |
| | 34 | 36 | 59 | 82 | 105 | 128 | 151 |
| | 38 | 30 | 50 | 70 | 91 | 111 | 132 |
| 42 | 25 | 43 | 61 | 80 | 98 | 116 | |
| 46 | 21 | 38 | 54 | 71 | 87 | 104 | |
| 60 m | 9 | 304* | - | - | - | - | - |
| | 10 | 250* | 310* | - | - | - | - |
| | 12 | 183* | 269* | 310* | - | - | - |
| | 14 | 142 | 211* | 281* | 310* | - | - |
| | 16 | 115 | 173* | 231* | 288* | 310* | - |
| | 18 | 96 | 145 | 195* | 244* | 294* | 310* |
| | 20 | 81 | 125 | 168* | 211* | 255* | 293* |
| | 22 | 70 | 109 | 147 | 186* | 224* | 263* |
| | 24 | 61 | 96 | 130 | 165* | 200* | 234* |
| | 26 | 54 | 85 | 117 | 148 | 180* | 211* |
| | 28 | 48 | 77 | 106 | 134 | 163* | 192* |
| | 30 | 43 | 69 | 96 | 123 | 149 | 176* |
| | 34 | 34 | 58 | 81 | 104 | 127 | 150 |
| | 38 | 28 | 49 | 69 | 89 | 110 | 130 |
| 42 | 23 | 42 | 60 | 78 | 96 | 115 | |
| 46 | 19 | 36 | 53 | 69 | 86 | 102 | |
| 50 | 16 | 32 | 47 | 62 | 77 | 92 | |
| 54 | 13 | 28 | 42 | 56 | 69 | 83 | |
| 66 m | 10 | 250* | 285* | - | - | - | - |
| | 12 | 182* | 269* | 285* | - | - | - |
| | 14 | 141 | 211* | 280* | - | - | - |
| | 16 | 114 | 172* | 230 | 285* | - | - |
| | 18 | 95 | 145* | 194* | 243* | 285* | - |
| | 20 | 81 | 124 | 167* | 210* | 254* | 285* |
| | 22 | 69 | 108 | 146* | 185* | 223* | 262* |
| | 24 | 60 | 95 | 130 | 164* | 199* | 234* |
| | 26 | 53 | 84 | 116 | 147* | 179* | 210* |
| | 28 | 47 | 76 | 105 | 133 | 162* | 191* |
| | 30 | 42 | 68 | 95 | 122 | 148* | 175* |
| | 34 | 33 | 57 | 80 | 103 | 126 | 149* |
| | 38 | 27 | 48 | 68 | 88 | 109 | 129 |
| | 42 | 22 | 41 | 59 | 77 | 95 | 113 |
| 46 | 17 | 35 | 51 | 68 | 84 | 101 | |
| 50 | 14 | 30 | 45 | 60 | 75 | 90 | |
| 54 | 11 | 26 | 40 | 54 | 68 | 82 | |
| 58 | - | 23 | 36 | 49 | 62 | 75 | |
| 72 m | 10 | 249* | - | - | - | - | - |
| | 12 | 181* | 263* | - | - | - | - |
| | 14 | 141* | 210* | 263* | - | - | - |
| | 16 | 113 | 171* | 229* | 263* | - | - |
| | 18 | 94 | 144* | 193* | 243* | 263* | - |
| | 20 | 80 | 123 | 166* | 210* | 253* | - |
| | 22 | 68 | 107 | 145* | 184* | 222* | 261* |
| | 24 | 59 | 94 | 129 | 163* | 198* | 233* |
| | 26 | 52 | 83 | 115 | 146* | 178* | 209* |
| | 28 | 46 | 75 | 104 | 132* | 161* | 190* |
| | 30 | 41 | 67 | 94 | 121 | 147* | 174* |
| | 34 | 32 | 55 | 79 | 102 | 125 | 148* |
| | 38 | 26 | 46 | 67 | 87 | 108 | 128 |
| | 42 | 20 | 39 | 58 | 76 | 94 | 112 |
| 46 | 16 | 34 | 50 | 67 | 83 | 100 | |
| 50 | 13 | 29 | 44 | 59 | 74 | 89 | |
| 54 | 10 | 25 | 39 | 53 | 67 | 81 | |
| 58 | - | 21 | 35 | 48 | 60 | 73 | |
| 62 | - | 18 | 31 | 43 | 55 | 67 | |

* Doppelunterflasche erforderlich!
 * Double hook block required!
 * Exige crochet à deux moufles!

Arbeitsbereiche Hauptausleger mit Superlift
Working ranges main boom with Superlift
Portées de flèche principale avec Superlift

SSL
LSL

