



Kato Super75R

(NK75-v2) 7.0t Hydraulic Truck Crane

SPECIFICATION

CRANE SPECIFICATION

Name	7 Tonne Truck Crane
Model	Kato NK75-v2 Fully Hydraulic Truck Crane

Crane Performance

Rated Lifting Capacity	7.0 Tonne @ 2.5m 6.65m Boom 4.9 Tonne @ 3.5m 11.60m Boom 3.9 Tonne @ 3.5m 16.55m Boom 2.0 Tonne @ 5.0m 21.50m Boom 1.3 Tonne @ 7.0m 6.65m Boom - 21.5m Boom + Rooster Sheave With Outriggers] With Outriggers
Boom Length	6.65m (Retracted) 21.50m (Full Extension)	
Maximum Lifting Height	21.80m (Boom) 22.10m (Rooster Sheave)	
Hoisting Rope Speed	Main 54m/min (Low Speed) 110m/min (High Speed) (4 th Layer) Auxiliary 44m/min (Low Speed) 90m/min (High Speed) (2 nd Layer)	
Hook Speed	Main Hook 9.0m/min (Low Speed) 18.3m/min (High Speed) (6 Ropes) (4 th Layer) Auxiliary Hook 44.0m/min (Low Speed) 90.0m/min (High Speed) (1 Rope) (2 nd Layer)	
Boom Extension Speed	14.85/40 sec	
Boom Hoisting Angle	-6° ~ 80°	
Boom Lifting Time	-6° ~ 80°/20 sec	
Slewing Speed	2.5 rpm	

Wire Rope

Main	IWRC 6×WS(26) ø10×120m Non-Rotating Type
Auxiliary	IWRC 6×WS(26) ø10×50m Non-Rotating Type

Hydraulic System

Oil Pump	3 Section High-Pressure Gear Pump
Hoisting Oil Motor	Axial Plunger Type
Slewing Oil Motor	Inscription Gear Type
Control Valve	Multiple Automatic Return Type (with Flow Regulating Valve with Pressure Compensation and Unloading Valve)
Cylinder	High-Pressure Double Acting Type
Oil Reservoir Capacity:	120 litres

Upper Slewing Body and Structure

Hoisting Device	Oil Motor Drive Spur Gear Speed Reduction Type (with Automatic Brake Device • Free Fall Device) 2 Axles 2 Drums
Slewing Device	Oil Motor Drive Planet Gear Speed Reduction Type
Slewing Circle	Ball Bearing Type
Boom Hoisting Device	Hydraulic Cylinder Direct Push Type
Boom Extension Retraction Device	Hydraulic Cylinder and Wire Rope Combination Type
Outrigger Device	Hydraulic Vertical Support Type
Front Jack	Hydraulic Type

Safety Devices

	ACS (with Fully Automatic Overload Protector • Voice Alarm Device), Boom Free Fall Prevention Device, Overwinding Protector, Drum Hold Safety Device, Automatic Brake Device, Hydraulic Safety Valve, Outrigger Lock Device, Angle Indicator, Front Jack Overload Warning Device, Slewing Brake Device, Outrigger Extension Width Automatic Detector, Slewing Warning Light, Drum Revolution Detector
--	--

Standard Equipment

	Crane Driver's Cab Heater, Crane Driver's Cab Fan, Crane Driver's Cab AM/FM Radio with Clock
--	---

Rated Lifting Capacity Table (1)

Outriggers Fully Extended (4.4m) with Front Jack - Over Side, Over Rear, Over Front					
• Outriggers Fully Extended (4.4m) without Front Jack - Over Side, Over Rear					
• Outriggers Intermediately Extended (3.0m) - Over Rear					
• Outriggers Fully Retracted (1.98m) Blocked on Vertical Cylinders - Over Rear					
Working Radius (m)	6.65m Boom	11.6m Boom	16.55m Boom	21.5m Boom	6.65-21.5m Boom + Rooster Sheave
2.0	7.00				1.30
2.5	7.00	4.90	3.90		1.30
3.0	6.10	4.90	3.90	2.00	1.30
3.5	5.45	4.90	3.90	2.00	1.30
3.8	4.90	4.65	3.70	2.00	1.30
4.0	4.55	4.50	3.60	2.00	1.30
4.5	3.75	3.85	3.30	2.00	1.30
5.0	3.15	3.25	3.05	2.00	1.30
5.5	2.70	2.80	2.80	1.85	1.30
6.0	2.35	2.45	2.50	1.70	1.30
7.0		1.90	2.00	1.45	1.30
8.0		1.55	1.60	1.25	1.20
9.0		1.25	1.35	1.10	1.05
10.0		1.05	1.15	1.00	0.95
11.0		0.90	0.95	0.90	0.85
12.0			0.80	0.82	0.75
13.0			0.65	0.70	0.60
14.0			0.55	0.60	0.50
15.0			0.45	0.52	0.40
15.9			0.40	0.45	0.35
17.0				0.37	0.32
18.0				0.31	0.26
19.0				0.25	0.20
20.0				0.20	0.15
20.7				0.17	0.12
Standard Hook	for 7.0 ton				for 1.3 ton
Hook Weight	70 kg				20 kg
Parts of Line	6	4			1

(unit: metric ton)

- Lifting capacities will automatically change when the crane slews into a reduced capacity area

Rated Lifting Capacity Table (2)

Outriggers Intermediately Extended (3.0m) - Over Side					
• Outriggers Fully Extended (4.4m) - Over Front					
• Outriggers Intermediately Extended (3.0m) - Over Front					
• Outriggers Fully Retracted (1.98m) Blocked on Vertical Cylinders - Over Front					
Working Radius (m)	6.65m Boom	11.6m Boom	16.55m Boom	21.5m Boom	6.65-21.5m Boom + Rooster Sheave
2.0	7.00				1.30
2.5	7.00	4.90	3.50		1.30
3.0	5.20	4.90	3.50	2.00	1.30
3.5	3.80	3.90	3.50	2.00	1.30
3.8	3.20	3.30	3.05	2.00	1.30
4.0	2.90	3.00	2.80	2.00	1.30
4.5	2.20	2.40	2.40	2.00	1.30
5.0	1.80	1.95	1.95	1.80	1.30
5.5	1.40	1.60	1.60	1.65	1.30
6.0	1.10	1.35	1.35	1.40	1.05
7.0		0.95	0.95	1.00	0.90
8.0		0.70	0.70	0.75	0.65
9.0		0.50	0.50	0.55	0.45
10.0		0.35	0.35	0.40	0.30
11.0		0.25	0.25	0.30	0.20
Standard Hook	for 7.0 ton				for 1.3 ton
Hook Weight	70 kg				20 kg
Parts of Line	6	4			1
Critical Boom Angle	-		40°	54°	Depending on Boom Length

(unit: metric ton)

• Lifting capacities will automatically change when the crane slews into a reduced capacity area

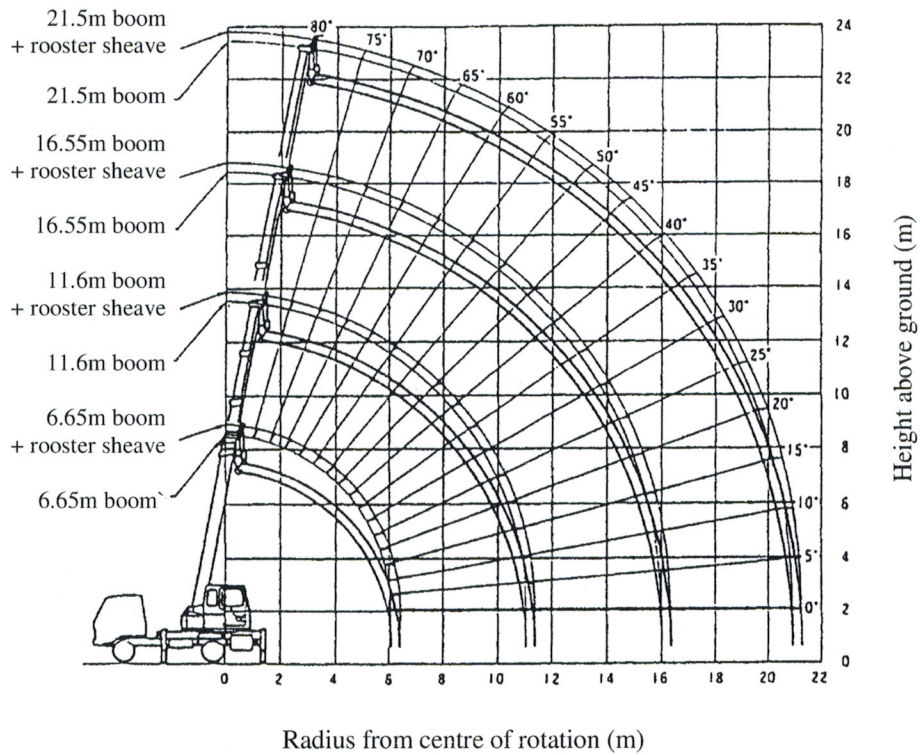
Rated Lifting Capacity Table (3)

Outriggers Fully Retracted (1.98m) Blocked on Vertical Cylinders - Over Side					
Working Radius (m)	6.65m Boom	11.6m Boom	16.55m Boom	21.5m Boom	6.65-21.5m Boom + Rooster Sheave
2.0	3.50				1.30
2.5	2.60	2.40	2.25		1.30
3.0	2.00	1.90	1.75	1.60	1.30
3.5	1.55	1.50	1.45	1.30	1.25
3.8	1.30	1.30	1.30	1.15	1.10
4.0	1.20	1.20	1.20	1.05	1.00
4.5	0.95	0.95	0.95	0.90	0.85
5.0	0.75	0.80	0.80	0.75	0.70
5.5	0.60	0.70	0.70	0.65	0.55
6.0	0.50	0.60	0.60	0.55	0.45
7.0		0.45	0.45	0.40	0.35
8.0		0.30	0.30	0.30	0.25
Standard Hook	for 7.0 ton				for 1.3 ton
Hook Weight	70 kg				20 kg
Parts Line	4				1
Critical Boom Angle	-	33°	54°	63°	Depending on Boom Length

(unit: metric ton)

Kato Super75R (NK75-v2) 7.0t Hydraulic Truck Crane

SPECIFICATION WORKING RANGE DIAGRAM



- Note:
1. Deflection of boom and jib excluded
 2. All outriggers fully extended with front jack