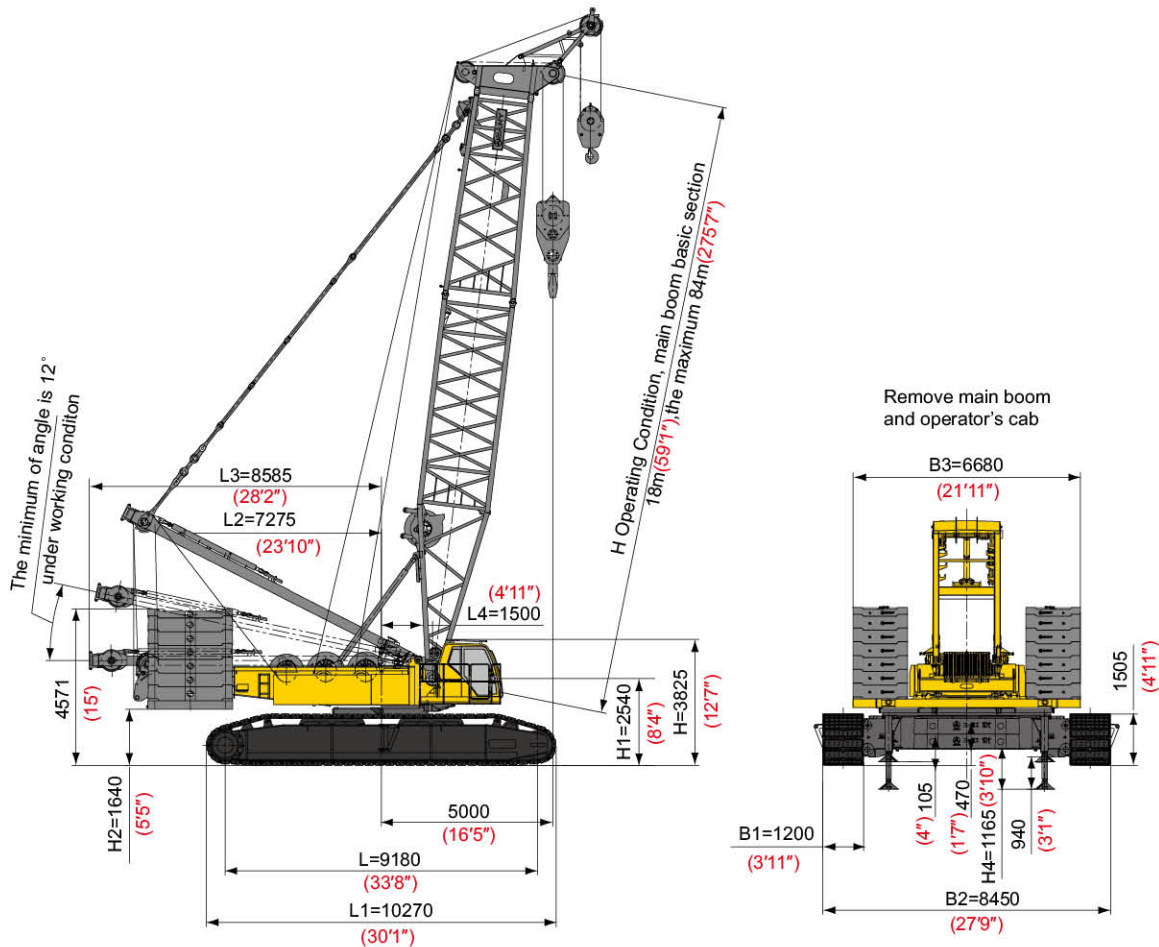


Outline Dimensions

- a. Width of upperworks (B3=6680(21'11"))
- b. Height of cab top above ground (H=3825(12'7"))
- c. Distance from slewing center to rear end of platform (L2=7275(23'10"))
- d. Max. distance from slewing center to rear end of platform during transport (L3=8585(28'2"))
- e. Horizontal mounting position of boom lower hinge point (L4=1500(4'11"))
- f. Vertical mounting position of boom lower hinge point (H1=2540(8'4"))
- g. Height of counterweight tray above the ground (H2=1640(5'5"))
- h. Length of crawler (L1=10270(33'8"))
- i. Width of crawler (B1=1200(3'11"))
- j. Min. height of the platform above the ground (H3=470(1'7"))
- k. Distance between the two crawlers (including width of crawler) (B2=8450(27'9"))
- l. Distance from guide roller center to drive roller center (L=9180(30'1"))
- m. Min. height of the platform above the ground with outrigger cylinder extended (H4=940(3'1"))

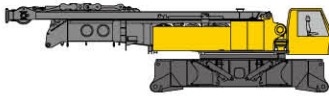


Outline Dimensions of SCC3200 Hydraulic Crawler Crane

Performance Data

Main Performance Data of SCC3200 Hydraulic Crawler Crane			
Performance Index		Unit	Data
H Operating Condition	Max. Lifting Load	t (Ust)	320 (353)
	Boom Length	m (ft)	18 ~ 84 (59' 1" ~ 275' 7")
	Boom Luffing Angle		30° ~ 85°
LJ Operating Condition	Max. Lifting Moment	t · m (lb · ft)	128 × 14 (282,200 × 45' 11")
	Full Extensional Boom + Full Extensional Luffing Jib	m (ft)	66.7+66 (218' 10" + 216' 6")
	Jib Luffing Angle		12° ~ 79°
Speed Data	Wire Speed of Main (Aux.) Hoisting Winch	m/min (fpm)	0 ~ 144 (0~472)
	Wire Speed of Main Luffing Winch	m/min (fpm)	(0 ~ 35) × 2 (0~115) × 2
	Wire Speed of Aux. Luffing Winch	m/min (fpm)	0~48 (0~157)
	Slewing Speed	rpm	0 ~ 1.4
	Traveling Speed	km/h (mph)	0 ~ 1.26 / 0 ~ 0.47 (0 ~ 0.78 / 0 ~ 0.29)
	Gradeability		>15%
Engine	Output Power	kw (hp)	298 (400)
	Rated Rotational Speed	rpm	2100
Transport Data	Max. Transport Weight of Single Part	kg (lb)	58,000 (127,870)
	Transport Dimensions (Length × Width × Height)	mm (ft)	12350 × 3400 × 3350 (40' 6" × 11' 2" × 10' 12")
	Average Ground Bearing Pressure	MPa (psi)	0.17 (24.67)

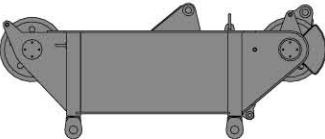
Transport Dimensions



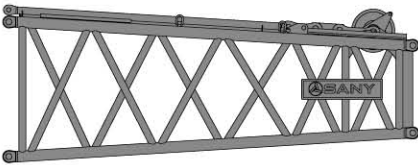
Basic Machine		×1
Length	12.35m	40' 6"
Width	3.4m	11' 2"
Height	3.35m	10' 12"
Weight	57000kg	125661lb



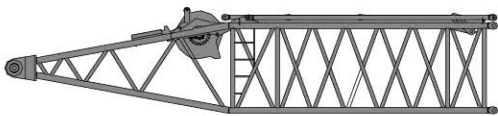
Crawler Assembly		×2
Length	10.3m	33' 10"
Width	1.5m	4' 11"
Height	1.5m	4' 11"
Weight	30000kg	66138lb



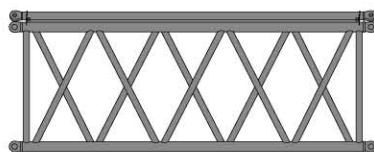
320t (352USt) Boom Tip		×1
Length	3.24m	10' 8"
Width	2.25m	7' 5"
Height	1.34m	4' 5"
Weight	3200kg	7055lb



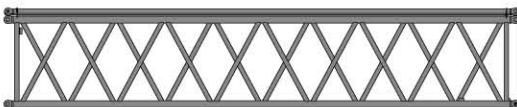
Boom Transition Insert		×1
Length	6.2m	20' 4"
Width	2.6m	8' 6"
Height	2.42m	7' 11"
Weight	3200kg	7055lb



Boom Base (Including Aux. Luffing Winch)		×1
Length	11.6m	38' 1"
Width	2.6m	8' 6"
Height	2.6m	8' 6"
Weight	11300kg	24912lb

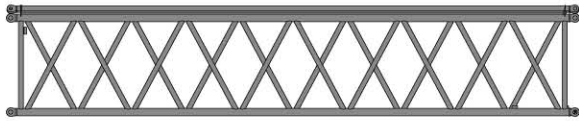


6m (19' 8") Boom Insert B		×1
Length	6.2m	20' 4"
Width	2.6m	8' 6"
Height	2.4m	7' 10"
Weight	2500kg	5511lb

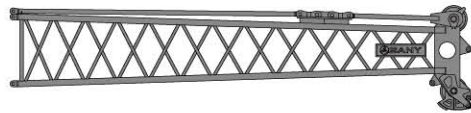


12m (39' 4") Boom Insert A		×4
Length	12.2m	40' 0"
Width	2.6m	8' 6"
Height	2.4m	7' 10"
Weight	4300kg	9480lb

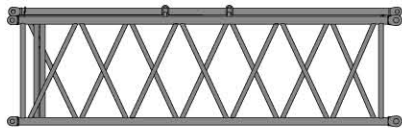
Transport Dimensions



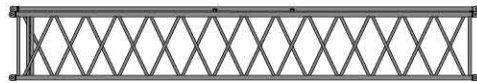
12m(39' 4") Boom Insert B			×1
Length	12.2m	40' 0"	
Width	2.6m	8' 6"	
Height	2.4m	7' 10"	
Weight	4300kg	9480lb	



Jib Tip			×1
Length	9.5m	31' 2"	
Width	2.22m	7' 3"	
Height	2.5m	8' 2"	
Weight	3500kg	7716lb	



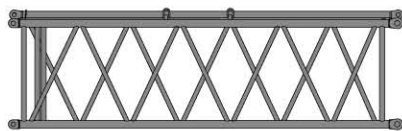
6m(19' 8") Jib Insert			×1
Length	6.2m	20' 4"	
Width	2.22m	7' 3"	
Height	2.0m	6' 7"	
Weight	1500kg	3307lb	



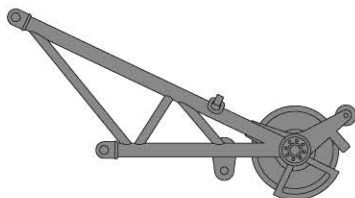
12m(39' 4") Jib Insert A			×3
Length	12.2m	40' 0"	
Width	2.22m	7' 3"	
Height	2.0m	6' 7"	
Weight	2600kg	5732lb	



Tower Group (including Jib Base, Jib Strut, Main Strut, and Connecting Head)			×1
Length	18m	59' 1"	
Width	2.3m	7' 7"	
Height	3.3m	10' 10"	
Weight	15200kg	33510lb	

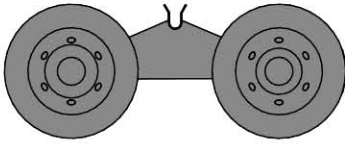


6m(19' 8") Jib Insert			×1
Length	6.2m	20' 4"	
Width	2.22m	7' 3"	
Height	2.0m	6' 7"	
Weight	1500kg	3307lb	



Extension Jib			×1
Length	2.4m	7' 10"	
Width	1.1m	3' 7"	
Height	1.8m	5' 11"	
Weight	600kg	1323lb	

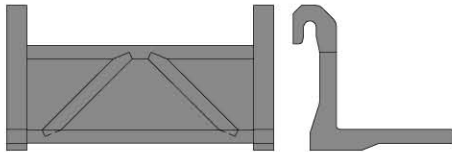
Transport Dimensions



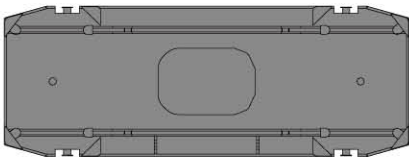
Bogie Truck		×1
Length	2.6m	8' 6"
Width	1.6m	5' 3"
Height	1.0m	3' 3"
Weight	900kg	1984lb



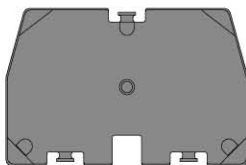
Central Ballast Block		×4
Length	3.1m	10' 2"
Width	1.1m	3' 7"
Height	0.51m	1' 8"
Weight	10000kg	22046lb



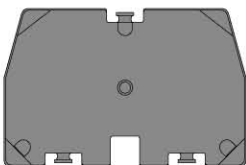
Hook of Central Ballast Frame		×2
Length	1.59m	5' 3"
Width	0.87m	2' 10"
Height	0.96m	3' 2"
Weight	500kg	1102lb



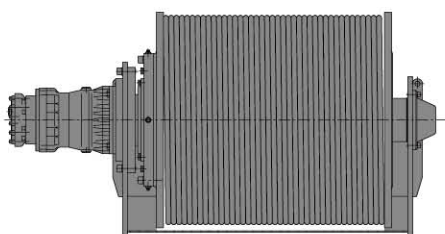
Counterweight Tray		×1
Length	6.7m	21' 12"
Width	2.5m	8' 2"
Height	0.43m	1' 5"
Weight	20000kg	44092lb



Counterweight Block		×12
Length	2.5m	8' 2"
Width	1.6m	5' 3"
Height	0.46m	1' 6"
Weight	10000kg	22046lb

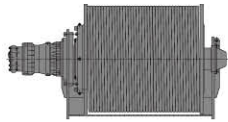


Counterweight Block		×2
Length	2.5m	8' 2"
Width	1.6m	5' 3"
Height	0.26m	0' 10"
Weight	5000kg	11023lb

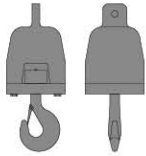


Main Hoisting Winch		×1
Length	2.2m	7' 3"
Width	1.13m	3' 8"
Height	1.15m	3' 9"
Weight	5200kg	11464lb

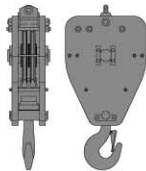
Transport Dimensions



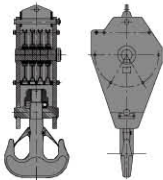
Aux. Hoisting Winch		× 1
Length	2.2m	7' 3"
Width	1.13m	3' 8"
Height	1.15m	3' 9"
Weight	4400kg	9700lb



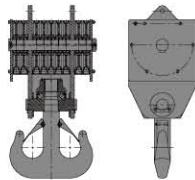
15t (16.5USt) Hook Block		× 1
Length	0.46m	1' 6"
Width	0.46m	1' 6"
Height	1.2m	3' 11"
Weight	800kg	1764lb



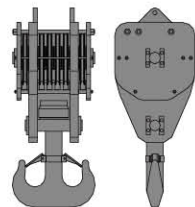
50t (55USt) Hook Block		× 1
Length	0.96m	3' 2"
Width	0.6m	1' 12"
Height	2.0m	6' 7"
Weight	1700kg	3748lb



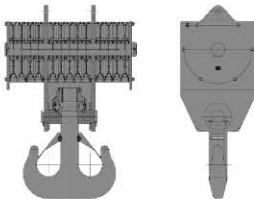
100t (110USt) Hook Block		× 1
Length	0.96m	3' 2"
Width	0.81m	2' 8"
Height	2.23m	7' 4"
Weight	3400kg	7496lb



150t (165USt) Hook Block		× 1
Length	1.0m	3' 3"
Width	0.96m	3' 2"
Height	2.4m	7' 10"
Weight	4600kg	10141lb



200t (220USt) Hook Block		× 1
Length	1.14m	3' 9"
Width	0.96m	3' 2"
Height	2.6m	8' 6"
Weight	4900kg	10802lb

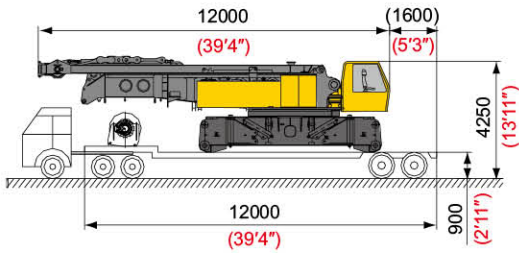


320t (352USt) Hook Block		× 1
Length	1.65m	5' 5"
Width	0.96m	3' 2"
Height	3.0m	9' 10"
Weight	7500kg	16534lb

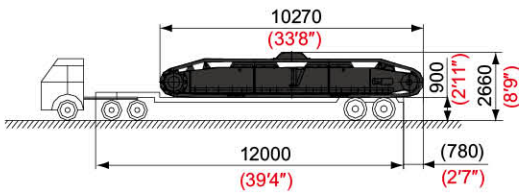
Notes:

- 1.The transport dimensions of main parts are not drawn to proportion. The dimensions in the sketches are design values excluding packages.
- 2.The weight is design value and there may be difference caused during manufacturing.

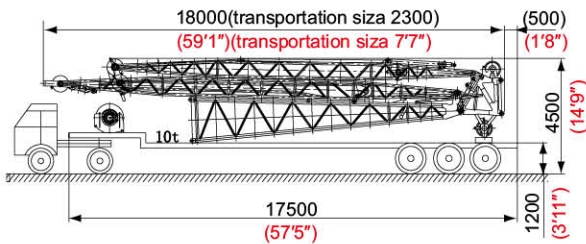
Reference Transport Scheme



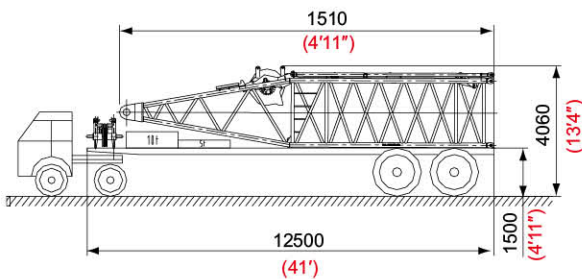
Flatbed lorry	length: 12 m(39'4"); width: 3.2m(10'6")
	height: 0.9m(2'11");
	Rated Load: 60t(132,300lb)
Transport Units	Basic machine and main hoisting winch
Transport weight	58t(127,900lb)
Number	1



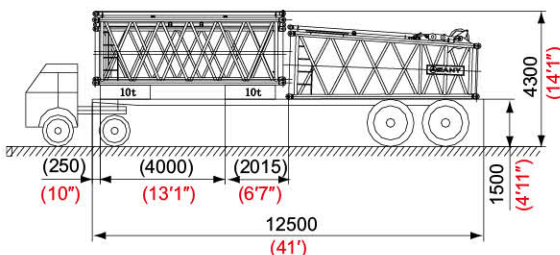
Flatbed lorry	length: 12 m(39'4"); width: 3.2m(10'6");
	height: 0.9m(2'11");
	Rated Load: 60t(132,300lb)
Transport Units	Two crawler assemblies
Transport weight	60t(132,300lb)
Number	1



Flatbed lorry	length: 17.5m(57'5"); width: 3m(9'10")
	height: 1.2m(3'11");
	Rated Load: 30t (66,140lb)
Transport Units	Group of Jib base, jib strut, main strut, and connecting head, central ballast block (1x10t(22,100lb)), aux. hoisting winch
Transport weight	29t(64,000lb)
Number	1

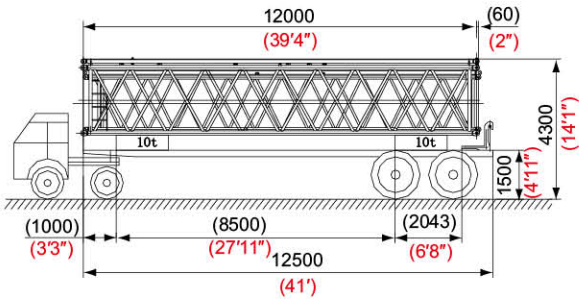


Flatbed lorry	length: 12.5m(41'); width: 3m(9'10");
	height: 1.5m(4'11");
	Rated Load: 30t(66,140lb)
Transport Units	Boom base (including aux. luffing winch), central ballast block (1x10t(22,100lb)), counterweight block (1x5t(11,100lb)), extension jib
Transport weight	26t(57,320lb)
Number	1

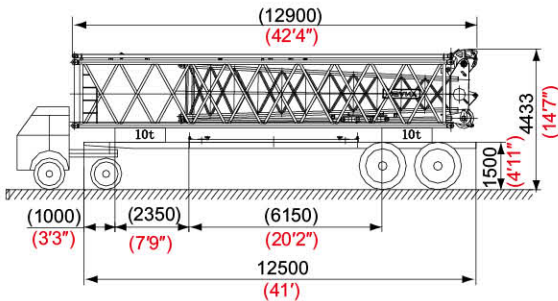


Flatbed lorry	length: 12.5m(41'); width: 3m(9'10"); height: 1.5m(4'11");
	Rated Load: 30t(66,140lb)
Transport Units	6m(19'8") boom insert, 6m(19'8") jib inset, boom transition insert, counterweight block (2x10t(22,100lb))
Transport weight	27t(59,530lb)
Number	1

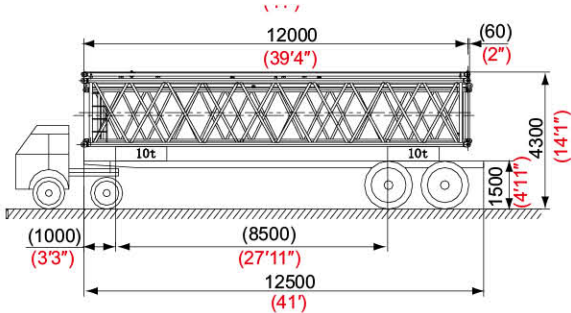
Reference Transport Scheme



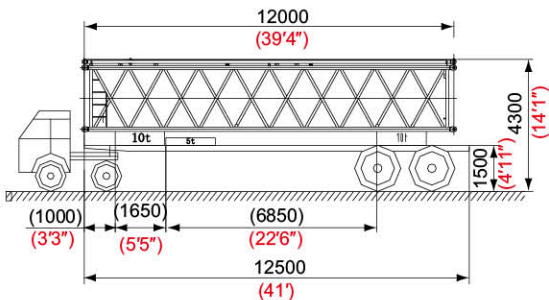
Flatbed lorry	length: 12.5m(41'); width: 3m(9'10"); height: 1.5m(4'11"); Rated Load: 30t(66,140lb)
Transport Units	12m(39'4") boom insert A, 12m(39'4") jib insert, counterweight blocks (2×10t(22,100lb)), and hook of central ballast frame
Transport weight	27t(59,530lb)
Number	1



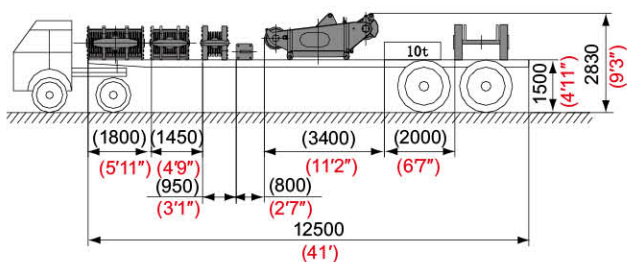
Flatbed lorry	length: 12.5m(41'); width: 3m(9'10"); height: 1.5m(4'11"); Rated Load: 30t(66,140lb)
Transport Units	12m (39'4") boom insert A, jib tip, and counterweight blocks (2×10t(22,100lb))
Transport weight	28t(61,730lb)
Number	1



Flatbed lorry	length: 12.5m(41'); width: 3m(9'10"); height: 1.5m(4'11"); Rated Load: 30t(66,140lb)
Transport Units	12m (39'4") boom insert A, and counterweight blocks (2×10t(22,100lb))
Transport weight	27t(59,530lb)
Number	2

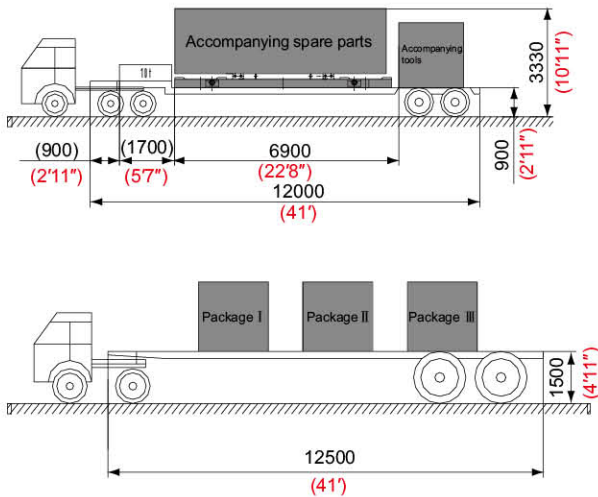


Flatbed lorry	length: 12.5m(41'); width: 3m(9'10"); height: 1.5m(4'11"); Rated Load: 30t(66,140lb)
Transport Units	12m (39'4") boom insert B, counterweight blocks (2×10t(22,100lb)), counterweight (1×5t(11,1000lb))
Transport weight	29t(63,940lb)
Number	1



Flatbed lorry	length: 12.5m(41'); width: 3m(9'10"); height: 1.5m(4'11"); Rated Load: 30t(66,140lb)
Transport Units	320t(353UST) hook block, 200t(220UST) hook block, 100t(110UST) hook block, 15t(17UST) hook block, boom head, central ballast block (1×10t(22,100lb))
Transport weight	29t(63,940lb)
Number	1

Reference Transport Scheme



Flatbed lorry	length: 12m(39'4"); width: 3.2m(10'6");
	height: 0.9m(2'11");
	Rated Load: 60t(132,300lb)
Transport Units	Counterweight tray, central ballast
	block(1×10t (22,100lb)), attachment
	parts, attachment tools
Transport weight	58t(127,900lb)
Number	1

Flatbed lorry	length: 12.5m(41'); width: 3m(9'10"); height:
	1.5m(4'11"); Rated Load: 30t(66,140lb)
Transport Units	Package case I, II, and III.
Transport weight	15t(33,100lb)
Number	1

Remarks:

- 1.All loading heights exclude the height of shim blocks. Dimensions inside black brackets are only for reference.
- 2.All the parts must be secured to prevent slipping on the flatbed lorry in case of sharp turn or emergency brake during transportation.
- 3.During transportation (including loading and unloading), the parts must be kept from damage and the surface paint complete.