



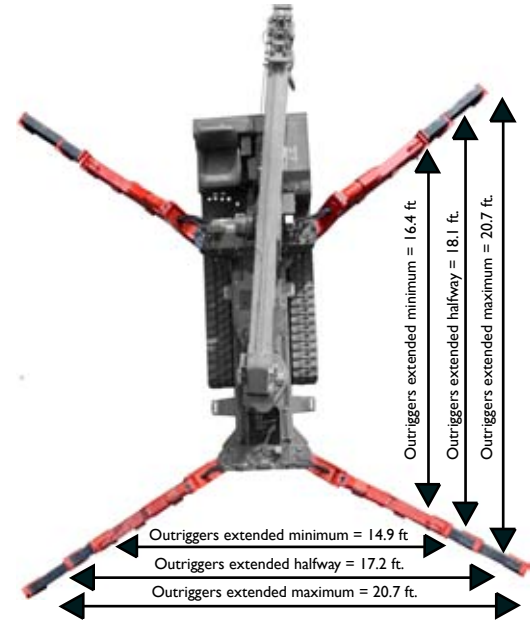
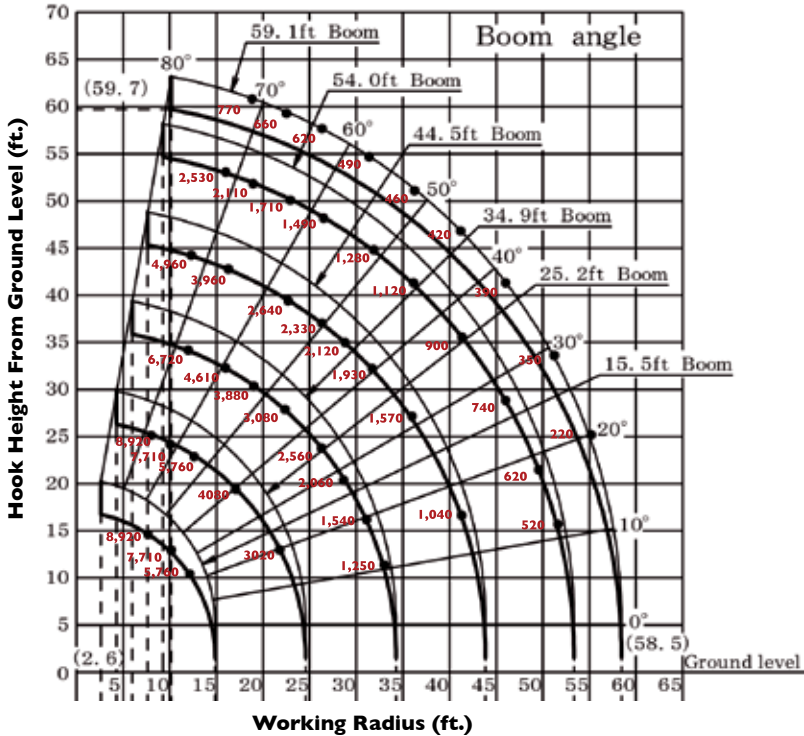
ASME/B-30.5 Compliant

DESIGNED TO GO WHERE OTHER CRANES CAN'T

Engineered and manufactured by the Japanese crane industry leader FURUKAWA UNIC Corp., the SPYDERCRANE offers versatility, maneuverability and lifting capacity in a compact design which enables you to quickly, safely and easily meet all of your restricted and confined-area lifting requirements. SPYDERCRANES are distributed in North America by SPYDERCRANE Sales, LLC. of Arizona. Each unit is backed by our 20-plus years of industry and application experience, complete inventory of genuine spare parts and accessories, and superior local service support.



WORKING RADIUS



LOAD CHART Lifting capacity varies depending on outrigger configuration and boom length and angle.

| FIRST STAGE EXTENDED | | | | | | | | | | | | | | |
|---|-------|-------|-------|-------|-------|-------|-------|-------|-------|-------|-------|------|------|------|
| Working Radius (ft.) | 8.0 | 10.0 | 11.0 | 13.0 | 14.0 | 16.0 | 18.0 | 19.0 | 23.0 | 24.6 | | | | |
| Outriggers Maximum (lbs.) | 8,920 | 7,710 | 7,010 | 5,760 | 5,350 | 4,610 | 4,080 | 3,830 | 3,080 | 2,970 | | | | |
| Outriggers Halfway (lbs.) | 8,920 | 7,710 | 7,010 | 5,760 | 5,300 | 4,350 | 3,710 | 3,400 | 2,340 | 2,000 | | | | |
| Outriggers Minimum (lbs.) | 8,920 | 7,710 | 7,010 | 5,760 | 5,160 | 3,960 | 3,020 | 2,660 | 1,760 | 1,470 | | | | |
| ALL BOOMS RETRACTED AND SECOND STAGE EXTENDED | | | | | | | | | | | | | | |
| Working Radius (ft.) | 11.0 | 13.0 | 16.0 | 19.0 | 23.0 | 26.0 | 29.0 | 32.0 | 34.3 | | | | | |
| Outriggers Maximum (lbs.) | 6,720 | 5,760 | 4,610 | 3,880 | 3,080 | 2,560 | 2,060 | 1,540 | 1,250 | | | | | |
| Outriggers Halfway (lbs.) | 6,720 | 5,760 | 4,350 | 3,350 | 2,540 | 1,980 | 1,580 | 1,250 | 1,060 | | | | | |
| Outriggers Minimum (lbs.) | 6,720 | 5,760 | 3,910 | 2,810 | 1,960 | 1,490 | 1,170 | 930 | 770 | | | | | |
| THIRD STAGE EXTENDED | | | | | | | | | | | | | | |
| Working Radius (ft.) | 13.0 | 14.0 | 16.0 | 19.0 | 23.0 | 26.0 | 29.0 | 32.0 | 36.0 | 39.0 | 42.0 | 43.9 | | |
| Outriggers Maximum (lbs.) | 4,960 | 4,510 | 3,960 | 3,230 | 2,640 | 2,330 | 2,120 | 1,930 | 1,570 | 1,240 | 1,040 | 940 | | |
| Outriggers Halfway (lbs.) | 4,960 | 4,350 | 3,750 | 3,100 | 2,425 | 2,000 | 1,700 | 1,400 | 1,100 | 920 | 780 | 690 | | |
| Outriggers Minimum (lbs.) | 4,960 | 4,350 | 3,750 | 2,810 | 1,870 | 1,540 | 1,290 | 1,030 | 810 | 670 | 550 | 480 | | |
| FOURTH STAGE EXTENDED | | | | | | | | | | | | | | |
| Working Radius (ft.) | 16.0 | 18.0 | 19.0 | 23.0 | 26.0 | 29.0 | 32.0 | 36.0 | 39.0 | 42.0 | 46.0 | 49.0 | 52.0 | 53.4 |
| Outriggers Maximum (lbs.) | 2,530 | 2,210 | 2,110 | 1,710 | 1,490 | 1,380 | 1,280 | 1,120 | 1,020 | 900 | 740 | 620 | 520 | 480 |
| Outriggers Halfway (lbs.) | 2,530 | 2,210 | 2,110 | 1,650 | 1,440 | 1,280 | 1,140 | 1,000 | 890 | 790 | 660 | 540 | 450 | 420 |
| Outriggers Minimum (lbs.) | 2,530 | 2,210 | 2,060 | 1,650 | 1,220 | 1,050 | 980 | 860 | 760 | 640 | 500 | 420 | 340 | 330 |
| FIFTH STAGE EXTENDED | | | | | | | | | | | | | | |
| Working Radius (ft.) | 19.0 | 23.0 | 26.0 | 29.0 | 32.0 | 36.0 | 39.0 | 42.0 | 46.0 | 49.0 | 52.0 | 55.0 | 58.5 | |
| Outriggers Maximum (lbs.) | 770 | 660 | 620 | 560 | 490 | 460 | 440 | 420 | 390 | 370 | 350 | 300 | 220 | |
| Outriggers Halfway (lbs.) | 770 | 660 | 620 | 560 | 490 | 460 | 440 | 420 | 390 | 370 | 350 | 300 | 220 | |
| Outriggers Minimum (lbs.) | 770 | 660 | 620 | 560 | 490 | 460 | 440 | 420 | 390 | 370 | 350 | 300 | 220 | |

URW547 MINI-CRAWLER CRANE

| | | URW547C2URS | URW547C2UMRS |
|--------------------------------------|---|--|---|
| Crane capacity | Capacity: | 8,920 lbs. @ 8.0 ft. with 4-part line | |
| Max working radius | Maximum: | 2.6 - 58.5 ft. | |
| Max lifting height | Approximate: | 59.7 ft. | |
| Turning radius (ft.) | Minimum: | TURNS WITHIN IT'S DIMENSIONS | |
| Dimensions (ft.) | Folded: (l x w x h) | 16.2ft. X 4.5ft. X 6.5ft. | |
| Weight | Unladen: | 11,070 lbs | |
| Outrigger point loading | Maximum: | Specific point landing available upon request | |
| Winch speed | Approximate: | Single line speed: 183.7 ft./minute at 5th layer Hook Speed: 45.9 ft./min at 5th layer with 4-part line | Diesel Electric Single line speed: 131.2 ft./minute at 4th layer Hook Speed: 32.8 ft./min at 4th layer with 4-part line |
| | | | |
| Telescopic system | Boom Length: | 13.1 to 59.1 ft. | |
| | Hydraulic Telescopic with holding valves: | 46.0 ft./35 sec | Diesel Electric 38.67 ft./35 sec 38.67 ft./48 sec |
| | Boom type: | 7- section hydraulicity telescoping boom, hexagonal box construction | |
| Boom lift speed | Hydraulic with holding valves | 0° to 80°/18 sec | Diesel Electric 0° to 80° /18 sec 0° to 80° /25 sec |
| | | | |
| Swing rotation | Worm Drive | 360 degrees continuous | |
| Traction System | Travel Speed: | Two Speed | Low: 1.86 mph High: 3.96 mph |
| | Gradability: | 23° | |
| | Track ground pressure: | 6.82 psi | |
| Engine / Motor | Manufacturer: | Mitsubishi | Mitsubishi |
| | Fuel Capacity: | 10.5 gal | 10.51 gal N/A |
| | Maximum output: | 21.1 HP | Diesel Electric 21.1 HP 10 HP |
| | Starting method: | Electric start as standard | |
| | Type: | Diesel | Diesel & Electric |
| Standard and safety equipment | Full-function radio remote, centrally loacted infitely variable controls, onboard self-diagnostic computer system, hexagnol boom, anti-two block system, automatic hook stow system, hook safety latch, over-winding prevention device and alarm, working area limitation minimum wire rope automatic stop, hydraulic circuit pressure relief valve and bubble-stlye level for outrigger leveling, Rated Capacity Indicator, (L.M.I) Interlock Monitoring Outrigger System. | | |

Product specifications are subject to change without notice. No specific training or license is required to operate the SPYDERCRANE in most areas, but operators are responsible for knowing and meeting all local safety requirements and regulations.