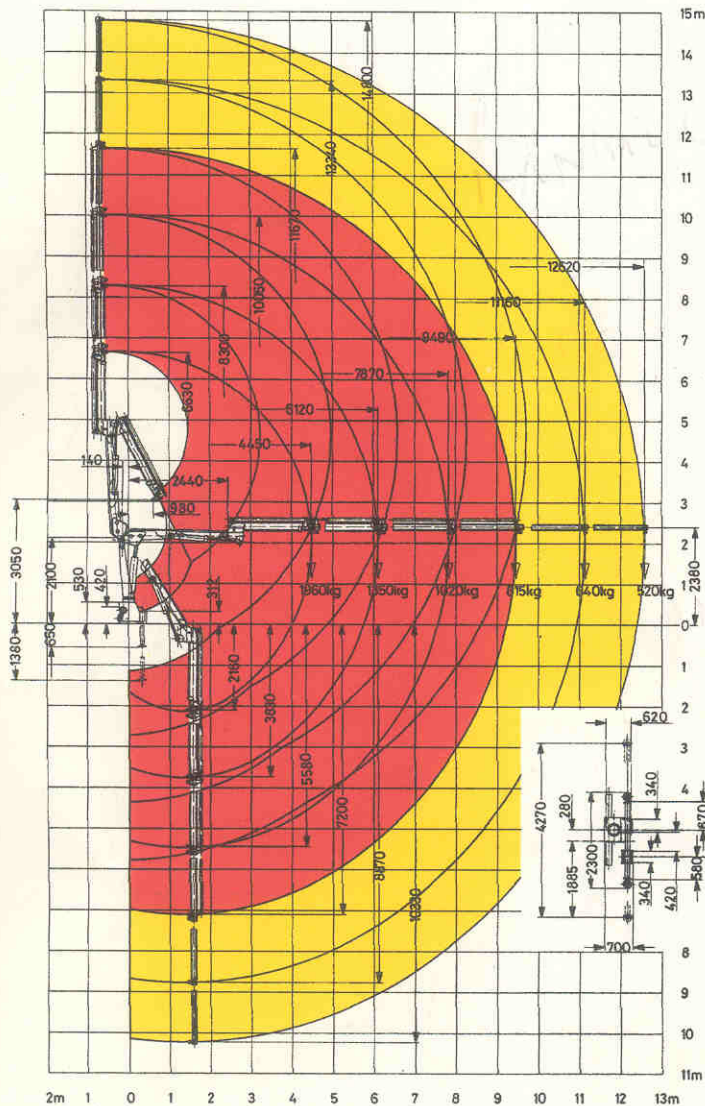


The technical data **Euro I**



Crane height in transport position	2.100 mm / 6' 11"
Total width in transport position	2.300 mm / 7' 7"
Installation width	700 mm / 2' 4"
Reach main boom	2.440 mm / 8' 1"
Reach main boom / jib	4.450 mm / 14' 7"
Reach with single extension (standard)	6.120 mm / 20' 1"
Reach with double extension	7.870 mm / 25' 10"
Reach with triple extension	9.490 mm / 31' 2"
Reach with additional 2 extensions	12.620 mm / 41' 5"
Reach with longer main boom (1500 mm / 5') max.	14.120 mm / 46' 4"
Lifting height over vehicle chassis frame:	
without extension	6.630 mm / 21' 9"
with single extension	8.300 mm / 27' 3"
with double extension	10.050 mm / 32' 11"
with triple extension	11.670 mm / 38' 3"
near column	3.050 mm / 10'
Lifting moment at 4.450 mm / 14' 7" reach	8.722 daNm / 8,7 mt
Lifting capacity at 2.440 mm / 8' 1" reach	3.400 kg / 7.496 lbs
Lifting capacity at 4.450 mm / 14' 7" reach	1.960 kg / 4.321 lbs
Lifting capacity at 6.120 mm / 20' 1" reach	1.350 kg / 2.976 lbs
Lifting capacity at 7.870 mm / 25' 10" reach	1.020 kg / 2.249 lbs
Lifting capacity at 9.490 mm / 31' 2" reach	815 kg / 1.797 lbs
Lifting capacity at 11.160 mm / 36' 7" reach	640 kg / 1.411 lbs
Lifting capacity at 12.620 mm / 41' 5" reach	520 kg / 1.146 lbs
Slewing range	390 degree
Slewing moment	1.800 daNm
Slewing time per rotation approx.	10 sec.
Lifting speed max. approx.	0,6m / 2' per sec.
Working pressure	220 bar
Recommended pump flow rate min.	35 l / 8 gallon per min.
Stabilizer width single extendable (standard)	4.270 mm / 14' 1"
Stabilizer width double extendable	5.270 mm / 17' 4"
Stroke of stabilizer cylinder	730 mm / 2' 5"
Hydr. Stabilizer legs adjustable from	600-650 mm / 2'-2' 2"
Total crane weight incl. stabilizer (standard)	1.252 kg / 2.760 lbs
with double hydr. boom extension	1.340 kg / 2.954 lbs
with triple hydr. boom extension	1.395 kg / 3.075 lbs

- Subject to techn. modifications -

Working range Euro I

