

REVISIONS								
LTR	DESCRIPTION	DATE	BY	CHK	ENR	APPD	APPD	APPD
A	ALTERNATE 30T TROLLEY OPTION	9-6-91	JLF	CH	KA			
B	ADD CRANE ELEC. LOAD REFERENCE TO ORIENTATION MAXIMUM STATIC WHEEL LOAD 127,000	11-1-91	EPR	CH	KA			
C	GENERAL REVISION CUSTOMER COMMENTS PLUS AS DESIGNED	2-7-92	EPR	CH	KA			

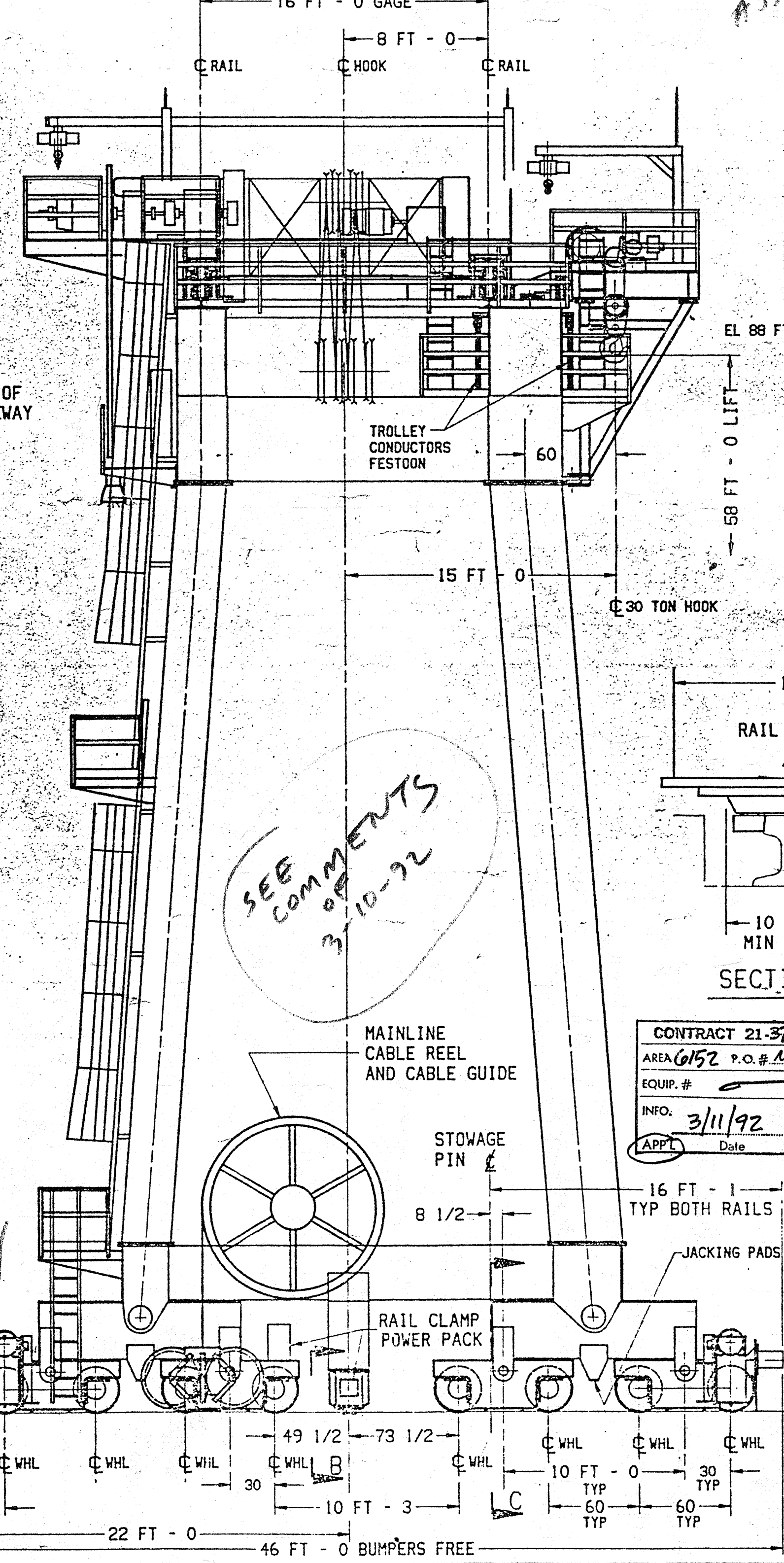
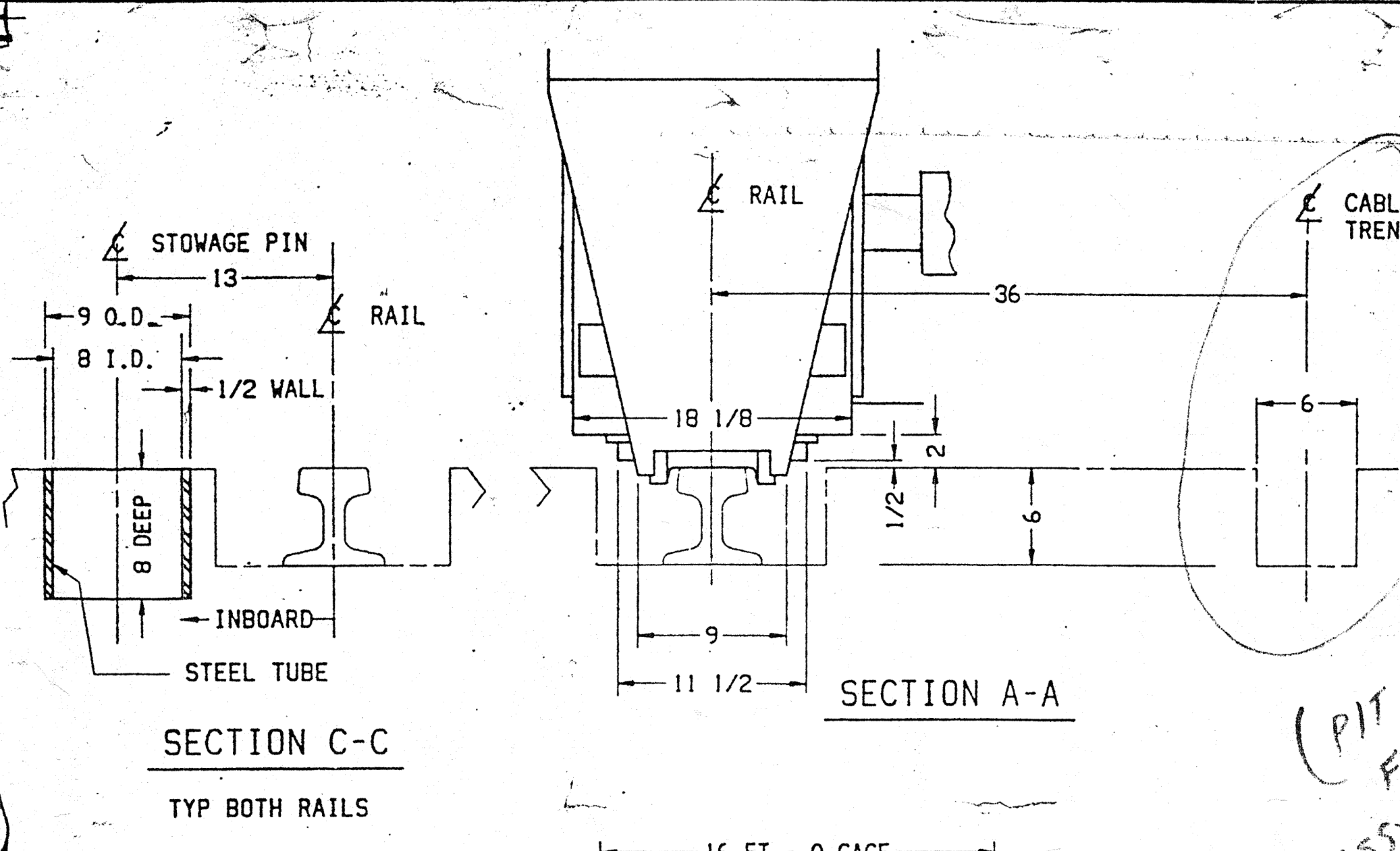
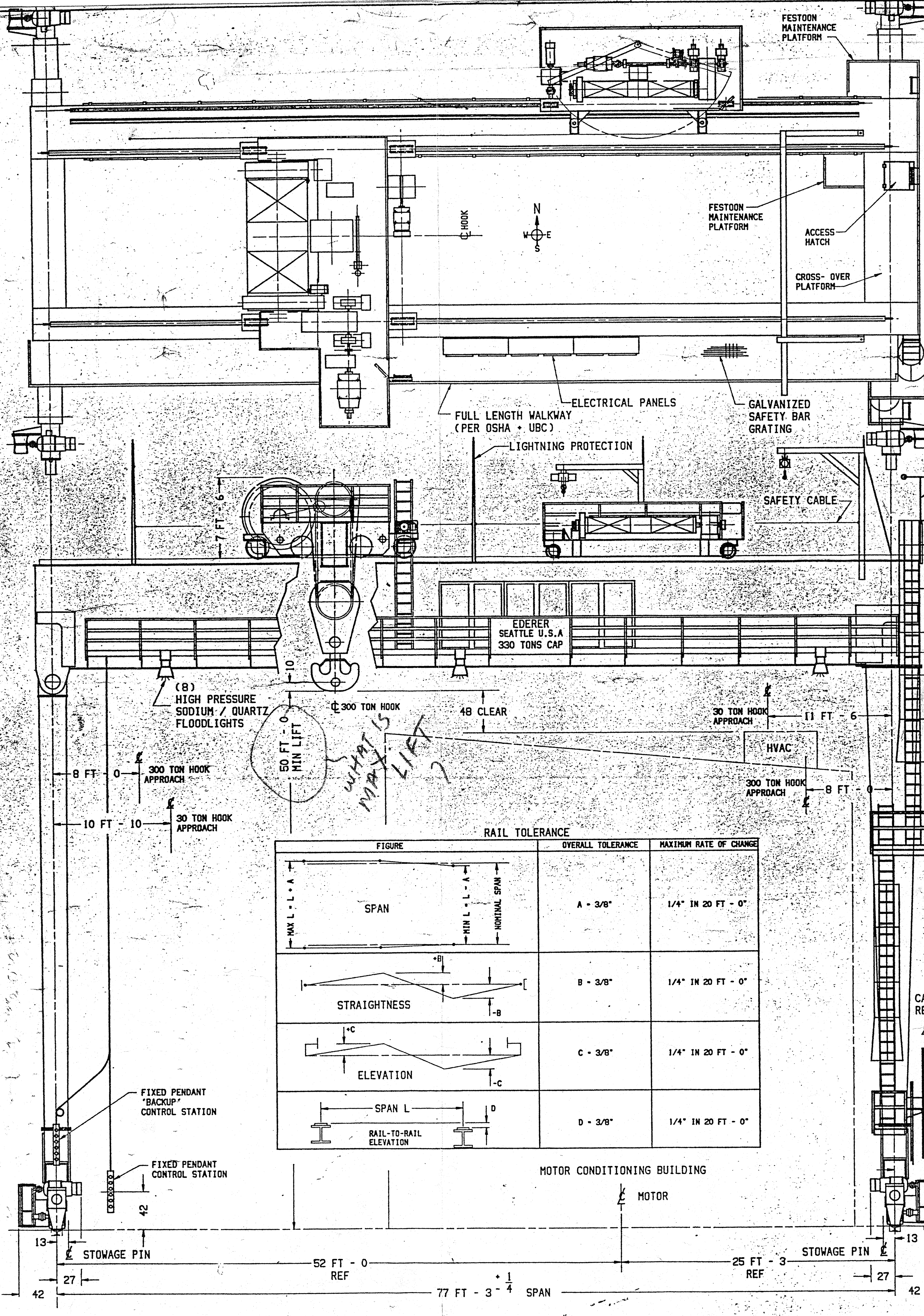


FIGURE	RAIL TOLERANCE	OVERALL TOLERANCE	MAXIMUM RATE OF CHANGE
	SPAN	A - 3/8"	1/4" IN 20 FT - 0"
	STRAIGHTNESS	B - 3/8"	1/4" IN 20 FT - 0"
	ELEVATION	C - 3/8"	1/4" IN 20 FT - 0"
	RAIL-TO-RAIL ELEVATION	D - 3/8"	1/4" IN 20 FT - 0"

CRANE WEIGHT (ESTIMATED):

'A' GIRDER ASSEMBLY	74,000 LBS
'B' GIRDER ASSEMBLY	87,000 LBS
PINNED END FRAME	52,500 LBS
FIXED END FRAME	60,000 LBS
TRUCK + EQUALIZER	98,000 LBS
MISCELLANEOUS WEIGHT	16,000 LBS
GANTRY ASSEMBLY (SUB TOTAL)	397,500 LBS
MAIN HOIST TROLLEY	170,000 LBS
AUXILIARY HOIST TROLLEY	20,000 LBS
TOTAL CRANE WEIGHT	577,500 LBS

965,000

CRANE DATA:

POWER	480 / 3 / 60 (4 WIRE)
CRANE ELECTRICAL LOAD	300 AMPS **
BRIDGE WHEEL	(16) 30" DIA
MAXIMUM STATIC WHEEL LOAD	134,000 LBS
RUNWAY RAIL	171 LBS/YD
SERVICE	OUTDOOR
DUTY	C.M.A.A. CLASS D
CONTROL	FIXED PENDANT PUSHBUTTON
BUMPER	KASTALON *CE-20-K11
MAX BUMPER FORCE	73,000 LBS
MAX STOWAGE PIN REACTION	66,000 LBS

\*\* BASED ON 100% DRAW OF HOIST AND LIGHTING PANEL PLUS 50% OF ALL OTHER MOTORS SIMULTANEOUSLY

CRANE CAPACITY:

BRIDGE	330 TONS
MAIN HOIST	300 TONS
AUXILIARY HOIST	30 TONS

MAXIMUM SPEEDS:

BRIDGE	150 FPM
MAIN TROLLEY	60 FPM
AUXILIARY TROLLEY	60 FPM
MAIN HOIST	5 FPM
AUXILIARY HOIST	13 FPM

REFERENCE INFORMATION:

N.A.S.A. P.O. NUMBER	NAS13-488
SPECIFICATION NUMBER	1445 / 04
EDFRER SERIAL NUMBER	F-2319
EQUIPMENT NUMBER	75-4-1000-503

SCALE 3/16" = 1 FT - 0"

DRAWN: RWHING 8-20-91

CHECK: L.H.

ENG: L.H.

APPD: [Signature]

APPD: [Signature]

APPD: [Signature]

CST ITEM NO. 0

FIRST USED ON F-2319

**EDERER** INCORPORATED  
WASHINGTON STAR CRANES

CLEARANCE DRAWING  
300 / 30 TON GANTRY CRANE  
N.A.S.A. STERNS SPACE CENTER MS.

PA-1826  
DWG. NO.

C REV

CONTRACT 21-3721B  
AREA 6152 P.O. # NAS13-488  
EQUIP. #  
INFO: 3/11/92 PREL  
APPL Date CERT

RECEIVED  
SSC/CRAN  
Disc Control