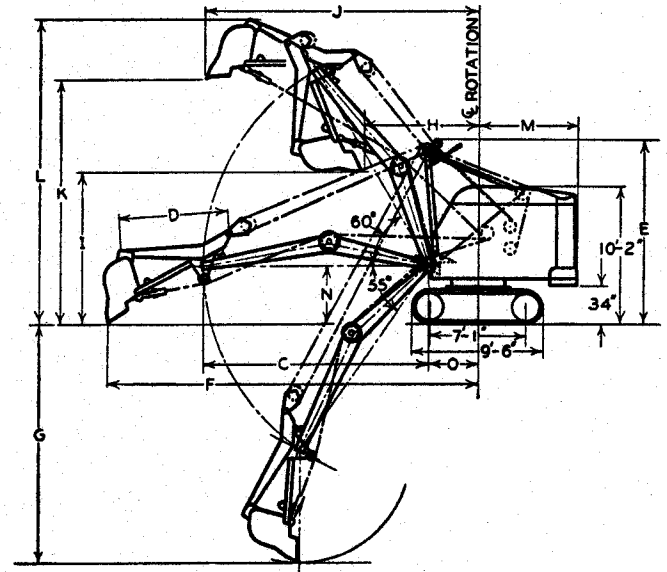
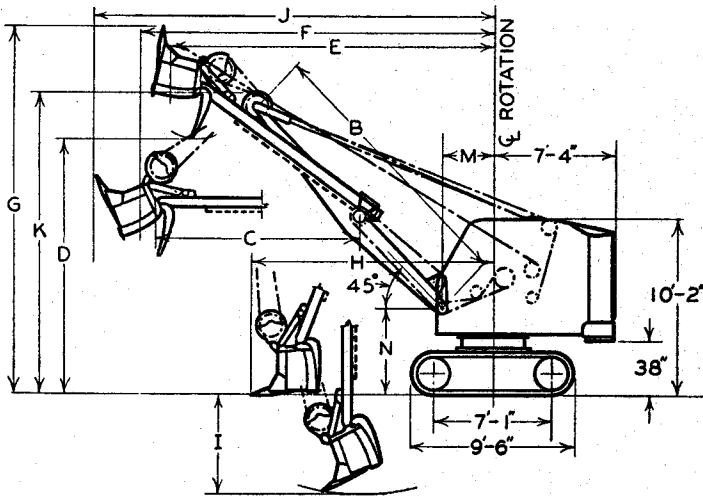


# LINK-BELT SPEEDER

# Clearances-Specifications-Working Ranges LS-51 Shovel and Trench Hoe



## SHOVEL WORKING RANGES

BOOM ANGLE		60°	55°	50°	45°	40°
Dipper Capacity Cubic Yards		½	½	½	½	½
Length of Boom	B	16'	16'	16'	16'	16'
Length of Dipper Stick	C	13'	13'	13'	13'	13'
Maximum Dumping Height	D	17'10"	16'10"	15'8"	14'7"	13'3"
Dumping Radius at Maximum Height	E	15'10"	17'2"	18'4"	19'4"	20'4"
Maximum Dumping Radius	F	19'9"	20'4"	20'10"	21'3"	21'9"
Maximum Cutting Height	G	24'8"	23'6"	22'4"	21'0"	19'6"
Maximum Clean-Up at Ground Level	H	13'5"	13'10"	14'2"	14'6"	14'9"
Maximum Digging Depth Below Ground Level	I	4'8"	5'0"	5'5"	5'11"	6'3"
Maximum Cutting Radius	J	22'7"	23'1"	23'7"	24'1"	24'6"
Boom Head Clearance Height	K	19'8"	18'11"	18'2"	17'2"	16'2"
Radius of Boom Hinge Pin	M	37"	37"	37"	37"	37"
Height of Boom Hinge Pin	N	60"	60"	60"	60"	60"

## TRENCH HOE WORKING RANGES

Dipper Cutting Width (Standard)		36"
Length of Boom	C	16'6"
Length of Dipper Arm	D	8'0"
Height of Hoe Gantry	E	13'6"
Maximum Reach	F	27'1"
Maximum Digging Depth*	G	17'5"
Radius Beginning of Dump	H	8'4"
Ground Clearance Beginning Dump	I	11'2"
Clearance Radius End of Dump	J	20'0"
Ground Clearance End of Dump	K	18'0"
Over-All Height End of Dump	L	22'5"
Rear End Radius	M	7'4"
Height of Boom Hinge Pin	N	4'3"
Radius Boom Hinge Pin	O	3'7"

\*Dimension "G" shows Maximum Digging Depth with 55° boom, conforming to Paragraph 6.41 of U.S. Dept. of Commerce Commercial Standard CS90-49. The maximum "effective" digging depth will vary according to character of excavation and soil.

## BRIEF SPECIFICATIONS

### POWER UNIT

Waukesha 6BZ standard gasoline engine, 6 cylinder. 55 H.P. at 1510 R.P.M. full load speed.

Caterpillar D-311 and D-315, International UD-9A, General Motors 2030C diesel engines also available.

### SHOVEL

Working weight, gasoline, 20" tracks.....28,000 lbs.  
Hoist speed, single line.....134 f.p.m.  
Crowd speed.....101 f.p.m.  
Retract speed.....146 f.p.m.  
Swing speed.....4.9 r.p.m.

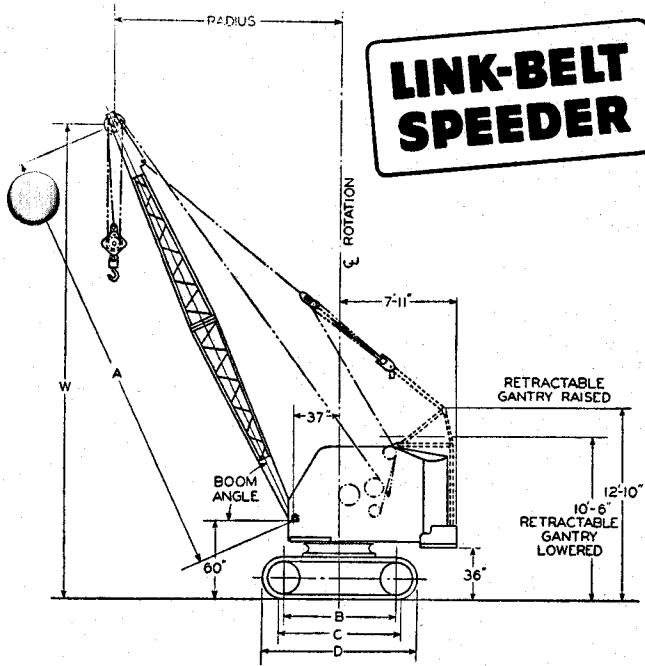
### TRENCH HOE

Working weight, gasoline, 20" tracks.....28,800 lbs.  
Inhaul speed, 2 part line.....67 f.p.m.  
Hoist speed, 2 part line.....81 f.p.m.  
Swing speed.....4.9 r.p.m.

## GENERAL INFORMATION ONLY

# LINK-BELT SPEEDER

# Clearances-Specifications-Working Ranges LS-51 Crane



GENERAL DIMENSIONS		
Basic boom length	A	30'
Center to center of wheels	B	7'1"
Standard track frame		8'11"
Long track frame		7'10"
Wide gauge frame	C	7'11"
Crawler bearing length		9'9"
Standard track frame		8'8"
Long track frame	D	9'6"
Wide gauge frame		11'4"
Overall track length		10'3"
Standard track frame		2'6"
Long track frame		7'10"
Wide gauge frame		8'2"
Overall height of track shoes		8'6"
Overall width 16" shoes		7'10"
Overall width 20" shoes		8'2"
Overall width 24" shoes		8'6"
Width of cab		7'10"
Frame clearance		13"
Minimum ground clearance		12"

LIFTING CAPACITIES WITH COUNTERWEIGHT "A AND B"																
R	30' BOOM			35' BOOM			40' BOOM			45' BOOM*			50' BOOM*			
	Lifting Capacity	Boom Angle	W	Lifting Capacity	Boom Angle	W	Lifting Capacity	Boom Angle	W	Lifting Capacity	Boom Angle	W	Lifting Capacity	Boom Angle	W	
10	14,000	77°	34'2"	13,900	79°	39'2"	13,800	80°	44'4"							
12	10,400	73°	33'7"	10,300	75°	38'9"	10,200	77°	43'11"	10,100	79°	49'1"	10,000	80°	54'0"	
15	7,600	67°	32'5"	7,500	70°	37'11"	7,400	73°	43'2"	7,300	75°	48'4"	7,200	76°	53'7"	
20	5,200	56°	29'9"	5,100	61°	35'7"	5,000	65°	41'2"	4,900	68°	46'7"	4,800	70°	52'0"	
25	3,800	43°	25'5"	3,700	51°	32'3"	3,600	57°	38'4"	3,500	61°	44'2"	3,400	64°	49'11"	
30	3,000	26°	18'1"	2,900	40°	27'3"	2,800	48°	34'6"	2,700	53°	41'0"	2,600	57°	47'1"	
35				2,400	24°	19'2"	2,300	37°	29'0"	2,200	45°	36'8"	2,100	50°	43'5"	
40							1,800	23°	20'3"	1,700	35°	30'9"	1,600	43°	38'8"	
45										1,400	21°	21'2"	1,300	33°	32'2"	
50													1,000	20°	22'3"	

LIFTING CAPACITIES WITH RETRACTABLE GANTRY AND COUNTERWEIGHT "C"																
R	30' BOOM			40' BOOM			50' BOOM*			60' BOOM*			70' BOOM*			
	Lifting Capacity	Boom Angle	W	Lifting Capacity	Boom Angle	W	Lifting Capacity	Boom Angle	W	Lifting Capacity	Boom Angle	W	Lifting Capacity	Boom Angle	W	
10	16,300	77°	34'2"	16,100	80°	44'4"										
12	12,300	73°	33'7"	12,100	77°	43'11"	11,900	80°	54'0"							
15	8,900	67°	32'5"	8,700	73°	43'2"	8,500	76°	53'7"	8,300	79°	63'8"				
20	6,000	56°	29'9"	5,800	65°	41'2"	5,600	70°	52'0"	5,400	74°	62'6"	5,200	76°	72'10"	
25	4,400	43°	25'5"	4,200	57°	38'4"	4,000	64°	49'11"	3,800	69°	60'9"	3,600	72°	71'5"	
30	3,400	26°	18'1"	3,200	48°	34'6"	3,000	57°	47'1"	2,800	63°	58'8"	2,600	67°	69'7"	
35				2,600	37°	29'0"	2,400	50°	43'5"	2,200	58°	55'9"	2,000	64°	67'10"	
40				2,100	23°	20'3"	1,900	43°	38'8"	1,700	52°	52'2"	1,500	58°	64'6"	
45							1,500	33°	32'2"	1,300	46°	47'9"	1,100	53°	61'1"	
50							1,300	20°	22'3"	1,100	39°	42'4"	900	48°	57'0"	
55										900	30°	35'1"	700	42°	52'0"	
60										700	19°	24'3"	500	36°	45'10"	
65													300	28°	37'10"	
70													200	17°	25'6"	

\*Retractable gantry and counterweight "C" recommended for booms over 40' in length. (Available as original equipment only).

All ratings are in pounds based upon 75% of minimum tipping loads with machine standing on hard level ground. For fast clamshell, lifting magnet and similar operation, we recommend using ratings based upon not more than 66 2/3% of tipping load.

## BRIEF SPECIFICATIONS

**CRAWLER**  
20" Tracks standard. 16" and 24" available. Two speed travel is standard. 2.1 m.p.h. in high and .96 m.p.h. in low. Extra long tracks available, 11'4" over all length. Wide gauge lower is available 12'2" track centers.

**LIFTING CRANE AND CLAMSHELL**  
30' boom is standard.  
Working weight, gasoline,  
20" tracks, no bucket.....25,900 Lbs.  
Closing line speed, single.....162 f.p.m.  
Holding line speed, single.....162 f.p.m.  
Swing speed.....4.9 r.p.m.

**DRAGLINE**  
30' boom is standard.  
Working weight, gasoline,  
20" tracks, no bucket.....25,900 Lbs.  
Hoist speed, single line.....162 f.p.m.  
Inhaul speed, single.....134 f.p.m.  
Swing speed.....4.9 r.p.m.

LINK-BELT SPEEDER CORPORATION RESERVES THE RIGHT TO ALTER THESE SPECIFICATIONS WITHOUT NOTICE

GENERAL INFORMATION ONLY

PRINTED IN U.S.A.

GENERAL INFORMATION ONLY

LS-51 LIFTING CRANE CAPACITIES

(With Retractable Gantry and Group 118BC Counterweight)

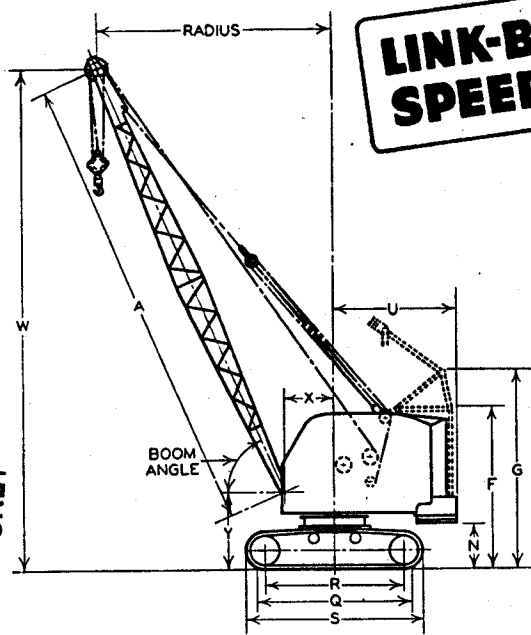
Radius of Load in Feet	30' BOOM		35' BOOM		40' BOOM		45' BOOM		50' BOOM	
	Lifting Capacity	W	Lifting Capacity	W	Lifting Capacity	W	Lifting Capacity	W	Lifting Capacity	W
10	16,300	34'2"	16,200	39'2"	16,100	44'4"	12,000	49'1"	11,900	54'0"
12	12,300	33'7"	12,200	38'9"	12,100	43'11"	8,600	48'4"	8,500	53'7"
15	8,900	32'5"	8,800	37'11"	8,700	43'2"	5,700	46'7"	5,600	52'0"
20	6,000	29'9"	5,900	35'7"	5,800	41'2"	4,100	44'2"	4,000	49'11"
25	4,400	25'5"	4,300	32'3"	4,200	38'4"	3,100	41'0"	3,000	47'1"
30	3,400	18'1"	3,300	27'3"	3,200	34'6"	2,500	36'8"	2,400	43'5"
35			2,700	19'2"	2,600	29'0"	2,000	30'9"	1,900	38'8"
40					2,100	20'3"	1,600	21'2"	1,500	33'2"
45									1,300	22'3"
50										

Radius of Load in Feet	55' BOOM		60' BOOM		65' BOOM		70' BOOM		
	Lifting Capacity	W	Lifting Capacity	W	Lifting Capacity	W	Lifting Capacity	W	
15	77.5°	8,400	58'7"	78.6°	8,300	63'8"	79.4°	8,200	68'10"
20	72.0°	5,500	57'2"	73.6°	5,400	62'6"	74.9°	5,300	67'9"
25	66.5°	3,900	55'5"	68.6°	3,800	60'9"	70.3°	3,700	66'2"
30	60.7°	2,900	52'10"	63.4°	2,800	58'8"	65.5°	2,700	64'1"
35	54.6°	2,300	49'8"	57.9°	2,200	55'9"	60.6°	2,100	61'6"
40	48.0°	1,800	45'10"	52.0°	1,700	52'2"	55.4°	1,600	58'5"
45	40.4°	1,400	40'7"	45.7°	1,300	47'9"	49.8°	1,200	54'7"
50	31.6°	1,200	33'10"	38.5°	1,100	42'4"	43.8°	1,000	49'9"
55	19.3°	1,000	23'1"	30.1°	900	35'1"	29.0°	800	44'1"
60				18.8°	700	24'3"	17.8°	600	36'5"
65								400	24'9"
70									400

All ratings in the above tables are in pounds, based upon 75% of minimum tipping loads, with machine standing on hard, level ground. For fast clamshell, lifting magnet and similar operations, we recommend using ratings based upon not more than 66 2/3% of tipping loads.

# Clearances-Specifications- Working Ranges LS-52 Crane

**LINK-BELT  
SPEEDER**



GENERAL DIMENSIONS		
Basic boom length	A	30'
Standard crawler side frame length	S	11'4"
Crawler ground bearing length	Q	9'9"
Center to center of wheels	R	8'11"
Overall width with 24" shoes		8'6"
Overall width 20" shoes		8'2"
Width of cab		7'10"
Overall height, retractable gantry lowered	F	10'6"
Overall height, retractable gantry raised	G	12'10"
Overall height, standard gantry	M	10'2"
Minimum counterweight clearance	N	2'8"
Tailswing	U	7'11"
Radius of boom hinge pin	X	3'1"
Height of boom hinge pin	Y	5'0"
Cab clearance height		10'2"
Minimum ground clearance		13"

GENERAL INFORMATION ONLY

LIFTING CAPACITIES WITH COUNTERWEIGHT "A & B" AND STANDARD GANTRY															
R	30' BOOM			35' BOOM			40' BOOM			45' BOOM*			50' BOOM*		
	Lifting Capacity	Boom Angle	W	Lifting Capacity	Boom Angle	W	Lifting Capacity	Boom Angle	W	Lifting Capacity	Boom Angle	W	Lifting Capacity	Boom Angle	W
10'	18,300	77°	34'2"	18,200	79°	39'2"	18,100	80°	44'4"						
12'	13,800	73°	33'7"	13,700	75°	38'9"	13,600	77°	43'11"	13,500	79°	49'1"	13,400	80°	54'0"
15'	10,000	67°	32'5"	9,900	70°	37'11"	9,800	73°	43'2"	9,700	75°	48'4"	9,600	76°	53'7"
20'	6,900	56°	29'9"	6,800	61°	35'7"	6,700	65°	41'2"	6,600	68°	46'7"	6,500	70°	52'0"
25'	5,100	43°	25'5"	5,000	51°	32'3"	4,900	57°	38'4"	4,800	61°	44'2"	4,700	64°	49'11"
30'	4,000	26°	18'1"	3,900	40°	27'3"	3,800	48°	34'6"	3,700	53°	41'0"	3,600	57°	47'1"
35'				3,300	24°	19'2"	3,200	37°	29'0"	3,100	45°	36'8"	3,000	50°	43'5"
40'							2,500	23°	20'3"	2,400	35°	30'9"	2,300	43°	38'8"
45'										2,000	21°	21'2"	1,900	33°	32'2"
50'													1,600	20°	22'3"

\*Retractable gantry recommended for booms over 40' long.  
All capacities shown are in pounds based on 75% of minimum tipping loads with machine standing on firm level ground. For fast clamshell, lifting magnet and similar operation, we recommend using ratings based upon not more than 66-2/3% of tipping load.

**LIFTING CAPACITIES WITH COUNTERWEIGHT "A, B & C" AND STANDARD GANTRY															
R	30' BOOM			35' BOOM			40' BOOM			45' BOOM*			50' BOOM*		
	Lifting Capacity	Boom Angle	W	Lifting Capacity	Boom Angle	W	Lifting Capacity	Boom Angle	W	Lifting Capacity	Boom Angle	W	Lifting Capacity	Boom Angle	W
10'	21,400	77°	34'2"	21,300	79°	39'2"	21,200	80°	44'4"						
12'	16,100	73°	33'7"	16,000	75°	38'9"	15,900	77°	43'11"	15,800	79°	49'1"	15,700	80°	54'0"
15'	11,800	67°	32'5"	11,700	70°	37'11"	11,600	73°	43'2"	11,500	75°	48'4"	11,400	76°	53'7"
20'	8,100	56°	29'9"	8,000	61°	35'7"	7,900	65°	41'2"	7,800	68°	46'7"	7,700	70°	52'0"
25'	6,100	43°	25'5"	6,000	51°	32'3"	5,900	57°	38'4"	5,800	61°	44'2"	5,700	64°	49'11"
30'	4,800	26°	18'1"	4,700	40°	27'3"	4,600	48°	34'6"	4,500	53°	41'0"	4,400	57°	47'1"
35'				3,900	24°	19'2"	3,800	37°	29'0"	3,700	45°	36'8"	3,600	50°	43'5"
40'							3,100	23°	20'3"	3,000	35°	30'9"	2,900	43°	38'8"
45'										2,500	21°	21'2"	2,400	33°	32'2"
50'													2,000	20°	22'3"

\*Retractable gantry recommended for booms over 40' long.  
\*\*Lifting crane service only. All capacities are based on 75% of minimum tipping loads.

**BRIEF SPECIFICATIONS**

**CRAWLER**

24" shoes standard, 20" optional. Two-speed travel standard; .96 m.p.h. in low, 2.1 m.p.h. in high. Independent swing and travel is optional.

**LIFTING CRANE AND CLAMSHELL**

30' boom standard.  
Working weight, gas engine,  
24" shoes, no bucket-----31,900 lbs.  
Closing line speed, single-----162 f.p.m.  
Holding line speed, single-----162 f.p.m.  
Holding line pull-----9950 lbs.  
Swing speed-----4.9 r.p.m.

**DRAGLINE**

30' boom standard.  
Working weight, gas engine,  
24" shoes, no bucket-----32,200 lbs.  
Hoist line speed, single-----162 f.p.m.  
Inhaul speed, single-----134 f.p.m.  
Hoist line pull-----9,950 lbs.  
Swing speed-----4.9 r.p.m.

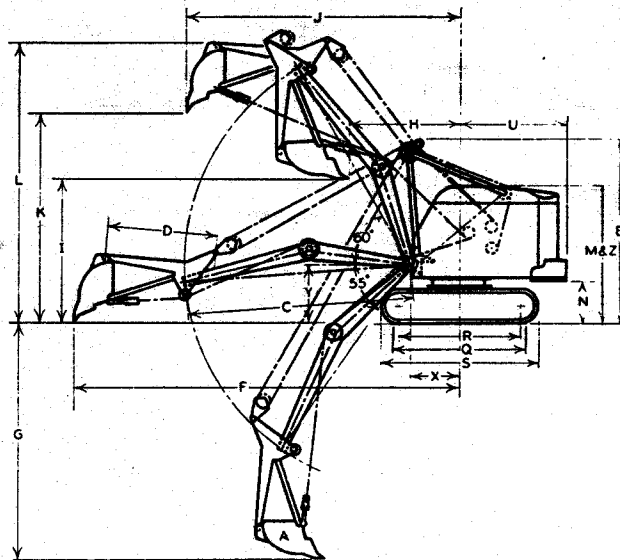
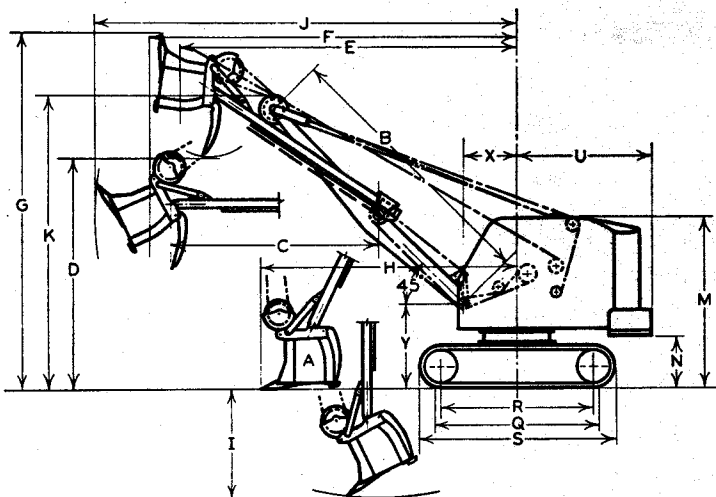
LINK-BELT SPEEDER CORPORATION RESERVES THE RIGHT TO ALTER THESE SPECIFICATIONS WITHOUT NOTICE

GENERAL INFORMATION ONLY

# LINK-BELT SPEEDER

# Clearances-Specifications-Working Ranges LS-52 Shovel and Trench Hoe

GENERAL INFORMATION ONLY



SHOVEL WORKING RANGES						
BOOM ANGLE		60°	55°	50°	45°	40°
Dipper Capacity, Cubic Yards	A	3/4	3/4	3/4	3/4	3/4
Boom Length	B	16'	16'	16'	16'	16'
Dipper Stick Length	C	13'	13'	13'	13'	13'
Maximum Dumping Height	D	16'11"	15'10"	14'8"	13'5"	12'1"
Dump. Radius at Max. Height	E	16'2"	17'6"	18'8"	19'8"	20'8"
Maximum Dumping Radius	F	20'1"	20'8"	21'2"	21'7"	22'1"
Maximum Cutting Height	G	24'8"	23'6"	22'4"	21'0"	19'6"
Maximum Clean-Up Radius	H	13'11"	14'4"	14'8"	15'0"	15'3"
Maximum Digging Depth	I	5'3"	5'7"	6'0"	6'6"	6'10"
Maximum Cutting Radius	J	23'4"	23'10"	24'4"	24'10"	25'3"
Boom Clearance Height	K	19'8"	18'11"	18'2"	17'2"	16'2"
Minimum Counterweight Clearance	N			38"		
Crawler Ground Bearing Length	Q			9'9"		
Center to Center of Wheels	R			8'11"		
Standard Crawler Side Frame Length	S			11'4"		
Minimum Tailswing	U			7'11"		
Radius of Boom Hinge Pin	X			3'1"		
Height of Boom Hinge Pin	Y			5'0"		

TRENCH HOE WORKING RANGES		
Bucket Capacity, Cubic Yards	A	.55
Cutting Width, Standard Bucket	B	36"
Boom Length	C	16'6"
Dipper Arm Length	D	7'9"
Height of Hoe Mast	E	13'7"
Maximum Digging Radius	F	28'3"
Maximum Digging Depth*	G	17'4"
Radius Beginning of Dump	H	8'3"
Ground Clearance Begin. of Dump	I	10'8"
Clearance Radius End of Dump	J	20'0"
Ground Clearance End of Dump	K	15'6"
Overall Height End of Dump	L	20'6"
Overall Height, Standard Gantry	M	10'2"
Minimum Counterweight Clearance	N	3'2"
Minimum Tailswing	U	7'11"
Radius of Boom Hinge Pin	X	3'7"
Height of Boom Hinge Pin	Y	4'4"
Cab Clearance Height	Z	10'2"

\*Dimension "G" shows Maximum Digging Depth with 55° boom, conforming to Paragraph 6.41 of U.S. Dept. of Commerce Commercial Standard CS90-49. The maximum "effective" digging depth will vary according to character of excavation and soil.

## BRIEF SPECIFICATIONS

### POWER UNIT

Standard — Waukesha 6BZ gas, 6 cylinder, 55 net h.p. @ 1510 r.p.m. full load speed.  
Optional — Caterpillar D315 diesel, General Motors 2030C diesel, and International UD-9A diesel.

### SHOVEL

Working weight, gasoline engine, 24" shoes.....34,000 lbs.  
Hoist speed, single line.....134 f.p.m.  
Crowd speed.....101 f.p.m.  
Retract speed.....146 f.p.m.  
Swing speed.....4.9 r.p.m.

### TRENCH HOE

Working weight, gasoline engine, 24" shoes.....32,800 lbs.  
Inhaul speed, 2 part line.....67 f.p.m.  
Hoist speed, 2 part line.....81 f.p.m.  
Swing speed.....4.9 r.p.m.

GENERAL INFORMATION ONLY