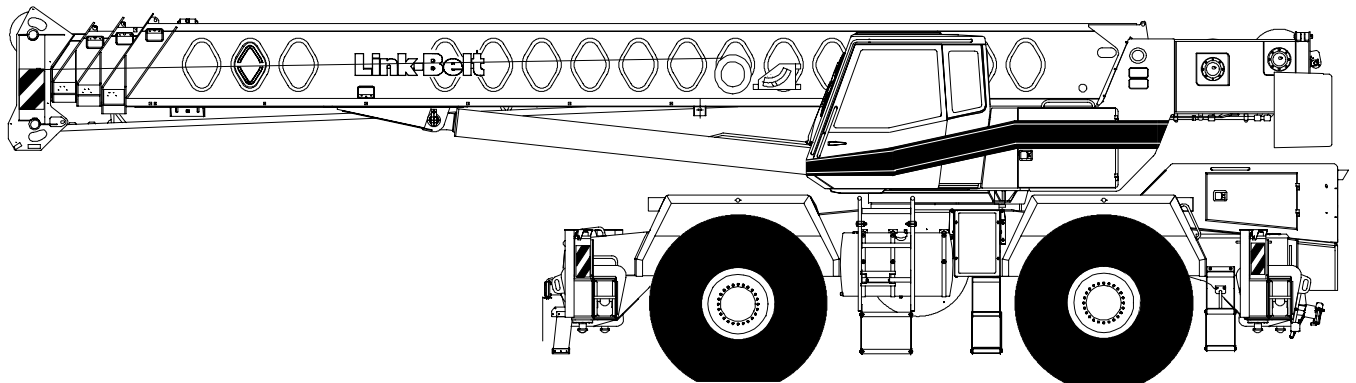


Technical Data

Specifications & Capacities

RTC-8065

Telescopic Boom Rough Terrain Crane
65 ton (58.9 metric ton)



CAUTION: This material is supplied for reference use only. Operator must refer to in-cab Crane Rating Manual and Operator's Manual to determine allowable crane lifting capacities and assembly and operating procedures.

Table Of Contents

	Pages
Specifications	1-4
Capacities	1-20

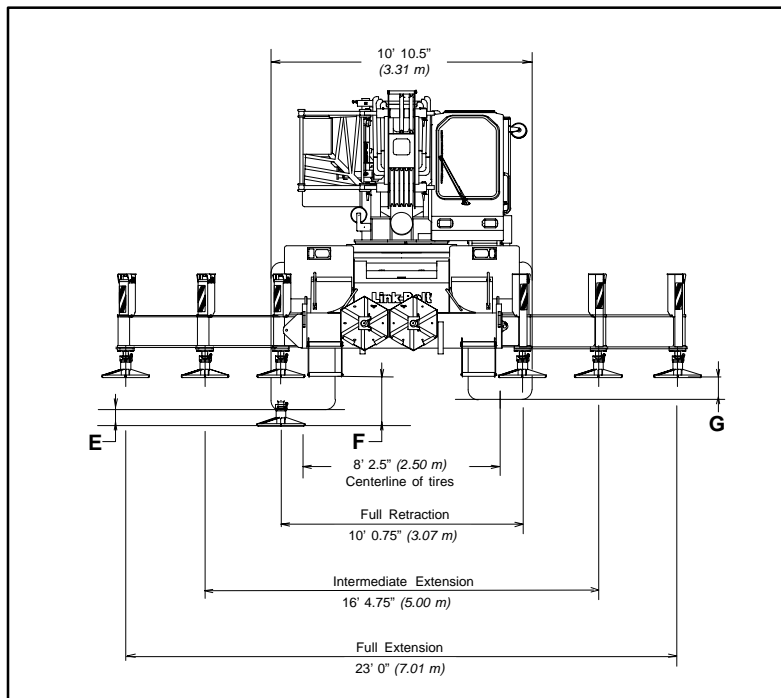
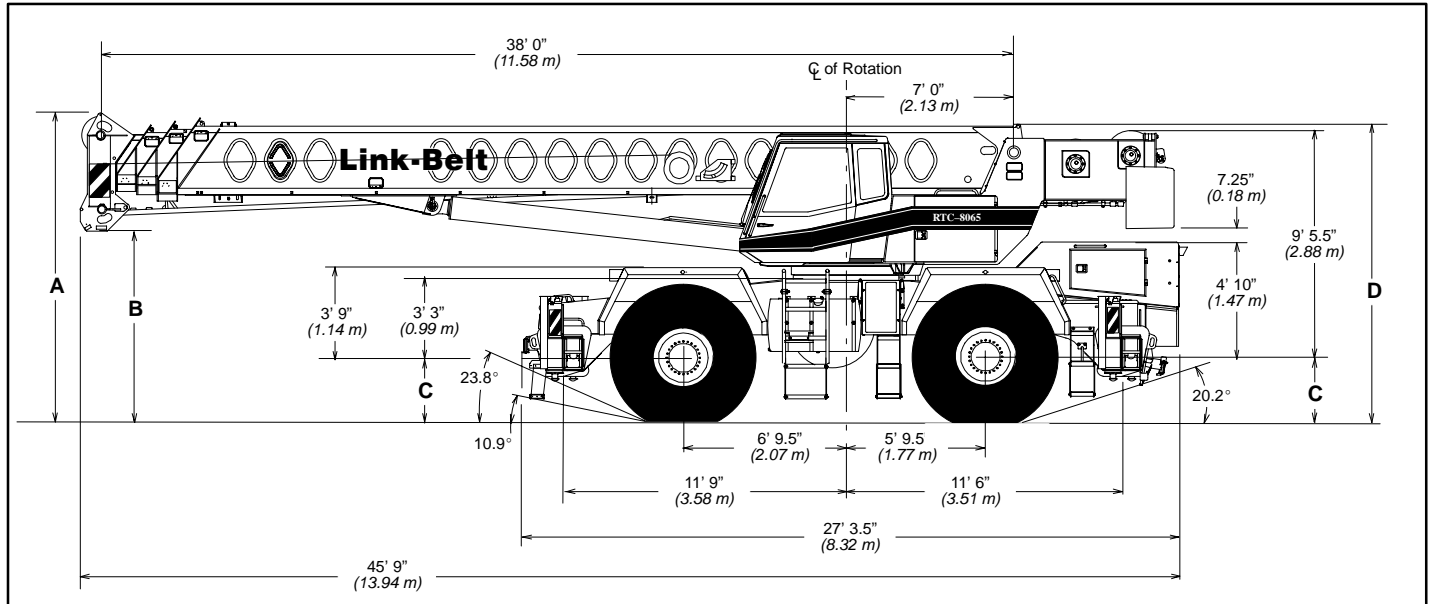
This page intentionally left blank

Specifications

Telescopic Boom Rough Terrain Crane

RTC-8065

65-ton (58.97 metric tons)



General Dimensions		feet	meters
Tailswing of Counterweight		13' 9.25"	4.20
Turning radius (4-wheel steer centerline of tires)		23' 10"	7.26
Turning radius (2-wheel steer centerline of tires)		46' 10"	14.28
Turning radius (4-wheel steer outside front carrier corner)		27' 5"	8.36
Turning radius (2-wheel steer outside front carrier corner)		49' 10"	15.19
	Tire Size		
Dimension	29.5 x 25	29.5 R 25	
A	12' 10.75" (3.93 m)	12' 11.75" (3.97 m)	
B	7' 11.5" (2.42 m)	8' 0.5" (2.44 m)	
C	2' 8" (0.81 m)	2' 9" (0.84 m)	
D	12' 5" (3.78 m)	12' 6" (3.81 m)	
E	8.25" (0.21 m)	7" (0.18 m)	
F	25.25" (0.64 m)	25.25" (0.64 m)	
G	11.25" (0.29 m)	12.25" (0.31 m)	

Upper Structure

■ Boom

Patented Design

- Boom side plates have diamond shaped impressions for superior strength to weight ratio and 100,000 psi (689.5 mPa) steel angle chords for lateral stiffness.
- Boom telescope sections are supported by top, bottom, and adjustable side wear shoes to prevent metal to metal contact.

Standard Boom

- 38' – 115' (11.58 – 35.05 m) four –section full power boom
 - Basic mode (or mode "B") is the full power, synchronized mode of telescoping all sections proportionally 115' (35.05 m).
 - The exclusive **A-max** mode (or mode "A") extends only the inner mid-section to 63' 6" (19.35 m) offering increased capacities for in-close, maximum capacity picks.
 - Mechanical Boom Angle Indicator

Boom Head

- Five 16.5" (0.42 m) root diameter nylon sheaves handle up to ten parts of wire rope.
- Quick reeve design.
- Boom head designed for quick reeve of hook block.
- Rope dead end lugs provided on each side of boom head.
- Easily removable wire rope guards.
- Fly pinning alignment tool.

Boom Elevation

- Hydraulic cylinder with holding valve and bushing in each end.
- Hand control for controlling boom elevation from -3° to +78°.

Optional Auxiliary Lifting Sheave

- Single 16.5" (0.42 m) root diameter nylon sheave with removable wire rope guard mounted on boom.
- Use with one or two parts of line.
- Does not affect erection of fly or use of main head sheaves for multiple reeving.

Optional

- 70-ton (63.5 mt) 5-sheave, quick reeve hook block
- 60-ton (54.43 mt) 4-sheave, quick reeve hook block
- 40-ton (36.28 mt) 4-sheave, quick reeve hook block
- 8.5-ton (7.7 mt) hook ball
- Boom floodlight

■ Fly

Optional

- 36.5' (11.13 m) one piece lattice fly, stowable, offsettable to 1°, 15°, or 30°
- 36.5' – 61' (11.13 – 18.59 m) two piece (bi-fold) lattice fly, stowable, offsettable to 1°, 15°, or 30°

■ Cab and Controls

Environmental ULTRA CAB™

- LFC-2000 construction process featuring laminated fibrous composite material.
- Isolated from sound and vibration by a neoprene seal.
- Six-way adjustable operator's seat with retractable seat belt.
- Four-way adjustable tilting and locking steering wheel.
- All windows are tinted and tempered safety glass.
- Slide by door opens to 3' (0.91 m) width.
- Sliding rear and right side windows and swing up roof windows for maximum visibility and ventilation.
- Engine dependent warm-water heater with defroster.
- Hand-held outrigger controls.
- Sight level bubble
- Audible swing alarm
- Backup alarm
- Cab mounted work lights
- Electric windshield wiper
- Top hatch window wiper
- Fire extinguisher
- Dome light
- Hand throttle
- Warning horn
- Travel lights
- Sun visor
- Mirrors
- Cup holder
- Circulating fan

Optional

- Amber strobe light and rotating beacon
- Emergency steering system
- Rear steer indicator
- Air conditioning

Controls

Hydraulic controls (joystick type) for:

- Main winch
- Drum rotation indicators
- Optional auxiliary winch
- Optional single-axis controls
- Boom hoist
- Swing

Foot controls for:

- Boom telescope
- Engine throttle with throttle lock
- Swing brake

Cab Instrumentation

Corner post mounted gauges for:

- Hydraulic oil temperature
- Converter temperature
- Water temperature
- Tachometer
- Audio/visual warning system
- Fuel
- Voltmeter
- Oil pressure

■ Rated Capacity Limiter

- **Microguard 434** Graphic audio-visual warning system built into dash with anti-two block and function limiters.

Operating data available includes:

- Crane configuration
- Boom length
- Head height
- Allowed load
- % of allowed load
- Boom angle
- Radius of load
- Actual load

Presetable alarms include:

- Maximum and minimum boom angles
- Max tip height and boom length
- Swing left/right positions
- Operator defined area alarm is standard.
- Anti-two block weight designed for quick reeve of hookblock.

Optional

- **Internal RCL light bar:** Visually informs operator when crane is approaching maximum load capacity with a series of lights; green, yellow, and red.
- **External RCL light bar:** Visually informs ground crew when crane is approaching maximum load capacity kickouts and pre-settable alarms with a series of lights; green, yellow, and red.

■ Swing

- Bi-directional hydraulic swing motor mounted to a planetary reducer for 360° continuous smooth swing at 2 r.p.m.
- **Swing park brake** – 360° electric over hydraulic (spring applied, hydraulic released) multi-disc brake mounted on the speed reducer. Operated by toggle switch in overhead control console.
- **Swing brake** – 360°, foot operated, hydraulic applied disc brake mounted on the speed reducer.
- **Travel swing lock** – Standard; two position travel lock (pin device) operated from the operator's cab.
- **Counterweight** – Pinned to upper structure frame. 12,000 lb (5 443 kg). Optional hydraulically controlled counterweight removal.

Optional

- 360° (pawl-in-gear) swing lock (meets New York City requirements).

■ Hydraulic System

Main Pump

- Four-section gear-type pump
- Combined pump capacity 132 gpm (500 Lpm)
- Mounted on torque converter, powered by engine through a pump disconnect
- Pump disconnect is a spline type clutch engaged/disengaged from carrier.
- Pump operates at 3,500 psi (24.1 mPa) maximum system pressure.
- O-Ring Face Seal (ORFS) technology throughout with hydraulic oil cooler.

Pilot Pressure / Brake / Counterweight Removal

- Pressure compensated piston pump powered by carrier engine. Operates at 2,650 psi (18.3 mPa) maximum.

Telescope/Outrigger/Steering Pump

- Single gear-type pump, 24 gpm (91 Lpm) maximum. Mounted on torque converter, powered by engine through a direct mechanical drive.
- Pump operates at 3,000 psi (20.7 mPa) maximum system pressure.

Reservoir

- 170 gal (643.5 L) capacity. Diffuser for deaeration.

Filtration

- One, 10-micron filter located inside hydraulic reservoir. Accessible for easy replacement.

Control Valves:

- Six separate pilot operated control valves allow simultaneous operation of all crane functions.

Load Hoist System

Standard

- 2M rear winch with grooved lagging
- Two-speed motor and automatic brake
- Power up/down mode of operation
- Controls for future addition of auxiliary winch.

- Bi-directional piston-type hydraulic motor, driven through a planetary reduction unit for positive operator control under all load conditions.
- Asynchronous parallel double crossover grooved drums minimize rope harmonic motion.
- Winch circuit control provides balanced oil flow to both winches for smooth, simultaneous operation.

Line Pulls and Speeds

- Maximum line pull 16,506 lb (7 487 kg) and maximum line speed of 454 f.p.m. (138.4 m/min) on standard 16" (0.41 m) root diameter grooved drum.
- Rotation resistant rope

Optional

- 2M front winch with two-speed motor and automatic brake, power up/down mode of operation.
- Hoist drum cable followers
- Third wrap indicators

Carrier

Type

- 10' 10.5" (3.31 m) wide, 151" (3.84 m) wheelbase.
- 4 x 4 x 4 – (4-wheel steer, 4-wheel drive) For rough terrain with limited turning area.

Frame

- 100,000 psi (689.5 mPa) steel, double walled construction.
- Integral 100,000 psi (689.5 mPa) steel outrigger boxes.

Standard Carrier Equipment

- Two front, rear, and mid-point carrier steps.
- Non-slip safety strips on carrier deck
- Deep front storage
- Fenders
- Pontoon storage
- Full lighting package
- Front towing shackles

Optional

- Front and rear mounted pintle hook
- Front tow winch

Engine

Engine	Caterpillar 3126B 7.2L
Cylinders – cycle	6 – 4
Bore	4.33 in. (110 mm)
Stroke	5.00 in. (127 mm)
Displacement	442 cu. in. (7.2 L)
Maximum brake hp	225 @ 2,200 rpm
Peak torque (ft. lb.)	646 @ 1,500 rpm
Electric system	12 volt
Starting system	12 volt
Fuel capacity	95 gal (359.6 L)
Alternator	130 amps
Crankcase capacity (total system)	30 qt (28.4 L)
<ul style="list-style-type: none"> • Water/fuel separator on engine • Optional ether injection package 	

Transmission

- Spicer off-highway three-speed, two-range power shift transmission.
- Six speeds forward and reverse.
- Front axle disconnect for two or four-wheel drive.

Axles

- Front and Rear – Heavy duty planetary drive/steer type
- Front axle disconnect

Suspension

Front Axle

- Rigid mounted to frame

Rear Axle

- Pin mounted on bronze bushings. Automatic hydraulic rear axle oscillation lock-out cylinders engage when upper structure rotates 2.5° past centerline.

Steering

- Hydraulic two-wheel, four-wheel, and “crab” steering.
- Modes selected by toggle switch on dash.
- All modes fully controlled by steering wheel.

Optional

- Rear steer indicator

Tires

Front and Rear

- Standard 29.5 x 25 (28-PR) Earthmover type

Optional

- 29.5R25 XHA 1 star radials
- Spare tires and rims.

Brakes

Service

- Hydraulic disc-type brakes at each wheel end.

Parking/Emergency

- Disc-type, spring applied, hydraulic released, fade resistant, operated from cab, mounted on front axles.

Outriggers

- Three position operation capability.
- Four hydraulic, telescoping beam and jack outriggers.
- Vertical jack cylinders equipped with integral holding valve.
- Beams extend to 23' 0" (7.01 m) centerline-to-centerline and retract to within 10' 10.5" (3.31 m) overall width.
- Equipped with stowable, lightweight 23.5" x 27.25" (59.7 x 69.2 cm) hexagonal steel pontoons.
- Controls and sight level bubble located in cab.

Confined Area Lifting Capacities (CALC™) System

- Three operational outrigger configurations are available:
 - Full extension –23' 0" (7.01 m)
 - Intermediate position – 16' 4.75" (5.00 m)
 - Full retraction –10' 0.75" (3.07 m)
- For confined area operation, rated lifting capacities are provided for the intermediate and fully retracted outrigger positions.
- When the outrigger position levers (located on the outrigger beams) are engaged, the operator can set the crane in the intermediate or full retraction outrigger position without having to leave the cab.

Optional

- Outrigger cover package

Travel Speeds and Gradeability

Tires	29.5 x 25
Maximum Speed	19.5 mph (31.4 km/h)
Gradeability at 70% converter efficiency	112.9%
Maximum Tractive Effort at 70% converter efficiency	76,715 lb (34 797 kg)
Gradeability at 1.0 mph (1.6 km/hr)	55.6%
Maximum Tractive Effort at 1.0 mph (1.6 km/hr)	50,516 lb (22 914 kg)
Crane operating angle must not exceed 35° (77% grade). Numbers reflect main hydraulic pump engaged.	

■ Axle Loads

Base crane with standard 38' – 115' (11.58 – 35.05 m) four-section boom, 2M main winch with 2-speed hoisting and power up/down, 630' (192 m) 3/4" (19 mm) wire rope. 4x4x4 carrier with Caterpillar 3126B 7.2L engine, 29.5 x 25 tires, counterweight, and no fuel.	G.V.W. ¹		Upper facing front				Upper facing rear			
			Front axle		Rear axle		Front axle		Rear axle	
	lb	kg	lb	kg	lb	kg	lb	kg	lb	kg
	91,488	41 498	44,296	20 092	47,192	21 406	41,804	18 962	49,684	22 253
Remove 29.5 x 25 tires and wheels	-6,732	-3 054	-3,366	-1 527	-3,366	-1 527	-3,366	-1 527	-3,366	-1 527
29.5R25 XHA Tires	964	438	482	219	482	219	482	219	482	219
Remove outrigger beams	-5,235	-2 374	-2,461	-1 116	-2,774	-1 258	-2,461	-1 116	-2,774	-1 258
Tow winch	686	311	1,002	454	-316	-143	1,002	454	-316	-143
100 gal (378.5 L) fuel	685	310	364	165	321	145	364	165	321	145
2M auxiliary winch with 630' (192 m) of 3/4" (19 mm) rope	779	354	-203	-92	982	445	920	417	-141	-64
Remove front carrier counterweights	-3628	-1 646	-4,858	-2 204	1,230	558	-4,858	-2 204	1230	558
Hydraulic counterweight removal	353	160	163	74	190	86	518	235	-165	-75
Remove counterweight	-12,000	-5 443	6,586	2 987	-18,586	-8 430	-17,633	-7 998	5,633	2 555
Air conditioning	287	130	55	25	232	105	209	95	78	35
36.5' (11.13 m) one-piece lattice fly, with tip lugs, stowable	1,542	700	2,485	1 115	-619	-415	-1,039	-471	2,581	1 171
36.5' – 61' (11.13 – 18.59 m) two-piece (bifold) lattice fly, stowable	2,250	1 021	3,165	1 436	-915	-415	-1,094	-496	3,344	1 517
Fly storage brackets with all fly options	160	73	228	103	-69	-30	-81	-36	241	109
Auxiliary lifting sheave assembly	110	50	355	152	-225	-102	-233	-106	343	156
8.5-ton (7.71 mt) hook ball @ front bumper	360	163	566	256	-206	-93	n/a	n/a	n/a	n/a
70-ton (63.50 mt) 5-sheave hook block @ front bumper	1,390	631	2,186	992	-796	-361	n/a	n/a	n/a	n/a
60-ton (54.43 mt) 4-sheave hook block @ front bumper	1,150	522	1,809	821	-659	-299	n/a	n/a	n/a	n/a

¹ – Adjust gross weight and axle loading according to component weight. Note: All weights are ± 3%.

Tire	Max. Axle Load @ 20 mph (32.2 km/hr)
29.5 x 25 (28-PR)	53,000 (24 041 kg)
29.5R25 XHA 1 Star	53,000 (24 041 kg)

Lifting Capacities

PCSA Class 10-263

Hydraulic Rough Terrain Crane

RTC-8065 65-ton (60 metric ton)

Boom and fly capacities for this machine are listed by the following sections:

Fully Extended Outriggers (12,000 lb. and 0 lb. counterweight)

- Working Range Diagram
- 38' 0" to 63.6' main boom capacities, *A-max* Mode
- 38' 0" to 115' 0" main boom capacities, Basic Mode "B"
- 36' 6" offsettable fly capacities, Basic Mode "B"
- 36' 6" - 61' 0" 2-piece offsettable fly capacities, Basic Mode "B"

Intermediate Extended Outriggers (12,000 lb. counterweight)

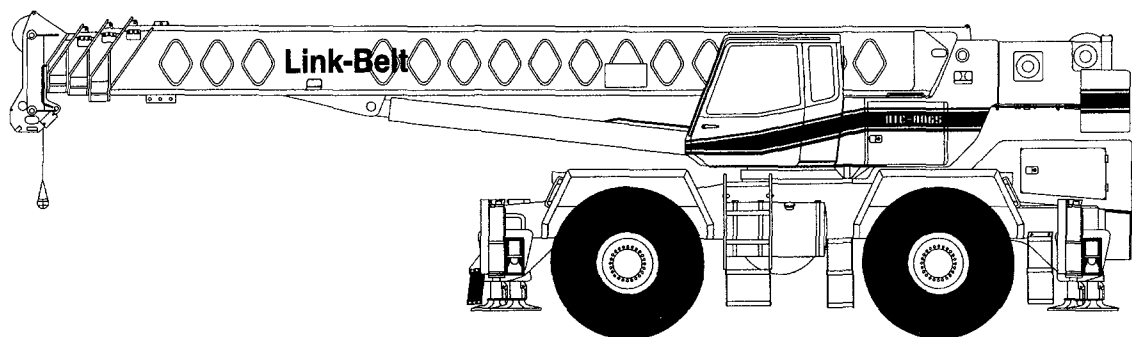
- Working Range Diagram
- 38' 0" to 63.6' main boom capacities, *A-max* Mode
- 38' 0" to 115' 0" main boom capacities, Basic Mode "B"
- 36' 6" offsettable fly capacities, Basic Mode "B"
- 36' 6" - 61' 0" 2-piece offsettable fly capacities, Basic Mode "B"

Fully Retracted Outriggers (12,000 lb. counterweight)

- Working Range Diagram
- 38' 0" to 63.6' main boom capacities, *A-max* Mode
- 38' 0" to 115' 0" main boom capacities, Basic Mode "B"

On Tires - (12,000 lb. counterweight)

- Working Range Diagram
- 38' 0" to 63.6' main boom capacities, *A-max* Mode
- 38' 0" to 85' 0" main boom capacities, Basic Mode "B"



CAUTION: This material is supplied for reference only. Operator must refer to in-cab crane rating manual to determine allowable machine lifting capacities and operating procedures.

Table of Contents

Page	Contents
3 - 4	Operating Instructions
5	A -max Mode & Basic Mode "B" Boom Extension Diagram
5	Winch Performance
5	Wire Rope Strength
5	Working Areas
5	Hydraulic Circuit Pressure Settings
5	Capacity Deductions For Auxiliary Load Handling Equipment
5	Tire Inflation
5	Pontoon Loadings
5	Outrigger Spread
	Fully Extended Outriggers (12,000 lb. Counterweight)
6	Working Range Diagram
7	Main Boom Lifting Capacities
8	Fly Lifting Capacities
	Fully Extended Outriggers (0 lb. Counterweight)
9	Working Range Diagram
10	Main Boom Lifting Capacities
11	Fly Lifting Capacities
	Intermediate Extended Outriggers (12,000 lb. Counterweight)
12	Working Range Diagram
13	Main Boom Lifting Capacities
14	Fly Lifting Capacities
	Fully Retracted Outriggers (12,000 lb. Counterweight)
15	Working Range Diagram
16	Main Boom Lifting Capacities
	On Tires (12,000 lb. Counterweight)
17	Working Range Diagrams
18 - 19	Main Boom Lifting Capacities - 29.5 x 25 (28-PR) Tires
19 - 20	Main Boom Lifting Capacities - 29.5R25 XHA Tires

OPERATING INSTRUCTIONS

GENERAL:

1. Rated lifting capacities in pounds as shown on lift charts pertain to this crane as originally manufactured and normally equipped. Modifications to the crane or use of optional equipment other than that specified can result in a reduction of capacity.
2. Construction equipment can be dangerous if improperly operated or maintained. Operation and maintenance of this crane must be in compliance with the information in the Operator's, Parts and Safety Manuals supplied with this crane. If these manuals are missing, order replacements through the distributor.
3. The operator and other personnel associated with this crane shall read and fully understand the latest applicable American National Standards Institute (ANSI) safety standards for cranes.
4. The maximum allowable lifting capacities are based on crane standing level on firm supporting surface.

SET UP:

1. The crane shall be leveled on a firm supporting surface. Depending on the nature of the supporting surface, it may be necessary to have structural supports under the outrigger pontoons or tires to spread the load to a larger bearing surface.
2. When making lifts on outriggers, all tires must be free of supporting surface. All outrigger beams must be extended to the same length; fully retracted, intermediate extended, or fully extended.
3. When making lifts on tires, they must be inflated to the recommended pressure. (See Operation note 19 and Tire Inflation.)
4. When operating on tires, do not exceed 70 degree maximum boom angle. Loss of backward stability will occur causing a tipping condition.
5. When operating with 0 pound counterweight, do not swing over side on tires unless boom is fully retracted and boom angle is above 20 degrees.
6. For required parts of line, see Wire Rope Strength and Winch Performance.

OPERATION:

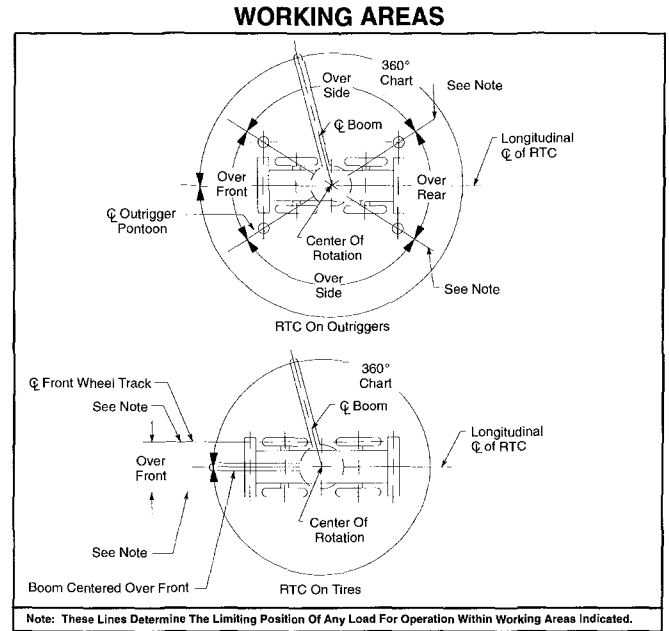
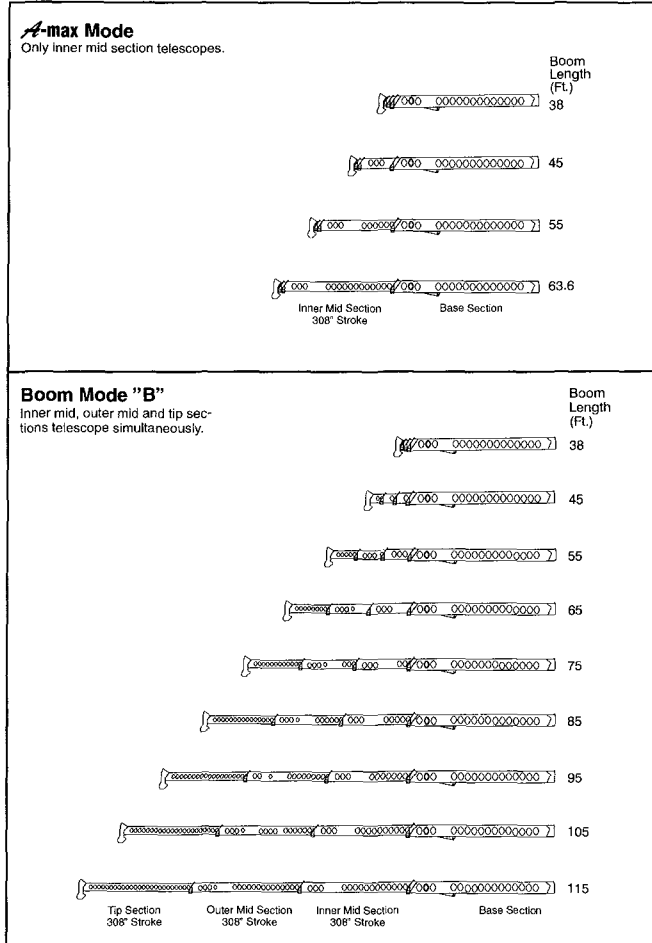
1. Rated lifting capacities at rated radius shall not be exceeded. Do not tip the crane to determine allowable loads. For concrete bucket operation, weight of bucket and load shall not exceed 80% of rated lifting capacities. For clamshell bucket operation, weight of bucket and bucket contents is restricted to a maximum weight of 7000 pounds or 80% of rated lifting capacity, whichever is less. For magnet operation, weight of magnet and load is restricted to a maximum weight of 7000 pounds or 80% of rated lifting capacity, whichever is less. For clamshell and magnet operation, maximum boom length is restricted to 55 feet and the boom angle is restricted to a minimum of 35 degrees. Lifts with either fly erected or boom in **A-max** mode are prohibited for both clam and magnet operation.
2. The crane capacities shown on fully extended, or intermediate extended outriggers do not exceed 85% of the tipping loads. The crane capacities shown on fully retracted outriggers or tires do not exceed 75% of the tipping loads as determined by SAE crane stability test code J-765A.
3. The crane capacities in the shaded areas above the bold lines, are based on structural strength or hydraulic limitations. The crane capacities below the bold lines are based on stability ratings. Some capacities are limited by a maximum obtainable 78° boom angle.
4. Rated lifting capacities include the weight of hook block, slings, bucket, magnet and auxiliary lifting devices. Their weights must be subtracted from the listed rated capacity to obtain the net load which can be lifted. Also, see Capacity Deductions For Auxiliary Load Handling Equipment.
5. Rated lifting capacities are based on freely suspended loads. No attempt shall be made to move a load horizontally on the ground in any direction.
6. Rated lifting capacities are for lift crane service only.
7. Do not operate at any radii or boom lengths (minimum or maximum) where capacities are not listed. At these positions, the crane can overturn without any load on the hook or cause boom failure.

Operating Instructions (con't)

8. The maximum loads which can be telescoped are not definable because of variation in loadings and crane maintenance, but it is permissible to attempt retraction and extension within the limits of the applicable load rating chart.
9. For main boom capacities when either boom length or radius or both are between values listed, proceed as follows:
 - a. For boom lengths not listed, use rating for next longer boom length or next shorter boom length, whichever smaller.
 - b. For load radii not listed, use rating for next larger radius.
10. The user shall operate at reduced ratings to allow for adverse job conditions, such as: soft or uneven ground, out of level conditions, wind, side loads, pendulum action, jerking or sudden stopping of loads, hazardous conditions, experience of personnel, traveling with loads, electrical wires, etc. Side load on boom or fly is extremely dangerous.
11. When making lifts with auxiliary head machinery, the effective length of the boom increases by 2 feet.
12. Power sections of boom must be extended in accordance with *A-max* mode or boom mode "B". In boom mode "B" all power sections must be extended or retracted equally.
13. The least stable rated working area on outriggers is over the side.
14. Rated lifting capacities are based on correct reeving. Deduction must be made for excessive reeving. Any reeving over minimum required (see Wire Rope Strength) is considered excessive and must be accounted for when making lifts. Use working range diagram to estimate the extra feet of rope then deduct 1 lb for each extra foot of wire rope before attempting to lift a load.
15. The loaded boom angle combined with the boom length give only an approximation of the operating radius. The boom angle, before loading, should be greater to account for deflection. For main boom capacities, the loaded boom angle is for reference only. For fly capacities, the load radius is for reference only.
16. For fly capacities with main boom length less than 115 ft and greater than 95 ft, the rated loads are determined by the boom angle using the 115 ft boom and fly chart. For angles not shown use the next lower boom angle to determine the allowable capacity.
17. For fly capacities with main boom length less than 95 ft, the rated loads are determined by the boom angle only using the 95 ft boom and fly chart. For angles not shown, use the next lower boom angle to determine the allowable capacity.
18. The 38 ft boom length capacities are based on boom fully retracted. If the boom is not fully retracted, do not exceed capacities shown for the 45 ft boom length.
19. Crane capacities on tires depend on tire capacity, condition of tires, and tire air pressure. On tire picks require lifting from main boom head only on a smooth and level surface. Pick and carry operations are restricted to a maximum speed of 1 MPH. The boom must be centered over the front of the crane with two position travel swing lock engaged and the load must be restrained from swinging. Lifts with any fly erected on tires are prohibited. For correct tire pressure, see "Tire Inflation". Also, see Carrier Tire Inflation Label.

DEFINITIONS:

1. Load Radius: Horizontal distance from a projection of the axis of rotation to the supporting surface before loading to the center of the vertical hoist line or tackle with load applied.
2. Loaded Boom Angle: The angle between the boom base section and horizontal after lifting the load at the rated radius.
3. Working Area: Area measured in a circular arc about the center line of rotation as shown on the working area diagram.
4. Freely Suspended Load: Load hanging free with no direct external force applied except by the hoist line.
5. Side Load: Horizontal side force applied to the lifted load either on the ground or in the air.
6. No Load Stability Limit: The stability limit radius is the radius beyond which it is not permitted to position the boom plus load handling equipment. Crane may overturn without any load on the hook.



HYDRAULIC CIRCUIT PRESSURE SETTINGS

Function	Pressure
Front And Rear Winch	3,500 psi
Outrigger	3,000 psi
Boom Hoist	3,500 psi
Telescope	3,000 psi
Swing	1,500 psi
Steering	1,600 psi
Pilot Control	500 psi
Counterweight Removal	1,700 psi

CAPACITY DEDUCTIONS FOR AUXILIARY LOAD HANDLING EQUIPMENT

Load Handling Equipment	Weight (lb)
Auxiliary Head Attached	150
70 Ton 5 Sheave Hook Block (See Hook Block For Actual Weight)	1,400
60 Ton 4 Sheave Hook Block (See Hook Block For Actual Weight)	1,100
8.5 Ton Hook Ball (See Hook Ball For Actual Weight)	360

Lifting From Main Boom With:	
24.5 Ft. Fly Tip Stowed On Boom Base	300
36.5 Ft. Offset Fly Stowed On Boom Base	900
36.5 Ft. Offset Fly Erected But Not Used	4,800
61 Ft. Offset Fly Stowed On Boom Base	1,200
61 Ft. Offset Fly Erected But Not Used	8,900

Lifting From 36.5 Ft. Offset Fly With:	
24.5 Ft. Fly Tip Stowed On Boom Base	300
24.5 Ft. Tip Erected But Not Used	PROHIBITED
24.5 Ft. Tip Stowed On 36.5 Ft. Offset Fly	PROHIBITED

Note: Capacity deductions are for Link-Belt supplied equipment only.

WINCH PERFORMANCE

Wire Rope Layer	Winch Line Pulls		Drum Rope Capacity (ft)	
	Two Speed Winch		Layer	Total
	Low Speed Available lb	High Speed Available lb		
1	16,805*	8,299	110	110
2	15,629*	7,718	118	228
3	14,592*	7,206	126	354
4	13,691*	6,761	135	489
5	12,894	6,368	143	632
6	12,191	6,020	151	783

* Reduce to 12,920 lb if using Type RB Rope.

WIRE ROPE STRENGTH

Maximum Lifting Capacities Based On Wire Rope Strength		
Parts of Line	3/4"	Notes
	Type RB	
1*	12,920	Capacities shown are in pounds and working loads must not exceed the ratings on the capacity charts in the Crane Rating Manual. Study Operator's Manual for wire rope inspection procedures. *Use of swivel end with 1 part of line is not recommended. ** Based on less than 5 to 1 safety factor.
2	25,840	
3	38,760	
4	51,680	
5	64,600	
6	77,520	
7	90,440	
8	103,360	
9	116,280	
10	130,000**	

LBCE	DESCRIPTION
TYPE RB	18 X 19 Rotation Resistant - Extra Improved Plow Steel - Preformed Right Lay - Regular Lay, Swaged

TIRE INFLATION

Tire Size	Operation	Tire Pressure (psi)
29.5 X 25 -28 Ply	1 mph	75
	Stationary	75
29.5 R25 -XHA	1 mph	75
	Stationary	75

PONTOON LOADINGS

Maximum Pontoon Load:	Maximum Pontoon Ground Bearing Pressure:
94,000 lb	208 psi

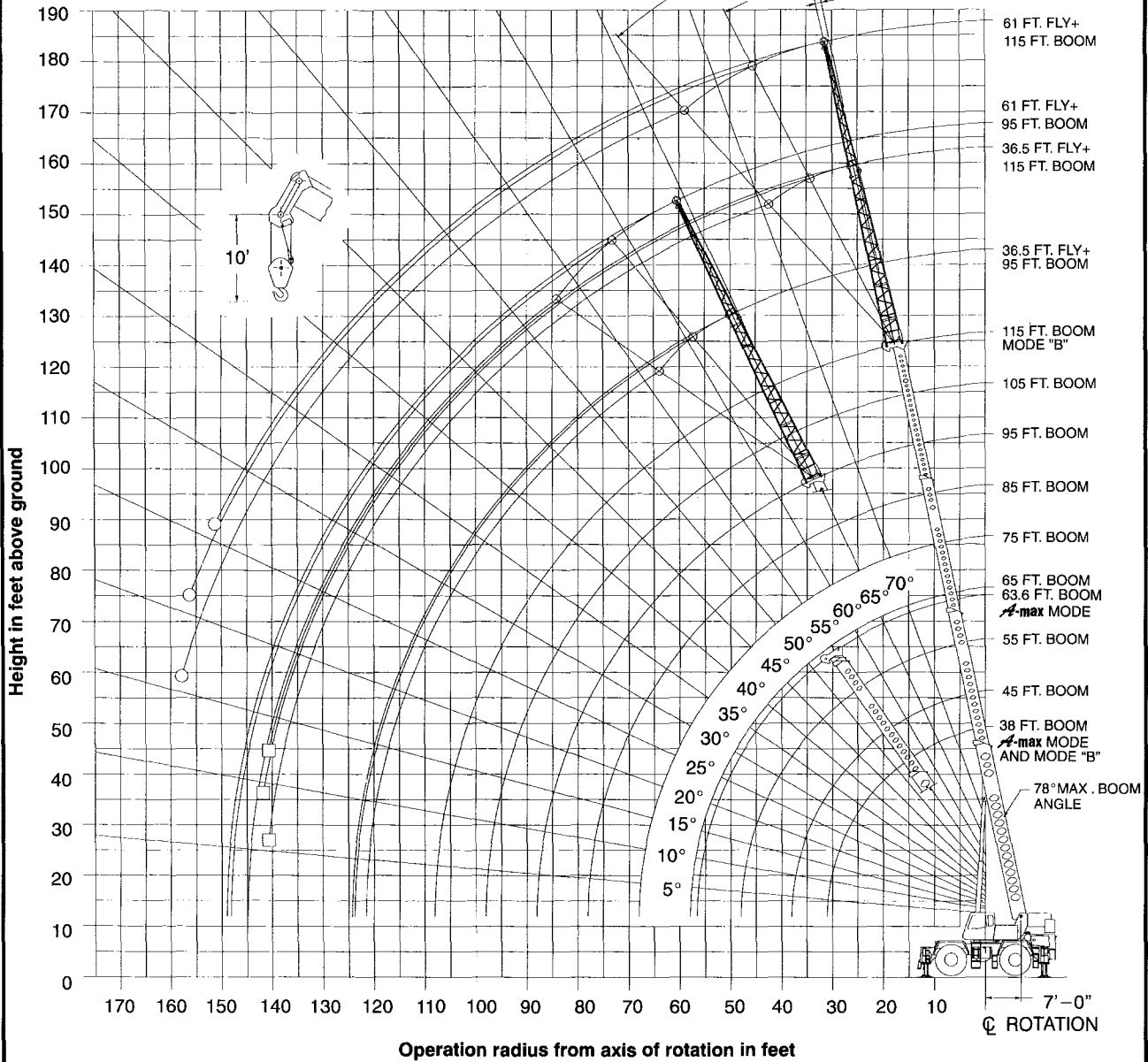
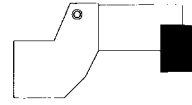
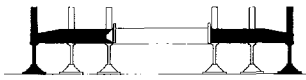
OUTRIGGER SPREAD

Position	Distance
Fully Retracted	120.75" - (10'-7.75")
Intermediate Extended	196.75" - (16'-4.75")
Fully Extended	276" - (23'-0")

WORKING RANGE DIAGRAM

Working Range Diagram
On Fully Extended Outriggers

12,000# Counterweight



- Denotes Main Boom + 61' Fly-Boom Mode "B"
- Denotes Main Boom + 36.5' Fly-Boom Mode "B"

Note: Boom and fly geometry shown are for unloaded condition and crane standing level on firm supporting surface. Boom deflection, subsequent radius and boom angle change must be accounted for when applying load to hook.

WARNING

Do Not Lower The Boom Below The Minimum Boom Angle For No Load As Shown In The Above Chart For The Boom Lengths Shown. Loss Of Stability Will Occur Causing A Tipping Condition.

Fully Extended Outriggers - Main Boom Capacities (12,000 lb. Counterweight)

Maximum Allowable Lifting Capacities Rated Lifting Capacities in Pounds On Fully Extended Outriggers See Set Up Note 2.							
12,000# COUNTERWEIGHT							
38 Ft. To 45 Ft. Main Boom							
Load Radius In Feet	Loaded Boom Angle (Deg.)	38 Ft.		45 Ft.			Load Radius In Feet
		360°	Over Front	Loaded Boom Angle (Deg.)	360°	Over Front	
10	67.0	130,000	130,000	71.0	87,400	87,400	10
12	64.0	118,000	118,000	68.5	87,400	87,400	12
15	58.5	100,700	100,700	64.0	87,400	87,400	15
20	48.5	74,200	74,200	56.5	73,500	73,500	20
25	36.5	57,400	57,400	48.0	56,800	56,800	25
30	17.5	46,100	46,100	38.0	45,600	45,600	30
35				24.5	34,600	35,500	35
Min. Boom Angle/Cap.	0°	26,300	26,300	0°	21,100	21,100	Min. Boom Angle/Cap.

Maximum Allowable Lifting Capacities Rated Lifting Capacities in Pounds On Fully Extended Outriggers See Set Up Note 2.							
12,000# COUNTERWEIGHT							
55 Ft. To 63.6 Ft. Main Boom							
Load Radius In Feet	Loaded Boom Angle (Deg.)	55 Ft.		63.6 Ft.			Load Radius In Feet
		360°	Over Front	Loaded Boom Angle (Deg.)	360°	Over Front	
10	75.0	85,600	85,600				10
12	73.0	85,600	85,600	75.5	56,300	56,300	12
15	69.5	85,600	85,600	73.0	56,300	56,300	15
20	63.5	72,800	72,800	68.0	53,000	53,000	20
25	57.5	56,200	56,200	63.0	44,900	44,900	25
30	51.0	45,000	45,000	57.5	38,700	38,700	30
35	43.0	34,000	34,900	51.5	33,600	33,900	35
40	34.5	26,300	26,900	45.5	25,900	26,600	40
45	22.0	20,900	21,400	38.0	20,600	21,100	45
50				29.0	16,600	17,000	50
55				16.0	13,500	13,900	55
Min. Boom Angle/Cap.	0°	14,800	14,800	0°	11,000	11,000	Min. Boom Angle/Cap.

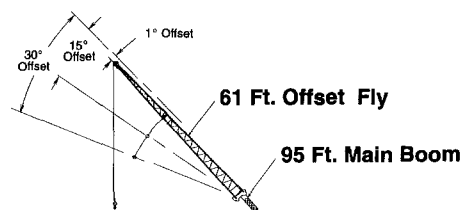
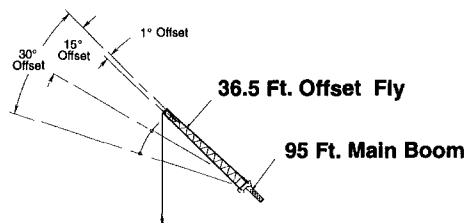
Maximum Allowable Lifting Capacities Rated Lifting Capacities in Pounds On Fully Extended Outriggers See Set Up Note 2.										
BOOM MODE "B" 12,000# COUNTERWEIGHT										
38 Ft. To 55 Ft. Main Boom										
Load Radius In Feet	Loaded Boom Angle (Deg.)	38 Ft.		45 Ft.		55 Ft.		Load Radius In Feet		
		360°	Over Front	Loaded Boom Angle (Deg.)	360°	Over Front	Loaded Boom Angle (Deg.)		360°	Over Front
10	67.0	130,000	130,000	71.0	42,000	42,000	74.5	42,000	42,000	10
12	64.0	118,000	118,000	68.0	42,000	42,000	72.5	42,000	42,000	12
15	58.5	100,700	100,700	64.0	42,000	42,000	69.0	42,000	42,000	15
20	48.5	74,200	74,200	56.5	42,000	42,000	63.5	42,000	42,000	20
25	36.5	57,400	57,400	48.0	42,000	42,000	57.5	42,000	42,000	25
30	17.5	46,100	46,100	38.0	42,000	42,000	50.5	42,000	42,000	30
35				24.5	35,900	36,700	43.0	36,500	37,300	35
40							34.0	28,600	29,300	40
45							22.0	23,100	23,600	45
Min. Boom Angle/Cap.	0°	26,300	26,300	0°	20,100	20,100	0°	14,400	14,400	Min. Boom Angle/Cap.

Maximum Allowable Lifting Capacities Rated Lifting Capacities in Pounds On Fully Extended Outriggers See Set Up Note 2.										
BOOM MODE "B" 12,000# COUNTERWEIGHT										
95 Ft. To 115 Ft. Main Boom										
Load Radius In Feet	Loaded Boom Angle (Deg.)	95 Ft.		105 Ft.		115 Ft.		Load Radius In Feet		
		360°	Over Front	Loaded Boom Angle (Deg.)	360°	Over Front	Loaded Boom Angle (Deg.)		360°	Over Front
20	76.5	38,700	38,700					20		
25	73.5	33,800	33,800	75.5	30,400	30,400	77.0	24,500	24,500	25
30	70.0	29,800	29,800	72.5	27,000	27,000	74.5	24,500	24,500	30
35	67.0	26,600	26,600	69.5	24,100	24,100	72.0	22,200	22,200	35
40	63.5	23,900	23,900	66.5	21,700	21,700	69.5	20,000	20,000	40
45	60.0	21,700	21,700	63.5	19,700	19,700	66.5	18,100	18,100	45
50	56.0	19,800	19,800	60.5	17,900	17,900	63.5	16,300	16,300	50
55	52.0	16,700	17,100	57.0	16,200	16,200	61.0	14,900	14,900	55
60	48.0	14,200	14,500	53.5	14,300	14,600	58.0	13,600	13,600	60
65	43.5	12,200	12,500	50.0	12,300	12,600	54.5	12,400	12,600	65
70	38.5	10,500	10,800	46.0	10,600	10,900	51.5	10,700	10,900	70
75	33.0	9,100	9,300	41.5	9,200	9,400	47.5	9,300	9,500	75
80	26.5	7,900	8,100	37.0	8,000	8,200	44.0	8,100	8,200	80
85	17.0	6,800	7,000	31.5	6,900	7,100	40.0	7,000	7,200	85
90				25.5	6,000	6,200	35.5	6,100	6,200	90
95				16.5	5,200	5,400	30.5	5,300	5,400	95
100							24.5	4,600	4,700	100
105							16.0	3,900	4,000	105
Min. Boom Angle/Cap.	0°	4,600	4,600	0°	3,500	3,500	0°	2,500	2,500	Min. Boom Angle/Cap.

Maximum Allowable Lifting Capacities Rated Lifting Capacities in Pounds On Fully Extended Outriggers See Set Up Note 2.										
65 Ft. To 85 Ft. Main Boom										
Load Radius In Feet	Loaded Boom Angle (Deg.)	65 Ft.		75 Ft.		85 Ft.		Load Radius In Feet		
		360°	Over Front	Loaded Boom Angle (Deg.)	360°	Over Front	Loaded Boom Angle (Deg.)		360°	Over Front
12	75.5	42,000	42,000					12		
15	73.0	42,000	42,000	75.5	42,000	42,000	77.5	42,000	42,000	15
20	68.0	42,000	42,000	71.5	42,000	42,000	74.5	42,000	42,000	20
25	63.5	42,000	42,000	68.0	42,000	42,000	71.0	41,800	41,800	25
30	58.0	42,000	42,000	63.5	42,000	42,000	67.0	37,000	37,000	30
35	52.5	36,800	37,700	59.0	37,100	38,000	63.5	32,900	32,900	35
40	46.5	28,900	29,600	54.0	29,200	29,800	59.5	29,300	29,700	40
45	39.5	23,500	24,000	49.0	23,700	24,200	55.0	23,900	24,400	45
50	31.5	19,400	19,800	43.0	19,600	20,000	50.5	19,800	20,200	50
55	20.0	16,200	16,600	37.0	16,400	16,800	46.0	16,600	17,000	55
60				29.0	13,900	14,200	40.5	14,100	14,400	60
65				19.0	11,900	12,200	34.5	12,100	12,400	65
70							27.5	10,400	10,700	70
75							18.0	9,000	9,200	75
Min. Boom Angle/Cap.	0°	10,700	10,700	0°	8,000	8,000	0°	6,100	6,100	Min. Boom Angle/Cap.

Note: Refer To Page 5 For "Lifting Capacity Deductions" For Capacity Reductions Caused By Stowed Or Erected Auxiliary Load Handling Equipment.

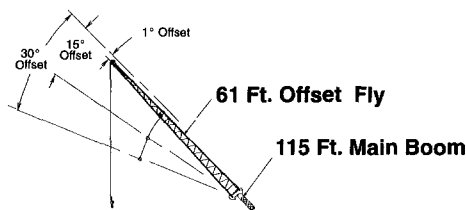
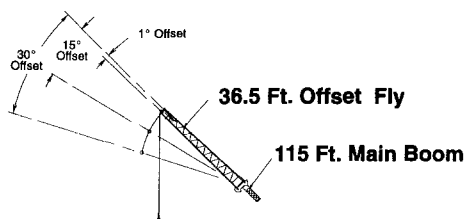
Fully Extended Outriggers - Fly Capacities - Boom Mode "B" (12,000 lb. Counterweight)



BOOM MODE "B" 12,000# COUNTERWEIGHT							
Maximum Allowable Lifting Capacities Rated Lifting Capacities In Pounds On Fully Extended Outriggers See Set Up Note 2.							
95 Ft. Main Boom + 36.5 Ft. Offset Fly							
Load Radius In Feet	1° Offset		15° Offset		30° Offset		Load Radius In Feet
	Loaded Boom Angle (Deg.)	360°	Loaded Boom Angle (Deg.)	360°	Loaded Boom Angle (Deg.)	360°	
30	76.5	16,900					30
35	74.0	15,700	78.0°	11,900			35
40	72.0	14,800	75.5	11,300			40
45	70.0	13,700	73.5	10,700	77.0	8,700	45
50	67.5	12,800	71.0	10,300	74.5	8,300	50
55	65.0	12,100	68.5	9,800	72.0	8,000	55
60	62.5	11,400	66.0	9,400	69.5	7,700	60
65	60.0	10,800	63.5	8,900	67.0	7,400	65
70	57.5	10,300	61.0	8,500	64.5	7,200	70
75	55.0	9,800	58.5	8,100	61.5	6,900	75
80	52.0	9,300	55.5	7,800	58.5	6,700	80
85	49.0	8,200	52.5	7,400	55.5	6,600	85
90	46.0	7,300	49.5	7,200	52.5	6,400	90
95	42.5	6,500	46.5	6,800	49.0	6,300	95
100	39.0	5,700	42.5	6,100	45.5	6,100	100
105	35.0	5,100	38.5	5,400	41.0	5,600	105
110	30.5	4,500	34.0	4,700	36.0	4,900	110
115	25.0	4,000	28.5	4,100	30.0	4,200	115
120	18.0	3,500	21.5	3,600	21.0	3,600	120
Min. Boom Angle/Cap.	0°	1,700	0°	1,700	0°	1,800	Min. Boom Angle/Cap.

BOOM MODE "B" 12,000# COUNTERWEIGHT							
Maximum Allowable Lifting Capacities Rated Lifting Capacities In Pounds On Fully Extended Outriggers See Set Up Note 2.							
95 Ft. Main Boom + 61 Ft. Offset Fly							
Load Radius In Feet	1° Offset		15° Offset		30° Offset		Load Radius In Feet
	Loaded Boom Angle (Deg.)	360°	Loaded Boom Angle (Deg.)	360°	Loaded Boom Angle (Deg.)	360°	
35	77.5	9,500					35
40	76.0	9,500					40
45	74.0	9,000					45
50	72.0	8,400	77.0	6,200			50
55	70.0	7,800	75.5	5,900			55
60	68.5	7,300	73.5	5,600			60
65	66.5	6,800	71.5	5,300	76.5	4,300	65
70	64.0	6,300	69.5	5,000	74.5	4,100	70
75	62.0	6,000	67.5	4,800	72.5	4,000	75
80	60.0	5,600	65.0	4,600	70.0	3,800	80
85	58.0	5,300	63.0	4,400	68.0	3,700	85
90	55.5	5,000	60.5	4,200	65.5	3,600	90
95	53.5	4,800	58.5	4,000	63.0	3,500	95
100	51.0	4,500	56.0	3,900	60.5	3,400	100
105	48.5	4,300	53.5	3,700	58.0	3,300	105
110	45.5	4,100	51.0	3,600	55.0	3,200	110
115	43.0	3,900	48.0	3,500	52.0	3,100	115
120	40.0	3,700	45.0	3,300	49.0	3,100	120
125	37.0	3,600	41.5	3,200	45.5	3,000	125
130	33.0	3,200	38.0	3,200	41.5	3,000	130
135	29.0	2,900	34.0	3,100	37.0	3,000	135
140	24.0	2,500	29.0	2,700	31.0	2,800	140
145	18.0	2,200	22.0	2,300			145
Min. Boom Angle/Cap.	0°	700	0°	700	0°	800	Min. Boom Angle/Cap.

* This capacity based on maximum obtainable boom angle.



BOOM MODE "B" 12,000# COUNTERWEIGHT							
Maximum Allowable Lifting Capacities Rated Lifting Capacities In Pounds On Fully Extended Outriggers See Set Up Note 2.							
115 Ft. Main Boom + 36.5 Ft. Offset Fly							
Load Radius In Feet	1° Offset		15° Offset		30° Offset		Load Radius In Feet
	Loaded Boom Angle (Deg.)	360°	Loaded Boom Angle (Deg.)	360°	Loaded Boom Angle (Deg.)	360°	
35	76.5	10,500					35
40	75.0	10,500					40
45	73.0	10,500	76.5	10,100			45
50	71.5	10,500	75.0	10,100	78.0°	8,700	50
55	69.5	10,500	73.0	10,100	76.0	8,400	55
60	67.5	10,500	71.0	10,100	74.0	8,100	60
65	66.0	10,300	69.0	9,700	71.5	7,800	65
70	63.5	9,500	67.0	9,300	69.5	7,600	70
75	61.5	8,700	65.0	8,900	67.5	7,400	75
80	59.0	8,100	62.5	8,200	65.0	7,100	80
85	57.0	7,400	60.0	7,600	63.0	7,000	85
90	54.5	6,900	57.5	7,000	60.5	6,800	90
95	52.0	6,200	55.0	6,500	58.0	6,600	95
100	49.0	5,500	52.5	5,900	55.5	6,100	100
105	46.0	4,800	49.5	5,200	52.5	5,500	105
110	43.0	4,200	46.5	4,600	49.0	4,800	110
115	40.0	3,700	43.5	4,000	46.0	4,200	115
120	36.5	3,200	40.0	3,500	42.0	3,700	120
125	33.0	2,800	36.0	3,000	38.0	3,100	125
130	29.0	2,400	32.0	2,600	33.5	2,700	130
135	24.0	2,000	27.0	2,200	28.0	2,200	135
140	17.5	1,700	20.5	1,800	19.0	1,800	140

BOOM MODE "B" 12,000# COUNTERWEIGHT							
Maximum Allowable Lifting Capacities Rated Lifting Capacities In Pounds On Fully Extended Outriggers See Set Up Note 2.							
115 Ft. Main Boom + 61 Ft. Offset Fly							
Load Radius In Feet	1° Offset		15° Offset		30° Offset		Load Radius In Feet
	Loaded Boom Angle (Deg.)	360°	Loaded Boom Angle (Deg.)	360°	Loaded Boom Angle (Deg.)	360°	
40	77.5	7,100					40
45	76.0	7,100					45
50	74.5	7,100					50
55	73.0	7,100					55
60	71.5	7,100	76.5	6,000			60
65	70.0	7,100	75.0	5,700			65
70	68.5	7,100	73.5	5,400	77.5	4,300	70
75	67.0	6,700	71.5	5,200	76.0	4,200	75
80	65.5	6,300	69.5	4,900	74.0	4,000	80
85	63.5	6,000	68.0	4,700	72.0	3,900	85
90	62.0	5,700	66.0	4,500	70.5	3,800	90
95	60.0	5,400	64.5	4,400	68.5	3,700	95
100	58.0	5,100	62.5	4,200	66.5	3,600	100
105	56.0	4,800	60.5	4,100	64.5	3,500	105
110	53.5	4,400	58.0	3,900	62.5	3,400	110
115	51.5	4,100	56.0	3,800	60.0	3,300	115
120	49.0	3,700	54.0	3,700	57.5	3,200	120
125	46.5	3,300	51.5	3,500	55.5	3,200	125
130	44.0	2,900	49.0	3,200	52.5	3,100	130
135	41.5	2,500	46.0	2,900	50.0	3,000	135
140	38.5	2,200	43.0	2,500	47.0	2,700	140
145	35.5	1,800	40.0	2,100	43.5	2,400	145
150	32.0	1,600	36.5	1,800	39.5	2,000	150
155	28.0	1,300	32.5	1,500	34.5	1,600	155

WARNING
Do Not Lower 36.5 Ft. Offset Fly in Working Position Below 12.5 Degrees Unless Main Boom Length is 112 Ft. Or Less, Since Loss Of Stability Will Occur Causing A Tipping Condition.

* This capacity based on maximum obtainable boom angle.

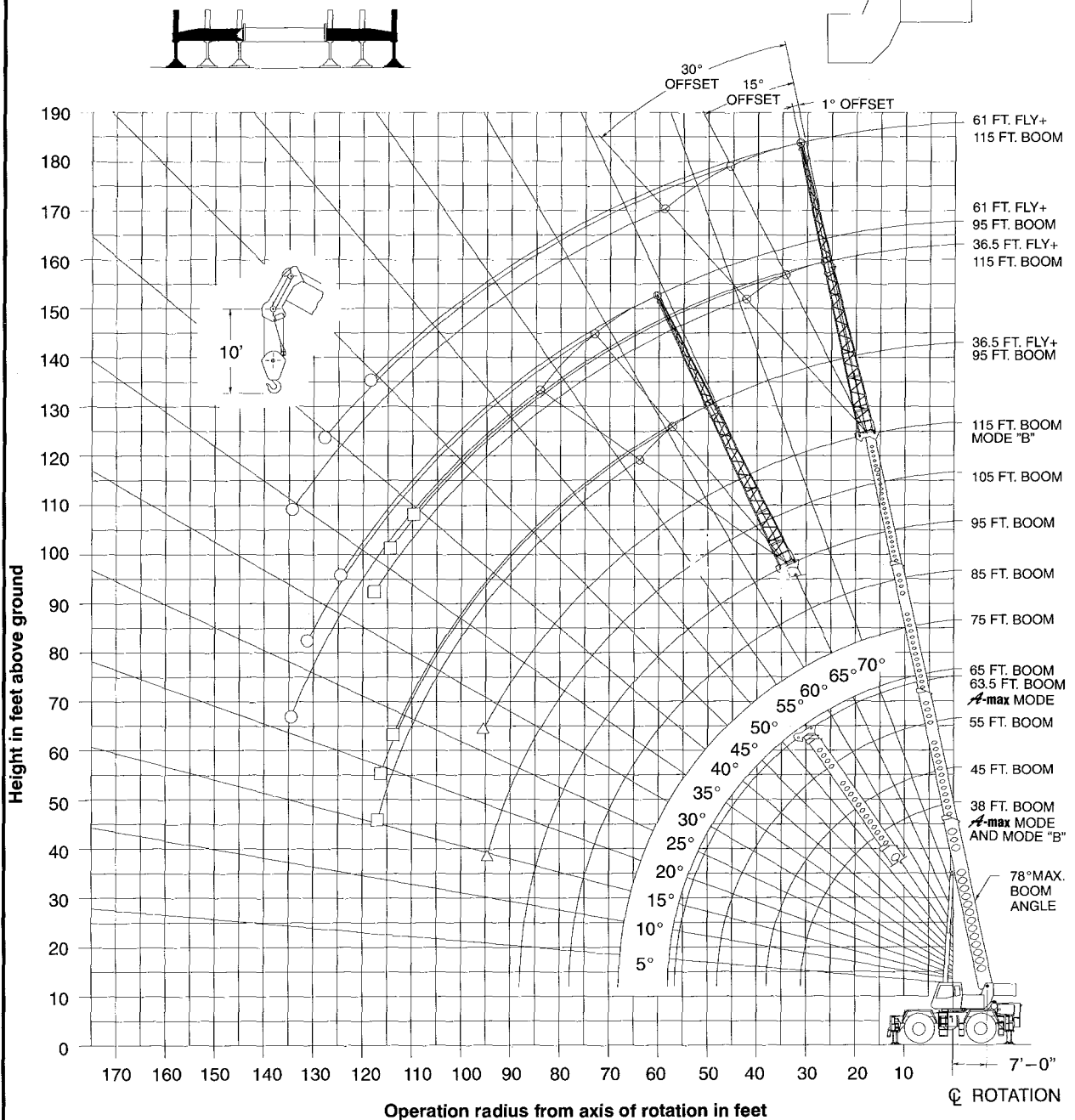
WARNING
Do Not Lower 61 Ft. Offset Fly in Working Position Below 26.0 Degrees Unless Main Boom Length is 102 Ft. Or Less, Since Loss Of Stability Will Occur Causing A Tipping Condition.

Note: Refer To Page 5 For "Lifting Capacity Deductions" For Capacity Reductions Caused By Stowed Or Erected Auxiliary Load Handling Equipment.

WORKING RANGE DIAGRAM

**Working Range Diagram
On Fully Extended Outriggers**

0# Counterweight



- Denotes Main Boom + 61' Fly - Boom Mode "B"
- Denotes Main Boom + 36.5' Fly - Boom Mode "B"
- △ Denotes Main Boom - Boom Mode "B"

Note: Boom and fly geometry shown are for unloaded condition and crane standing level on firm supporting surface. Boom deflection, subsequent radius and boom angle change must be accounted for when applying load to hook.



WARNING

Do Not Lower The Boom Below The Minimum Boom Angle For No Load As Shown In The Above Chart For The Boom Lengths Shown. Loss Of Stability Will Occur Causing A Tipping Condition.

Fully Extended Outriggers - Main Boom Capacities (0 lb. Counterweight)

Maximum Allowable Lifting Capacities Rated Lifting Capacities In Pounds On Fully Extended Outriggers See Set Up Note 2.							
A-max Mode 0# COUNTERWEIGHT							
38 Ft. To 45 Ft. Main Boom							
Load Radius In Feet	38 Ft.			45 Ft.			Load Radius In Feet
	Loaded Boom Angle (Deg.)	360°	Over Front	Loaded Boom Angle (Deg.)	360°	Over Front	
10	67.0	129,000	130,000	71.0	87,400	87,400	10
12	64.0	115,400	115,500	68.5	87,400	87,400	12
15	58.5	91,900	91,900	64.0	87,400	87,400	15
20	48.5	66,700	66,700	56.5	66,100	66,100	20
25	36.5	49,800	51,400	48.0	49,000	50,600	25
30	17.5	33,800	34,800	38.0	33,200	34,100	30
35				24.5	24,100	24,800	35
Min. Boom Angle/Cap.	0°	26,300	26,300	0°	20,200	20,700	Min. Boom Angle/Cap.

Maximum Allowable Lifting Capacities Rated Lifting Capacities In Pounds On Fully Extended Outriggers See Set Up Note 2.							
A-max Mode 0# COUNTERWEIGHT							
55 Ft. To 63.6 Ft. Main Boom							
Load Radius In Feet	55 Ft.			63.6 Ft.			Load Radius In Feet
	Loaded Boom Angle (Deg.)	360°	Over Front	Loaded Boom Angle (Deg.)	360°	Over Front	
10	75.0	85,600	85,600				10
12	73.0	85,600	85,600	75.5	56,300	56,300	12
15	69.5	85,600	85,600	73.0	56,300	56,300	15
20	63.5	65,400	65,400	68.0	53,000	53,000	20
25	57.5	48,100	49,700	63.0	44,900	44,900	25
30	50.5	32,500	33,400	57.5	32,000	33,000	30
35	43.0	23,500	24,200	51.5	23,200	23,800	35
40	34.0	17,700	18,200	45.0	17,300	17,800	40
45	22.0	13,600	13,900	38.0	13,200	13,600	45
50				29.0	10,300	10,600	50
55				15.5	7,900	8,100	55
Min. Boom Angle/Cap.	0°	11,500	11,900	0°	7,200	7,400	Min. Boom Angle/Cap.

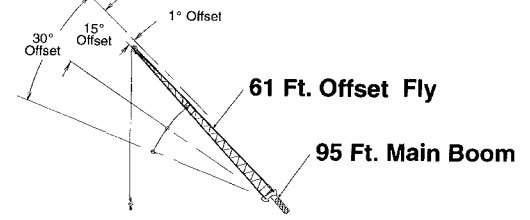
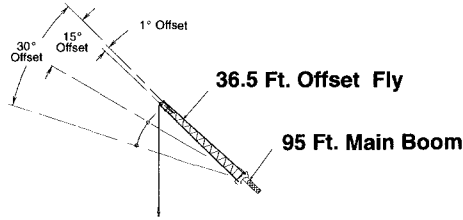
Maximum Allowable Lifting Capacities Rated Lifting Capacities In Pounds On Fully Extended Outriggers See Set Up Note 2.										
BOOM MODE "B" 0# COUNTERWEIGHT										
38 Ft. To 55 Ft. Main Boom										
Load Radius In Feet	38 Ft.			45 Ft.			55 Ft.			Load Radius In Feet
	Loaded Boom Angle (Deg.)	360°	Over Front	Loaded Boom Angle (Deg.)	360°	Over Front	Loaded Boom Angle (Deg.)	360°	Over Front	
10	67.0	129,000	130,000	71.0	42,000	42,000	74.5	42,000	42,000	10
12	64.0	115,400	115,500	68.0	42,000	42,000	72.5	42,000	42,000	12
15	58.5	91,900	91,900	64.0	42,000	42,000	69.0	42,000	42,000	15
20	48.5	66,700	66,700	56.5	42,000	42,000	63.5	42,000	42,000	20
25	36.5	49,800	51,400	48.0	42,000	42,000	57.5	42,000	42,000	25
30	17.5	33,800	34,800	38.0	34,800	35,500	50.5	35,200	36,200	30
35				24.5	25,400	26,000	43.0	26,000	26,800	35
40							34.0	20,000	20,500	40
45							22.0	15,700	16,100	45
Min. Boom Angle/Cap.	0°	26,300	26,300	0°	20,100	20,100	0°	13,700	14,000	Min. Boom Angle/Cap.

Maximum Allowable Lifting Capacities Rated Lifting Capacities In Pounds On Fully Extended Outriggers See Set Up Note 2.										
BOOM MODE "B" 0# COUNTERWEIGHT										
95 Ft. To 115 Ft. Main Boom										
Load Radius In Feet	95 Ft.			105 Ft.			115 Ft.			Load Radius In Feet
	Loaded Boom Angle (Deg.)	360°	Over Front	Loaded Boom Angle (Deg.)	360°	Over Front	Loaded Boom Angle (Deg.)	360°	Over Front	
20	76.5	38,700	38,700							20
25	73.5	33,800	33,800	75.5	30,400	30,400	77.0	24,500	24,500	25
30	70.0	29,800	29,800	72.5	27,000	27,000	74.5	24,500	24,500	30
35	67.0	26,600	26,600	69.5	24,100	24,100	72.0	22,200	22,200	35
40	63.0	20,900	21,400	66.5	21,000	21,500	69.5	20,000	20,000	40
45	59.5	16,600	17,000	63.5	16,700	17,100	66.5	16,800	17,200	45
50	55.5	13,500	13,800	60.0	13,600	13,900	63.5	13,600	13,900	50
55	52.0	11,100	11,400	56.5	11,200	11,500	60.5	11,300	11,600	55
60	47.5	9,200	9,400	53.0	9,300	9,500	57.0	9,400	9,600	60
65	43.0	7,600	7,800	49.5	7,700	7,900	54.0	7,800	8,000	65
70	38.0	6,300	6,500	45.5	6,400	6,600	50.5	6,500	6,700	70
75	32.5	5,200	5,400	41.0	5,300	5,500	47.0	5,400	5,500	75
80	26.0	4,300	4,400	36.5	4,400	4,500	43.5	4,500	4,600	80
85	16.5	3,500	3,600	31.0	3,600	3,700	39.5	3,600	3,800	85
90				25.0	2,900	3,000	35.0	2,900	3,100	90
95				16.0	2,200	2,400	30.0	2,300	2,400	95
Min. Boom Angle/Cap.	0°	3,000	3,200	14.5°			27°			Min. Boom Angle/Cap.

Maximum Allowable Lifting Capacities Rated Lifting Capacities In Pounds On Fully Extended Outriggers See Set Up Note 2.										
BOOM MODE "B" 0# COUNTERWEIGHT										
65 Ft. To 85 Ft. Main Boom										
Load Radius In Feet	65 Ft.			75 Ft.			85 Ft.			Load Radius In Feet
	Loaded Boom Angle (Deg.)	360°	Over Front	Loaded Boom Angle (Deg.)	360°	Over Front	Loaded Boom Angle (Deg.)	360°	Over Front	
12	75.5	42,000	42,000							12
15	73.0	42,000	42,000	75.5	42,000	42,000	77.5	42,000	42,000	15
20	68.0	42,000	42,000	71.5	42,000	42,000	74.5	42,000	42,000	20
25	63.5	42,000	42,000	67.5	42,000	42,000	71.0	41,800	41,800	25
30	58.0	35,600	36,600	63.0	35,900	36,900	67.0	36,100	37,000	30
35	52.5	26,300	27,000	58.5	26,600	27,200	63.0	26,700	27,400	35
40	46.0	20,300	20,800	53.5	20,600	21,100	59.0	20,800	21,300	40
45	39.5	16,100	16,500	48.5	16,300	16,700	55.0	16,500	16,900	45
50	31.0	13,000	13,300	43.0	13,200	13,500	50.5	13,400	13,700	50
55	20.0	10,600	10,800	36.5	10,800	11,100	45.5	11,000	11,300	55
60				29.0	8,900	9,100	40.5	9,100	9,300	60
65				18.5	7,300	7,500	34.5	7,500	7,700	65
70							27.5	6,200	6,400	70
75							17.5	5,100	5,300	75
Min. Boom Angle/Cap.	0°	9,300	9,600	0°	6,500	6,700	0°	4,500	4,600	Min. Boom Angle/Cap.

Note: Refer To Page 5 For "Lifting Capacity Deductions" For Capacity Reductions Caused By Stowed Or Erected Auxiliary Load Handling Equipment.

Fully Extended Outriggers - Fly Capacities - Boom Mode "B" (0 lb. Counterweight)



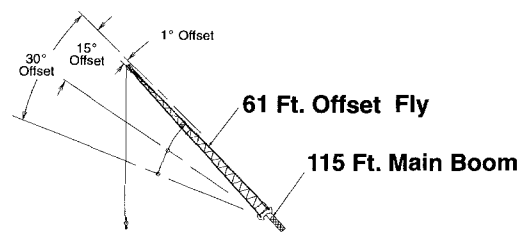
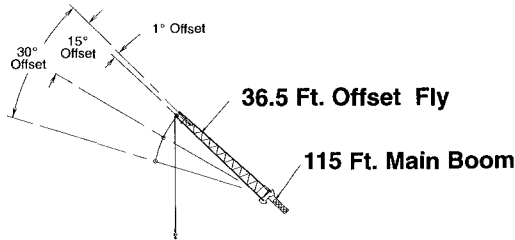
BOOM MODE "B" 0# COUNTERWEIGHT							
Maximum Allowable Lifting Capacities Rated Lifting Capacities In Pounds On Fully Extended Outriggers See Set Up Note 2.							
95 Ft. Main Boom + 36.5 Ft. Offset Fly							
Load Radius In Feet	1° Offset		15° Offset		30° Offset		Load Radius In Feet
	Loaded Boom Angle (Deg.)	360°	Loaded Boom Angle (Deg.)	360°	Loaded Boom Angle (Deg.)	360°	
30	76.5	16,900					30
35	74.0	15,700	78.0°	11,900			35
40	72.0	14,600	75.5	11,300			40
45	70.0	13,700	73.5	10,700	77.0	8,700	45
50	67.5	12,800	71.0	10,300	74.5	8,300	50
55	65.0	12,100	68.5	9,800	72.0	8,000	55
60	62.5	10,800	66.0	9,400	69.5	7,700	60
65	60.0	9,200	63.5	8,900	67.0	7,400	65
70	57.0	7,800	61.0	8,500	64.5	7,200	70
75	54.0	6,700	58.0	7,300	61.5	6,900	75
80	51.5	5,700	56.0	6,300	58.5	6,700	80
85	48.0	4,900	52.0	5,400	55.5	5,800	85
90	45.0	4,200	49.0	4,600	52.0	5,000	90
95	41.5	3,500	45.5	3,900	48.5	4,200	95
100	38.0	2,900	41.5	3,300	44.5	3,500	100
105	34.0	2,400	37.5	2,700	40.0	2,900	105
110	29.5	2,000	33.0	2,200	35.0	2,400	110
115	24.5	1,600	28.0	1,800	29.0	1,800	115

WARNING
Do Not Lower 36.5 Ft. Offset Fly In Working Position Below 23 Degrees Unless Main Boom Length is 86 Ft. Or Less, Since Loss Of Stability Will Occur Causing A Tipping Condition.

* This capacity based on maximum obtainable boom angle.

BOOM MODE "B" 0# COUNTERWEIGHT							
Maximum Allowable Lifting Capacities Rated Lifting Capacities In Pounds On Fully Extended Outriggers See Set Up Note 2.							
95 Ft. Main Boom + 61 Ft. Offset Fly							
Load Radius In Feet	1° Offset		15° Offset		30° Offset		Load Radius In Feet
	Loaded Boom Angle (Deg.)	360°	Loaded Boom Angle (Deg.)	360°	Loaded Boom Angle (Deg.)	360°	
35	77.5	9,500					35
40	76.0	9,500					40
45	74.0	9,000					45
50	72.0	8,400	77.0	6,200			50
55	70.0	7,800	75.5	5,800			55
60	68.5	7,300	73.5	5,600			60
65	66.5	6,800	71.5	5,300	76.5	4,300	65
70	64.0	6,300	69.5	5,000	74.5	4,100	70
75	62.0	6,000	67.5	4,800	72.5	4,000	75
80	60.0	5,600	65.0	4,600	70.0	3,800	80
85	58.0	5,300	63.0	4,400	68.0	3,700	85
90	55.5	4,800	60.5	4,200	65.5	3,600	90
95	53.0	4,200	58.5	4,000	63.0	3,500	95
100	50.5	3,600	56.0	3,900	60.5	3,400	100
105	48.0	3,100	53.5	3,700	58.0	3,300	105
110	45.0	2,600	50.5	3,100	55.0	3,200	110
115	42.0	2,200	47.5	2,700	52.0	3,100	115
120	39.0	1,800	44.5	2,200	49.0	2,600	120
125	36.0	1,500	41.0	1,800	45.0	2,100	125
130			37.5	1,500	41.0	1,700	130
135					36.0	1,300	135

WARNING
Do Not Lower 61 Ft. Offset Fly In Working Position Below 32.5 Degrees Unless Main Boom Length Is 78 Ft. Or Less, Since Loss Of Stability Will Occur Causing A Tipping Condition.



BOOM MODE "B" 0# COUNTERWEIGHT							
Maximum Allowable Lifting Capacities Rated Lifting Capacities In Pounds On Fully Extended Outriggers See Set Up Note 2.							
115 Ft. Main Boom + 36.5 Ft. Offset Fly							
Load Radius In Feet	1° Offset		15° Offset		30° Offset		Load Radius In Feet
	Loaded Boom Angle (Deg.)	360°	Loaded Boom Angle (Deg.)	360°	Loaded Boom Angle (Deg.)	360°	
35	76.5	10,500					35
40	75.0	10,500					40
45	73.0	10,500	76.5	10,100			45
50	71.5	10,500	75.0	10,100	78.0°	8,700	50
55	69.5	10,500	73.0	10,100	76.0	8,400	55
60	67.5	10,500	71.0	10,100	74.0	8,100	60
65	65.5	8,900	69.0	9,700	71.5	7,800	65
70	63.0	7,500	66.5	8,300	69.5	7,600	70
75	60.5	6,400	64.5	7,100	67.5	7,400	75
80	58.5	5,400	62.0	6,100	65.0	6,700	80
85	56.0	4,600	59.5	5,200	62.5	5,700	85
90	53.5	3,900	56.5	4,400	60.0	4,900	90
95	50.5	3,200	54.0	3,700	57.0	4,100	95
100	48.0	2,700	51.5	3,100	54.0	3,500	100
105	45.0	2,200	48.5	2,600	51.0	2,900	105
110	42.0	1,700	45.5	2,100	48.0	2,300	110
115			42.5	1,600	44.5	1,800	115

WARNING
Do Not Lower 36.5 Ft. Offset Fly In Working Position Below 39.5 Degrees Unless Main Boom Length Is 86 Ft. Or Less, Since Loss Of Stability Will Occur Causing A Tipping Condition.

* This capacity based on maximum obtainable boom angle.

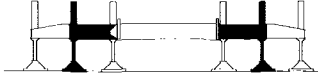
BOOM MODE "B" 0# COUNTERWEIGHT							
Maximum Allowable Lifting Capacities Rated Lifting Capacities In Pounds On Fully Extended Outriggers See Set Up Note 2.							
115 Ft. Main Boom + 61 Ft. Offset Fly							
Load Radius In Feet	1° Offset		15° Offset		30° Offset		Load Radius In Feet
	Loaded Boom Angle (Deg.)	360°	Loaded Boom Angle (Deg.)	360°	Loaded Boom Angle (Deg.)	360°	
40	77.5	7,100					40
45	76.0	7,100					45
50	74.5	7,100					50
55	73.0	7,100					55
60	71.5	7,100	76.5	6,000			60
65	70.0	7,100	75.0	5,700			65
70	68.5	7,100	73.5	5,400	77.5	4,300	70
75	67.0	6,700	71.5	5,200	76.0	4,200	75
80	65.5	6,100	69.5	4,900	74.0	4,000	80
85	63.5	5,200	68.0	4,700	72.0	3,900	85
90	61.0	4,500	66.0	4,500	70.5	3,800	90
95	59.0	3,800	64.5	4,400	68.5	3,700	95
100	57.0	3,200	62.0	3,900	66.5	3,600	100
105	54.5	2,700	60.0	3,400	64.5	3,500	105
110	52.5	2,300	57.5	2,900	62.5	3,400	110
115	50.0	1,800	55.0	2,400	60.0	2,900	115
120	48.0	1,500	53.0	2,000	57.0	2,400	120
125			50.5	1,600	54.5	2,000	125
130					51.5	1,600	130

WARNING
Do Not Lower 61 Ft. Offset Fly In Working Position Below 44.5 Degrees Unless Main Boom Length Is 78 Ft. Or Less, Since Loss Of Stability Will Occur Causing A Tipping Condition.

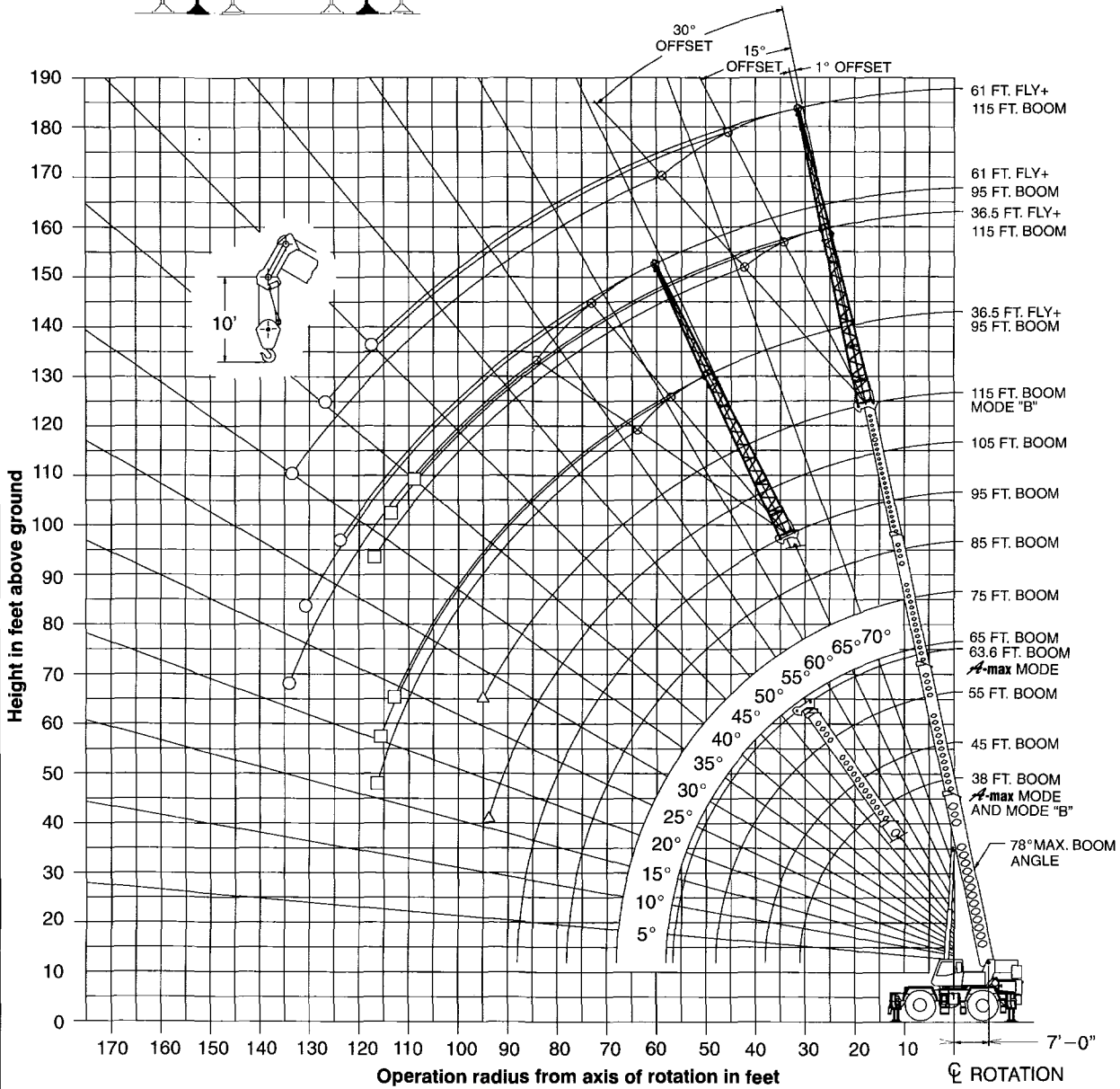
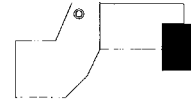
Note: Refer To Page 5 For "Lifting Capacity Deductions" For Capacity Reductions Caused By Stowed Or Erected Auxiliary Load Handling Equipment.

WORKING RANGE DIAGRAM

Working Range Diagram On Intermediate Extended Outriggers



12,000# Counterweight



- Denotes Main Boom + 61' Fly - Boom Mode "B"
- Denotes Main Boom + 36.5' Fly - Boom Mode "B"
- △ Denotes Main Boom - Boom Mode "B"

Note: Boom and fly geometry shown are for unloaded condition and crane standing level on firm supporting surface. Boom deflection, subsequent radius and boom angle change must be accounted for when applying load to hook.



WARNING

Do Not Lower The Boom Below The Minimum Boom Angle For No Load As Shown In The Above Chart For The Boom Lengths Shown. Loss Of Stability Will Occur Causing A Tipping Condition.

Intermediate Extended Outriggers - Main Boom Capacities (12,000 lb. counterweight)

Maximum Allowable Lifting Capacities Rated Lifting Capacities In Pounds On Intermediate Extended Outriggers See Set Up Note 2.					
38 Ft. To 45 Ft. Main Boom					
Load Radius In Feet	38 Ft.		45 Ft.		Load Radius In Feet
	Loaded Boom Angle (Deg.)	360°	Loaded Boom Angle (Deg.)	360°	
10	67.0	119,500	71.0	87,400	10
12	64.0	105,800	68.5	87,400	12
15	58.5	89,900	64.0	87,400	15
20	48.5	60,000	56.5	59,200	20
25	36.5	39,500	48.0	38,800	25
30	17.5	28,300	38.0	27,800	30
35			24.5	20,800	35
Min. Boom Angle/Cap.	0°	26,300	0°	17,600	Min. Boom Angle/Cap.

Maximum Allowable Lifting Capacities Rated Lifting Capacities In Pounds On Intermediate Extended Outriggers See Set Up Note 2.					
55 Ft. To 63.6 Ft. Main Boom					
Load Radius In Feet	55 Ft.		63.6 Ft.		Load Radius In Feet
	Loaded Boom Angle (Deg.)	360°	Loaded Boom Angle (Deg.)	360°	
10	75.0	85,600			10
12	73.0	85,600	75.5	56,300	12
15	69.5	85,600	73.0	56,300	15
20	63.5	58,300	68.0	53,000	20
25	57.5	38,100	62.5	37,700	25
30	50.5	27,100	57.0	26,800	30
35	43.0	20,300	51.5	19,900	35
40	34.0	15,600	45.0	15,200	40
45	22.0	12,100	38.0	11,900	45
50			29.0	9,200	50
55			15.5	7,100	55
Min. Boom Angle/Cap.	0°	10,400	0°	6,500	Min. Boom Angle/Cap.

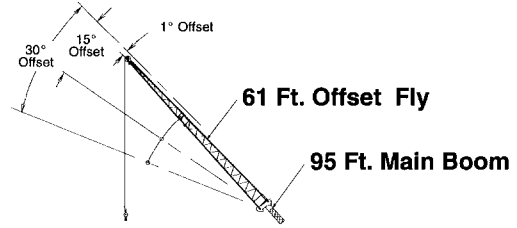
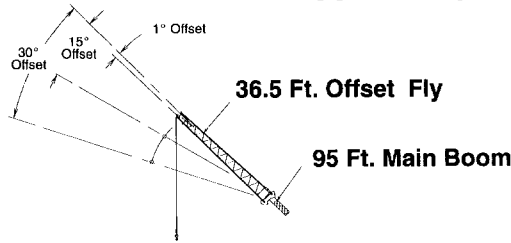
Maximum Allowable Lifting Capacities Rated Lifting Capacities In Pounds On Intermediate Extended Outriggers See Set Up Note 2.							
BOOM MODE "B" 12,000# COUNTERWEIGHT							
38 Ft. To 55 Ft. Main Boom							
Load Radius In Feet	38 Ft.		45 Ft.		55 Ft.		Load Radius In Feet
	Loaded Boom Angle (Deg.)	360°	Loaded Boom Angle (Deg.)	360°	Loaded Boom Angle (Deg.)	360°	
10	67.0	119,500	71.0	42,000	74.5	42,000	10
12	64.0	105,800	68.0	42,000	72.5	42,000	12
15	58.5	89,900	64.0	42,000	69.0	42,000	15
20	48.5	60,000	56.5	42,000	63.5	42,000	20
25	36.5	39,500	48.0	40,100	57.0	40,600	25
30	17.5	28,300	38.0	28,900	50.5	29,500	30
35			24.5	21,900	43.0	22,500	35
40					34.0	17,600	40
45					22.0	14,100	45
Min. Boom Angle/Cap.	0°	26,300	0°	18,700	0°	12,300	Min. Boom Angle/Cap.

Maximum Allowable Lifting Capacities Rated Lifting Capacities In Pounds On Intermediate Extended Outriggers See Set Up Note 2.							
BOOM MODE "B" 12,000# COUNTERWEIGHT							
95 Ft. To 115 Ft. Main Boom							
Load Radius In Feet	95 Ft.		105 Ft.		115 Ft.		Load Radius In Feet
	Loaded Boom Angle (Deg.)	360°	Loaded Boom Angle (Deg.)	360°	Loaded Boom Angle (Deg.)	360°	
20	76.5	38,700					20
25	73.5	33,800	75.5	30,400	77.0	24,500	25
30	70.0	29,800	72.5	27,000	74.5	24,500	30
35	66.5	23,300	69.5	23,400	72.0	22,200	35
40	63.0	18,400	66.5	18,500	69.0	18,600	40
45	59.5	14,900	63.0	15,000	66.0	15,000	45
50	55.5	12,300	60.0	12,400	63.0	12,400	50
55	51.5	10,100	56.5	10,200	60.0	10,300	55
60	47.5	8,400	53.0	8,500	57.0	8,600	60
65	43.0	7,000	49.0	7,100	54.0	7,200	65
70	38.0	5,800	45.5	5,900	50.5	6,000	70
75	32.5	4,800	41.0	4,900	47.0	5,000	75
80	26.0	4,000	36.5	4,000	43.5	4,100	80
85	16.5	3,200	31.0	3,300	39.5	3,400	85
90			25.0	2,600	35.0	2,700	90
95					30.0	2,100	95
Min. Boom Angle/Cap.	0°	2,800	16.0°		27.5°		Min. Boom Angle/Cap.

Maximum Allowable Lifting Capacities Rated Lifting Capacities In Pounds On Intermediate Extended Outriggers See Set Up Note 2.							
65 Ft. To 85 Ft. Main Boom							
Load Radius In Feet	65 Ft.		75 Ft.		85 Ft.		Load Radius In Feet
	Loaded Boom Angle (Deg.)	360°	Loaded Boom Angle (Deg.)	360°	Loaded Boom Angle (Deg.)	360°	
12	75.5	42,000					12
15	73.0	42,000	75.5	42,000	77.5	42,000	15
20	68.0	42,000	71.5	42,900	74.5	42,000	20
25	63.0	41,000	67.5	41,200	71.0	41,400	25
30	58.0	29,800	63.0	30,000	67.0	30,200	30
35	52.5	22,800	58.5	23,000	63.0	23,200	35
40	46.0	17,900	53.5	18,200	59.0	18,300	40
45	39.5	14,400	48.5	14,600	54.5	14,800	45
50	31.0	11,800	43.0	12,000	50.5	12,100	50
55	20.0	9,600	36.5	9,900	45.5	10,000	55
60			29.0	8,200	40.5	8,300	60
65			18.5	6,700	34.5	6,900	65
70					27.5	5,700	70
75					17.5	4,700	75
Min. Boom Angle/Cap.	0°	8,500	0°	6,000	0°	4,200	Min. Boom Angle/Cap.

Note: Refer To Page 5 For "Lifting Capacity Deductions" For Capacity Reductions Caused By Stowed Or Erected Auxiliary Load Handling Equipment.

Intermediate Extended Outriggers - Fly Capacities - Boom Mode "B" (12,000 lb. Counterweight)

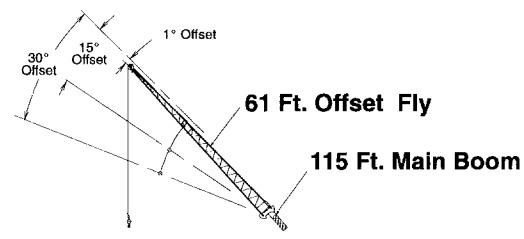
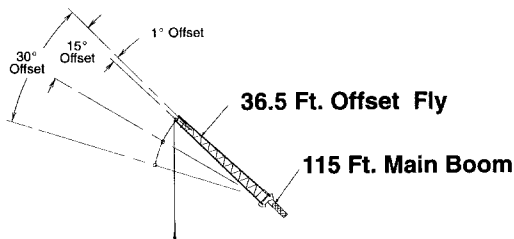


BOOM MODE "B" 12,000# COUNTERWEIGHT							
Maximum Allowable Lifting Capacities Rated Lifting Capacities In Pounds On Intermediate Extended Outriggers See Set Up Note 2.							
95 Ft. Main Boom + 36.5 Ft. Offset Fly							
Load Radius In Feet	1° Offset		15° Offset		30° Offset		Load Radius In Feet
	Loaded Boom Angle (Deg.)	360°	Loaded Boom Angle (Deg.)	360°	Loaded Boom Angle (Deg.)	360°	
30	76.5	16,900					30
35	74.0	15,700	78.0°	11,900			35
40	72.0	14,600	75.5	11,300			40
45	70.0	13,700	73.5	10,700	77.0	8,700	45
50	67.5	12,800	71.0	10,300	74.5	8,300	50
55	65.0	11,800	68.5	9,800	72.0	8,000	55
60	62.5	9,900	66.0	9,400	69.5	7,700	60
65	59.5	8,400	63.5	8,900	67.0	7,400	65
70	57.0	7,200	61.0	7,900	64.5	7,200	70
75	54.0	6,200	58.0	6,800	61.5	6,900	75
80	51.0	5,300	55.0	5,800	58.5	6,300	80
85	48.0	4,500	52.0	5,000	55.5	5,400	85
90	45.0	3,800	48.5	4,200	52.0	4,600	90
95	41.5	3,200	45.5	3,600	48.5	3,900	95
100	38.0	2,700	41.5	3,000	44.5	3,300	100
105	34.0	2,200	37.5	2,500	40.0	2,700	105
110	29.5	1,800	33.0	2,000	35.0	2,200	110
115			28.0	1,600	29.0	1,700	115

BOOM MODE "B" 12,000# COUNTERWEIGHT							
Maximum Allowable Lifting Capacities Rated Lifting Capacities In Pounds On Intermediate Extended Outriggers See Set Up Note 2.							
95 Ft. Main Boom + 61 Ft. Offset Fly							
Load Radius In Feet	1° Offset		15° Offset		30° Offset		Load Radius In Feet
	Loaded Boom Angle (Deg.)	360°	Loaded Boom Angle (Deg.)	360°	Loaded Boom Angle (Deg.)	360°	
35	77.5	9,500					35
40	76.0	9,500					40
45	74.0	9,000					45
50	72.0	8,400	77.0	6,200			50
55	70.0	7,800	75.5	5,900			55
60	68.5	7,300	73.5	5,600			60
65	66.5	6,800	71.5	5,300	76.5	4,300	65
70	64.0	6,300	69.5	5,000	74.5	4,100	70
75	62.0	6,000	67.5	4,800	72.5	4,000	75
80	60.0	5,600	65.0	4,600	70.0	3,800	80
85	58.0	5,100	63.0	4,400	68.0	3,700	85
90	55.5	4,500	60.5	4,200	65.5	3,600	90
95	53.0	3,800	58.5	4,000	63.0	3,500	95
100	50.5	3,300	56.0	3,900	60.5	3,400	100
105	47.5	2,800	53.5	3,400	58.0	3,300	105
110	45.0	2,400	50.5	2,900	55.0	3,200	110
115	42.0	2,000	47.5	2,400	52.0	2,800	115
120	39.0	1,600	44.5	2,000	48.5	2,400	120
125	36.0	1,300	41.0	1,600	45.0	1,900	125
130			37.5	1,300	41.0	1,500	130

WARNING
Do Not Lower 36.5 Ft. Offset Fly In Working Position Below 24 Degrees Unless Main Boom Length is 86 Ft. Or Less, Since Loss Of Stability Will Occur Causing A Tipping Condition.

WARNING
Do Not Lower 61 Ft. Offset Fly In Working Position Below 33 Degrees Unless Main Boom Length is 78 Ft. Or Less, Since Loss Of Stability Will Occur Causing A Tipping Condition.



BOOM MODE "B" 12,000# COUNTERWEIGHT							
Maximum Allowable Lifting Capacities Rated Lifting Capacities In Pounds On Intermediate Extended Outriggers See Set Up Note 2.							
115 Ft. Main Boom + 36.5 Ft. Offset Fly							
Load Radius In Feet	1° Offset		15° Offset		30° Offset		Load Radius In Feet
	Loaded Boom Angle (Deg.)	360°	Loaded Boom Angle (Deg.)	360°	Loaded Boom Angle (Deg.)	360°	
35	76.5	10,500					35
40	75.0	10,500					40
45	73.0	10,500	76.5	10,100			45
50	71.5	10,500	75.0	10,100	78.0°	8,700	50
55	69.5	10,500	73.0	10,100	76.0	8,400	55
60	67.5	9,600	71.0	10,100	74.0	8,100	60
65	65.0	8,100	69.0	9,000	71.5	7,800	65
70	63.0	6,900	66.5	7,700	69.5	7,600	70
75	60.5	5,900	64.0	6,600	67.5	7,200	75
80	58.0	5,000	61.5	5,600	65.0	6,200	80
85	55.5	4,200	59.0	4,800	62.5	5,300	85
90	53.0	3,600	56.5	4,100	59.5	4,500	90
95	50.5	3,000	54.0	3,400	57.0	3,800	95
100	48.0	2,400	51.0	2,800	54.0	3,200	100
105	45.0	2,000	48.5	2,300	51.0	2,600	105
110	42.0	1,500	45.5	1,900	48.0	2,100	110
115					44.5	1,700	115

BOOM MODE "B" 12,000# COUNTERWEIGHT							
Maximum Allowable Lifting Capacities Rated Lifting Capacities In Pounds On Intermediate Extended Outriggers See Set Up Note 2.							
115 Ft. Main Boom + 61 Ft. Offset Fly							
Load Radius In Feet	1° Offset		15° Offset		30° Offset		Load Radius In Feet
	Loaded Boom Angle (Deg.)	360°	Loaded Boom Angle (Deg.)	360°	Loaded Boom Angle (Deg.)	360°	
40	77.5	7,100					40
45	76.0	7,100					45
50	74.5	7,100					50
55	73.0	7,100					55
60	71.5	7,100	76.5	6,000			60
65	70.0	7,100	75.0	5,700			65
70	68.5	7,100	73.5	5,400	77.5	4,300	70
75	67.0	6,700	71.5	5,200	76.0	4,200	75
80	65.0	5,600	69.5	4,900	74.0	4,000	80
85	63.0	4,800	68.0	4,700	72.0	3,900	85
90	61.0	4,100	66.0	4,500	70.5	3,800	90
95	59.0	3,500	64.0	4,200	68.5	3,700	95
100	56.5	2,900	62.0	3,600	66.5	3,600	100
105	54.5	2,500	59.5	3,100	64.5	3,500	105
110	52.5	2,000	57.5	2,600	62.0	3,100	110
115	50.0	1,600	55.0	2,200	59.5	2,700	115
120	48.0	1,300	52.5	1,800	57.0	2,200	120
125			50.5	1,400	54.5	1,800	125
130					51.5	1,400	130

WARNING
Do Not Lower 36.5 Ft. Offset Fly In Working Position Below 40 Degrees Unless Main Boom Length is 86 Ft. Or Less, Since Loss Of Stability Will Occur Causing A Tipping Condition.

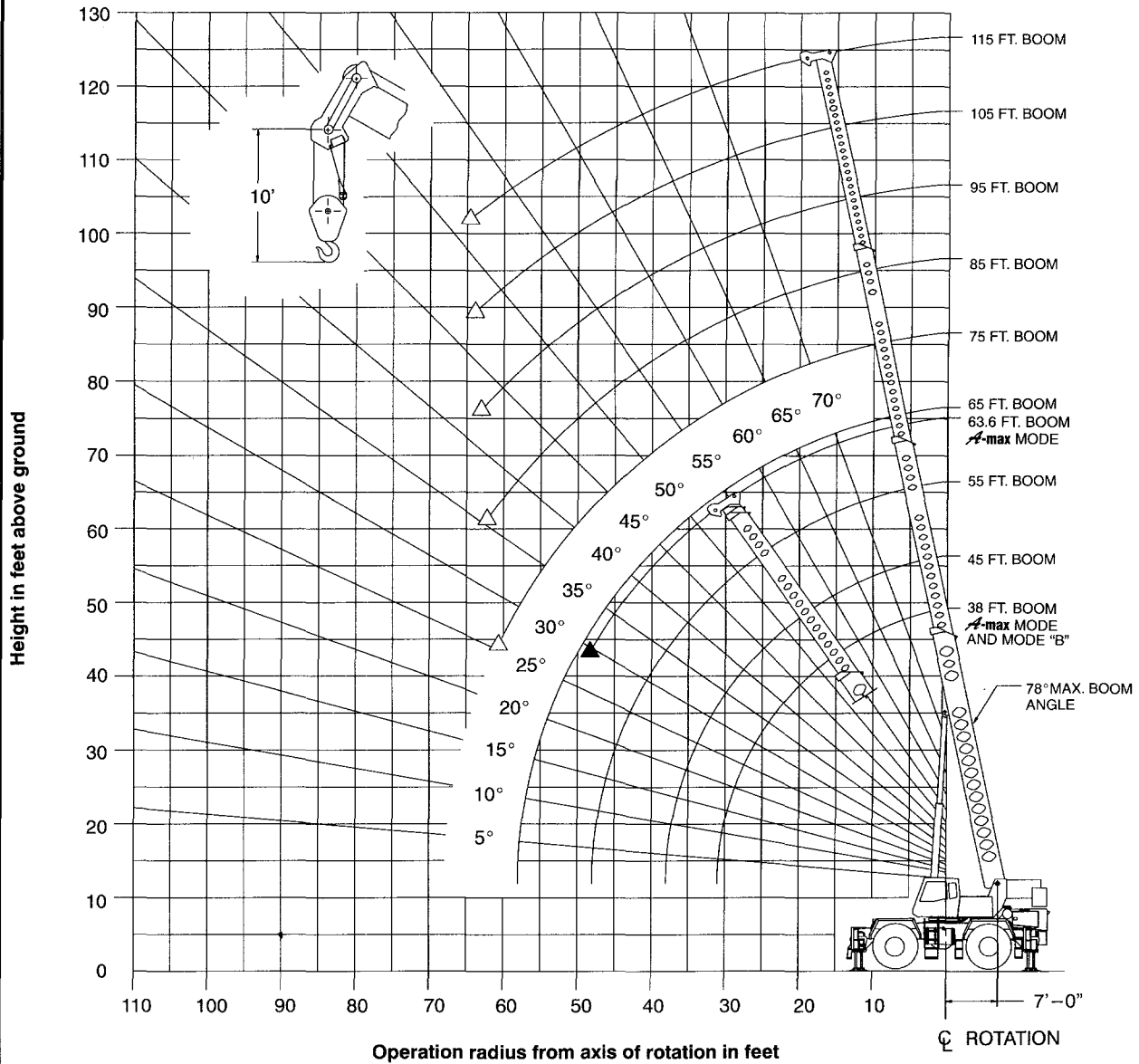
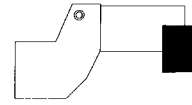
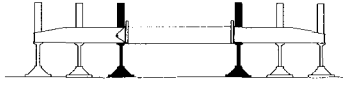
WARNING
Do Not Lower 61 Ft. Offset Fly In Working Position Below 45 Degrees Unless Main Boom Length is 78 Ft. Or Less, Since Loss Of Stability Will Occur Causing A Tipping Condition.

Note: Refer To Page 5 For "Lifting Capacity Deductions" For Capacity Reductions Caused By Stowed Or Erected Auxiliary Load Handling Equipment.

WORKING RANGE DIAGRAM

**Working Range Diagram
On Fully Retracted
Outriggers**

12,000# Counterweight



△ Denotes Main Boom—Boom Mode "B"

▲ Denotes Main Boom—A-max Mode

Note: Boom and fly geometry shown are for unloaded condition and crane standing level on firm supporting surface. Boom deflection, subsequent radius and boom angle change must be accounted for when applying load to hook.



WARNING

Do Not Lower The Boom Below The Minimum Boom Angle For No Load As Shown In The Above Chart For The Boom Lengths Shown. Loss Of Stability Will Occur Causing A Tipping Condition.

Fully Retracted Outriggers - Main Boom Capacities (12,000 lb. Counterweight)

Maximum Allowable Lifting Capacities Rated Lifting Capacities In Pounds On Fully Retracted Outriggers See Set Up Note 2.					
12,000# COUNTERWEIGHT					
38 Ft. To 45 Ft. Main Boom					
Load Radius In Feet	38 Ft.		45 Ft.		Load Radius In Feet
	Loaded Boom Angle (Deg.)	360°	Loaded Boom Angle (Deg.)	360°	
10	67.0	97,800	71.0	87,400	10
12	63.5	67,500	68.5	66,600	12
15	58.5	44,900	64.0	44,200	15
20	48.5	27,300	56.5	26,700	20
25	36.5	18,500	48.0	18,000	25
30	17.5	13,100	38.0	12,700	30
35			24.5	9,200	35
Min. Boom Angle/Cap.	0°	12,200	0°	7,500	Min. Boom Angle/Cap.

Maximum Allowable Lifting Capacities Rated Lifting Capacities In Pounds On Fully Retracted Outriggers See Set Up Note 2.					
12,000# COUNTERWEIGHT					
55 Ft. To 63.6 Ft. Main Boom					
Load Radius In Feet	55 Ft.		63.6 Ft.		Load Radius In Feet
	Loaded Boom Angle (Deg.)	360°	Loaded Boom Angle (Deg.)	360°	
10	75.0	85,600			10
12	72.5	65,700	75.5	56,300	12
15	69.0	43,400	72.5	43,000	15
20	63.5	26,100	67.5	25,700	20
25	57.0	17,500	62.5	17,100	25
30	50.5	12,300	57.0	12,000	30
35	43.0	8,800	51.0	8,500	35
40	34.0	6,300	45.0	6,100	40
45	22.0	4,400	37.5	4,200	45
Min. Boom Angle/Cap.	0°	3,400	29.5°		Min. Boom Angle/Cap.

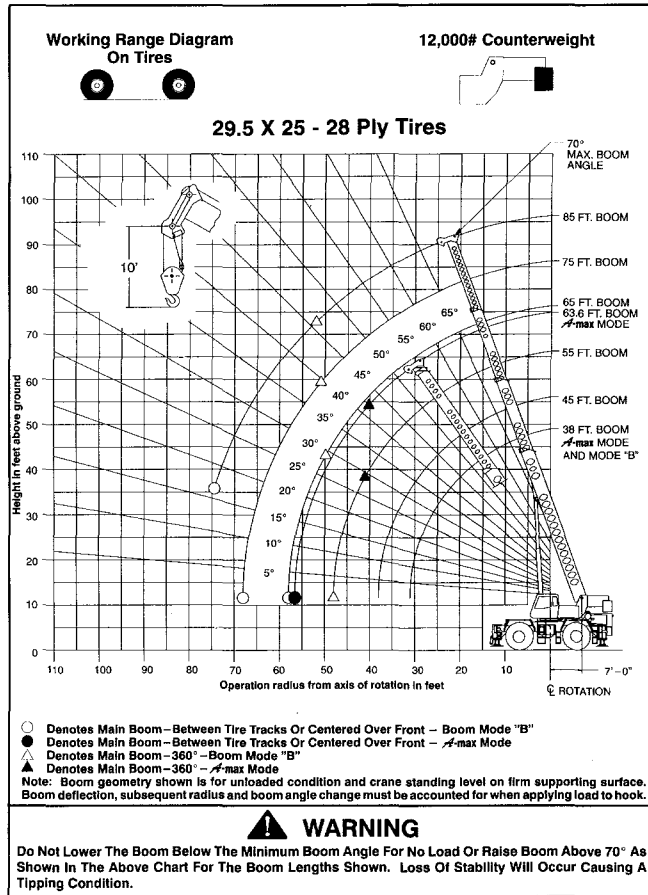
Maximum Allowable Lifting Capacities Rated Lifting Capacities In Pounds On Fully Retracted Outriggers See Set Up Note 2.							
BOOM MODE "B" 12,000# COUNTERWEIGHT							
38 Ft. To 55 Ft. Main Boom							
Load Radius In Feet	38 Ft.		45 Ft.		55 Ft.		Load Radius In Feet
	Loaded Boom Angle (Deg.)	360°	Loaded Boom Angle (Deg.)	360°	Loaded Boom Angle (Deg.)	360°	
10	67.0	97,800	71.0	42,000	74.5	42,000	10
12	63.5	67,500	68.0	42,000	72.5	42,000	12
15	58.5	44,900	64.0	42,000	69.0	42,000	15
20	48.5	27,300	56.5	27,800	63.5	28,200	20
25	36.5	18,500	48.0	18,900	57.0	19,400	25
30	17.5	13,100	38.0	13,600	50.5	14,000	30
35			24.5	10,100	43.0	10,500	35
40					34.0	8,000	40
45					21.5	6,000	45
Min. Boom Angle/Cap.	0°	12,200	0°	8,400	0°	5,000	Min. Boom Angle/Cap.

Maximum Allowable Lifting Capacities Rated Lifting Capacities In Pounds On Fully Retracted Outriggers See Set Up Note 2.							
BOOM MODE "B" 12,000# COUNTERWEIGHT							
95 Ft. To 115 Ft. Main Boom							
Load Radius In Feet	95 Ft.		105 Ft.		115 Ft.		Load Radius In Feet
	Loaded Boom Angle (Deg.)	360°	Loaded Boom Angle (Deg.)	360°	Loaded Boom Angle (Deg.)	360°	
20	76.0	28,900					20
25	72.5	20,100	75.0	20,100	76.5	20,200	25
30	69.5	14,700	71.5	14,700	73.5	14,800	30
35	66.0	11,200	68.5	11,300	71.0	11,300	35
40	62.5	8,600	65.5	8,700	68.0	8,800	40
45	59.0	6,700	62.5	6,800	65.5	6,800	45
50	55.0	5,200	59.0	5,300	62.5	5,300	50
55	51.5	4,000	56.0	4,100	59.5	4,100	55
60	47.0	3,000	52.5	3,100	56.5	3,200	60
65			48.5	2,300	53.5	2,400	65
Min. Boom Angle/Cap.	42.5°		47.5°		51.5°		Min. Boom Angle/Cap.

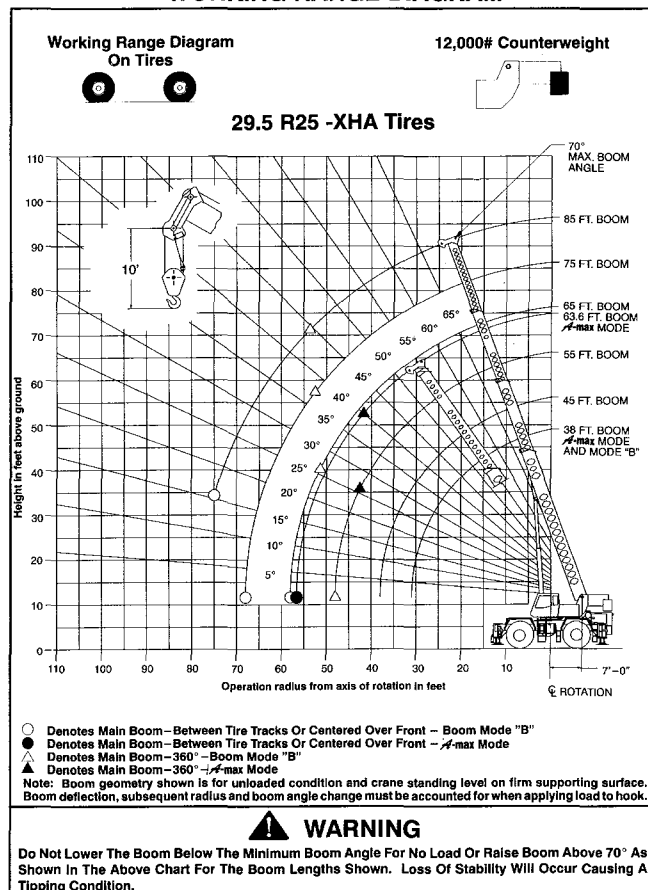
65 Ft. To 85 Ft. Main Boom							
Load Radius In Feet	65 Ft.		75 Ft.		85 Ft.		Load Radius In Feet
	Loaded Boom Angle (Deg.)	360°	Loaded Boom Angle (Deg.)	360°	Loaded Boom Angle (Deg.)	360°	
12	75.5	42,000					12
15	72.5	42,000	75.5	42,000	77.5	42,000	15
20	68.0	28,500	71.0	28,700	74.0	28,800	20
25	63.0	19,600	67.0	19,800	70.0	20,000	25
30	57.5	14,300	62.5	14,500	66.5	14,600	30
35	52.0	10,800	58.0	11,000	62.5	11,100	35
40	46.0	8,200	53.5	8,400	58.5	8,500	40
45	39.0	6,300	48.0	6,500	54.5	6,600	45
50	31.0	4,800	42.5	5,000	50.0	5,100	50
55	20.0	3,600	36.5	3,800	45.0	3,900	55
60			29.0	2,800	40.0	3,000	60
Min. Boom Angle/Cap.	0°	3,000	25.5°		35.5°		Min. Boom Angle/Cap.

Note: Refer To Page 5 For "Lifting Capacity Deductions" For Capacity Reductions Caused By Stowed Or Erected Auxiliary Load Handling Equipment.

WORKING RANGE DIAGRAM



WORKING RANGE DIAGRAM



On Tires (29.5 x 25 - 28 Ply) - Main Boom Capacities (12,000 lb. Counterweight)

On Tire Capacities In Pounds Stationary Capacities - Over Front - Between Tire Tracks Tire Pressure: See Page 5. See Operation Note 19.					
12,000# COUNTERWEIGHT					
38 Ft. To 45 Ft. Main Boom					
Load Radius In Feet	38 Ft.		45 Ft.		Load Radius In Feet
	Loaded Boom Angle (Deg.)	Load	Loaded Boom Angle (Deg.)	Load	
10	67.0	71,400			10
12	63.5	63,000			12
15	58.5	53,400	64.0	52,800	15
20	48.5	39,500	56.5	38,800	20
25	36.5	26,400	48.0	25,900	25
30	17.5	19,000	38.0	18,600	30
35			24.5	13,800	35
Min. Boom Angle/Cap.	0°	17,800	0°	11,500	Min. Boom Angle/Cap.

55 Ft. To 63.6 Ft. Main Boom					
Load Radius In Feet	55 Ft.		63.6 Ft.		Load Radius In Feet
	Loaded Boom Angle (Deg.)	Load	Loaded Boom Angle (Deg.)	Load	
20	63.5	38,200			20
25	57.0	25,400	62.5	25,000	25
30	50.5	18,100	57.0	17,700	30
35	43.0	13,300	51.0	13,000	35
40	34.0	10,100	45.0	9,800	40
45	22.0	7,600	37.5	7,400	45
50			29.0	5,500	50
55			15.5	4,000	55
Min. Boom Angle/Cap.	0°	6,300	0°	3,500	Min. Boom Angle/Cap.

On Tire Capacities In Pounds Pick & Carry Capacities - (1MPH) Boom Centered Over Front Tire Pressure: See Page 5. See Operation Note 19.					
12,000# COUNTERWEIGHT					
38 Ft. To 45 Ft. Main Boom					
Load Radius In Feet	38 Ft.		45 Ft.		Load Radius In Feet
	Loaded Boom Angle (Deg.)	Load	Loaded Boom Angle (Deg.)	Load	
10	67.0	69,000			10
12	63.5	60,200			12
15	58.5	50,100	64.0	49,600	15
20	48.5	38,400	56.5	37,900	20
25	36.5	26,400	48.0	25,900	25
30	17.5	19,000	38.0	18,600	30
35			24.5	13,800	35
Min. Boom Angle/Cap.	0°	17,800	0°	11,500	Min. Boom Angle/Cap.

55 Ft. To 63.6 Ft. Main Boom					
Load Radius In Feet	55 Ft.		63.6 Ft.		Load Radius In Feet
	Loaded Boom Angle (Deg.)	Load	Loaded Boom Angle (Deg.)	Load	
20	63.5	37,400			20
25	57.0	25,400	62.5	25,000	25
30	50.5	18,100	57.0	17,700	30
35	43.0	13,300	51.0	13,000	35
40	34.0	10,100	45.0	9,800	40
45	22.0	7,600	37.5	7,400	45
50			29.0	5,500	50
55			15.5	4,000	55
Min. Boom Angle/Cap.	0°	6,300	0°	3,500	Min. Boom Angle/Cap.

On Tire Capacities In Pounds Stationary Capacities - Over Front - Between Tire Tracks Tire Pressure: See Page 5. See Operation Note 19.							
12,000# COUNTERWEIGHT							
38 Ft. To 55 Ft. Main Boom							
Load Radius In Feet	38 Ft.		45 Ft.		55 Ft.		Load Radius In Feet
	Loaded Boom Angle (Deg.)	Load	Loaded Boom Angle (Deg.)	Load	Loaded Boom Angle (Deg.)	Load	
10	67.0	71,400					10
12	63.5	63,000					12
15	58.5	53,400	64.0	42,000			15
20	48.5	39,500	56.5	40,000	63.5	40,500	20
25	36.5	26,400	48.0	27,000	57.0	27,400	25
30	17.5	19,000	38.0	19,500	50.5	20,000	30
35			24.5	14,700	43.0	15,100	35
40					34.0	11,800	40
45					22.0	9,300	45
Min. Boom Angle/Cap.	0°	17,800	0°	12,500	0°	8,000	Min. Boom Angle/Cap.

65 Ft. To 85 Ft. Main Boom							
Load Radius In Feet	65 Ft.		75 Ft.		85 Ft.		Load Radius In Feet
	Loaded Boom Angle (Deg.)	Load	Loaded Boom Angle (Deg.)	Load	Loaded Boom Angle (Deg.)	Load	
25	63.0	27,700					25
30	57.5	20,300	63.0	20,500			30
35	52.0	15,400	58.0	15,600	62.5	15,700	35
40	46.0	12,100	53.5	12,300	58.5	12,400	40
45	39.0	9,600	48.5	9,800	54.5	9,900	45
50	31.0	7,600	42.5	7,800	50.0	8,000	50
55	20.0	6,100	36.5	6,300	45.5	6,400	55
60			29.0	5,000	40.0	5,200	60
65			18.5	4,000	34.0	4,200	65
70					27.0	3,300	70
75					17.5	2,500	75
Min. Boom Angle/Cap.	0°	5,300	0°	3,500	16.5°		Min. Boom Angle/Cap.

On Tire Capacities In Pounds Pick & Carry Capacities - (1MPH) Boom Centered Over Front Tire Pressure: See Page 5. See Operation Note 19.							
12,000# COUNTERWEIGHT							
38 Ft. To 55 Ft. Main Boom							
Load Radius In Feet	38 Ft.		45 Ft.		55 Ft.		Load Radius In Feet
	Loaded Boom Angle (Deg.)	Load	Loaded Boom Angle (Deg.)	Load	Loaded Boom Angle (Deg.)	Load	
10	67.0	69,000					10
12	63.5	60,200					12
15	58.5	50,100	64.0	42,000			15
20	48.5	38,400	56.5	38,400	63.5	38,400	20
25	36.5	26,400	48.0	27,000	57.0	27,400	25
30	17.5	19,000	38.0	19,500	50.5	20,000	30
35			24.5	14,700	43.0	15,100	35
40					34.0	11,800	40
45					22.0	9,300	45
Min. Boom Angle/Cap.	0°	17,800	0°	12,500	0°	8,000	Min. Boom Angle/Cap.

65 Ft. To 85 Ft. Main Boom							
Load Radius In Feet	65 Ft.		75 Ft.		85 Ft.		Load Radius In Feet
	Loaded Boom Angle (Deg.)	Load	Loaded Boom Angle (Deg.)	Load	Loaded Boom Angle (Deg.)	Load	
25	63.0	27,700					25
30	57.5	20,300	63.0	20,500			30
35	52.0	15,400	58.0	15,600	62.5	15,700	35
40	46.0	12,100	53.5	12,300	58.5	12,400	40
45	39.0	9,600	48.5	9,800	54.5	9,900	45
50	31.0	7,600	42.5	7,800	50.0	8,000	50
55	20.0	6,100	36.5	6,300	45.5	6,400	55
60			29.0	5,000	40.0	5,200	60
65			18.5	4,000	34.0	4,200	65
70					27.0	3,300	70
75					17.5	2,500	75
Min. Boom Angle/Cap.	0°	5,300	0°	3,500	16.5°		Min. Boom Angle/Cap.

Note: Refer To Page 5 For "Lifting Capacity Deductions" For Capacity Reductions Caused By Stowed Or Erected Auxiliary Load Handling Equipment.

On Tire Capacities In Pounds Tire Pressure: See Page 5. Stationary Capacities - 360 Degree See Operation Note 19.						
A-max Mode 12,000# COUNTERWEIGHT						
38 Ft. To 45 Ft. Main Boom						
Load Radius In Feet	38 Ft.		45 Ft.		Load Radius In Feet	
	Loaded Boom Angle (Deg.)	Load	Loaded Boom Angle (Deg.)	Load		
10	67.0	55,300			10	
12	63.5	44,600			12	
15	58.5	30,800	64.0	30,200	15	
20	48.5	19,000	56.5	18,500	20	
25	36.5	12,700	48.0	12,300	25	
30	17.5	8,700	38.0	8,400	30	
35			24.5	5,700	35	
Min. Boom Angle/Cap.	0°	8,000	0°	4,400	Min. Boom Angle/Cap.	

WARNING
Do not raise the boom above 70 degrees. Loss of backward stability will occur causing a tipping situation.

On Tire Capacities In Pounds Tire Pressure: See Page 5. Stationary Capacities - 360 Degree See Operation Note 19.							
BOOM MODE "B" 12,000# COUNTERWEIGHT							
38 Ft. To 55 Ft. Main Boom							
Load Radius In Feet	38 Ft.		45 Ft.		55 Ft.		Load Radius In Feet
	Loaded Boom Angle (Deg.)	Load	Loaded Boom Angle (Deg.)	Load	Loaded Boom Angle (Deg.)	Load	
10	67.0	55,300					10
12	63.5	44,600					12
15	58.5	30,800	64.0	31,300			15
20	48.5	19,000	56.5	19,500	63.0	19,900	20
25	36.5	12,700	48.0	13,100	57.0	13,500	25
30	17.5	8,700	38.0	9,200	50.5	9,600	30
35			24.5	6,500	43.0	6,900	35
40					34.0	5,000	40
45					21.5	3,500	45
Min. Boom Angle/Cap.	0°	8,000	0°	5,200	0°	2,700	Min. Boom Angle/Cap.

WARNING
Do not raise the boom above 70 degrees. Loss of backward stability will occur causing a tipping situation.

55 Ft. To 63.6 Ft. Main Boom					
Load Radius In Feet	55 Ft.		63.6 Ft.		Load Radius In Feet
	Loaded Boom Angle (Deg.)	Load	Loaded Boom Angle (Deg.)	Load	
20	63.5	18,000			20
25	57.0	11,800	62.0	11,500	25
30	50.5	7,900	57.0	7,700	30
35	43.0	5,300	51.0	5,100	35
40	34.0	3,400	44.5	3,200	40
Min. Boom Angle/Cap.	29.0°		42.0°		Min. Boom Angle/Cap.

WARNING
Do not raise the boom above 70 degrees. Loss of backward stability will occur causing a tipping situation.

65 Ft. To 85 Ft. Main Boom							
Load Radius In Feet	65 Ft.		75 Ft.		85 Ft.		Load Radius In Feet
	Loaded Boom Angle (Deg.)	Load	Loaded Boom Angle (Deg.)	Load	Loaded Boom Angle (Deg.)	Load	
20							20
25	63.0	13,800					25
30	57.5	9,900	62.5	10,100			30
35	52.0	7,200	58.0	7,400	62.5	7,500	35
40	46.0	5,200	53.5	5,400	58.5	5,500	40
45	39.0	3,700	48.0	3,900	54.0	4,000	45
50	31.0	2,600	42.5	2,700	50.0	2,900	50
Min. Boom Angle/Cap.	29.0°		39.5°		46.0°		Min. Boom Angle/Cap.

WARNING
Do not raise the boom above 70 degrees. Loss of backward stability will occur causing a tipping situation.

On Tires (29.5R25 - XHA) - Main Boom Capacities (12,000 lb. Counterweight)

On Tire Capacities In Pounds Stationary Capacities - Over Front - Between Tire Tracks Tire Pressure: See Page 5. See Operation Note 19.					
A-max Mode 12,000# COUNTERWEIGHT					
38 Ft. To 45 Ft. Main Boom					
Load Radius In Feet	38 Ft.		45 Ft.		Load Radius In Feet
	Loaded Boom Angle (Deg.)	Load	Loaded Boom Angle (Deg.)	Load	
10	67.0	77,600			10
12	63.5	68,600			12
15	58.5	57,700	64.0	57,000	15
20	48.5	39,800	56.5	39,100	20
25	36.5	26,700	48.0	26,200	25
30	17.5	19,200	38.0	18,800	30
35			24.5	13,900	35
Min. Boom Angle/Cap.	0°	17,900	0°	11,700	Min. Boom Angle/Cap.

On Tire Capacities In Pounds Stationary Capacities - Over Front - Between Tire Tracks Tire Pressure: See Page 5. See Operation Note 19.							
BOOM MODE "B" 12,000# COUNTERWEIGHT							
38 Ft. To 55 Ft. Main Boom							
Load Radius In Feet	38 Ft.		45 Ft.		55 Ft.		Load Radius In Feet
	Loaded Boom Angle (Deg.)	Load	Loaded Boom Angle (Deg.)	Load	Loaded Boom Angle (Deg.)	Load	
10	67.0	77,600					10
12	63.5	68,600					12
15	58.5	57,700	64.0	42,000			15
20	48.5	39,800	56.5	40,400	63.5	40,900	20
25	36.5	26,700	48.0	27,200	57.0	27,700	25
30	17.5	19,200	38.0	19,700	50.5	20,200	30
35			24.5	14,800	43.0	15,300	35
40					34.0	11,900	40
45					22.0	9,400	45
Min. Boom Angle/Cap.	0°	17,900	0°	12,600	0°	8,100	Min. Boom Angle/Cap.

55 Ft. To 63.6 Ft. Main Boom					
Load Radius In Feet	55 Ft.		63.6 Ft.		Load Radius In Feet
	Loaded Boom Angle (Deg.)	Load	Loaded Boom Angle (Deg.)	Load	
20	63.5	38,500			20
25	57.0	25,600	62.5	25,300	25
30	50.5	18,300	57.0	17,900	30
35	43.0	13,500	51.0	13,200	35
40	34.0	10,200	45.0	9,900	40
45	22.0	7,700	37.5	7,500	45
50			29.0	5,600	50
55			15.5	4,100	55
Min. Boom Angle/Cap.	0°	6,400	0°	3,600	Min. Boom Angle/Cap.

65 Ft. To 85 Ft. Main Boom							
Load Radius In Feet	65 Ft.		75 Ft.		85 Ft.		Load Radius In Feet
	Loaded Boom Angle (Deg.)	Load	Loaded Boom Angle (Deg.)	Load	Loaded Boom Angle (Deg.)	Load	
25	63.0	28,000					25
30	57.5	20,500	63.0	20,600			30
35	52.0	15,600	58.0	15,800	62.5	15,900	35
40	46.0	12,200	53.5	12,400	58.5	12,500	40
45	39.5	9,700	48.5	9,900	54.5	10,000	45
50	31.0	7,700	42.5	7,900	50.0	8,100	50
55	20.0	6,200	36.5	6,400	45.5	6,500	55
60			29.0	5,100	40.0	5,300	60
65			18.5	4,100	34.0	4,200	65
70					27.0	3,400	70
75					17.5	2,600	75
Min. Boom Angle/Cap.	0°	5,400	0°	3,500	15.5°		Min. Boom Angle/Cap.

Note: Refer To Page 5 For "Lifting Capacity Deductions" For Capacity Reductions Caused By Stowed Or Erected Auxiliary Load Handling Equipment.

On Tires (29.5R25 - XHA) - Main Boom Capacities (12,000 lb. Counterweight) con't

On Tire Capacities In Pounds Pick & Carry Capacities - (1MPH) Boom Centered Over Front Tire Pressure: See Page 5. See Operation Note 19.					
12,000# COUNTERWEIGHT					
38 Ft. To 45 Ft. Main Boom					
Load Radius In Feet	38 Ft.		45 Ft.		Load Radius In Feet
	Loaded Boom Angle (Deg.)	Load	Loaded Boom Angle (Deg.)	Load	
10	67.0	71,500			10
12	63.5	62,500			12
15	58.5	52,000	64.0	51,500	15
20	48.5	39,800	56.5	39,100	20
25	36.5	26,700	48.0	26,200	25
30	17.5	19,200	38.0	18,800	30
35			24.5	13,900	35
Min. Boom Angle/Cap.	0°	17,900	0°	11,700	Min. Boom Angle/Cap.

55 Ft. To 63.6 Ft. Main Boom					
Load Radius In Feet	55 Ft.		63.6 Ft.		Load Radius In Feet
	Loaded Boom Angle (Deg.)	Load	Loaded Boom Angle (Deg.)	Load	
20	63.5	38,500			20
25	57.0	25,600	62.5	25,300	25
30	50.5	18,300	57.0	17,900	30
35	43.0	13,500	51.0	13,200	35
40	34.0	10,200	45.0	9,900	40
45	22.0	7,700	37.5	7,500	45
50			29.0	5,600	50
55			15.5	4,100	55
Min. Boom Angle/Cap.	0°	6,400	0°	3,600	Min. Boom Angle/Cap.

On Tire Capacities In Pounds Tire Pressure: See Page 5. Stationary Capacities - 360 Degree See Operation Note 19.					
12,000# COUNTERWEIGHT					
38 Ft. To 45 Ft. Main Boom					
Load Radius In Feet	38 Ft.		45 Ft.		Load Radius In Feet
	Loaded Boom Angle (Deg.)	Load	Loaded Boom Angle (Deg.)	Load	
10	67.0	61,000			10
12	63.5	47,800			12
15	58.5	32,900	64.0	32,200	15
20	48.5	20,300	56.5	19,800	20
25	36.5	13,600	48.0	13,100	25
30	17.5	9,400	38.0	9,100	30
35			24.5	6,300	35
Min. Boom Angle/Cap.	0°	8,700	0°	4,900	Min. Boom Angle/Cap.

WARNING
Do not raise the boom above 70 degrees. Loss of backward stability will occur causing a tipping situation.

55 Ft. To 63.6 Ft. Main Boom					
Load Radius In Feet	55 Ft.		63.6 Ft.		Load Radius In Feet
	Loaded Boom Angle (Deg.)	Load	Loaded Boom Angle (Deg.)	Load	
20	63.5	19,200			20
25	57.0	12,700	62.0	12,400	25
30	50.5	8,700	57.0	8,400	30
35	43.0	5,900	51.0	5,600	35
40	34.0	3,900	45.0	3,600	40
Min. Boom Angle/Cap.	26.0°		40.0°		Min. Boom Angle/Cap.

WARNING
Do not raise the boom above 70 degrees. Loss of backward stability will occur causing a tipping situation.

On Tire Capacities In Pounds Pick & Carry Capacities - (1MPH) Boom Centered Over Front Tire Pressure: See Page 5. See Operation Note 19.							
12,000# COUNTERWEIGHT							
38 Ft. To 55 Ft. Main Boom							
Load Radius In Feet	38 Ft.		45 Ft.		55 Ft.		Load Radius In Feet
	Loaded Boom Angle (Deg.)	Load	Loaded Boom Angle (Deg.)	Load	Loaded Boom Angle (Deg.)	Load	
10	67.0	71,500					10
12	63.5	62,500					12
15	58.5	52,000	64.0	42,000			15
20	48.5	39,800	56.5	40,300	63.5	40,300	20
25	36.5	26,700	48.0	27,200	57.0	27,700	25
30	17.5	19,200	38.0	19,700	50.5	20,200	30
35			24.5	14,800	43.0	15,300	35
40					34.0	11,900	40
45					22.0	9,400	45
Min. Boom Angle/Cap.	0°	17,900	0°	12,600	0°	8,100	Min. Boom Angle/Cap.

65 Ft. To 85 Ft. Main Boom							
Load Radius In Feet	65 Ft.		75 Ft.		85 Ft.		Load Radius In Feet
	Loaded Boom Angle (Deg.)	Load	Loaded Boom Angle (Deg.)	Load	Loaded Boom Angle (Deg.)	Load	
25	63.0	28,000					25
30	57.5	20,500	63.0	20,600			30
35	52.0	15,600	58.0	15,800	62.5	15,900	35
40	46.0	12,200	53.5	12,400	58.5	12,500	40
45	39.5	9,700	48.5	9,900	54.5	10,000	45
50	31.0	7,700	42.5	7,900	50.0	8,100	50
55	20.0	6,200	36.5	6,400	46.5	6,500	55
60			29.0	5,100	40.0	5,300	60
65			18.5	4,100	34.0	4,200	65
70					27.0	3,400	70
75					17.5	2,600	75
Min. Boom Angle/Cap.	0°	5,400	0°	3,500	15.5°		Min. Boom Angle/Cap.

On Tire Capacities In Pounds Tire Pressure: See Page 5. Stationary Capacities - 360 Degree See Operation Note 19.							
12,000# COUNTERWEIGHT							
38 Ft. To 55 Ft. Main Boom							
Load Radius In Feet	38 Ft.		45 Ft.		55 Ft.		Load Radius In Feet
	Loaded Boom Angle (Deg.)	Load	Loaded Boom Angle (Deg.)	Load	Loaded Boom Angle (Deg.)	Load	
10	67.0	81,000					10
12	63.5	47,800					12
15	58.5	32,900	64.0	33,400			15
20	48.5	20,300	56.5	20,700	63.0	21,200	20
25	36.5	13,600	48.0	14,100	57.0	14,500	25
30	17.5	9,400	38.0	9,900	50.5	10,400	30
35			24.5	7,100	43.0	7,500	35
40					34.0	5,500	40
45					21.5	3,900	45
Min. Boom Angle/Cap.	0°	8,700	0°	5,700	0°	3,100	Min. Boom Angle/Cap.

WARNING
Do not raise the boom above 70 degrees. Loss of backward stability will occur causing a tipping situation.

65 Ft. To 85 Ft. Main Boom							
Load Radius In Feet	65 Ft.		75 Ft.		85 Ft.		Load Radius In Feet
	Loaded Boom Angle (Deg.)	Load	Loaded Boom Angle (Deg.)	Load	Loaded Boom Angle (Deg.)	Load	
25	63.0	14,700					25
30	57.5	10,600	62.5	10,800			30
35	52.0	7,800	58.0	8,000	62.5	8,100	35
40	46.0	5,700	53.5	5,900	58.5	6,000	40
45	39.0	4,200	48.0	4,300	54.5	4,500	45
50	31.0	2,900	42.5	3,100	50.0	3,200	50
Min. Boom Angle/Cap.	26.0°		37.5°		44.5°		Min. Boom Angle/Cap.

WARNING
Do not raise the boom above 70 degrees. Loss of backward stability will occur causing a tipping situation.

Note: Refer To Page 5 For "Lifting Capacity Deductions" For Capacity Reductions Caused By Stowed Or Erected Auxiliary Load Handling Equipment.

This page intentionally left blank

This page intentionally left blank

This page intentionally left blank

Link-Belt Construction Equipment Company Lexington, Kentucky www.linkbelt.com

®Link-Belt is a registered trademark. Copyright 2005. We are constantly improving our products and therefore reserve the right to change designs and specifications.