



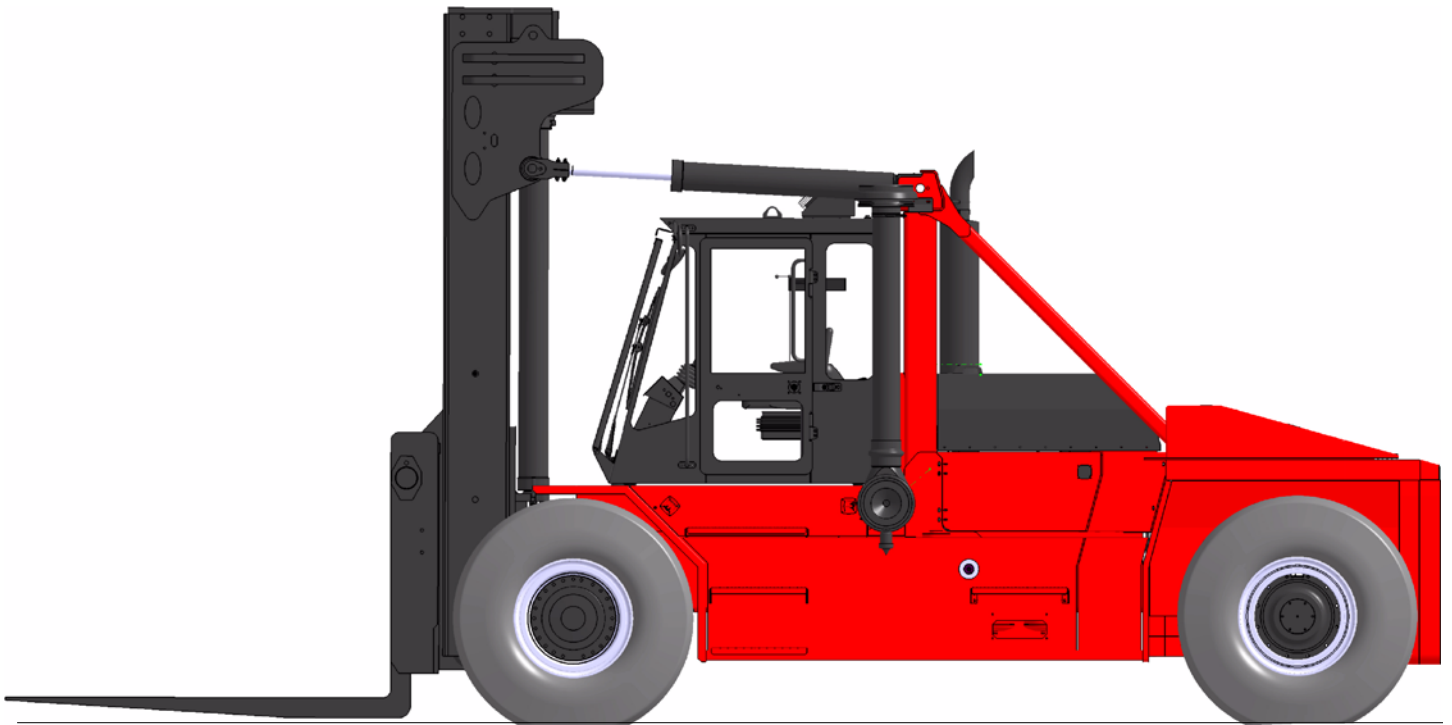
“Big Red”
TX-650L

Taylor Industrial Trucks
Preliminary Specifications

Rated Capacity 65,000-lbs. **(29,484 kg)**

48-in. **(1,219 mm)** Load Center

180-in. **(4,572 mm)** Wheelbase



“Big Red” TX-650L

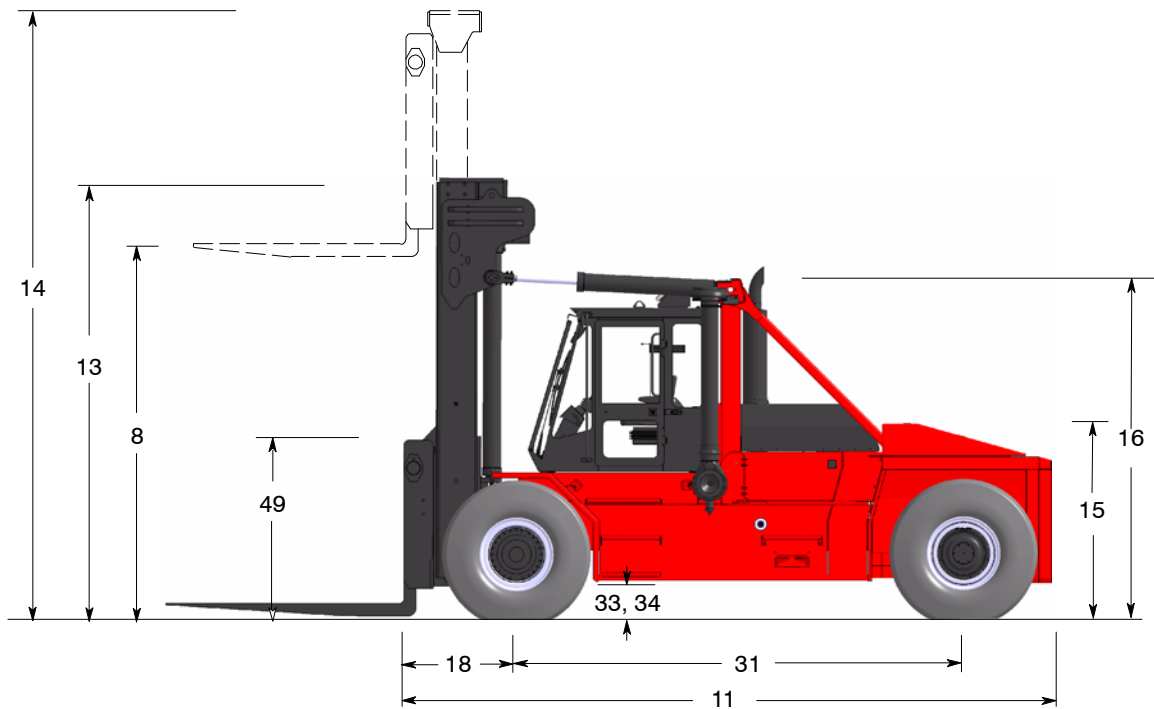
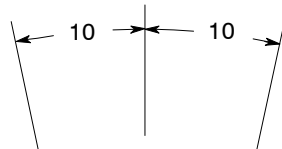
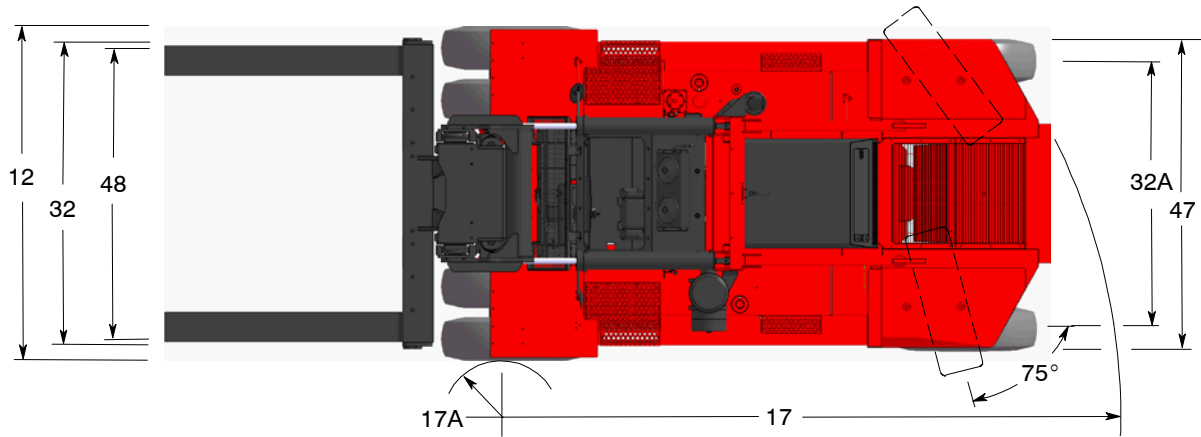
GENERAL	1	Manufacturer	Manufacturer's Name	TAYLOR	
	2	Model	Manufacturer's Designation	TX-650L	
				English	Metric
	3	Capacity	Rated Capacity	lb (kg)	65,000 29,484
	4	Load Center	Distance	in (mm)	48 1,219
	5	Power Type	Gas, LPG, Or Diesel		Diesel
	6	Tire Type	Cushion, Pneumatic Front / Rear		Pneumatic / Pneumatic
	7	Wheels	Number (X = Driven) Front / Rear		4X / 2
DIMENSIONS	8	Upright Lift	Standard Lift (Top Of Fork)	in (mm)	137 3,480
	9	Forks	Thickness	in (mm)	5 127
	9A		Width	in (mm)	12 305
	9B		Length	in (mm)	96 2,438
	10		Tilt Angle	Standard Upright - Forward / Backward	deg.°
	11	Overall Dimensions	Length To Face Of Forks	in (mm)	261 6,629
	12		Width (Standard Tires)	in (mm)	134.5 3,416
	13		Height, Standard Upright Lowered	in (mm)	160 4,064
	14		Height, Standard Upright Extended	in (mm)	226 5,740
	15		Height To Top Of Counterweight	in (mm)	80.5 2,045
	16		Height To Top Of A-Frame	in (mm)	138 3,505
	17	Turning Radius	Minimum Outside	in (mm)	250 6,350
	17A		Minimum Inside	in (mm)	25 635
	18	Load Distance	Center of Wheel To Face Of Forks	in (mm)	45 1,143
	19	Aisle Width	(Add Load Length For 90° Stacking)	in (mm)	295 7,493
PERFORMANCE	20	Stability	Comply With ANSI?		Yes
	21	Speeds	Travel Speed - Maximum Forward	mph (km/h)	18 29
	22		Lift Speed - No Load	fpm (m/s)	48 0.24
	22A		Lift Speed - With Load	fpm (m/s)	42 0.21
	23		Lowering Speed - No Load / With Load	fpm (m/s)	60 .3
	24	Drawbar Pull	Powershift (Maximum At Stall)	lb (kN)	42,050 187
25	Gradeability	Powershift (Maximum At Stall) No Load	%	31.2	
25A		Powershift (Maximum At Stall) With Load	%	21.2	
WEIGHT	26	Ttl. Apprx. Wt.	Standard Truck	lb (kg)	94,000 42,638
	27	Axle Loading	Static With Rated Load - Front	lb (kg)	144,600 65,591
	27A		Static With Rated Load - Rear	lb (kg)	14,400 6,532
	27B		Static With No Load - Front	lb (kg)	46,000 20,866
	27C		Static With No Load - Rear	lb (kg)	48,000 21,773
WHEELS / TIRES	28	Tires	Number - Front / Rear		4 / 2
	29		Size - Front		16.00 x 25 - 24 PR
	30		Size - Rear		16.00 x 25 - 24 PR
	31	Wheelbase	Distance	in (mm)	180 4,572
	32	Tread	Center Of Outside (Dual) Tires - Front	in (mm)	117.1 2,974
	32A		Center Of Tires - Rear	in (mm)	108 2,743
	33	Ground Clearance	No Load At Lowest Point	in (mm)	12 305
	34		No Load At Center Of Wheelbase	in (mm)	16 406
	35	Brakes	Service / Parking - Method Of Control		Foot / Hand
	36		Service / Parking - Method Of Operation		Air / Spring
POWER UNITS / XMSN	37	Battery	Volts / Ampere Hours (2 Batteries)	V/Ah	12 / 2300
	38	Internal Combustion Engine	Make / Model		Cummins QSC8.3-C240 Tier III TPEM
	39		Output - Intermittent Per SAE Standards	hp (kW)	240 179
	40		Governed Speed - With Load	rpm	2200
	41		Cycle / Number Of Cylinders / Displacement	cu in (L)	4 / 6 / 506 4 / 6 / 8.3
	42	Clutch	Type		Declutch
	43	Gear Change	Type		Hand
	44	Transmission	Number Of Speeds - Forward / Reverse		3 / 3
	45		Type		Powershift
	46	Relief Press.	For Attachments	psi (bar)	1500 103
47		Width Across Counterweight	in (mm)	124 3,150	
48		Standard Fork Spread	in (mm)	120 3,048	
49		Ground To Top Of Carriage	in (mm)	90 2,286	
50		Load Moment	in-lbs (m-kg)	6,045,000 69,650	

† NOTE: Performance specifications are for trucks equipped as described on the back page of this specification sheet. Performance specifications are affected by the condition of the vehicle, its components, and the nature and condition of the operating area. If these specifications are critical, the proposed application should be discussed with your Taylor sales representative.

“Big Red” TX-650L

Mast Dimensions (inches / millimeters)

2-Stage ULTRA-VU Telescopic Mast	Optional Lift Height (8)		OAHL (13)		OAGR (14)	
	English	Metric	English	Metric	English	Metric
	137	3,480	160	4,064	226	5,740
	161	4,089	172	4,369	250	6,350
	185	4,699	184	4,674	274	6,960
	221	5,613	202	5,131	310	7,874



“Big Red” TX-650L

Engine

Cummins QSC8.3-C240 Tier III TPEM, 6-cylinder electronic turbocharged, charge air after cooled (air to air) diesel engine has 506 cu-in. (8.3 L) displacement, 4.49-in. (114 mm) bore x 5.31-in. (135 mm) stroke. Rated power 240-hp (179 kW) at 2200 rpm (all engine ratings are based on SAE standard ambient conditions). Maximum power of 260-hp (194 kW) at 2000 rpm. Peak torque is 800 ft-lbs. (1,085 N-m) at 2000 rpm. Emission certification: US EPA Tier III, Carb Tier III, EU Stage III.

Standard features are electronic diagnostic, maintenance monitor, fuel/water separator, engine/transmission protection system, fuel economy and reduced emissions.

Fuel tank capacity is 160 gallons (606 L).

Air Cleaner

The dry air cleaner has a safety element, restriction indicator, and vertical air intake extension.

Cooling System

The conventional top / bottom tank radiator has wide fin spacing to reduce dirt build-up and provide optimum engine cooling. Cooling includes engine charge air cooler, engine coolant air cooler, transmission oil air cooler, and a separate wet disc and hydraulic oil air cooler. Each can be serviced separately.

Electrical, Instrumentation, and Accessories

The one-piece instrument panel flips down for easy servicing and is pre-wired to accommodate heavy-duty accessories. All wiring is color coded.

The unit has a 12-volt electrical system. Standard equipment includes a key-type anti-restart ignition system, 2 heavy-duty batteries, 160-amp alternator, reset circuit breakers, horn, work lights (two front, and two rear), key-switch actuated amber strobe light, reverse-actuated warning alarm and tilt steering.

Display indicates functions for seat belt, engine oil pressure, parking brake, battery indicator, and Tier III engine electronic diagnostic light package.

All machine controls are Taylor Integrated Control Systems (TICS) using J1939 CANbus technology. This allows controllers and sensors to communicate with minimal wiring between the components. I/O modules are used to eliminate electromechanical relay devices and add reliability to the machine control system. J1939 CAN bus technology allows all machine data to be accessed through the main color display located in the cab. This display shows engine data along with warnings, and man/ machine interface data. The display allows service personnel to access data needed during troubleshooting (such as sensor status and controller outputs). Machine functions can be tuned through the main display in the cab. Tuning functions are password protected to prevent operator access.

Transmission

The three-speed, fully reversing, fully electric, modulated powershift transmission has inching, electric roll shift control, and a separate air-to-oil cooler. The filler pipe dipstick and large, heavy-duty oil filter are easily accessible. Filter is mounted to transmission. Automatic powershift (standard).

Drive Axle

The heavy-duty planetary type drive axle housing is bolted to the frame.

Steer Axle

The single hydraulic cylinder design steer axle, with heavy-duty links from the cylinder ram directly to tapered roller bearing mounted spindles, has tapered wheel and kingpin bearings. All joints are sealed, can be lubricated, and never need adjusting.

Brake System

The internal force-cooled, air over hydraulic, wet disc, service brakes (and the hydraulic oil) are cooled by an air-to-oil cooler separate from the transmission cooler. The left pedal, combines actuation of service brakes and transmission inching; the right pedal actuates the service brakes only. The parking brake control is mounted on the instrument panel.

Chassis

The all-welded frame has an integral counterweight. The hood slides on rollers. The cab is 2-door and includes one 32,000 BTU heater, one circulation fan, front and rear windshield wipers, front windshield washer, dome light, all glass tinted, door hold back latches with trip handles, grey insulation, and black floor mat inside cab. Cab color black only. The adjustable, black vinyl covered air suspension seat with arm rest and orange seat belt is standard. The seat has $\pm 15^\circ / 20^\circ$ rotation.

Hydraulic System

The high-capacity hydraulic tank has a spin-on tank breather, wire-mesh strainers, and full-flow 10-micron return-line filters, with a replaceable element in the tank. Tank refill capacity is 114 gallons (432 L).

Mast, Carriage, and Rollers

The 11-ft. (3.4 m) ULTRA-VU telescopic, nested-channel mast is constructed of high-strength steel for minimum weight. The two lifting eyes and bolt-on caps permit safe, easy removal of the mast.

The “C” type carriage has a high strength-to-weight ratio. The forks are pin-mounted and fully adjustable from 120-in. (3,048 mm) outside to 2-in. (51 mm) inside the center brace.

Main rollers and chain rollers have shielded, tapered, roller bearings. The carriage side wear pads are adjustable to compensate for wear. All rollers can be lubricated.

Forks

The forks are hammer forged from heat treated alloy steel. Standard size: 5-in. x 12-in. x 96-in. (127 mm x 305 mm x 2438 mm).

This vehicle is certified to meet the applicable design and performance criteria required for Powered Industrial Trucks in OSHA Safety and Health Standards, Title 29 CFR. Part 1910.178, and the applicable design and performance requirements in ANSI B56.1 that were in effect at the time of manufacture. These standards also apply to the user and should be adhered to while operating this vehicle.

All specifications are subject to change without notice. Some operating data may be affected by the condition of the operating area. If these specifications are critical, contact the factory.