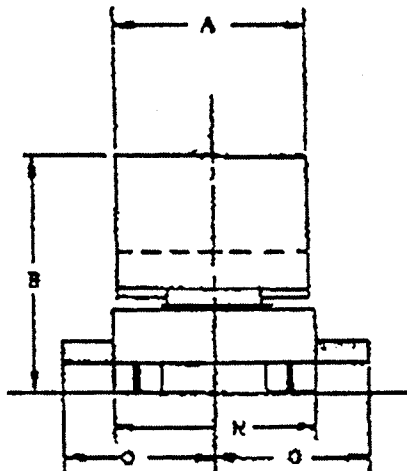
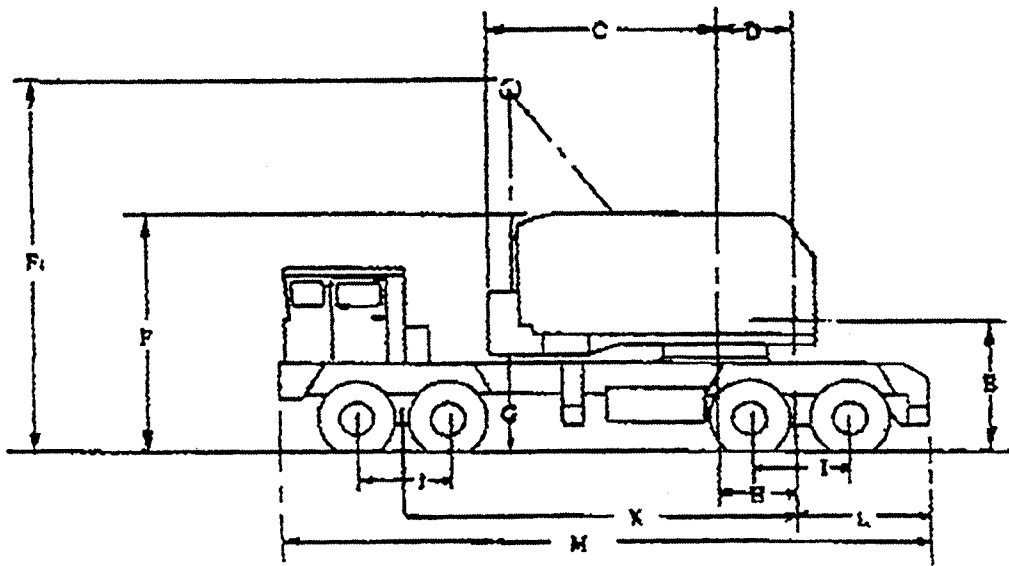


General Specifications

210 FEET BOOM AND JIB

62.5 TON



A. Width of cab	9' 0"
B. Height to top of cab	11' 11 1/4"
C. Tail swing	12' 1"
D. Centerline of pivot to centerline of boom foot	3' 7 1/4"
E. Ground to centerline of boom foot	6' 5 1/4"
F. Height over A-frame (lowered)	12' 5 1/4"
F1. Height over A-frame (raised)	19' 1 3/4"
G. Ground to bottom counterweight	4' 7 1/4"
H. Centerline of pivot to centerline of rear bogie	3' 6"
I. Distance between rear axles	4' 6"
J. Distance between front axles	4' 6"
K. Centerline of rear bogie to centerline of front bogie	18' 8"
L. Centerline of rear bogie to rear outrigger	6' 8 1/4"
M. Overall length	31' 4 3/4"
N. Overall width	11' 0"
O. Center of carrier to extended outrigger	9' 4"
O1. Outrigger Extension w/ Hydraulic Outriggers	9' 0"
LH Turning radius (over front bumper)	53' 10"
RH Turning radius (over front bumper)	54' 8"
Ground clearance	12 3/4"



Lifting Capacities

Boom Length	Radius In Feet	Boom Angle Degrees	Free Over Side	Free Over Rear	Outriggers Extended
40'	12	79	73,600	85,500	125,000
	15	75	53,400	62,700	120,000
	20	67	36,400	43,000	106,600
	25	59	27,300	32,600	71,200
	30	50	21,700	26,000	*53,200
	35	39	17,900	21,600	*42,300
40	26	15,100	18,400	*35,000	
50'	13	81	65,300	76,000	123,400
	15	78	53,200	62,500	120,000
	20	72	36,200	42,800	106,400
	25	66	27,100	32,400	71,000
	30	59	21,500	25,800	53,000
	35	52	17,700	21,400	42,100
40	44	14,900	18,200	*34,800	
50	23	11,300	13,800	*25,600	
60'	14	81	55,900	68,300	121,700
	15	80	52,900	62,200	120,000
	20	73	35,900	42,500	106,100
	25	70	26,800	32,100	70,700
	30	65	21,200	25,500	52,700
	35	59	17,400	21,100	41,800
40	53	14,600	17,900	34,500	
50	40	11,000	13,500	*25,300	
60	21	8,700	10,700	*19,900	
70'	16	81	48,100	56,700	116,700
	20	77	35,700	42,300	105,900
	25	73	26,600	31,900	70,500
	30	68	21,000	25,300	52,500
	35	64	17,200	20,900	41,600
	40	59	14,400	17,700	34,300
50	49	10,800	13,300	25,100	
60	37	8,500	10,500	*19,700	
70	19	6,800	8,600	*16,000	
80'	17	81	44,100	52,100	113,800
	20	80	35,400	42,000	105,600
	25	75	26,300	31,600	70,200
	30	71	20,700	25,000	52,200
	35	68	16,900	20,600	41,300
	40	64	14,100	17,400	34,000
50	55	10,500	13,000	24,800	
60	46	8,200	10,200	19,400	
70	35	6,500	8,300	*15,700	
80	18	5,300	6,800	*13,100	
90'	19	81	37,700	45,700	108,400
	20	80	35,200	41,800	105,400
	25	77	26,100	31,400	70,000
	30	73	20,500	24,800	52,000
	35	70	16,700	20,400	41,100
	40	67	13,900	17,200	33,800
50	59	10,300	12,800	24,600	
60	52	8,000	10,000	19,200	
70	43	6,300	8,100	15,500	
80	32	5,100	6,600	*12,900	
90	17	4,200	5,500	*11,000	
100'	21	81	32,700	38,900	95,800
	25	77	25,800	31,100	69,700
	30	75	20,200	24,500	51,700
	35	72	16,400	20,100	40,800
	40	69	13,600	16,900	33,500
	50	63	10,000	12,500	24,300
60	56	7,700	9,700	18,900	
70	49	6,000	7,800	15,200	
80	41	4,800	6,300	12,600	
90	31	3,900	5,200	*10,700	
100	16	3,100	4,400	* 9,100	
110'	22	81	30,300	36,500	86,300
	25	79	25,600	30,900	69,500
	30	77	20,000	24,300	51,500
	35	74	16,200	19,900	40,600
	40	71	13,400	16,700	33,200
	50	65	9,800	12,300	24,100
60	60	7,500	9,500	18,700	
70	53	5,800	7,600	15,000	
80	46	4,600	6,100	12,400	

Boom Length	Radius In Feet	Boom Angle Degrees	Free Over Side	Free Over Rear	Outriggers Extended
110'	90	39	3,700	5,000	10,500
	100	29	2,900	4,200	* 8,900
	110	15	2,400	3,500	* 7,700
120'	24	81	26,800	32,200	80,100
	25	80	25,300	30,600	69,300
	30	78	19,700	24,000	51,200
	35	75	15,900	19,600	40,300
	40	73	13,100	16,400	32,900
	50	68	9,500	12,000	23,800
	60	62	7,200	9,200	18,400
	70	57	5,500	7,300	14,700
	80	51	4,300	5,800	12,100
	90	44	3,400	4,700	10,200
	100	37	2,600	3,900	8,600
110	28	2,100	3,200	7,400	
120	14	1,600	2,600	6,400	
130'	25	82	25,100	30,400	53,000
	30	79	19,500	23,800	50,500
	35	76	15,700	19,400	40,100
	40	74	12,900	16,200	32,700
	50	69	9,300	11,800	23,600
	60	65	7,000	9,000	18,200
	70	60	5,300	7,100	14,500
	80	54	4,100	5,600	11,900
	90	49	3,200	4,500	10,000
	100	43	2,400	3,700	8,400
	110	35	1,900	3,000	7,200
120	27	1,400	2,400	6,200	
130	14	1,000	1,900	5,400	
140'	27	81	22,300	27,100	46,500
	30	79	19,200	23,500	44,000
	35	77	15,400	19,100	39,800
	40	75	12,600	15,900	32,400
	50	71	9,000	11,500	23,300
	60	67	6,700	8,700	17,900
	70	62	5,000	6,800	14,200
	80	57	3,800	5,300	11,600
	90	52	2,900	4,200	9,700
	100	47	2,100	3,400	8,100
	110	41	1,600	2,700	6,900
120	34	1,100	2,100	5,900	
130	26	—	1,600	5,100	
140	13	—	1,300	4,400	
150'	28	81	20,900	25,600	38,800
	30	80	19,000	23,300	37,300
	35	78	15,200	18,900	33,900
	40	76	12,400	15,700	31,200
	50	72	8,800	11,300	23,100
	60	68	6,500	8,500	17,700
	70	64	4,800	6,600	14,000
	80	60	3,600	5,100	11,400
	90	55	2,700	4,000	9,500
	100	50	1,900	3,200	7,900
	110	45	1,400	2,500	6,700
120	39	—	1,900	5,700	
130	33	—	1,400	4,900	
140	25	—	1,100	4,200	
150	13	—	—	3,600	
160'	30	81	18,700	23,000	31,200
	35	79	14,900	18,600	28,200
	40	77	12,100	15,400	25,900
	50	73	8,500	11,000	22,200
	60	70	6,200	8,200	17,400
	70	66	4,500	6,300	13,700
	80	62	3,300	4,800	11,100
	90	58	2,400	3,700	9,200
	100	53	1,600	2,900	7,600
	110	49	1,100	2,200	6,400
	120	44	—	1,600	5,400
130	38	—	1,100	4,600	
140	32	—	—	3,900	
150	23	—	—	3,300	
160	12	—	—	2,900	

Load ratings do not exceed 85% of tipping with crane standing level on firm, uniformly supporting surface. Outrigger ratings at radii of 20 feet or less are based on strength, not stability. Safe loads depend on ground conditions, boom length, radius of operation, condition and inflation (100 psi) of tires, and proper handling, all of which must be taken into consideration by user.

"Radius in feet" is the horizontal distance at ground level from center pin to a vertical line through the center of gravity of the suspended load. Blocks, slings, buckets and other load-carrying devices are considered part of the load. Ratings marked (*) require retractable "A" frame fully raised. Crane will self-erect 160 ft. boom plus 30 ft. No. 7HL Jib or 40 ft. of No. 6 Jib, with tackle not suspended.

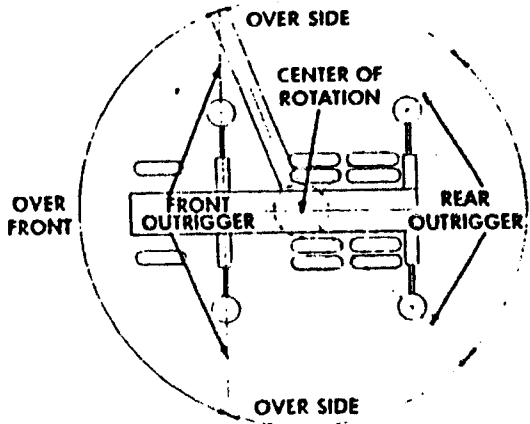


DIAGRAM NO. 2
 OUTRIGGERS EXTENDED & SET

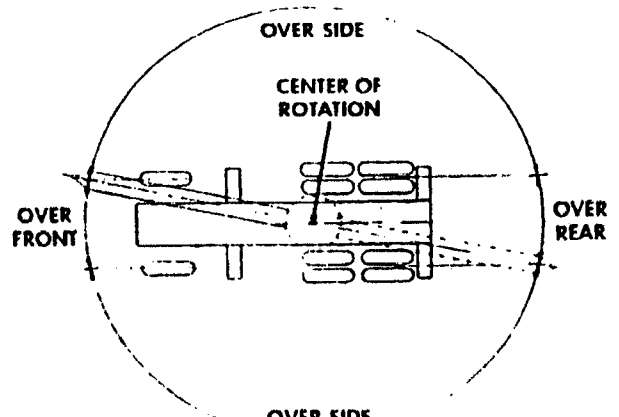
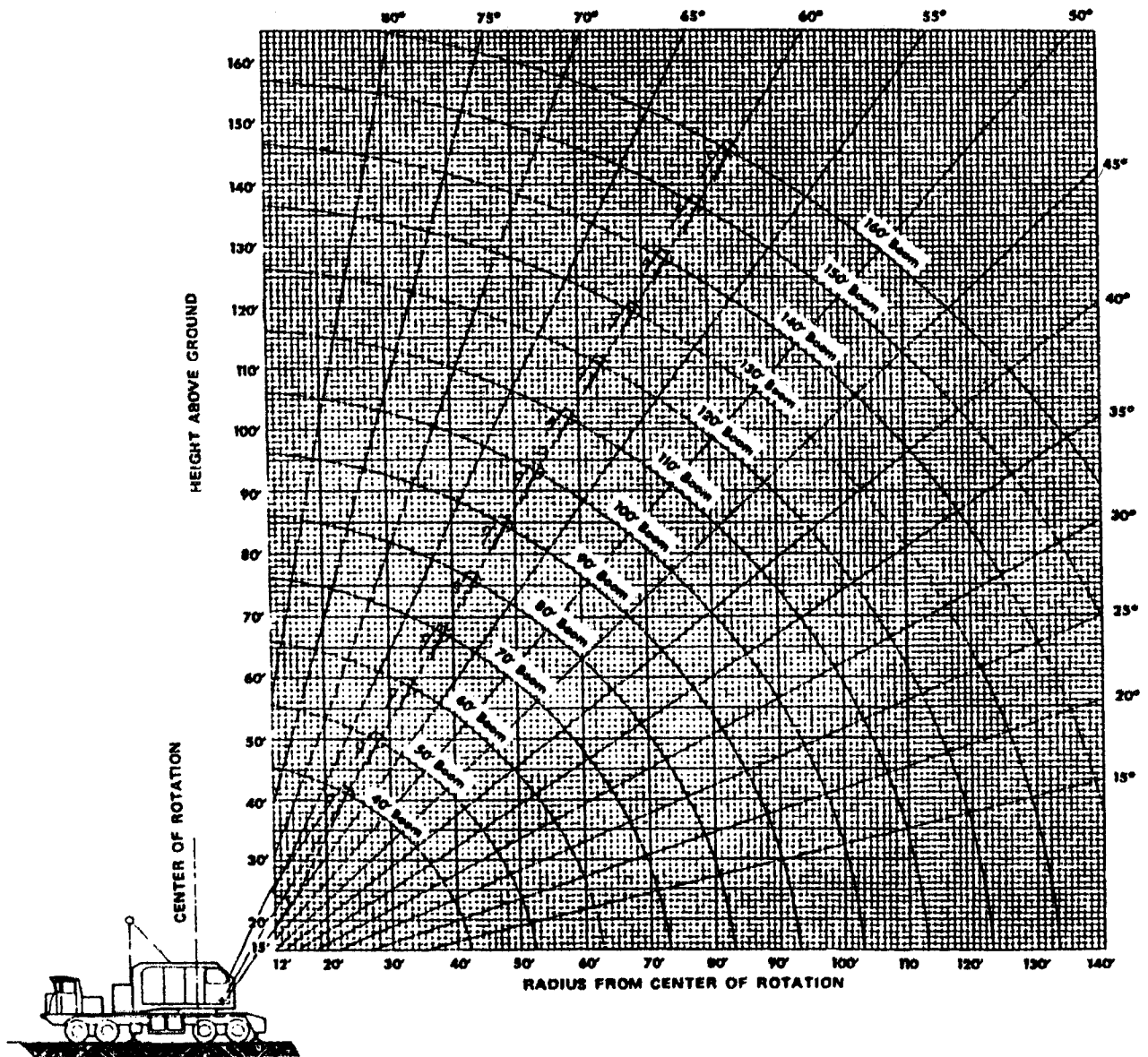


DIAGRAM NO. 1
 FREE RATINGS



No. 7HL Jib	Jib Offset "A"	Jib Length		
		30'	40'	50'
Max. Jib Capacity in Pounds	0 to 6'	*16,000	*14,000	11,000
	9'	*16,000	12,000	9,300
	12'	*14,000	10,800	8,000
	15'		9,500	7,000
	18'			6,000
Effective Jib Weight at Boom Point		1,400	1,950	2,630

Jib capacities based on 80 ft. minimum boom length, for capacities on shorter booms consult factory.

The jib load rating is the lesser of (a) the maximum jib rating, or (b) the main boom rating at the jib working radius, reduced by 200 pounds and by the weight of all suspended load-carrying devices. The maximum jib working radius is limited to the maximum radius for which the ratings are shown for the boom on which the jib is mounted. The main boom rating with the jib in place must be reduced by the effective jib weight, the weight of the main fall blocks and slings, and twice the weight of the jib tackle.

Ratings Marked Thus * Require 7/8" Dia. Load Rope.
Maximum Rating Using 3/4" Dia. Load Rope is 12500 Lbs.

