



抚顺挖掘机制造有限责任公司  
FUSHUN EXCAVATOR CORPORATION LTD.

# QUY70HD

液压履带式起重机  
HYDRAULIC CRAWLER CRANE



# QUY70HD

## 主要技术参数



Dimensions  
(单位Unit:mm)

**QUY70HD**

项目 Item	参数 Value	单位 Unit	参数 Value		
			QUY70	QUY70HD-CR	QUY70HD-ZTY
最大额定起重量 Max. load Capacity		t	70	←	
最大额定起升力矩 Max. Torque		t · m	245	←	
主臂基础臂长 Main boom length		m	12	←	
主臂最大长度 Max. boom length		m	54	←	15.5
副臂基础臂长 Tower jib length		m	9	←	
副臂最大长度 Max. Tower jib length		m	18	←	
主臂+副臂最大长度 Heavy duty boom + light boom		m	45+18	←	
起重臂变幅角度 Boom Luffing angle		°	30-80	←	
回转速度 Swing speed		rpm	3.7	←	←
行走速度 Traveling speed		km/h	1.2	←	←
变幅速度		m/min	58	←	←
主起升倍率			10	←	2
副起升倍率			1	←	
变幅倍率			12	←	←
爬坡能力 Gradeability		%	30	←	←
发动机功率 Engine rated power output		kw/r/min	182/2100	←	←
配置质量 Counter weight		t	20	←	←
接地比压MPa Ground contact pressure		MPa	0.078	←	←
整机质量(基础臂) Operating weight		t	69	←	←
吊钩组成		t	70 50 25 8	←	
主体运输尺寸(长×宽×高)		mm			
连续墙抓斗量T Diaphragm		t			12
连续墙标准抓深m Diaphragm Standard Digging Depth		m			40
标准抓斗宽mm Standard Bucket Width		mm			800
连续墙最大抓深m Max. Diaphragm Digging Depth		m			60
最大抓斗宽mm Max. Bucket Width.		mm			200

# QUY70HD 性能说明

- QUY70HD 液压履带起重机, 是我公司在吸收国内外同类型先进技术的基础上, 集我们多年的设计经验和先进技术, 为适应市场的需求而开发的起重和连续墙多功能兼容产品。用户可根据施工状况进行多种选择。
- 该机结构简单, 重心低, 稳定性好, 外形美观, 操作舒适, 采用模块化设计, 具有多功能储备, 更换维修方便等特点。主要液压元件可根据客户的要求采用力士乐原装配套件或日本川崎配套件, 或采用国产厂家的配套件。力矩限制器系统及监控系统采用数字化屏幕显示, 主要技术指标国内领先, 接近国际水平。
- 本产品采用国外最新的构造形式, 电器原件全球化采购, 备有中高档配置供客户任意选用。该机可广泛应用于交通、能源、电力、水利、石油、化工、港口、土木建筑及军事工程等。

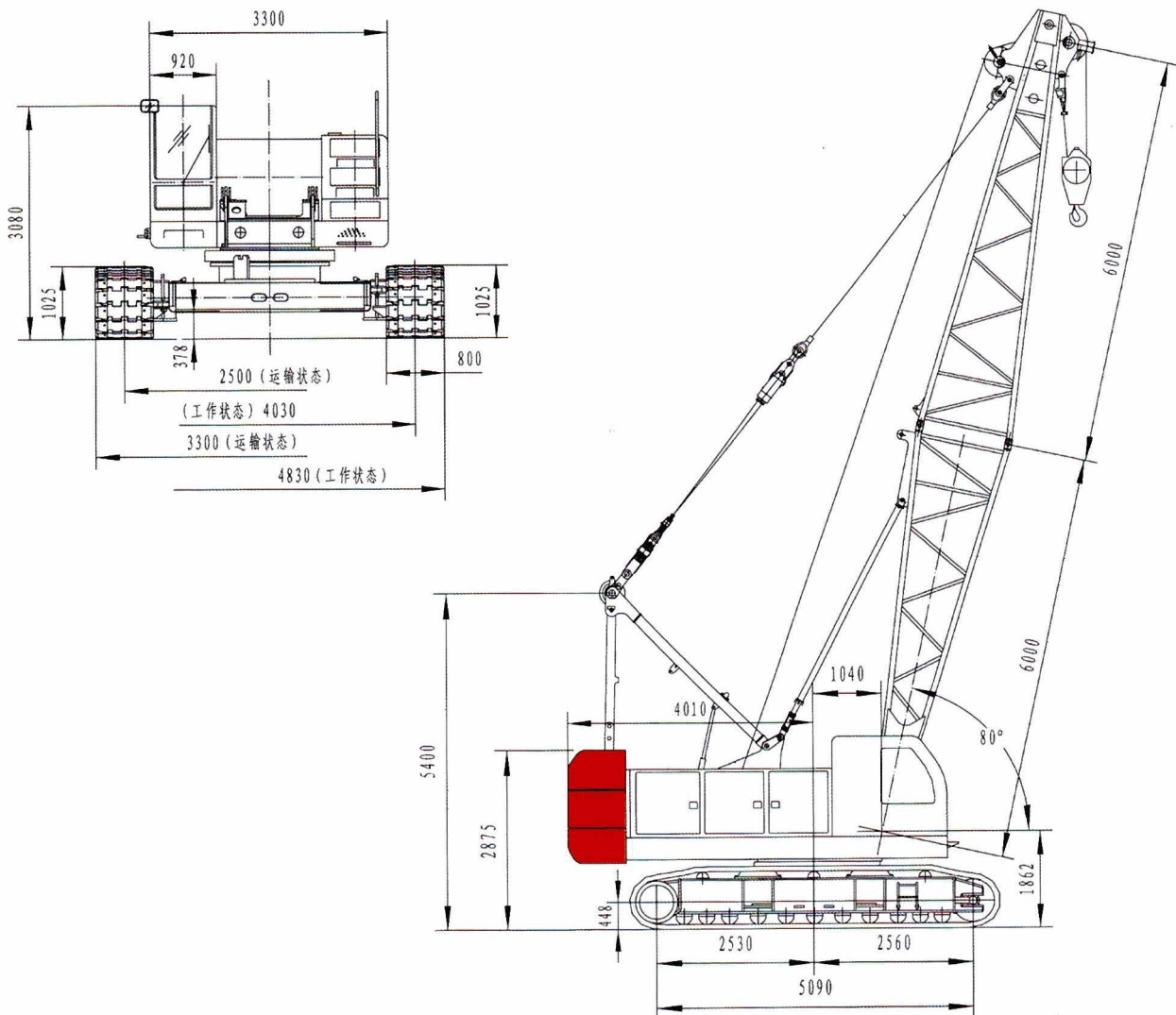
QUY70HD Hydraulic Crawler Crane from FUWA (Fushun) takes advantage of company's years' experienced design and technologies. It is a multifunctional product which is newly researched and developed on the basis of absorbing inland and foreign advanced technology to meet the market demand. It is one of our series products.

The crane has a compact structure, low barycentre and good stability, attractive outlook and comfortable working space. It adopts modular design, with the characteristics of multifunctional reserve and easy to replace and maintain. The product applies advanced structure and makes main elements procurement globalization. All the main hydraulic elements adopt Rexroth and Kawasaki products. Monitor system has digital screen display. Its main technical data exceeds inner China and close to international level. The customer can make various choices according to working condition. This machine is widely applied in the industries of Transportation, Energy, Power, and Petrochemical, to name a few.



Hydraulic Crawler Crane General Specifications  
**QUY70HD**

**QUY70HD 外形尺寸图**



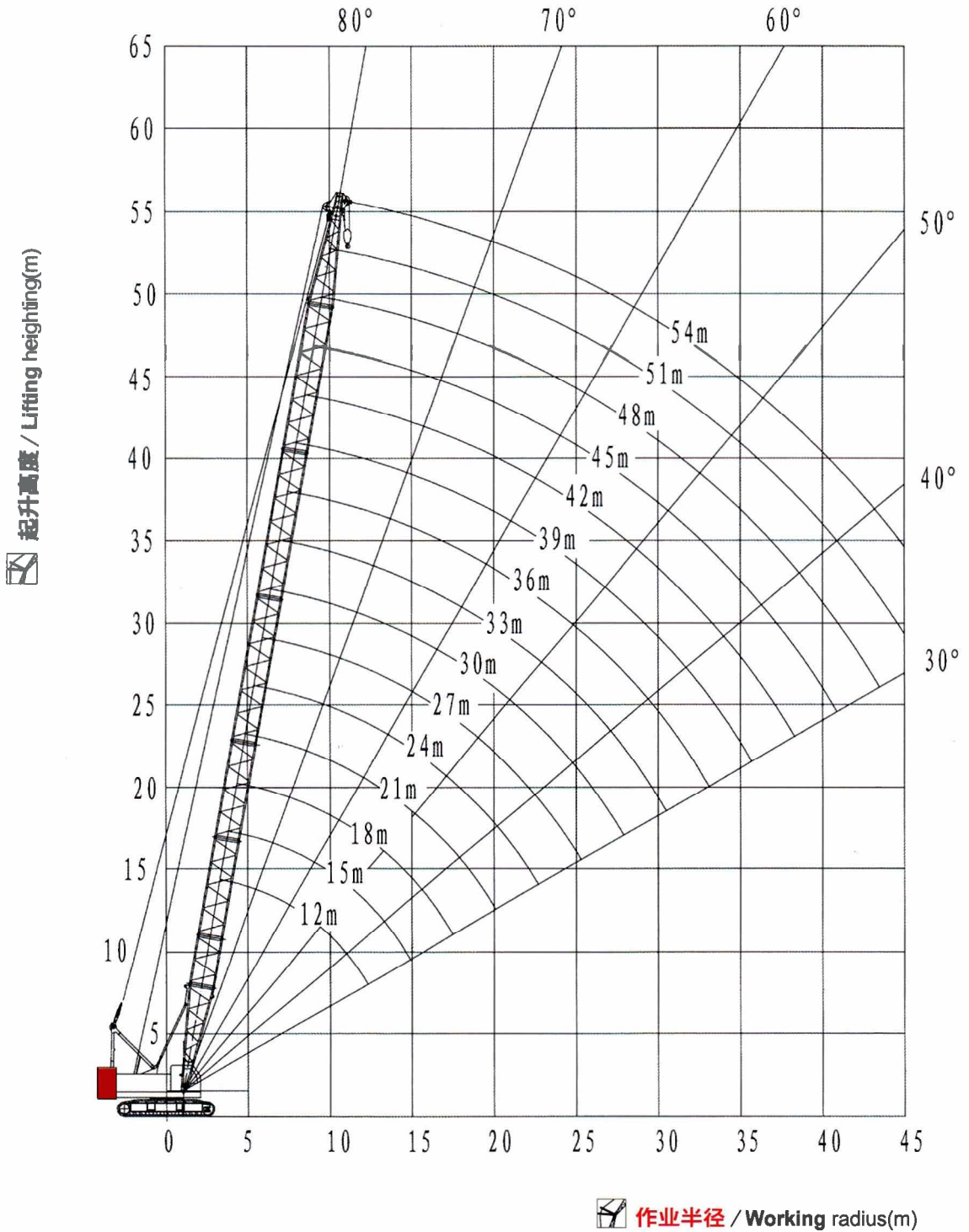
# QUY70HD

## 主臂起升范围图



Working range

**QUY70HD**



# QUY70HD

## 单主臂额定载荷表

幅度\长 (m)	12.0	15.0	18.0	21.0	24.0	27.0	30.0	33.0	36.0	39.0	42.0	45.0	48.0	51.0	54.0
3.5m	70														
4.0m	66.5	4.0m/75.2													
4.5m	62	60.5	4.5m/60.2												
5.0m	56.3	55	52.8	5.1m/50.1											
5.5m	50.3	48.4	46.6	45	5.6m/42.7										
6.0m	44.8	43.2	41.7	40.4	39	6.1m/37.1	6.6m/32.6								
7.0m	35.8	35.5	34.5	33.4	32.4	31.5	30.5	7.1m/29.0	7.7m/26.0						
8.0m	29.6	29.5	29.3	28.5	27.7	26.9	26.2	25.4	24.7	8.2m/23.5	8.7m/21.2				
9.0m	25.2	25.1	25	24.8	24.1	23.5	22.9	22.2	21.6	21.1	20.4	9.2m/19.4	9.7m/17.7		
10.0m	21.9	21.8	21.7	21.6	21.3	20.8	20.3	19.7	19.2	18.7	18.1	17.7	17.2	10.3m/16.2	10.8m/14.8
12.0m	11.6m/18.0	17.1	17.1	17	16.8	16.7	16.4	15.9	15.6	15.2	14.7	14.3	13.9	13.5	13.1
14.0m		14.1	14	13.9	13.7	13.6	13.5	13.3	13	12.7	12.3	11.9	11.6	11.2	10.9
16.0m		14.2m/13.8	11.8	11.7	11.5	11.4	11.3	11.1	11	10.8	10.4	10.2	9.9	9.5	9.2
18.0m			16.8m/11.0	10	9.8	9.8	9.6	9.5	9.4	9.3	9	8.8	8.5	8.2	7.9
20.0m				19.4m/9.1	8.6	8.5	8.3	8.2	8.1	8	7.8	7.7	7.4	7.1	6.9
22.0m					7.5	7.4	7.3	7.1	7.1	6.9	6.8	6.7	6.5	6.2	6
24.0m					22.0m/7.5	6.6	6.5	6.3	6.2	6.1	5.9	5.8	5.7	5.5	5.3
26.0m						24.6m/6.4	5.8	5.6	5.5	5.4	5.2	5.1	5	4.8	4.7
28.0m							27.2m/5.4	5	4.9	4.8	4.6	4.5	4.4	4.2	4.1
30.0m								29.8m/4.5	4.4	4.3	4.1	4	3.9	3.7	3.6
32.0m									3.9	3.8	3.7	3.6	3.4	3.3	3.2
34.0m									32.4m/3.9	3.4	3.3	3.2	3.1	2.9	2.8
36.0m										35.0m/3.3	2.9	2.8	2.7	2.5	2.4
38.0m											37.6m/2.7	2.5	2.4	2.2	2.1
40.0m												2.2	2.1	2	1.9
42.0m												40.2m/2.2	1.9	1.7	1.6
44.0m													42.8m/1.8	1.5	1.4
46.0m														1.3	1.2
48.0m															48.0m/1.0



Rated Loads  
of Main Boom

**QUY70HD**

# QUY70HD

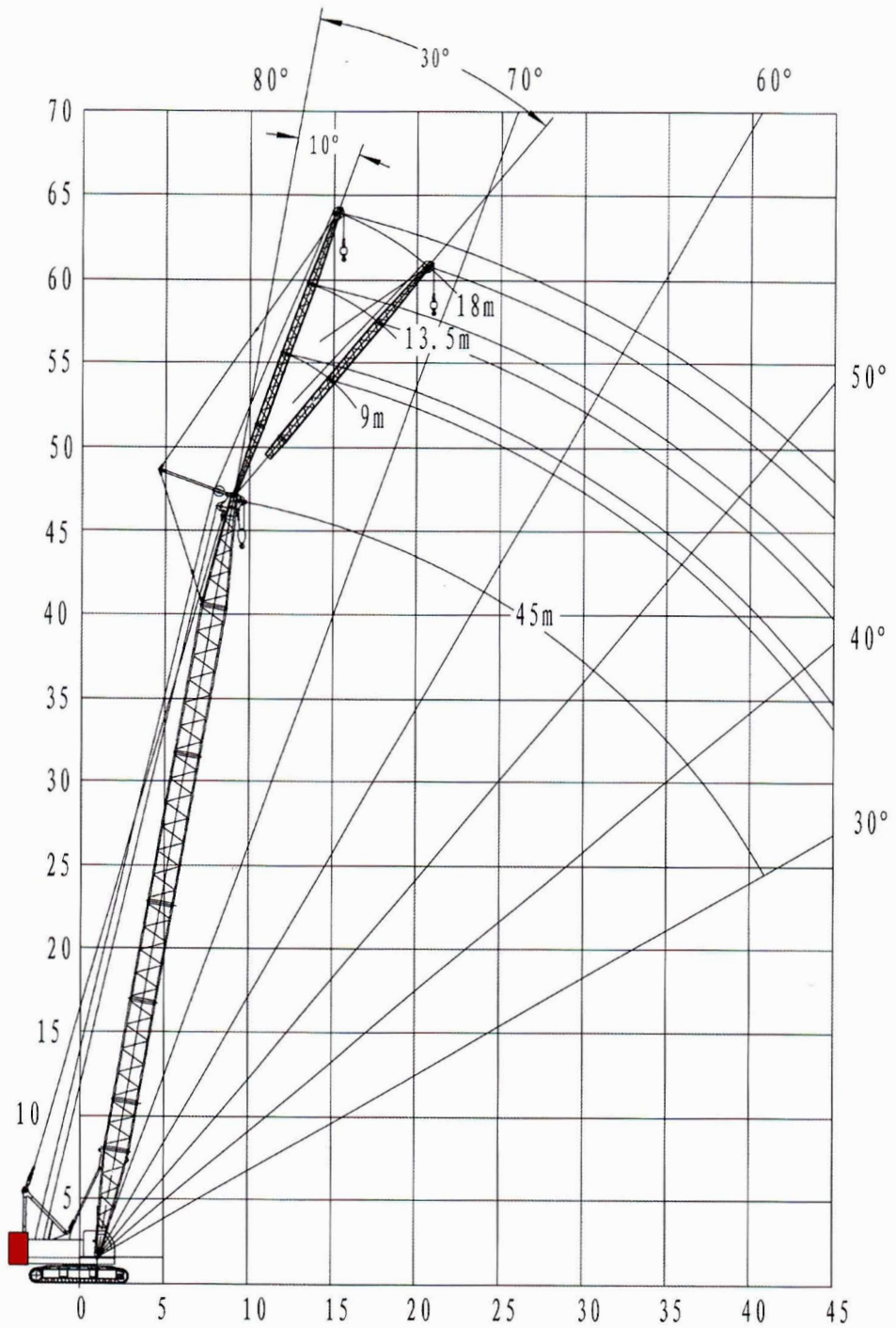
## 固定副臂起升范围图



Working range

QUY70HD

起升高度 / Lifting heighting(m)



作业半径 / Working radius(m)

# QUY70HD

## 固定副臂额定载荷表

单位Unit: 吨 t

主臂长(m)	24.0						27.0					
	9.0		13.5		18.0		9.0		13.5		18.0	
幅度长(m)	副臂角度(°)						副臂角度(°)					
	15	30	15	30	15	30	15	30	15	30	15	30
9												
10	7						7					
12	7	7	7				7	7	7			
14	7	7	7		6.2		7	7	7	7		
16	7	7	7	7	6		7	7	7	7	6.1	
18	7	7	7	7	5.9	5.5	7	7	7	7	6	
20	7	7	7	7	5.8	5.4	7	7	7	7	5.8	5.5
22	7	7	6.9	7	5.7	5.4	6.8	6.9	6.7	6.9	5.7	5.4
24	6.3	6.3	6.3	6.4	5.6	5.3	6.1	6.2	6.1	6.3	5.6	5.3
26	5.6	5.7	5.8	5.9	5.4	5.2	5.5	5.6	5.6	5.7	5.5	5.2
28	5.1		5.2	5.3	5.3	5.1	5	5	5.1	5.2	5.1	5.2
30	4.6		4.7	4.8	4.8	4.9	4.5		4.6	4.7	4.7	4.8
32			4.3		4.4	4.5	4.1		4.2	4.3	4.3	4.4
34			4		4	4.1			3.9		4	4
36					3.7				3.6		3.6	3.7
38					3.4						3.4	
40											3.1	



Rated Loads of Fly Jib

**QUY70HD**

主臂长(m)	42						45.0					
	9.0		13.5		18.0		9.0		13.5		18.0	
幅度长(m)	副臂角度(°)						副臂角度(°)					
	15	30	15	30	15	30	15	30	15	30	15	30
16	7	7	7				7	7	7			
18	7	7	7	7	6.1		6.8	7	6.8		6.2	
20	6.2	6.4	6.3	6.6	6		6	6.2	6.1	6.4	6	
22	5.6	5.8	5.6	5.9	5.6	5.5	5.4	5.6	5.4	5.7	5.4	5.5
24	5	5.2	5.1	5.3	5	5.3	4.8	5	4.9	5.1	4.9	5.2
26	4.5	4.7	4.6	4.8	4.6	4.8	4.4	4.5	4.4	4.6	4.4	4.7
28	4.1	4.2	4.2	4.3	4.2	4.4	3.9	4.1	4	4.2	4	4.3
30	3.7	3.9	3.8	4	3.8	4	3.6	3.7	3.6	3.8	3.7	3.9
32	3.4	3.5	3.5	3.6	3.5	3.7	3.3	3.4	3.3	3.5	3.3	3.6
34	3.1	3.2	3.2	3.3	3.2	3.4	3	3.1	3	3.2	3.1	3.3
36	2.9	2.9	2.9	3	3	3.1	2.7	2.8	2.8	2.9	2.8	3
38	2.6	2.6	2.7	2.8	2.7	2.9	2.5	2.6	2.6	2.7	2.6	2.7
40	2.3		2.5	2.6	2.5	2.6	2.3	2.3	2.4	2.4	2.4	2.5
42	2.1		2.2		2.3	2.4	2		2.2	2.2	2.2	2.3
44	1.9		2		2.1	2.2	1.8		1.9		2	2.1
46			1.8		1.9	2	1.6		1.8		1.9	2
48			1.7		1.8		1.5		1.6		1.7	1.8
50					1.6				1.4		1.5	

---

地 址: 辽宁省抚顺市顺城区双阳路2号  
电 话: 0413-7647989  
传 真: 0413-7642419 邮 编: 113126  
网 址: www.cnfuwa.com 电子邮箱: sale@cnfuwa.com

---

Add:No.Shuangyang Road.Shuncheng District.Fushun Liaoning.China  
Tel:+86-413-7649117 Fax:+86-413-7642766  
E-mail:export@cnfuwa.com  
http://www.cnfuwa.com/



---

技术参数如有更改恕不另行通知  
Specifications may vary without prior notice