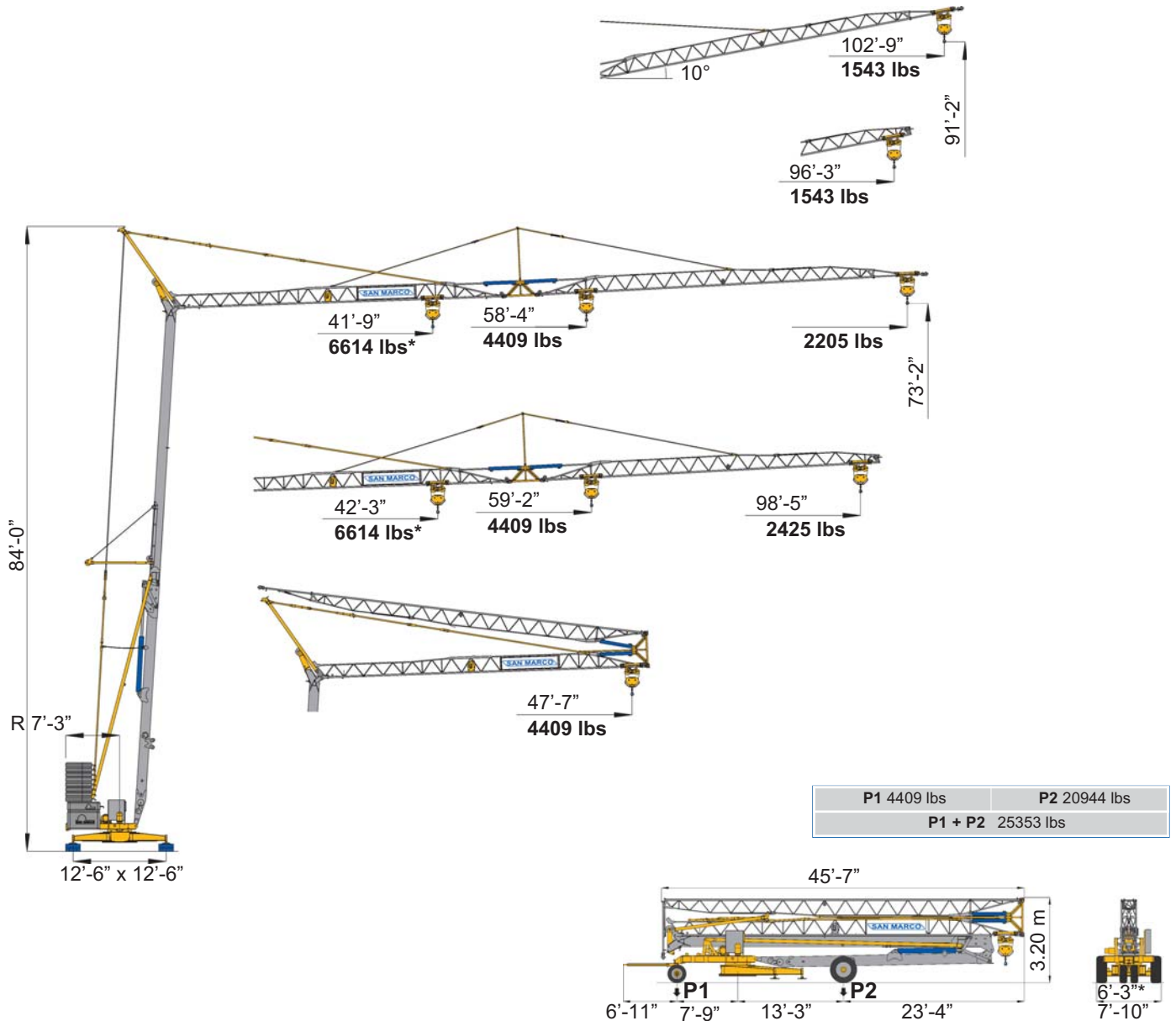


- IT** Gru automatica idraulica
- UK** Automatic hydraulic crane
- DE** Automatischer hydraulischer Kran
- ES** Grua automatica hidraulica
- FR** Grue automatique hydraulique

# SMH 323

## Triverter 444



- IT** Diagrammi di carico
- UK** Loads diagrams
- DE** Lastkurven
- ES** Curvas de carga
- FR** Courbes de charges

Braccio orizzontale	lbs	6614	5512	4409	4189	3968	3748	3527	3307	3086	2866	2646	2425	2205
Horizontal jib	ft	42'-3"	49'-1"	59'-2"	61'-9"	64'-7"	67'-9"	71'-4"	75'-4"	79'-10"	85'	90'-11"	98'-5"	98'-5"
Waagerechter ausleger	ft	41'-9"	48'-5"	58'-4"	60'-11"	63'-9"	66'-10"	70'-4"	74'-3"	78'-8"	83'-9"	89'-7"	96'-4"	105'
Flecha horizontal	ft	41'-9"	48'-5"	58'-4"	60'-11"	63'-9"	66'-10"	70'-4"	74'-3"	78'-8"	83'-9"	89'-7"	96'-4"	105'
Fleche horizontale	ft	41'-9"	48'-5"	58'-4"	60'-11"	63'-9"	66'-10"	70'-4"	74'-3"	78'-8"	83'-9"	89'-7"	96'-4"	105'

Braccio impennato	lbs	1543
Inclined jib	ft	96'-3"
Schräggestellter ausleger	ft	98'-5"
Flecha inclinada	ft	102'-9"
Fleche relevée	ft	105'
	°	10°

Freccia chiusa	lbs	4409
Closed jib	ft	47'-7"
Auslegerspitze zu		
Flecha plegada		
Fleche fermée		



DIN 15018 H1 B3  
ISO 4301



