

# Valla 120 E



## Electric battery operated Mobile Crane Max. Capacity **Lbs. 26,400**



**Valla**

| OUTREACH (Ft) | CAPACITY (Lbs.) |
|---------------|-----------------|
| 6             | <b>19,000</b>   |
| 12            | <b>8,500</b>    |
| 24            | <b>4,000</b>    |

### TECHNICAL DATA

**CRANE FRAME:** six-wheelers frame fabricated from preformed and welded steel plate with built-in counterweight .

**DRIVING:** by DC 12 kw 72V reversible electric motor, controlled by inverter.

**BATTERY:** 72V 820Ah battery, battery meter on dashboard.

**BRAKES:** foot hydraulically operated drum brakes. Parking hand brake hydraulically operated.

**SUSPENSION:** oscillating rear axle with mechanical lock.

**STEERING:** power steering operated through own hydraulic circuit by a hydraulic cylinder fitted between the articulated power unit and the crane frame allowing 130° steering fitted with safety valves and filters. 1 kW – 72 V motor driven pump.

**WHEELS:** nr. 2 rear superelastic tires 27 x 10 R12" - nr. 4 front superelastic 7.00-12

**BOOM:** fabricated from preformed and welded quality steel plate. Nr.4 telescoping sections: 1 fixed and 3 hydraulically telescoping. Fitted with adjustable nylon wear pads.

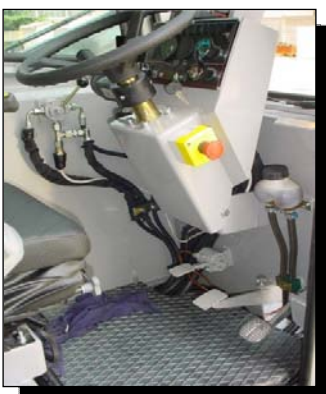
**BOOM CONTROL:** distributor by proportional levers. Motor driven pump 8kW 72V.

**LMI:** electronic Load Moment Indicator. Display showing lifted load, max allowed load, tilting percentage, operating radius, angle, telescope and light indicators on the operative mode.

**TOTAL WEIGHT:** approx. Lbs. 29,800

**MAX. CAPACITY:** Lbs. 26,400

**Options on request:** hydraulic winch; chain hoists; carry-deck; battery charger (on board and standing); manual and hydraulic jibs; cable; remote control; radio remote control; man bucket and relevant certification as aerial platform; non marking tires; full set of road lights.



Data subject to be changed without any previous notice. Pictures may differ from technical description.

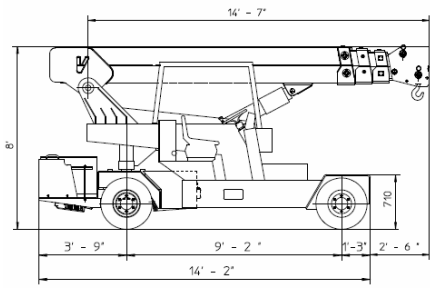
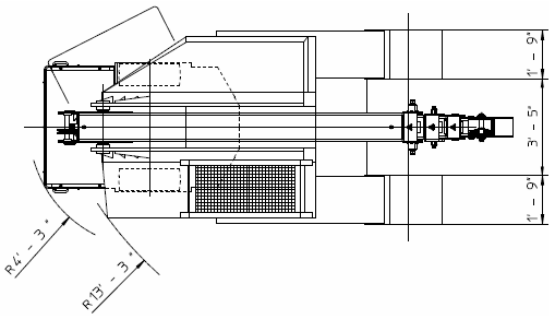
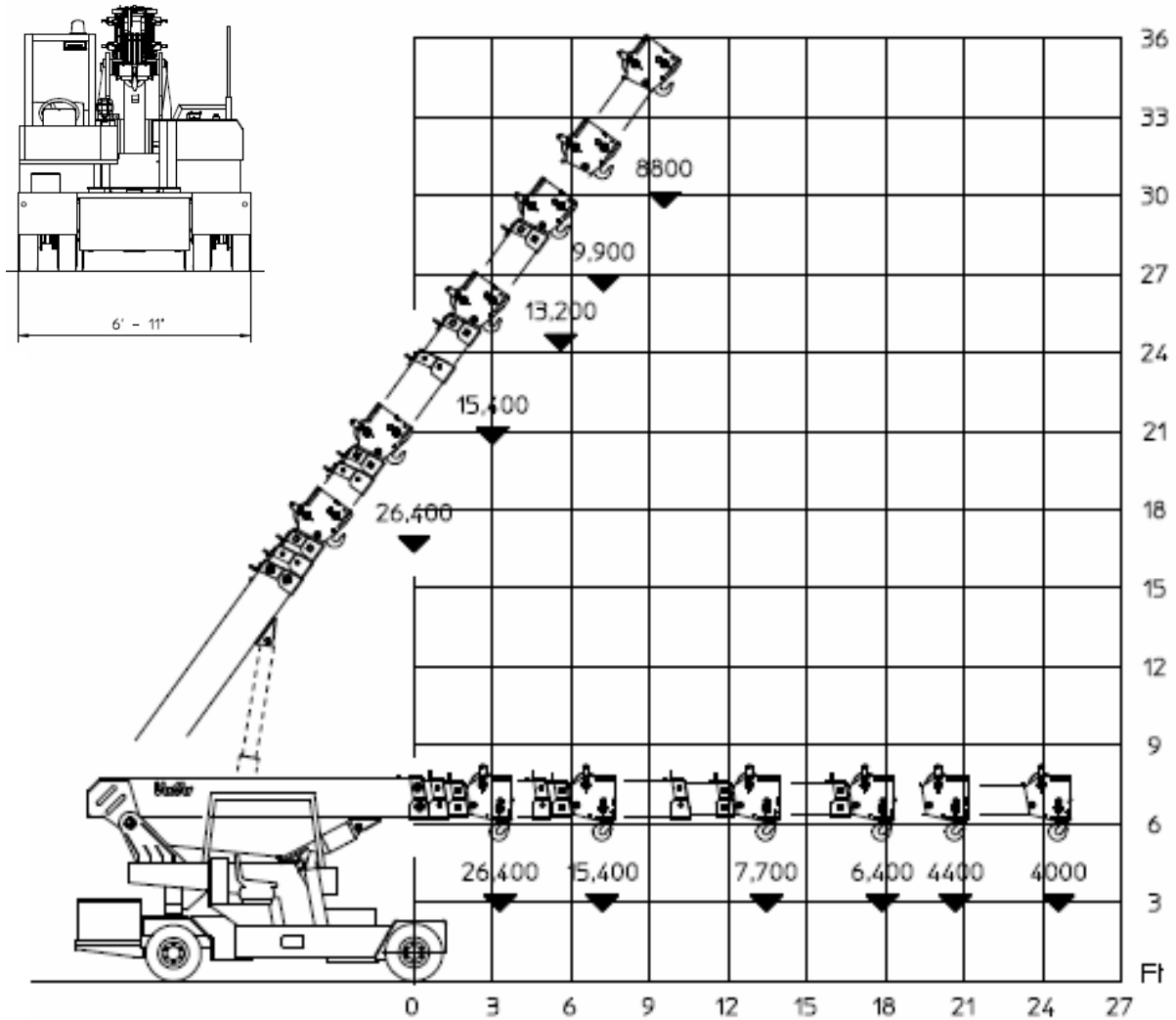
# Valla



# 120 E



VALLA mobile crane mod. 120E complies with the following standards:  
 -2006/42/CE  
 -UNIEN13000  
 -I.S.P.E.S.L.



Lbs./ft



Valla a division of CVS Ferrari Srl  
 Via Piacenza, 45 - 29010 Calendasco (Piacenza) - ITALIA  
 Tel. +39 0523 762025 / 752004 - Fax +39 0523 760531  
 e-mail: info@valla.com - www.valla.com

Data subject to be changed without any previous notice. Pictures may differ from technical description.