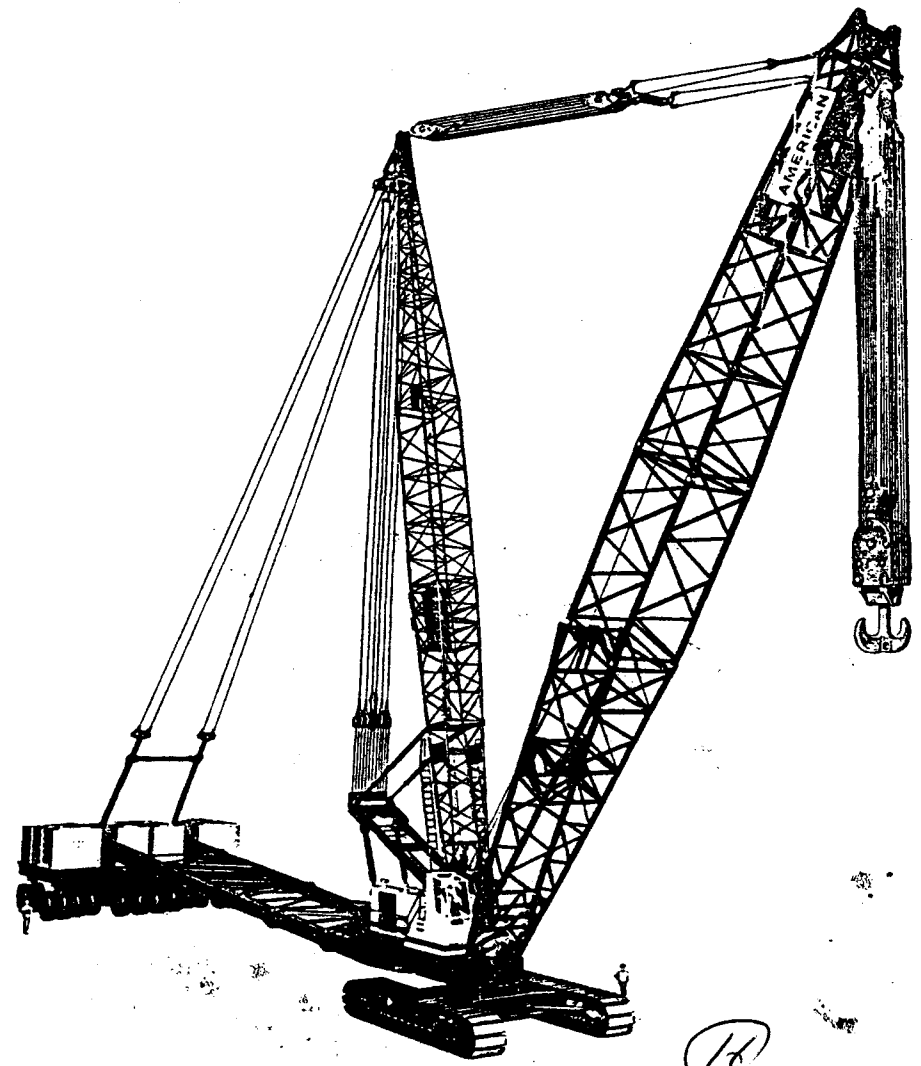


# 1100 SERIES SUPER SKY HORSE MACHINE SPECIFICATIONS



R822 FORM NO. 1100-SSH-6 PRINTED IN U.S.A.  
SOLD & SERVICED BY:



CONSTRUCTION EQUIPMENT GROUP  
63 SO. ROBERT ST. ST. PAUL, MN 55107

amhoist AMERICAN HOIST & DERRICK COMPANY  
AN EQUAL OPPORTUNITY EMPLOYER

16

# SUPER SKY HORSE RATINGS

with 54 foot counterweight position

| Boom and Mast Length          | Radius In Feet | Boom Angle Degrees | Crane Lift Rating Length |
|-------------------------------|----------------|--------------------|--------------------------|
| 125 foot boom & 130 foot mast | 27             | 79.72              | 1334530                  |
|                               | 30             | 78.32              | 1187200                  |
|                               | 35             | 75.95              | 995420                   |
|                               | 40             | 73.56              | 857870                   |
|                               | 50             | 68.68              | 665590                   |
| 150 foot boom & 130 foot mast | 60             | 63.61              | 538030                   |
|                               | 70             | 58.29              | 448650                   |
|                               | 80             | 52.63              | 382810                   |
|                               | 90             | 46.48              | 329150                   |
|                               | 100            | 39.58              | 289410                   |
| 110                           | 31.41          | 254050             |                          |
|                               | 20.34          | 224340             |                          |

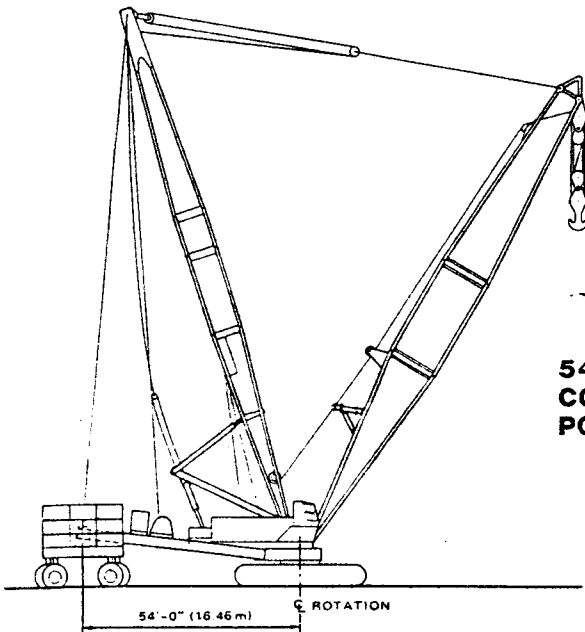
| Boom and Mast Length          | Radius In Feet | Boom Angle Degrees | Crane Lift Rating Length |
|-------------------------------|----------------|--------------------|--------------------------|
| 150 foot boom & 130 foot mast | 31             | 79.90              | 1144610                  |
|                               | 35             | 78.34              | 995950                   |
|                               | 40             | 76.38              | 857380                   |
|                               | 50             | 72.39              | 663780                   |
|                               | 60             | 68.30              | 535480                   |
| 250 foot boom & 130 foot mast | 70             | 64.09              | 445720                   |
|                               | 80             | 59.71              | 379760                   |
|                               | 90             | 55.12              | 325970                   |
|                               | 100            | 50.24              | 286480                   |
|                               | 110            | 44.97              | 251350                   |
| 120                           | 39.13          | 222280             |                          |
|                               | 32.40          | 199110             |                          |
|                               | 24.00          | 179070             |                          |
|                               | 140            | 54.32              | 142420                   |
| 160                           | 51.42          | 126670             |                          |
|                               | 48.39          | 112680             |                          |
|                               | 45.21          | 100710             |                          |
|                               | 41.84          | 93110              |                          |
|                               | 38.23          | 8390               |                          |
| 210                           | 34.29          | 7130               |                          |
|                               | 29.89          | 65950              |                          |
|                               | 24.77          | 58560              |                          |
|                               | 230            | 45.32              | 20700                    |

| Boom and Mast Length          | Radius In Feet | Boom Angle Degrees | Crane Lift Rating Length |
|-------------------------------|----------------|--------------------|--------------------------|
| 250 foot boom & 130 foot mast | 49             | 79.79              | 663380                   |
|                               | 50             | 79.56              | 646820                   |
|                               | 60             | 77.21              | 516230                   |
|                               | 70             | 74.85              | 426250                   |
|                               | 80             | 72.45              | 359590                   |
| 350 foot boom & 180 foot mast | 90             | 70.02              | 305760                   |
|                               | 100            | 67.55              | 266530                   |
|                               | 110            | 65.03              | 231390                   |
|                               | 120            | 62.46              | 202380                   |
|                               | 130            | 59.83              | 181700                   |
| 140                           | 57.12          | 160570             |                          |
|                               | 54.32          | 142420             |                          |
|                               | 160            | 51.42              | 126670                   |
|                               | 170            | 48.39              | 112680                   |
|                               | 180            | 45.21              | 100710                   |
| 190                           | 41.84          | 93110              |                          |
|                               | 38.23          | 8390               |                          |
|                               | 210            | 34.29              | 7130                     |
|                               | 220            | 29.89              | 65950                    |
|                               | 230            | 24.77              | 58560                    |

| Boom and Mast Length          | Radius In Feet | Boom Angle Degrees | Crane Lift Rating Length |
|-------------------------------|----------------|--------------------|--------------------------|
| 350 foot boom & 180 foot mast | 66             | 79.91              | 433810                   |
|                               | 70             | 79.25              | 399510                   |
|                               | 80             | 77.57              | 333630                   |
|                               | 90             | 75.89              | 284040                   |
|                               | 100            | 74.19              | 240550                   |
| 210                           | 72.48          | 205390             |                          |
|                               | 120            | 70.75              | 180900                   |
|                               | 130            | 69.00              | 156050                   |
|                               | 140            | 67.23              | 134970                   |
|                               | 150            | 65.43              | 116360                   |
| 160                           | 63.61          | 101150             |                          |
|                               | 170            | 61.76              | 91960                    |
|                               | 180            | 59.88              | 79260                    |
|                               | 190            | 57.95              | 68020                    |
|                               | 200            | 55.99              | 57980                    |
| 210                           | 53.98          | 48980              |                          |
|                               | 220            | 51.92              | 40850                    |
|                               | 230            | 49.79              | 33500                    |
|                               | 240            | 47.59              | 26800                    |
|                               | 250            | 45.32              | 20700                    |
| 260                           | 42.94          | 15110              |                          |
|                               | 40.46          | 9970               |                          |
|                               | 37.84          | 5250               |                          |
|                               | 35.05          | 890                |                          |

11320.74

All ratings are in compliance with applicable United States codes in effect at time of publication.



**54 FT. COUNTERWEIGHT POSITION**

# SUPER SKY HORSE RATINGS

with 16.5 meter counterweight position

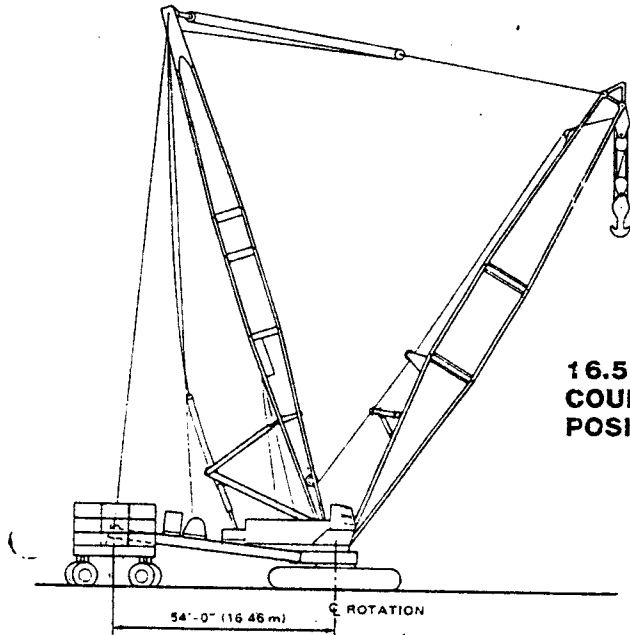
| Boom and Mast Length              | Radius In Meters | Boom Angle Degrees | Crane Lift Rating (Kg.) |
|-----------------------------------|------------------|--------------------|-------------------------|
| 38.1 meter boom & 39.6 meter mast | 8.2              | 79.72              | 605340                  |
|                                   | 9.1              | 78.32              | 535510                  |
|                                   | 10.7             | 75.95              | 451520                  |
|                                   | 12.2             | 73.56              | 389130                  |
|                                   | 15.2             | 68.68              | 301910                  |
| 18.3                              | 63.61            | 244050             |                         |
|                                   | 21.3             | 58.29              | 203510                  |
|                                   | 24.4             | 52.63              | 173640                  |
|                                   | 27.4             | 46.48              | 149300                  |
|                                   | 30.5             | 39.58              | 131280                  |
| 33.5                              | 31.41            | 115240             |                         |
|                                   | 36.6             | 20.34              | 101760                  |

| Boom and Mast Length              | Radius In Meters | Boom Angle Degrees | Crane Lift Rating (Kg.) |
|-----------------------------------|------------------|--------------------|-------------------------|
| 45.7 meter boom & 39.6 meter mast | 9.4              | 79.90              | 519200                  |
|                                   | 10.7             | 78.34              | 451760                  |
|                                   | 12.2             | 76.38              | 386910                  |
|                                   | 15.2             | 72.39              | 301090                  |
|                                   | 18.3             | 68.30              | 242890                  |
| 21.3                              | 64.09            | 202150             |                         |
|                                   | 24.4             | 59.71              | 172260                  |
|                                   | 27.4             | 55.12              | 147860                  |
|                                   | 30.5             | 50.24              | 129950                  |
|                                   | 33.5             | 44.97              | 114010                  |
| 36.6                              | 39.13            | 100830             |                         |
|                                   | 32.40            | 90320              |                         |
|                                   | 42.7             | 24.00              | 81230                   |

| Boom and Mast Length              | Radius In Meters | Boom Angle Degrees | Crane Lift Rating (Kg.) |
|-----------------------------------|------------------|--------------------|-------------------------|
| 76.2 meter boom & 39.6 meter mast | 14.9             | 79.79              | 300910                  |
|                                   | 15.2             | 79.56              | 293400                  |
|                                   | 18.3             | 77.21              | 234430                  |
|                                   | 21.3             | 74.85              | 193350                  |
|                                   | 24.4             | 72.45              | 163290                  |
| 27.4                              | 70.02            | 138690             |                         |
|                                   | 30.5             | 67.55              | 120910                  |
|                                   | 33.5             | 65.03              | 104950                  |
|                                   | 36.6             | 62.46              | 91800                   |
|                                   | 39.6             | 59.83              | 82420                   |
| 42.7                              | 57.12            | 72830              |                         |
|                                   | 54.32            | 64600              |                         |
|                                   | 48.8             | 51.42              | 57460                   |
|                                   | 51.8             | 48.39              | 51200                   |
|                                   | 54.9             | 45.21              | 45680                   |
| 57.9                              | 41.84            | 42330              |                         |
|                                   | 61.0             | 38.23              | 37730                   |
|                                   | 64.0             | 34.29              | 33625                   |
|                                   | 67.1             | 29.89              | 29910                   |
|                                   | 70.1             | 24.77              | 26560                   |

| Boom and Mast Length               | Radius In Meters | Boom Angle Degrees | Crane Lift Rating (Kg.) |
|------------------------------------|------------------|--------------------|-------------------------|
| 106.7 meter boom & 54.9 meter mast | 20.1             | 79.91              | 196770                  |
|                                    | 21.3             | 79.25              | 181220                  |
|                                    | 24.4             | 77.57              | 151330                  |
|                                    | 27.4             | 75.89              | 128840                  |
|                                    | 30.5             | 74.19              | 109110                  |
| 33.5                               | 72.48            | 93160              |                         |
|                                    | 36.6             | 70.75              | 82060                   |
|                                    | 39.6             | 69.00              | 70780                   |
|                                    | 42.7             | 67.23              | 61220                   |
|                                    | 45.7             | 65.43              | 53010                   |
| 48.8                               | 63.61            | 45880              |                         |
|                                    | 51.8             | 61.76              | 41710                   |
|                                    | 54.9             | 59.88              | 35950                   |
|                                    | 57.9             | 57.95              | 30850                   |
|                                    | 61.0             | 55.99              | 26300                   |
| 64.0                               | 53.98            | 22220              |                         |
|                                    | 67.1             | 51.92              | 18520                   |
|                                    | 70.1             | 49.79              | 15200                   |
|                                    | 73.2             | 47.59              | 12160                   |
|                                    | 76.2             | 45.32              | 9390                    |
| 79.2                               | 42.94            | 6850               |                         |
|                                    | 82.3             | 40.46              | 4520                    |
|                                    | 85.3             | 37.84              | 2350                    |
|                                    | 88.4             | 35.05              | 400                     |

All ratings are in compliance with applicable United States codes in effect at time of publication.



**16.5 m COUNTERWEIGHT POSITION**

17

# SUPER SKY HORSE RATINGS

with 73 foot counterweight position

| Boom and Mast Length          | Radius In Feet | Boom Angle Degrees | Crane Lift Rating (Lbs.) |
|-------------------------------|----------------|--------------------|--------------------------|
| 125 foot boom & 130 foot mast | 27             | 79.72              | 1856110                  |
|                               | 30             | 78.32              | 1651570                  |
|                               | 35             | 75.95              | 1390260                  |
|                               | 40             | 73.56              | 1200160                  |
|                               | 50             | 68.68              | 937210                   |
| 130 foot boom & 130 foot mast | 60             | 63.61              | 764370                   |
|                               | 70             | 58.29              | 640880                   |
|                               | 80             | 52.63              | 549410                   |
|                               | 90             | 46.48              | 479020                   |
|                               | 100            | 39.52              | 420760                   |
| 110 foot boom & 130 foot mast | 110            | 31.41              | 375200                   |
|                               | 120            | 20.34              | 334750                   |

| Boom and Mast Length          | Radius In Feet | Boom Angle Degrees | Crane Lift Rating (Lbs.) |
|-------------------------------|----------------|--------------------|--------------------------|
| 250 foot boom & 130 foot mast | 49             | 79.79              | 947830                   |
|                               | 50             | 79.56              | 925240                   |
|                               | 60             | 77.21              | 748850                   |
|                               | 70             | 74.85              | 622980                   |
|                               | 80             | 72.45              | 530280                   |
| 130 foot boom & 180 foot mast | 90             | 70.02              | 459460                   |
|                               | 100            | 67.55              | 400550                   |
|                               | 110            | 65.33              | 355780                   |
|                               | 120            | 62.46              | 315980                   |
|                               | 130            | 59.83              | 285690                   |
| 140 foot boom & 180 foot mast | 140            | 57.12              | 256920                   |
|                               | 150            | 54.32              | 232160                   |
|                               | 160            | 51.42              | 210630                   |
|                               | 170            | 48.39              | 194750                   |
|                               | 180            | 45.21              | 177740                   |
| 190 foot boom & 180 foot mast | 190            | 41.84              | 162610                   |
|                               | 200            | 38.23              | 149080                   |
|                               | 210            | 34.29              | 136920                   |
|                               | 220            | 29.89              | 125920                   |
|                               | 230            | 24.77              | 115950                   |

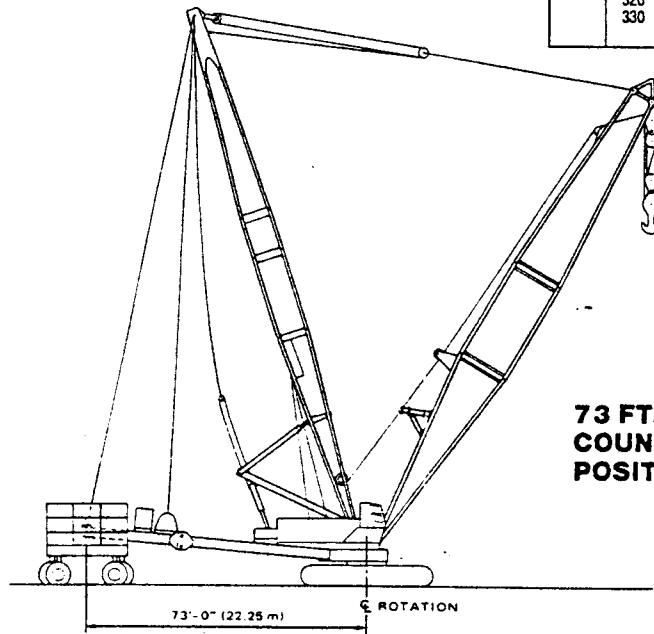
| Boom and Mast Length          | Radius In Feet | Boom Angle Degrees | Crane Lift Rating (Lbs.) |
|-------------------------------|----------------|--------------------|--------------------------|
| 350 foot boom & 180 foot mast | 66             | 79.91              | 598920                   |
|                               | 70             | 79.25              | 591600                   |
|                               | 80             | 77.57              | 499950                   |
|                               | 90             | 75.89              | 430020                   |
|                               | 100            | 74.19              | 375300                   |
| 110 foot boom & 230 foot mast | 110            | 72.48              | 327410                   |
|                               | 120            | 70.75              | 291830                   |
|                               | 130            | 69.00              | 258220                   |
|                               | 140            | 67.23              | 229640                   |
|                               | 150            | 65.43              | 205040                   |
| 160 foot boom & 230 foot mast | 160            | 63.61              | 187460                   |
|                               | 170            | 61.76              | 168360                   |
|                               | 180            | 59.88              | 151490                   |
|                               | 190            | 57.95              | 136490                   |
|                               | 200            | 55.99              | 123070                   |
| 210 foot boom & 230 foot mast | 210            | 53.98              | 111000                   |
|                               | 220            | 51.92              | 100080                   |
|                               | 230            | 49.79              | 93780                    |
|                               | 240            | 47.59              | 84400                    |
|                               | 250            | 45.32              | 75830                    |
| 260 foot boom & 230 foot mast | 260            | 42.94              | 67970                    |
|                               | 270            | 40.46              | 60740                    |
|                               | 280            | 37.84              | 54070                    |
|                               | 290            | 35.05              | 47900                    |
|                               | 300            | 32.05              | 42190                    |
| 310 foot boom & 230 foot mast | 310            | 28.77              | 36900                    |
|                               | 320            | 25.09              | 31980                    |
|                               | 330            | 20.80              | 27430                    |

| Boom and Mast Length          | Radius In Feet                | Boom Angle Degrees | Crane Lift Rating (Lbs.) |
|-------------------------------|-------------------------------|--------------------|--------------------------|
| 79 foot boom & 230 foot mast  | 79                            | 79.93              | 376030                   |
|                               | 80                            | 79.80              | 376030                   |
|                               | 90                            | 78.42              | 376030                   |
|                               | 100                           | 77.04              | 354940                   |
|                               | 110                           | 75.65              | 306820                   |
| 120 foot boom & 230 foot mast | 120                           | 74.25              | 271360                   |
|                               | 130                           | 72.84              | 237610                   |
|                               | 140                           | 71.42              | 208920                   |
|                               | 150                           | 69.99              | 188670                   |
|                               | 160 foot boom & 230 foot mast | 160                | 68.54                    |
| 170                           |                               | 67.08              | 147700                   |
| 180                           |                               | 65.61              | 130820                   |
| 190                           |                               | 64.11              | 115810                   |
| 200                           |                               | 62.60              | 102390                   |
| 210 foot boom & 230 foot mast | 210                           | 61.06              | 94790                    |
|                               | 220                           | 59.51              | 83490                    |
|                               | 230                           | 57.92              | 73240                    |
|                               | 240                           | 56.31              | 63930                    |
|                               | 250                           | 54.66              | 55410                    |
| 260 foot boom & 230 foot mast | 260                           | 52.99              | 47610                    |
|                               | 270                           | 51.27              | 40440                    |
|                               | 280                           | 49.51              | 33830                    |
|                               | 290                           | 47.70              | 27720                    |
|                               | 300                           | 45.84              | 22060                    |
| 310 foot boom & 230 foot mast | 310                           | 43.91              | 16800                    |
|                               | 320                           | 41.92              | 11920                    |
|                               | 330                           | 39.84              | 7370                     |
|                               | 340                           | 37.67              | 3130                     |

11320.75

All ratings are in compliance with applicable United States codes in effect at time of publication.

**73 FT. COUNTERWEIGHT POSITION**



# SUPER SKY HORSE RATINGS

with 22.3 meter counterweight position

| Boom and Mast Length              | Radius In Meters | Boom Angle Degrees | Crane Lift Rating (Kg.) |
|-----------------------------------|------------------|--------------------|-------------------------|
| 38.1 meter boom & 39.6 meter mast | 8.2              | 79.72              | 8-1930                  |
|                                   | 9.1              | 78.32              | 7-9150                  |
|                                   | 10.7             | 75.95              | 6-20620                 |
|                                   | 12.2             | 73.56              | 5-4390                  |
|                                   | 15.2             | 68.68              | 4-25120                 |
| 18.3 meter boom & 39.6 meter mast | 18.3             | 63.61              | 3-4720                  |
|                                   | 21.3             | 58.29              | 2-9700                  |
|                                   | 24.4             | 52.63              | 2-49210                 |
|                                   | 27.4             | 46.48              | 2-1280                  |
|                                   | 30.5             | 39.58              | 1-90860                 |
| 33.5 meter boom & 39.6 meter mast | 33.5             | 31.41              | 1-71190                 |
|                                   | 36.6             | 20.34              | 1-5840                  |

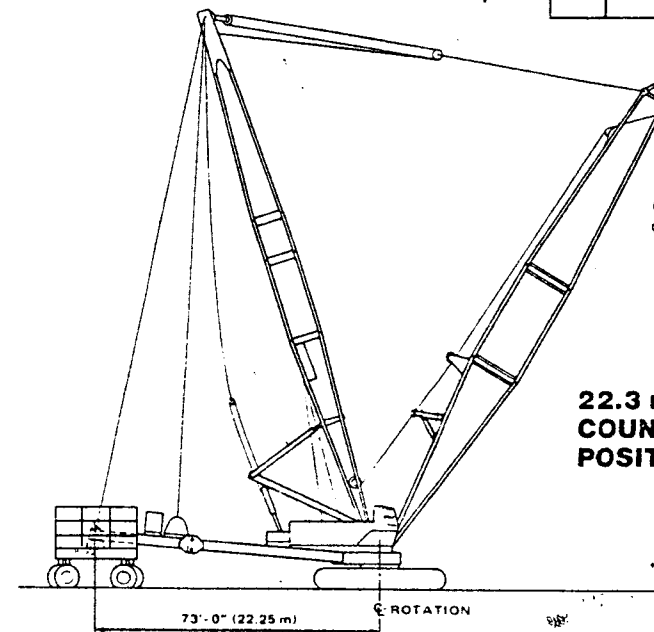
| Boom and Mast Length              | Radius In Meters | Boom Angle Degrees | Crane Lift Rating (Kg.) |
|-----------------------------------|------------------|--------------------|-------------------------|
| 76.2 meter boom & 39.6 meter mast | 14.9             | 79.79              | 4-29940                 |
|                                   | 15.2             | 79.56              | 4-19690                 |
|                                   | 18.3             | 77.21              | 3-39680                 |
|                                   | 21.3             | 74.85              | 2-82580                 |
|                                   | 24.4             | 72.45              | 2-40540                 |
| 30.5 meter boom & 39.6 meter mast | 27.4             | 70.02              | 2-08410                 |
|                                   | 30.5             | 67.55              | 1-81690                 |
|                                   | 33.5             | 65.03              | 1-61380                 |
|                                   | 36.6             | 62.46              | 1-43330                 |
|                                   | 39.6             | 59.83              | 1-29590                 |
| 42.7 meter boom & 39.6 meter mast | 42.7             | 57.12              | 1-16540                 |
|                                   | 45.7             | 54.32              | 1-05310                 |
|                                   | 48.8             | 51.42              | 95540                   |
|                                   | 51.8             | 48.39              | 88340                   |
|                                   | 54.9             | 45.21              | 80620                   |
| 57.9 meter boom & 39.6 meter mast | 57.9             | 41.84              | 73760                   |
|                                   | 61.0             | 38.23              | 67620                   |
|                                   | 64.0             | 34.29              | 62110                   |
|                                   | 67.1             | 29.89              | 57120                   |
|                                   | 70.1             | 24.77              | 52590                   |

| Boom and Mast Length               | Radius In Meters | Boom Angle Degrees | Crane Lift Rating (Kg.) |
|------------------------------------|------------------|--------------------|-------------------------|
| 106.7 meter boom & 54.9 meter mast | 20.1             | 79.91              | 2-71670                 |
|                                    | 21.3             | 79.25              | 2-68350                 |
|                                    | 24.4             | 77.57              | 2-26780                 |
|                                    | 27.4             | 75.89              | 1-95060                 |
|                                    | 30.5             | 74.19              | 1-70240                 |
| 33.5 meter boom & 54.9 meter mast  | 33.5             | 72.48              | 1-48510                 |
|                                    | 36.6             | 70.75              | 1-32370                 |
|                                    | 39.6             | 69.00              | 1-17130                 |
|                                    | 42.7             | 67.23              | 1-04160                 |
|                                    | 45.7             | 65.43              | 93010                   |
| 48.8 meter boom & 54.9 meter mast  | 48.8             | 63.61              | 85030                   |
|                                    | 51.8             | 61.76              | 76370                   |
|                                    | 54.9             | 59.88              | 68720                   |
|                                    | 57.9             | 57.95              | 61910                   |
|                                    | 61.0             | 55.99              | 55820                   |
| 64.0 meter boom & 54.9 meter mast  | 64.0             | 53.98              | 50350                   |
|                                    | 67.1             | 51.92              | 45400                   |
|                                    | 70.1             | 49.79              | 42540                   |
|                                    | 73.2             | 47.59              | 38280                   |
|                                    | 76.2             | 45.32              | 34400                   |
| 79.2 meter boom & 54.9 meter mast  | 79.2             | 42.94              | 30830                   |
|                                    | 82.3             | 40.46              | 27550                   |
|                                    | 85.3             | 37.84              | 24530                   |
|                                    | 88.4             | 35.05              | 21730                   |
|                                    | 91.4             | 32.05              | 19140                   |
| 94.5 meter boom & 54.9 meter mast  | 94.5             | 28.77              | 16740                   |
|                                    | 97.5             | 25.09              | 14510                   |
|                                    | 100.6            | 20.80              | 12440                   |

| Boom and Mast Length               | Radius In Meters | Boom Angle Degrees | Crane Lift Rating (Kg.) | MET |
|------------------------------------|------------------|--------------------|-------------------------|-----|
| 129.5 meter boom & 54.9 meter mast | 24.1             | 79.93              | 1-7                     |     |
|                                    | 24.4             | 79.80              | 1-7                     |     |
|                                    | 27.4             | 78.42              | 1-7                     |     |
|                                    | 30.5             | 77.04              | 1-7                     |     |
|                                    | 33.5             | 75.65              | 1-13                    |     |
| 36.6 meter boom & 54.9 meter mast  | 36.6             | 74.25              | 1-12                    |     |
|                                    | 39.6             | 72.84              | 1-10                    |     |
|                                    | 42.7             | 71.42              | 1-9                     |     |
|                                    | 45.7             | 69.99              | 1-8                     |     |
|                                    | 48.8             | 68.54              | 1-7                     |     |
| 51.8 meter boom & 54.9 meter mast  | 51.8             | 67.08              | 1-6                     |     |
|                                    | 54.9             | 65.61              | 1-5                     |     |
|                                    | 57.9             | 64.11              | 1-5                     |     |
|                                    | 61.0             | 62.60              | 1-4                     |     |
|                                    | 64.0             | 61.06              | 1-4                     |     |
| 67.1 meter boom & 54.9 meter mast  | 67.1             | 59.51              | 1-3                     |     |
|                                    | 70.1             | 57.92              | 1-3                     |     |
|                                    | 73.2             | 56.31              | 1-2                     |     |
|                                    | 76.2             | 54.66              | 1-2                     |     |
|                                    | 79.2             | 52.99              | 1-2                     |     |
| 82.3 meter boom & 54.9 meter mast  | 82.3             | 51.27              | 1-1                     |     |
|                                    | 85.3             | 49.51              | 1-1                     |     |
|                                    | 88.4             | 47.70              | 1-1                     |     |
|                                    | 91.4             | 45.84              | 1-1                     |     |
|                                    | 94.5             | 43.91              | 1-1                     |     |
| 97.5 meter boom & 54.9 meter mast  | 97.5             | 41.92              | 1-1                     |     |
|                                    | 100.6            | 39.84              | 1-1                     |     |
|                                    | 103.6            | 37.67              | 1-1                     |     |

All ratings are in compliance with applicable United States codes in effect at time of publication.

**22.3 m COUNTERWEIGHT POSITION**



100

# SUPER SKY HORSE RATINGS

with 111 foot counterweight position

| Boom and Mast Length          | Radius In Feet | Boom Angle Degrees | Crane Lift Rating Length |
|-------------------------------|----------------|--------------------|--------------------------|
| 125 foot boom & 180 foot mast | 27             | 79.72              | 2000000                  |
|                               | 30             | 78.32              | 2000000                  |
|                               | 35             | 75.05              | 2000000                  |
|                               | 40             | 73.58              | 1899050                  |
|                               | 50             | 68.64              | 1490010                  |
| 150 foot boom & 180 foot mast | 30             | 80.73              | 1891710                  |
|                               | 35             | 78.81              | 1831870                  |
|                               | 40             | 75.98              | 1772030                  |
|                               | 50             | 71.24              | 1512190                  |
|                               | 60             | 66.50              | 1252350                  |

| Boom and Mast Length          | Radius In Feet | Boom Angle Degrees | Crane Lift Rating Length |
|-------------------------------|----------------|--------------------|--------------------------|
| 150 foot boom & 180 foot mast | 40             | 70.70              | 1104510                  |
|                               | 50             | 70.28              | 1104510                  |
|                               | 60             | 77.71              | 1173880                  |
|                               | 70             | 74.88              | 1032780                  |
|                               | 80             | 77.48              | 878700                   |
| 180 foot boom & 180 foot mast | 50             | 70.00              | 787740                   |
|                               | 60             | 67.88              | 678290                   |
|                               | 70             | 77.00              | 806080                   |
|                               | 80             | 69.48              | 648100                   |
|                               | 90             | 66.83              | 484780                   |
| 210 foot boom & 180 foot mast | 60             | 67.12              | 437440                   |
|                               | 70             | 64.32              | 414100                   |
|                               | 80             | 51.42              | 383210                   |
|                               | 90             | 48.30              | 333770                   |
|                               | 100            | 45.21              | 327720                   |
| 240 foot boom & 180 foot mast | 100            | 41.84              | 304520                   |
|                               | 110            | 38.23              | 285770                   |
|                               | 120            | 34.29              | 266840                   |
|                               | 130            | 29.89              | 249680                   |
|                               | 140            | 24.77              | 234070                   |

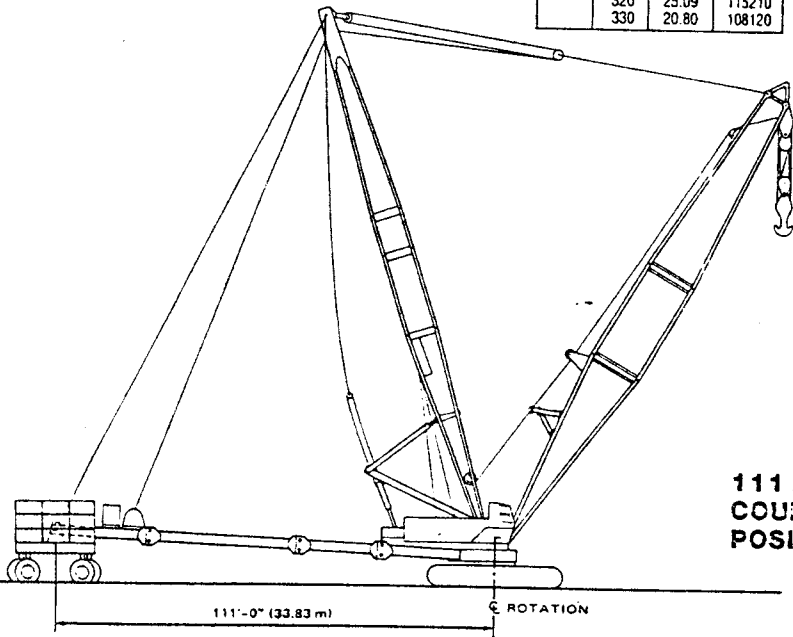
| Boom and Mast Length          | Radius In Feet | Boom Angle Degrees | Crane Lift Rating Length |
|-------------------------------|----------------|--------------------|--------------------------|
| 300 foot boom & 180 foot mast | 60             | 70.31              | 899810                   |
|                               | 70             | 70.28              | 890510                   |
|                               | 80             | 77.57              | 899310                   |
|                               | 90             | 76.89              | 899500                   |
|                               | 100            | 74.10              | 899510                   |
| 330 foot boom & 180 foot mast | 110            | 72.48              | 874090                   |
|                               | 120            | 76.78              | 813170                   |
|                               | 130            | 69.60              | 485050                   |
|                               | 140            | 67.23              | 421170                   |
|                               | 150            | 65.43              | 386510                   |
| 360 foot boom & 180 foot mast | 160            | 63.61              | 353370                   |
|                               | 170            | 61.76              | 324270                   |
|                               | 180            | 59.88              | 298520                   |
|                               | 190            | 57.95              | 278550                   |
|                               | 200            | 55.99              | 257800                   |
| 390 foot boom & 180 foot mast | 210            | 53.98              | 239120                   |
|                               | 220            | 51.92              | 222210                   |
|                               | 230            | 49.79              | 206830                   |
|                               | 240            | 47.59              | 195640                   |
|                               | 250            | 45.32              | 182570                   |
| 420 foot boom & 180 foot mast | 260            | 42.94              | 170570                   |
|                               | 270            | 40.46              | 159510                   |
|                               | 280            | 37.84              | 149270                   |
|                               | 290            | 35.05              | 139800                   |
|                               | 300            | 32.05              | 131000                   |
| 450 foot boom & 180 foot mast | 310            | 28.77              | 122820                   |
|                               | 320            | 25.09              | 115210                   |
|                               | 330            | 20.80              | 108120                   |

| Boom and Mast Length          | Radius In Feet | Boom Angle Degrees | Crane Lift Rating Length |
|-------------------------------|----------------|--------------------|--------------------------|
| 500 foot boom & 180 foot mast | 92             | 79.95              | 241690                   |
|                               | 100            | 79.01              | 241690                   |
|                               | 110            | 77.84              | 241140                   |
|                               | 120            | 76.66              | 240650                   |
|                               | 130            | 75.48              | 240010                   |
| 530 foot boom & 180 foot mast | 140            | 74.29              | 239320                   |
|                               | 150            | 73.10              | 238580                   |
|                               | 160            | 71.89              | 237760                   |
|                               | 170            | 70.68              | 236890                   |
|                               | 180            | 69.46              | 235960                   |
| 560 foot boom & 180 foot mast | 190            | 68.23              | 234970                   |
|                               | 200            | 66.98              | 217280                   |
|                               | 210            | 65.73              | 198480                   |
|                               | 220            | 64.46              | 185530                   |
|                               | 230            | 63.18              | 169860                   |
| 590 foot boom & 180 foot mast | 240            | 61.89              | 155570                   |
|                               | 250            | 60.58              | 142500                   |
|                               | 260            | 59.25              | 130490                   |
|                               | 270            | 57.90              | 119420                   |
|                               | 280            | 56.53              | 109180                   |
| 620 foot boom & 180 foot mast | 290            | 55.14              | 99710                    |
|                               | 300            | 53.72              | 94850                    |
|                               | 310            | 52.28              | 86420                    |
|                               | 320            | 50.81              | 78570                    |
|                               | 330            | 49.31              | 71240                    |
| 650 foot boom & 180 foot mast | 340            | 47.77              | 64370                    |
|                               | 350            | 46.20              | 57940                    |
|                               | 360            | 44.58              | 51910                    |
|                               | 370            | 42.91              | 46240                    |
|                               | 380            | 41.19              | 40910                    |
| 680 foot boom & 180 foot mast | 390            | 39.40              | 35880                    |
|                               | 400            | 37.55              | 31150                    |
|                               | 410            | 35.61              | 26890                    |
|                               | 420            | 33.57              | 22480                    |
|                               | 430            | 31.42              | 18510                    |
| 710 foot boom & 180 foot mast | 440            | 29.12              | 14780                    |
|                               | 450            | 26.64              | 11260                    |
|                               | 460            | 23.93              | 7960                     |
|                               | 470            | 20.87              | 4880                     |

11320 77

All ratings are in compliance with applicable United States codes in effect at time of publication.

**111 FT. COUNTERWEIGHT POSITION**



# SUPER SKY HORSE RATINGS

with 33.8 meter counterweight position

| Boom and Mast Length               | Radius In Meters | Boom Angle Degrees | Crane Lift Rating (Kg.) |
|------------------------------------|------------------|--------------------|-------------------------|
| 38.1 meter boom & 39.6 meter mast  | 8.2              | 79.72              | 907200                  |
|                                    | 9.1              | 78.32              | 907200                  |
|                                    | 10.7             | 75.95              | 907200                  |
|                                    | 12.2             | 73.56              | 861410                  |
|                                    | 15.2             | 68.68              | 675870                  |
| 76.2 meter boom & 39.6 meter mast  | 18.3             | 63.61              | 554170                  |
|                                    | 21.3             | 58.29              | 467920                  |
|                                    | 24.4             | 52.63              | 404040                  |
|                                    | 27.4             | 46.48              | 354020                  |
|                                    | 30.5             | 39.58              | 314200                  |
| 106.7 meter boom & 39.6 meter mast | 33.5             | 31.41              | 280900                  |
|                                    | 36.6             | 20.34              | 253450                  |

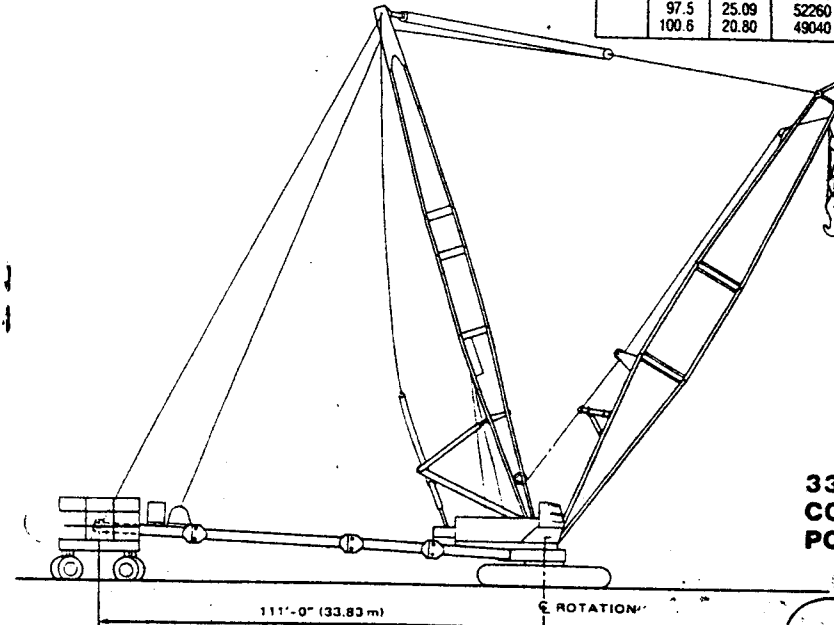
| Boom and Mast Length               | Radius In Meters | Boom Angle Degrees | Crane Lift Rating (Kg.) |
|------------------------------------|------------------|--------------------|-------------------------|
| 76.2 meter boom & 39.6 meter mast  | 14.9             | 79.79              | 542290                  |
|                                    | 15.2             | 79.56              | 542290                  |
|                                    | 18.3             | 77.21              | 532390                  |
|                                    | 21.3             | 74.85              | 463940                  |
|                                    | 24.4             | 72.45              | 399020                  |
| 106.7 meter boom & 39.6 meter mast | 27.4             | 70.02              | 348250                  |
|                                    | 30.5             | 67.55              | 308110                  |
|                                    | 33.5             | 65.03              | 274470                  |
|                                    | 36.6             | 62.46              | 247710                  |
|                                    | 39.6             | 59.83              | 224210                  |
| 152.4 meter boom & 39.6 meter mast | 42.7             | 57.12              | 205230                  |
|                                    | 45.7             | 54.32              | 187890                  |
|                                    | 48.8             | 51.42              | 173820                  |
|                                    | 51.8             | 48.39              | 163470                  |
|                                    | 54.9             | 45.21              | 148650                  |
| 203.0 meter boom & 39.6 meter mast | 57.9             | 41.84              | 138130                  |
|                                    | 61.0             | 38.23              | 129630                  |
|                                    | 64.0             | 34.29              | 121040                  |
|                                    | 67.1             | 29.89              | 113250                  |
|                                    | 70.1             | 24.77              | 106170                  |

| Boom and Mast Length               | Radius In Meters | Boom Angle Degrees | Crane Lift Rating (Kg.) |
|------------------------------------|------------------|--------------------|-------------------------|
| 106.7 meter boom & 54.9 meter mast | 20.1             | 79.91              | 271940                  |
|                                    | 21.3             | 79.25              | 271940                  |
|                                    | 24.4             | 77.57              | 271940                  |
|                                    | 27.4             | 75.89              | 271930                  |
|                                    | 30.5             | 74.19              | 271940                  |
| 152.4 meter boom & 54.9 meter mast | 33.5             | 72.48              | 260410                  |
|                                    | 36.6             | 70.75              | 232770                  |
|                                    | 39.6             | 68.00              | 210950                  |
|                                    | 42.7             | 67.23              | 191040                  |
|                                    | 45.7             | 65.43              | 175320                  |
| 203.0 meter boom & 54.9 meter mast | 48.8             | 63.61              | 160290                  |
|                                    | 51.8             | 61.76              | 147050                  |
|                                    | 54.9             | 59.88              | 135410                  |
|                                    | 57.9             | 57.95              | 126350                  |
|                                    | 61.0             | 55.99              | 116940                  |
| 253.7 meter boom & 54.9 meter mast | 64.0             | 53.98              | 108460                  |
|                                    | 67.1             | 51.92              | 100790                  |
|                                    | 70.1             | 49.79              | 93820                   |
|                                    | 73.2             | 47.59              | 88740                   |
|                                    | 76.2             | 45.32              | 82810                   |
| 304.4 meter boom & 54.9 meter mast | 79.2             | 42.94              | 77370                   |
|                                    | 82.3             | 40.46              | 72350                   |
|                                    | 85.3             | 37.84              | 67710                   |
|                                    | 88.4             | 35.05              | 63410                   |
|                                    | 91.4             | 32.05              | 59420                   |
| 355.1 meter boom & 54.9 meter mast | 94.5             | 28.77              | 55710                   |
|                                    | 97.5             | 25.09              | 52260                   |
|                                    | 100.6            | 20.80              | 49040                   |

| Boom and Mast Length               | Radius In Meters | Boom Angle Degrees | Crane Lift Rating (Kg.) |
|------------------------------------|------------------|--------------------|-------------------------|
| 152.4 meter boom & 54.9 meter mast | 28.0             | 79.95              | 109630                  |
|                                    | 30.5             | 79.01              | 109630                  |
|                                    | 33.5             | 77.84              | 109380                  |
|                                    | 36.6             | 76.66              | 109160                  |
|                                    | 39.6             | 75.48              | 108870                  |
| 203.0 meter boom & 54.9 meter mast | 42.7             | 74.29              | 108560                  |
|                                    | 45.7             | 73.10              | 108220                  |
|                                    | 48.8             | 71.89              | 107850                  |
|                                    | 51.8             | 70.68              | 107450                  |
|                                    | 54.9             | 69.46              | 107030                  |
| 253.7 meter boom & 54.9 meter mast | 57.9             | 68.23              | 106580                  |
|                                    | 61.0             | 66.98              | 98560                   |
|                                    | 64.0             | 65.73              | 90030                   |
|                                    | 67.1             | 64.46              | 84160                   |
|                                    | 70.1             | 63.18              | 77050                   |
| 304.4 meter boom & 54.9 meter mast | 73.2             | 61.89              | 70570                   |
|                                    | 76.2             | 60.58              | 64640                   |
|                                    | 79.2             | 59.25              | 59190                   |
|                                    | 82.3             | 57.90              | 54170                   |
|                                    | 85.3             | 56.53              | 49520                   |
| 355.1 meter boom & 54.9 meter mast | 88.4             | 55.14              | 45230                   |
|                                    | 91.4             | 53.72              | 43020                   |
|                                    | 94.5             | 52.28              | 39200                   |
|                                    | 97.5             | 50.81              | 35640                   |
|                                    | 100.6            | 49.31              | 32310                   |
| 405.8 meter boom & 54.9 meter mast | 103.6            | 47.77              | 29200                   |
|                                    | 106.7            | 46.20              | 26280                   |
|                                    | 109.7            | 44.58              | 23550                   |
|                                    | 112.8            | 42.91              | 20970                   |
|                                    | 115.8            | 41.19              | 18560                   |
| 456.5 meter boom & 54.9 meter mast | 118.9            | 39.40              | 16280                   |
|                                    | 121.9            | 37.55              | 14130                   |
|                                    | 125.0            | 35.61              | 12110                   |
|                                    | 128.0            | 33.57              | 10200                   |
|                                    | 131.1            | 31.42              | 8400                    |
| 507.2 meter boom & 54.9 meter mast | 134.1            | 29.12              | 6700                    |
|                                    | 137.2            | 26.64              | 5110                    |
|                                    | 140.2            | 23.93              | 3610                    |
|                                    | 143.3            | 20.87              | 2210                    |

All ratings are in compliance with applicable United States codes in effect at time of publication.

**33.8 m COUNTERWEIGHT POSITION**



19

# SUPER SKY HORSE RATINGS

with 130 foot counterweight position

| Boom and Mast Length          | Radius In Feet | Boom Angle Degrees | Crane Lift Rating Length |
|-------------------------------|----------------|--------------------|--------------------------|
| 175 foot boom & 130 foot mast | 27             | 79.72              | 2000000                  |
|                               | 30             | 78.12              | 2000000                  |
|                               | 35             | 75.04              | 2000000                  |
|                               | 40             | 72.04              | 2000000                  |
|                               | 50             | 66.04              | 1780070                  |
|                               | 60             | 61.01              | 1480260                  |
|                               | 70             | 56.79              | 1230430                  |
|                               | 80             | 52.83              | 1070780                  |
|                               | 90             | 48.48              | 910620                   |
|                               | 100            | 44.48              | 810510                   |
| 110                           | 31.41          | 709260             |                          |
| 120                           | 20.34          | 591950             |                          |

| Boom and Mast Length          | Radius In Feet | Boom Angle Degrees | Crane Lift Rating Length |
|-------------------------------|----------------|--------------------|--------------------------|
| 250 foot boom & 130 foot mast | 40             | 79.70              | 11091410                 |
|                               | 50             | 70.50              | 11091110                 |
|                               | 60             | 77.21              | 1173920                  |
|                               | 70             | 74.85              | 1142630                  |
|                               | 80             | 72.45              | 1021040                  |
|                               | 90             | 70.02              | 928440                   |
|                               | 100            | 67.55              | 824360                   |
|                               | 110            | 65.03              | 738700                   |
|                               | 120            | 62.46              | 668020                   |
|                               | 130            | 59.83              | 606440                   |
| 140                           | 57.12          | 556130             |                          |
| 150                           | 54.32          | 510720             |                          |
| 160                           | 51.42          | 473270             |                          |
| 170                           | 48.39          | 438360             |                          |
| 180                           | 45.21          | 407460             |                          |
| 190                           | 41.84          | 381870             |                          |
| 200                           | 38.23          | 357010             |                          |
| 210                           | 34.29          | 334610             |                          |
| 220                           | 29.89          | 314320             |                          |
| 230                           | 24.77          | 297420             |                          |

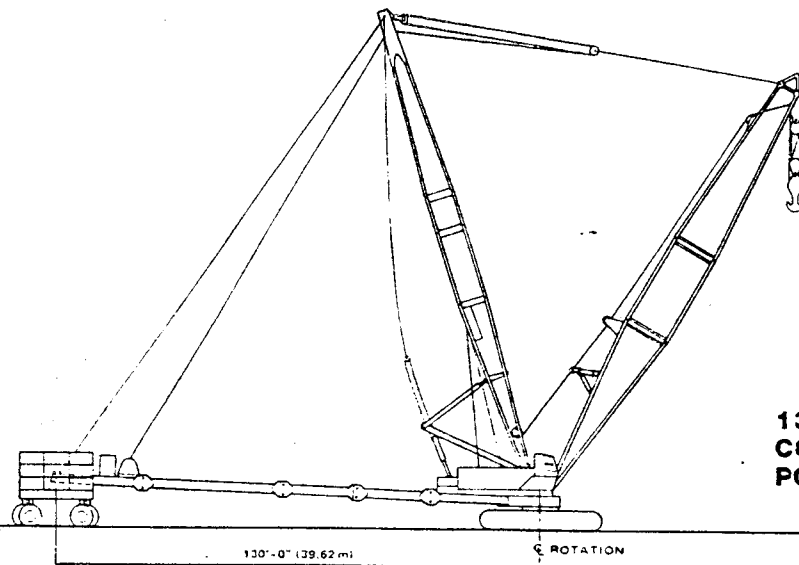
| Boom and Mast Length          | Radius In Feet | Boom Angle Degrees | Crane Lift Rating Length |
|-------------------------------|----------------|--------------------|--------------------------|
| 350 foot boom & 180 foot mast | 60             | 79.91              | 599780                   |
|                               | 70             | 79.25              | 599780                   |
|                               | 80             | 77.57              | 599780                   |
|                               | 90             | 75.89              | 599770                   |
|                               | 100            | 74.19              | 599780                   |
|                               | 110            | 72.48              | 598610                   |
|                               | 120            | 70.75              | 597240                   |
|                               | 130            | 69.00              | 574670                   |
|                               | 140            | 67.23              | 522690                   |
|                               | 150            | 65.43              | 480770                   |
| 160                           | 63.61          | 441540             |                          |
| 170                           | 61.76          | 407090             |                          |
| 180                           | 59.88          | 379400             |                          |
| 190                           | 57.95          | 352060             |                          |
| 200                           | 55.99          | 327560             |                          |
| 210                           | 53.98          | 305470             |                          |
| 220                           | 51.92          | 288150             |                          |
| 230                           | 49.79          | 269800             |                          |
| 240                           | 47.59          | 253030             |                          |
| 250                           | 45.32          | 237670             |                          |
| 260                           | 42.94          | 223540             |                          |
| 270                           | 40.46          | 210520             |                          |
| 280                           | 37.84          | 198470             |                          |
| 290                           | 35.05          | 189520             |                          |
| 300                           | 32.05          | 178970             |                          |
| 310                           | 28.77          | 169150             |                          |
| 320                           | 25.09          | 159990             |                          |
| 330                           | 20.80          | 151450             |                          |

| Boom and Mast Length          | Radius In Feet | Boom Angle Degrees | Crane Lift Rating Length |
|-------------------------------|----------------|--------------------|--------------------------|
| 500 foot boom & 180 foot mast | 92             | 79.95              | 241770                   |
|                               | 100            | 79.01              | 241770                   |
|                               | 110            | 77.84              | 241250                   |
|                               | 120            | 76.66              | 240780                   |
|                               | 130            | 75.48              | 240260                   |
|                               | 140            | 74.29              | 239530                   |
|                               | 150            | 73.10              | 238810                   |
|                               | 160            | 71.89              | 238010                   |
|                               | 170            | 70.68              | 237170                   |
|                               | 180            | 69.46              | 236270                   |
| 190                           | 68.23          | 235310             |                          |
| 200                           | 66.98          | 234320             |                          |
| 210                           | 65.73          | 233280             |                          |
| 220                           | 64.46          | 232180             |                          |
| 230                           | 63.18          | 231100             |                          |
| 240                           | 61.89          | 229710             |                          |
| 250                           | 60.58          | 197280             |                          |
| 260                           | 59.25          | 188810             |                          |
| 270                           | 57.90          | 173570             |                          |
| 280                           | 56.53          | 161320             |                          |
| 290                           | 55.14          | 149980             |                          |
| 300                           | 53.72          | 139440             |                          |
| 310                           | 52.28          | 129620             |                          |
| 320                           | 50.81          | 120470             |                          |
| 330                           | 49.31          | 111910             |                          |
| 340                           | 47.77          | 103890             |                          |
| 350                           | 46.20          | 96370              |                          |
| 360                           | 44.58          | 92620              |                          |
| 370                           | 42.91          | 85780              |                          |
| 380                           | 41.19          | 79360              |                          |
| 390                           | 39.40          | 73280              |                          |
| 400                           | 37.55          | 67570              |                          |
| 410                           | 35.61          | 62170              |                          |
| 420                           | 33.57          | 57060              |                          |
| 430                           | 31.42          | 52230              |                          |
| 440                           | 29.12          | 47680              |                          |
| 450                           | 26.64          | 43010              |                          |
| 460                           | 23.93          | 35990              |                          |

11320.78

All ratings are in compliance with applicable United States codes in effect at time of publication.

130 FT. COUNTERWEIGHT POSITION



# SUPER SKY HORSE RATINGS

with 39.6 meter counterweight position

| Boom and Mast Length              | Radius In Meters | Boom Angle Degrees | Crane Lift Rating (Kg.) |
|-----------------------------------|------------------|--------------------|-------------------------|
| 38.1 meter boom & 39.6 meter mast | 8.2              | 75.72              | 907200                  |
|                                   | 9.1              | 73.32              | 907200                  |
|                                   | 10.7             | 75.95              | 907200                  |
|                                   | 12.2             | 73.56              | 907200                  |
|                                   | 15.2             | 68.68              | 809710                  |
|                                   | 18.3             | 63.61              | 664680                  |
|                                   | 21.3             | 58.29              | 561930                  |
|                                   | 24.4             | 52.63              | 485710                  |
|                                   | 27.4             | 46.48              | 426210                  |
|                                   | 30.5             | 39.58              | 376730                  |
| 33.5                              | 31.4             | 321720             |                         |
| 36.6                              | 20.34            | 268510             |                         |

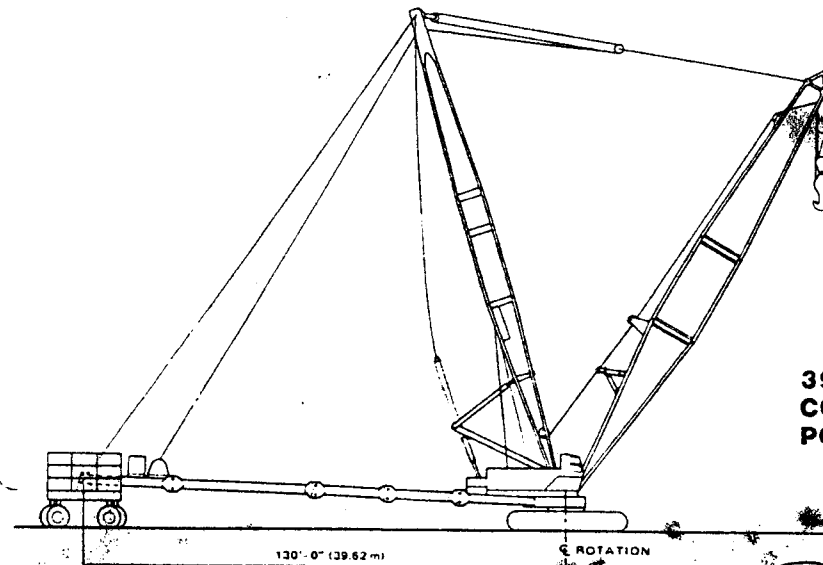
| Boom and Mast Length              | Radius In Meters | Boom Angle Degrees | Crane Lift Rating (Kg.) |
|-----------------------------------|------------------|--------------------|-------------------------|
| 78.2 meter boom & 39.6 meter mast | 14.9             | 79.79              | 542240                  |
|                                   | 15.2             | 79.56              | 542240                  |
|                                   | 18.3             | 77.21              | 532490                  |
|                                   | 21.3             | 74.85              | 518300                  |
|                                   | 24.4             | 72.45              | 464500                  |
|                                   | 27.4             | 70.02              | 421140                  |
|                                   | 30.5             | 67.55              | 373930                  |
|                                   | 33.5             | 65.03              | 335070                  |
|                                   | 36.6             | 62.46              | 303010                  |
|                                   | 39.6             | 59.83              | 275080                  |
| 42.7                              | 57.12            | 252260             |                         |
| 45.7                              | 54.32            | 231660             |                         |
| 48.8                              | 51.42            | 214680             |                         |
| 51.8                              | 48.39            | 198840             |                         |
| 54.9                              | 45.21            | 184820             |                         |
| 57.9                              | 41.84            | 173220             |                         |
| 61.0                              | 38.23            | 161940             |                         |
| 64.0                              | 34.29            | 151780             |                         |
| 67.1                              | 29.89            | 142580             |                         |
| 70.1                              | 24.77            | 134910             |                         |

| Boom and Mast Length               | Radius In Meters | Boom Angle Degrees | Crane Lift Rating (Kg.) |
|------------------------------------|------------------|--------------------|-------------------------|
| 106.7 meter boom & 54.9 meter mast | 20.1             | 79.91              | 272060                  |
|                                    | 21.3             | 79.25              | 272060                  |
|                                    | 24.4             | 77.57              | 272060                  |
|                                    | 27.4             | 75.89              | 272060                  |
|                                    | 30.5             | 74.19              | 272060                  |
|                                    | 33.5             | 72.48              | 271530                  |
|                                    | 36.6             | 70.75              | 270910                  |
|                                    | 39.6             | 69.00              | 260670                  |
|                                    | 42.7             | 67.23              | 237090                  |
|                                    | 45.7             | 65.43              | 218080                  |
| 48.8                               | 63.61            | 200280             |                         |
| 51.8                               | 61.76            | 184660             |                         |
| 54.9                               | 59.88            | 172100             |                         |
| 57.9                               | 57.95            | 159690             |                         |
| 61.0                               | 55.99            | 148580             |                         |
| 64.0                               | 53.98            | 138560             |                         |
| 67.1                               | 51.92            | 130700             |                         |
| 70.1                               | 49.79            | 122380             |                         |
| 73.2                               | 47.59            | 114770             |                         |
| 76.2                               | 45.32            | 107810             |                         |
| 79.2                               | 42.94            | 101400             |                         |
| 82.3                               | 40.46            | 95490              |                         |
| 85.3                               | 37.84            | 90030              |                         |
| 88.4                               | 35.05            | 85970              |                         |
| 91.4                               | 32.05            | 81180              |                         |
| 94.5                               | 28.77            | 76730              |                         |
| 97.5                               | 25.09            | 72570              |                         |
| 100.6                              | 20.80            | 68700              |                         |

| Boom and Mast Length               | Radius In Meters | Boom Angle Degrees | Crane Lift Rating (Kg.) |
|------------------------------------|------------------|--------------------|-------------------------|
| 152.4 meter boom & 54.9 meter mast | 28.0             | 79.95              | 1                       |
|                                    | 30.5             | 79.01              | 1                       |
|                                    | 33.5             | 77.84              | 1                       |
|                                    | 36.6             | 76.66              | 1                       |
|                                    | 39.6             | 75.48              | 1                       |
|                                    | 42.7             | 74.29              | 1                       |
|                                    | 45.7             | 73.10              | 1                       |
|                                    | 48.8             | 71.89              | 1                       |
|                                    | 51.8             | 70.68              | 1                       |
|                                    | 54.9             | 69.46              | 1                       |
| 57.9                               | 68.23            | 1                  |                         |
| 61.0                               | 66.98            | 1                  |                         |
| 64.0                               | 65.73            | 1                  |                         |
| 67.1                               | 64.46            | 1                  |                         |
| 70.1                               | 63.18            | 1                  |                         |
| 73.2                               | 61.89            | 1                  |                         |
| 76.2                               | 60.58            | 1                  |                         |
| 79.2                               | 59.25            | 1                  |                         |
| 82.3                               | 57.90            | 1                  |                         |
| 85.3                               | 56.53            | 1                  |                         |
| 88.4                               | 55.14            | 1                  |                         |
| 91.4                               | 53.72            | 1                  |                         |
| 94.5                               | 52.28            | 1                  |                         |
| 97.5                               | 50.81            | 1                  |                         |
| 100.6                              | 49.31            | 1                  |                         |
| 103.6                              | 47.77            | 1                  |                         |
| 106.7                              | 46.20            | 1                  |                         |
| 109.7                              | 44.58            | 1                  |                         |
| 112.8                              | 42.91            | 1                  |                         |
| 115.8                              | 41.19            | 1                  |                         |
| 118.9                              | 39.40            | 1                  |                         |
| 121.9                              | 37.55            | 1                  |                         |
| 125.0                              | 35.61            | 1                  |                         |
| 128.0                              | 33.57            | 1                  |                         |
| 131.1                              | 31.42            | 1                  |                         |
| 134.1                              | 29.12            | 1                  |                         |
| 137.2                              | 26.64            | 1                  |                         |
| 140.2                              | 23.93            | 1                  |                         |

All ratings are in compliance with applicable United States codes in effect at time of publication.

39.6 m COUNTERWEIGHT POSITION



20

# SUPER SKY HORSE RATINGS

130H Boom — 94H Mast — 94H Jib

150 ft. (45.7m) Boom — 70 ft. (21.3m) Jib

| Radius | Boom Angle | 10° Jib Offset |       | Boom Angle | 25° Offset |       | Boom Angle | 40° Offset |       |
|--------|------------|----------------|-------|------------|------------|-------|------------|------------|-------|
|        |            | Lbs.           | Kg.   |            | Lbs.       | Kg.   |            | Lbs.       | Kg.   |
| 100    | 77.8°      | 204830         | 92011 | 77.8°      | 181860     | 82492 | 72.9°      | 105080     | 47654 |
| 110    | 76.0°      | 204830         | 92011 | 76.0°      | 158530     | 71909 | 71.7°      | 84520      | 38338 |
| 120    | 71.1°      | 204820         | 92906 | 71.1°      | 142970     | 64851 | 65.9°      | 97710      | 44321 |
| 130    | 65.1°      | 204820         | 92906 | 65.1°      | 129220     | 58614 | 58.3°      | 91960      | 41713 |

175 ft. (53.3m) Jib

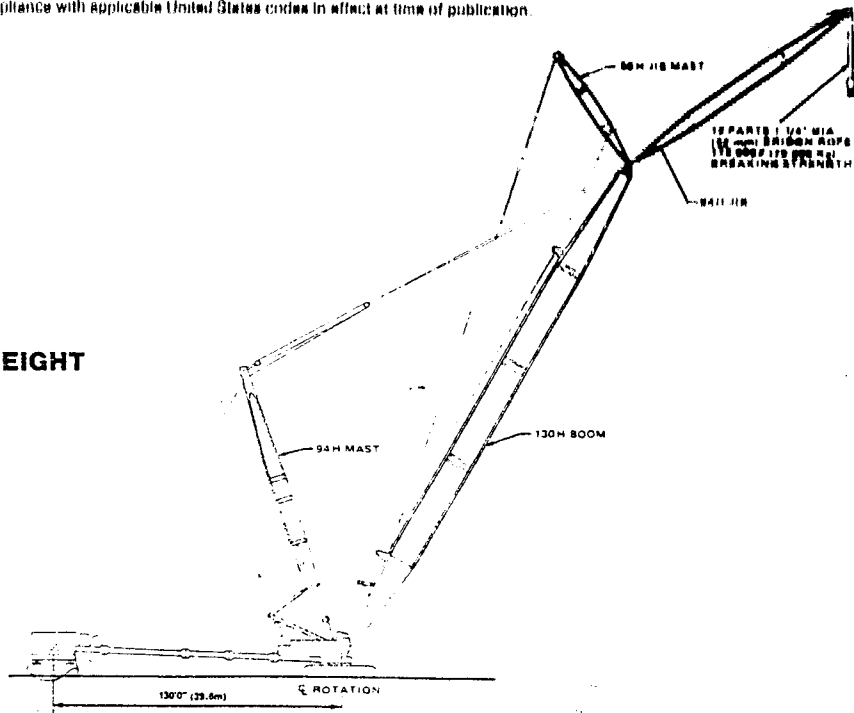
| Radius | Boom Angle | 10° Jib Offset |       | Boom Angle | 25° Offset |       | Boom Angle | 40° Offset |       |
|--------|------------|----------------|-------|------------|------------|-------|------------|------------|-------|
|        |            | Lbs.           | Kg.   |            | Lbs.       | Kg.   |            | Lbs.       | Kg.   |
| 100    | 77.8°      | 204830         | 92011 | 77.8°      | 181860     | 82492 | 72.9°      | 105080     | 47654 |
| 110    | 76.0°      | 204830         | 92011 | 76.0°      | 158530     | 71909 | 71.7°      | 84520      | 38338 |
| 120    | 71.1°      | 204820         | 92906 | 71.1°      | 142970     | 64851 | 65.9°      | 97710      | 44321 |
| 130    | 65.1°      | 204820         | 92906 | 65.1°      | 129220     | 58614 | 58.3°      | 91960      | 41713 |

400 ft. (121.9m) Boom — 200 ft. (60.9m) Jib

| Radius | Boom Angle | 10° Jib Offset |       | Boom Angle | 25° Offset |       | Boom Angle | 40° Offset |       |
|--------|------------|----------------|-------|------------|------------|-------|------------|------------|-------|
|        |            | Lbs.           | Kg.   |            | Lbs.       | Kg.   |            | Lbs.       | Kg.   |
| 143    | 79.9°      | 142770         | 64760 | 78.8°      | 127580     | 57870 | 77.4°      | 90340      | 40978 |
| 200    | 74.3°      | 142690         | 64724 | 73.6°      | 127580     | 57870 | 71.7°      | 84520      | 38338 |
| 250    | 69.1°      | 142690         | 64724 | 68.1°      | 127570     | 57868 | 65.9°      | 78160      | 35453 |
| 300    | 63.8°      | 141330         | 64103 | 62.3°      | 115290     | 52295 | 58.0°      | 73290      | 33244 |
| 350    | 58.2°      | 121420         | 55076 |            |            |       |            |            |       |
| 400    | 52.1°      | 88920          | 40334 |            |            |       |            |            |       |

All ratings are in compliance with applicable United States codes in effect at time of publication.

## 130 FT. COUNTERWEIGHT POSITION



## CRANE RATING DATA

Load ratings are in full compliance with applicable U.S. regulations in effect at time of publication. Ratings are in pounds (kilograms) and do not exceed 75% of the load which would cause tipping (i.e. trailing counterweight lifting off ground) with the crane standing level on firm uniformly supporting surface. Radius in feet (meters) is the horizontal distance at ground level from the center pin to a vertical line through the center of gravity of the suspended load. Blocks, slings, chokers and other load carrying devices are considered part of the load. All ratings allow full 360 degree swing with load. Safe load handling depends on ground conditions, boom lengths, radius of operation, wind conditions and proper operating techniques, all of which must be taken into consideration by the user.

## PERFORMANCE SPECIFICATIONS.

### LINE SPEEDS AND PULLS.

#### SINGLE LINE SPEED:

Main Hoist (Front Drum):  
 Nominal Rating ..... 155 FPM 47.244 MPM  
 High Speed Rating ..... 275 FPM 83.82 MPM

Auxiliary Hoist (Rear Drum):  
 Nominal Rating ..... 155 FPM 47.244 MPM  
 High Speed Rating ..... 275 FPM 83.82 MPM  
 Winch Drum (8th layer) .. 100 FPM 30.48 MPM

#### SINGLE LINE PULL:

Main Hoist (Front Drum):  
 Nominal Rating ..... SLP 60,000 lbs. 27220 Kg  
 High Speed Rating .... SLP 30,700 lbs. 13930 Kg

Auxiliary Hoist (Rear Drum):  
 Nominal Rating ..... SLP 60,000 lbs. 27220 Kg  
 High Speed Rating .... SLP 30,700 lbs. 13930 Kg  
 Winch Drum ..... SLP 78,000 lbs. 35380 Kg

### TRAVEL:

Walking on job site without load on level surface  
 Maximum speed is .71 MPH (1.142 KmPH) high range.  
 Maximum speed is .38 MPH (.611 KmPH) intermediate range.  
 Maximum speed is .15 MPH (.241 KmPH) low range.

Walking on job site without load on grades up to 5%  
 Maximum speed is .66 MPH (1.06194 KmPH).  
 Walking on job site on grades in excess of 5% is allowed only with concrete slabs removed from trailing counterweight. Maximum grade allowed is 10%.

Walking with load:

The Super Sky Horse is capable of traveling with rated loads "straight forward and reverse" in low range. Crane cannot turn with load when traveling with maximum rated capacities. Load must be suspended directly over the front of the machine and the surface must meet the level and stability requirements of "work site preparation".

Simultaneous swing and travel is not possible. Travel with load in positions other than over the end of the crawlers is not allowed.

21

## WORK SITE PREPARATIONS.

### CRAWLER WORKING AREA.

All areas of operation under the crawler tracks must provide a firm uniformly supporting surface. This can be accomplished simply through the use of hardwood crane mats. Such mats should extend a minimum of 2 ft. (6m) beyond the crawler tracks in all directions at all times to provide proper load distribution. For poor soil conditions, a concrete slab may be necessary. The operating surface for the crawler must be level within one inch (25mm) and have sufficient stability to remain within this tolerance when subjected to a maximum total load of 3,310,000 lbs. (1,502 metric tons) acting at a point 11 ft. (3.4 m) behind the machine centerline of rotation. This loading is equivalent to a maximum bearing pressure of 138 psi. (9.5 Kg/cm<sup>2</sup>) directly under the 60 in. (1,524mm) crawler shoes when handling 2,000,000 lbs.

### TRAILING COUNTERWEIGHT WORKING AREA.

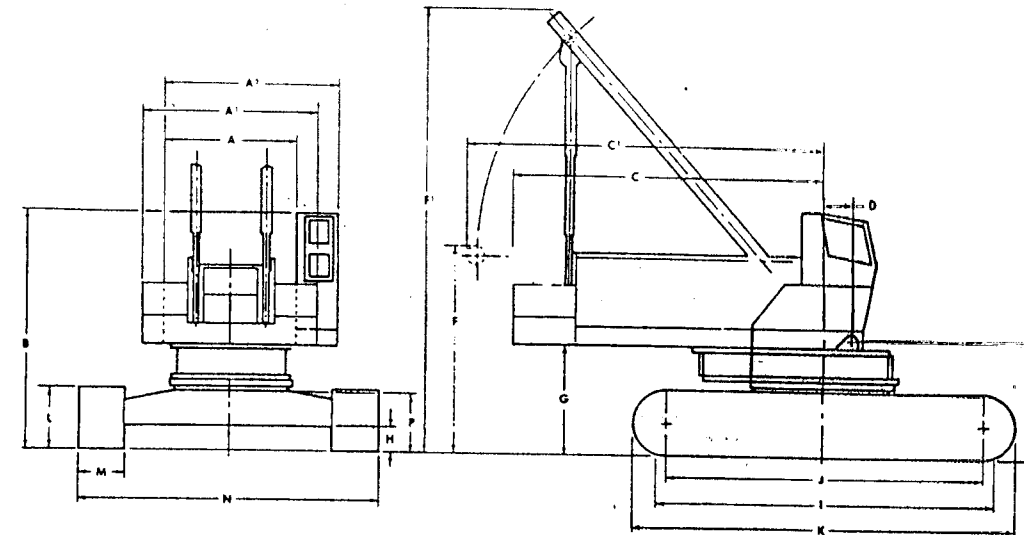
All areas of operation of the trailing counterweight module must be level within ±6 in. (152mm) of the crawler operating surface. The soil must be capable of maintaining this degree of levelness when subjected to a total load of 920,000 lbs. (418 metric tons). This is equivalent to a bearing pressure under the tires of 100 psi. (Air pressure in the tires) (7.0 Kg/cm<sup>2</sup>). If only swinging is foreseen during a lift with the trailing counterweight in the rearmost position, a 25 ft. (7.6m) wide path is required for the trailing counterweight. The extreme outside radius of this path is 143 ft. (43.6m).

### SUPER SKY HORSE ERECTION PROCEDURE.

- 1) Disconnect propel hoses and remove the hydraulic swivel from the upper deck. A second swivel is available as an option.
- 2) Remove the 11320 upper deck from the swing bearing.
- 3) Bolt the boom foot adaptor to the swing bearing on top of the crawler lowerworks and install the swivel in the adaptor.
- 4) Bolt the upper deck to the top of the boom foot adaptor. Secure the front of the deck with the eccentric link in the standard boom foot ears.
- 5) Attach propel hose extensions from the upper deck to the swivel.
- 6) With outside assistance, assemble 125,000 lb. (56.7 metric ton) counterweight on the rear of the crane and secure.
- 7) With outside assistance, pin the 94 in. (238.76 cm) mast into the upper boom foot on the upper deck. Set retractable A-frame in Sky Horse position. Reeve the mast suspension ropes and attach pendants.

- 8) Raise the mast about 8 ft. (2.4m) above the ground, attach, and reeve the boom suspension blocks.
- 9) Using outside assistance, assemble the trailing counterweight bed behind the crane. Connect the counterweight pendants to the tip and allow them to hang alongside the mast.
- 10) Attach the trailing counterweight connecting arms to the trailing counterweight bed. Block this section of arms up and add the desired number of arm extension sections blocking each up. Install lacings along with arm sections.
- 11) With outside assistance, attach the inner section of the trailing counterweight arms to the boom foot adaptor.
- 12) Connect the previously assembled trailing counterweight arms to the arms on the boom foot adaptor.
- 13) Using outside assistance, install and secure the trailing counterweight ballast on the bed. Also, install and secure the engine and winch package. Connect all hydraulic, electrical and control lines.
- 14) Connect the boom suspension pendants to the outer luff block equalizers. Reeve the boom suspension line back to the winch package.
- 15) Raise the mast high enough to clear the boom and install boom inner in boom foot adaptor. Using outside assistance, assemble the boom length required to the boom inner.
- 16) Connect the boom suspension pendants to the boom tip.
- 17) Raise the mast by taking up on the mast suspension lines and paying out on the boom suspension lines until the shock absorbing mast stops can be pinned into place. Trailing counterweight pendants must be held to the side to prevent damage to the machinery cab as the mast goes past vertical.
- 18) Connect the trailing counterweight pendants to the trailing counterweight. Pay out on mast suspension and take up on boom suspension to bring the mast forward until the pins for the mast stops can be inserted in the proper holes.
- 19) Pay out on the mast suspension line until the outer bail hangs considerably slack. This line must remain slack whenever loads are being handled.
- 20) Install the boom stop bumpers.
- 21) Raise the boom tip clear of the ground and attach and reeve the load tackle.

## 11CO SUPER SKY HORSE



### GENERAL DIMENSIONS

|   | Ft.        | M        |
|---|------------|----------|
| A. Width of cab   | 11'4"      | 3.454 M  |
| A'. Width over counterweight  | 15'0"      | 4.572 M  |
| A <sup>2</sup> . Width of cab over extended elevated operator's cab | 15'1"      | 4.597 M  |
| B. Height over cab  | 20'10 1/4" | 6.350 M  |
| C. Tailswing  | 27'8 3/4"  | 8.442 M  |
| C'. Tailswing with A-frame lowered                                  | 34'2 1/4"  | 10.416 M |
| D. Center of pivot to center of crane boom foot                     | 1'9"       | .533 M   |
| E. Ground to center of crane boom foot                              | 9'11"      | 3.019 M  |
| F. Height over A-frame in retracted position                        | 17'6 1/4"  | 5.340 M  |
| F'. Height over A-frame in raised position                          | 37'11 1/4" | 11.563 M |
| G. Ground to bottom of counterweight                                | 8'11 1/4"  | 2.724 M  |
| H. Ground clearance under carbody                                   | 1'11"      | .584 M   |
| I. Crawler bearing length   | 29'9"      | 9.067 M  |
| J. Center to center crawler tumblers                                | 28'0 1/2"  | 8.557 M  |
| K. Overall length of crawlers                                       | 33'0"      | 10.058 M |
| L. Height of crawler track  | 5'2"       | 1.574 M  |
| M. Width of tread shoes   | 60"        | 1.524 M  |
| N. Overall width over crawlers, 60" shoes                           | 26'9"      | 8.153 M  |
| P. Ground to bottom of turntable bearing                            | 4'11 1/2"  | 1.524 M  |

\*NOTE: Tailswing with Super Sky Horse Attachment varies according to length of stinger.  
Maximum tailswing with Super Sky Horse II is 141'7" (43.154 M).

NOTE: In accordance with varying material situations, and the company's policy of constant product improvement, the specifications are subject to change without notice and without incurring responsibility to units previously sold.