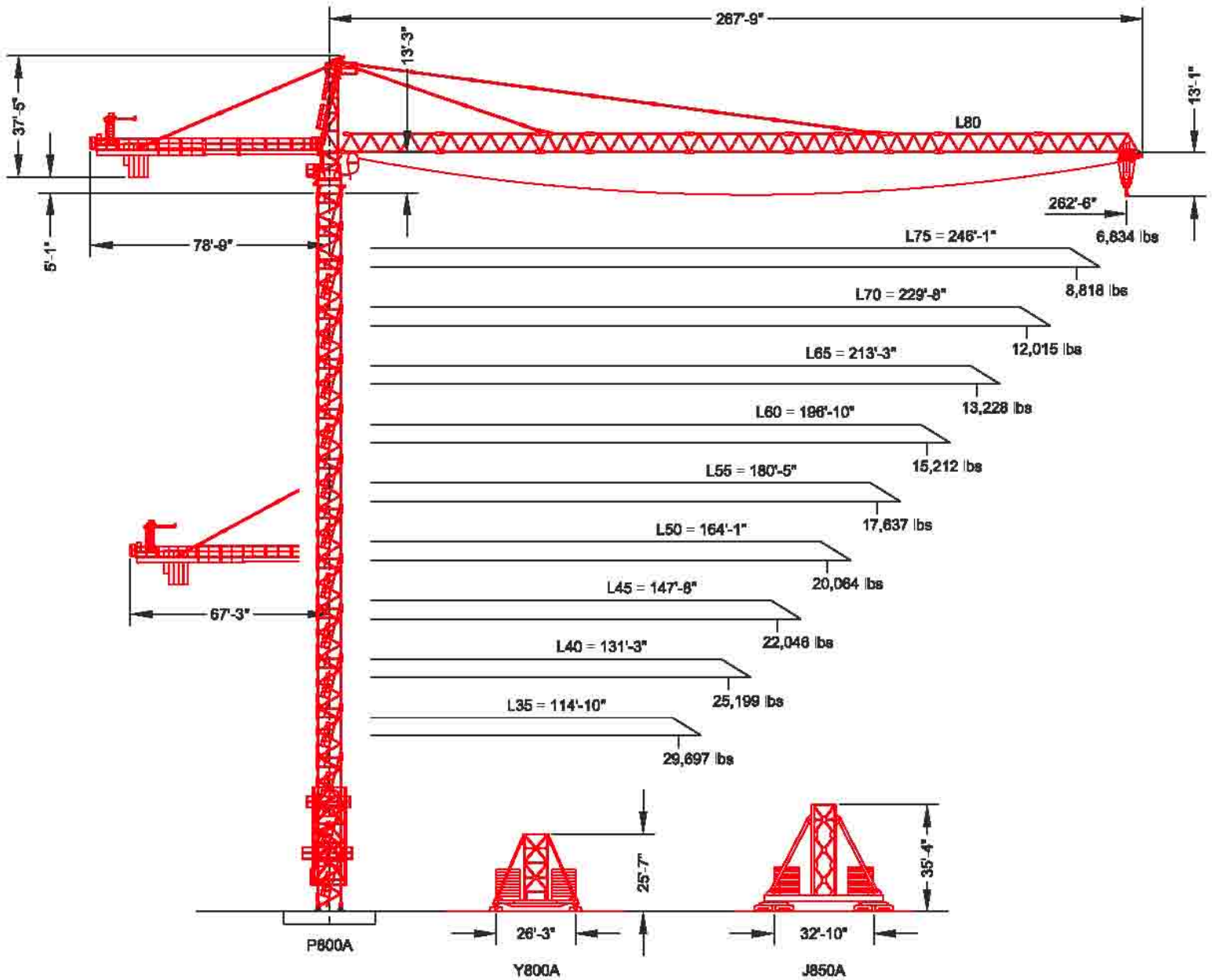


# MD 485B-M20

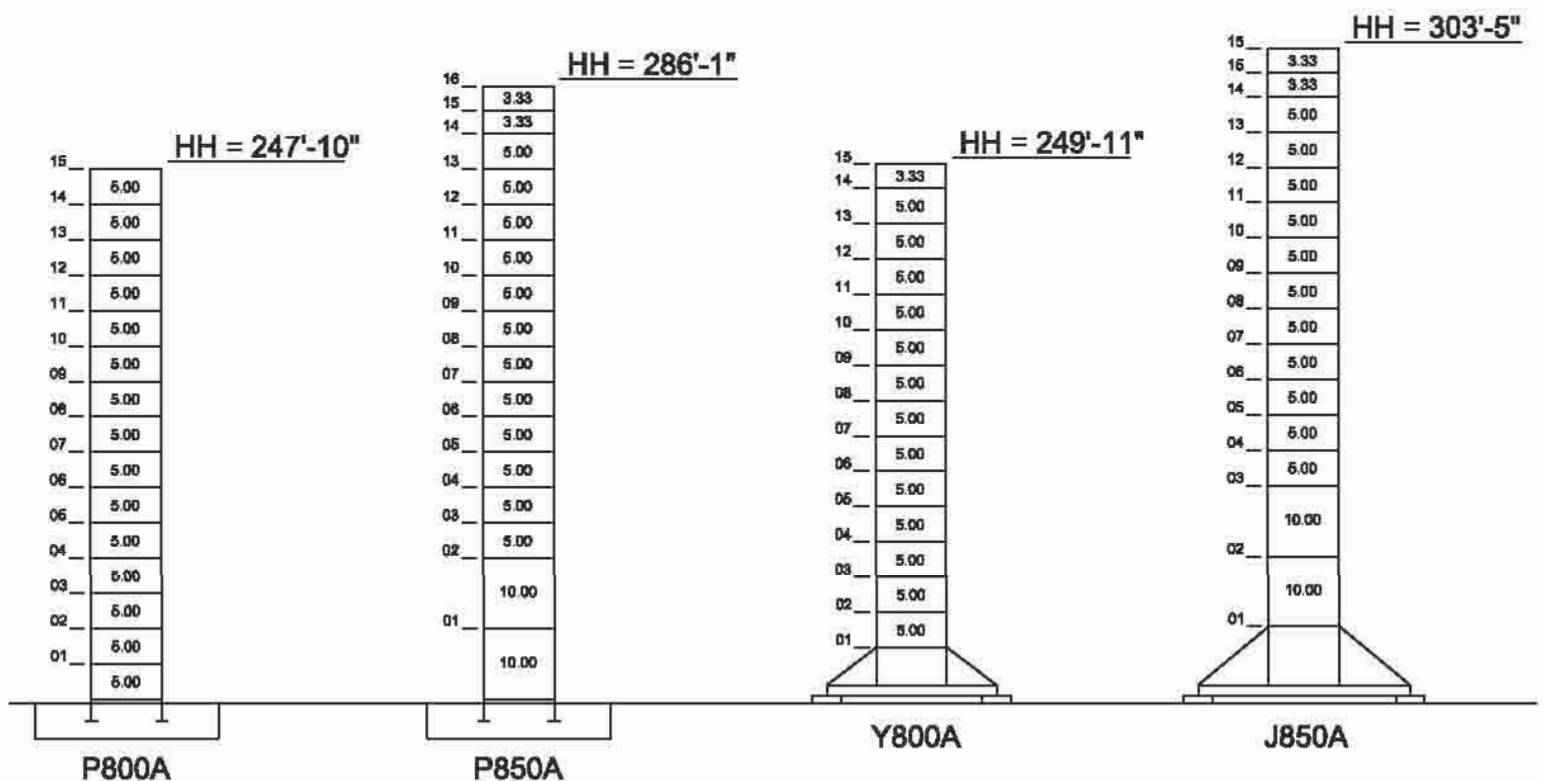
Maximum Capacity = 44,092 lbs



Note: Tip capacities are dependent on certain trolley types.

F.E.M. 1.001

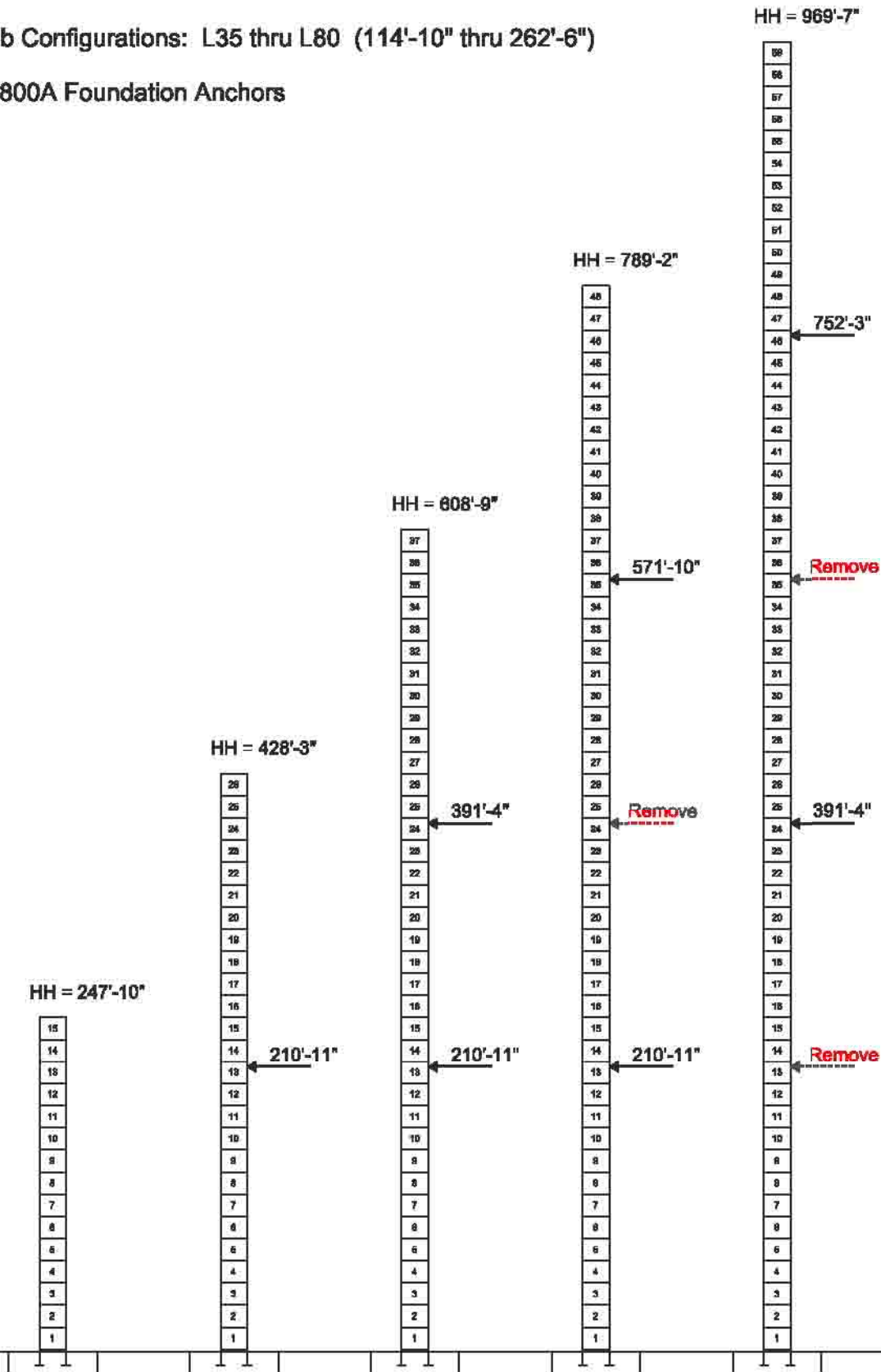
# Maximum Free-Standing Hook Heights



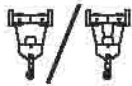
# External Climbing

Jib Configurations: L35 thru L80 (114'-10" thru 262'-6")

P800A Foundation Anchors



# Rated Load Chart



SM-DM Trolley

## Capacity (lbs)

Hook Radius	Jib Length									
	262'-6"	246'-1"	229'-8"	213'-3"	196'-10"	180'-5"	164'-1"	147'-8"	131'-3"	114'-10"
20'-0"	44,092	44,092	44,092	44,092	44,092	44,092	44,092	44,092	44,092	44,092
30'-0"	44,092	44,092	44,092	44,092	44,092	44,092	44,092	44,092	44,092	44,092
40'-0"	44,092	44,092	44,092	44,092	44,092	44,092	44,092	44,092	44,092	44,092
50'-0"	44,092	44,092	44,092	44,092	44,092	44,092	44,092	44,092	44,092	44,092
60'-0"	42,374	44,092	44,092	44,092	44,092	44,092	44,092	44,092	44,092	44,092
70'-0"	35,358	39,405	44,092	44,092	44,092	44,092	44,092	44,092	44,092	44,092
80'-0"	30,159	33,710	40,112	40,230	41,687	43,369	44,042	44,092	44,092	44,092
90'-0"	26,152	29,322	35,015	35,119	36,409	37,898	38,494	38,932	39,166	39,388
100'-0"	22,970	25,836	30,966	31,059	32,217	33,553	34,088	34,481	34,691	34,889
110'-0"	20,830	23,001	27,873	27,757	28,807	30,018	30,503	30,859	31,050	31,230
114'-10"	19,746	22,046	26,293	26,374	27,378	28,537	29,001	29,342	29,524	29,697
120'-0"	18,684	21,112	24,941	25,019	25,979	27,087	27,530	27,856	28,030	
130'-0"	16,876	19,130	22,639	22,710	23,595	24,616	25,025	25,325	25,485	
131'-3"	16,672	18,907	22,380	22,451	23,327	24,338	24,742	25,040	25,199	
140'-0"	15,331	17,437	21,126	21,178	22,031	22,506	22,884	23,163		
147'-8"	14,294	16,301	19,807	19,856	20,665	21,564	21,915	22,046		
150'-0"	13,996	15,974	19,427	19,476	20,271	21,156	21,501			
160'-0"	12,831	14,697	17,945	17,990	18,735	19,563	19,886			
164'-1"	12,401	14,226	17,398	17,442	18,168	18,976	19,290			
170'-0"	11,805	13,573	16,640	16,682	17,382	18,161				
180'-0"	10,895	12,575	15,482	15,522	16,182	16,918				
180'-5"	10,857	12,533	15,433	15,473	16,132	16,865				
190'-0"	10,082	11,685	14,447	14,485	15,111					
196'-10"	9,574	11,127	13,800	13,837	14,440					
200'-0"	9,352	10,884	13,518	13,554						
210'-0"	8,692	10,161	12,678	12,713						
213'-3"	8,491	9,940	12,422	12,456						
220'-0"	8,093	9,504	11,916							
229'-8"	7,564	8,925	11,244							
230'-0"	7,546	8,906								
240'-0"	7,046	8,357								
246'-1"	6,763	8,047								
250'-0"	6,586									
260'-0"	6,162									
262'-6"	6,063									

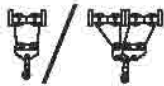
Max. Load Radius										
From	10'-2"	10'-2"	10'-2"	10'-2"	10'-2"	10'-2"	10'-2"	10'-2"	10'-2"	10'-2"
To	58'-0"	63'-6"	73'-8"	73'-10"	78'-2"	78'-10"	79'-11"	80'-9"	81'-2"	81'-6"

**Notes:**

1. The above load chart was calculated using the SM-DM trolley system.
2. Values above the red line can be achieved with 4-part line configuration only.
3. Deduct 463 lbs from values below the red line when using 4-part line configuration instead of 2-part.



# Rated Load Chart



1C-2C Trolley

## 2-Part Capacity (lbs)

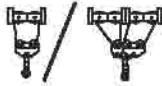
Hook Radius	Jib Length									
	262'-6"	246'-1"	229'-8"	213'-3"	196'-10"	180'-5"	164'-1"	147'-8"	131'-3"	114'-10"
20'-0"	22,046	22,046	22,046	22,046	22,046	22,046	22,046	22,046	22,046	22,046
30'-0"	22,046	22,046	22,046	22,046	22,046	22,046	22,046	22,046	22,046	22,046
40'-0"	22,046	22,046	22,046	22,046	22,046	22,046	22,046	22,046	22,046	22,046
50'-0"	22,046	22,046	22,046	22,046	22,046	22,046	22,046	22,046	22,046	22,046
60'-0"	22,046	22,046	22,046	22,046	22,046	22,046	22,046	22,046	22,046	22,046
70'-0"	22,046	22,046	22,046	22,046	22,046	22,046	22,046	22,046	22,046	22,046
80'-0"	22,046	22,046	22,046	22,046	22,046	22,046	22,046	22,046	22,046	22,046
90'-0"	22,046	22,046	22,046	22,046	22,046	22,046	22,046	22,046	22,046	22,046
100'-0"	22,046	22,046	22,046	22,046	22,046	22,046	22,046	22,046	22,046	22,046
110'-0"	21,601	22,046	22,046	22,046	22,046	22,046	22,046	22,046	22,046	22,046
<b>114'-10"</b>	20,517	22,046	22,046	22,046	22,046	22,046	22,046	22,046	22,046	<b>22,046</b>
120'-0"	19,456	21,883	22,046	22,046	22,046	22,046	22,046	22,046	22,046	
130'-0"	17,647	19,901	22,046	22,046	22,046	22,046	22,046	22,046	22,046	
<b>131'-3"</b>	17,444	19,678	22,046	22,046	22,046	22,046	22,046	22,046	<b>22,046</b>	
140'-0"	16,102	18,208	21,898	21,949	22,046	22,046	22,046	22,046		
<b>147'-8"</b>	15,066	17,073	20,579	20,628	21,436	22,046	22,046	<b>22,046</b>		
150'-0"	14,767	16,745	20,199	20,247	21,042	21,928	22,046			
160'-0"	13,602	15,468	18,716	18,762	19,506	20,335	20,658			
<b>164'-1"</b>	13,172	14,997	18,169	18,213	18,939	19,747	<b>20,062</b>			
170'-0"	12,577	14,344	17,411	17,454	18,154	18,933				
180'-0"	11,667	13,347	16,253	16,293	16,954	17,689				
<b>180'-5"</b>	11,628	13,305	16,205	16,245	16,904	<b>17,637</b>				
190'-0"	10,854	12,456	15,219	15,257	15,882					
<b>196'-10"</b>	10,345	11,899	14,572	14,609	<b>15,212</b>					
200'-0"	10,123	11,656	14,290	14,326						
210'-0"	9,464	10,933	13,450	13,484						
<b>213'-3"</b>	9,262	10,712	13,194	<b>13,228</b>						
220'-0"	8,864	10,276	12,688							
<b>229'-8"</b>	8,336	9,697	<b>12,015</b>							
230'-0"	8,318	9,677								
240'-0"	7,818	9,129								
<b>246'-1"</b>	7,535	<b>8,818</b>								
250'-0"	7,358									
260'-0"	6,934									
<b>262'-6"</b>	<b>6,834</b>									

Max. Load Radius										
From	10'-2"	10'-2"	10'-2"	10'-2"	10'-2"	10'-2"	10'-2"	10'-2"	10'-2"	10'-2"
To	108'-2"	119'-3"	139'-2"	139'-6"	144'-2"	149'-4"	151'-4"	147'-8"	131'-3"	114'-10"

**MD 485B-M20**



# Rated Load Chart



1C-2C Trolley

## 4-Part Capacity (lbs)

Hook Radius	Jib Length									
	262'-6"	246'-1"	229'-8"	213'-3"	196'-10"	180'-5"	164'-1"	147'-8"	131'-3"	114'-10"
20'-0"	44,092	44,092	44,092	44,092	44,092	44,092	44,092	44,092	44,092	44,092
30'-0"	44,092	44,092	44,092	44,092	44,092	44,092	44,092	44,092	44,092	44,092
40'-0"	44,092	44,092	44,092	44,092	44,092	44,092	44,092	44,092	44,092	44,092
50'-0"	44,092	44,092	44,092	44,092	44,092	44,092	44,092	44,092	44,092	44,092
60'-0"	41,187	44,092	44,092	44,092	44,092	44,092	44,092	44,092	44,092	44,092
70'-0"	34,170	38,282	44,092	44,092	44,092	44,092	44,092	44,092	44,092	44,092
80'-0"	28,971	32,579	38,941	38,960	40,464	42,222	42,808	43,311	43,611	43,914
90'-0"	24,964	28,183	33,841	33,858	35,190	36,746	37,265	37,711	37,976	38,185
100'-0"	21,781	24,692	29,791	29,806	31,001	32,397	32,862	33,262	33,500	33,645
110'-0"	19,193	21,852	26,496	26,510	27,593	28,859	29,281	29,643	29,859	29,960
<b>114'-10"</b>	<b>18,108</b>	<b>20,662</b>	<b>25,115</b>	<b>25,128</b>	<b>26,165</b>	<b>27,376</b>	<b>27,780</b>	<b>28,127</b>	<b>28,334</b>	<b>28,418</b>
120'-0"	17,045	19,497	23,763	23,776	24,767	25,925	26,311	26,642	26,840	
130'-0"	15,236	17,512	21,460	21,472	22,385	23,452	23,807	24,113	24,295	
<b>131'-3"</b>	<b>15,032</b>	<b>17,289</b>	<b>21,201</b>	<b>21,212</b>	<b>22,117</b>	<b>23,173</b>	<b>23,526</b>	<b>23,828</b>	<b>24,008</b>	
140'-0"	13,690	15,816	19,493	19,504	20,350	21,339	21,669	21,952		
<b>147'-8"</b>	<b>12,653</b>	<b>14,679</b>	<b>18,173</b>	<b>18,183</b>	<b>18,985</b>	<b>19,922</b>	<b>20,235</b>	<b>20,503</b>		
150'-0"	12,354	14,351	17,793	17,803	18,592	19,514	19,821			
160'-0"	11,188	13,072	16,309	16,319	17,057	17,921	18,208			
<b>164'-1"</b>	<b>10,758</b>	<b>12,600</b>	<b>15,762</b>	<b>15,771</b>	<b>16,491</b>	<b>17,333</b>	<b>17,613</b>			
170'-0"	10,162	11,946	15,003	15,012	15,706	16,518				
180'-0"	9,251	10,948	13,844	13,852	14,508	15,274				
<b>180'-5"</b>	<b>9,213</b>	<b>10,906</b>	<b>13,795</b>	<b>13,804</b>	<b>14,457</b>	<b>15,221</b>				
190'-0"	8,438	10,055	12,809	12,817	13,437					
<b>196'-10"</b>	<b>7,929</b>	<b>9,497</b>	<b>12,161</b>	<b>12,169</b>	<b>12,767</b>					
200'-0"	7,707	9,254	11,879	11,886						
210'-0"	7,047	8,529	11,038	11,046						
<b>213'-3"</b>	<b>6,846</b>	<b>8,309</b>	<b>10,782</b>	<b>10,789</b>						
220'-0"	6,447	7,872	10,275							
<b>229'-8"</b>	<b>5,919</b>	<b>7,292</b>	<b>9,602</b>							
230'-0"	5,901	7,272								
240'-0"	5,400	6,723								
<b>246'-1"</b>	<b>5,117</b>	<b>6,412</b>								
250'-0"	4,940									
260'-0"	4,516									
<b>262'-6"</b>	<b>4,416</b>									

Max. Load Radius										
From	10'-2"	10'-2"	10'-2"	10'-2"	10'-2"	10'-2"	10'-2"	10'-2"	10'-2"	10'-2"
To	56'-8"	62'-2"	72'-0"	72'-0"	74'-4"	77'-1"	78'-0"	78'-9"	79'-3"	79'-9"

**MD 485B-M20**



# Mechanical Data

Function	Hoist Type	Speed vs Weight	2-part					4-part					Motor (hp)	Motor (kW)	Rope Length (ft)
			1st Gear	2nd Gear	3rd Gear	4th Gear	5th Gear	1st Gear	2nd Gear	3rd Gear	4th Gear	5th Gear			
Hoist	66 S5.0 L411	ft/min lbs	125 22,046	190 13,669	302 8,157	486 4,519		62 44,092	95 27,337	151 16,314	243 9,039		108	79	1,348
	102 S5.0 L411	ft/min lbs	171 22,046	276 13,779	427 8,267	882 4,519		85 44,092	138 27,558	213 16,535	341 9,039		168	122	1,348
	150 LCC 50	ft/min lbs	190 22,046	223 16,535	282 13,228	374 8,614	453 2,756	85 44,092	112 33,069	141 26,455	187 13,228	226 5,512	177	132	1,913
Trolley	10 DVF 10	ft/min	0 to 262 (44,092 lbs) ? 0 to 328 (26,455 lbs) ? 0 to 361 (13,228 lbs)									14.5	10.8		
Swing	RVF 183 optima+	rpm	0.80									3 x 14.5	3 x 10.8		

**Power Requirements:** 480 V (+6% or -10%) 60 Hz measured at turn table.

**Amperage:** 66 S5.0 L411: 197 Amp (3 phase service with ground)

**Amperage:** 102 S5.0 L411: 251 Amp (3 phase service with ground)

**Amperage:** 150 LCC 50: 268 Amp (3 phase service with ground)

**Notes:**

1. The 150 LCC 50 is the standard hoist option for the MD 485B-M20. Other hoist options must be at the request of the customer.
2. Values given under "Rope Length" are for drum spooling capacity only.

Constant improvement and engineering progress make it necessary that we reserve the right to make specification, equipment, and price changes without notice. Illustrations shown may include optional equipment and accessories, and may not include all standard equipment. Product brochures are for illustration purposes only. Contact the manufacturer or consult the operation manual for specific details concerning this product.

## Manitowoc Crane Company, Inc.

US Tower Crane Division  
1585 Buchanan Trail East  
Shady Grove, PA 17256-0021, USA

Tel: 717-597-8121

Fax: 717-597-4062

# MD 485B-M20

