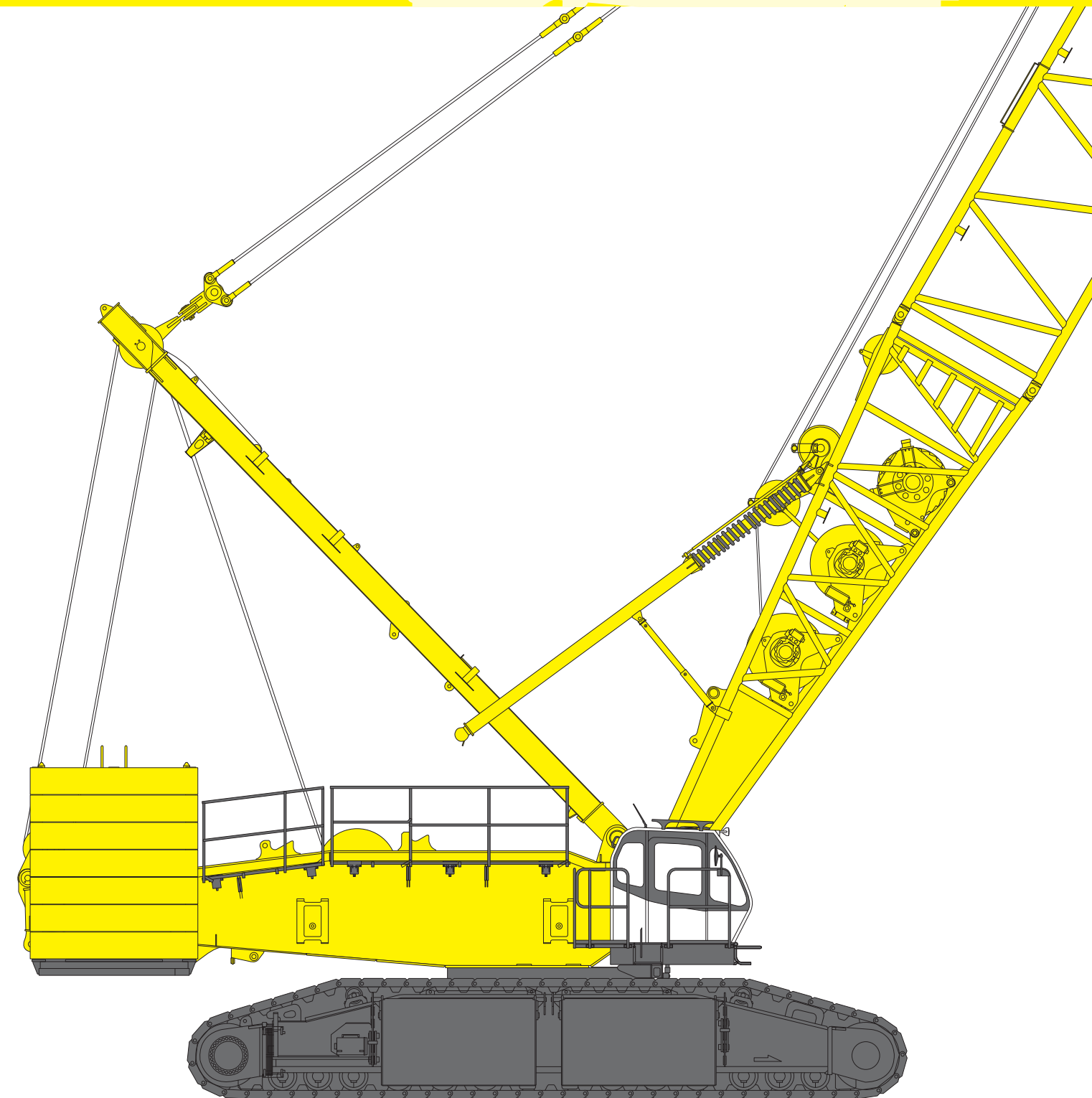


HYDRAULIC CRAWLER CRANE *SL4500R*

STANDARD CONFIGURATION

KOBELCO

Model: SL4500



Max. Lifting Capacity: 440 US ton x 18 ft
Max. Boom Length: 315 ft
Max. Luffing jib Combinations: 256 ft + 217 ft

CONFIGURATION

STD Luffing Boom

Max. Lifting Capacity:
881,800 lbs x 18 ft
Max. Boom Length: 256 ft



STD Long Boom

Max. Lifting Capacity:
250,200 lbs x 32 ft
Max. Boom Length: 315 ft



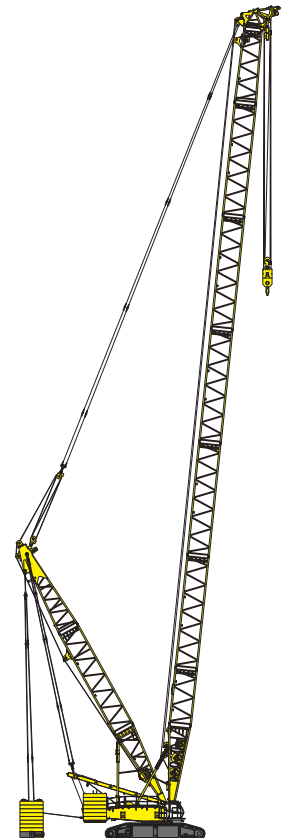
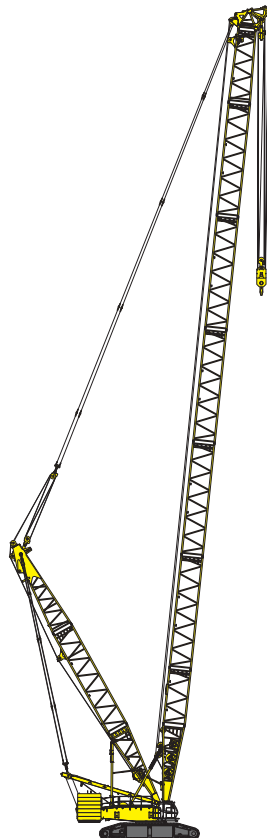
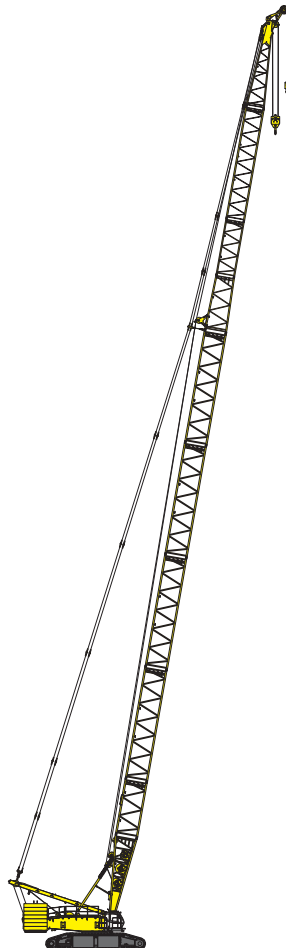
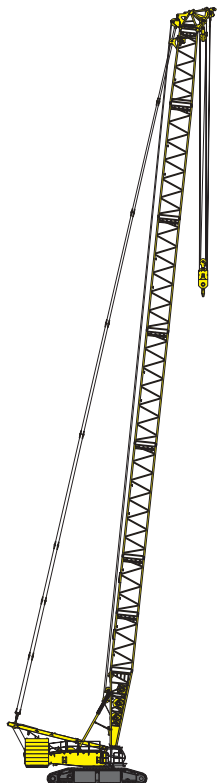
HL Luffing Boom

Max. Lifting Capacity:
771,600 lbs x 20.0 ft
Max. Boom Length: 276 ft



SHL Luffing Boom

Max. Lifting Capacity:
771,600 lbs x 38.0 ft
Max. Boom Length: 276 ft



**STD
Luffing Jib**

Max. Lifting Capacity:
244,000 lbs x 55 ft

Max. Combination:
217 ft + 217 ft



**HL
Luffing Jib**

Max. Lifting Capacity:
248,200 lbs x 55 ft

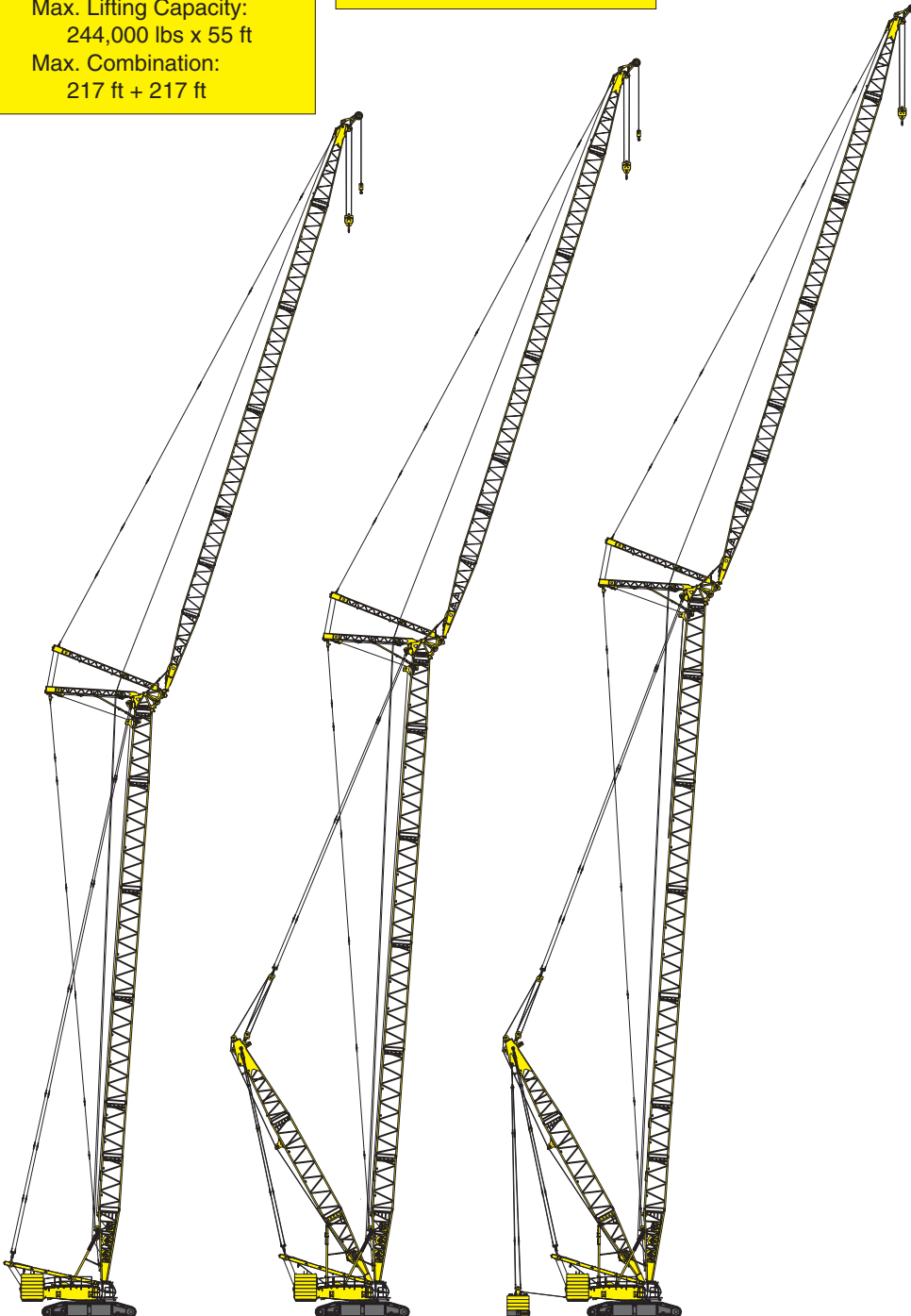
Max. Combination:
236 ft + 217 ft



**SHL
Luffing Jib**

Max. Lifting Capacity:
248,200 lbs x 55 ft

Max. Combination:
256 ft + 217 ft



CONTENTS

Configuration 1

Specifications 3

General Dimensions 5

STANDARD

Boom and Jib
Arrangements 7

Working Ranges 9

Luffing Boom
Supplemental Data 14

Luffing Jib
Supplemental Data 15

Luffing Boom
Lifting Capacities 19

Long Boom
Lifting Capacities 21

Luffing Jib
Lifting Capacities 23

HEAVY LIFT

HEAVY LIFT/
SUPER HEAVY LIFT
Boom and Jib
Arrangements 29

Working Ranges 31

Luffing Boom
Lifting Capacities 35

Luffing Jib
Lifting Capacities 39

SUPER HEAVY LIFT

Working Ranges 45

Luffing Boom
Lifting Capacities 49

Luffing Jib
Lifting Capacities 53

Transportation Plan 59

Assembly/
Disassembly 60

Parts and Attachments 61

SPECIFICATIONS



Power Plant

Model: Hino diesel engine E13C-UV

Type: Water-cooled, direct fuel injection, with turbocharger
Complies with NRMM (Europe) Stage IIIA and US EPA Tier III.

Displacement: 788 cu in (12.913 liters)

Rated Power: 429 HP/2,000 rpm (320 kW/2,000 min⁻¹)

Max. torque: 1,218 lb-ft/1,300 rpm (1,650 N-m/1,300 min⁻¹)

Cooling system: Liquid, recirculating bypass

Starter: 24 V/6 kW

Radiator: Corrugated type core, thermostatically controlled

Air cleaner: Dry type with replaceable paper element

Throttle: Twist grip type hand throttle, electrically actuated

Fuel filter: Replaceable paper element

Batteries: Two 12V x 136Ah/5HR capacity batteries, parallel connected.

Fuel tank capacity: 158 US gal. (600 liters)



Hydraulic System

Six variable displacement piston pumps are driven by heavy-duty pump drive. Two variable displacement pumps are used in H1 (main hook hoist) and left hand side propel circuit. Two variable displacement pumps are used in H2 (auxiliary hook hoist) and right hand side propel circuit. One of the other two pumps is used in W1 (boom), W2 (jib) or W3 (SHL mast) hoist circuit, and the other is used in the swing circuit.

Control: Full-flow hydraulic control system for infinitely variable pressure to all winches, propel and swing.

Controls respond instantly to the touch, delivering smooth function operation.

Cooling: Oil-to-air heat exchanger (plate-fin type)

Filtration: Full-flow and bypass type with replaceable element

Electrical system: All wiring corded for easy servicing, individual fused branch circuits.

Max. relief valve pressure: 4,640 psi (32.0 MPa)

Reservoir capacity: 188 US gal. (710 liters)



Boom Hoisting System

Powered by a hydraulic motor through a planetary reducer.

Brake: A spring-set, hydraulically released multiple-disc brake is mounted on the boom hoist motor and operated through a counter-balance valve.

Drum lock: External ratchet for locking drum.

Drum: Double drum, grooved for 28 mm dia. wire rope.

Line speed: Double line on first drum layer

Hoisting/Lowering: 66~7 ft/min (20~2 m/min) x 2

Boom hoist reeving: 28 parts of 28 mm dia. high strength wire rope

Boom backstops: Required for all boom lengths



Load Hoist System

H1 (Front) and H2 (Rear) drums for load hoist powered by a hydraulic variable plunger motors, driven through planetary reducers.

Brake: A spring-set, hydraulically released multiple-disc brake is mounted on the hoist motor and operated through a counter-balance valve.

Drum lock: External ratchet for locking drum.

Drums:

H1 (Front) and H2 (Rear) :

24.8 " (630 mm) P.C.D. x 39.9" (1,014 mm) Lg. wide drum, grooved for 28 mm wire rope.

Rope capacity is 2,590 ft (790 m) working length.

Note: Rope lengths listed above denote drum capacity and may differ from actual rope lengths supplied when machinery is shipped.

Line speed: 360 ~ 10 ft/min (110 ~ 3 m/min^{*1})

Single line on the first layer

Rated line pull: 29,700 lbs (132 kN)



Swing System

Swing unit is powered by hydraulic motor driving spur gears through planetary reducers (3 sets), the swing system provides 360° rotation.

Swing parking brakes: A spring-set, hydraulically released multiple-disc brake is mounted on swing motor.

Swing circle: Triple-row roller bearing with an integral internally cut swing gear.

Swing speed: 1.2 min⁻¹ {rpm}



Upper Structure

Torsion-free precision machined upper frame. All components are located clearly and service friendly. Engine with low noise level.



Cab & Control

Totally enclosed, full vision cab with safety glass, fully adjustable, high backed seat with a head-rest and armrests, and intermittent wiper and window washer (roof and front window).

Cab fittings:

Air conditioner, convenient compartment (for tool), cup holder, ashtray, cigarette lighter, sun visor, roof blind, tinted glass, floor mat, foot-rest, shoe tray

Controls:

Five adjustable levers for all winches and swing controls

SL4500B



Lower Structure

Steel-welded carbody with axles. Crawler assemblies are designed with quick disconnect feature for individual removal as a unit from axles. Crawler belt tension is maintained by hydraulic jack force on the track-adjusting bearing block.

Crawler drive: Two independent hydraulic propel drive is built into each crawler side frame. Each drive consists of a hydraulic motor propelling a driving tumbler through a planetary gear box. Hydraulic motor and gear box are built into the crawler side frame within the shoe width.

Crawler brakes: Spring-set, hydraulically released parking brakes are built into each propel drive.

Steering mechanism: A hydraulic propel system provides both skid steering (driving one track only) and counter-rotating steering (driving each track in opposite directions).

Track rollers: Sealed track rollers.

Shoes (flat): 4' (1,220 mm) wide each crawler

Max. travel speed: 0.6/0.4 mph (1.0/0.6 km/h)

Max. gradeability: 20%



Weight

Including base machine, counterweights = 352,700 lbs, carbody weights = 112,400 lbs, crawler weight = 44,100 lbs, 79 ft Luffing boom and 21,100 lbs hook block. Not include quick connection STD device and upper transflifter.

Weight: Approx. 910,500 lbs (413 metric ton)*1

Ground pressure: 25.8 psi (25.8 kPa)*1



Attachment

Boom and Jib:

Welded lattice construction using tubular, high-tensile steel chords with pin connections between sections.

Boom and Jib Length

	Min. Length (Min. Combination)	Max. Length (Max. Combination)
STANDARD		
Luffing Boom	79 ft	256 ft
Luffing Jib	79 ft + 79 ft	217 ft + 217 ft
HEAVY LIFT		
Luffing Boom	98 ft	276 ft
Luffing Jib	98 ft + 79 ft	236 ft + 217 ft
SUPER HEAVY LIFT		
Luffing Boom	98 ft	236 ft
Luffing Jib	98 ft + 79 ft	256 ft + 217 ft

Main Specifications (Model: SL4500)

Lift Enhancer	STD	HL	SHL
HL Mast	-	98 ft	98 ft
Additional Weight	-	-	~551,100 lbs
Luffing Boom			
Max. Lifting Capacity	881,800 lbs 18 ft	771,600 lbs 20.0 ft	771,600 lbs 38.0 ft
Length	79 ~ 256 ft	98 ~ 276 ft	98 ~ 276 ft
Long Boom			
Max. Lifting Capacity	250,200 lbs	-	-
Length	197 ~ 315 ft	-	-
Luffing Jib			
Max. Lifting Capacity	250,200 lbs	250,200 lbs	250,200 lbs
Boom (Min ~ Max)	79 ~ 217 ft	98 ~ 236 ft	98 ~ 256 ft
Jib (Min ~ Max)	79 ~ 217 ft	79 ~ 217 ft	79 ~ 217 ft
Luffing Angle	66β ~ 86β		
Power Plant			
Model	Hino E13C-UV		
Engine Output	429 HP (320 kW)/2,000 rpm (min ⁻¹)		
Fuel Tank Capacity	158 US gal. (600 liters)		

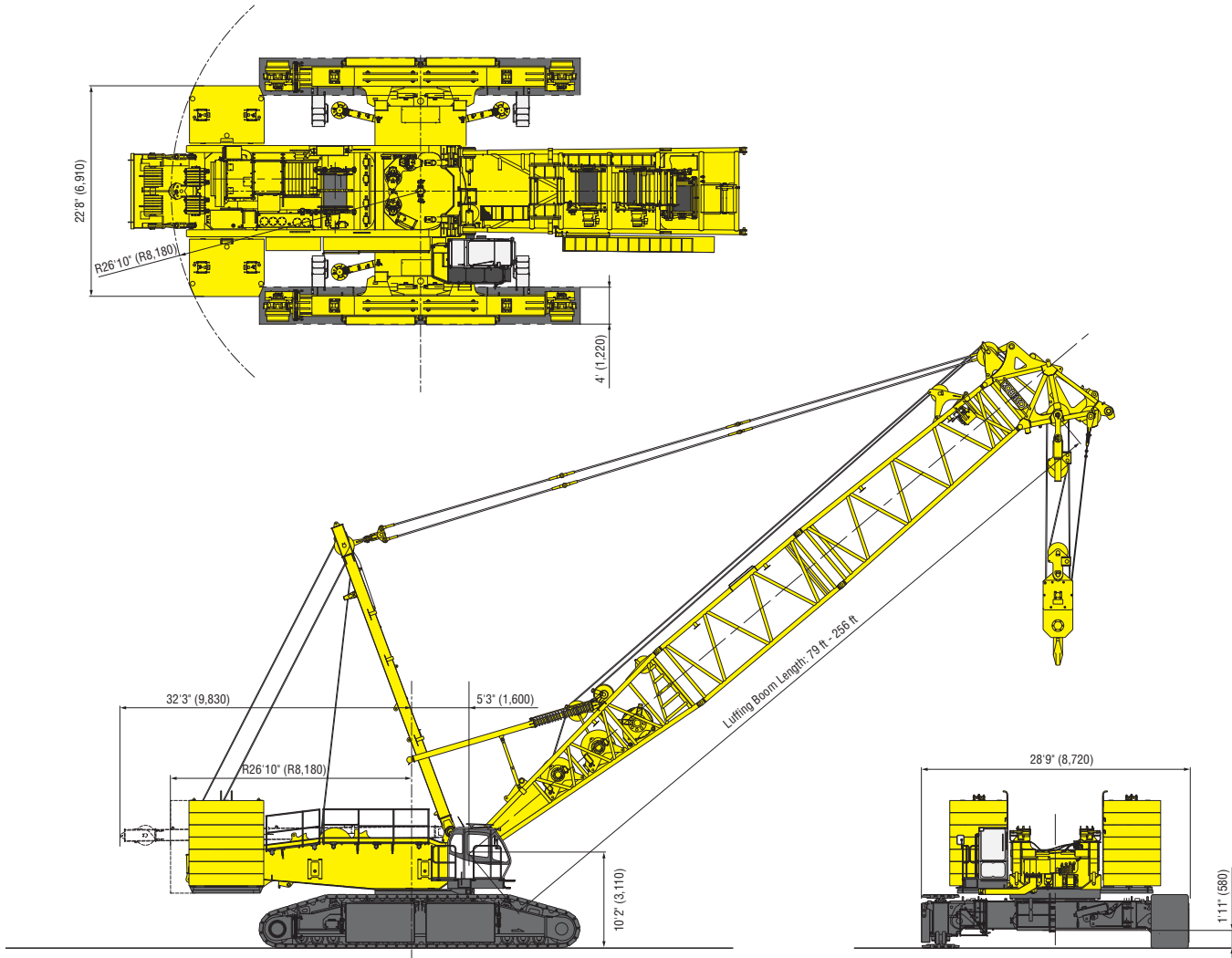
Hoist Winch (H1, H2)	
Max. Line Speed	360 ft (110 m/min): 1st layer
Rated Line Pull (Single line)	30,860 lbs (137 kN)
Wire Rope Diameter	28 mm
Wire Rope Length	2,590 ft (790 m)
Working Speed	
Swing	1.2 rpm (min ⁻¹)
Travel	0.6/0.4 mph (1.0/0.6 km/h)
Hydraulic System	
Pumps	6 variable displacement
Max. Pressure	4,640 psi (32.0 MPa)
Hydraulic Tank Capacity	188 US gal (710 liters)
Weight	
Working Weight*	881,800 lbs
Ground Pressure*	25.1 psi (173 kPa)
Counterweight	Upper: 352,700 lbs (160 metric ton)
	Lower: 112,400 lbs (51 metric ton) + 44,100 lbs (20 metric ton)

*1: Including upper and lower machines, counterweights = 352,700 lbs (160 metric ton), carbody weights = 112,400 lbs (51 metric ton), crawler weights = 44,100 lbs (20 metric ton), 79 ft luffing boom, and 21,100 lbs hook block. Not include quick connection device and upper transflifter

GENERAL DIMENSIONS

Crane Boom

Unit: ft-in (mm)



Lift Enhancer

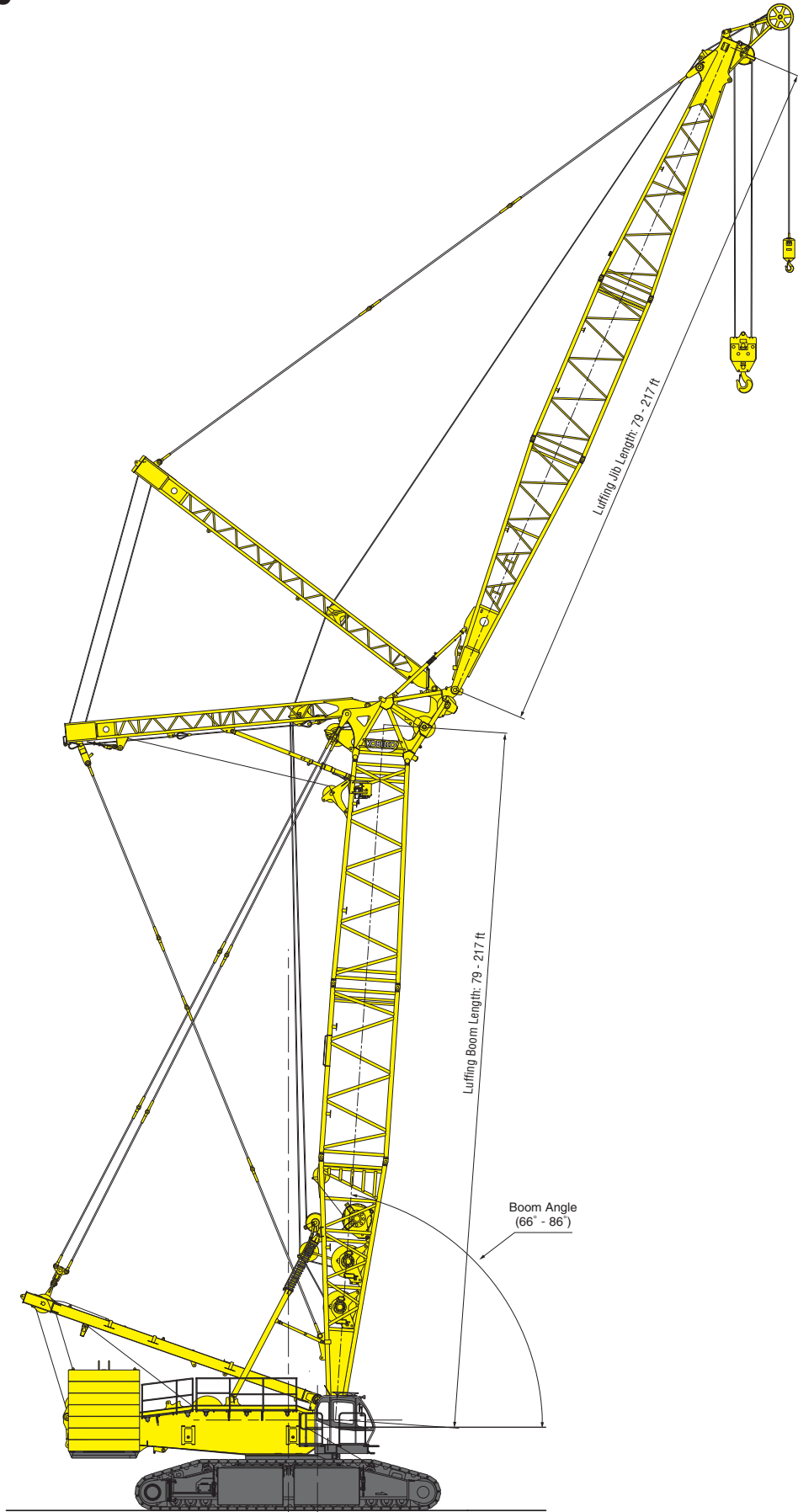


SHL CRANE

SHL LUFFING

Luffing Jib

Unit: ft-in (mm)



STANDARD

BOOM AND JIB ARRANGEMENTS

Luffing Boom Arrangements for Crane

Boom length ft (m)	Boom arrangement
79 (24)	
98 (30)	※
118 (36)	※
138 (42)	※
157 (48)	※
177 (54)	※
197 (60)	※
217 (66)	※
236 (72)	※
256 (78)	※

Symbol	Boom Length	Remarks
	29.5 ft (9.0 m)	Boom Base
	25.6 ft (7.8 m)	Tapered Boom
	19.7 ft (6.0 m)	Insert Boom
	39.4 ft (12.0 m)	Insert Boom
	3.9 ft (1.2 m)	Boom Top

※ indicates the most flexible combination of insert luffing booms, which can be modified to form all shorter luffing boom arrangements.

Long Boom Arrangements

Boom length ft (m)	Boom arrangement
197 (60)	
217 (66)	※
236 (72)	※
256 (78)	※
276 (84)	※
295 (90)	※
315 (96)	※

Symbol	Boom Length	Remarks
	29.5 ft (9.0 m)	Boom Base
	20 ft (6.0 m)	Tapered Boom
	19.7 ft (6.0 m)	Insert Boom
	39.4 ft (12.0 m)	Insert Boom
	19.7 ft (6.0 m)	Luffing Insert Jib
	39.4 ft (12.0 m)	Luffing Insert Jib
	29.5 ft (9.0 m)	Jib Top

※ indicates the most flexible combination of insert long booms, which can be modified to form all shorter long boom arrangements.

Luffing Boom Arrangements for Luffing

Boom length ft (m)	Boom arrangement
79 (24)	
98 (30)	※
118 (36)	※
138 (42)	※
157 (48)	※
177 (54)	※
197 (60)	※
217 (66)	※
236 (72)	※

Symbol	Boom Length	Remarks
	29.5 ft (9.0 m)	Boom Base
	25.6 ft (7.8 m)	Tapered Boom
	19.7 ft (6.0 m)	Insert Boom
	39.4 ft (12.0 m)	Insert Boom
	3.9 ft (1.2 m)	Boom Top

※ indicates the most flexible combination of insert long booms, which can be modified to form all shorter long boom arrangements.

Luffing Jib Arrangements

Boom length ft (m)	Jib arrangement
79 (24)	
98 (30)	※
118 (36)	※
138 (42)	※
157 (48)	※
177 (54)	※
197 (60)	※
217 (66)	※

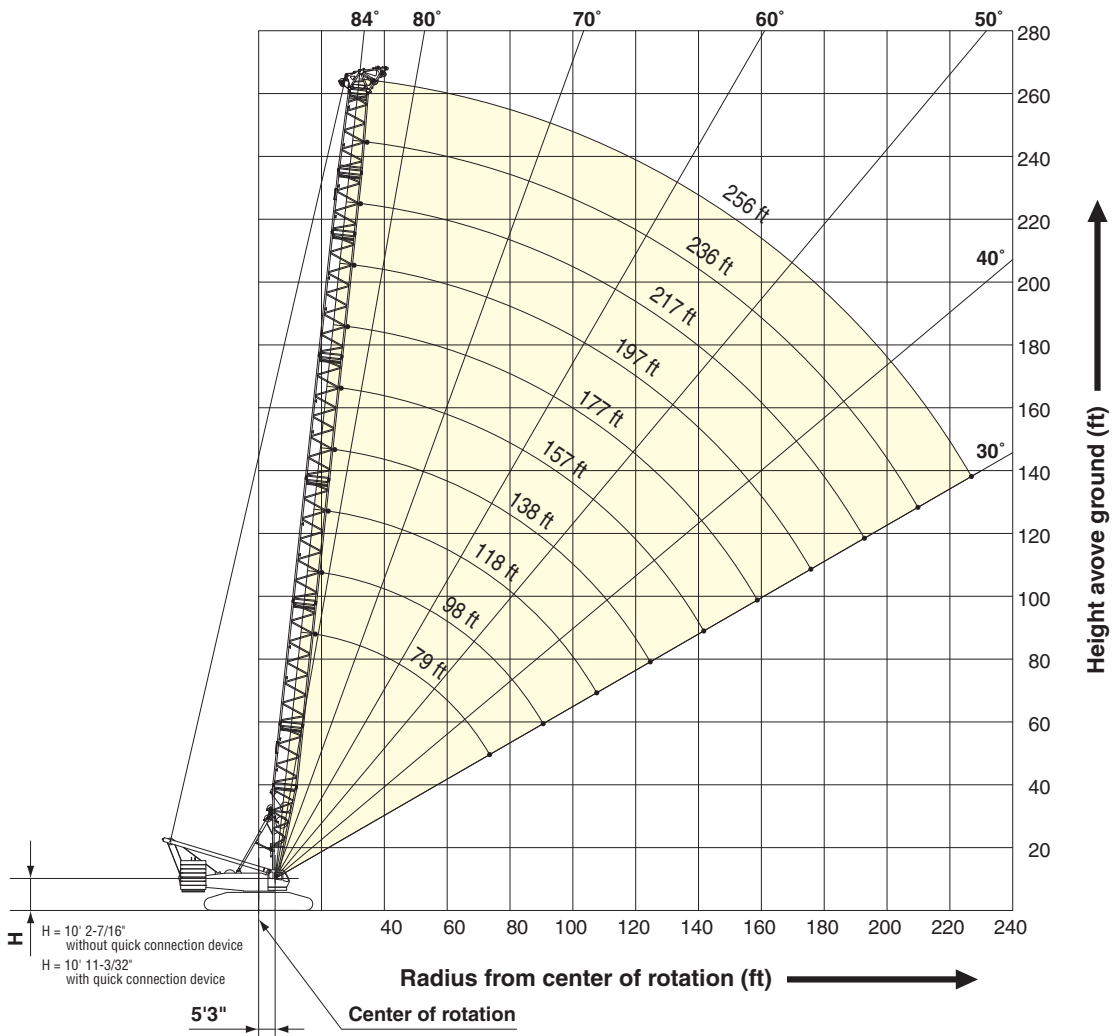
Symbol	Jib Length	Remarks
	29.5 ft (9.0 m)	Jib Base
	19.7 ft (6.0 m)	Luffing Insert Jib
	39.4 ft (12.0 m)	Luffing Insert Jib
	29.5 ft (9.0 m)	Jib Top

※ indicates the most flexible combination of insert luffing jibs, which can be modified to form all shorter luffing jib arrangements.

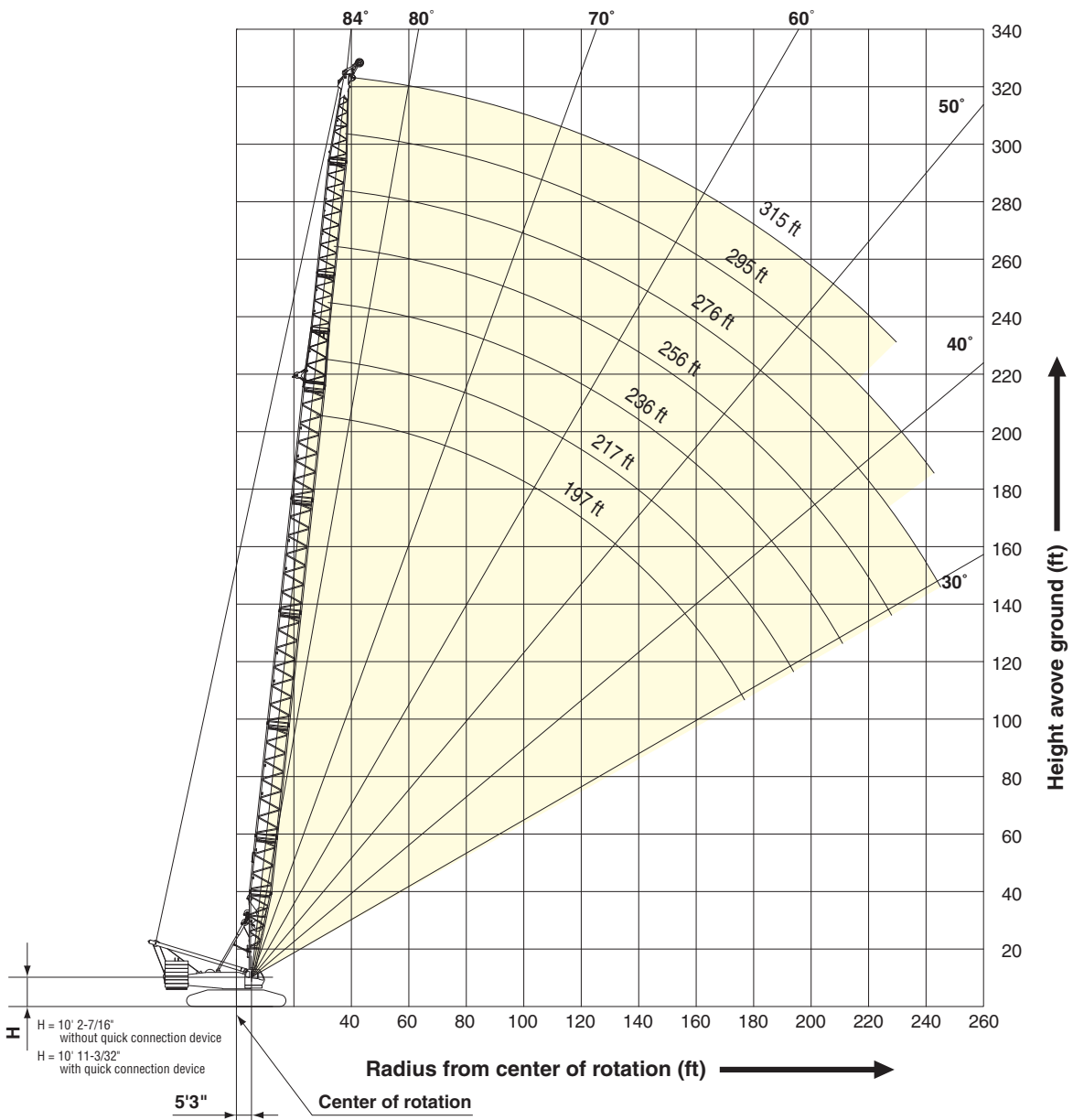
STANDARD

WORKING RANGES

Luffing Boom



Long Boom

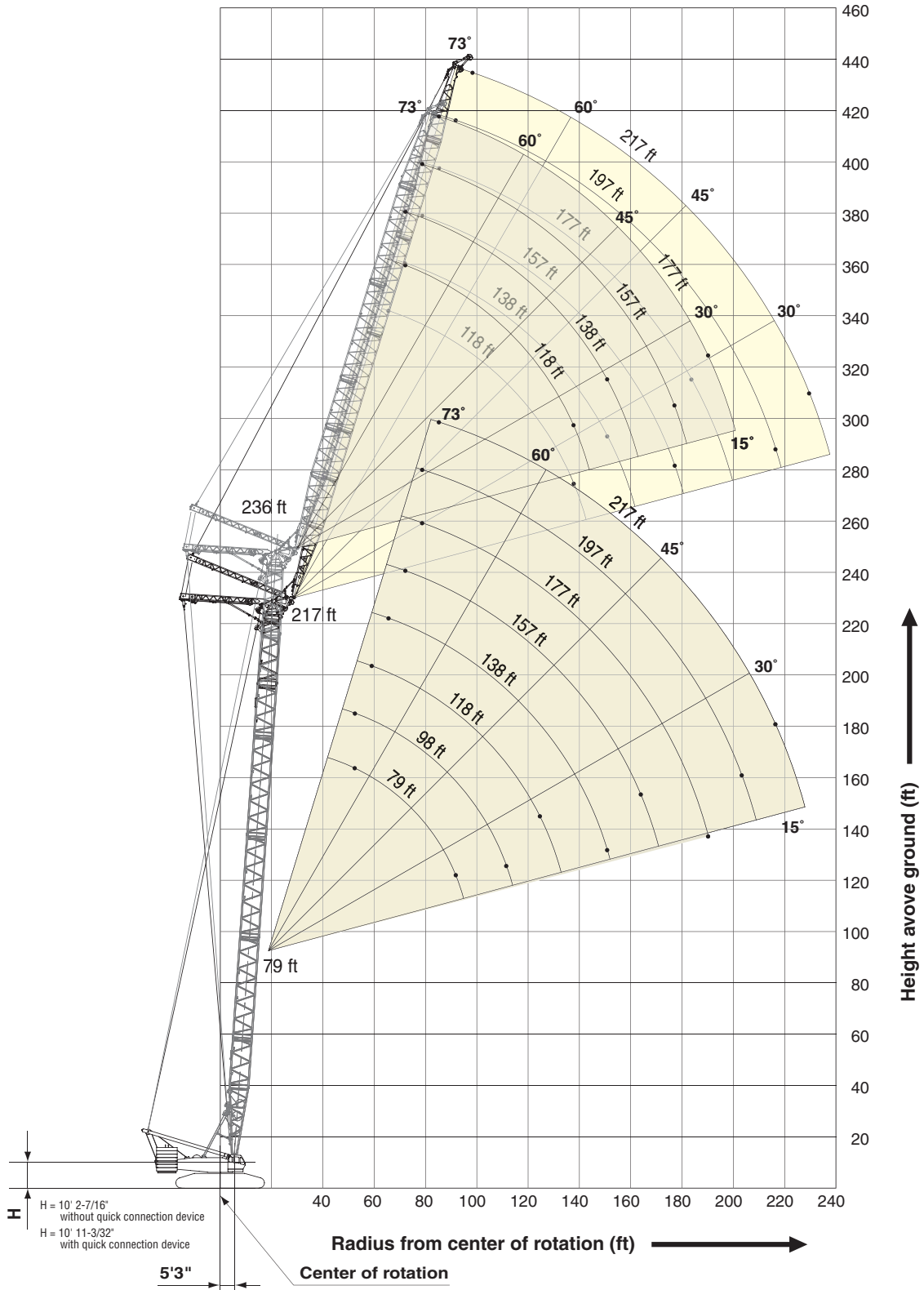


STANDARD

WORKING RANGES

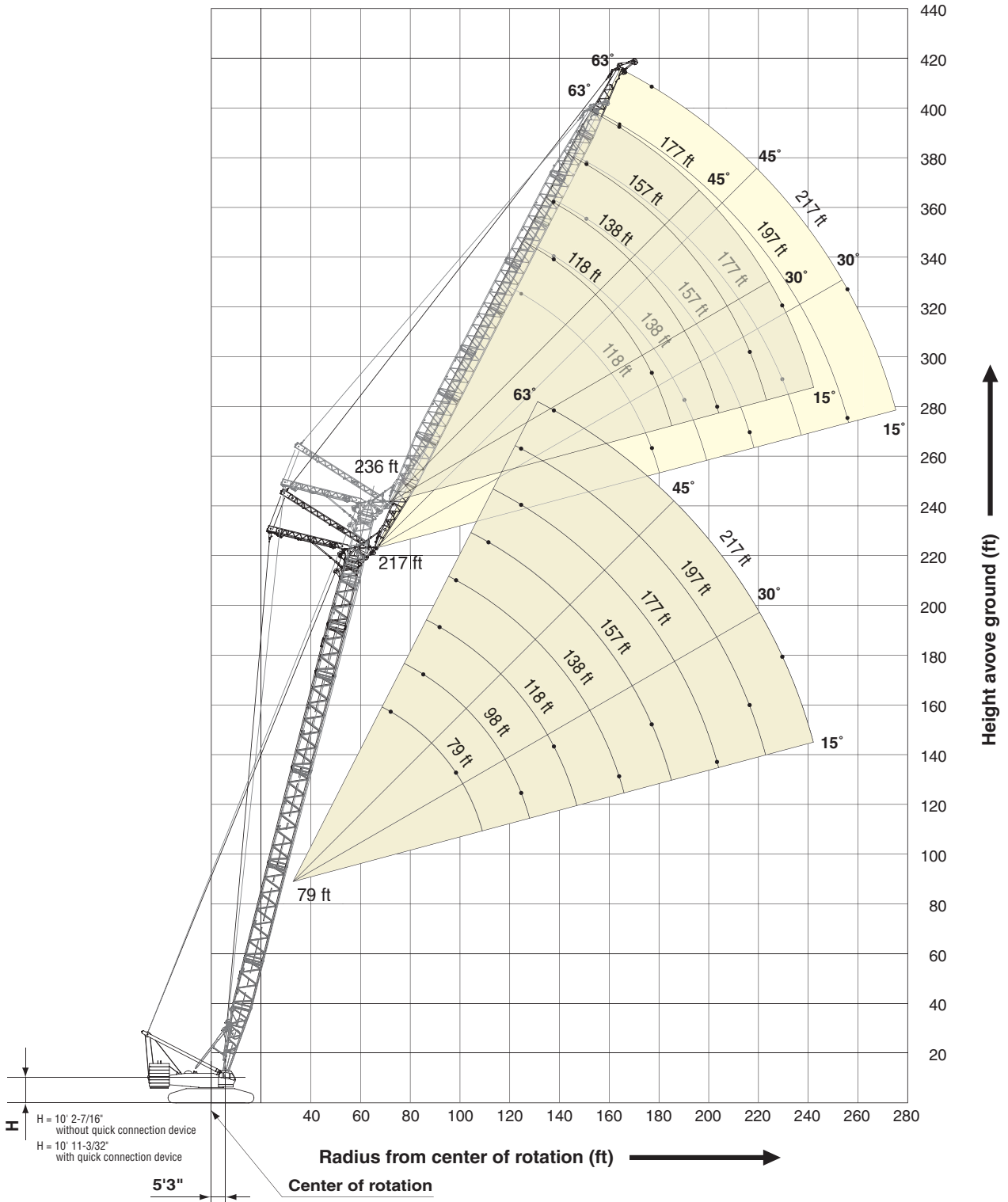
Luffing Jib

Boom Angle: 86° (217 ft Boom / 236 ft Boom)



Luffing Jib

Boom Angle: 76° (217 ft Boom / 236 ft Boom)



LUFFING BOOM SUPPLEMENTAL DATA

- Rated loads included in the charts are the maximum allowable freely suspended loads at a given boom length, boom angle and load radius, and have been determined for the machine standing level on firm supporting surface under ideal operating conditions. The user must limit or de-rate rated loads to allow for adverse conditions (such as soft or uneven ground, out-of-level conditions, wind, side loads, pendulum action, jerking or sudden stopping of loads, inexperience of personnel, multiple machine lifts, and traveling with a load).
- Rated loads do not exceed 75% of minimum tipping loads. Rated loads based on factors other than machine stability such as structural competence are shown by asterisk * in the charts.
- The machine must be reeved and set-up as stated in the operation manual and all the instruction manuals. If these manuals are missing, obtain replacements.
 - Boom backstops are required for all boom lengths.
 - The crane must be leveled to within 1% on a firm supporting surface.
- Do not attempt to lift where no radius on load is listed as crane may tip or collapse.
- Attempting to lift more than rated loads may cause machine to tip or collapse.
Do not tip machine to determine rated loads.
- Weight of hooks, hook blocks, slings and other lifting devices are a part of the total load. Their total weight must be subtracted from the rated load to obtain the weight that can be lifted.
- The minimum rated load show below.

Minimum Rated Load	
Luffing Boom	Long Boom
5,200 lbs	6,800 lbs

- When lifting over boom point with auxiliary sheave, rated loads for the boom must be deducted as shown below.

Deduction Auxiliary Frame	
Luffing Boom	Long Boom
440 lbs	1,550 lbs

- In case of auxiliary sheave for luffing boom, the total lifting load is the value for 440lbs deducted from rated loads for the luffing boom without auxiliary sheave, but it should not exceed 29,700lbs.

- In case of auxiliary sheave for long boom, the total lifting load is the value for 1,550lbs deducted from rated loads for the long boom without auxiliary sheave, but it should not exceed 29,700lbs.
- Auxiliary sheave ratings at any radius from center of rotation are the same as boom ratings shown in table for main boom when operated at the same radius.
But maximum angle is the same as main boom maximum angle.
- Boom lengths for auxiliary sheave can be equipped.

STD		HL/SHL
Luffing Boom	Long Boom	Luffing Boom
79 ft ~ 256 ft (24 m ~ 78 m)	197 ft ~ 315 ft (60 m ~ 96 m)	118 ft ~ 276 ft (36 m ~ 84 m)

The minimum main hook block weight is 4,400lbs for auxiliary sheave ratings.

- Maximum hoist load for number of reeving parts of line for hoist rope.

Main Boom Hoist Loads (Double Drum)

No. of Parts of Line	12(2x6)	16(2x8)	20(2x10)	24(2x12)
Maximum Loads (lbs)	343,900	448,600	550,000	648,100

No. of Parts of Line	28(2x14)	32(2x16)	36(2x18)
Maximum Loads (lbs)	740,700	831,100	881,800

Main Boom Hoist Loads (Single Drum)

No. of Parts of Line	1	2	3	4	5
Maximum Loads (lbs)	29,700	59,400	88,100	116,800	144,400

No. of Parts of Line	6	7	8	9	10
Maximum Loads (lbs)	171,900	198,400	223,700	250,200	274,400

No. of Parts of Line	11	12	13	14	15
Maximum Loads (lbs)	299,800	324,000	347,200	370,300	393,500

No. of Parts of Line	16	17	18
Maximum Loads (lbs)	415,500	437,600	440,900

Auxiliary Hoist Loads

No. of Parts of Line	1
Maximum Loads (lbs)	29,700

- Rated loads listed apply only to the machine as originally manufactured and designed by KOBELCO CRANES CO.,LTD. Modifications to this machine or use of equipment other than that specified can reduce operating capacity.
- Designed and rated to comply with ASME Code B30.5.

Operation of this equipment in excess of rated loads or disregard of instruction voids the warranty.

LUFFING JIB SUPPLEMENTAL DATA

- Rated loads included in the charts are the maximum allowable freely suspended loads at a given boom length, boom angle and load radius, and have been determined for the machine standing level on firm supporting surface under ideal operating conditions. The user must limit or de-rate rated loads to allow for adverse conditions (such as soft or uneven ground, out-of-level conditions, wind, side loads, pendulum action, jerking or sudden stopping of loads, inexperience of personnel, multiple machine lifts, and traveling with a load).
- Rated loads do not exceed 75% of minimum tipping loads. Rated loads based on factors other than machine stability such as structural competence are shown by asterisk * in the charts.
- The machine must be reeved and set-up as stated in the operation manual and all the instruction manuals if these manuals are missing, obtain replacements.
 - Boom backstops are required for all boom lengths.
 - The crane must be leveled to within 1% on a firm supporting surface.

- Do not attempt to lift where no radius on load is listed as crane may tip or collapse.
- Attempting to lift more than rated loads may cause machine to tip or collapse.
Do not tip machine to determine rated loads.
- Weight of hooks, hook blocks, slings and other lifting devices are a part of the total load. Those total weight must be subtracted from the rated load to obtain the weight that can be lifted.
- The minimum rated load is 11,500lbs.
- The total load that can be lifted over a jib is limited by rated jib loads.
- The total load that can be lifted over an auxiliary sheave should not exceed 29,700lbs.

10. Luffing boom and jib combinations.

		Jib Length							
		79ft (24m)	98ft (30m)	118ft (36m)	138ft (42m)	157ft (48m)	177ft (54m)	197ft (60m)	217ft (66m)
Boom Length	79 ft (24 m)	○*	○*	○*	○*	○*	○*	○*	○*
	98 ft (30 m)	○	○	○	○	○	○	○	○
	118 ft (36 m)	×	○	○	○	○	○	○	○
	138 ft (42 m)	×	○	○	○	○	○	○	○
	157 ft (48 m)	×	○	○	○	○	○	○	○
	177 ft (54 m)	×	○	○	○	○	○	○	○
	197 ft (60 m)	×	×	○	○	○	○	○	○
	217 ft (66 m)	×	×	○	○	○	○※	○※	○※
	236 ft (72 m)	×	×	○※	○※	○※	○※▲	○***	○***
	256 ft (78 m)	×	×	○***	○***	○***	○***	○**	○**
	276 ft (84 m)	×	×	○**	○**	○**	○**	×	×

- × : All luffing boom jib combinations which is none.
- : All luffing boom jib combinations which is allowed.
- * : STD luffing boom jib combinations which is allowed.
- ※ : STD luffing boom jib combinations - When erecting and lowering the boom, it should be erected over the front of the crawlers, and the blocks for erection must be placed at the tip (front) of the crawlers.
- ▲ : STD luffing boom jib combinations which is needed 22,050 lbs additional weights.
- ** : SHL luffing jib combinations which is allowed.
- *** : HL and SHL luffing jib combinations which is allowed. HLL luffing jib combinations - when erecting and lowering the boom, it should be erected over the front of the crawlers, and the blocks for erection must be placed at the tip (front) of the crawlers.

SL4500B

11. Maximum hoist load for number of reeving parts of line for hoist rope.

Jib Hoist Loads (Single Drum)

No. of Parts of Line	1	2	3	4	5
Maximum Loads (lbs)	29,700	59,400	88,100	116,800	144,400
No. of Parts of Line	6	7	8	9	
Maximum Loads (lbs)	171,900	198,400	223,700	250,200	

Auxiliary Hoist Loads

No. of Parts of Line	1
Maximum Loads (lbs)	29,700

12. Luffing erection jib offset angle

STD LUFFING ERECTION JIB OFFSET ANGLE

(UNIT :DEGREES)

Boom Length	Jib Length							
	79 ft	98 ft	118 ft	138 ft	157 ft	177 ft	197 ft	217 ft
79 ft	40 ~ 120	40 ~ 110	40 ~ 100	40 ~ 90	40 ~ 90	40 ~ 90	40 ~ 80	40 ~ 80
98 ft	40 ~ 120	40 ~ 120	40 ~ 110	40 ~ 100	40 ~ 100	40 ~ 90	40 ~ 90	40 ~ 90
118 ft	×	40 ~ 120	40 ~ 120	40 ~ 110	40 ~ 100	40 ~ 100	40 ~ 90	40 ~ 90
138 ft	×	40 ~ 120	40 ~ 120	40 ~ 120	40 ~ 110	40 ~ 110	40 ~ 100	40 ~ 100
157 ft	×	40 ~ 120	40 ~ 120	40 ~ 120	40 ~ 120	40 ~ 110	50 ~ 110	60 ~ 100
177 ft	×	40 ~ 120	40 ~ 120	40 ~ 120	50 ~ 120	70 ~ 120	70 ~ 110	80 ~ 110
197 ft	×	×	60 ~ 120	80 ~ 120	80 ~ 120	90 ~ 120	90 ~ 120	90 ~ 110
217 ft	×	×	100 ~ 120	110 ~ 120	110 ~ 120	*90 ~ 120	*90 ~ 120	*100 ~ 120
236 ft	×	×	*110 ~ 120	*110 ~ 120	*110 ~ 120	*110 ~ 120	×	×

HL LUFFING ERECTION JIB OFFSET ANGLE

Boom Length	Jib Length							
	79 ft	98 ft	118 ft	138 ft	157 ft	177 ft	197 ft	217 ft
98 ft	40 ~ 120	40 ~ 110	40 ~ 110	40 ~ 100	40 ~ 100	40 ~ 90	40 ~ 90	40 ~ 90
118 ft	×	40 ~ 120	40 ~ 120	40 ~ 110	40 ~ 100	40 ~ 100	40 ~ 90	40 ~ 90
138 ft	×	40 ~ 120	40 ~ 120	40 ~ 120	40 ~ 110	40 ~ 110	40 ~ 100	40 ~ 100
157 ft	×	40 ~ 120	40 ~ 120	40 ~ 120	40 ~ 120	40 ~ 110	40 ~ 110	40 ~ 100
177 ft	×	40 ~ 120	40 ~ 120	40 ~ 120	40 ~ 120	40 ~ 120	50 ~ 110	60 ~ 110
197 ft	×	×	40 ~ 120	40 ~ 120	50 ~ 120	70 ~ 120	70 ~ 120	80 ~ 110
217 ft	×	×	60 ~ 120	80 ~ 120	80 ~ 120	90 ~ 120	90 ~ 120	100 ~ 120
236 ft	×	×	110 ~ 120	110 ~ 120	110 ~ 120	110 ~ 120	*100 ~ 120	*100 ~ 120
256 ft	×	×	*120	*120	*120	*120	×	×

SHL LUFFING ERECTION JIB OFFSET ANGLE

(UNIT :DEGREES)

Boom Length	Jib Length							
	79 ft	98 ft	118 ft	138 ft	157 ft	177 ft	197 ft	217 ft
98 ft	40 ~ 120	40 ~ 120	40 ~ 110	40 ~ 100	40 ~ 100	40 ~ 90	40 ~ 90	40 ~ 90
118 ft	×	40 ~ 120	40 ~ 120	40 ~ 110	40 ~ 100	40 ~ 100	40 ~ 90	40 ~ 90
138 ft	×	40 ~ 120	40 ~ 120	40 ~ 120	40 ~ 110	40 ~ 110	40 ~ 100	40 ~ 100
157 ft	×	40 ~ 120	40 ~ 120	40 ~ 120	40 ~ 120	40 ~ 110	40 ~ 110	40 ~ 100
177 ft	×	40 ~ 120	40 ~ 120	40 ~ 120	40 ~ 120	40 ~ 120	40 ~ 110	40 ~ 110
197 ft	×	×	40 ~ 120	40 ~ 120	40 ~ 120	40 ~ 120	40 ~ 120	40 ~ 110
217 ft	×	×	40 ~ 120	40 ~ 120	40 ~ 120	40 ~ 120	40 ~ 120	40 ~ 120
236 ft	×	×	40 ~ 120	40 ~ 120	40 ~ 120	40 ~ 120	40 ~ 120	40 ~ 120
256 ft	×	×	40 ~ 120	40 ~ 120	40 ~ 120	40 ~ 120	40 ~ 120	40 ~ 120
276ft	×	×	40 ~ 120	40 ~ 120	40 ~ 120	40 ~ 120	×	×

× : ALL LUFFING JIB COMBINATIONS WHICH IS NONE.

* : STD AND HL LUFFING JIB COMBINATIONS - WHEN ERECTING AND LOWERING THE BOOM, IT SHOULD BE ERECTED OVER THE FRONT OF THE CRAWLERS, AND THE BLOCKS FOR ERECTION MUST BE PLACED AT THE TIP(FRONT) OF THE CRAWLERS.

LUFFING JIB SUPPLEMENTAL DATA

13. Inner holding type

*Make the jib length shorter than the boom length for the inner holding type.

STD LUFFING JIB INSIDE HOLDING

(UNIT :DEGREES)

Boom Length	Jib Length							
	79 ft	98 ft	118 ft	138 ft	157 ft	177 ft	197 ft	217 ft
79 ft	×	×	×	×	×	×	×	×
98 ft	○	×	×	×	×	×	×	×
118 ft	×	○	×	×	×	×	×	×
138 ft	×	○	○	×	×	×	×	×
157 ft	×	○	○	○	×	×	×	×
177 ft	×	○	○	○	○	×	×	×
197 ft	×	×	○	○	○	○	×	×
217 ft	×	×	○	○	○	*○	*○	×
236 ft	×	×	*○	*○	*○	*○	×	×

HL LUFFING JIB INSIDE HOLDING

Boom Length	Jib Length							
	79 ft	98 ft	118 ft	138 ft	157 ft	177 ft	197 ft	217 ft
98 ft	○	×	×	×	×	×	×	×
118 ft	×	○	×	×	×	×	×	×
138 ft	×	○	○	×	×	×	×	×
157 ft	×	○	○	○	×	×	×	×
177 ft	×	○	○	○	○	×	×	×
197 ft	×	×	○	○	○	○	×	×
217 ft	×	×	○	○	○	○	○	×
236 ft	×	×	○	○	○	○	*○	*○
256 ft	×	×	*○	*○	*○	*○	×	×

SHL LUFFING JIB INSIDE HOLDING

(UNIT :DEGREES)

Boom Length	Jib Length							
	79 ft	98 ft	118 ft	138 ft	157 ft	177 ft	197 ft	217 ft
98 ft	○	×	×	×	×	×	×	×
118 ft	×	○	×	×	×	×	×	×
138 ft	×	○	○	×	×	×	×	×
157 ft	×	○	○	○	×	×	×	×
177 ft	×	○	○	○	○	×	×	×
197 ft	×	×	○	○	○	○	×	×
217 ft	×	×	○	○	○	○	○	×
236 ft	×	×	○	○	○	○	○	○
256 ft	×	×	○	○	○	○	○	○
276ft	×	×	○	○	○	○	×	×

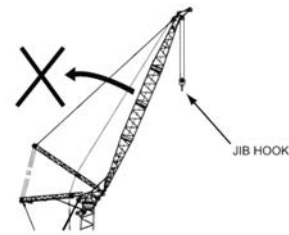
※ : STD AND HL LUFFING JIB COMBINATIONS - WHEN ERECTING AND LOWERING THE BOOM, IT SHOULD BE ERECTED OVER THE FRONT OF THE CRAWLERS, AND THE BLOCKS FOR ERECTION MUST BE PLACED AT THE TIP(FRONT) OF THE CRAWLERS.

CONFIGURATION

SL4500R

14. Hook block and number of reeving parts of line restriction

- (1) The self-weight of luffing jib point hook block must be heavier than or equal to the table below.
- (2) Total number of reeving parts of line on luffing jib point hook block must be larger than or equal to the table below.



Danger!

Follow the both (1) and (2) above at the same time for the luffing jib operation.

Otherwise luffing jib may tip over the backwards due to lack of weight on front side of boom.

Failure to observe this precaution may lead to the jib tipping backwards and resulted to machine collapsing.

SL4500 minimum hook block self-weight and minimum number of reeving parts of line on hook block

Boom Length	Jib Length	79 ft (24 m)	98 ft (30 m)	118 ft (36 m)	138 ft (42 m)	157 ft (48 m)	177 ft (54 m)	197 ft (60 m)	217 ft (66 m)
79 ft (24m)	Hook Block Self-Weight (lbs)	6,900	6,900	4,500	4,500	4,500	4,500	4,500	4,500
	No. of Parts Line	2	2	2	2	2	2	2	2
98 ft (30m)	Hook Block Self-Weight (lbs)	7,800	6,900	4,500	4,500	4,500	4,500	4,500	4,500
	No. of Parts Line	3	3	2	2	2	2	2	2
118 ft (36m)	Hook Block Self-Weight (lbs)	/	6,900	4,500	4,500	4,500	4,500	4,500	4,500
	No. of Parts Line	/	2	2	2	2	2	2	2
138 ft (42m)	Hook Block Self-Weight (lbs)	/	6,900	4,500	4,500	4,500	4,500	4,500	4,500
	No. of Parts Line	/	2	2	2	2	2	2	2
157 ft (48m)	Hook Block Self-Weight (lbs)	/	6,900	4,500	4,500	4,500	4,500	4,500	4,500
	No. of Parts Line	/	4	2	2	2	2	2	2
177 ft (54m)	Hook Block Self-Weight (lbs)	/	6,900	4,500	4,500	4,500	4,500	4,500	4,500
	No. of Parts Line	/	2	2	2	2	2	2	2
197 ft (60m)	Hook Block Self-Weight (lbs)	/	/	6,900	4,500	4,500	4,500	4,500	4,500
	No. of Parts Line	/	/	2	2	2	2	2	2
217 ft (66m)	Hook Block Self-Weight (lbs)	/	/	6,900	4,500	4,500	4,500	4,500	4,500
	No. of Parts Line	/	/	2	2	2	2	2	2
236 ft (72m)	Hook Block Self-Weight (lbs)	/	/	6,900	4,500	4,500	4,500	4,500	4,500
	No. of Parts Line	/	/	2	2	2	2	2	2
256 ft (78m)	Hook Block Self-Weight (lbs)	/	/	6,900	4,500	4,500	4,500	4,500	4,500
	No. of Parts Line	/	/	2	2	2	2	2	2
276 ft (84m)	Hook Block Self-Weight (lbs)	/	/	6,900	4,500	4,500	4,500	/	/
	No. of Parts Line	/	/	3	2	2	2	/	/

15. Lifting capacities listed apply only to the machine as originally manufactured and designed by KOBELCO CRANES CO.,LTD.

Modifications to this machine or use of equipment other than that specified can reduce operating capacity.

16. Designed and rated to comply with ASME Code B30.5.

Operation of this equipment in excess of rated loads or disregard of instruction voids the warranty.



LIFTING CAPACITIES

Luffing Boom Lifting Capacities

Unit: lbs

Counterweight: 352,700 lbs, Carbody weight: 112,400 lbs, Crawler weight: 44,100 lbs

79' Boom			98' Boom			118' Boom			138' Boom		
Load Radius (ft)	Boom Angle (deg.)	360° Rated Load (lbs)	Load Radius (ft)	Boom Angle (deg.)	360° Rated Load (lbs)	Load Radius (ft)	Boom Angle (deg.)	360° Rated Load (lbs)	Load Radius (ft)	Boom Angle (deg.)	360° Rated Load (lbs)
18.0	84.0	881,800 *	20.0	84.0	831,100 *	22.3	83.9	823,100 *	24.3	84.0	737,400 *
22.0	81.1	814,000 *	22.0	82.9	802,400 *	24.0	83.1	751,800 *	26.0	83.3	675,900 *
24.0	79.6	753,400 *	24.0	81.7	752,600 *	26.0	82.1	677,900 *	28.0	82.4	619,800 *
26.0	78.1	679,600 *	26.0	80.5	678,700 *	28.0	81.1	621,400 *	30.0	81.6	568,200 *
28.0	76.6	623,000 *	28.0	79.3	622,100 *	30.0	80.1	569,700 *	32.0	80.7	525,100 *
30.0	75.1	571,300 *	30.0	78.1	570,400 *	32.0	79.1	526,600 *	34.0	79.9	490,700 *
32.0	73.5	528,200 *	32.0	76.9	527,500 *	34.0	78.1	492,200 *	36.0	79.0	458,600 *
34.0	72.0	493,800 *	34.0	75.7	493,100 *	36.0	77.1	460,100 *	38.0	78.2	428,100 *
36.0	70.4	461,700 *	36.0	74.5	461,000 *	38.0	76.1	429,600 *	40.0	77.3	402,200 *
38.0	68.8	431,200 *	38.0	73.3	430,500 *	40.0	75.1	403,800 *	45.0	75.2	349,600 *
40.0	67.2	405,300 *	40.0	72.0	404,700 *	45.0	72.6	351,100 *	50.0	73.0	309,200 *
45.0	63.1	352,700 *	45.0	68.9	352,000 *	50.0	70.0	310,700 *	55.0	70.8	274,200 *
50.0	58.8	312,200 *	50.0	65.7	311,400 *	55.0	67.3	275,900 *	60.0	68.5	243,400 *
55.0	54.2	277,800 *	55.0	62.3	276,800 *	60.0	64.6	245,400 *	65.0	66.2	216,300 *
60.0	49.4	247,800 *	60.0	58.9	246,700 *	65.0	61.9	218,300 *	70.0	63.9	194,700 *
65.0	44.1	221,100 *	65.0	55.3	219,800 *	70.0	59.0	197,000 *	75.0	61.5	176,100 *
70.0	38.2	199,800 *	70.0	51.6	198,500 *	75.0	56.1	178,500 *	80.0	59.1	160,200 *
75.0	31.2	182,000 *	75.0	47.6	180,100 *	80.0	53.0	162,600 *	85.0	56.6	146,600 *
76.0	30.0	180,500 *	80.0	43.3	164,300 *	85.0	49.8	149,000 *	90.0	54.0	135,100 *
			85.0	38.6	150,800 *	90.0	46.4	137,700 *	95.0	51.3	124,900 *
			90.0	33.3	139,600 *	95.0	42.8	127,600 *	100.0	48.5	115,800 *
			93.0	30.0	134,900 *	100.0	38.9	118,600 *	110.0	42.5	100,800 *
						110.0	30.0	104,900 *	120.0	35.6	88,800 *
									127.0	30.0	82,600 *
157' Boom			177' Boom			197' Boom			217' Boom		
Load Radius (ft)	Boom Angle (deg.)	360° Rated Load (lbs)	Load Radius (ft)	Boom Angle (deg.)	360° Rated Load (lbs)	Load Radius (ft)	Boom Angle (deg.)	360° Rated Load (lbs)	Load Radius (ft)	Boom Angle (deg.)	360° Rated Load (lbs)
26.2	84.0	646,600 *	28.2	84.0	550,000 *	30.5	84.0	495,300 *	32.5	84.0	443,500 *
28.0	83.4	607,800 *	30.0	83.5	541,300 *	32.0	83.5	487,600 *	34.0	83.6	430,700 *
30.0	82.6	566,900 *	32.0	82.8	515,200 *	34.0	82.9	470,000 *	36.0	83.1	413,000 *
32.0	81.9	523,800 *	34.0	82.1	487,600 *	36.0	82.4	443,800 *	38.0	82.5	396,600 *
34.0	81.2	489,400 *	36.0	81.5	455,600 *	38.0	81.8	419,100 *	40.0	82.0	381,300 *
36.0	80.4	457,300 *	38.0	80.8	425,100 *	40.0	81.2	397,200 *	45.0	80.6	336,500 *
38.0	79.7	426,800 *	40.0	80.2	399,200 *	45.0	79.7	344,900 *	50.0	79.3	300,700 *
40.0	78.9	400,900 *	45.0	78.5	346,500 *	50.0	78.2	304,600 *	55.0	77.9	266,700 *
45.0	77.1	348,300 *	50.0	76.9	306,100 *	55.0	76.7	268,800 *	60.0	76.6	234,100 *
50.0	75.2	307,800 *	55.0	75.2	270,700 *	60.0	75.2	236,600 *	65.0	75.2	206,700 *
55.0	73.3	272,600 *	60.0	73.5	239,000 *	65.0	73.7	209,400 *	70.0	73.8	185,000 *
60.0	71.3	241,200 *	65.0	71.8	211,800 *	70.0	72.1	187,700 *	75.0	72.4	166,300 *
65.0	69.4	214,200 *	70.0	70.1	190,100 *	75.0	70.6	169,000 *	80.0	71.0	150,000 *
70.0	67.4	192,500 *	75.0	68.3	171,400 *	80.0	69.0	152,900 *	85.0	69.6	136,300 *
75.0	65.4	173,900 *	80.0	66.5	155,300 *	85.0	67.4	138,900 *	90.0	68.2	124,700 *
80.0	63.3	157,900 *	85.0	64.7	141,600 *	90.0	65.8	127,500 *	95.0	66.7	114,300 *
85.0	61.3	144,200 *	90.0	62.9	130,100 *	95.0	64.2	117,100 *	100.0	65.3	105,000 *
90.0	59.1	132,700 *	95.0	61.1	119,800 *	100.0	62.6	107,900 *	110.0	62.3	89,500 *
95.0	56.9	122,500 *	100.0	59.2	110,600 *	110.0	59.2	92,600 *	120.0	59.2	77,100 *
100.0	54.7	113,400 *	110.0	55.3	95,200 *	120.0	55.7	80,200 *	130.0	56.0	67,000 *
110.0	50.0	98,200 *	120.0	51.1	83,000 *	130.0	52.0	70,000 *	140.0	52.7	58,600 *
120.0	44.9	86,000 *	130.0	46.7	72,800 *	140.0	48.2	61,800 *	150.0	49.3	51,200 *
130.0	39.3	76,100 *	140.0	42.0	64,800 *	150.0	44.0	54,800 *	160.0	45.6	44,800 *
140.0	32.9	68,400 *	150.0	36.7	58,000 *	160.0	39.5	48,900 *	170.0	41.7	39,300 *
144.0	30.0	65,900 *	160.0	30.7	52,200 *	170.0	34.5	43,700 *	180.0	37.4	34,800 *
			161.0	30.0	52,000 *	178.0	30.0	40,500 *	190.0	32.7	31,000 *
									195.0	30.0	29,500 *



HYDRAULIC CRAWLER CRANE SL4500B

Luffing Boom Lifting Capacities

Unit: lbs

Counterweight: 352,700 lbs, Carbody weight: 112,400 lbs, Crawler weight: 44,100 lbs

236' Boom			256' Boom								
Load Radius (ft)	Boom Angle (deg.)	360° Rated Load (lbs)	Load Radius (ft)	Boom Angle (deg.)	360° Rated Load (lbs)						
34.4	84.0	377,800 *	36.4	84.0	319,000 *						
36.0	83.6	372,600 *	38.0	83.7	315,100 *						
38.0	83.1	367,500 *	40.0	83.2	312,200 *						
40.0	82.7	360,700 *	45.0	82.1	303,900 *						
45.0	81.4	323,000	50.0	81.0	278,900						
50.0	80.2	290,100	55.0	79.8	252,000						
55.0	79.0	259,800	60.0	78.7	227,400						
60.0	77.7	231,500	65.0	77.5	201,300						
65.0	76.5	204,300	70.0	76.4	179,600						
70.0	75.2	182,500	75.0	75.2	160,900						
75.0	73.9	163,600	80.0	74.0	144,700						
80.0	72.7	147,400	85.0	72.9	130,800						
85.0	71.4	133,700	90.0	71.7	119,200						
90.0	70.1	122,000	95.0	70.5	108,700						
95.0	68.8	111,600	100.0	69.3	99,300						
100.0	67.5	102,200	110.0	66.9	83,800						
110.0	64.8	86,800	120.0	64.4	71,100						
120.0	62.1	74,200	130.0	61.9	60,800						
130.0	59.2	63,900	140.0	59.3	51,800						
140.0	56.3	55,400	150.0	56.6	43,900						
150.0	53.3	47,800	160.0	53.8	37,100						
160.0	50.2	41,100	170.0	51.0	31,200						
170.0	46.9	35,400	180.0	48.0	26,500						
180.0	43.4	30,600	190.0	44.8	22,300						
190.0	39.7	26,600	200.0	41.5	18,700						
200.0	35.6	23,200	210.0	37.9	15,500						
210.0	31.0	20,300	220.0	34.0	13,200						
212.0	30.0	20,000	229.0	30.1	11,400						

Note: Loads enclosed in bold lines in the table require double-drum specifications. Refer to supplemental data P14.



LIFTING CAPACITIES

Long Boom Lifting Capacities

Unit: lbs

Counterweight: 352,700 lbs, Carbody weight: 112,400 lbs, Crawler weight: 44,100 lbs

197' Boom			217' Boom			236' Boom			256' Boom		
Load Radius (ft)	Boom Angle (deg.)	360° Rated Load (lbs)	Load Radius (ft)	Boom Angle (deg.)	360° Rated Load (lbs)	Load Radius (ft)	Boom Angle (deg.)	360° Rated Load (lbs)	Load Radius (ft)	Boom Angle (deg.)	360° Rated Load (lbs)
27.9	84.0	250,200 *	29.9	84.0	250,200 *	31.8	84.0	219,100 *	34.1	84.0	219,100 *
28.0	83.9	250,200 *	30.0	84.0	250,200 *	32.0	84.0	219,100 *	36.0	83.5	218,000 *
30.0	83.4	250,200 *	32.0	83.4	250,200 *	34.0	83.5	219,100 *	38.0	83.1	216,800 *
32.0	82.8	250,200 *	34.0	82.9	247,500 *	36.0	83.0	219,100 *	40.0	82.6	214,000 *
34.0	82.2	249,100 *	36.0	82.4	243,000 *	38.0	82.5	219,100 *	45.0	81.5	198,000 *
36.0	81.6	247,300 *	38.0	81.8	238,500 *	40.0	82.0	217,600 *	50.0	80.4	183,700 *
38.0	81.0	245,600 *	40.0	81.3	233,300 *	45.0	80.8	206,100 *	55.0	79.2	168,800 *
40.0	80.4	242,200 *	45.0	79.9	215,300 *	50.0	79.6	191,700 *	60.0	78.1	153,200 *
45.0	78.9	224,300 *	50.0	78.6	199,500 *	55.0	78.3	175,900 *	65.0	76.9	139,100 *
50.0	77.4	208,100 *	55.0	77.2	183,300 *	60.0	77.1	159,800 *	70.0	75.8	126,800 *
55.0	75.9	191,400 *	60.0	75.9	166,600 *	65.0	75.8	145,100 *	75.0	74.6	116,100 *
60.0	74.4	174,300 *	65.0	74.5	151,600 *	70.0	74.6	132,600 *	80.0	73.5	106,800 *
65.0	72.9	158,500 *	70.0	73.1	138,700 *	75.0	73.3	121,700 *	85.0	72.3	98,200 *
70.0	71.4	145,500 *	75.0	71.7	127,500 *	80.0	72.0	112,000 *	90.0	71.1	91,200 *
75.0	69.8	133,800 *	80.0	70.3	117,700 *	85.0	70.7	103,300 *	95.0	69.9	84,700 *
80.0	68.3	123,600 *	85.0	68.9	108,600 *	90.0	69.5	95,700 *	100.0	68.7	78,600 *
85.0	66.7	115,500 *	90.0	67.5	100,800 *	95.0	68.1	89,000 *	110.0	66.3	68,100 *
90.0	65.1	107,100 *	95.0	66.0	94,000 *	100.0	66.8	83,100 *	120.0	63.8	59,800 *
95.0	63.4	99,500 *	100.0	64.6	87,800 *	110.0	64.2	71,900 *	130.0	61.3	52,300 *
100.0	61.8	92,700 *	110.0	61.6	76,300 *	120.0	61.4	62,500 *	140.0	58.7	45,600 *
110.0	58.4	81,100 *	120.0	58.5	66,700 *	130.0	58.6	54,700 *	150.0	56.0	39,700 *
120.0	54.9	71,400 *	130.0	55.3	58,600 *	140.0	55.7	48,100 *	160.0	53.2	34,600 *
130.0	51.2	63,000 *	140.0	52.0	51,700 *	150.0	52.7	42,100 *	170.0	50.4	30,300 *
140.0	47.4	55,800 *	150.0	48.6	45,500 *	160.0	49.6	36,800 *	180.0	47.4	26,400 *
150.0	43.2	49,400 *	160.0	44.9	40,100 *	170.0	46.3	32,200 *	190.0	44.2	22,700 *
160.0	38.8	43,900 *	170.0	41.0	35,400 *	180.0	42.8	28,100 *	200.0	40.9	19,600 *
170.0	33.8	38,900 *	180.0	36.7	31,300 *	190.0	39.0	24,800 *	210.0	37.3	16,500 *
177.0	30.0	35,700 *	190.0	32.0	27,500 *	200.0	34.9	21,600 *	220.0	33.4	13,700 *
			194.0	30.0	26,400 *	210.0	30.4	18,500 *	228.0	30.0	11,900 *
						211.0	30.0	18,200 *			

Note: Loads enclosed in bold lines in the table require double-drum specifications. Refer to supplemental data P14.



SL4500R

Long Boom Lifting Capacities

Counterweight: 352,700 lbs, Carbody weight: 112,400 lbs, Crawler weight: 44,100 lbs

276' Boom			295' Boom			315' Boom					
Load Radius (ft)	Boom Angle (deg.)	360° Rated Load (lbs)	Load Radius (ft)	Boom Angle (deg.)	360° Rated Load (lbs)	Load Radius (ft)	Boom Angle (deg.)	360° Rated Load (lbs)			
36.1	84.0	187,800 *	38.1	84.0	167,300 *	40.0	84.0	116,800 *			
38.0	83.6	187,800 *	40.0	83.6	165,700 *	45.0	83.1	114,000 *			
40.0	83.2	187,700 *	45.0	82.6	161,800 *	50.0	82.2	111,200 *			
45.0	82.1	187,400 *	50.0	81.7	158,100 *	55.0	81.3	108,400 *			
50.0	81.1	176,800 *	55.0	80.7	151,100 *	60.0	80.3	105,700 *			
55.0	80.0	162,900 *	60.0	79.7	140,300 *	65.0	79.4	103,200 *			
60.0	79.0	148,300 *	65.0	78.7	127,200 *	70.0	78.5	100,700 *			
65.0	77.9	134,600 *	70.0	77.7	116,500 *	75.0	77.6	97,000 *			
70.0	76.8	123,100 *	75.0	76.7	106,800 *	80.0	76.6	91,800 *			
75.0	75.7	112,700 *	80.0	75.7	97,900 *	85.0	75.7	85,200 *			
80.0	74.7	103,300 *	85.0	74.7	90,000 *	90.0	74.7	79,000 *			
85.0	73.6	94,900 *	90.0	73.7	83,600 *	95.0	73.8	73,200 *			
90.0	72.5	88,100 *	95.0	72.7	77,600 *	100.0	72.9	68,100 *			
95.0	71.4	81,700 *	100.0	71.7	72,000 *	110.0	70.9	59,400 *			
100.0	70.3	75,900 *	110.0	69.6	62,100 *	120.0	69.0	51,900 *			
110.0	68.1	65,500 *	120.0	67.5	54,600 *	130.0	67.0	45,100 *			
120.0	65.8	57,500 *	130.0	65.4	47,800 *	140.0	65.0	38,900 *			
130.0	63.5	50,200 *	140.0	63.2	41,600 *	150.0	63.0	33,600 *			
140.0	61.1	43,500 *	150.0	61.0	35,900 *	160.0	60.9	29,500 *			
150.0	58.7	37,600 *	160.0	58.8	31,200 *	170.0	58.8	25,500 *			
160.0	56.2	32,700 *	170.0	56.5	27,200 *	180.0	56.7	21,700 *			
170.0	53.7	28,500 *	180.0	54.1	23,700 *	190.0	54.4	18,300 *			
180.0	51.1	24,800 *	190.0	51.7	20,200 *	200.0	52.2	15,500 *			
190.0	48.3	21,300 *	200.0	49.1	17,200 *	210.0	49.8	12,900 *			
200.0	45.4	18,200 *	210.0	46.5	14,400 *	220.0	47.4	10,400 *			
210.0	42.4	15,300 *	220.0	43.7	11,800 *	230.0	44.9	8,200 *			
220.0	39.2	12,700 *	230.0	40.8	9,500 *						
230.0	35.8	10,300 *	240.0	37.7	7,300 *						
240.0	32.0	8,100 *	243.0	36.8	6,800 *						
245.0	30.0	7,000 *									

Note: Refer to supplemental data P14.



LIFTING CAPACITIES

Luffing Jib Lifting Capacities

Unit: lbs

Counterweight: 352,700 lbs, Carbody weight: 112,400 lbs, Crawler weight: 44,100 lbs

79' Boom											
Load Radius (ft)	79' Jib		98' Jib		118' Jib		177' Jib		217' Jib		Load Radius (ft)
	Boom Angle (deg.)		Boom Angle (deg.)		Boom Angle (deg.)		Boom Angle (deg.)		Boom Angle (deg.)		
	86	76	86	76	86	76	86	76	86	76	
52.5	250,200 *		250,200 *								52.5
55	244,000		243,300		225,900 *						55
60	230,000		228,300		204,700 *						60
65	208,300		206,900		187,200						65
70	190,600		189,300		172,000						70
75	175,300	165,600	174,000		158,600						75
80	161,900	153,000	160,600		147,000		153,600				80
85	150,300	141,900	149,000		137,300		143,800				85
90	137,200	132,600	139,300	130,800	128,500		134,100		117,800 *		90
95		124,200	130,500	122,400	120,700	120,100	125,200		113,500 *		95
100			122,600	115,000	107,400	112,800	117,300		109,200		100
110			109,400	102,400	96,700	100,200	103,900		100,100		110
120				92,100		90,000	92,900		89,900		120
130						81,400	83,500	76,900	80,600		130
140							75,600	69,300	72,500	66,000	140
150							68,900	63,100	65,800	59,600	150
160							63,300	57,800	60,000	54,300	160
170							58,100	53,100	54,900	49,600	170
180							53,600 *	48,900	50,300 *	45,400	180
190							50,100 *	45,300	46,100 *	41,700	190
200								42,200	41,800 *	38,400	200
210									38,000 *	35,400	210
220										32,900	220

98' Boom											
Load Radius (ft)	79' Jib		98' Jib		118' Jib		177' Jib		217' Jib		Load Radius (ft)
	Boom Angle (deg.)		Boom Angle (deg.)		Boom Angle (deg.)		Boom Angle (deg.)		Boom Angle (deg.)		
	86	76	86	76	86	76	86	76	86	76	
55	242,700		242,000								55
60	226,500		224,800		222,600 *						60
65	205,200		203,600		201,400 *						65
70	187,700		186,300		184,100						70
75	172,500		171,200		169,000						75
80	159,300	147,600	158,000		155,800		151,300				80
85	147,900	137,100	146,600		144,600		141,400				85
90	138,100	127,900	136,900	125,900	134,900		131,700				90
95		119,700	128,200	117,800	126,200		122,900		114,200 *		95
100		112,400	120,400	110,700	118,500	108,200	115,100		109,500		100
110		99,800	107,200	98,400	105,200	96,000	101,900		98,400		110
120				88,400	94,600	86,100	91,000		88,100		120
130						77,700	81,800	73,300	78,900		130
140						70,500	73,900	66,000	71,000	62,500	140
150						64,600	67,400	59,800	64,300	56,500	150
160							61,700	54,700	58,600	51,400	160
170							56,800	50,100	53,600	46,700	170
180							52,400 *	46,100	49,100 *	42,600	180
190							48,600 *	42,600	45,300 *	39,100	190
200								39,600	41,900 *	35,900	200
210									38,200 *	33,000	210
220										30,500	220
230										28,300	230
240										26,300	240

Note: Refer to supplemental data P15, P16, P17 and P18.



SL4500R

Luffing Jib Lifting Capacities

Unit: lbs

Counterweight: 352,700 lbs, Carbody weight: 112,400 lbs, Crawler weight: 44,100 lbs

118' Boom

Load Radius (ft)	98' Jib		118' Jib		157' Jib		177' Jib		217' Jib		Load Radius (ft)
	Boom Angle (deg.)		Boom Angle (deg.)		Boom Angle (deg.)		Boom Angle (deg.)		Boom Angle (deg.)		
	86	76	86	76	86	76	86	76	86	76	
60	221,300		215,700								60
65	200,300		197,700								65
70	183,100		180,900								70
75	168,200		166,100		163,300						75
80	155,200		153,200		151,000		148,300				80
85	143,900		141,900		139,700		138,800				85
90	134,400		132,400		130,100		129,200				90
95	125,700	112,800	123,800		121,400		120,600		114,800		95
100	118,000	105,900	116,100	103,500	113,800		112,900		109,900		100
110	104,900	93,900	103,100	91,500	100,700		99,700		96,800		110
120		84,400	92,600	82,000	90,200		89,100		86,100		120
130		76,300		73,900	81,200	70,800	80,100	69,400	77,000		130
140				67,000	73,500	63,900	72,400	62,400	69,300		140
150				61,300	66,900	58,000	65,800	56,500	62,700		150
160					61,400	53,100	60,200	51,500	57,100		160
170						48,700	55,300	47,200	52,100	43,600	170
180						44,900	51,100	43,300	47,800	39,700	180
190						41,500	47,200	40,000	43,900	36,200	190
200								36,900	40,600	33,300	200
210									37,500 *	30,600	210
220									34,800 *	28,100	220
230										25,900	230
240										24,100	240

138' Boom

Load Radius (ft)	98' Jib		118' Jib		157' Jib		177' Jib		217' Jib		Load Radius (ft)
	Boom Angle (deg.)		118' Jib		Boom Angle (deg.)		Boom Angle (deg.)		Boom Angle (deg.)		
	86	76	86	76	86	76	86	76	86	76	
60	215,600										60
65	196,900										65
70	180,200		179,100		160,400						70
75	165,400		164,300		160,400						75
80	152,600		151,400		148,300		145,500				80
85	141,500		140,200		137,100		136,300				85
90	132,000		130,700		127,600		126,900				90
95	123,400		122,200		119,100		118,300		113,500		95
100	115,900	101,100	114,800		111,700		110,800		107,900		100
110	102,900	89,700	101,800		98,700		97,700		94,800		110
120		80,400	91,300		88,200		87,300		84,200		120
130		72,500		70,700	79,300	66,800	78,300		75,300		130
140				78,600	71,700	60,200	70,600	58,900	67,700		140
150				58,400	65,400	54,500	64,200	53,200	61,200		150
160					60,000	49,700	58,800	48,400	55,700	44,800	160
170						45,500	53,900	44,200	50,800	40,600	170
180						41,800	48,800	40,400	46,500	36,900	180
190						38,600	42,200	37,100	42,600	33,600	190
200								34,200	39,400	30,700	200
210								31,700	36,400	28,100	210
220									33,700 *	25,600	220
230										23,500	230
240										21,600	240
250										20,000	250

Note: Refer to supplemental data P15, P16, P17 and P18.



LIFTING CAPACITIES

Luffing Jib Lifting Capacities

Unit: lbs

Counterweight: 352,700 lbs, Carbody weight: 112,400 lbs, Crawler weight: 44,100 lbs

157' Boom											
Load Radius (ft)	98' Jib		118' Jib		157' Jib		177' Jib		217' Jib		Load Radius (ft)
	Boom Angle (deg.)		Boom Angle (deg.)		Boom Angle (deg.)		Boom Angle (deg.)		Boom Angle (deg.)		
	86	76	86	76	86	76	86	76	86	76	
60	215,300										60
65	195,100										65
70	178,300		176,100								70
75	163,800		162,800								75
80	151,000		149,900		147,100		142,900				80
85	139,900		138,800		136,000		133,900				85
90	130,600		129,500		126,600		124,600				90
95	122,100		121,100		118,100		116,200		111,300		95
100	114,600	97,200	113,700		110,600		108,800		105,900		100
110	101,800	86,100	100,700		97,800		95,900		93,000		110
120		77,100	90,300	75,400	87,500		85,500		82,600		120
130		69,500	81,500	67,800	78,600		76,700		73,800		130
140				61,300	71,100	57,400	69,100	55,200	66,200		140
150				55,800	64,700	52,000	62,700	49,800	59,800		150
160				51,200	59,200	47,400	57,400	45,200	54,400		160
170						43,400	52,700	41,200	49,500	37,700	170
180						39,800	48,500	37,600	45,200	34,100	180
190						36,600	44,800	34,400	41,500	30,900	190
200						33,900		31,700	38,300	28,000	200
210								29,300	35,300	25,500	210
220									32,600 *	23,300	220
230										21,300	230
240										19,400	240
250										17,800	250

177' Boom											
Load Radius (ft)	98' Jib		118' Jib		157' Jib		177' Jib		217' Jib		Load Radius (ft)
	Boom Angle (deg.)		Boom Angle (deg.)		Boom Angle (deg.)		Boom Angle (deg.)		Boom Angle (deg.)		
	86	76	86	76	86	76	86	76	86	76	
70	175,000		174,200								70
75	161,200		160,200								75
80	148,700		147,600		140,400						80
85	137,700		136,600		131,700						85
90	128,400		127,300		122,400		122,400				90
95	120,000		118,900		114,000		114,000		109,100		95
100	112,600		111,500		106,700		106,700		104,000		100
110	99,800		98,900		94,100		94,100		91,200		110
120		73,000	88,700		83,900		83,900		80,900		120
130		65,700	80,000	63,900	75,100		75,100		72,100		130
140		59,400		57,700	67,600	53,500	67,600		64,700		140
150		54,200		52,500	61,400	46,500	61,400		58,300		150
160				48,000	56,100	42,000	56,100	42,000	53,000		160
170					52,000	38,100	51,400	38,100	48,300	34,400	170
180						34,600	47,200	34,600	44,100	31,100	180
190						31,600	43,500	31,600	40,400	28,000	190
200						29,000		29,000	37,200	25,300	200
210								26,700	34,200 *	23,000	210
220									31,500 *	20,900	220
230										18,900	230
240										17,200	240
250										15,600	250

Note: Refer to supplemental data P15, P16, P17 and P18.



SL4500R

Luffing Jib Lifting Capacities

Unit: lbs

Counterweight: 352,700 lbs, Carbody weight: 112,400 lbs, Crawler weight: 44,100 lbs

197' Boom

Load Radius (ft)	118' Jib		138' Jib		157' Jib		177' Jib		217' Jib		Load Radius (ft)
	Boom Angle (deg.)		Boom Angle (deg.)		Boom Angle (deg.)		Boom Angle (deg.)		Boom Angle (deg.)		
	86	76	86	76	86	76	86	76	86	76	
70	156,500 *										70
75	152,700 *		152,500 *								75
80	144,900 *		144,500 *		139,800 *						80
85	134,200 *		133,500 *		131,200 *						85
90	125,000 *		124,400 *		122,200 *		120,100 *				90
95	116,800 *		116,100 *		113,900 *		113,300 *				95
100	109,500 *		108,900		106,700		106,000		99,700		100
110	96,900 *		96,300		94,100		93,400		90,300		110
120	86,900		86,100		84,000		83,200		80,600		120
130	78,300 *	59,700	77,400		75,400		74,500		71,900		130
140		53,700	70,000	52,400	68,000	49,800	67,100		64,500		140
150		48,700	63,800	47,400	61,800	44,900	60,900		58,100		150
160		44,600		43,100	56,500	40,700	55,600	39,300	52,800		160
170				39,400	51,900	37,000	50,900	35,600	48,100	32,100	170
180				36,200		33,700	46,700	32,400	43,900	28,900	180
190				33,300		30,700	43,000	29,600	40,200	26,000	190
200						28,300		27,000	37,000 *	23,500	200
210								24,700	34,000 *	21,200	210
220								22,700	28,400 *	19,200	220
230										17,300	230
240										15,600	240
250										14,100	250
260										12,700	260

217' Boom

Load Radius (ft)	118' Jib		138' Jib		157' Jib		177' Jib		217' Jib		Load Radius (ft)
	Boom Angle (deg.)		Boom Angle (deg.)		Boom Angle (deg.)		Boom Angle (deg.)		Boom Angle (deg.)		
	86	76	86	76	86	76	86	76	86	76	
70	156,300 *										70
75	150,600 *		149,400 *								75
80	140,700 *		139,900 *		125,200 *						80
85	131,700 *		131,000 *		125,200 *						85
90	122,800 *		122,100 *		119,000 *		116,900 *				90
95	114,600 *		113,900 *		111,700 *		111,100 *				95
100	107,400 *		106,700 *		104,500 *		103,800 *		89,200 *		100
110	95,100 *		94,200 *		92,200 *		91,600 *		84,800 *		110
120	85,100 *		84,200 *		82,200 *		81,400 *		77,800 *		120
130	76,600 *	55,500	75,700 *		73,700 *		72,900 *		70,200 *		130
140		49,800	68,500 *	48,300	66,500 *		65,600 *		63,000 *		140
150		44,900	62,200 *	43,600	60,300 *		59,400 *		56,700 *		150
160		41,000		39,700	55,100 *	37,000	54,200 *	35,700	51,400 *		160
170		37,500		36,100	50,600 *	33,500	49,600 *	32,200	46,700 *		170
180				32,900		30,400	45,500 *	29,200	42,600 *	25,600	180
190				30,200		27,600	41,900 *	26,500	39,100 *	22,700	190
200						25,400		24,100	35,900 *	20,400	200
210						23,300		21,900	33,000 *	18,200	210
220								19,900	29,500 *	16,300	220
230										14,700	230
240										13,000	240
250										11,500	250

Note: Refer to supplemental data P15, P16, P17 and P18.



LIFTING CAPACITIES

Luffing Jib Lifting Capacities

Unit: lbs

Counterweight: 352,700 lbs, Carbody weight: 112,400 lbs, Crawler weight: 44,100 lbs

236' Boom

Load Radius (ft)	118' Jib		138' Jib		157' Jib						Load Radius (ft)
	Boom Angle (deg.)		Boom Angle (deg.)		Boom Angle (deg.)						
	86	76	86	76	86	76					
75	122,600 *		121,400 *								75
80	114,700 *		113,700 *		111,700 *						80
85	107,300 *		106,400 *		105,300 *						85
90	100,900 *		100,000 *		99,000 *						90
95	94,900 *		94,100 *		93,300 *						95
100	89,500 *		88,800 *		88,000 *						100
110	79,900 *		79,300 *		78,800 *						110
120	71,600 *		71,200 *		70,900 *						120
130	64,200 *		64,200 *		64,100 *						130
140		46,600	58,000 *	45,200	58,100 *						140
150		42,000	52,300 *	40,700	52,700 *						150
160		38,100		36,900	48,100 *	34,300					160
170		34,700		33,500	43,600 *	31,000					170
180				30,500		28,100					180
190				27,800		25,400					190
200				25,600		23,200					200
210						21,200					210
220											220

Note: Refer to supplemental data P15, P16, P17 and P18.

CONFIGURATION

SL4500B

LIFTING CAPACITIES

Luffing Jib Lifting Capacities

Unit: lbs

Counterweight: 374,800 lbs, Carbody weight: 112,400 lbs, Crawler weight: 44,100 lbs

236' Boom

Load Radius (ft)	177' Jib										Load Radius (ft)
	Boom Angle (deg.)										
	86	76									
75											75
80											80
85											85
90	97,500 *										90
95	92,000 *										95
100	86,900 *										100
110	77,700 *										110
120	70,000 *										120
130	63,200 *										130
140	57,200 *										140
150	52,000 *										150
160	47,400 *										160
170	43,200 *	29,800									170
180	39,300 *	26,800									180
190	35,800 *	24,300									190
200		21,900									200
210		19,900									210
220		18,100									220

Note: Refer to supplemental data P15, P16, P17 and P18.

HEAVY LIFT SUPER HEAVY LIFT

BOOM AND JIB ARRANGEMENTS

Luffing Boom Arrangements for Crane

Boom length ft (m)	Boom arrangement
98 (30)	
118 (36)	※
138 (42)	※
157 (48)	※
177 (54)	※
197 (60)	※
217 (66)	※
236 (72)	※
256 (78)	※
276 (84)	※

Symbol	Boom Length	Remarks
	29.5 ft (9.0 m)	Boom Base
	25.6 ft (7.8 m)	Tapered Boom
	19.7 ft (6.0 m)	Insert Boom
	39.4 ft (12.0 m)	Insert Boom
	3.9 ft (1.2 m)	Boom Top

※ indicates the most flexible combination of insert luffing booms, which can be modified to form all shorter luffing boom arrangements.

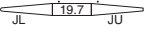
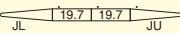
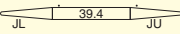
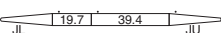
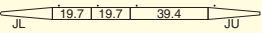
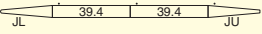
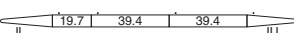
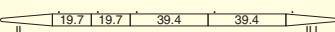
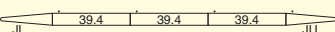
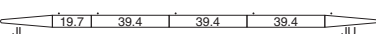
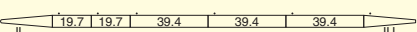
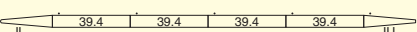
Luffing Boom Arrangements for Luffing

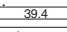
Boom length ft (m)	Boom arrangement
98 (30)	
118 (36)	※
138 (42)	※
157 (48)	※
177 (54)	※
197 (60)	※
217 (66)	※
236 (72)	※
256 (78)	※
276 (84)	※

Symbol	Boom Length	Remarks
	29.5 ft (9.0 m)	Boom Base
	25.6 ft (7.8 m)	Tapered Boom
	19.7 ft (6.0 m)	Insert Boom
	39.4 ft (12.0 m)	Insert Boom
	3.9 ft (1.2 m)	Boom Top

※ indicates the most flexible combination of insert luffing booms, which can be modified to form all shorter luffing boom arrangements.

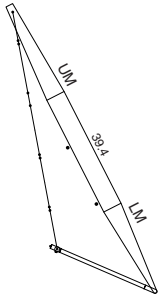
Luffing Jib Arrangements


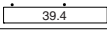

Boom length ft (m)	Jib arrangement
79 (24)	
98 (30)	※  
118 (36)	※ 
138 (42)	※  
157 (48)	※ 
177 (54)	※  
197 (60)	※ 
217 (66)	※  

Symbol	Jib Length	Remarks
	29.5 ft (9.0 m)	Jib Base
	19.7 ft (6.0 m)	Luffing Insert Jib
	39.4 ft (12.0 m)	Luffing Insert Jib
	29.5 ft (9.0 m)	Jib Top

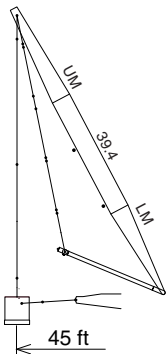
※ indicates the most flexible combination of insert luffing jibs, which can be modified to form all shorter luffing jib arrangements.


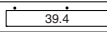
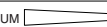
HL MAST



Symbol	Mast Length	Remarks
	29.5 ft (9.0 m)	HL Mast Base
	39.4 ft (12.0 m)	HL Insert Mast
	29.5 ft (9.0 m)	HL Mast Top

SHL MAST

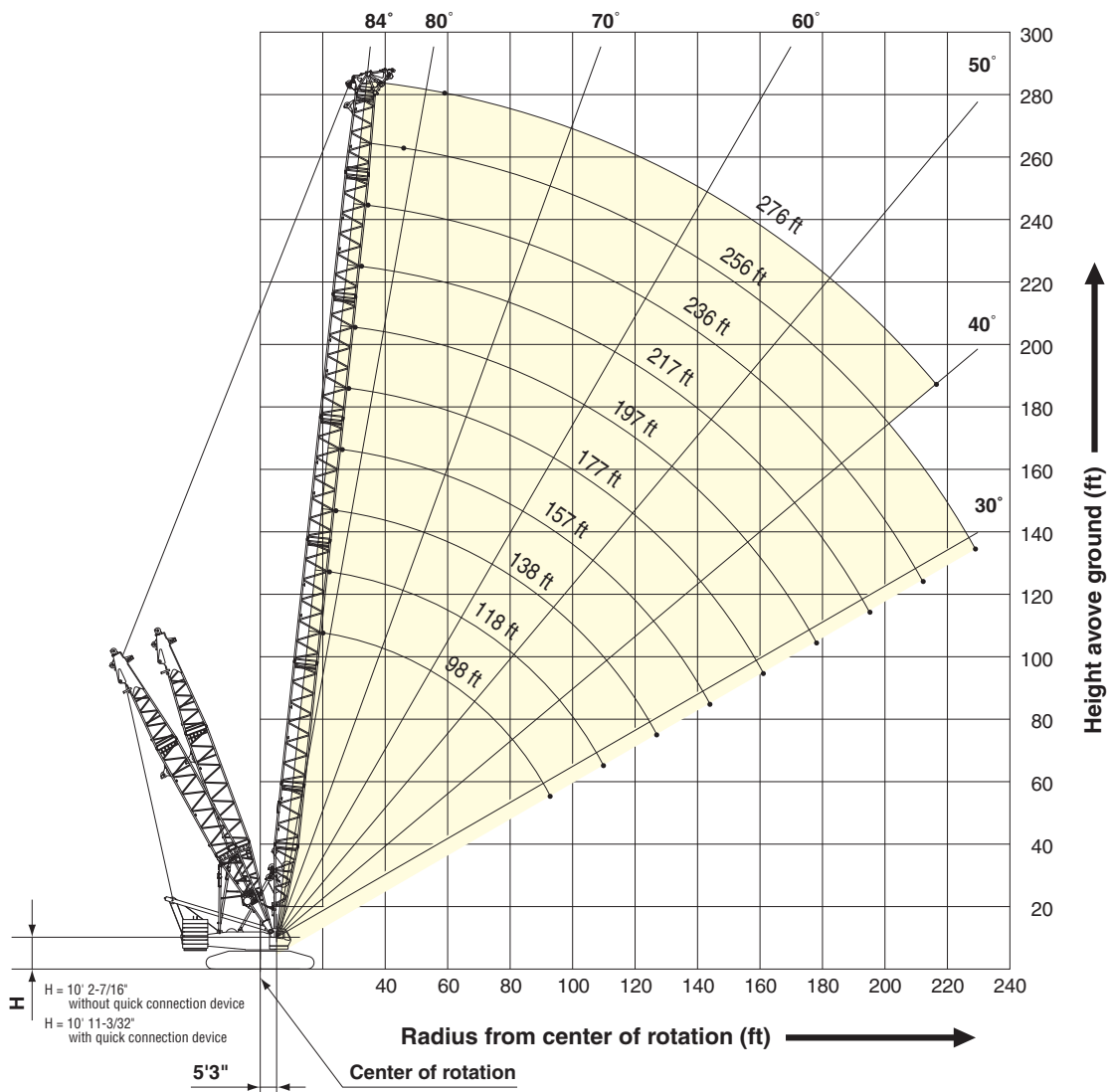


Symbol	Mast Length	Remarks
	29.5 ft (9.0 m)	HL Mast Base
	39.4 ft (12.0 m)	HL Insert Mast
	29.5 ft (9.0 m)	HL Mast Top

HEAVY LIFT

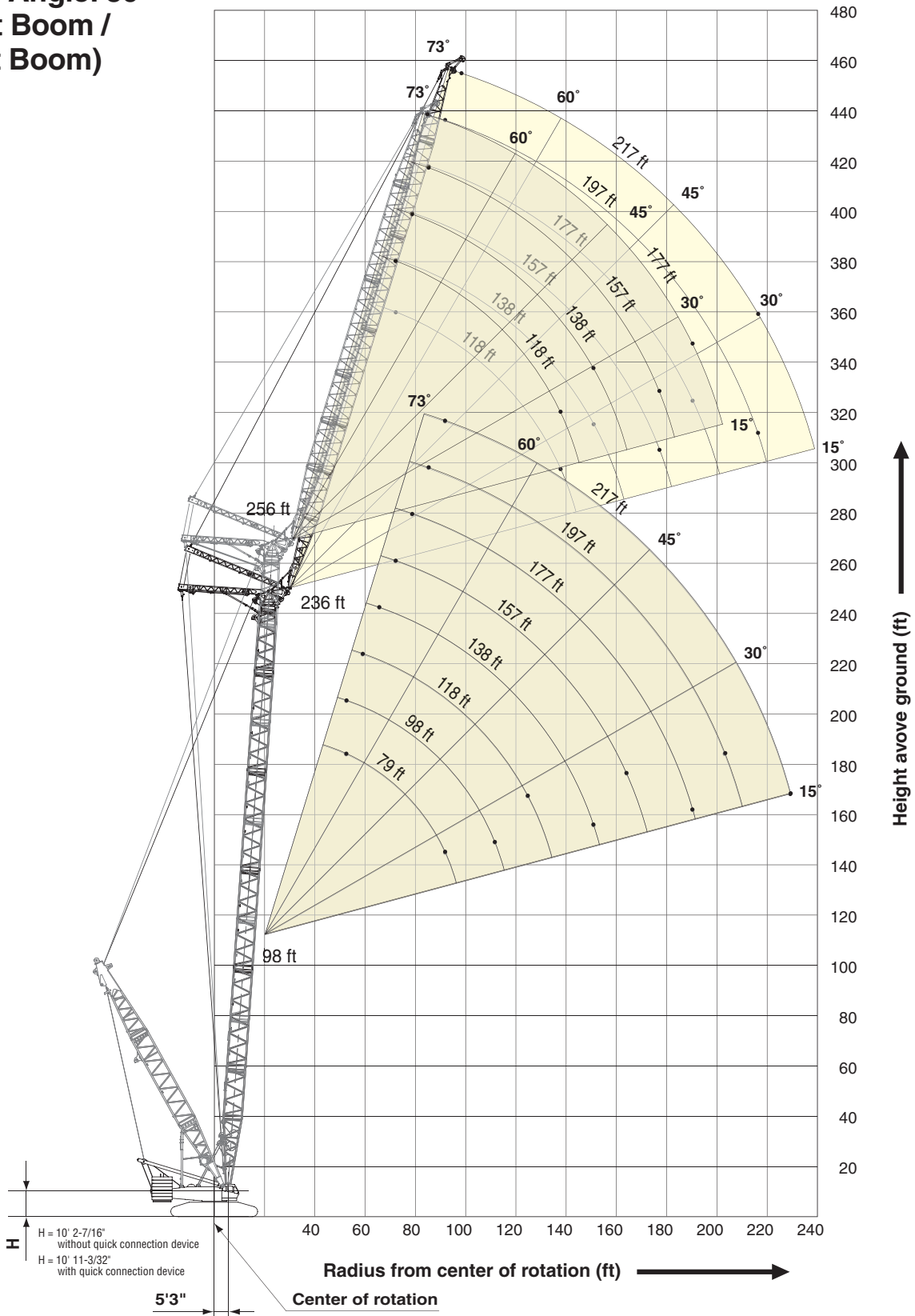
WORKING RANGES

Luffing Boom



Luffing Jib

Boom Angle: 86°
 (236 ft Boom /
 256 ft Boom)

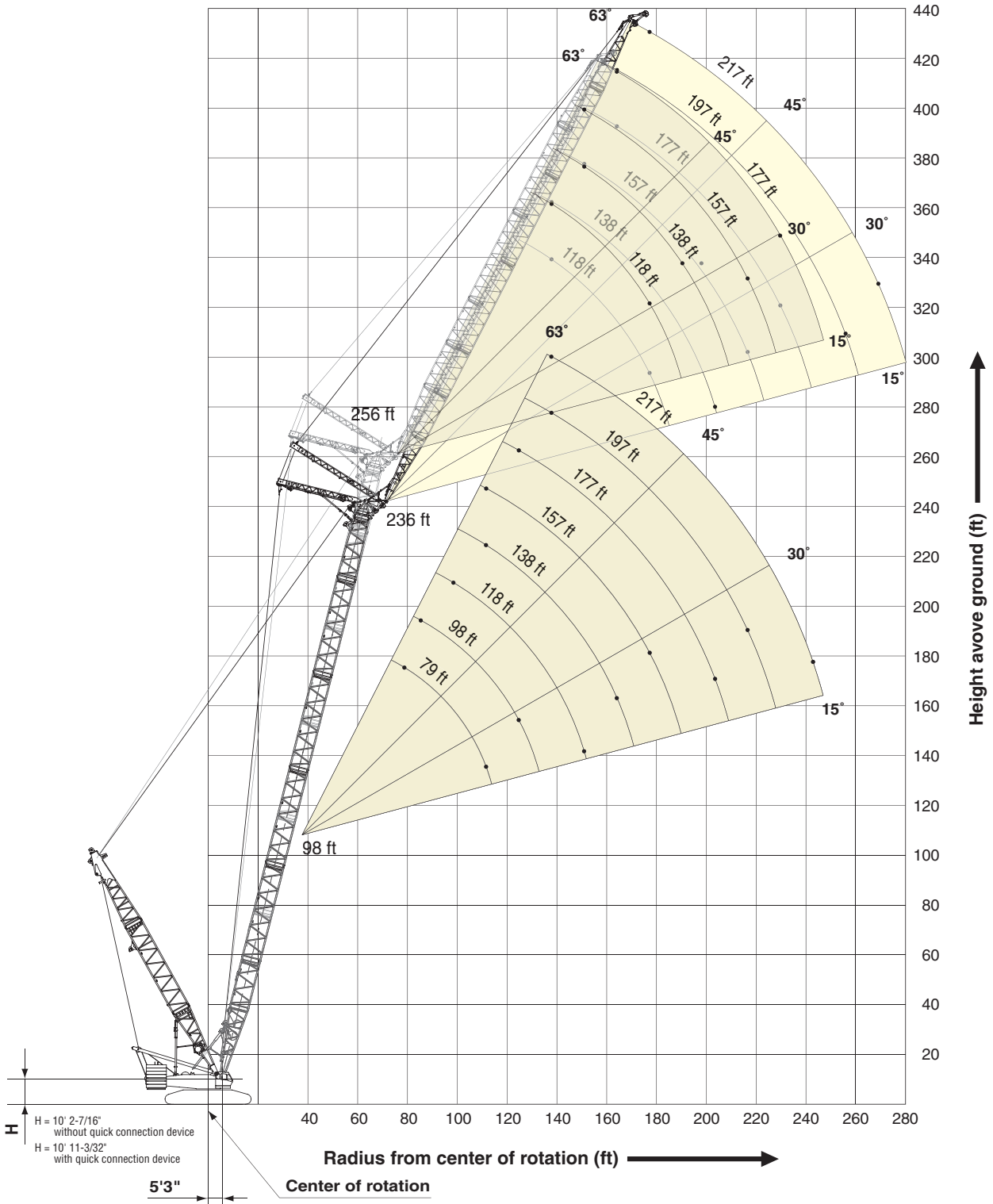


HEAVY LIFT

WORKING RANGES

Luffing Jib

Boom Angle: 76°
 (236 ft Boom /
 256 ft Boom)





LIFTING CAPACITIES

Luffing Boom Lifting Capacities

Counterweight: 352,700 lbs, Carbody weight: 112,400 lbs, Crawler weight: 44,100 lbs

98' Boom			118' Boom			138' Boom			157' Boom		
Load Radius (ft)	Boom Angle (deg.)	360° Rated Load (lbs)	Load Radius (ft)	Boom Angle (deg.)	360° Rated Load (lbs)	Load Radius (ft)	Boom Angle (deg.)	360° Rated Load (lbs)	Load Radius (ft)	Boom Angle (deg.)	360° Rated Load (lbs)
20.0	84.0	771,600 *	22.3	83.9	771,600 *	24.3	84.0	771,600 *	26.2	84.0	679,000 *
22.0	82.9	767,700 *	24.0	83.1	743,500 *	26.0	83.3	693,600 *	28.0	83.4	629,900
24.0	81.7	743,800 *	26.0	82.1	696,200 *	28.0	82.4	633,400	30.0	82.6	575,600
26.0	80.5	697,200 *	28.0	81.1	637,700	30.0	81.6	575,600	32.0	81.9	512,800
28.0	79.3	618,000	30.0	80.1	576,700	32.0	80.7	513,200	34.0	81.2	465,300
30.0	78.1	544,700	32.0	79.1	514,200	34.0	79.9	465,800	36.0	80.4	424,800
32.0	76.9	506,100	34.0	78.1	466,900	36.0	79.0	425,300	38.0	79.7	385,800
34.0	75.7	468,500	36.0	77.1	426,400	38.0	78.2	386,200	40.0	78.9	353,100
36.0	74.5	428,200	38.0	76.1	387,400	40.0	77.3	353,500	45.0	77.1	294,000
38.0	73.3	389,300	40.0	75.1	354,900	45.0	75.2	294,600	50.0	75.2	251,200
40.0	72.0	356,900	45.0	72.6	296,100	50.0	73.0	252,000	55.0	73.3	217,400
45.0	68.9	298,100	50.0	70.0	253,700	55.0	70.8	218,300	60.0	71.3	190,500
50.0	65.7	255,800	55.0	67.3	220,100	60.0	68.5	191,600	65.0	69.4	169,300
55.0	62.3	222,400	60.0	64.6	193,400	65.0	66.2	170,400	70.0	67.4	152,300
60.0	58.9	195,800	65.0	61.9	172,200	70.0	63.9	153,500	75.0	65.4	137,800
65.0	55.3	174,600	70.0	59.0	155,500	75.0	61.5	139,100	80.0	63.3	125,300
70.0	51.6	157,900	75.0	56.1	141,000	80.0	59.1	126,600	85.0	61.3	114,400
75.0	47.6	143,600	80.0	53.0	128,600	85.0	56.6	115,900	90.0	59.1	105,400
80.0	43.3	131,300	85.0	49.8	118,100	90.0	54.0	106,900	95.0	56.9	97,400
85.0	38.6	120,700	90.0	46.4	109,100	95.0	51.3	98,900	100.0	54.7	90,400
90.0	33.3	113,200	95.0	42.8	101,200	100.0	48.5	91,900	110.0	50.0	78,300
93.0	30.0	109,500	100.0	38.9	94,400	110.0	42.5	80,200	120.0	44.9	69,000
			110.0	30.0	83,000	120.0	35.6	71,100	130.0	39.3	61,100
						127.0	30.0	66,300	140.0	32.9	54,500
									144.0	30.0	52,900

Note: Loads enclosed in bold lines in the table require double-drum specifications. Refer to supplemental data P14.



SL4500R

Luffing Boom Lifting Capacities

Unit: lbs

Counterweight: 352,700 lbs, Carbody weight: 112,400 lbs, Crawler weight: 44,100 lbs

177' Boom			197' Boom			217' Boom			236' Boom		
Load Radius (ft)	Boom Angle (deg.)	360° Rated Load (lbs)	Load Radius (ft)	Boom Angle (deg.)	360° Rated Load (lbs)	Load Radius (ft)	Boom Angle (deg.)	360° Rated Load (lbs)	Load Radius (ft)	Boom Angle (deg.)	360° Rated Load (lbs)
28.2	84.0	617,200 *	30.5	84.0	550,000 *	32.5	84.0	493,800 *	34.4	84.0	432,000 *
30.0	83.5	574,800 *	32.0	83.5	508,300 *	34.0	83.6	463,000	36.0	83.6	406,900 *
32.0	82.8	511,900	34.0	82.9	463,800	36.0	83.1	422,300	38.0	83.1	376,500 *
34.0	82.1	464,400	36.0	82.4	423,100	38.0	82.5	383,100	40.0	82.7	349,600
36.0	81.5	423,800	38.0	81.8	383,900	40.0	82.0	350,200	45.0	81.4	289,900
38.0	80.8	384,700	40.0	81.2	351,100	45.0	80.6	290,800	50.0	80.2	246,900
40.0	80.2	352,000	45.0	79.7	291,700	50.0	79.3	247,800	55.0	79.0	212,900
45.0	78.5	292,700	50.0	78.2	248,800	55.0	77.9	213,800	60.0	77.7	185,800
50.0	76.9	249,900	55.0	76.7	214,900	60.0	76.6	186,700	65.0	76.5	164,300
55.0	75.2	216,100	60.0	75.2	187,900	65.0	75.2	165,400	70.0	75.2	147,100
60.0	73.5	189,200	65.0	73.7	166,500	70.0	73.8	148,200	75.0	73.9	132,300
65.0	71.8	167,800	70.0	72.1	149,500	75.0	72.4	133,500	80.0	72.7	119,600
70.0	70.1	150,800	75.0	70.6	134,800	80.0	71.0	120,900	85.0	71.4	108,600
75.0	68.3	136,100	80.0	69.0	122,200	85.0	69.6	110,000	90.0	70.1	99,500
80.0	66.5	123,500	85.0	67.4	111,300	90.0	68.2	100,900	95.0	68.8	91,400
85.0	64.7	112,800	90.0	65.8	102,200	95.0	66.7	92,700	100.0	67.5	84,200
90.0	62.9	103,700	95.0	64.2	94,000	100.0	65.3	85,500	110.0	64.8	71,900
95.0	61.1	95,600	100.0	62.6	86,800	110.0	62.3	73,200	120.0	62.1	62,200
100.0	59.2	88,600	110.0	59.2	74,800	120.0	59.2	63,500	130.0	59.2	53,900
110.0	55.3	76,500	120.0	55.7	65,200	130.0	56.0	55,300	140.0	56.3	46,900
120.0	51.1	66,900	130.0	52.0	57,000	140.0	52.7	48,400	150.0	53.3	41,000
130.0	46.7	58,900	140.0	48.2	50,200	150.0	49.3	42,500	160.0	50.2	35,800
140.0	42.0	52,200	150.0	44.0	44,500	160.0	45.6	37,800	170.0	46.9	31,100
150.0	36.7	46,700	160.0	39.5	39,800	170.0	41.7	33,400	180.0	43.4	27,000
160.0	30.7	42,300	170.0	34.5	35,800	180.0	37.4	29,400	190.0	39.7	23,400
161.0	30.0	42,100	178.0	30.0	33,200	190.0	32.7	25,900	200.0	35.6	20,500
						195.0	30.0	24,900	210.0	31.0	18,000
									212.0	30.0	17,600

Note: Loads enclosed in bold lines in the table require double-drum specifications. Refer to supplemental data P14.



LIFTING CAPACITIES

Luffing Boom Lifting Capacities

Counterweight: 352,700 lbs, Carbody weight: 112,400 lbs, Crawler weight: 44,100 lbs

256' Boom			276' Boom								
Load Radius (ft)	Boom Angle (deg.)	360° Rated Load (lbs)	Load Radius (ft)	Boom Angle (deg.)	360° Rated Load (lbs)						
45.9	81.9	279,100	59.1	79.7	186,000						
50.0	81.0	245,300	60.0	79.5	181,000						
55.0	79.8	211,100	65.0	78.4	159,500						
60.0	78.7	183,900	70.0	77.4	142,500						
65.0	77.5	162,400	75.0	76.3	127,700						
70.0	76.4	145,200	80.0	75.2	114,900						
75.0	75.2	130,400	85.0	74.1	103,900						
80.0	74.0	117,800	90.0	73.0	94,800						
85.0	72.9	106,700	95.0	72.0	86,500						
90.0	71.7	97,600	100.0	70.8	79,300						
95.0	70.5	89,400	110.0	68.6	66,900						
100.0	69.3	82,200	120.0	66.4	57,100						
110.0	66.9	69,800	130.0	64.0	48,800						
120.0	64.4	60,000	140.0	61.7	41,500						
130.0	61.9	51,700	150.0	59.3	35,000						
140.0	59.3	44,600	160.0	56.8	29,600						
150.0	56.6	38,400	170.0	54.2	24,900						
160.0	53.8	33,200	180.0	51.6	20,800						
170.0	51.0	28,500	190.0	48.9	17,100						
180.0	48.0	24,300	200.0	46.0	13,900						
190.0	44.8	20,600	210.0	43.0	11,100						
200.0	41.5	17,600	217.0	40.9	9,400						
210.0	37.9	14,800									
220.0	34.0	12,400									
229.0	30.1	10,800									



LIFTING CAPACITIES

Luffing Jib Lifting Capacities

Unit: lbs

Counterweight: 352,700 lbs, Carbody weight: 112,400 lbs, Crawler weight: 44,100 lbs

98' Boom											
Load Radius (ft)	79' Jib		98' Jib		118' Jib		177' Jib		217' Jib		Load Radius (ft)
	Boom Angle (deg.)		Boom Angle (deg.)		Boom Angle (deg.)		Boom Angle (deg.)		Boom Angle (deg.)		
	86	76	86	76	86	76	86	76	86	76	
52.5	250,200 *		250,200 *								52.5
55	248,200 *		245,400 *								55
60	242,100 *		235,000 *		228,500 *						60
65	226,500 *		221,400 *		215,000 *						65
70	212,100 *		206,500 *		201,600 *						70
75	198,300 *		192,900 *		188,300 *						75
80	184,200 *	173,600	180,800 *		175,800 *		155,600 *				80
85	168,200 *	160,400	169,500 *		164,900 *		149,600 *				85
90	154,000 *	149,100	157,500 *	148,000	155,400		142,700 *				90
95		139,100	145,700 *	138,100	145,500		134,700 *		114,200 *		95
100		130,300	134,800 *	129,500	135,800 *	127,900	126,400 *		110,000 *		100
110		115,400	116,300 *	114,700	117,600 *	113,100	112,000 *		102,100 *		110
120				102,900	103,500 *	101,300	100,400 *		91,800 *		120
130						91,400	90,100 *	88,100	81,800 *		130
140						83,100	80,800 *	80,000	72,800 *	76,300	140
150						76,000	72,400 *	72,900	65,000 *	70,400	150
160							65,300 *	67,100	58,500 *	64,600	160
170							59,200 *	61,900	52,700 *	59,400	170
180							53,900 *	57,200	47,700 *	54,800	180
190							49,900 *	53,200	43,300 *	50,800	190
200								49,700	39,400 *	47,200	200
210									36,000 *	44,000	210
220									33,100 *	41,100	220
230										38,400	230
240										34,900	240

118' Boom											
Load Radius (ft)	98' Jib		118' Jib		157' Jib		177' Jib		217' Jib		Load Radius (ft)
	Boom Angle (deg.)		Boom Angle (deg.)		Boom Angle (deg.)		Boom Angle (deg.)		Boom Angle (deg.)		
	86	76	86	76	86	76	86	76	86	76	
60	243,800 *		219,100 *								60
65	229,800 *		219,100 *								65
70	215,800 *		210,400 *								70
75	199,700 *		197,300 *		179,500 *						75
80	183,100		182,000		171,900 *		156,900 *				80
85	168,800		167,900		164,800 *		150,700 *				85
90	156,900		156,000		153,700 *		144,800 *				90
95	146,300	135,000	145,400		143,300		139,200		114,800 *		95
100	136,600	126,400	136,000	124,900	134,100		133,100		110,700 *		100
110	118,100 *	112,000	119,200	110,400	118,400		117,400		102,800 *		110
120		100,400	104,800 *	99,000	104,600		104,000		95,600 *		120
130		90,600		89,200	92,500 *	87,100	92,000 *	85,900	88,000 *		130
140				80,900	82,100 *	78,900	81,600 *	77,800	79,800 *		140
150				74,000	73,500 *	71,800	73,000 *	70,900	71,100 *		150
160					66,300 *	66,100	65,900 *	65,100	63,900 *	62,700	160
170						61,100	59,500 *	60,000	57,500 *	57,600	170
180						56,600	54,100 *	55,500	51,900 *	53,000	180
190						52,500	50,100 *	51,400	46,800 *	49,000	190
200								48,100	42,400 *	45,600	200
210									38,400 *	42,500	210
220									34,700 *	39,600	220
230										37,100	230
240										34,800	240

Note: Refer to supplemental data P15, P16, P17 and P18.



SL4500R

Luffing Jib Lifting Capacities

Unit: lbs

Counterweight: 352,700 lbs, Carbody weight: 112,400 lbs, Crawler weight: 44,100 lbs

138' Boom

Load Radius (ft)	98' Jib		118' Jib		157' Jib		177' Jib		217' Jib		Load Radius (ft)
	Boom Angle (deg.)		Boom Angle (deg.)		Boom Angle (deg.)		Boom Angle (deg.)		Boom Angle (deg.)		
	86	76	86	76	86	76	86	76	86	76	
60	248,100 *										60
65	237,000 *										65
70	217,700 *		211,600 *								70
75	199,000		198,000 *		181,000 *						75
80	182,400		181,400		173,100 *		155,500 *				80
85	168,100		167,200		164,700 *		151,800 *				85
90	156,200		155,300		153,100		145,900				90
95	145,600		144,700		142,600		139,500		115,600 *		95
100	136,200	123,400	135,500		133,500		132,400		111,300 *		100
110	119,800 *	109,300	119,900		117,700		116,800		103,300 *		110
120		97,900	106,000 *	96,200	105,200		104,300		96,100 *		120
130		88,300		86,700	93,600 *	84,500	93,000		89,200 *		130
140				78,700	82,900 *	76,500	82,600 *	75,600	82,000 *		140
150				72,000	74,200 *	69,800	73,700 *	68,700	73,100 *		150
160					66,800 *	64,100	66,400 *	63,000	65,400 *	60,100	160
170						59,100	59,900 *	58,100	58,600 *	55,700	170
180						54,600	54,300 *	53,700	52,700 *	51,300	180
190						50,800	49,500 *	49,700	47,500 *	47,200	190
200								46,500	43,100 *	43,900	200
210								43,500	39,100 *	40,800	210
220									35,300 *	38,100	220
230										35,600	230
240										33,400	240
250										31,500	250

157' Boom

Load Radius (ft)	98' Jib		118' Jib		157' Jib		177' Jib		217' Jib		Load Radius (ft)
	Boom Angle (deg.)		Boom Angle (deg.)		Boom Angle (deg.)		Boom Angle (deg.)		Boom Angle (deg.)		
	86	76	86	76	86	76	86	76	86	76	
60	219,100 *										60
65	219,100 *										65
70	211,600 *		187,800 *								70
75	198,100		186,200								75
80	181,600		180,500		156,500 *		155,800				80
85	167,500		166,400		156,500 *		152,900				85
90	155,600		154,500		150,500		147,000				90
95	145,000		144,000		141,900		139,700		116,300 *		95
100	135,700	120,500	134,800		132,600		131,700		112,000 *		100
110	119,900	106,600	119,000		117,000		116,100		103,900 *		110
120		95,400	106,500	93,700	104,500		103,600		96,600		120
130		86,000	94,800 *	84,400	93,700		93,000		89,600		130
140				76,500	83,900 *	74,300	83,500 *	72,900	82,500		140
150				69,800	74,900 *	67,600	74,400 *	66,700	73,700		150
160				64,300	67,500 *	62,100	67,000 *	61,200	66,100 *		160
170						57,200	60,500 *	56,300	59,300 *	53,700	170
180						52,900	54,700 *	52,000	53,300 *	49,300	180
190						49,000	49,700 *	48,100	47,900 *	45,500	190
200						45,800		44,700	43,400 *	42,300	200
210								41,800	39,300 *	39,300	210
220									35,700 *	36,600	220
230										34,100	230
240										32,000	240
250										30,000	250

Note: Refer to supplemental data P15, P16, P17 and P18.



LIFTING CAPACITIES

Luffing Jib Lifting Capacities

Unit: lbs

Counterweight: 352,700 lbs, Carbody weight: 112,400 lbs, Crawler weight: 44,100 lbs

177' Boom											
Load Radius (ft)	98' Jib		118' Jib		157' Jib		177' Jib		217' Jib		Load Radius (ft)
	Boom Angle (deg.)		Boom Angle (deg.)		Boom Angle (deg.)		Boom Angle (deg.)		Boom Angle (deg.)		
	86	76	86	76	86	76	86	76	86	76	
70	187,800 *		187,800 *								70
75	186,200		185,800								75
80	180,500		179,600		156,500 *						80
85	166,600		165,500		156,500 *						85
90	154,700		153,600		150,200		148,400				90
95	144,100		143,100		141,500		140,000		115,800 *		95
100	134,800		134,000		132,400		130,900		112,700 *		100
110	119,200		118,300		116,800		115,200		104,600 *		110
120		92,800	105,800		104,300		102,900		97,200		120
130		83,500	94,900	81,900	93,800		92,400		89,700		130
140		75,700		74,100	84,700	71,900	83,300		82,100		140
150		69,300		67,600	76,300	65,400	75,200		74,500		150
160				62,200	68,700 *	60,000	67,600 *	59,000	66,900 *		160
170					61,600 *	55,200	60,900 *	54,200	60,000 *	51,700	170
180						50,900	55,100 *	50,000	53,800 *	47,400	180
190						47,200	48,400	46,400	48,400 *	43,700	190
200						44,000		43,100	43,800 *	40,500	200
210								40,200	39,600 *	37,600	210
220									35,800 *	35,000	220
230										32,500	230
240										30,500	240
250										28,600	250

197' Boom												
Load Radius (ft)	118' Jib		138' Jib		157' Jib		177' Jib		217' Jib		Load Radius (ft)	
	Boom Angle (deg.)		Boom Angle (deg.)		Boom Angle (deg.)		Boom Angle (deg.)		Boom Angle (deg.)			
	86	76	86	76	86	76	86	76	86	76		
70	156,500 *										70	
75	156,500 *		156,500 *								75	
80	156,500 *		156,500 *		156,500 *						80	
85	156,500 *		156,500 *		156,500 *						85	
90	150,600		150,000		149,500		125,200 *				90	
95	142,200		141,300		140,700		125,200 *				95	
100	133,100		132,200		131,600		123,700		106,700		100	
110	117,400		116,600		116,100		114,300		104,400		110	
120	105,100		104,200		103,600		102,700		97,800		120	
130	94,600	79,100	93,800		93,100		92,200		89,700		130	
140		71,500	84,800	70,400	84,300	69,100	83,400		81,400		140	
150		65,100	76,700	64,000	76,700	62,900	76,000		73,800		150	
160		59,800		58,900	69,300 *	57,600	68,900	56,700	67,200		160	
170					54,200	62,600 *	53,000	62,400 *	52,000	60,600 *	48,500	170
180					50,100		48,900	56,400 *	47,900	54,400 *	45,400	180
190					46,600		45,300	51,000 *	44,400	48,800 *	41,700	190
200							42,200		41,200	44,100 *	38,700	200
210									38,300	40,000 *	35,900	210
220									35,800	35,700 *	33,300	220
230											31,000	230
240											29,000	240
250											27,100	250

Note: Refer to supplemental data P15, P16, P17 and P18.



SL4500R

Luffing Jib Lifting Capacities

Unit: lbs

Counterweight: 352,700 lbs, Carbody weight: 112,400 lbs, Crawler weight: 44,100 lbs

217' Boom

Load Radius (ft)	118' Jib		138' Jib		157' Jib		177' Jib		217' Jib		Load Radius (ft)
	Boom Angle (deg.)		Boom Angle (deg.)		Boom Angle (deg.)		Boom Angle (deg.)		Boom Angle (deg.)		
	86	76	86	76	86	76	86	76	86	76	
70	156,500 *										70
75	156,500 *		156,500 *								75
80	156,500 *		156,500 *		125,200 *						80
85	156,500 *		156,500 *		125,200 *						85
90	150,000 *		149,400 *		125,200 *		125,200 *				90
95	141,300 *		140,400		125,200 *		125,200 *				95
100	132,200		131,300		123,700		123,600			93,900 *	100
110	116,600		115,700		114,300		113,500			93,900 *	110
120	104,200		103,300		102,900		102,000			90,700	120
130	93,800		92,900		92,500		91,600			86,200 *	130
140		76,100		67,600	83,600		82,800			80,400	140
150		62,700		61,600	76,000		75,400			73,100	150
160		57,500		56,400	69,500	55,300	69,000	54,000		67,000	160
170		53,000		51,900	63,500 *	50,800	62,800	49,700		60,900	170
180				47,900		46,800	56,800 *	45,700		55,000 *	180
190				44,400		43,300	51,500 *	42,200		49,300 *	190
200						40,200		39,300		44,500 *	200
210						37,500		36,500		39,400 *	210
220								34,000		33,800 *	220
230											230
240										27,200	240
250										25,200	250
260										23,400	260

236' Boom

Load Radius (ft)	118' Jib		138' Jib		175' Jib		177' Jib		217' Jib		Load Radius (ft)
	Boom Angle (deg.)		Boom Angle (deg.)		Boom Angle (deg.)		Boom Angle (deg.)		Boom Angle (deg.)		
	86	76	86	76	86	76	86	76	86	76	
75	156,500 *		144,400 *								75
80	154,700 *		143,500 *		125,200 *						80
85	147,400 *		140,100 *		125,200 *						85
90	139,600 *		136,300 *		124,500 *						90
95	132,000 *		131,100 *		121,200 *		112,300 *				95
100	124,900 *		125,000 *		116,700 *		105,600 *			90,200 *	100
110	112,000 *		112,400 *		108,800 *		98,700 *			88,000 *	110
120	100,900 *		101,500 *		100,700 *		91,900 *			84,700 *	120
130	90,700 *		91,900 *		92,100 *		85,500 *			80,400 *	130
140		67,200	83,300 *	65,500	83,400 *		79,400 *			75,400 *	140
150		61,100	75,400 *	59,600	76,000 *		73,700 *			70,700 *	150
160		56,200		54,600	69,900 *	53,400	68,100 *			65,900 *	160
170		51,800		50,200	64,000 *	49,000	62,700 *	47,400		60,800 *	170
180				46,300		45,100	57,300 *	43,500		55,400 *	180
190				42,800		41,700	51,900 *	40,200		49,700 *	190
200				39,900		38,800		37,100		42,700 *	200
210						36,200		34,400		36,200 *	210
220								32,100			220
230										27,000	230
240										25,000	240
250										23,100	250
260										21,400	260

Note: Refer to supplemental data P15, P16, P17 and P18.



LIFTING CAPACITIES

Luffing Jib Lifting Capacities

Unit: lbs

Counterweight: 352,700 lbs, Carbody weight: 112,400 lbs, Crawler weight: 44,100 lbs

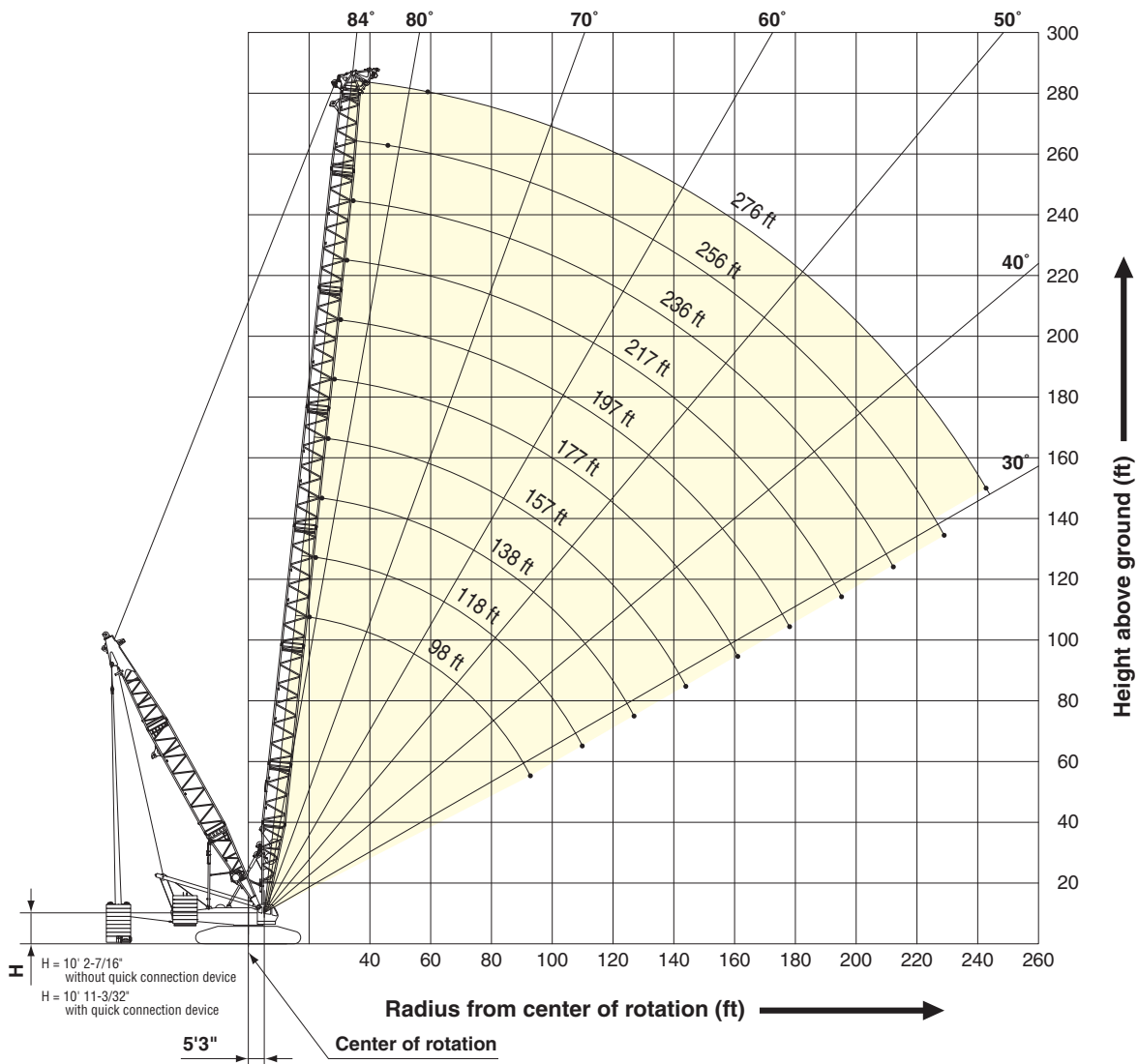
256' Boom

Load Radius (ft)	118' Jib		138' Jib		157' Jib		177' Jib				Load Radius (ft)
	Boom Angle (deg.)		Boom Angle (deg.)		Boom Angle (deg.)		Boom Angle (deg.)				
	86	76	86	76	86	76	86	76			
75	125,200 *										75
80	124,100 *		123,900 *								80
85	119,900 *		118,900 *								85
90	113,500 *		112,600 *			108,400 *		93,900 *			90
95	107,200 *		106,500 *			104,000 *		93,900 *			95
100	101,200 *		100,800 *			99,800 *		93,100 *			100
110	90,700 *		90,600 *			90,100 *		88,400 *			110
120	81,500 *		81,800 *			81,500 *		80,600 *			120
130	73,200 *		73,900 *			73,800 *		73,000 *			130
140		64,400	66,900 *			67,000 *		66,300 *			140
150		58,700	60,500 *			60,900 *		60,500 *			150
160		53,900		52,000		55,500 *	50,200	55,200 *			160
170		49,700		47,900		50,400 *	47,400	50,400 *	44,900		170
180				44,200			43,500	46,000 *	41,400		180
190				40,800			40,200	42,000 *	38,200		190
200							37,500		35,200		200
210							34,900		32,600		210
220									30,400		220

SUPER HEAVY LIFT

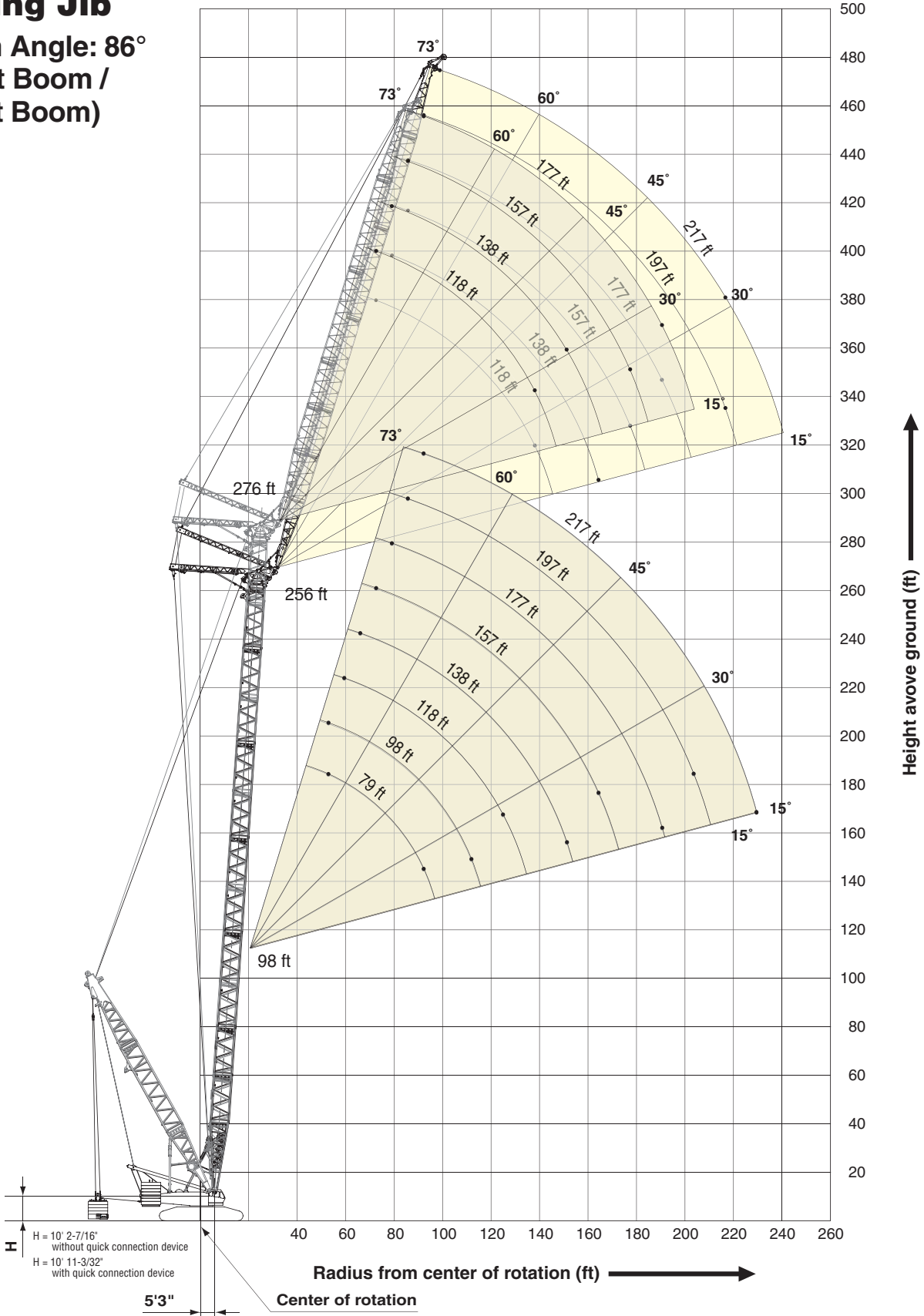
WORKING RANGES

Luffing Boom



Luffing Jib

Boom Angle: 86°
 (256 ft Boom /
 276 ft Boom)

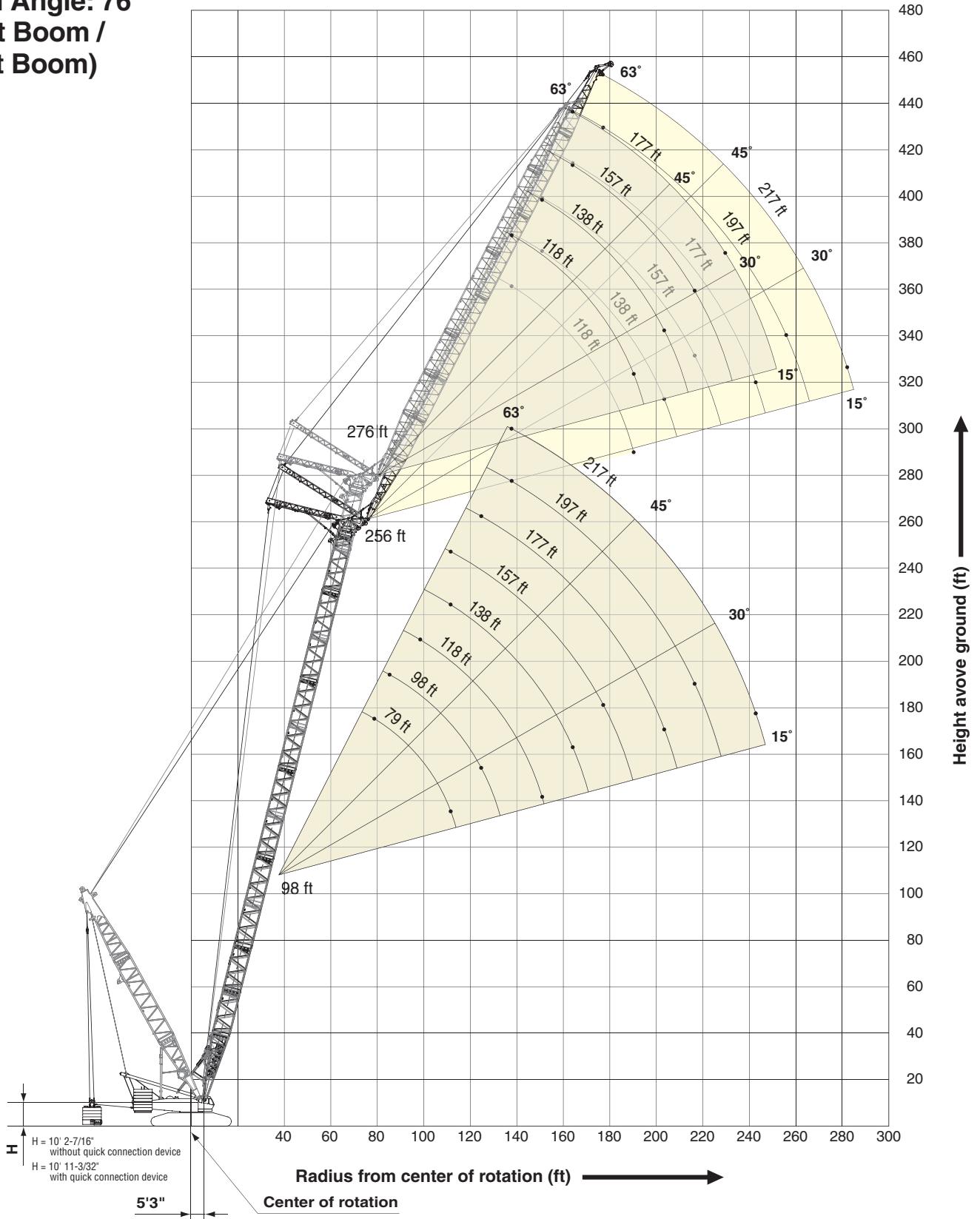


SUPER HEAVY LIFT

WORKING RANGES

Luffing Jib

Boom Angle: 76°
(256 ft Boom /
276 ft Boom)





LIFTING CAPACITIES

Luffing Boom Lifting Capacities

Counterweight: 352,700 lbs, Carbody weight: 112,400 lbs, Crawler weight: 44,100 lbs, Pallet Weights 551,100 lbs

98' Boom			118' Boom			138' Boom			157' Boom		
Load Radius (ft)	Boom Angle (deg.)	360° Rated Load (lbs)	Load Radius (ft)	Boom Angle (deg.)	360° Rated Load (lbs)	Load Radius (ft)	Boom Angle (deg.)	360° Rated Load (lbs)	Load Radius (ft)	Boom Angle (deg.)	360° Rated Load (lbs)
20.0	84.0	771,600 *	22.3	83.9	771,600 *	24.3	84.0	771,600 *	26.2	84.0	679,000 *
22.0	82.9	771,600 *	24.0	83.1	771,600 *	26.0	83.3	771,600 *	28.0	83.4	679,000 *
24.0	81.7	771,600 *	26.0	82.1	771,600 *	28.0	82.4	771,600 *	30.0	82.6	679,000 *
26.0	80.5	771,600 *	28.0	81.1	771,600 *	30.0	81.6	771,500 *	32.0	81.9	679,000 *
28.0	79.3	771,600 *	30.0	80.1	771,600 *	32.0	80.7	771,300 *	34.0	81.2	679,000 *
30.0	78.1	771,600 *	32.0	79.1	771,600 *	34.0	79.9	771,000 *	36.0	80.4	679,000 *
32.0	76.9	771,600 *	34.0	78.1	771,600 *	36.0	79.0	770,500 *	38.0	79.7	679,000 *
34.0	75.7	771,600 *	36.0	77.1	771,600 *	38.0	78.2	770,000 *	40.0	78.9	679,000 *
36.0	74.5	771,600 *	38.0	76.1	771,600 *	40.0	77.3	766,100 *	45.0	77.1	679,000 *
38.0	73.3	771,600 *	40.0	75.1	767,800 *	45.0	75.2	736,700 *	50.0	75.2	658,400 *
40.0	72.0	768,600 *	45.0	72.6	738,400 *	50.0	73.0	678,300 *	55.0	73.3	620,500 *
45.0	68.9	745,000 *	50.0	70.0	678,900 *	55.0	70.8	618,300	60.0	71.3	570,300
50.0	65.7	681,900 *	55.0	67.3	621,100	60.0	68.5	564,700	65.0	69.4	521,200
55.0	62.3	615,600 *	60.0	64.6	571,900	65.0	66.2	516,300	70.0	67.4	484,700
60.0	58.9	554,200	65.0	61.9	523,000	70.0	63.9	477,300	75.0	65.4	452,000
65.0	55.3	488,200	70.0	59.0	486,900	75.0	61.5	443,700	80.0	63.3	420,700
70.0	51.6	431,000	75.0	56.1	454,500	80.0	59.1	414,700	85.0	61.3	389,200
75.0	47.6	378,800	80.0	53.0	423,500	85.0	56.6	389,800	90.0	59.1	362,600
80.0	43.3	330,400	85.0	49.8	392,200	90.0	54.0	363,900	95.0	56.9	338,900
85.0	38.6	285,100	90.0	46.4	354,300	95.0	51.3	340,200	100.0	54.7	318,200
90.0	33.3	246,000	95.0	42.8	316,100	100.0	48.5	319,500	110.0	50.0	282,900
93.0	30.0	224,200 *	100.0	38.9	279,200	110.0	42.5	284,500	120.0	44.9	254,600
			110.0	30.0	210,700	120.0	35.6	236,000	130.0	39.3	230,800
						127.0	30.0	201,700	144.0	30.0	192,600



SL4500B

Luffing Boom Lifting Capacities

Unit: lbs

Counterweight: 352,700 lbs, Carbody weight: 112,400 lbs, Crawler weight: 44,100 lbs, Pallet Weights 551,100 lbs

177' Boom			197' Boom			217' Boom			236' Boom		
Load Radius (ft)	Boom Angle (deg.)	360° Rated Load (lbs)	Load Radius (ft)	Boom Angle (deg.)	360° Rated Load (lbs)	Load Radius (ft)	Boom Angle (deg.)	360° Rated Load (lbs)	Load Radius (ft)	Boom Angle (deg.)	360° Rated Load (lbs)
28.2	84.0	617,200 *	30.5	84.0	550,000 *	32.5	84.0	493,800 *	34.4	84.0	432,000 *
30.0	83.5	617,200 *	32.0	83.5	550,000 *	34.0	83.6	493,800 *	36.0	83.6	432,000 *
32.0	82.8	617,200 *	34.0	82.9	550,000 *	36.0	83.1	493,800 *	38.0	83.1	432,000 *
34.0	82.1	617,200 *	36.0	82.4	550,000 *	38.0	82.5	493,800 *	40.0	82.7	432,000 *
36.0	81.5	617,200 *	38.0	81.8	550,000 *	40.0	82.0	493,800 *	45.0	81.4	432,000 *
38.0	80.8	617,200 *	40.0	81.2	550,000 *	45.0	80.6	493,800 *	50.0	80.2	432,000 *
40.0	80.2	617,200 *	45.0	79.7	550,000 *	50.0	79.3	493,800 *	55.0	79.0	432,000 *
45.0	78.5	617,200 *	50.0	78.2	550,000 *	55.0	77.9	493,800 *	60.0	77.7	432,000 *
50.0	76.9	617,200 *	55.0	76.7	550,000 *	60.0	76.6	493,000 *	65.0	76.5	432,000 *
55.0	75.2	602,400 *	60.0	75.2	544,700 *	65.0	75.2	489,200 *	70.0	75.2	432,000 *
60.0	73.5	570,000 *	65.0	73.7	517,100 *	70.0	73.8	471,000 *	75.0	73.9	427,200 *
65.0	71.8	525,200 *	70.0	72.1	473,400 *	75.0	72.4	442,900	80.0	72.7	413,800 *
70.0	70.1	485,500	75.0	70.6	436,300	80.0	71.0	410,200	85.0	71.4	385,200 *
75.0	68.3	449,100	80.0	69.0	406,700	85.0	69.6	382,000	90.0	70.1	358,500
80.0	66.5	416,200	85.0	67.4	379,000	90.0	68.2	358,300	95.0	68.8	334,600
85.0	64.7	387,900	90.0	65.8	358,100	95.0	66.7	335,500	100.0	67.5	313,700
90.0	62.9	361,400	95.0	64.2	336,400	100.0	65.3	314,600	110.0	64.8	277,700
95.0	61.1	337,600	100.0	62.6	315,500	110.0	62.3	278,800	120.0	62.1	249,000
100.0	59.2	316,800	110.0	59.2	279,900	120.0	59.2	250,100	130.0	59.2	224,700
110.0	55.3	281,200	120.0	55.7	251,400	130.0	56.0	225,900	140.0	56.3	203,900
120.0	51.1	252,800	130.0	52.0	227,300	140.0	52.7	205,300	150.0	53.3	186,600
130.0	46.7	228,900	140.0	48.2	206,800	150.0	49.3	188,000	160.0	50.2	172,000
140.0	42.0	207,100	150.0	44.0	189,500	160.0	45.6	173,400	170.0	46.9	159,000
150.0	36.7	182,700	160.0	39.5	175,100	170.0	41.7	160,600	180.0	43.4	147,600
160.0	30.7	176,900	170.0	34.5	162,900	180.0	37.4	149,200	190.0	39.7	137,300
161.0	30.0	176,500	178.0	30.0	154,100	190.0	32.7	139,300	200.0	35.6	128,700
						195.0	30.0	135,300	210.0	31.0	121,200
									212.0	30.0	119,700

Note: Loads enclosed in bold lines in the table require double-drum specifications. Refer to supplemental data P14.



LIFTING CAPACITIES

Luffing Boom Lifting Capacities

Counterweight: 352,700 lbs, Carbody weight: 112,400 lbs, Crawler weight: 44,100 lbs, Pallet Weights 551,100 lbs

256' Boom			276' Boom								
Load Radius (ft)	Boom Angle (deg.)	360° Rated Load (lbs)	Load Radius (ft)	Boom Angle (deg.)	360° Rated Load (lbs)						
45.9	81.9	389,700 *	59.1	79.7	336,400 *						
50.0	81.0	389,700 *	60.0	79.5	336,400 *						
55.0	79.8	389,700 *	65.0	78.4	336,400 *						
60.0	78.7	389,700 *	70.0	77.4	336,400 *						
65.0	77.5	389,700 *	75.0	76.3	336,400 *						
70.0	76.4	389,700 *	80.0	75.2	336,400 *						
75.0	75.2	389,700 *	85.0	74.1	336,400 *						
80.0	74.0	388,200 *	90.0	73.0	336,400 *						
85.0	72.9	382,300 *	95.0	72.0	326,100 *						
90.0	71.7	357,000	100.0	70.8	309,300 *						
95.0	70.5	333,100	110.0	68.6	273,300 *						
100.0	69.3	312,200	120.0	66.4	244,500 *						
110.0	66.9	276,200	130.0	64.0	220,100						
120.0	64.4	247,300	140.0	61.7	199,300						
130.0	61.9	222,900	150.0	59.3	181,800						
140.0	59.3	202,200	160.0	56.8	167,000						
150.0	56.6	184,700	170.0	54.2	153,800						
160.0	53.8	170,000	180.0	51.6	142,300						
170.0	51.0	156,900	190.0	48.9	132,400						
180.0	48.0	145,400	200.0	46.0	123,500						
190.0	44.8	135,300	210.0	43.0	115,500						
200.0	41.5	126,500	220.0	39.8	108,300 *						
210.0	37.9	118,600	230.0	36.3	101,900 *						
220.0	34.0	111,500	240.0	32.6	96,100 *						
229.0	30.1	105,800	243.0	31.4	94,500 *						



LIFTING CAPACITIES

Luffing Jib Lifting Capacities

Unit: lbs

Counterweight: 352,700 lbs, Carbody weight: 112,400 lbs, Crawler weight: 44,100 lbs, Pallet Weights 286,600 lbs

98' Boom											
Load Radius (ft)	79' Jib		98' Jib		118' Jib		177' Jib		217' Jib		Load Radius (ft)
	Boom Angle (deg.)		Boom Angle (deg.)		Boom Angle (deg.)		Boom Angle (deg.)		Boom Angle (deg.)		
	86	76	86	76	86	76	86	76	86	76	
52.5	250,200 *		250,200 *								52.5
55	248,200 *		245,400 *								55
60	242,100 *		235,000 *		228,500 *						60
65	226,500 *		221,400 *		215,000 *						65
70	212,100 *		206,500 *		201,600 *						70
75	199,300 *		192,900 *		188,300 *						75
80	188,000 *	196,000 *	180,900 *		175,800 *		155,600 *				80
85	177,400 *	182,000 *	170,300 *		164,900 *		149,600 *				85
90	166,000 *	170,100 *	161,500 *	168,400 *	155,400 *		142,700 *				90
95		159,500 *	153,300 *	157,800 *	146,800 *		134,700 *		114,200 *		95
100		150,100	145,400 *	148,400 *	139,300 *	146,000 *	126,400 *		110,000 *		100
110		133,700	129,800 *	132,300 *	126,500 *	130,100 *	112,000 *		102,100 *		110
120			119,300 *	115,000 *	117,200 *	106,200 *	100,400 *		91,800 *		120
130						106,200 *	90,400 *	102,000 *	81,800 *		130
140						96,800 *	81,700 *	92,500 *	72,800 *	89,200 *	140
150						88,900 *	74,500 *	84,500 *	65,000 *	81,200 *	150
160							68,500 *	77,800 *	58,500 *	74,300 *	160
170							63,400 *	71,800 *	52,700 *	68,300 *	170
180							57,900 *	66,500 *	47,700 *	62,900 *	180
190							50,000 *	61,800 *	43,300 *	58,100 *	190
200								57,800 *	39,600 *	52,900 *	200
210									36,400 *	48,100 *	210
220									33,900 *	43,800 *	220
230										39,900 *	230
240										35,200 *	240

118' Boom											
Load Radius (ft)	98' Jib		118' Jib		157' Jib		177' Jib		217' Jib		Load Radius (ft)
	Boom Angle (deg.)		Boom Angle (deg.)		Boom Angle (deg.)		Boom Angle (deg.)		Boom Angle (deg.)		
	86	76	86	76	86	76	86	76	86	76	
60	243,800 *		219,100 *								60
65	229,800 *		219,100 *								65
70	217,800 *		210,400 *								70
75	203,700 *		199,100 *		179,500 *						75
80	188,400 *		186,400 *		171,900 *		156,900 *				80
85	174,900 *		172,900 *		164,800 *		150,700 *				85
90	163,500 *		161,600 *		157,800 *		144,800 *				90
95	153,200 *	154,100 *	151,200 *		149,100 *		139,200 *		114,800 *		95
100	144,100 *	145,000 *	142,100 *	142,500 *	140,100 *		133,800 *		110,700 *		100
110	128,500 *	129,200 *	126,500 *	126,700 *	124,300 *		122,700 *		102,800 *		110
120		116,300 *	114,000 *	114,100 *	111,600 *		110,600 *		95,600 *		120
130		105,500 *	103,300 *	100,900 *	100,200 *	99,800 *	99,000 *		88,900 *		130
140			94,100 *	91,700 *	91,100 *	90,500 *	89,700 *		82,000 *		140
150			86,400 *	83,800 *	83,300 *	82,300 *	82,000 *		73,300 *		150
160				77,000 *	76,700 *	74,500 *	75,300 *		66,100 *	71,800 *	160
170					70,800 *	67,400 *	69,500 *		59,600 *	66,000 *	170
180					65,700 *	64,300 *	64,300 *		53,900 *	60,800 *	180
190					61,100 *	59,600 *	59,600 *		49,000 *	56,100 *	190
200							55,700 *		44,700 *	52,000 *	200
210									40,700 *	48,400 *	210
220									36,900 *	45,000 *	220
230										41,500 *	230
240										38,000 *	240

Note: Refer to supplemental data P15, P16, P17 and P18.



SL4500R

Luffing Jib Lifting Capacities

Unit: lbs

Counterweight: 352,700 lbs, Carbody weight: 112,400 lbs, Crawler weight: 44,100 lbs, Pallet Weights 286,600 lbs

138' Boom

Load Radius (ft)	98' Jib		118' Jib		157' Jib		177' Jib		217' Jib		Load Radius (ft)
	Boom Angle (deg.)		Boom Angle (deg.)		Boom Angle (deg.)		Boom Angle (deg.)		Boom Angle (deg.)		
	86	76	86	76	86	76	86	76	86	76	
60	248,100 *										60
65	237,000 *										65
70	219,400 *		212,500 *								70
75	202,300 *		200,100 *		181,000 *						75
80	186,800 *		184,700 *		173,400 *		155,500 *				80
85	173,400 *		171,400 *		166,200 *		151,800 *				85
90	162,000 *		160,000 *		157,100 *		145,900 *				90
95	151,700 *		149,700 *		147,600 *		140,300 *		115,600 *		95
100	142,600 *	141,300 *	140,600 *		138,600 *		134,600 *		111,300 *		100
110	126,900 *	125,800 *	125,100 *		123,000 *		121,700 *		103,300 *		110
120		113,300 *	112,700 *	110,800 *	110,300 *		109,400 *		96,100 *		120
130		102,700 *		100,300 *	99,600 *	97,200 *	98,700 *		89,500 *		130
140				91,300 *	90,400 *	88,200 *	89,500 *	86,900 *	82,700 *		140
150				83,600 *	82,700 *	80,500 *	81,600 *	79,100 *	74,100 *		150
160					76,200 *	74,000 *	74,800 *	72,600 *	66,800 *	69,300 *	160
170						68,300 *	68,000 *	67,000 *	60,300 *	63,500 *	170
180						63,300 *	60,400 *	61,900 *	54,500 *	58,400 *	180
190						58,700 *	50,500 *	57,400 *	49,300 *	53,900 *	190
200								53,500 *	44,900 *	50,000 *	200
210								50,000 *	40,900 *	46,300 *	210
220									37,200 *	43,100 *	220
230										40,200 *	230
240										37,700 *	240
250										34,800 *	250

157' Boom

Load Radius (ft)	98' Jib		118' Jib		157' Jib		177' Jib		217' Jib		Load Radius (ft)
	Boom Angle (deg.)		Boom Angle (deg.)		Boom Angle (deg.)		Boom Angle (deg.)		Boom Angle (deg.)		
	86	76	86	76	86	76	86	76	86	76	
60	219,100 *										60
65	219,100 *										65
70	212,600 *		187,800 *								70
75	200,400 *		187,100 *								75
80	185,100 *		182,900 *		156,500 *		155,800 *				80
85	171,600 *		169,600 *		156,500 *		152,900 *				85
90	160,200 *		158,200 *		153,300 *		147,000 *				90
95	150,000 *		148,100 *		146,100 *		141,300 *		116,300 *		95
100	141,000 *	137,100 *	139,300 *		137,100 *		135,200 *		112,000 *		100
110	125,600 *	122,000 *	123,800 *		121,600 *		120,600 *		103,900 *		110
120		109,900 *	111,300 *	107,400 *	109,100 *		108,100 *		96,600 *		120
130		99,500 *	97,700 *	97,100 *	98,500 *		97,500 *		89,800 *		130
140				88,300 *	89,300 *	85,100 *	88,400 *	83,800 *	83,000 *		140
150				80,900 *	81,600 *	77,600 *	80,500 *	76,300 *	75,000 *		150
160				74,600 *	75,100 *	71,400 *	74,000 *	70,100 *	67,500 *		160
170						65,900 *	67,900 *	64,500 *	60,800 *	61,000 *	170
180						60,900 *	62,000 *	59,500 *	54,900 *	56,000 *	180
190						56,500 *	56,300 *	55,000 *	49,700 *	51,400 *	190
200						52,800 *		51,300 *	45,300 *	47,700 *	200
210								47,900 *	41,300 *	44,300 *	210
220									37,500 *	41,100 *	220
230										38,200 *	230
240										35,700 *	240
250										33,400 *	250

Note: Refer to supplemental data P15, P16, P17 and P18.



LIFTING CAPACITIES

Luffing Jib Lifting Capacities

Unit: lbs

Counterweight: 352,700 lbs, Carbody weight: 112,400 lbs, Crawler weight: 44,100 lbs, Pallet Weights 286,600 lbs

177' Boom											
Load Radius (ft)	98' Jib		118' Jib		157' Jib		177' Jib		217' Jib		Load Radius (ft)
	Boom Angle (deg.)		Boom Angle (deg.)		Boom Angle (deg.)		Boom Angle (deg.)		Boom Angle (deg.)		
	86	76	86	76	86	76	86	76	86	76	
70	187,800 *		187,800 *								70
75	187,200 *		186,300 *								75
80	183,100 *		181,000 *		156,500 *						80
85	169,800 *		167,800 *		156,500 *						85
90	158,600 *		156,600 *		152,200 *		148,400 *				90
95	148,500 *		146,500 *		144,500 *		141,900 *		115,800 *		95
100	139,500 *		137,500 *		135,500 *		134,900 *		112,700 *		100
110	124,200 *		122,200 *		120,100 *		119,400 *		104,600 *		110
120		106,300 *	109,900 *		107,700 *		106,900 *		97,200 *		120
130		96,200 *	97,400 *	93,700 *	97,100 *		96,300 *		90,400 *		130
140		87,600 *		85,000 *	88,000 *	81,900 *	87,100 *		83,600 *		140
150		80,200 *		77,800 *	80,500 *	74,700 *	79,400 *		75,800 *		150
160				71,800 *	74,000 *	68,500 *	72,900 *	67,200 *	68,300 *		160
170					65,200 *	63,100 *	67,200 *	61,800 *	61,500 *	58,200 *	170
180						58,300 *	62,000 *	56,900 *	55,500 *	53,400 *	180
190						54,100 *	56,800 *	52,500 *	50,100 *	49,000 *	190
200						50,400 *		49,000 *	45,600 *	45,300 *	200
210								45,700 *	41,500 *	41,900 *	210
220									37,600 *	38,900 *	220
230										36,000 *	230
240										33,700 *	240
250										31,400 *	250

197' Boom											
Load Radius (ft)	118' Jib		138' Jib		157' Jib		177' Jib		217' Jib		Load Radius (ft)
	Boom Angle (deg.)		Boom Angle (deg.)		Boom Angle (deg.)		Boom Angle (deg.)		Boom Angle (deg.)		
	86	76	86	76	86	76	86	76	86	76	
70	156,500 *										70
75	156,500 *		156,500 *								75
80	156,500 *		156,500 *		156,500 *						80
85	156,500 *		156,500 *		156,500 *						85
90	152,200 *		151,600 *		150,800 *		125,200 *				90
95	144,600 *		143,700 *		142,600 *		125,200 *				95
100	135,800 *		134,900 *		133,800 *		124,000 *		106,700 *		100
110	120,700 *		119,600 *		118,500 *		116,600 *		104,400 *		110
120	108,400 *		107,300 *		106,200 *		105,400 *		97,800 *		120
130	98,000 *		96,900 *		95,700 *		94,800 *		90,400 *		130
140		89,700 *	88,000 *	80,000 *	86,700 *	78,200 *	85,800 *		82,900 *		140
150		81,300 *	80,500 *	72,900 *	79,100 *	71,100 *	78,200 *		75,400 *		150
160		74,200 *		66,900 *	72,800 *	65,200 *	71,800 *	64,000 *	68,600 *		160
170		68,400 *		61,600 *	64,800 *	59,900 *	66,100 *	58,700 *	62,100 *	55,000 *	170
180				57,000 *		55,200 *	61,100 *	53,900 *	56,000 *	50,300 *	180
190				53,000 *		51,200 *	56,500 *	49,900 *	50,600 *	46,100 *	190
200						47,700 *		46,300 *	46,000 *	42,600 *	200
210								43,000 *	41,800 *	39,400 *	210
220								40,100 *	37,100 *	36,500 *	220
230										33,800 *	230
240										31,500 *	240
250										29,200 *	250
260										27,300 *	260

Note: Refer to supplemental data P15, P16, P17 and P18.



SL4500R

Luffing Jib Lifting Capacities

Unit: lbs

Counterweight: 352,700 lbs, Carbody weight: 112,400 lbs, Crawler weight: 44,100 lbs, Pallet Weights 286,600 lbs

217' Boom

Load Radius (ft)	118' Jib		138' Jib		157' Jib		177' Jib		217' Jib		Load Radius (ft)	
	Boom Angle (deg.)		Boom Angle (deg.)		Boom Angle (deg.)		Boom Angle (deg.)		Boom Angle (deg.)			
	86	76	86	76	86	76	86	76	86	76		
70	156,500 *										70	
75	156,500 *		156,500 *								75	
80	156,500 *		156,500 *		125,200 *						80	
85	156,500 *		156,500 *		125,200 *						85	
90	150,800 *		150,200 *		125,200 *		125,200 *				90	
95	142,700 *		141,900 *		125,200 *		125,200 *				95	
100	134,000 *		133,200 *		123,900 *		123,800 *			93,900 *	100	
110	118,900 *		118,000 *		115,800 *		115,300 *			93,900 *	110	
120	106,800 *		105,900 *		104,700 *		104,000 *			90,700 *	120	
130	96,400 *	85,600 *	95,600 *		94,200 *		93,500 *			86,200 *	130	
140		77,600 *	86,700 *	76,100 *	85,400 *		84,500 *			80,500 *	140	
150		70,700 *	79,100 *	69,400 *	77,800 *		76,900 *			74,000 *	150	
160		65,000 *		63,500 *	71,500 *	61,900 *	70,600 *	60,600 *		67,700 *	160	
170		60,100 *		58,400 *	64,500 *	56,900 *	65,000 *	55,600 *		62,000 *	170	
180				54,000 *		52,400 *	60,000 *	51,100 *		56,600 *	180	
190				50,100 *		48,300 *	55,400 *	47,000 *		51,000 *	43,300 *	190
200						45,000 *		43,500 *		46,100 *	39,900 *	200
210						41,900 *		40,400 *		40,200 *	36,800 *	210
220								37,700 *		33,800 *	33,900 *	220
230											31,400 *	230
240											29,000 *	240
250											26,900 *	250
260											25,100 *	260

236' Boom

Load Radius (ft)	118' Jib		138' Jib		157' Jib		177' Jib		217' Jib		Load Radius (ft)	
	Boom Angle (deg.)		Boom Angle (deg.)		Boom Angle (deg.)		Boom Angle (deg.)		Boom Angle (deg.)			
	86	76	86	76	86	76	86	76	86	76		
75	156,500 *		144,400 *								75	
80	154,700 *		143,500 *		125,200 *						80	
85	147,400 *		140,100 *		125,200 *						85	
90	139,600 *		136,300 *		124,500 *						90	
95	132,000 *		131,100 *		121,200 *						95	
100	124,900 *		125,000 *		116,700 *		112,300 *				100	
110	112,000 *		112,400 *		108,800 *		109,000 *			90,200 *	110	
120	100,900 *		101,500 *		100,700 *		105,600 *			88,000 *	120	
130	90,700 *		91,900 *		92,500 *		98,700 *			84,700 *	130	
140		75,400 *	83,300 *	73,000 *	84,300 *		91,900 *			80,400 *	140	
150		68,900 *	75,400 *	66,500 *	76,900 *		85,500 *			75,400 *	150	
160		63,300 *		61,000 *	70,300 *		79,400 *			70,700 *	160	
170		58,300 *		56,100 *	64,100 *	59,300 *	73,700 *			65,900 *	170	
180				51,800 *		54,300 *	68,600 *	52,100 *		60,800 *	44,000 *	180
190				47,900 *		50,000 *	58,800 *	47,800 *		55,400 *	40,200 *	190
200				44,700 *		46,100 *	54,100 *	43,900 *		49,700 *	40,200 *	200
210						42,900 *		40,600 *		42,700 *	37,000 *	210
220						40,000 *		37,500 *		36,200 *	34,000 *	220
230								34,800 *			31,300 *	230
240											28,800 *	240
250											26,600 *	250
260											24,500 *	260
											22,600 *	

Note: Refer to supplemental data P15, P16, P17 and P18.



LIFTING CAPACITIES

Luffing Jib Lifting Capacities

Unit: lbs

Counterweight: 352,700 lbs, Carbody weight: 112,400 lbs, Crawler weight: 44,100 lbs, Pallet Weights 286,600 lbs

256' Boom											
Load Radius (ft)	118' Jib		138' Jib		157' Jib		177' Jib		217' Jib		Load Radius (ft)
	Boom Angle (deg.)		Boom Angle (deg.)		Boom Angle (deg.)		Boom Angle (deg.)		Boom Angle (deg.)		
	86	76	86	76	86	76	86	76	86	76	
75	125,200 *										75
80	124,100 *		123,900 *								80
85	119,900 *		118,900 *								85
90	113,500 *		112,600 *		110,100 *		93,900 *				90
95	107,200 *		106,500 *		105,300 *		93,900 *				95
100	101,200 *		100,800 *		99,800 *		93,100 *		81,600 *		100
110	90,700 *		90,600 *		90,100 *		88,400 *		79,600 *		110
120	81,500 *		81,800 *		81,500 *		80,600 *		76,500 *		120
130	73,200 *		73,900 *		73,800 *		73,000 *		71,300 *		130
140		72,600 *	66,900 *		67,000 *		66,300 *		64,800 *		140
150		66,200 *	60,500 *		60,900 *		60,500 *		59,100 *		150
160		60,800 *	54,400 *	59,600 *	55,500 *	56,900 *	55,200 *		54,200 *		160
170		56,000 *		54,800 *	50,400 *	52,200 *	50,400 *	49,800 *	49,600 *		170
180		51,800 *		50,500 *		48,000 *	46,000 *	45,600 *	45,400 *	42,100 *	180
190		47,900 *		46,800 *		44,200 *	42,000 *	41,900 *	41,700 *	38,400 *	190
200				43,400 *		40,900 *		38,700 *	37,200 *	35,200 *	200
210						38,100 *		35,900 *	31,900 *	32,400 *	210
220								33,200 *		29,700 *	220
230								30,700 *		27,200 *	230
240								28,700 *		25,200 *	240
250										23,200 *	250
260										21,300 *	260
270										19,700 *	270
280										18,300 *	280

276' Boom											
Load Radius (ft)	118' Jib		138' Jib		157' Jib		177' Jib				Load Radius (ft)
	Boom Angle (deg.)		Boom Angle (deg.)		Boom Angle (deg.)		Boom Angle (deg.)				
	86	76	86	76	86	76	86	76			
75	112,100 *										75
80	104,800 *		104,100 *								80
85	98,200 *		97,600 *								85
90	92,500 *		91,800 *		91,100 *						90
95	87,200 *		86,500 *		85,900 *		76,900 *				95
100	82,300 *		81,700 *		81,100 *		75,100 *				100
110	73,600 *		73,100 *		72,500 *		70,500 *				110
120	66,000 *		65,900 *		65,300 *		64,200 *				120
130	59,200 *		59,300 *		59,000 *		58,100 *				130
140		56,100 *	53,500 *		53,300 *		52,700 *				140
150		50,700 *	48,300 *		48,300 *		47,800 *				150
160		46,400 *		45,300 *	43,800 *		43,500 *				160
170		42,900 *		41,400 *	39,700 *	38,500 *	39,700 *	36,100 *			170
180		39,900 *		37,900 *		35,200 *	36,300 *	32,900 *			180
190		37,100 *		34,900 *		32,200 *	32,900 *	30,000 *			190
200				32,300 *		29,900 *		27,500 *			200
210						27,800 *		25,300 *			210
220								23,300 *			220

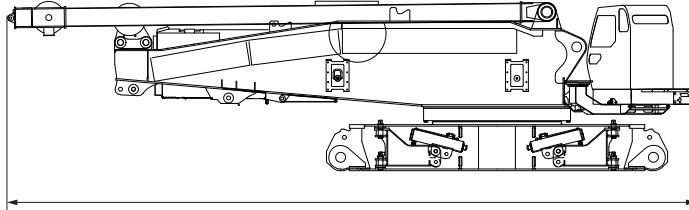
Note: Refer to supplemental data P15, P16, P17 and P18.

TRANSPORTATION PLAN

Base Machine

Base machine (1)

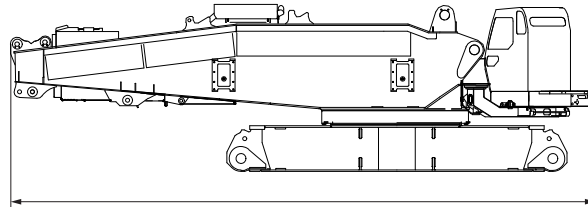
Base machine with mast and lower translifter without upper/lower connecting devices.



Weight	132,300 lbs
Width	9' 10"
Height	11' 2"
(Machine)	
Length	45' 7"

Base machine (2)

Base machine without mast, lower translifter and upper/lower connecting devices.

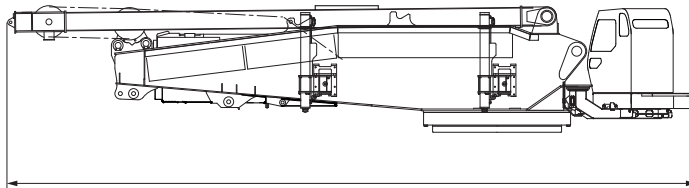


Weight	99,200 lbs
Width	9' 10"
Height	11' 2"
(Machine)	
Length	38' 5"

Upper Structure

Upper Structure (1)

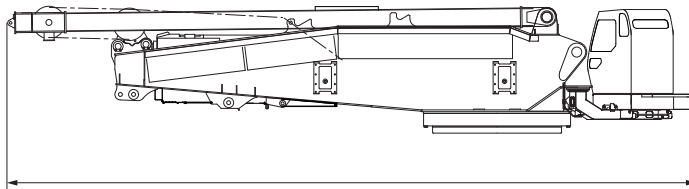
Upper structure with mast, upper translifter, and upper connecting devices.



Weight	98,300 lbs
Width	11' 5"
Height	8' 4"
(Machine)	
Length	45' 7"

Upper Structure (2)

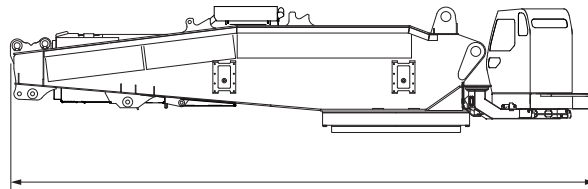
Upper structure with mast, and upper connecting devices.



Weight	93,000 lbs
Width	9'10"
Height	8' 4"
(Machine)	
Length	45' 5"

Upper Structure (3)

Upper structure and upper connecting devices without mast and upper translifter.

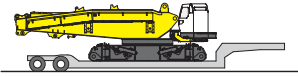


Weight	66,600 lbs
Width	9'10"
Height	8' 4"
(Machine)	
Length	38' 5"

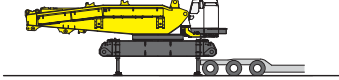
ASSEMBLY DISASSEMBLY

SELF-ERECTION SYSTEM

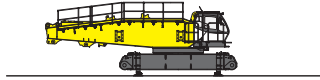
1



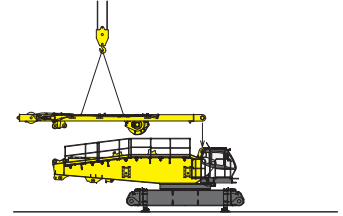
2



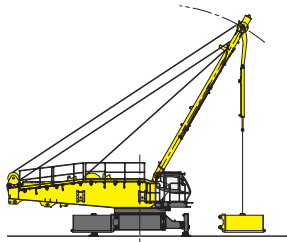
3



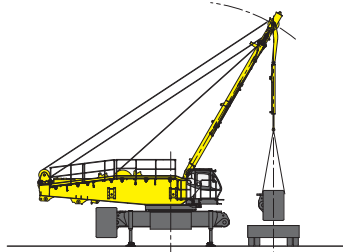
4



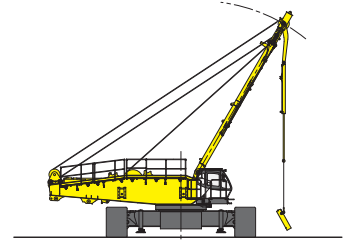
5



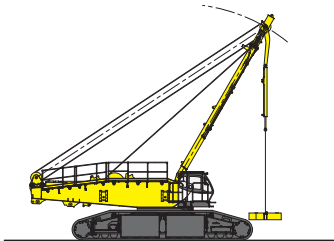
6



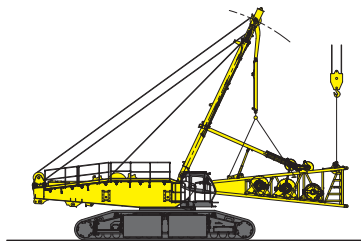
7



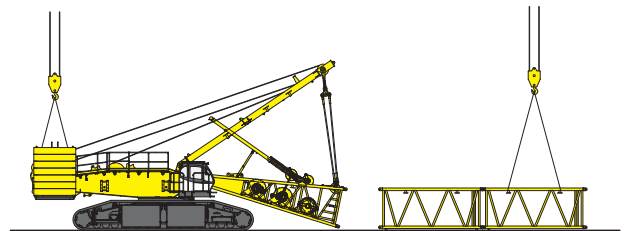
8



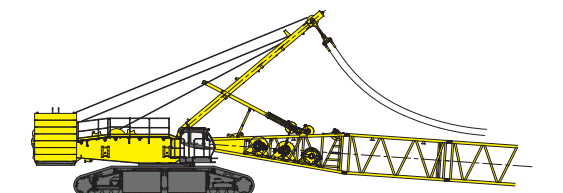
9



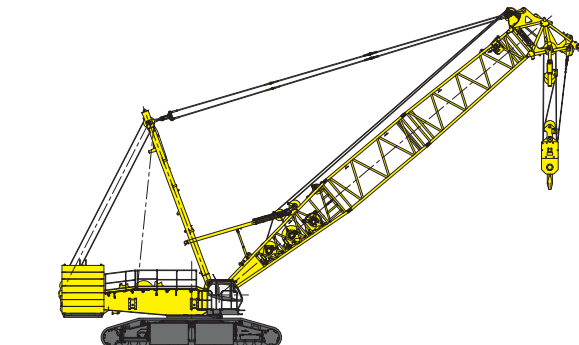
10



11



12

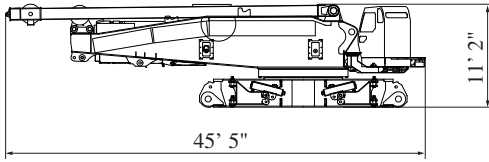


PARTS AND ATTACHMENTS

Dimensions: ft-in (mm) Weight: lbs (kg)

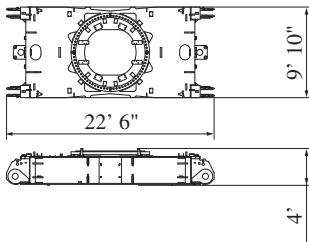
Base Machine

With most an lower transfliter without upper/lower connecting devices
 Weight: 132,300 lbs (59,200 kg) Width: 9' 10" (2,990 mm)



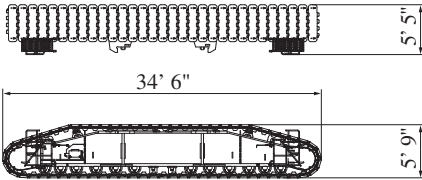
Carbody

With upper/lower connecting devices
 Weight: 44,100 lbs (20,000 kg) Width: 9' 10" (2,990 mm)



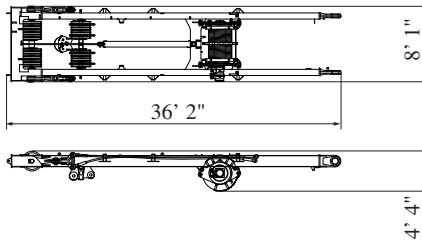
Crawler

Weight: 67,200 lbs (30,500 kg) Width: 5' 3" (1,600 mm)



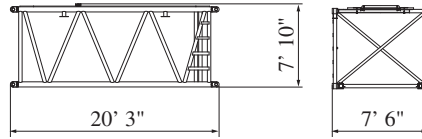
Crane Mast (Standard)

Weight: 26,200 lbs (11,900 kg)



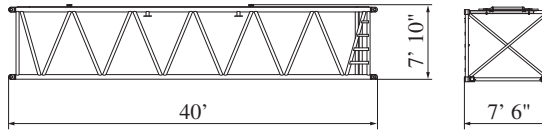
20 ft (6 m) Insert Boom

Weight: 5,300 lbs (3,500 kg)



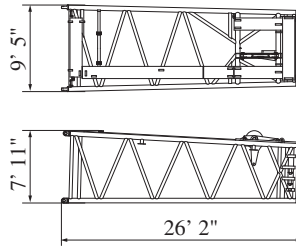
40 ft (12 m) Insert Boom

Weight: 10,200 lbs (6,500 kg)



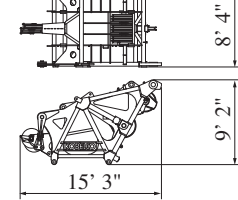
25.6 ft (7.8 m) Tapered Boom

Weight: 7,900 lbs (3,200 kg)



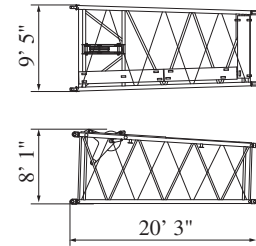
Luffing Boom Top

Weight: 13,400 lbs (6,100 kg)



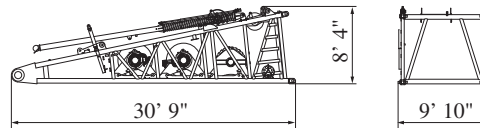
20 ft (6 m) Long Tapered Boom

Weight: 3,500 lbs (1,600 kg)



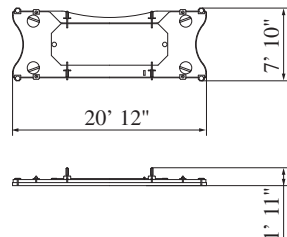
29.6 ft (9 m) Boom Base

With H1 (Front), H2 (Rear) and W2 (Luffing) winches including ropes, guide sheave, and boom backstop
 Weight: 53,100 lbs (24,100 kg)



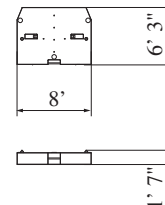
Base Counterweight

Weight: 44,200 lbs (20,000 kg)



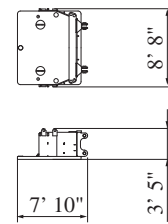
Counterweight (Carbodyweight)

Weight: 22,100 lbs (10,000 kg)



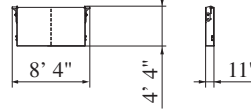
Base Carbody Weight

Weight: 12,500 lbs (5,690 kg)



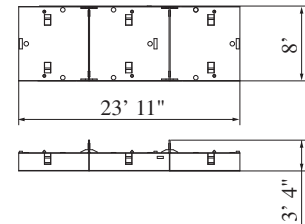
Crawler Weight

Weight: 11,050 lbs (5,000 kg)



Base Pallet Weight

Weight: 20,500 lbs (9,300 kg)

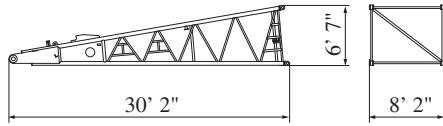


SL4500R

Dimensions: ft-in (mm) Weight: lbs (kg)

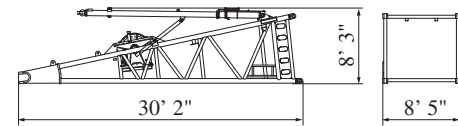
30 ft (9 m) Jib Base

Weight: 6,200 lbs (2,800 kg)



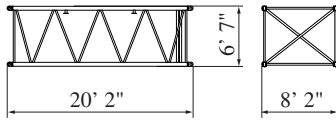
HL Mast Base

Weight: 17,900 lbs (8,100 kg)



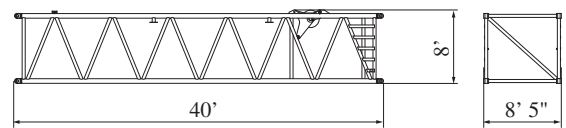
20 ft (6 m) Insert Jib

Weight: 3,100 lbs (1,400 kg)



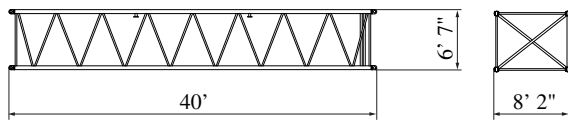
HL 40 ft (12 m) Mast Base

Weight: 8,400 lbs (3,800 kg)



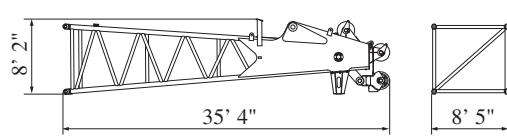
40 ft (12 m) Insert Jib

Weight: 5,300 lbs (2,440 kg)



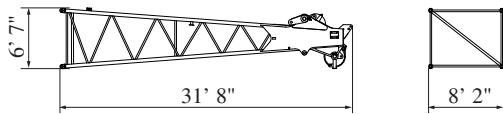
HL Mast top

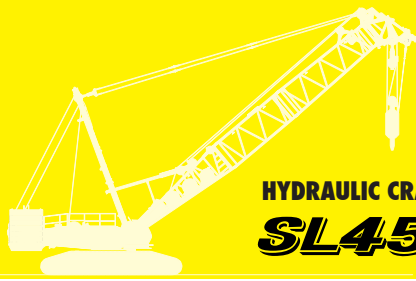
Weight: 17,600 lbs (8,000 kg)



30 ft (9 m) Jib Top

Weight: 6,200 lbs (2,400 kg)





HYDRAULIC CRAWLER CRANE
SL4500R

Note: Standard equipment may vary depending on your areas or countries.

Due to our policy of continual product improvements all designs and specifications are subject to change without advance notice.

Copyright by KOBELCO CRANES CO., LTD. No part of this catalog may be reproduced in any manner without notice.

KOBELCO CRANES CO., LTD.

17-1, Higashigotanda 2-chome, Shinagawa-ku, Tokyo 141-8626 JAPAN

Tel: +81-3-5789-2130 Fax: +81-3-5789-3372

URL: <http://www.kobelco-cranes.com/>

KOBELCO CRANES NORTH AMERICA, INC.

10845 Train Court, Houston, Texas 77041, U.S.A

Tel: +1-713-856-5755 Fax: +1-713-856-9072

URL: <http://www.kobelcocranesnorthamerica.com/>

KOBELCO is the corporate mark used by Kobe Steel on a variety of products and in the names of a number of Kobe Steel Group companies.

Bulletin No. SL4500R-2SPEC-L1 1102000IF Printed in Japan