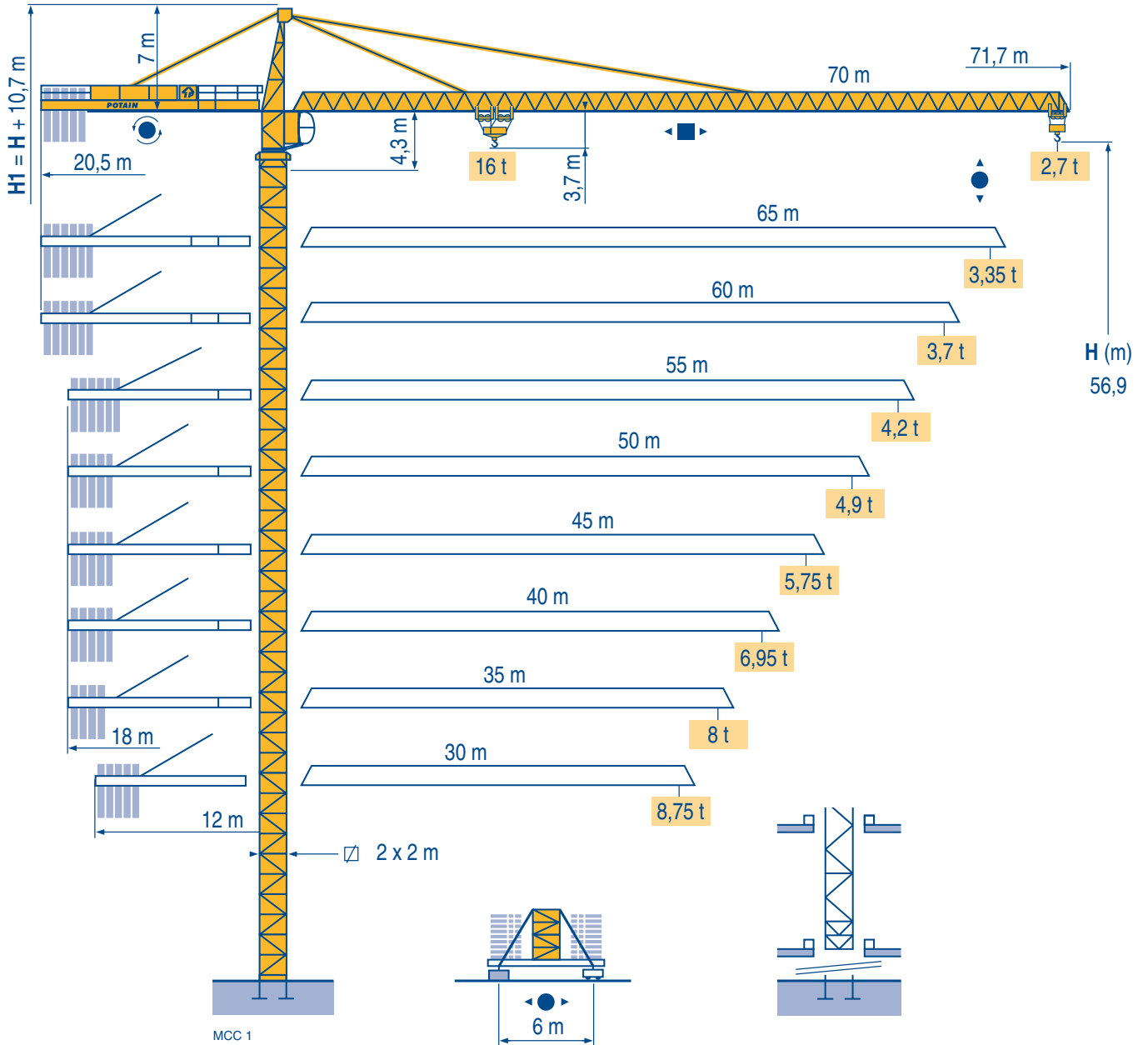


# MC 310 K16



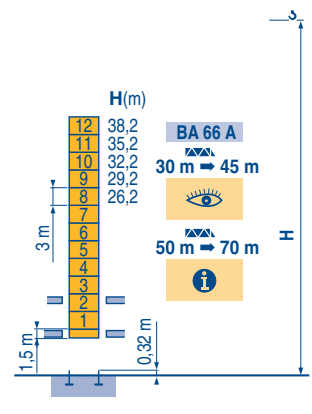
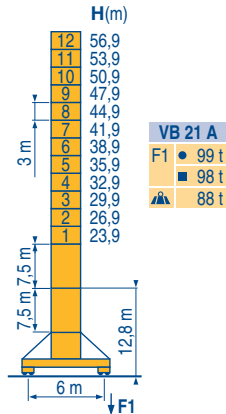
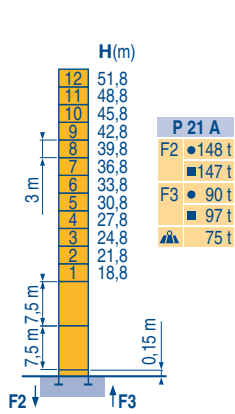
**TOPKIT**

  FEM 1.001-A3  
ISO 9001

Masts / Reactions

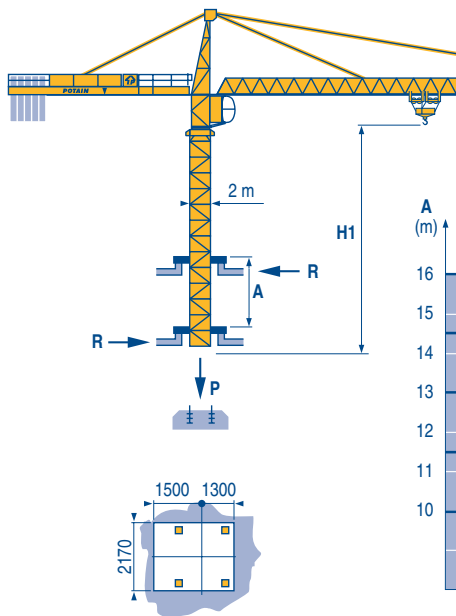
□ 2 m  
 ▨ 30 m ⇒ 70 m

MCC 1



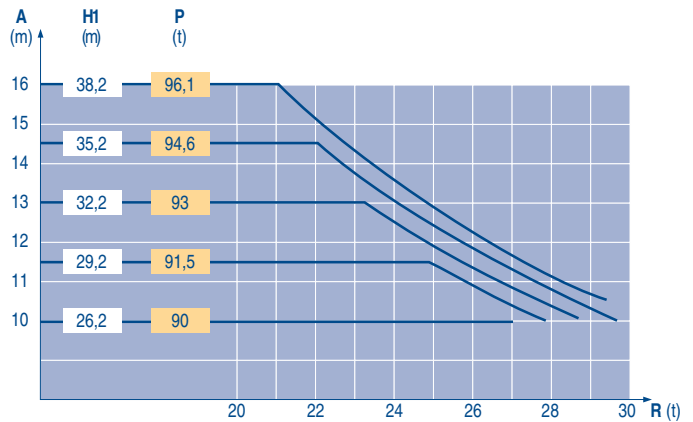
Climbing crane

MCC 1



**BA 66 A**

▨ 45 m



TOPKIT MC 310 K16

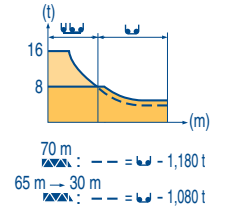
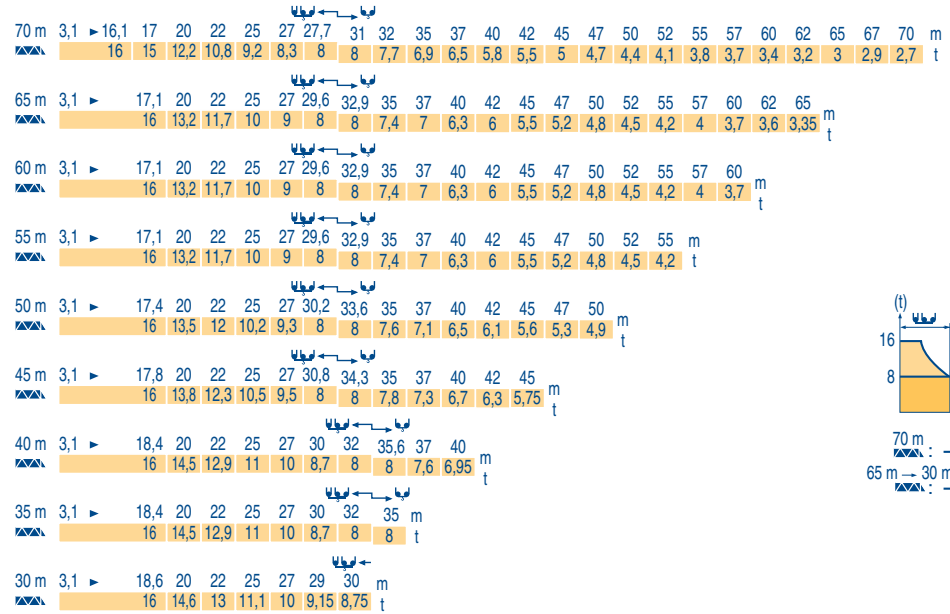


GB

- Reactions in service
- Reactions out of service
- ▲ Without load, ballast (or transport axles), with maximum jib and maximum height.
- i Consult us
- 👁 See climbing crane

## Load diagrams

MCC 1



## Counter-jib ballast

MCC 1

	4 600 - 4 200 - 2 300 kg			4 200 - 700 kg		
		75 LVF 40			75 LVF 40 150 LCC 40	
			(kg)			(kg)
70 m	20,5 m	24 500	20,5 m	24 500	22 400	
65 m	20,5 m	23 700	20,5 m	23 800	21 700	
60 m	20,5 m	21 800	20,5 m	21 700	19 600	
55 m	18 m	24 900	18 m	24 500	23 100	
50 m	18 m	22 600	18 m	22 400	20 300	
45 m	18 m	19 500	18 m	18 900	17 500	
40 m	18 m	17 200	18 m	16 800	15 400	
35 m	18 m	14 900	18 m	14 000	12 600	
30 m	12 m	20 700	12 m	20 300	18 900	

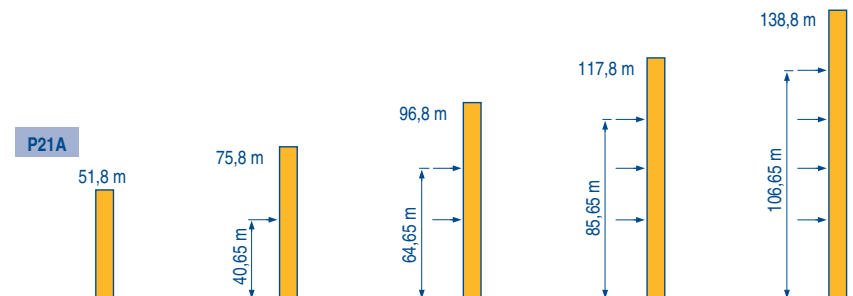
## Base ballast

MCC 1

2 m	VB 21 A	H (m)	56,9	53,9	50,9	47,9	44,9	41,9	38,9	35,9	32,9	29,9	26,9	23,9
		(t)	84	72	72	72	72	72	72	60	60	60	60	60

## Anchorage

MCC 1



TOPKIT  
MC 310 K16




POTAIN

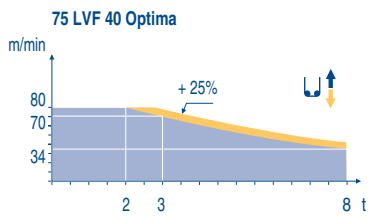
GB


- A Distance between collars
- H1 Crane height
- P Crane weight (in service)
- R Horizontal reaction


# Mechanisms

MCC 1

		↕ ↑				↕ ↕ ↑				hp	kW	
↕	75 LVF 40 Optima	m/min	0	→	34 → 44 → 70 → 80	0	→	17 → 22 → 35 → 40	75	55	553 m	
	t		8		6 3 2	16		12 6 4				
↕	150 LCC 40	m/min	68	→	82 → 102 → 136 → 162	34	→	41 → 51 → 68 → 81	150	110	596 m	
	t		8		6 4 2 1	16		12 8 4 2				
↔	6 DVF 6	m/min	0 → 42 (16 t) 0 → 84 (8 t) 0 → 100 (4 t)						5,5	4		
↻	RVF 162 Optima	rpm	0 → 0,7						2 x 7,5	2 x 5,5		
↻	VB 20A VB 21A	RT 544 A1 2V R ≥ 13 m	13,5 - 27						4 x 7	4 x 5,2		
CEI 38  IEC 38		kVA										
400 V (+6% -10%) 50 Hz		75 LVF : 100 kVA 150 LCC : 175 kVA				2000/14						



-  **GB** Hoisting
-  Trolleying
-  Slewing
-  Travelling
-  In compliance with the EEC Instructions on noise level

 This commercial document is not legally binding.  
For any technical information, please refer to the corresponding instructions.



**Manitowoc Crane Group Asia Pte Ltd**  
 Manitoowoc Crane Group  
 26 Benoi Road  
 Singapore 629898  
 Tel: 65-6861 7133  
 Fax: (Admin/ Sales) : 65-6862 4040  
 Fax: (Service/ Parts) : 65-6862 4142  
 www.manitowoccrane.com

**Americas**  
 Tel: +1 920 683 6322  
 Tel: +1 717 597 8121

**Europe - Middle East - Africa**  
 Tel : +(33) 4 72 81 50 00  
 Tel : +(44) 191 565 6281

**Asia - Pacific**  
 Tel: +(65) 6861 7133  
 Fax: +(65) 6862 4142

www.manitowoccrane.com

**TOPKIT MC 310 K16**

Réf. 2004 45 MCC 1

Copyright.Reproduction interdite © POTAIN 2004

Réalisation Sedoc