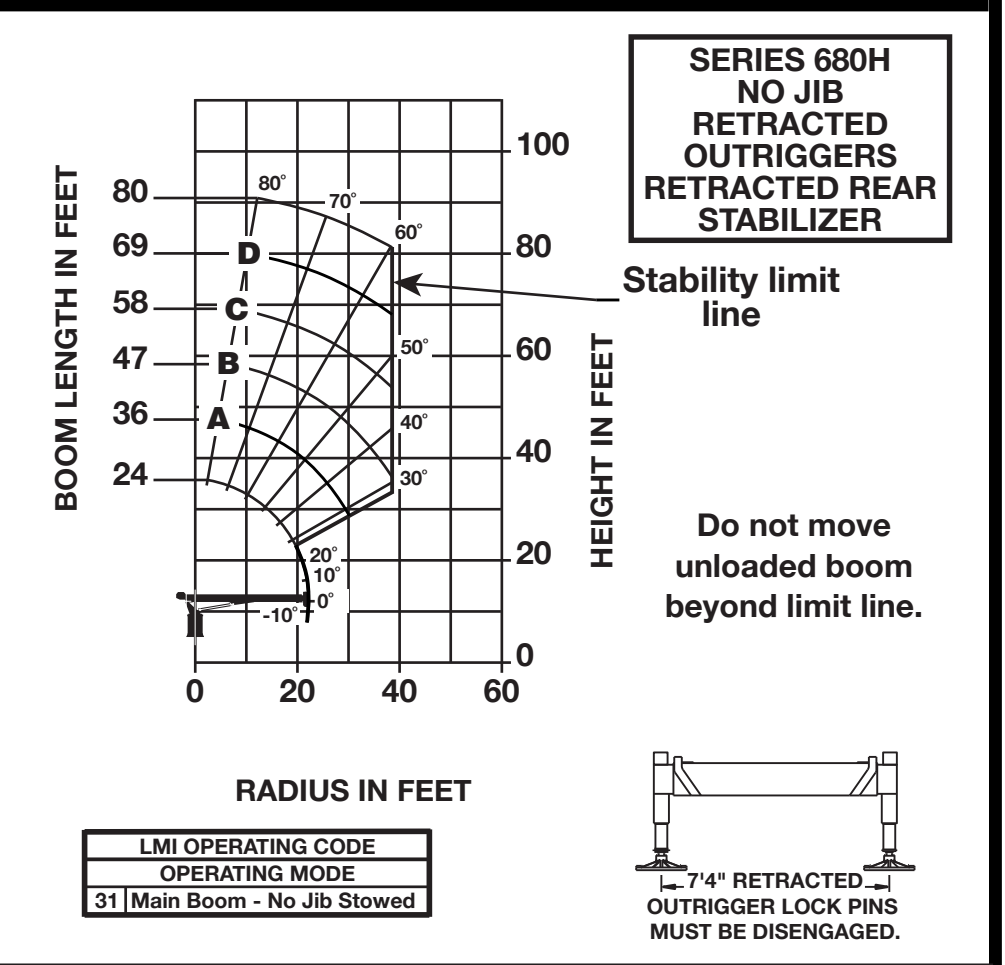
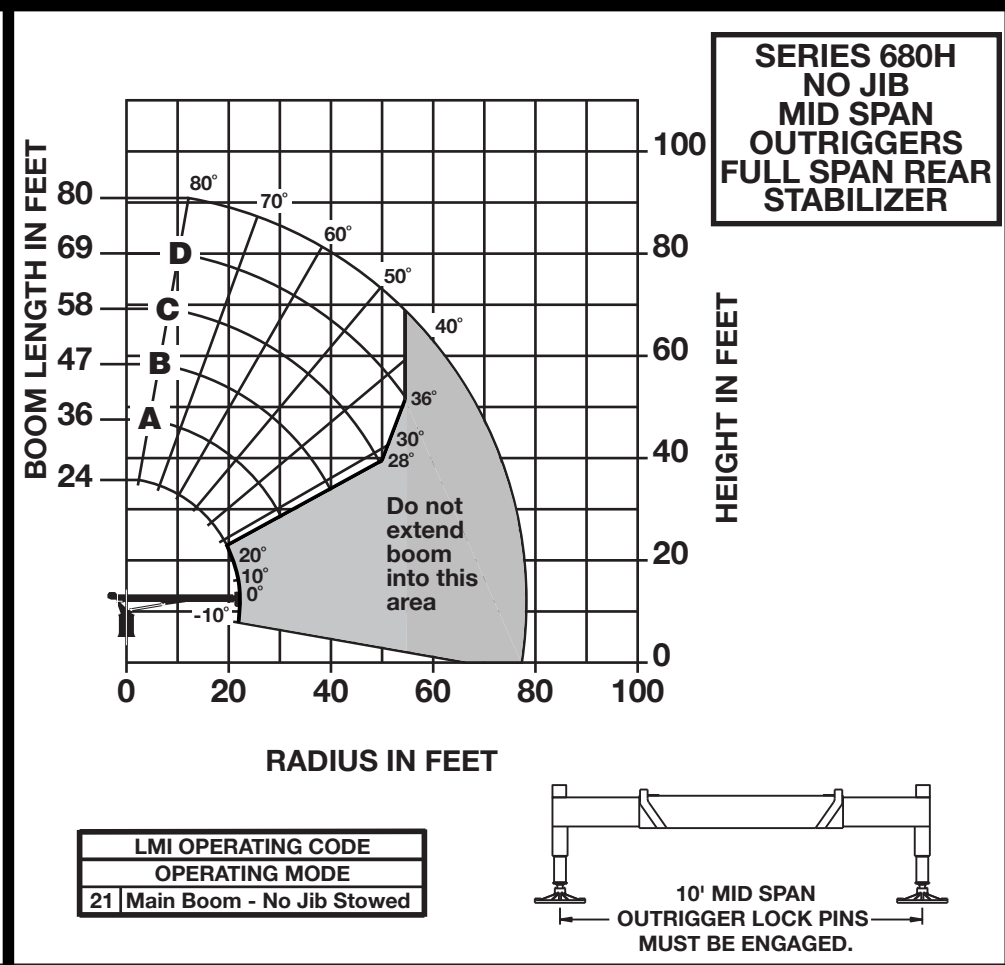
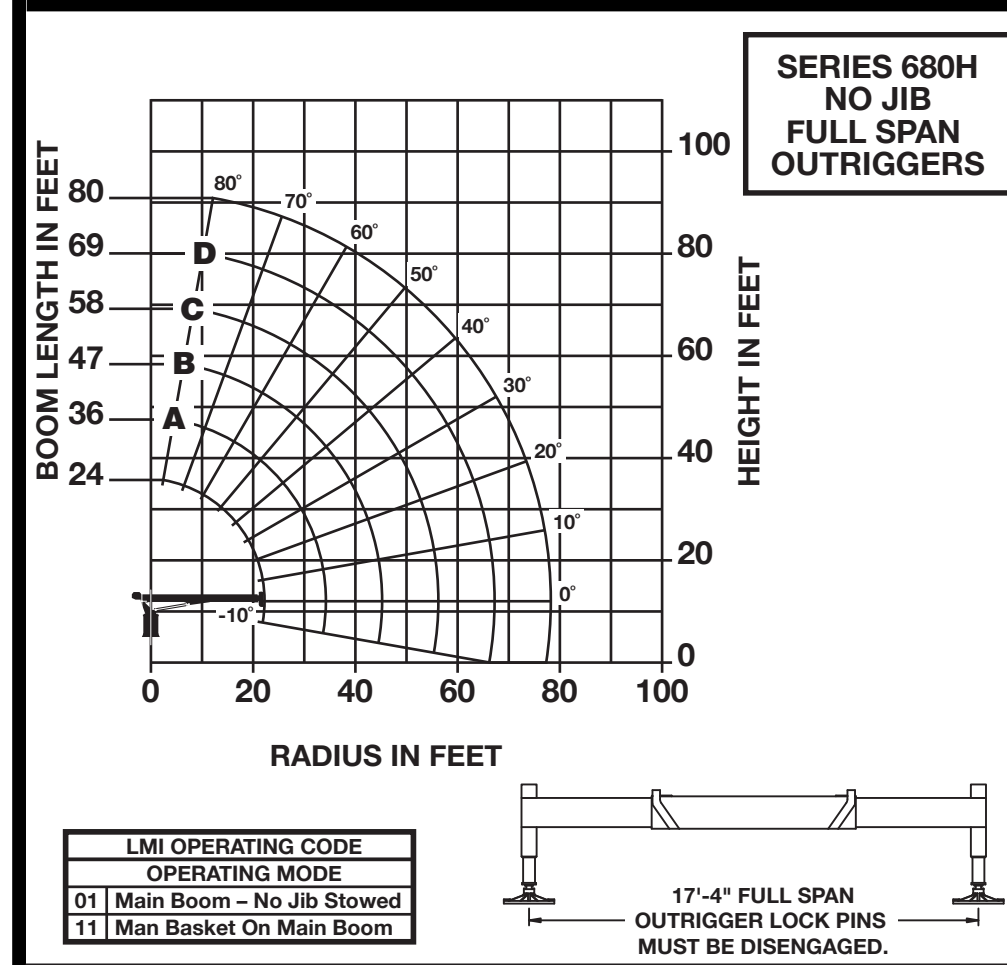


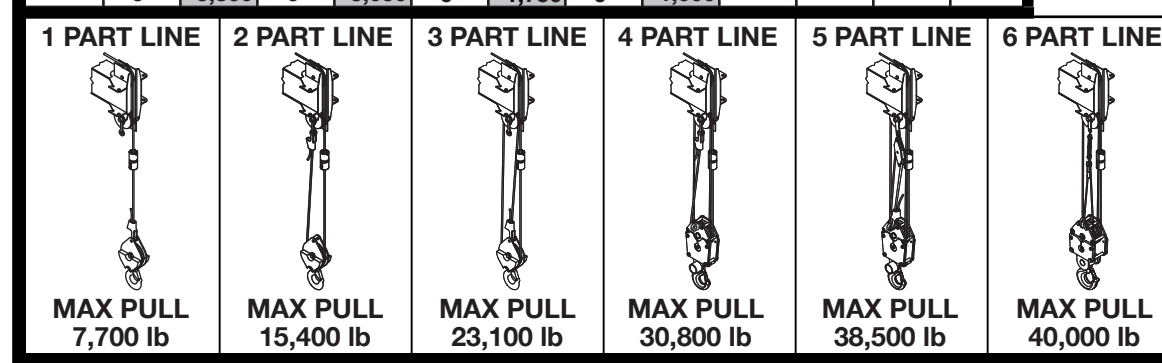
# NATIONAL CRANE CORPORATION

7679100517



## LOAD RATINGS

LOADED RADIUS (ft)	LOADED BOOM ANGLE (deg)	LOAD RATINGS (lb)															
		24 FT	36 FT	47 FT	58 FT	69 FT	80 FT	24 FT	36 FT	47 FT	58 FT	69 FT	80 FT				
5	76	40,000						5	76	40,000							
8	68	27,100	75	25,400				8	68	27,100	75	25,400					
10	62.5	22,400	72	21,400	76.5	20,600		10	62.5	22,400	72	21,400	76.5	20,600			
12	56.5	19,500	68.5	18,350	74	17,550	77.5	17,050	12	56.5	19,500	68.5	18,350	74	17,550	77.5	
14	50.5	17,100	65	16,000	71.5	15,300	73.5	14,750	14	50.5	17,100	65	16,000	71.5	15,300	73.5	
16	43.5	14,750	61	14,200	70	13,550	73.5	13,050	16	43.5	14,750	61	14,200	70	13,550	73.5	
20	27	11,100	53.5	11,450	63.5	11,000	69.5	10,550	20	27	11,100	53.5	11,450	63.5	11,000	69.5	
25			43	9,150	55.5	9,000	64	8,450	25			43	9,150	55.5	9,000	64	
30			29.5	7,000	48	7,200	58.5	7,050	30			29.5	7,000	48	7,200	58.5	
35				5,850	52	5,900	59.5	5,700	35				5,850	52	5,900	59.5	
40				4,650	45	4,800	54.5	4,850	40				4,650	45	4,800	54.5	
45				2,600	37	4,100	49	4,150	45				2,600	37	4,100	49	
50						2,8	3,450	43	50						2,8	3,450	43
55						13.5	2,200	36	55						13.5	2,200	36
60							2,450	41.5	60							2,450	41.5
65							1,650	35.5	65							1,650	35.5
70								28.5	70								28.5
75								18.5	75								18.5



**NOTICE**

- Do not deadhead line block against boom tip when extending boom.
- Keep at least 3 wraps of loadline on drum at all times.
- Use only 9/16" diameter rotation resistant cable with 38,500 lb breaking strength on this machine.

**NOTE:**

1. Capacities do not exceed 85% stability on the full span capacity chart.
2. Capacities do not exceed stability based on ISO 4305-1991 on the mid-span and retracted capacity charts.
3. Shaded areas are structurally limited capacities.
4. Handling of personnel is only permitted with full span outriggers.

**LOADLINE EQUIPMENT DEDUCT (lb)**

Downhaul weight	..... 150
One sheave block	..... 200
Two sheave block	..... 355