



*Altec LMAP System*

## RECOMMENDED FEATURES

- Wheel Chocks
- Outrigger Pads
- Fall Protection System (with platform)
- Radio Remote Control (with platform)
- Platform Test Lift Package (with platform)

## OPTIONS

- 1-Piece 26 ft (7.9 m) Jib
- 2-Piece 44 ft (13.4 m) jib, 26 ft (13.4 m) Retracted
- 2-Man Steel Platform
- 370 Degree Non-Continuous Rotation
- Continuous Rotation
- 12,000 lb (5,443 kg) 2 Speed Winch
- Hydraulic Tool Circuit at Tail Shelf
- Hydraulic Tool Circuit at Boom Tip
- Rotation Resistant Wire Rope
- Winch Control at Load Hook Stow Point
- Hydraulic Oil Cooling System

## STANDARD SAFETY FEATURES

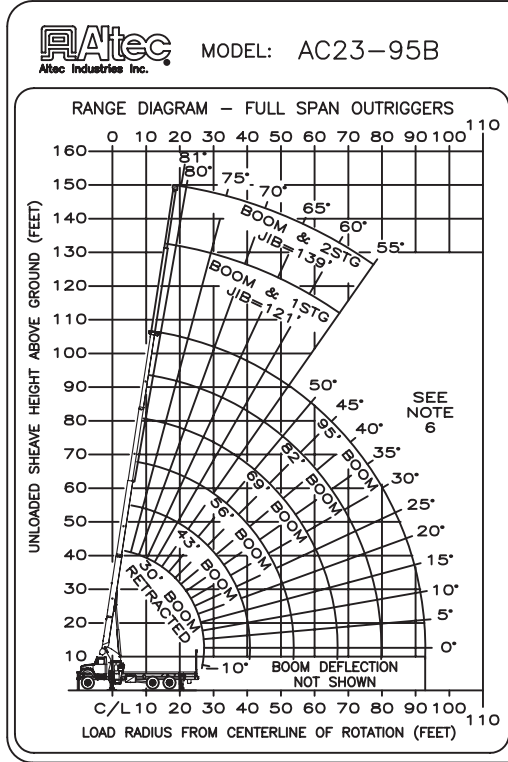
- Altec LMAP (Load Moment & Area Protection) System
  - Rated Capacity Limiter
  - Displays: Boom Length, Boom Angle, Load on Hook, Percent of Rated Capacity
  - Electronic Working Area Definition
  - Operator Defined Audible Alarm Set-Points for Boom Angle, Length and Rotational Position
- Outrigger Boom Interlock System
- Outrigger Motion Alarm
- Back-Up Alarm
- Emergency Stop at Operator Controls
- Winch Drum Rotation Indicator
- Anti-Two Block Device
- Front Bumper Outrigger
- Walk-Through Control Stations

## CRANE SPECIFICATIONS

- 47,000 lb (21,319 kg) Maximum Lifting Capacity
- 95 ft (29 m) 4-Section Boom
- 105 ft (32 m) Maximum Sheave Height
- Stowed Travel Height of 13.25 ft (4.04 m)
- Vehicle Travel Length of 39.9 ft (12.1 m)
- 3 Position Out-and-Down Outriggers
  - Full Span 18.5 ft (5.6 m)
  - Mid Span 14 ft (4.3 m)
  - Short Span 9 ft (2.7 m)
- Hydraulic Pilot-Operated Control System
- 12,000 lb (5,443 kg) Winch w/ Burst of Speed

UNIT		RECOMMENDED CHASSIS DIM				MINIMUM RECOMMENDED CHASSIS SPECIFICATION				
Model	Rear Axle	CT (in)	WB (in)	AF (in)	AS (in)	Front Axle Rating (lbs)	Rear Axle Rating (lbs)	GVWR (lbs)	Frame Sec Modulus (in <sup>3</sup> )	Frame RBM (in-lb)
AC23	Tandem	193	262	127	54	16,000	34,000	50,000	21.4	2,354,000

# Altec AC23-95B Capacities



BOOM LOAD CAPACITIES IN LBS. WITH FULL SPAN OUTRIGGERS

LOAD RADIUS (FT)	30 FT BOOM	43 FT BOOM	56 FT BOOM	69 FT BOOM	82 FT BOOM	95 FT BOOM
5	77	47000				
8	71	36800	77	17600		
10	66	30900	74	17800	78	17500
12	62	26100	71	18000	76	17600
14	57	22200	68	18200	74	17700
16	52	19100	65	18500	72	17900
18	47	17600	62	18000	70	18100
20	41	15400	59	15800	68	16000
25	19	11400	51	11900	62	12100
30			42	9300	56	9500
35			30	7400	49	7600
40					42	8100
45					33	4800
50					20	3800
55						
60						
65						
70						
75						
80						
85						
90						
0	8000	0	4900	0	3100	0
	825	550	425	350	300	250

NOTE: RATINGS ABOVE THE HEAVY LINE ARE BASED ON STRUCTURAL COMPETENCE AND NOT ON MACHINE STABILITY.

AREA OF OPERATION

DO NOT WORK IN THIS AREA WITHOUT FRONT BUMPER OUTRIGGER DEPLOYED

360° CAPACITY WORKING AREA AVAILABLE ONLY WITH FRONT BUMPER OUTRIGGER

DEDUCTIONS FROM RATED LOADS FOR HANDLING DEVICES

OVERHAUL BALL: 180 LBS

1-SHEAVE LOADBLOCK: 230 LBS

2-SHEAVE LOADBLOCK: 365 LBS

0° BOOM CAPACITIES

STOWED JIB LOAD DEDUCTIONS

970162004 C (SHEET 1)

DEPLOYED JIB LOAD CAPACITIES (LBS) FOR ALL BOOM LENGTHS

JIB CAPACITIES ARE FOR FULL SPAN OUTRIGGERS (18 FT 6 IN CENTER TO CENTER)

LOADED BOOM ANGLE	55° *	60°	65°	70°	75°	80°
RETRACTED 26 FT JIB	775	1450	2250	3100	4100	4100
EXTENDED 44 FT JIB	550	1125	1550	2050	2550	2550

\* DO NOT OPERATE JIB BELOW THIS ANGLE UNLESS BOOM IS FULLY RETRACTED. SEE NOTE 6.

OPERATOR AIDS MUST BE IN GOOD OPERATING CONDITION BEFORE OPERATING CRANE. REFER TO OWNERS MANUAL.		1 PART LOAD LINE		2 PART LOAD LINE		3 PART LOAD LINE		4 PART LOAD LINE		5 PART LOAD LINE		6 PART LOAD LINE	
		LOADS UP TO	LOADS UP TO	LOADS UP TO	LOADS UP TO	LOADS UP TO	LOADS UP TO	LOADS UP TO	LOADS UP TO				
KEEP AT LEAST 3 WRAPS OF LOADLINE ON DRUM AT ALL TIMES.													
USE ONLY 9/16" (1.47 cm) DIAMETER IWRC OR ROTATION RESISTANT WIRE ROPE WITH 37,000 LBS (16,782 KG) MIN. BREAKING STRENGTH ON THIS MACHINE.		10,571 lbs	21,142 lbs	31,713 lbs	42,284 lbs	52,855 lbs	60,000 lbs						
		4,795 kg	9,590 kg	14,385 kg	19,180 kg	23,975 kg	27,216 kg						
ROTATION RESISTANT WIRE ROPE (LBS)		7,400 lbs	14,800 lbs	22,200 lbs	29,600 lbs	37,000 lbs	44,400 lbs						
ROTATION RESISTANT WIRE ROPE (KG)		3,356 kg	6,713 kg	10,069 kg	13,426 kg	16,783 kg	20,140 kg						
MAXIMUM BOOM LENGTH AT MAXIMUM ELEVATION WITH RIGGING SHOWN TO REACH THE GROUND (FT)		103 FT BOOM + 44 FT JIB	103 FT BOOM	74 FT BOOM	56 FT BOOM	45 FT BOOM	37 FT BOOM						
MAXIMUM BOOM LENGTH AT MAXIMUM ELEVATION WITH RIGGING SHOWN TO REACH THE GROUND (M)		32 m BOOM + 13 m JIB	32 m BOOM	23 m BOOM	17 m BOOM	13 m BOOM	11 m BOOM						
WINCH		LIFTS AND SPEEDS (ENGLISH UNITS)											
9/16" (1.4cm) DIAMETER IWRC XXIP CABLE SUPPLIED	STANDARD PLANETARY WINCH HIGH SPEED	4,620 LBS. 249 FT/MIN	9,240 LBS. 124 FT/MIN	13,860 LBS. 83 FT/MIN	18,480 LBS. 62 FT/MIN	23,100 LBS. 50 FT/MIN	27,720 LBS. 42 FT/MIN						
	STANDARD PLANETARY WINCH LOW SPEED	9,880 LBS. 115 FT/MIN	19,760 LBS. 58 FT/MIN	29,640 LBS. 38 FT/MIN	39,520 LBS. 29 FT/MIN	49,400 LBS. 23 FT/MIN	59,280 LBS. 19 FT/MIN						
WINCH		LIFTS AND SPEEDS (METRIC UNITS)											
9/16" (1.4cm) DIAMETER IWRC XXIP CABLE SUPPLIED	STANDARD PLANETARY WINCH HIGH SPEED	2,096 kg 1.26 m/s	4,272 kg .63 m/s	6,287 kg .42 m/s	8,382 kg .37 m/s	10,477 kg .264 m/s	12,573 kg .21 m/s						
	STANDARD PLANETARY WINCH LOW SPEED	4,481 kg .58 m/s	8,963 kg .30 m/s	13,444 kg .19 m/s	17,925 kg .15 m/s	22,407 kg .12 m/s	26,888 kg .09 m/s						
ALL WINCH PULLS AND SPEEDS IN THIS CHART ARE SHOWN ON THE 3RD LAYER. WINCH LINE PULLS WOULD INCREASE ON THE FIRST AND SECOND LAYERS. WINCH LINE SPEED WOULD DECREASE ON THE FIRST AND SECOND LAYERS. WINCH LINE PULLS MAY BE LIMITED BY THE WINCH CAPACITY OF 8,390 LBS (3,806 KG) FULL DRUM OR ANSI CABLE SAFETY LIMITS SHOWN IN CHART FOR IWRC XXIP AND ROTATION RESISTANT WIRE ROPES.													

## Winch Specifications

Altec Cranes are supported by service centers and over 115 mobile service technicians positioned across North America, seven days a week, 24 hours a day.

**United States:**

Alabama Service Center  
1730 Vanderbilt Road  
Birmingham, AL 35234

Arizona Service Center  
2420 South 16th Avenue  
Phoenix, AZ 85007

California Service Center (Northern)  
325 Industrial Way  
Dixon, CA 95620

California Service Center (Southern)  
2882 Pomona Boulevard  
Pomona, CA 91766

Colorado Service Center  
641 Telluride Street  
Aurora, CO 80011

Florida Service Center  
2570 Old Okeechobee Road  
West Palm Beach, FL 33409

Georgia Service Center  
287 First Street  
Forest Park, GA 30297

Indiana Service Center  
5201 West 84th Street  
Indianapolis, IN 46268

Kentucky Service Center  
200 Altec Drive  
Elizabethtown, KY 42701

Maryland Service Center  
1434 Hughes Ford Road  
Frederick, MD 21701

Massachusetts Service Center  
28 Wales Street  
Millbury, MA 01527

Missouri Service Center  
2106 S. Riverside Road  
St. Joseph, MO 64507

North Carolina Service Center  
1550 Aerial Avenue  
Creedmoor, NC 27522

Ohio Service Center  
1236 Township Road 1175  
Ashland, OH 44805

Oregon Service Center  
13817 NE Sandy Boulevard  
Portland, OR 97230

Pennsylvania Service Center  
250 Laird Street  
Plains, PA 18705

Texas Service Center  
1001 Solon Road  
Waxahachie, TX 75156

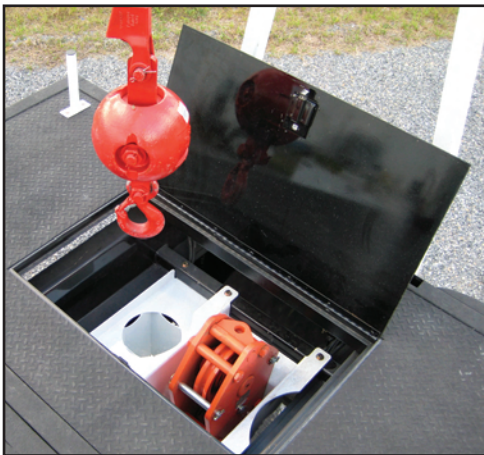
Virginia Service Center  
325 South Center Drive  
Daleville, VA 24083

**Canada:**

British Columbia Service Center  
12352 84th Avenue  
Surrey, BC V3W 0J5

Manitoba Service Center  
57 Durand Road  
Winnipeg, Manitoba R2J 3T1

Ontario Service Center  
831 Nipissing Road  
Milton, Ontario L9T 4Z4



*Optional Recessed Load Block and Ball Storage*



*Walk Through Control Stations*

**Altec Industries, Inc.**

325 South Center Drive  
Daleville, VA 24083  
1-540-992-5300