



SRC840 Operator Comfort

SANY

Quality equipment, superior customer support, global technologies... that's what makes SANY stand out. We are dedicated to designing and building the best equipment in the business.



Cab Features

Ergonomic cab with all steel construction, optimum visibility, tinted safety glass throughout, and rubber floor mat. Cab is mounted on vibration absorbing pads. The cab has a sliding door on the left side, framed sliding window on the right side and opening top hatch to provide optimum visibility of the load. Acoustical foam padding insulates against sound and weather. The deluxe six-way adjustable seat is equipped with a mechanical suspension and includes head and arm rests.



Sany Designed LMI

The SANY designed LMI has an extra large display screen featuring both lifting and travel modes as well as many operator aids, including Anti-two block and function lockout.



SANY America, unveiled it's North American manufacturing and support facility in 2011. The plant will incorporate global technologies throughout engineering, manufacturing, finishing, testing in these support facilities. The latest SANY quality assurance procedures will be applied to every product manufactured here.



The Shapes of Things to Come. SANY...Investing in America.



SANY

100 World Dr. Suite 218, Peachtree City, GA 30269
Tel: 678-251-2869 Fax: 770-631-7731 • Email: sales@sanyamerica.com • www.sanyamerica.com

SRC840-3s-11 © SANY 2011



SANY

AMERICA INC.



Rough
Terrain
Crane
SRC840

Superior Design. Performance. Support.



SRC840 Features

SANY

Superior Accessibility

Full length anti-skid decking, 5 ladders on all sides and a hoist platform.

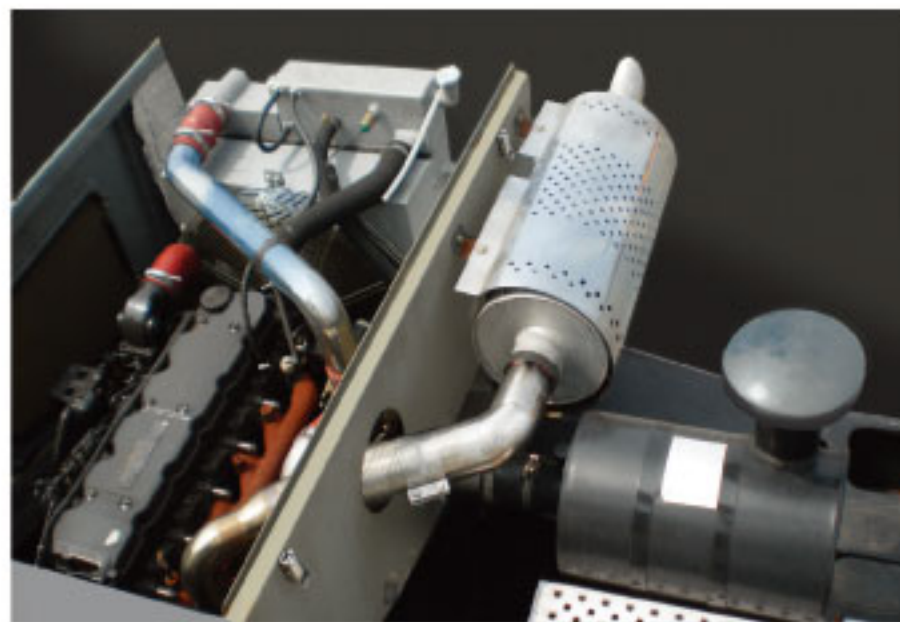
Hydraulic System

Parker pumps are featured. **Husco** main valve and filters are conveniently located behind the operator's cab as well as the hydraulic driven **Red Dot** air conditioning unit for easy accessibility.



Easy to Maneuver

Box type chassis with 4x4 drive steer, Axle Tech axles and three position outriggers.



High Quality, Name Brand Components

Powertrain features **Cummins** engine, **Dana** Powershift Transmission and **Axletech** Axles. The hoists are from **Braden** Winches. The well known components bring high reliability and the assurance the parts and service are there for you.



Specifications

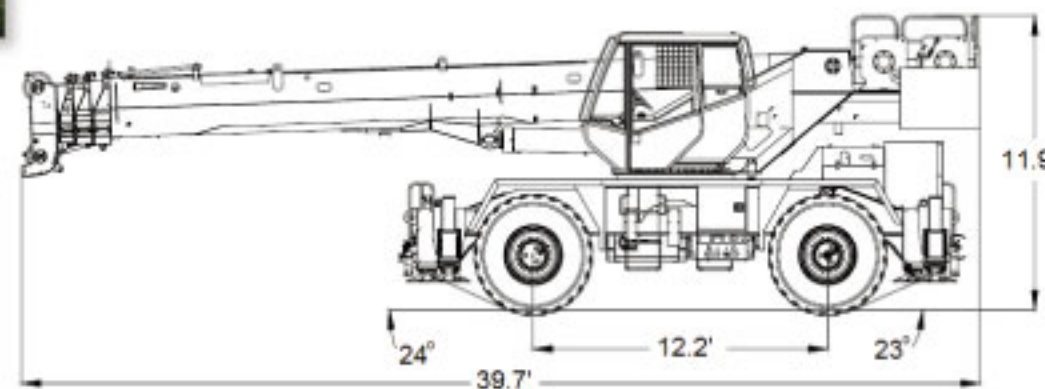
SANY



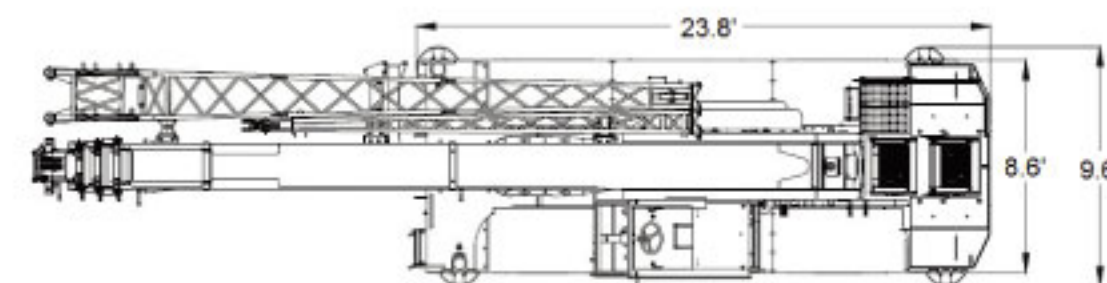
Service and Parking Brakes

Fully hydraulic actuated disc dual caliper brakes on front axle and single disc caliper brakes on rear axle. Brakes are actuated by foot pedal in the cab. Parking brake is spring applied, hydraulic release. Parking brake disc is mounted to front axle differential.

Engine	Cummins QSB6.7 Tier 3 diesel engine (Tier4 - optional) Rated power: 160 hp @ 2500 rpm Rated output torque: 540.ft @ 1500 rpm 75 gallon diesel fuel tank
Hydraulic System	System consists of one gear type pump and two piston pumps driven off the transmission. Combined system capability is 109gpm. 100 gallon hydraulic reservoir.
System Voltage	24 Volt (2 x 12V batteries)
Swing System	Swing is driven by a single motor with large displacement and planetary gear reducer, automatic load centering and 360° rotation. The maximum swing speed is 2.7rev/min.
Hoists	Braden Hoists on Main and Auxiliary 5/8" wire rope. Max. line speed (no load) - 460 ft/min Max. line pull - 14,000 lbs
Axle Loads	Front Axle 32,960 lbs Rear Axle 30,865 lbs TOTAL 63,825 lbs
Turning Radius	4 Wheel Steer 35 feet 2 Wheel Steer 20 feet



SRC840 - OUTRIGGERS - FULLY EXTENDED, 360° ROTATION								
Boom Length (ft)								
Load Rad (ft)	33	40	50	60	70	80	90	103
	Capacity (lb)							
10	80000	50700	48722					
12	69688	50700	48722	46407				
15	55997	48400	47399	44313	40635			
20	40124	36750	37170	35300	32550	31185	23100	
25	30049	28140	26798	28770	27090	25830	23100	19425
30		22312	20131	22942	22890	21840	19267	18375
35			15672	18795	18952	18690	16380	15960
40			12480	15172	15382	15540	14175	13860
45				12232	12390	12495	12337	12180
50				9877	10164	10258	10269	10279
55					8326	8484	8515	8536
60					6828	7056	7108	7140
65						5830	5953	5995
70						4807	4976	5040
75							4107	4242
80							3364	3528
85								2884
90								2319
95								1822



Industry Leading Boom and Jib

33-103 ft, four section full power boom. Boom elevation of -2 to 78 degrees.

Maximum tip height 110 ft.

26-45 ft side stow bifold swingaway lattice type jib.

Jib is offsettable at 0, 15, or 30 degrees.

Maximum tip height is 154 ft.

