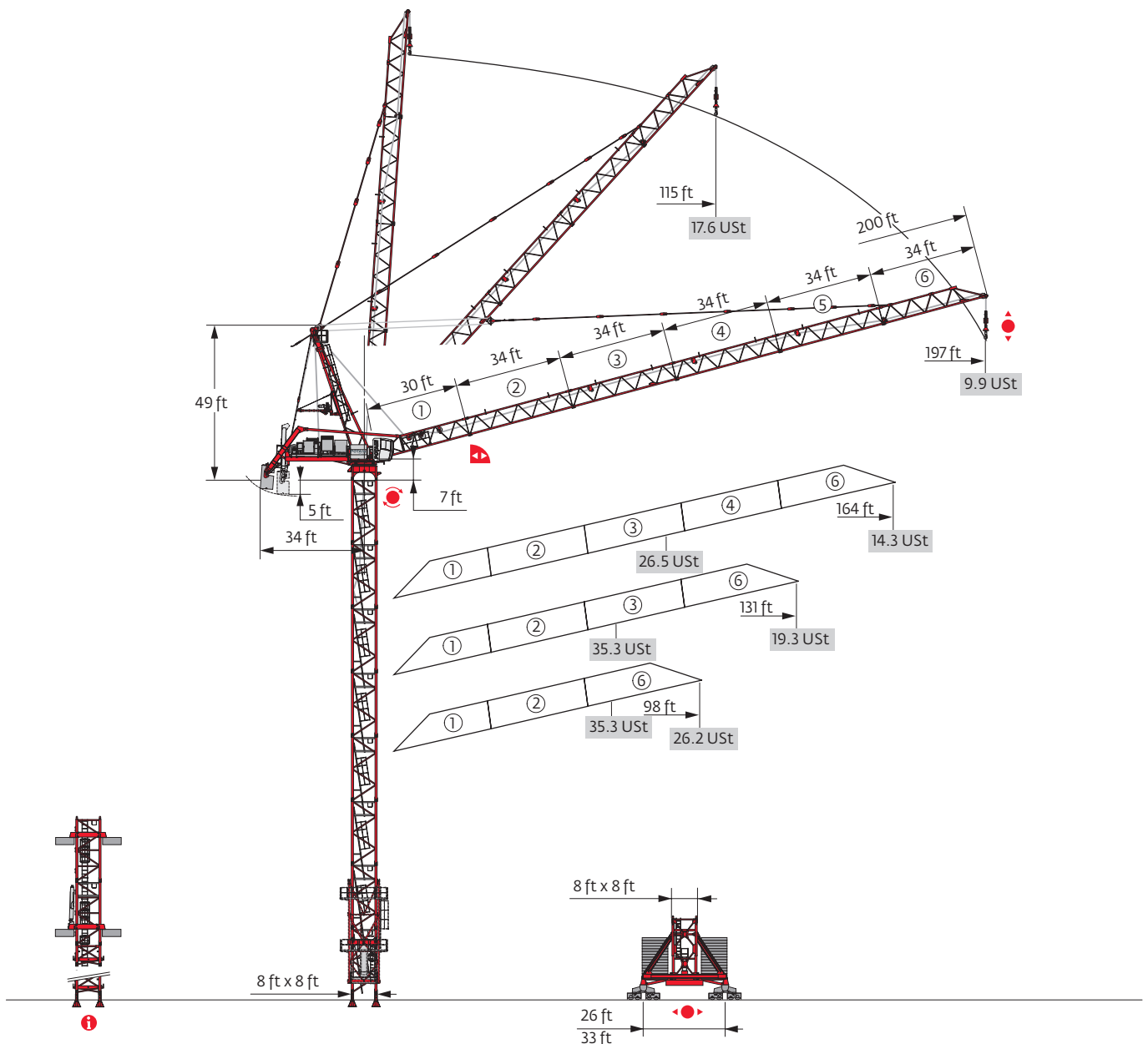


# Potain MR 605 B H32

## Data Sheet

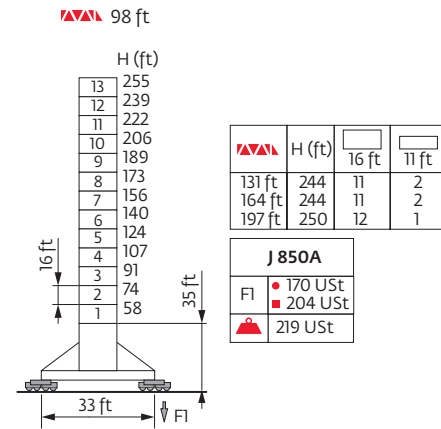
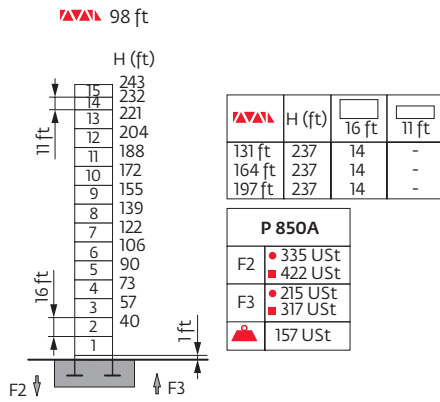
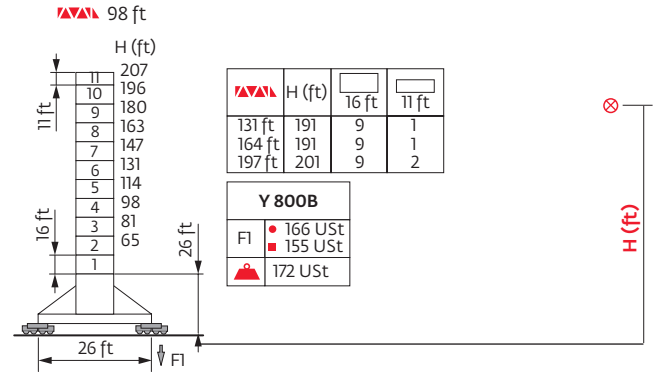
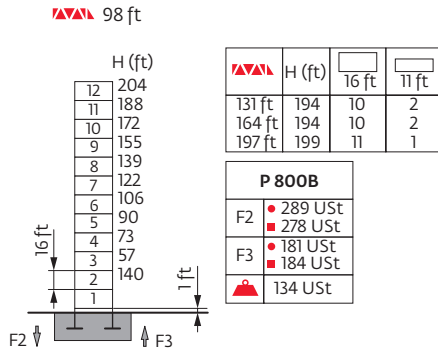
FEM 1.001-A3



Values have been rounded

# Mast

8 ft



●	Reactions in service
■	Reactions out of service
▲	Weight without load, without ballast, with jib and max. height



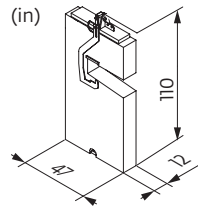
# Base ballast

8 ft				
Y 800B		J 850A		
▲▲▲	H (ft)	▲ (USt)	H (ft)	▲ (USt)
98 ft	207	105.8	255	79.4
131 ft	191	92.6	244	79.4
164 ft	191	79.4	244	92.6
197 ft	201	145.5	250	158.7

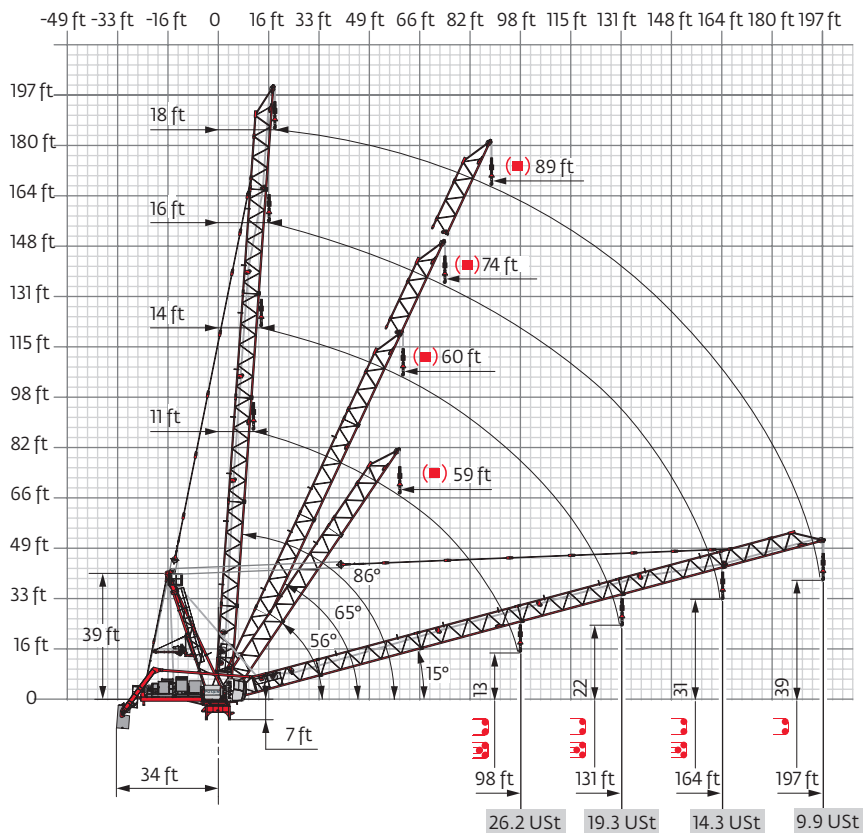
# Counter-jib ballast

▲▲▲	13,228 lb	▲ (lb)
98 ft	8	105,822
131 ft	9	119,050
164 ft	10	132,277
197 ft	10	132,277

13,228 lb



# Luffing jib



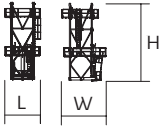

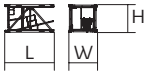
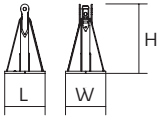
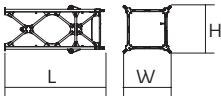
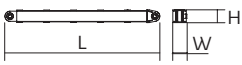
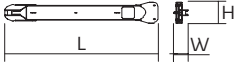
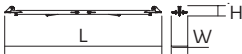
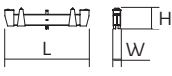
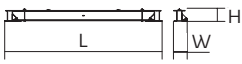
# Component weights

Crane upper :  197 ft -  180/215 LBR














			L (ft)	W (ft)	H (ft)	lb (+/- 5%)
Counter-jib			21.7	8.5	6.6	7385
Towerhead			8.8	6	45.9	19,621
Cab		Ultra View	14.7	6.5	8.2	3329
Pivot		8 ft	9	8.2	9.9	28,991
Jib section		①	31.5	6.2	5.9	5732
Jib section		② ③ ④ ⑤	34.7 34.7 34.7 34.7	6.2 6.2 6.2 6.2	6 6 6 6	4211 4299 3616 3086
Jib section		⑥	34.1	6.2	6	5291
Hookblock			4.7	1.7	8.9	3549
Hoisting winch (+ rope)		180/215 LBR	13.3	9.3	7	23,248
Luffing winch (+ rope)		90/108 VBR	9.4	7.5	6.2	8047


# Component weights












			L (ft)	W (ft)	H (ft)	lb (+/- 5%)
Climbing cage		□ 8 ft	15.2	19	33.6	28,484
K 850/KR 849A KRMT 849A KMT 850.10A KMT 850.9A		□ 8 ft	17.2 17.2 17.5 17.5	8.3 8.3 8.3 8.3	8.2 8.3 8.2 8.2	12,291 9017 12,015 10,582
KRMT 849C		□ 8 ft	11.7	8.4	8.3	7066
Fixing angles		P 800B P 850A	2.5 3	2.5 3	4.2 4.9	1025 1841
Chassis mast		Y 800B J 850A	19.8 29.4	9.6 9.6	9.6 9.6	19,004 31,416
Strut		Y 800B J 850A	18.1 28.1	1.6 1.7	1.5 1.3	2447 3638
1/2 Side member		J 850A J 850A Y 800B	24 24.3 18.6	2.3 2.3 4.1	3.3 3.7 2.4	5688 5798 3351
Side member		Y 800B	39.4	4.1	2.4	6724
Ballast support		Y 800B	12.3	1.2	3	2392
Chassis beam		J 850A Y 800B	35.1 28.5	2.9 2.7	2.8 2.4	7319 4938











# Mechanisms

400 V - 50 Hz											hp	kW	
	180 LBR 80	fpm	12/125	20/197	31/312	50/499	6/62	10/98	16/156	25/249	180	132	3576 ft
		USt	17.6	11.1	6.5	3.6	35.3	22.3	13	7.2			
	90 VBR	m/min	3 min 17 s								90	66	
	R - 13,2	rpm	0 → 0.67								3 x 6	3 x 4.4	
 	Y 800B RT 584 A1 - 2V	fpm	44 - 89								8 x 7	8 x 5.2	
 	J 850A												

 IEC 60204-32	
400 V (+10% -10%) 50 Hz	180 LBR : 270 kVA

480 V - 60 Hz											hp	kW	
	215 LBR 80	fpm	15/151	24/236	37/374	60/597	8/75	12/118	19/187	30/299	215	158	3576 ft
		USt	17.6	11.1	6.5	3.6	35.3	22.3	13	7.2			
	108 VBR	m/min	2 min 44 s								108	79	
	R - 15,8	rpm	0 → 0.8								3 x 7.2	3 x 5.3	
 	Y 800B RT 584 A1 - 2V	fpm	52 - 105								8 x 8.4	8 x 6.2	
 	J 850A												

 IEC 60204-32	
480 V (+6% -10%) 60 Hz	215 LBR : 325 kVA

	Hoisting
	Luffing
	Slewing
	Travelling
	Rated power
	Consult us

# Notes

Constant improvement and engineering progress make it necessary that we reserve the right to make specification, equipment and price changes without notice. Illustrations shown may include optional equipment and accessories, and may not include all standard equipment.



[www.manitowoc.com](http://www.manitowoc.com)

## **Manitowoc Cranes** **Regional Headquarters**

### **Americas**

Manitowoc, Wisconsin, USA  
Tel: +1 920 684 6621  
Fax: +1 920 683 6277

Shady Grove, Pennsylvania, USA  
Tel: +1 717 597 8121  
Fax: +1 717 597 4062

### **Europe, Middle East, Africa**

Ecully, France  
Tel: +33 472 18 2020  
Fax: +33 472 18 2000

### **China**

Shanghai, China  
Tel: +86 21 6457 0066  
Fax: +86 21 6457 4955

### **Greater Asia-Pacific**

Singapore  
Tel: +65 6264 1188  
Fax: +65 6862 4040

**Potain MR 605 B H32**  
Code 04-017-.5M-0911