



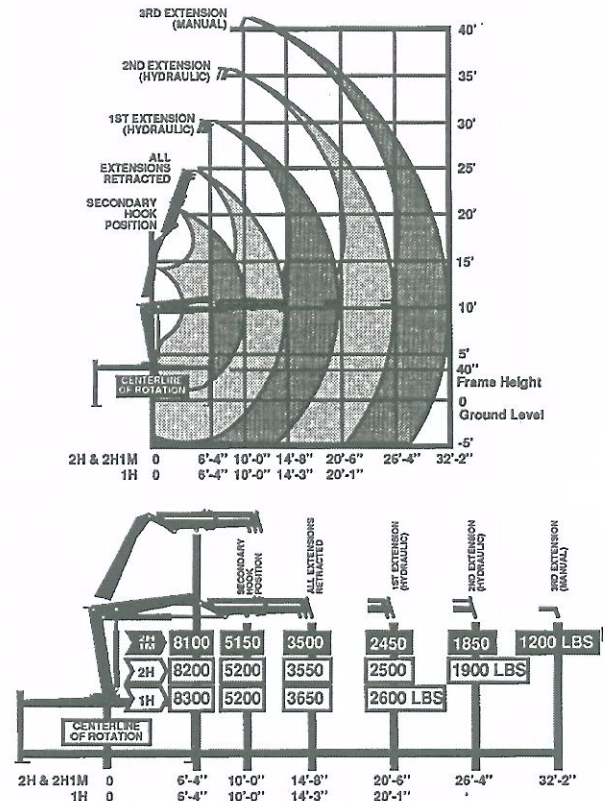
Specifications	1 Hydraulic	2 Hydraulic	2 Hydraulic 1 Manual
Crane Rating*	52,000 ft-lb (7.2 tm)	52,000 ft-lb (7.2 tm)	51,330 ft-lb (7.1 tm)
Horizontal Reach from centerline of rotation	20'1" (6.1 m)	26'4" (8.0 m)	32'2" (9.8 m)
Hydraulic Extension	70" (1.8 m)	70" x 2 (1.8 m x 2)	70" x 2 (1.8 m x 2)
Manual Extension	None	None	70"
Vertical Reach from mounting surface from ground/40" frame height	26'6" (8.1 m) 29'10" (9.1 m)	32'4" (9.8 m) 35'8" (10.9 m)	37'10" (11.5 m) 41'2" (12.5 m)
Crane Weight	2,820 lb (1279.2 kg)	3,060 lb (1388.0 kg)	3,140 lb (1424.3 kg)
Outrigger Span	12'4" (3.7 m)	12'4" (3.7 m)	12'4" (3.7 m)
Outrigger Pads	12" x 12" (30.5 cm x 30.5 cm)	12" x 12" (30.5 cm x 30.5 cm)	12" x 12" (30.5 cm x 30.5 cm)
Crane Storage Height from mounting surface from ground/40" frame height	7'0" (2.1 m) 10'4" (3.1 m)	7'0" (2.1 m) 10'4" (3.1 m)	7'0" (2.1 m) 10'4" (3.1 m)
Mounting Space Required**	28" (0.7 m)	28" (0.7 m)	28" (0.7 m)
Rotational Torque	7,800 ft-lb (1.1 tm)	7,800 ft-lb (1.1 tm)	7,800 ft-lb (1.1 tm)
Optimum Pump Capacity	9 U.S. gpm (34.1 L/min)	9 U.S. gpm (34.1 L/min)	9 U.S. gpm (34.1 L/min)
System Operating Pressure	2,500 psi (172.4 bar)	2,500 psi (172.4 bar)	2,500 psi (172.4 bar)
Oil Reservoir Capacity	17 U.S. gallons (64.4 L)	17 U.S. gallons (64.4 L)	17 U.S. gallons (64.4 L)
Hook Approach horizontal from centerline of rotation vertical from mounting surface	2'11" (0.9 m) 6'9" (2.1 m)	3'1" (0.9 m) 6'4" (1.9 m)	3'1" (0.9 m) 6'4" (1.9 m)

* Crane rating (ft-lb) is the rated load (lb) x the respective distance (ft) from centerline of rotation with all extensions retracted and the inner and outer booms in a horizontal position. This is the ANSI B30.22 standard.

** Allow an additional 5" between the cab and crane base for swing clearance.

Capacity Charts

2 Hydraulic/1Manual Extension



- Capacities (for above charts) through geometric range are limited to those shown in horizontal position.
- Loads shown are based on crane structural or hydraulic capability. Before lift is made, stability must be checked per SAE J765A.
- Working loads will be limited to those shown. Deduct the weight of load-handling devices.
- Winch-lifting capacity is limited to those shown. Maximum 4,000 lb for one-part line.