

# KOENIG CRANES K28S-2

## North America

*"Bringing Innovation to Construction"*



This versatile unit is setting the global standard in self erecting tower cranes. Some of the key features are:

- Jib 91' 10", clearance under hook 66' 3"
- Capacity at inner limit 6,615 lbs
- Capacity at outer limit is 2,315 lbs
- Power lift offers up to 20% more capacity when needed
- Can be luffed to 30°
- No concrete base is required
- Footprint is only 13' x 13'
- Galvanized structure
- Site or generator powered
- Radio remote control
- Full set up in less than one day
- Telescoping tower

Full details can be found at our website or by calling our toll free number. Dealer inquiries welcome.

### Koenig Cranes North America

2190 A-Carpenter Street  
P.O. Box 2304, Abbotsford  
BC Canada V2T 4X2

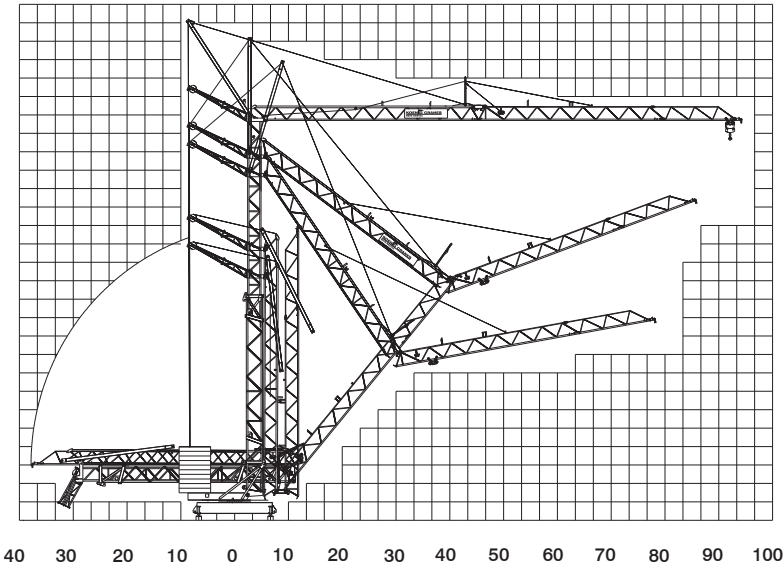
[www.koenigcranes.com](http://www.koenigcranes.com)

Tel 604-852-2192  
Fax 604-852-4421  
Email [info@koenigcranes.com](mailto:info@koenigcranes.com)

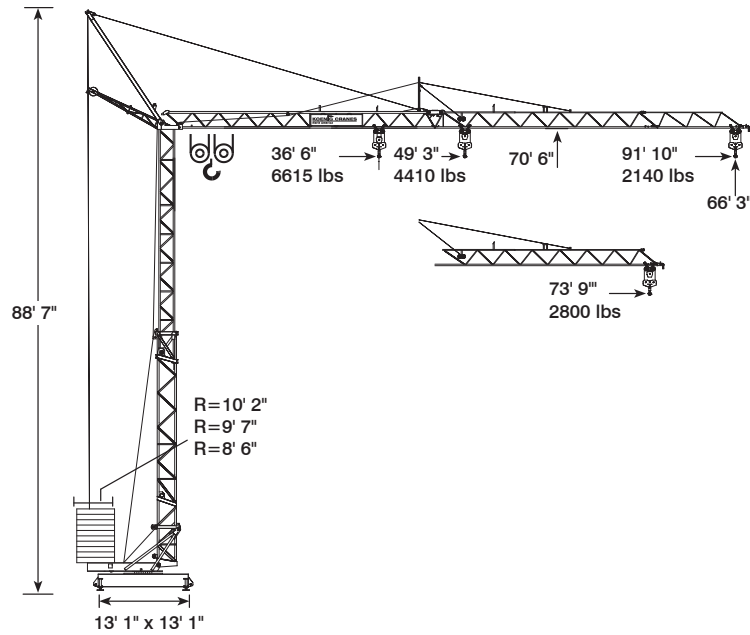
**Toll Free 1-877-852-2192**

# K28S-2 Technical Data

## Erection



## Rigging



## Radius and Capacity

Radius	max capacity		ft x lbs												
	ft	0°	Tons	ft	33	39	46	53	59	66	72	79	82	85	89
92	⊙	2.0	16.0	4410	4410	4410	4410	3946	3483	3108	2800	2668	2535	2425	2315
		2.0	17.0	4410	4410	4410	4410	4211	3704	3307	2975				
30°	⊙	Radius (ft)		29	35	40	46	52	57	63	69	72	75	77	80
		Hook Height (ft)		80	84	87	90	94	97	100	103	105	107	108	110

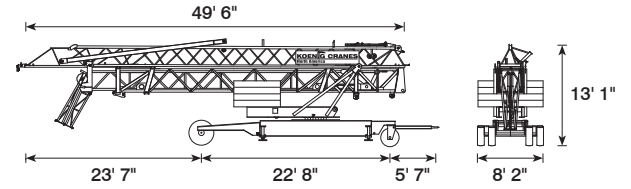
Radius	max capacity		ft x lbs												
	ft	0°	Tons	ft	33	39	46	53	59	66	72	79	82	85	89
92	⊙	2.0	15.0	4410	4410	4410	4365	3770	3329	2954	2668	2535	2425	2315	2205
		3.0	11.0	6614	6217	5137	4343	3748	3285	2910	2601	2469	2359	2249	2140
79	⊙	2.0	16.0	4410	4410	4410	4410	4056	3571	3175	2865				
		3.0	12.0	6614	6614	5467	4630	4012	3527	3131	2800				

All specifications subject to change

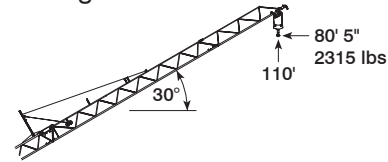
## Weight

<b>Central ballast weight</b>	7.5 Tons	<b>Transport weight approx.</b>	20.6 Tons	
<b>Counterweight</b>	R=10' 2"	8.5 Tons	<b>Dead weight approx.</b>	11.4 Tons
	R=9' 7"	9.9 Tons		
	R=8' 6"	11.2 Tons		

## Transportation by Road



## Luffing



## Reactions

	In service	Out of service
Reactions	15.5 Tons	13 Tons

## Speeds

	Step	ft/min.	lbs	kW
⊙	1	20 - 10	4410 - 6614	3.5
	2	78 - 39	4410 - 6614	9
	3	157 - 78	2425 - 4850	11
⊙	1	65		1.1
	2	131		1.5
⊙	0 - 1	U/min. sl./min. tr./min.		2.2

⚡ Operation voltage **460 V**      Frequency **60 Hz**      Power requirement **23.2 kVA (14.7 KW)**