

# MODEL 644B-42

## SPECIFICATIONS

### ENGINE:

- JOHN DEERE — 4039D  
80 HP @ 2500 RPM
- JOHN DEERE — 4039DT  
110 HP @ 2500 RPM
- CUMMINS — 4B3.9  
75 HP @ 2500 RPM
- CUMMINS — 4BT3.9  
102 HP @ 2500 RPM

### TRANSMISSION:

- 3-SPEED SEMI-AUTOMATIC, FWD. & REV.
- COLUMN-MOUNTED SHIFT LEVER
- NEUTRAL START SWITCH
- H.D. TRANSMISSION OIL COOLER
- DECLUTCH SWITCH ALLOWS BRAKE PEDAL TO DISENGAGE TRANSMISSION WHEN BRAKE IS APPLIED.

### AXLES:

- OUTBOARD PLANETARY WITH DOUBLE REDUCTION
- 4-WHEEL DRIVE
- TORQUE PROPORTIONING FRONT DIFFERENTIAL
- STEERING — 3 MODES: 4 WHEEL ROUND, 2 WHEEL, AND CRAB
- HYDRAULIC FULL POWER STEERING WITH 2 DOUBLE-ACTING STEER CYLINDERS PER AXLE

### BRAKES:

- 4-WHEEL, FULLY ENCLOSED, WET DISC
- HYDRAULIC ACCUMULATOR STORED ENERGY BRAKING FOR DEAD ENGINE STOPS
- "FAIL-SAFE" PARK BRAKE: SPRING APPLIED HYDRAULIC RELEASE
- DASH-MOUNTED INDICATOR LIGHTS

### ELECTRICAL SYSTEM:

- 12 VOLT, NEGATIVE GROUND
- 925 AMP COLD CRANKING, MAINTENANCE FREE BATTERY
- 65 AMP H.D. ALTERNATOR
- CIRCUIT BREAKER PROTECTED SYSTEM

### FILTRATION:

- AIR CLEANER — 2 STAGE DRY TYPE WITH REPLACEABLE ELEMENTS. (VISUAL SERVICE IND. STD.)
- ENGINE OIL LUBE — FULL FLOW SPIN-ON CARTRIDGE TYPE WITH BYPASS
- FUEL FILTER WITH WATER SEPARATOR & DRAIN.
- TRANSMISSION — SPIN-ON TYPE WITH SAFETY BYPASS
- MAIN HYDRAULICS — 10 MICRON FULL FLOW FILTER ELEMENT WITH SAFETY BYPASS

### HYDRAULIC SYSTEM:

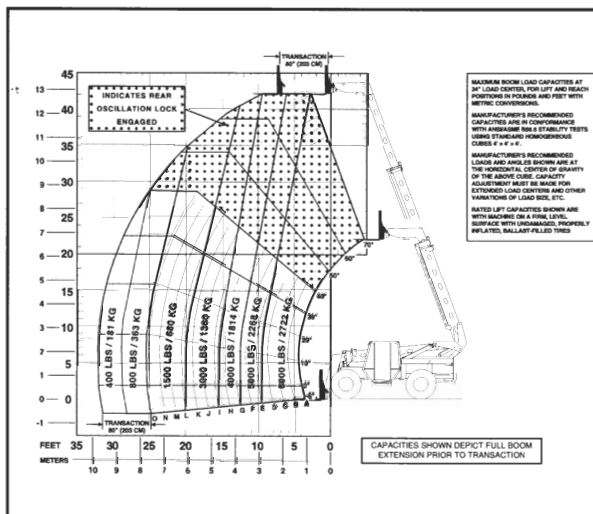
- 2-SECTION GEAR PUMP: 18 GPM TO MAIN HYDRAULICS, 18 GPM TO STEERING, BRAKE PRIORITIES AND HYDRAULIC SYSTEM. EXTRA FINE METERING & SELF CENTERING HYDRAULIC CONTROL VALVES.

### STANDARD EQUIPMENT:

- SEAT BELT
- HORN
- REVERSE WARNING ALARM
- NEUTRAL START SWITCH
- SKID RESISTANT FLOOR MATERIAL
- RIGHT SIDE REAR VIEW MIRROR
- ANTI-FREEZE PROTECTION TO - 30°F
- MACHINE LEVEL INDICATOR

### SALES & SERVICE

**Web Equipment Inc.**  
**Larry Welch**  
 350 White Ave.  
 Marietta, GA 30062  
 (770)425-0007 Fax (770)425-2269



### STANDARD EQUIPMENT (cont'd):

- FULL INSTRUMENTATION INCLUDING: FUEL GAUGE, WATER TEMP. GAUGE, HOUR METER, OIL PRESSURE GAUGE, TRANS. OIL TEMP. GAUGE, VOLT METER, PARK BRAKE APPLIED LIGHT, LOW BRAKE PRESSURE LIGHT, TRANS. DECLUTCH LIGHT
- AUTOMATIC FORK LEVELING
- HYD/HYD. JOYSTICK CONTROLS (PILOT OPERATED)
- 3-SECTION FULLY SYNCHRONIZED SLIDE BOOM
- FIRST AUXILIARY HYDRAULICS TO BOOM TIP
- FRAME LEVELING 12-1/2° L & R
- TIE DOWN LUGS
- 13:00 X 24 - 10 PLY TIRES
- QUICK ATTACH
- REAR AXLE STABILIZER SYSTEM
- OPERATOR'S COMPARTMENT ROPS/FOPS
- CONFORMS WITH ANSI/ASME B56.6, 1992

### OPTIONAL EQUIPMENT:

- 50.5" FORK CARRIAGE
- 50.5" SIDE TILTING CARRIAGE (10° R-L)
- DUAL FORK POSITIONING CARRIAGES AVAILABLE IN WIDTHS 50.5" OR 74"
- 74" STANDARD FRAMERS CARRIAGE
- 74" SIDE TILTING FRAMERS CARRIAGE (10° R-L)
- 2" X 4" - 42"/48"/60" FORKS
- 1-3/4" X 6" - 48"/60" LUMBER FORKS
- 2" X 2" CUBING FORKS - ORDER IN PAIRS
- AUXILIARY HYDRAULICS FOR SECOND ACCESSORY
- 1.25 CU YD BUCKET (LIGHT MATERIAL)
- 4,500 LB CAPACITY HYDRAULIC WINCH, BOOM MOUNTED
- CAB ENCLOSURE
- HEATER/DEFROSTER
- AIR CONDITIONING
- 10' TRUSS BOOM (W/WO 2,000 LB CAP. HYDRAULIC OPERATED WINCH)
- ROADWAY LIGHT PACKAGE
- WORK LIGHT PACKAGES
- 3/4 CU YD HYDRAULIC OPERATED CONCRETE HOPPER
- STABILIZERS

### OPERATING SPECIFICATIONS:

LIFT AND CARRY CAPACITY .....	6,000 LBS
MAX. LIFT HEIGHT .....	42'
MAX. "LANDING HEIGHT" .....	42'
TRANSACTION .....	80"
MAX. HORIZONTAL FORWARD REACH .....	32'
MAX. REACH @ MAX. LIFT .....	9'8"
CAPACITY @ MAX. REACH .....	400 LBS
BELOW GRADE .....	23"
OUTSIDE TURNING RADIUS .....	13' 8"
GROUND CLEARANCE .....	16"
OVERALL HEIGHT .....	95"
OVERALL WIDTH .....	8'
OVERALL LENGTH .....	23'7" (W/42" Forks)
WHEELBASE .....	124"
WEIGHT .....	22,700 LBS

### CAPACITIES:

FUEL .....	40 GAL.
COOLING SYSTEM .....	18 QTS.
CRANK CASE W/ FILTER .....	14 QTS
HYDRAULIC RESERVOIR .....	44 GAL.
BATTERY .....	12 VOLT 925 CCA

**LULL® INDUSTRIES, INC.**

3045 Hwy. 13, St. Paul, MN 55121. Tel 612-454-4300  
 ©Copyright 1994 LULL INDUSTRIES, INC. All Rights Reserved