

# HAMMERHEAD TOWER CRANE

**Specifications:**

- ▶ Max jib length: 246.1 ft
- ▶ Capacity at max length: 7,055 lbs
- ▶ Max capacity: 44,092 lbs

**WORKS FOR YOU.™**

# KEY

## Zeichenerklärung · Légende · Leyenda · Legenda



Hoisting · Heben · Levage · Elevación · Sollevamento



Trolleying · Katzfahren · Distribution · Distribución · Traslazione carrello



Slewing · Schwenken · Orientation · Orientació · Rotazione



Travelling · Schienenfahren · Translation · Traslación · Traslazione



Directive on noise level · Richtlinie für den Schall-Leistungspegel · Directive sur le niveau acoustique · Directiva sobre el nivel acustico · Direttiva sul livello acustico



Consult us · Auf Anfrage · Nous consulter · Consultarnos · Consultateci



Power requirements · Geforderte Stromstärke · Puissance totale nécessaire · Potencia necesaria · Potenza totale richiesta



Power supply · Stromversorgung · Alimentation · Alimentación · Alimentazione



In service · In Betrieb · En service · En servicio · In servizio



Out of service · Außer Betrieb · Hors service · Fuera de servicio · Fuori servizio



Max. under hook height · Höchste Hakenhöhe · Hauteur maxi. sous crochet · Maxima altura bajo gancho · Altezza max. sotto gancho



Without load, without ballast, max. jib and max. height · Ohne Last und Ballast, mit Maximalausleger und Maximalhöhe · A vide, sans lest, avec flèche et hauteur maximum · Sin carga, sin lastre, con pluma y altura máxima · A vuoto, senza zavorra, braccio max., altezza max.



Counterweight · Gegengewicht · Lest de contre-flèche · Lastre de contra flecha · Zavorra controbraccio

**C25**

FEM 1004 Out of service wind condition · FEM 1004 Windverhältnisse im Außerbetriebszustand · FEM 1004 Conditions de vent hors service · FEM 1004 Condiciones de viento fuera de servicio · FEM 1004 Condizioni del vento in fuori servizio

# CONTENTS

**SK 415-20**

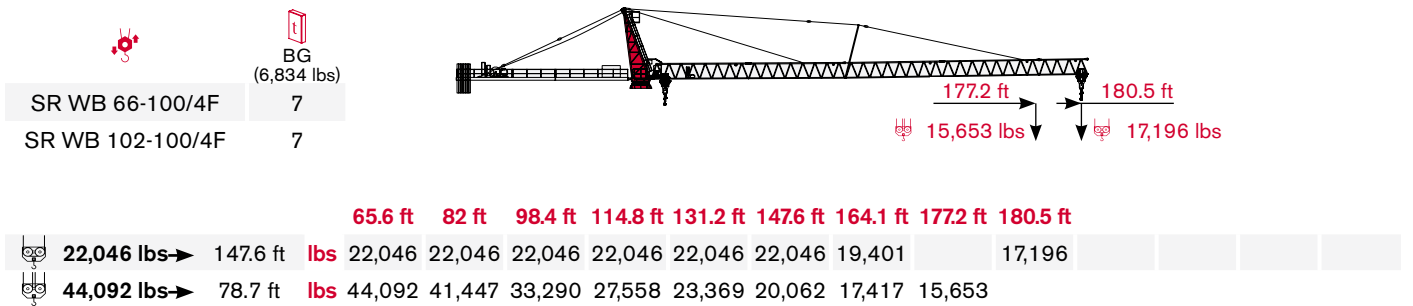
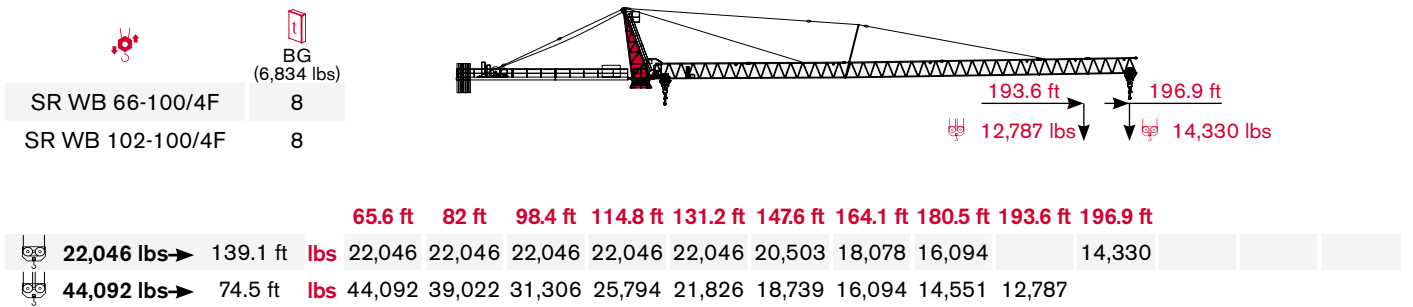
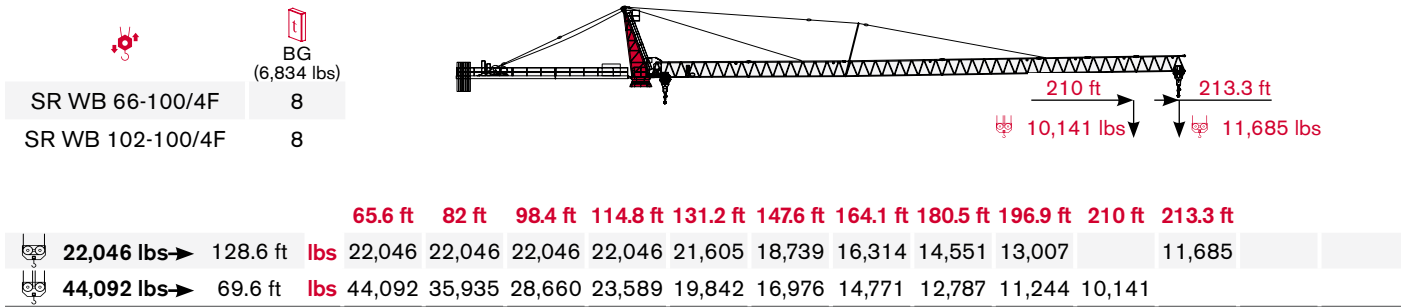
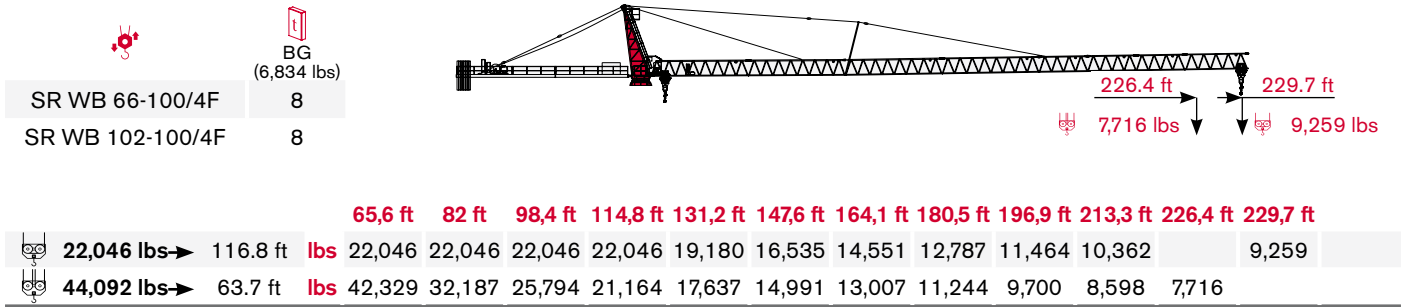
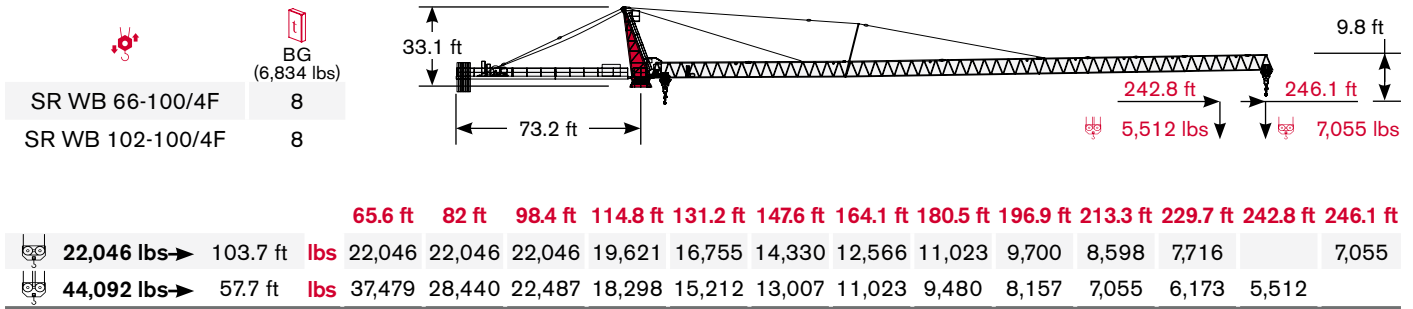
**Inhalt · Contenu · Contenido · Indice**



Page · Seite · Page · Pàgina · Pagina:

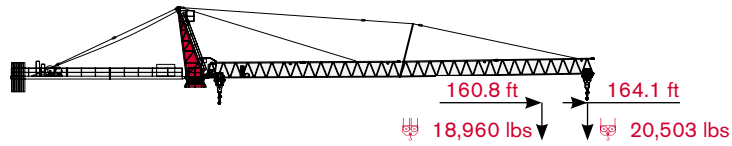
<b>Load Diagram · Lastkurven · Courbes de charges · Curvas de cargas · Diagramma di portata</b> .....	<b>4</b>
<b>Tower · Turm · Tour · Torre · Torre</b> .....	<b>6</b>
<b>Other configurations · Aufstellmöglichkeiten · Autres Implantations</b>	
<b>Otras Implantaciones · Altre Installazioni</b> .....	<b>7</b>
<b>Mechanisms · Antriebe · Mécanismes · Mecanismos · Meccanismi</b> .....	<b>8</b>
<b>Transportation · Transport · Transportation · Transportation · Trasporto</b> .....	<b>10</b>



# LOAD DIAGRAM



## Lastkurven · Courbes de charges · Curvas de cargas · Diagramma di portata

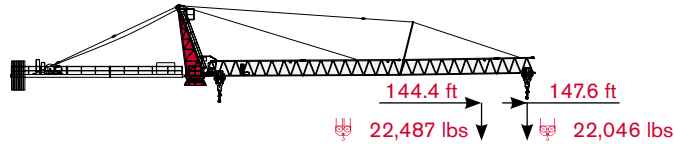


	
	BG (6,834 lbs)
SR WB 66-100/4F	7
SR WB 102-100/4F	7





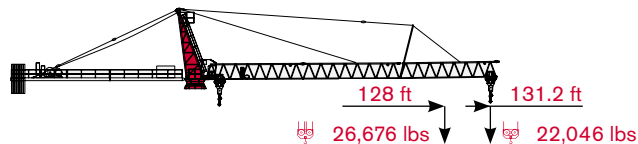
			<b>65.6 ft</b>	<b>82 ft</b>	<b>98.4 ft</b>	<b>114.8 ft</b>	<b>131.2 ft</b>	<b>147.6 ft</b>	<b>160.8 ft</b>	<b>164.1 ft</b>									
	<b>22,046 lbs</b> →	155.2 ft	<b>lbs</b>	22,046	22,046	22,046	22,046	22,046	22,046	20,503									
	<b>44,092 lbs</b> →	82.4 ft	<b>lbs</b>	44,092	44,092	35,274	29,101	24,692	21,164	18,960									

	
	BG (6,834 lbs)
SR WB 66-100/4F	7
SR WB 102-100/4F	7





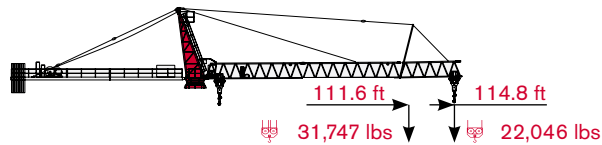
			<b>65.6 ft</b>	<b>82 ft</b>	<b>98.4 ft</b>	<b>114.8 ft</b>	<b>131.2 ft</b>	<b>144.4 ft</b>	<b>147.6 ft</b>										
	<b>22,046 lbs</b> →	147.6 ft	<b>lbs</b>	22,046	22,046	22,046	22,046	22,046	22,046										
	<b>44,092 lbs</b> →	84 ft	<b>lbs</b>	44,092	44,092	36,156	29,983	25,353	22,487										

	
	BG (6,834 lbs)
SR WB 66-100/4F	6
SR WB 102-100/4F	6



			<b>65.6 ft</b>	<b>82 ft</b>	<b>98.4 ft</b>	<b>114.8 ft</b>	<b>128 ft</b>	<b>131.2 ft</b>											
	<b>22,046 lbs</b> →	131.2 ft	<b>lbs</b>	22,046	22,046	22,046	22,046	22,046											
	<b>44,092 lbs</b> →	85.3 ft	<b>lbs</b>	44,092	44,092	36,597	30,424	26,676											

	
	BG (6,834 lbs)
SR WB 66-100/4F	6
SR WB 102-100/4F	6




			<b>65.6 ft</b>	<b>82 ft</b>	<b>98.4 ft</b>	<b>111.6 ft</b>	<b>114.8 ft</b>												
	<b>22,046 lbs</b> →	114.8 ft	<b>lbs</b>	22,046	22,046	22,046	22,046												
	<b>44,092 lbs</b> →	85.6 ft	<b>lbs</b>	44,092	44,092	36,817	31,747												

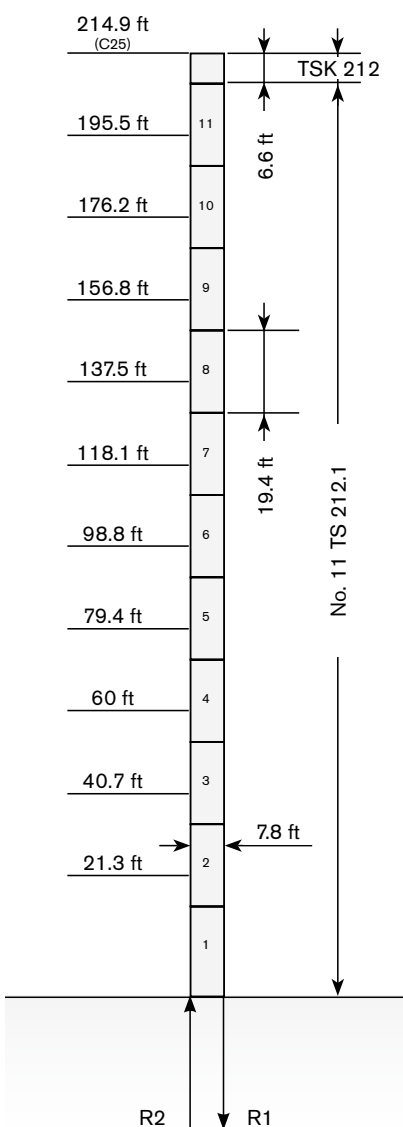
# TOWER

Turn · Tour · Torre · Torre


Standard Configurations · Standardkonfiguration · Standard Implantations · Implantaciones Standard · Installazioni Standard

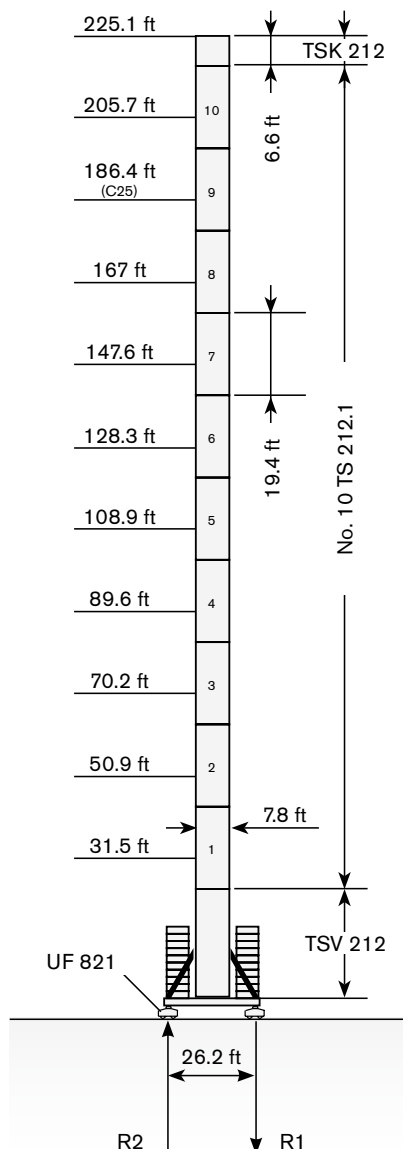
Basement: A

	●	◊
R1	-2655 kN	-2755 kN
R2	1992 kN	2186 kN
	890 kN	




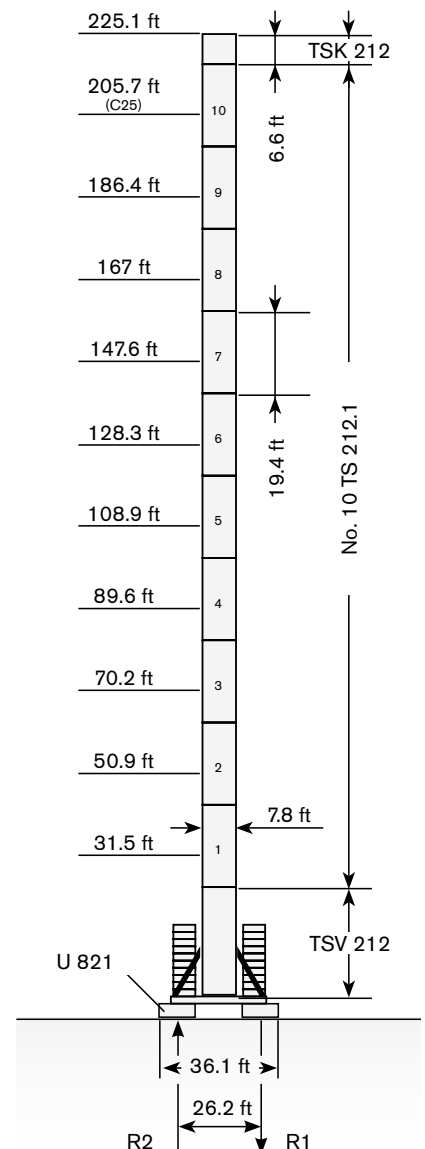
Basement: E

	●	◊
R1	-1121 kN	-1099 kN
R2	0 kN	-51 kN
	978 kN	



Basement: F

	●	◊
R1	1099 kN	-1113 kN
R2	0 kN	-18 kN
	978 kN	

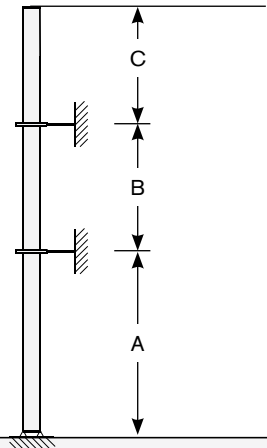
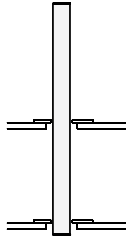


Max. under hook height · Höchste Hakenhöhe · Hauteur maxi. sous crochet · Maxima altura bajo gancho · Altezza max. sotto gancio

## Other configurations · Aufstellmöglichkeiten · Autres Implantations · Otras Implantaciones · Altre Installazioni

Bottom climbing crane · Kletterkran im Gebäude · Télescopage sur dalles · Telescopage grúa trepadora · Gru climbing

Crane tied to the structure · Geankerter Kran · Grue ancrée · Grúa anclada · Gru ancorata



Consult us · Auf Anfrage · Nous consulter · Consultarnos · Consultateci

	min	max
A	68.5 ft	168.3 ft
B	48.4 ft	117.8 ft
C	165.5 ft	

# MECHANISMS







Antriebe · Mécanismes · Mecanismos · Meccanismi

Power supply · Stromversorgung ·

Alimentation · Suministro eléctrico · Alimentazione

			
	SR WB 66-100/4F	200 kVA	480V - 60Hz / 3 ph
	SR WB 102-100/4F	245 kVA	480V - 60Hz / 3 ph

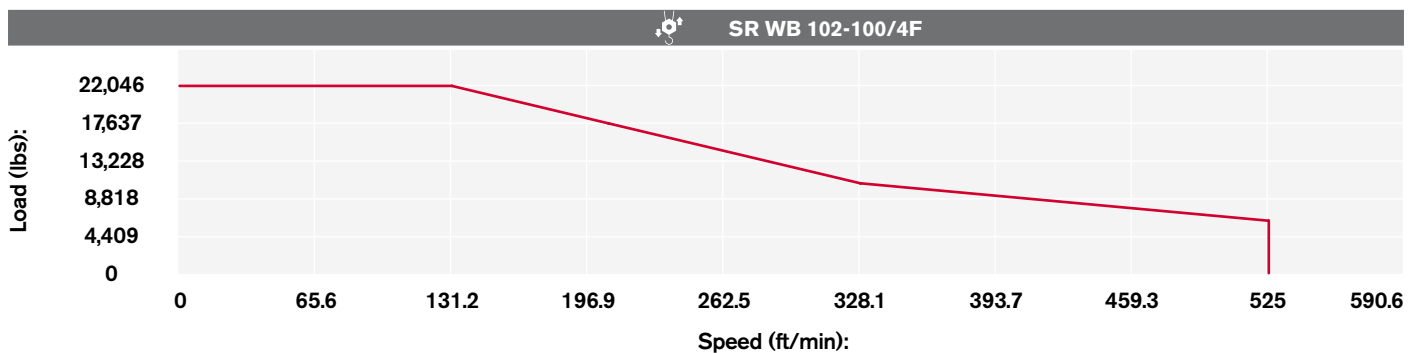
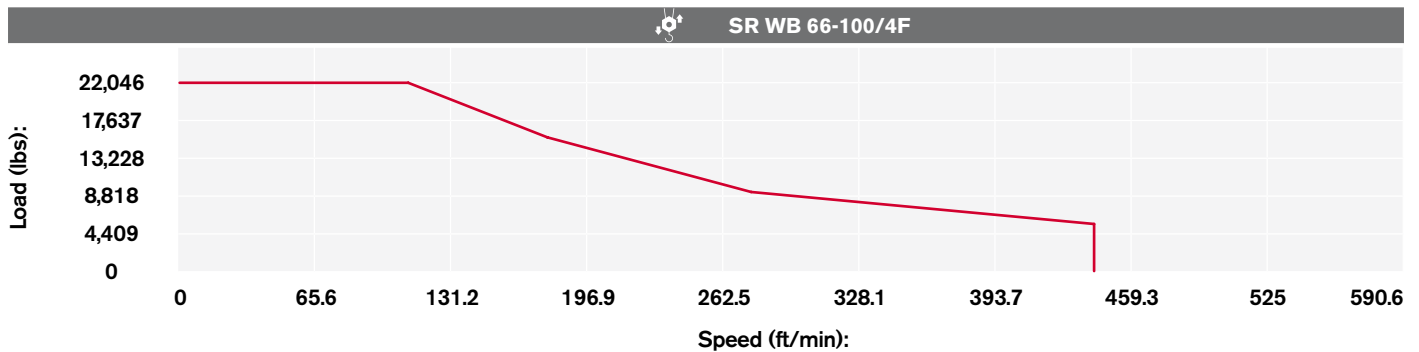
Hoisting · Heben · Levage · Elevación · Sollevamento

			lbs	ft/min	kW	
	SR WB 66-100/4F		5,512	0 → 440	66	1.443.6 ft*
			9,259	0 → 275		
			15,653	0 → 177		
			22,046	0 → 110		
			11,023	0 → 220		
			18,519	0 → 138		
			31,306	0 → 89		
			44,092	0 → 55		
	SR WB 102-100/4F		6,173	0 → 525	102	
			10,582	0 → 328.1		
			17,637	0 → 206.7		
			22,046	0 → 131.2		
			12,346	0 → 262.5		
			21,164	0 → 196.9		
35,274			0 → 101.7			
44,092			0 → 65.6			




\* > 1,443.6 ft ⓘ



## Hoisting Speed - Heben Geschwindigkeit - Vitesse de Levage - Velocidad de Elevación - Velocità' di Sollevamento



## Additional Specifications - Weitere Leistungsdaten - Spécifications additionnelles - Otras prestaciones - Altre movimentazioni

	FU 9-200/4	0 → 252.6 ft/min	1 x 14.2 HP
	K WB 120/4	0 → 0.9 rpm	2 x 11 HP (114.8 ft - 180.5 ft) 3 x 11 HP (196.9 ft - 246.1 ft)
	SR 10-190/4	0 → 100 ft/min	4 x 11.9 HP

# TRANSPORTATION

Transport · Transport · Conducción · Trasporto


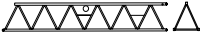
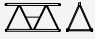
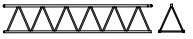


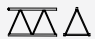
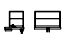




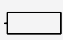
## Packing list

SK 415-20	DESCRIPTION · BESCHREIBUNG · DESCRIPTION · DESCRIPCIÓN · DESCRIZIONE	LENGTH · LÄNGE · LONGUEUR · LONGITUD · LUNGHEZZA	WIDTH · BREITE · LARGEUR · ANCHURA · LARGHEZZA	HEIGHT · HÖHE · HAUTEUR · ALTURA · ALTEZZA	WEIGHT · GEWICHT · POIDS · PESO · PESO
	U821 Base Cross for TS212 & 212.1 Tower	34.6 ft	9.1 ft	2.8 ft	17,108 lbs
	TSV 212.1 Tower Section for U821 cross	31.2 ft	9.8 ft	10 ft	20,503 lbs
	213.1 Tower Section	19.5 ft	8 ft	8 ft	9,950 lbs
	TSV 213.1 /212.1 Transition Section	19.5 ft	8 ft	8 ft	9,750 lbs
	212.1 Tower Section	19.5 ft	8 ft	8 ft	9,304 lbs
	TSK 212 Tower Section	8 ft	9.8 ft	6.7 ft	6,173 lbs
	Turntable Complete w/cabin and 3 swing motors	17.2 ft	14.2 ft	12.3 ft	27,602 lbs
	Towertop w / catwalk and ladder	27.1 ft	6.6 ft	6.6 ft	9,612 lbs
	WB 66 Machinery Deck w/o wire rope	9.2 ft	8.4 ft	5.6 ft	7,120 lbs
	WB 102 Machinery Deck w/o wire rope	9.3 ft	8.8 ft	5.7 ft	9,100 lbs
	WB 66 Counterjib complete less wire rope	69.9 ft	9.2 ft	6.6 ft	26,500 lbs
	WB 102 Counterjib complete less wire rope	69.9 ft	9.2 ft	6.6 ft	28,480 lbs
	Jib Section No. 1 w / Trolley machinery	38.9 ft	6.6 ft	7.2 ft	6,636 lbs
	Jib Section No. 2	40.5 ft	6.6 ft	7.2 ft	5,181 lbs

# TRANSPORTATION

**SK 415-20**

**Transport · Transport · Conducción · Trasporto**

SK 415-20	DESCRIPTION · BESCHREIBUNG · DESCRIPTION · DESCRIPCIÓN · DESCRIZIONE	LENGTH · LÄNGE · LONGUEUR · LONGITUD · LUNGHEZZA	WIDTH · BREITE · LARGEUR · ANCHURA · LARGHEZZA	HEIGHT · HÖHE · HAUTEUR · ALTURA · ALTEZZA	WEIGHT · GEWICHT · POIDS · PESO · PESO
	Outer Jib Support "A" Frame	21.6 ft	5.4 ft	4.7 ft	661 lbs
	Jib Section No. 3	38.8 ft	6.6 ft	7.6 ft	4,762 lbs
	Jib Section No. 4	18.7 ft	6.6 ft	6.3 ft	2,006 lbs
	Jib Section No. 5	35 ft	6.6 ft	6.9 ft	4,012 lbs
	Jib Section No. 6	35.4 ft	6.6 ft	6.3 ft	2,998 lbs
	Jib Section No. 7	33.5 ft	6.6 ft	6.3 ft	2,161 lbs
	Jib Section No. 8	17.1 ft	6.6 ft	6.2 ft	1,764 lbs
	Jib Tip Section	4.5 ft	6.7 ft	4.5 ft	860 lbs
	Single (outer) Trolley for 2-Part Line	7.3 ft	5.7 ft	6 ft	1,764 lbs
	Single Load Block for 2-Part Line	2.8 ft	1 ft	4.5 ft	1,190 lbs
	Double Trolley for 4-Part Line	14.7 ft	5.7 ft	6 ft	3,417 lbs
	Dual Load Block for 4-Part Line	5.5 ft	1 ft	4.5 ft	2,403 lbs
	BG Counterweight	14.7 ft	0.5 ft	5.1 ft	6,812 lbs

[www.terexcranes.com](http://www.terexcranes.com)

Effective Date: June 2010.

Product specifications and prices are subject to change without notice or obligation. The photographs and/or drawings in this document are for illustrative purposes only. Refer to the appropriate Operator's Manual for instructions on the proper use of this equipment. Failure to follow the appropriate Operator's Manual when using our equipment or to otherwise act irresponsibly may result in serious injury or death. The only warranty applicable to our equipment is the standard written warranty applicable to the particular product and sale and Terex makes no other warranty, express or implied. Products and services listed may be trademarks, service marks or trade-names of Terex Corporation and/or its subsidiaries in the USA and other countries. All rights are reserved. Terex® is a registered trademark of Terex Corporation in the USA and many other countries.

Gültig ab: Juni 2010.

Produktbeschreibungen und Preise können jederzeit und ohne Verpflichtung zur Ankündigung geändert werden. Die in diesem Dokument enthaltenen Fotos und/oder Zeichnungen dienen rein anschaulichen Zwecken. Anweisungen zur ordnungsgemäßen Verwendung dieser Ausrüstung entnehmen Sie bitte dem zugehörigen Betriebshandbuch. Nichtbefolgung des Betriebshandbuchs bei der Verwendung unserer Produkte oder anderweitig fahrlässiges Verhalten kann zu schwerwiegenden Verletzungen oder Tod führen. Für dieses Produkt wird ausschließlich die entsprechende, schriftlich niedergelegte Standardgarantie gewährt. Terex leistet keinerlei darüber hinaus gehende Garantie, weder ausdrücklich noch stillschweigend. Die Bezeichnungen der aufgeführten Produkte und Leistungen sind gegebenenfalls Marken, Servicemarken oder Handelsnamen der Terex Corporation und/oder ihrer Tochtergesellschaften in den USA und anderen Ländern. Alle Rechte vorbehalten. „TEREX“ ist eine eingetragene Marke der Terex Corporation in den USA und vielen anderen Ländern.

Date d'effet : Juin 2010.

Les spécifications et prix des produits sont sujets à modification sans avis ou obligation. Les photographies et/ou dessins contenus dans ce document sont uniquement pour illustration. Veuillez vous référer à la notice d'utilisation appropriée pour les instructions quant à l'utilisation correcte de cet équipement. Tout manquement au suivi de la notice d'utilisation appropriée lors de l'utilisation de notre équipement ou tout acte autrement irresponsable peut résulter en blessure corporelle sérieuse ou mortelle. La seule garantie applicable à notre équipement est la garantie standard écrite applicable à un produit et à une vente spécifique. Terex n'offre aucune autre garantie, expresse ou implicite. Les produits et services proposés peuvent être des marques de fabrique, des marques de service ou des appellations commerciales de Terex Corporation et/ou ses filiales aux Etats Unis et dans les autres pays, et tous les droits sont réservés. «TEREX» est une marque déposée de Terex Corporation aux Etats Unis et dans de nombreux autres pays.

Fecha efectiva: Junio 2010.

Los precios y las especificaciones de productos pueden sufrir cambios sin aviso previo u obligación. Las fotografías o dibujos de este documento tienen un fin meramente ilustrativo. Consulte el manual de instrucciones del operador correspondiente para más información sobre el uso correcto de este equipo. El hecho de no respetar el manual del operador correspondiente al utilizar el equipo o actuar de forma irresponsable puede suponer lesiones graves o fatales. La única garantía aplicable a nuestro equipo es la garantía escrita estándar correspondiente a cada producto y venta, y TEREX no amplía dicha garantía de forma expresa o implícita. Los productos y servicios mencionados pueden ser marcas registradas, marcas de servicio o nombres de marca de TEREX Corporation o de sus filiales en Estados Unidos de América y otros países, y se reservan todos los derechos. „TEREX“ es una marca comercial registrada de Terex Corporation en Estados Unidos de América y muchos otros países.

Data di inizio validità: Giugno 2010.

Ci riserviamo il diritto di modificare le specifiche e i prezzi dei prodotti in ogni momento e senza preavviso. Le fotografie e/o i disegni contenuti in questo documento sono destinati unicamente a scopi illustrativi. Consultare le istruzioni sull'uso corretto di questo macchinario, contenute nell'opportuno Manuale dell'operatore. L'inottemperanza delle istruzioni contenute nel Manuale dell'operatore del macchinario e altri comportamenti irresponsabili possono provocare gravi lesioni, anche mortali. L'unica garanzia applicabile ai nostri macchinari è la garanzia scritta standard applicabile al particolare prodotto e alla particolare vendita; Terex è esonerata dal fornire qualsiasi altra garanzia, esplicita o implicita. I prodotti e servizi elencati possono essere dei marchi di fabbrica, marchi di servizio o nomi commerciali di TEREX Corporation e/o società affiliate negli Stati Uniti d'America e altre nazioni e tutti i diritti sono riservati. „TEREX“ è un marchio registrato di Terex Corporation negli USA e molti altri Paesi.

Copyright 2010 Terex Corporation

Terex Cranes, Global Marketing, Dinglerstraße 24, 66482 Zweibrücken, Germany  
Tel. +49 (0) 6332 830, Email: [info.cranes@terex.com](mailto:info.cranes@terex.com), [www.terexcranes.com](http://www.terexcranes.com)

Brochure Reference: TC-DS-IMP-E/F/G/I/S-SK415-20-06/10



**WORKS FOR YOU.™**