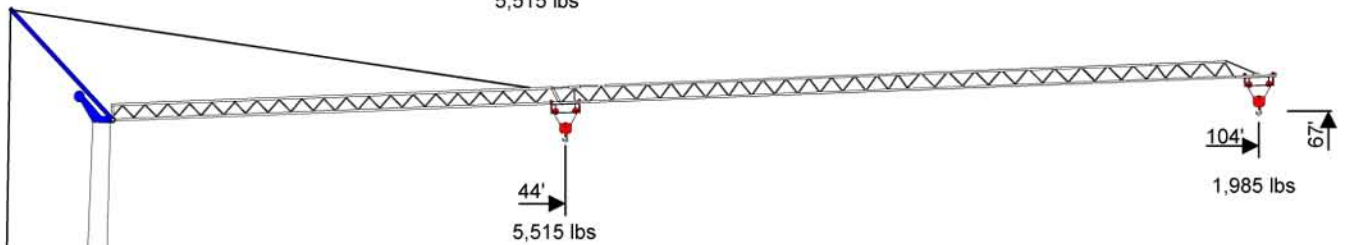
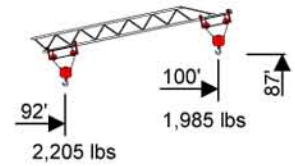
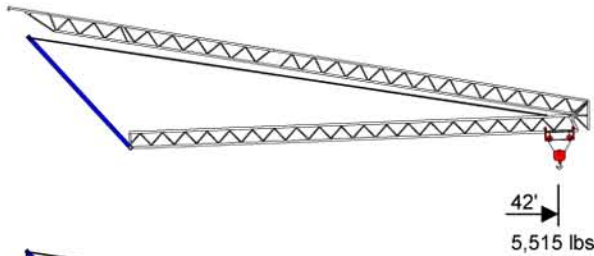


Benazzato Self-Erecting Crane 294-S

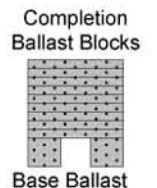
67' - 104' - 1,985 lbs



Power Requirements
Single Phase OR Three Phase
240V or 480V

Component Weights

Base Ballast 7,280 lbs X 2 = 14,560 lbs
 C Ballast Blocks 3,090 lbs X 9 = 27,810 lbs
 Total Ballast: = 42,370 lbs
 Crane Weight: = 24,810 lbs
 Total Erected Weight: = 67,180 lbs
 Job Site Axles = 1,875 lbs



7 ft. 3.00 in.

12 ft. 6.00 in.

Hook	Ft.	44	45	49	52	59	66	72	79	85	92	98	104
Radius	Meters	13.4	13.8	15	16	18	20	22	24	26	28	29.8	31.6
104'	Lbs	5,513	5,292	4,829	4,476	3,881	3,440	3,065	2,756	2,514	2,293	2,139	1,985
31.6m	KG	2,500	2,400	2,190	2,030	1,760	1,560	1,390	1,250	1,140	1,040	0,970	0,900