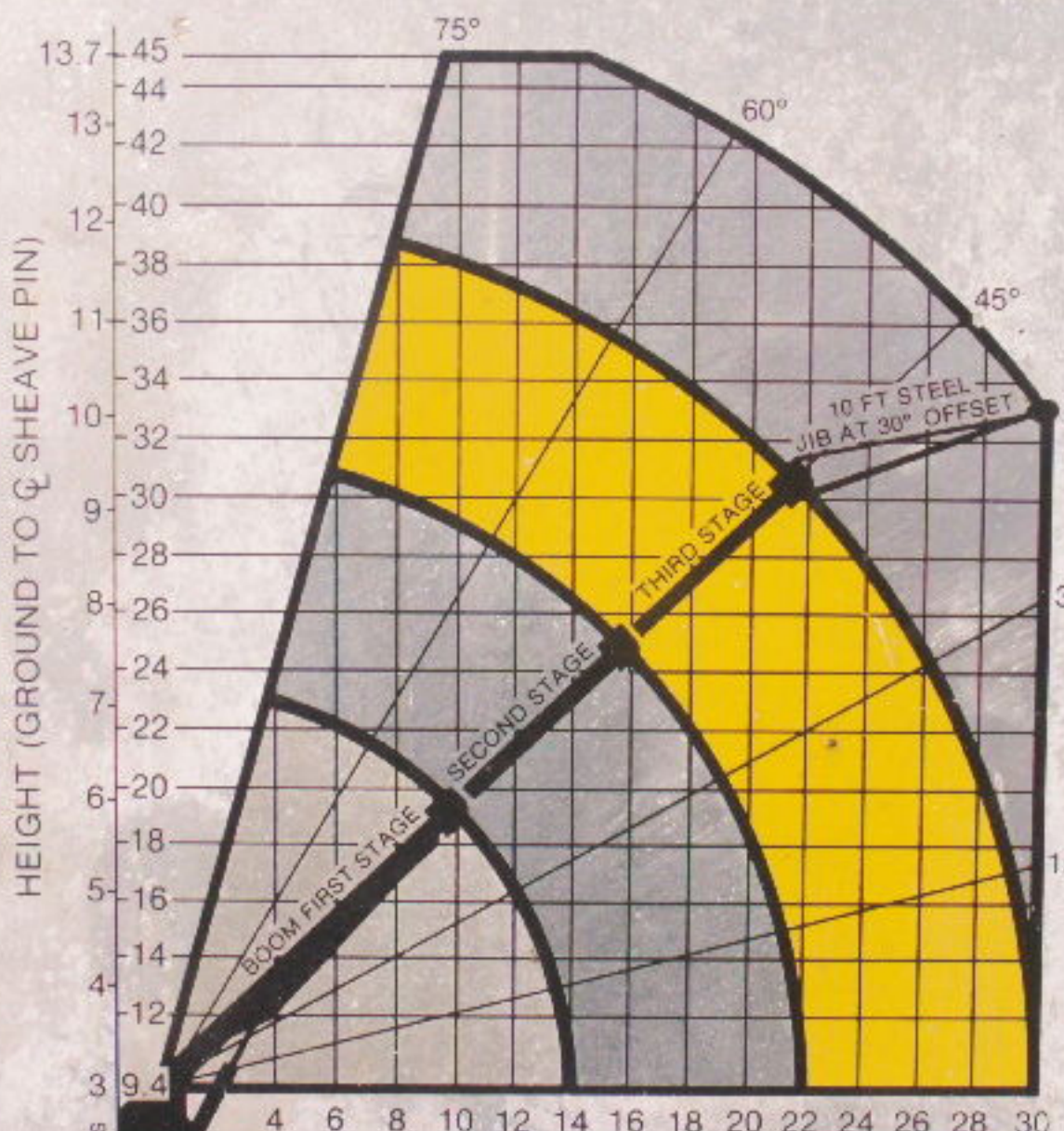


LOAD RADIUS		MAXIMUM LOAD							
FT	(m)	FIRST STAGE BOOM		SECOND STAGE BOOM		THIRD STAGE BOOM		10 FT STEEL JIB AT 30° OFFSET	
		LB	(kg)	LB	(kg)	LB	(kg)	LB	(kg)
4	(1.2)	*10000	*(4530)	*7000	*(3180)				
5	(1.5)	*9000	*(4080)	*7000	*(3180)				
6	(1.8)	*7500	*(3400)	*6700	*(3040)	5100	(2310)		
8	(2.4)	6000	(2720)	5100	(2310)	4800	(2180)		
10	(3.0)	5000	(2270)	4200	(1900)	3600	(1630)		
12	(3.7)	4300	(1960)	3600	(1630)	3100	(1410)		
14	(4.3)	3300	(1500)	3100	(1410)	2800	(1270)	*1500	*(680)
16	(4.9)			2800	(1270)	2500	(1130)	*1500	*(680)
18	(5.5)			2600	(1180)	2400	(1090)	*1500	*(680)
20	(6.1)			2200	(1000)	2000	(910)	*1500	*(680)
22	(6.7)			1700	(770)	1650	(750)	*1500	*(680)
24	(7.3)					1600	(730)	*1400	*(630)
26	(7.9)					1500	(680)	*1200	*(540)
28	(8.5)					1300	(590)	*1000	*(450)
30	(9.1)					1100	(500)	*900	*(410)

Beyond Allowable Load Radius

MAXIMUM ALLOWABLE LOAD FOR SINGLE LINE IS 5000 LBS (2270 kg) USE PART BEARING FOR HEAVIER LOADS



MAXIMUM LOADS HYDRAULIC OR ... ARE BASED ON THE MACHINE WHEN:

1. THE MACHINE IS ...
2. ALL OUTRIGGER SURFACE ...
3. MACHINE IS PRO ... COUNTERWEIGH ...
4. TIRES ARE PROP ...

PRACTICAL WORK SURFACE, OUT OF CLAMSHELL OR CO OPERATOR EXPER DEDUCT FROM MA WEIGHTS OF LOAD THE MAXIMUM LO LOADS TO OBTAIN BOOM ANGLE IND LIGHT LOADS, LOADS WHICH MAY

YOU ME LOA UP 04 EVE